

The perfect blend of skill,  
talent and collaboration.



At KeyBank, we're proud to support the the Weathervane Playhouse in it's display of skill and talent. And we're proud to pool our skills to bring you financial services that support your talents.



1.800.KEY2YOU®

Key.com

**Achieve anything.**

Key.com is a service mark of KeyCorp.

# WEATHERVANE

COMMUNITY PLAYHOUSE

*Kick up your heels!*

Youth/Family Production No. 69

2004-2005

70<sup>th</sup>



## Winnie -the- Pooh

*Dramatized by Kristin Sergel  
from the stories of A.A. Milne*

**July 17 - August 1, 2004**



# Give yourself a hand!

For supporting the arts in Northeast Ohio

If not for you,  
these performers would be playing  
to an empty house.

The arts serve many millions of people every year, contribute well over a billion dollars to the economy, and employ hundreds of thousands of creative and technical workers. Approximately a thousand people are employed in the arts in Akron alone!

Consider the benefits of involvement in the arts: Those involved in music training or music appreciation score higher in verbal and math tests, and training in music contributes to self-satisfaction and success in later life. Theater, music, dance, and visual arts programs can act to connect diverse segments of a community by providing education and encouraging dialogue, thus promoting understanding. People exposed to the arts throughout their lives read more, perform more community service, and vote more often than those who do not participate in the arts.

Thank you for supporting the arts. Thank you for helping to make your community a better place to live.



**Audio-Technica U.S., Inc., Stow, Ohio**

Audio and video products for home and professional use.

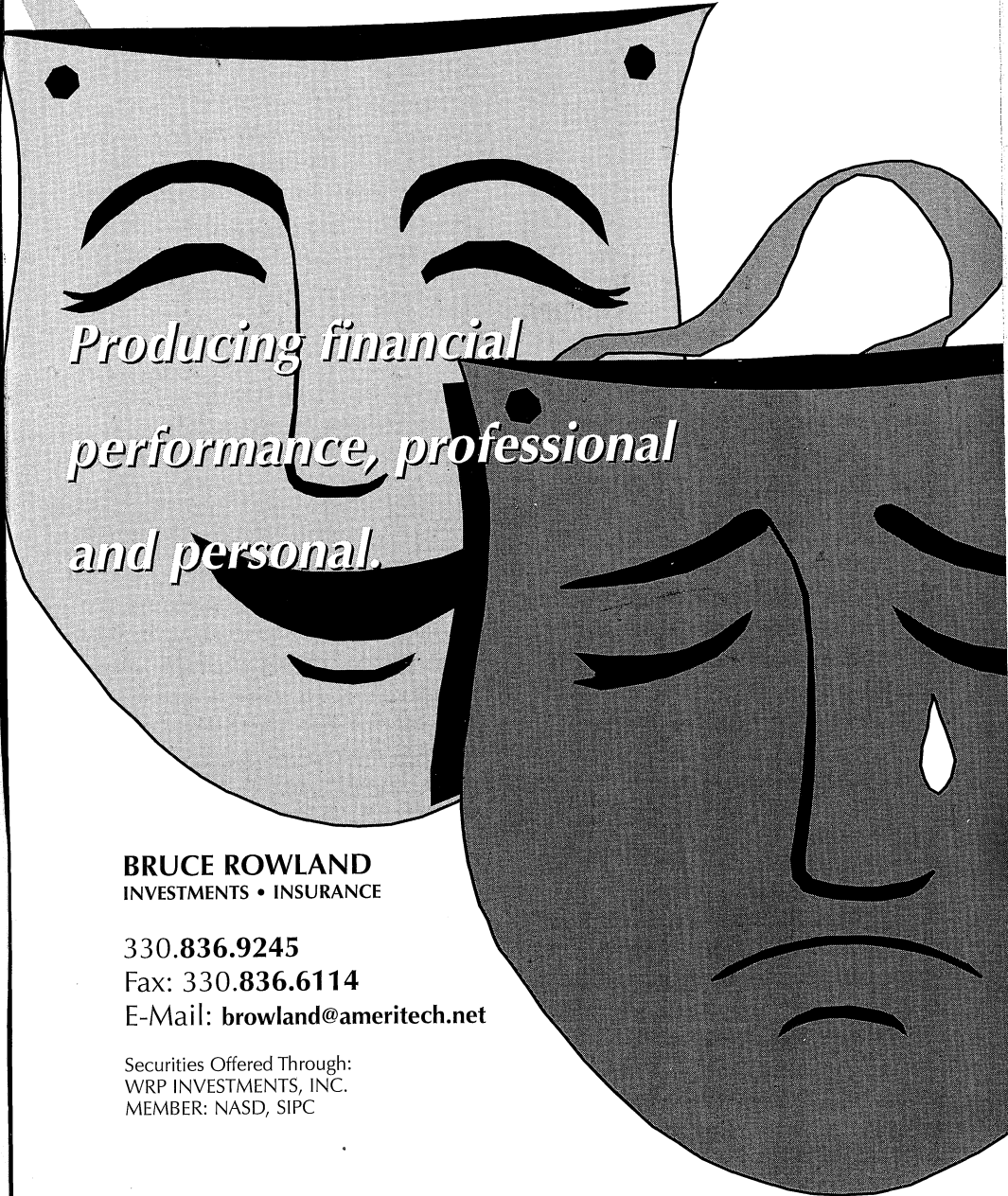
[www.audio-technica.com](http://www.audio-technica.com)

Copyright ©2003 Audio-Technica U.S., Inc. and its licensors. All rights reserved.



## THE HAGEN ROWLAND GROUP

FINANCIAL CONSULTANTS



*Producing financial  
performance, professional  
and personal.*

The background of the right page features two large, stylized theatrical masks. The mask on the left is light gray with a smiling expression, while the mask on the right is dark gray with a sad, crying expression. The text is overlaid on the smiling mask.

**BRUCE ROWLAND**  
INVESTMENTS • INSURANCE

**330.836.9245**

**Fax: 330.836.6114**

**E-Mail: [browland@ameritech.net](mailto:browland@ameritech.net)**

Securities Offered Through:  
WRP INVESTMENTS, INC.  
MEMBER: NASD, SIPC





*Weathervane Community Playhouse*

1301 Weathervane Lane, Akron, OH 44313-5186

330-836-2626 ♦ Fax 300-873-2150 ♦ wcpakron@aol.com ♦ www.weathervaneplayhouse.com

**Charlie and the Chocolate Factory**

by Richard R. George, Novel by Roald Dahl

July 26 - Aug. 10, 2003 (\*YT)

**My Way**

A Musical Tribute to Frank Sinatra

Compiled by David Grapes and Todd Olson

September 10 - October 5, 2003

**Proof**

by David Auburn

October 15 - November 2, 2003

**Joseph**

and the Amazing Technicolor Dreamcoat

by Tim Rice and Andrew Lloyd Webber

Nov. 22 - Dec. 21, 2003 (\*YT)

**The Mystery of Irma Vep**

by Charles Ludlam

January 14 - February 1, 2004

**The Crucible**

by Arthur Miller

February 14 - 28, 2004 (\*YT)

**A Lesson Before Dying**

by Romulus Linney, Novel by Ernest Gaines

March 10 - 28, 2004

**The Dinner Party**

by Neil Simon

April 14 - May 9, 2004

**Pinocchio**

Performed by the Piper Puppets

presented by WCP Women's Board

May 8, 2004 (\*YT)

**Nunsense**

by Dan Goggin

June 9 - July 3, 2004

\*Youth/Family Production

*Patron Information*

\* **Emergency Exits** located at the left front of the auditorium and left side of the lobby. Front door and lobby doors will also be used.

\* **Restrooms** Located in lobby alcove - wheelchair accessible.

\* **Handicapped Services** Seating for a limited number of wheelchairs. Please notify in advance if needed.

\* **Assistive Listening Devices** Available thanks to the generosity of Virginia and J. Robert Wilson.

\* **Patrons:** Expecting a call? Leave name and seat number with the House Manager. Please turn off your cell phones, pagers and audible watches.

\* **Beverages and Food** may not be taken into the auditorium during performances.

\* **Use of Cameras and Recording Devices** is prohibited during performances.

\* **Curtain time** Wed./Thurs. - 7:30 p.m., Fri./Sat. - 8 p.m. and Sun. - 2:30 p.m.

\* **Latecomers** will be seated at the rear of the auditorium during a suitable break in the play if space is available and may take their reserved seats after intermission.

\* **Exiting the Theater** Please remain seated until the auditorium lights are on. Parking lot illumination assures that getting to your car will be easy and secure.

\* **Smoking** is permitted outside the building.

\* **Lost and Found** items will be held at the Ticket Office until claimed.

\* **Comments** from audience members are always welcomed with interest. Please feel free to write to Weathervane to express your views and opinions about our productions.

Send your comments to: *Executive Director, Weathervane Community Playhouse.*



Weathervane appreciates the continuing strong support of individuals, corporations, foundations and other donors who help finance the theater's operations, capital improvements and endowment program. Weathervane is classified as a 501(c)(3) organization and contributions are tax deductible. Following are some of the many ways in which you can take pride in your support of the art of theater in our community.

\* **Become a Weathervane Member**

Your annual support makes you a voting member of Weathervane Community Playhouse. You'll receive discounts on educational programs and other benefits, based on the membership level you choose. Members are invited to Weathervane's annual meeting and to other special events. Memberships are renewable annually, beginning at \$75 (Contributing), and continuing at Sustaining, Patron, Silver, Gold, Platinum and Diamond Levels. Membership is actively solicited in the fall but is accepted at any time. Members are recognized in the Playbill.

\* **Give a Special Gift To Say You Care**

Special donations may be made at any time to memorialize a friend or relative whose interest in Weathervane was significant to his or her life. You may also recognize and celebrate important dates or current achievements of relatives, friends or associates.

\* **Remember Weathervane in Your Will**

What better way to carry on your tradition of support to Weathervane than by a planned gift. By taking advantage of the tax laws which encourage charitable giving, the U.S. Government will share in the cost of your gift to Weathervane. Your gift can fulfill a specific purpose or project while providing your estate with tax savings. To help ensure that Weathervane will continue, please contact our Executive Director for more information.

\* **Check For Matching Gifts** Many national and local corporations will

match your donations to Weathervane, increasing your generosity to the theater. Please check whether or not your company participates in such a program.

\* **Designate Gifts To Local Foundations**

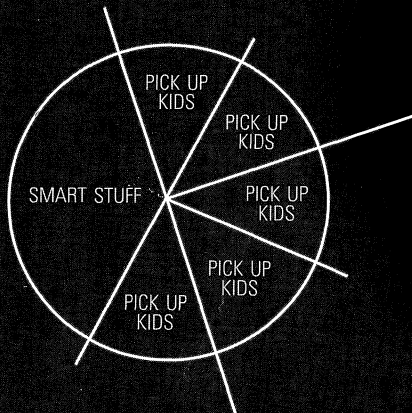
Several of this area's larger foundations accept memorial and tribute gifts in the name of specific organizations such as Weathervane Community Playhouse. Such gifts help assure continuing grants to the theater's operations and special projects. We are enormously grateful for the impressive history of foundation support in this community.

\* **Sponsor or Underwrite a Production**

Our productions may be underwritten by local corporations or foundations. Benefits can include private "command performances" and special receptions for employees and friends when your business chooses this important method of support. Please call 330-836-2626. We'd like to discuss this kind of opportunity with you.

\* **Capital Project**

The construction segment of the Capital Project included a scene shop with basement storage, a 2nd-floor classroom and rehearsal hall, soundproof production booth, elevator and fly gallery pocket above the stage and installation of the rigging system for the fly gallery. Donations for Stage Two of the project continue to purchase classroom furnishings, update the lighting system, renovate the lobby and replenish the Capital Fund for maintenance and repairs.



NPR. Classical.  
Other smart stuff.  
89.7 WKSU

*A Service of Kent State University*

Akron-Canton's  
only  
television  
newscast  
is here!

Watch Your  
Newscast  
Weeknights  
at 6:30

Proud sponsor of  
Weathervane  
Community Playhouse

**PAX23**  
**news**  
UGA2  
VX53



ERIC MANSFIELD  
anchors Akron-Canton news



MARK NOLAN  
forecasts Akron-Canton weather



JIM DONOVAN  
covers Akron-Canton sports





## History From the Barn to the Valley



From 1935 until 1951, Weathervane was housed in a modest carriage house barn on Marshall Avenue. Some recall its cramped quar-

ters but especially the energy and devotion of four ladies, Grace Hower Crawford, Laurine Schwan, Helen Troesch and Muriel MacLachlan, who believed that Akron deserved the best in theater and that volunteers could make it happen. A lobby plaque lists the names of other founders who shared their commitment. The rooftop weathervane gave the theater its name and logotype character, the Chanticleer.

In 1951, the organization renovated a building on Copley Road and, from 1960 - 1992, Bob Belfance served as director. Along with custodian/ticket office manag-

er, Nora Scott, the two-person staff relied on volunteer support. Paid guest directors and children's theater instructors served in part-time positions. Ticket receipts and donations helped meet expenses and created a modest endowment. A fund-raising drive resulted in construction of the present 263-seat facility which opened in 1970. Thanks to Grace Crawford's legacy, the mortgage has been paid off.

Construction made possible by the most recent Capital Campaign added classrooms, rehearsal space, scene shop, additional prop storage, elevator, library, fly gallery and fly system, a sound-proof production booth and a costume workshop.

Weathervane celebrated its 500th Mainstage production, *The Laramie Project*, during the 2002-2003 season. Thanks for being a part of our history.



## Theater Education

### Youth Education

Weathervane offers professionally taught classes in acting, stagecraft, musical theatre and improvisation for children up to age 18. Fall and spring classes are held on Saturdays and two-week **Hands on Theater (H.O.T.)** workshops are planned throughout the summer. The cost is minimal with a limited number of scholarships available and discounted fees for Weathervane members.

Children may also audition for roles in many productions. Casting is not dependent upon class enrollment. Participation is an extension of valuable training in every facet of production from the audition process to technical and performance experience. Family members may also have learning opportunities by participating in such productions.

Weathervane works with area schools by providing outreach information and study guides as part of our **Project STAGE** program, which brings public and private school students to see as many as five productions each season. This season, *Proof*, *The Crucible* and *A Lesson*

*Before Dying* will be featured in the **Project STAGE** events. Tickets are only \$8.


For information about classes or audition schedules for Youth Productions, please call our Education Coordinator at 330-836-2323.

### Adult Classes

Professionally taught Adult Theatre classes include Classical Drama, Improvisation, Scenic Design, Stage Lighting and Directing. These classes help actors expand their performance and public speaking skills.

### Learning On the Job

Every production participant becomes part of Weathervane's continuing education process. You'll learn from more experienced volunteers who share the creation of production and performance. If you don't have time for structured classes, sign on to become a crew member or performer. We'll help you expand your knowledge of backstage and onstage responsibilities.



**WESTERN RESERVE ACADEMY**





Open House  
Saturday,  
Nov. 8, 2003 &  
April 24, 2004

Visit classes, tour the campus and meet faculty and students. Families and prospective students of all ages welcome.

Check in between  
8:45 a.m. and 11:00 a.m.  
John D. Ong Library  
College Street Entrance

## Reserve: A Great Place to Be

... an exceptional place to learn

For further information: Visit Reserve at [www.wra.net](http://www.wra.net) or call 330.650.9717

**WESTERN RESERVE ACADEMY**  
Hudson, Ohio 44236 • Day and Boarding 9-12

Featured in U.S. News & World Report



**Old Trail School**

## The Pathway to Quality Education

Preschool through Grade Eight

2315 Ira Road in Bath, Ohio near Hale Farm 330-666-1118 Visit our Web site at [www.oldtrail.org](http://www.oldtrail.org)







## Generations of Giving.

*The McDowell family's generosity and vision has transcended generations, establishing a permanent and living legacy for The University of Akron.*

*From left to right:  
Peggy McDowell Lloyd, C. Blake McDowell, III,  
Beatrice McDowell (with her cat, Tammy),  
Philip A. Lloyd, '72*

You can create an enduring legacy through a bequest to The University of Akron.

A gift through your Will or Trust helps students and provides lasting recognition for your family for generations.

To structure a charitable bequest that ensures the greatest tax results for your estate and celebrates your support of The University of Akron, please call:

David P. Horn  
Director of Planned Giving  
The University of Akron  
330-972-6870  
or e-mail: [dhorn@uakron.edu](mailto:dhorn@uakron.edu)

**The University of Akron**

THE POWER OF



FIRSTENERGY RECOGNIZES THE POWER OF THE ARTS AND ITS ABILITY TO ENHANCE THE QUALITY OF LIFE FOR EVERYONE IN OUR COMMUNITY.

WE'RE PROUD TO HELP SUPPORT PERFORMANCES THAT ENRICH US ALL.

**FirstEnergy**

2635

**Ohio Arts Council**

## Building Ohio Through the Arts

Supporting organizations with state tax dollars to encourage economic growth, educational excellence and cultural enrichment.



Share the Arts

Ohio Arts Council  
727 East Main Street  
Columbus OH  
43205-1796  
614/466-2613  
[www.oac.state.oh.us](http://www.oac.state.oh.us)

Visit today.

**Arts in Ohio.com**

Find what, when and where arts and cultural events are happening in Ohio... instantly! Just search the Event Finder by whatever criteria are most important to you.





## Ticket Information

**\* Tickets** Purchase in person or charge by phone with Visa, MasterCard or Discover at 330-836-2626, Tuesdays through Fridays 10 a.m. to 5:30 p.m. and on performance Saturdays from 11:30 a.m. to 5:30 p.m. *Reservations are also required when using coupons from your Weathervane Super Coupon Book, complimentary tickets or coupons offered from any other cooperating arts organization.* Please arrive 20 minutes before curtain time to pick up your tickets. Unclaimed tickets will be released for sale five minutes prior to curtain at the discretion of the Box Office Manager and volunteers.

**\* Special seating** Please inform us if you have seating preferences due to visual, auditory or other physical needs. Please remember orders are filled on a first-come, first-served basis with season subscribers and advanced group sales taking first priority.

**\* Season Subscriber Exchanges** must be phoned in at least 24 hours prior to

your originally scheduled performance. We can't always guarantee the same seats but we'll give you the closest available replacements. An upgrade fee applies when changing from a Preview Night. *If you cannot use your subscription seats, please call us at least 24 hours in advance to release them. We will recognize this as a donation.*

**\* Student Rush Tickets** go on sale 30 minutes before curtain time. Students with a valid ID may purchase any remaining tickets for half price. Rush tickets cannot be reserved in advance.

**\* Discounted Group Reservations** are available for groups of 15 or more. Call Weathervane at 330-836-2626 to learn how you can entertain friends, associates, or clients with a night at the theater or to plan a fund-raising event for larger groups.

**\* Gift Certificates** are available at any time in any amount you choose.

**\* Recycle your playbills** Anyone who doesn't wish to keep the playbill may drop it in our recycling box.

Money-saving super coupon books are available all season.



### Super Coupon Books *Help You Save!*

*Where Theater Comes Alive!*

Booklets contain eight coupons and serve as pre-paid admissions for main-stage series productions. Use them one-at-a-time or all at once!

## WEST SIDE VOCAL ACADEMY

*Professional Teachers — Professional Results*  
*Voice — Acting*

Ron Hazelett  
*Bass*

330-864-0660

Susan Wallin  
*Soprano*

*Charting new paths towards the future of the Arts.*

# Look smart. Be smart.



Turning heads through smart design

**MINX** DESIGN

330.762.4126 • 1.888.GET.MINX



*The tradition continues...  
distinctive retirement living*

*The Merriman*



*The Merriman, our inaugural season, 2003 — 2004*

For 52 years our home has provided a place for area seniors to receive loving care. With our commitment to preserving this tradition comes our ongoing promise to residents, families, staff, and the community that The Merriman will provide exceptional care and distinctive retirement living.

Now accepting reservations for gracious accommodations:

- Nursing Care
- Memory Care
- Gourmet Dining
- Restorative Care
- Assisted Living
- Senior Day Activities
- Wellness Programs
- Physical Therapy

For a personal tour of our distinctive residence, contact Barb Mullin at (330) 762-9341.

*The Merriman*, 209 Merriman Road, Akron Ohio 44303

**Supporting inspirational performances  
delivered by exceptional people.**

[www.brunercox.com](http://www.brunercox.com)



At Bruner-Cox LLP, we believe the expertise, integrity and continuity of our people allow us to deliver innovative accounting and consulting solutions to every client relationship.

Experience the value of our people.

**BRUNER-COX LLP**

Business Consultants & Certified Public Accountants

**Our people. Your solutions.**



**SEXY**

High fashion furs at a price  
that will turn you on.



104 Summit Mall  
Mon/Thu 10am-8pm • Tues/Wed/Fri 10am-6pm  
Sat 10pm-5pm • Sun Closed • 330-867-2771





## Women's Board

The Women's Board was formed in 1938 to "offer voluntary service and financial assistance to the Playhouse." Women's Board has energized youth education programs, sponsored productions, spearheaded fund raisers and paid for many of the amenities we appreciate in the Green Room/kitchen. Members of this active group are invaluable as hostesses, office helpers and backstage. The Women's Board sponsors an annual puppet presentation for children and also operates the Gift Boutique and Bank One Art Gallery. *New members are welcomed.*

### 2003-2004 Officers

|   |  |
|---|--|
| <b>Thelma Coss</b> . . . . . President              | <b>Jane Krimmer</b> . . . . . Recording Sec.         |
| <b>Randie Sass</b> . . . . . First Vice President   | <b>Nancy Zeigler</b> . . . . . Treasurer             |
| <b>Jean Questel</b> . . . . . Second Vice President | <b>Evelyn Stiggers</b> . . . . . Assistant Treasurer |
| <b>Jacqui Sukie</b> . . . . . Corresponding Sec.    |  |

### Committee Chairs

|   |   |
|---|---|
| Art Gallery . . . . . <b>Marci Paolucci</b> | Hospitality . . . . . <b>Marta Williger</b>   |
| Boutique . . . . . <b>Mary Wolfman</b>      | <b>Janet Budai</b>                            |
| Boutique Treasurer <b>Betty Watterson</b>   | Newsletters . . . . . <b>Jacqui Sukie</b>     |
| Costumes . . . . . <b>Barbara O'Connor</b>  | <b>Pat Weill</b>                              |
| <b>Janet Heilmeier</b>                      | Puppet Show . . . . . <b>Jill Forster</b>     |
| <b>Henrietta Cook</b>                       | <b>Leslie Lund</b>                            |
| Hostesses . . . . . <b>Patrice Bechtol</b>  | Membership . . . . . <b>Jacqui Sukie</b>      |
| <b>Pat Obenour</b>                          | <b>Thelma Coss</b>                            |
| Cast Suppers . . . . . <b>Wendy Cooley</b>  | House Committee . . . . . <b>Jane Krimmer</b> |
|   | <b>Betty Williams</b>                         |

### Boutique Treasures

Our lobby Gift Boutique is a fund-raising project of our Weathervane Women's Board. Shop from one hour before curtain time or during intermission for great gift items. Prices are extremely reasonable and the items on sale include a

delightful variety from clowns and animal figures to pens, pins and earrings. Our Boutique volunteers will also assist you with information on purchasing gallery art works.



### Building the Arts

Akron Art Museum  
Blossom Music Center  
Inventure Place  
Weathervane Playhouse



123 South Miller Road, Akron, Ohio 44333 Phone: 330-867-2400



## Our Generous Donors

*Weathervane Playhouse gratefully acknowledges the financial support of our corporate, foundation and individual members. Lack of space keeps us from including a complete list in this playbill. A complete list is included in our mainstage playbills.*

### SUPER FOUNDERS (Gifts of \$10,000+)

|                    |                              |                           |
|--------------------|------------------------------|---------------------------|
| City of Akron      | Estate of Clarence Gilham    | Ohio Arts Council         |
| The GAR Foundation | Northern Ohio Golf Charities | Weathervane Women's Board |

### FOUNDER'S CIRCLE (Gifts of \$5,000+)

|                                  |                             |                               |
|----------------------------------|-----------------------------|-------------------------------|
| Akron Community Foundation       | Eileen & H. Peter Burg      | Charles E. & Mabel M. Ritchie |
| Alpha Phi Alpha Fraternity, Inc. | Mary B. Demetros Foundation | Memorial Foundation           |
| Bank One                         | John A. McAlonan Fund       | Lloyd L. & Louise K. Smith    |
| Ann & Dave Brennan               | OMNOVA Solutions Foundation | Memorial Foundation           |
| Bridgestone/Firestone Trust      | Sisler McFawn Foundation    | <b>FirstEnergy Foundation</b> |

### PLATINUM MEMBERS (Gifts of \$1,000+)

#### INDIVIDUALS

|                                     |                                       |
|-------------------------------------|---------------------------------------|
| Fred & Francia Albrecht             | Mr. & Mrs. George Moxon*              |
| Elynmarie Kazle & Mark A. Zimmerman | Thomas R. Trotter & Martha Kaltenbach |

#### CORPORATIONS & FOUNDATIONS

|   |   |
|---|---|
| Babcox Publications                             | Michelson Foundation                    |
| Glenn R. & Alice B. Boggess Memorial Foundation | Walter Mirapaul Foundation              |
| Brennan Family Foundation                       | Laura R. & Lucian Q. Moffitt Foundation |
| Lisle M. Buckingham Fund of ACF                 | The RC & Katherine Musson               |
| The Goodyear Tire & Rubber Company              | Charitable Foundation                   |
| Robert A. Kutz Charitable Trust                 | M. G. O'Neil Foundation                 |
| C. Blake & Beatrice McDowell Foundation         | <b>TARGET</b>                           |

### GOLD MEMBERS (Gifts of \$500 - \$999)

|                       |                          |
|-----------------------|--------------------------|
| Susan & Patrick Baker | Dr. Jack & Libby Jacobs  |
| John Grafton &        | Kathy & Doug Kohl        |
| Richard Worswick*     | Dr. & Mrs. Edward Koosed |
| Eileen & Ralph Greene | Richard & Leslie Lund    |
| Janet & Jim Heilmeier | David & Orlene Makinson  |

#### CORPORATIONS & FOUNDATIONS

|                       |                             |                                |
|-----------------------|-----------------------------|--------------------------------|
| A. Schulman           | InfoCision Management Corp. | National City Bank             |
| FirstMerit Bank, N.A. | Myers Industries, Inc.      | Summit County Internists, Inc. |

### SILVER MEMBERS (Gifts of \$250 - \$499)

|                                 |                             |
|---------------------------------|-----------------------------|
| David Ashe                      | Helen & Chisna Fleming      |
| Juanita & Chic Carlson*         | Barry Friedman              |
| Mildred Collis                  | Roy & Mary Hartz*           |
| Dr. Paul Daum*                  | Jim & Charlotte Horvath*    |
| Margaret J. Dietz*              | Jeffrey P. Houck*           |
| Dr. Richard & Mary Beth Ellison | Dr. Amy Lee*                |
| W. Scott & Sandra Emerick       | Dr. Douglas & Karen Lefton* |

#### CORPORATIONS & FOUNDATIONS

|                           |                               |                            |
|---------------------------|-------------------------------|----------------------------|
| Air Enterprises           | Charter One Bank              | Maynard Family Foundation  |
| Annaco                    | Ernst & Young LLP             | Roetzel & Andress          |
| Bober, Markey, Fedorovich | FW Albrecht Family Foundation | Steere Enterprises         |
| Business Interiors        | GoJo Industries               | Welly Building Company     |
| Cedarwood Companies       | Jeter Systems                 | Zuckerman Consulting Group |

\*Denotes Board of Trustees





## Board of Trustees

Weathervane Community Playhouse is a non-profit 501(c)(3) corporation operated by a board of volunteer trustees representative of the general community. Regular monthly meetings of the Board of Trustees are open.

### Officers

|                          |                     |                             |                     |
|--------------------------|---------------------|-----------------------------|---------------------|
| George Moxon . . . . .   | President           | Jim Horvath . . . . .       | Assistant Treasurer |
| Richard Worswick . . .   | First V. President  | William Glaeser . . . . .   | Secretary           |
| Mary Beth Kluge . . .    | Second V. President | Margaret J. Dietz . . . . . | Historian           |
| Laura Kerchner . . . . . | Treasurer           | Steven P. Schmidt . . .     | Immed. Past Pres.   |

### 2003-2004 Trustees

|                     |                    |               |                   |
|---------------------|--------------------|---------------|-------------------|
| Kathy Ashcroft      | Dr. Rozelle Duncan | Karen Lefton  | Thomas Stephan    |
| Barbara Baskin      | Christopher Esker  | Myron Lewis   | Elinore Stormer   |
| Clarence F. Carlson | Jon Fiume          | John Morgan   | Mary Warholy      |
| Thelma Coss         | Roy Hartz          | Doug Mory     | Mark A. Zimmerman |
| Paul Daum, Ph.D.    | Jeffrey Houck      | Sheila Motter |                   |
| Michael Davis       | Dr. Amy Lee        | Jack Steele   |                   |

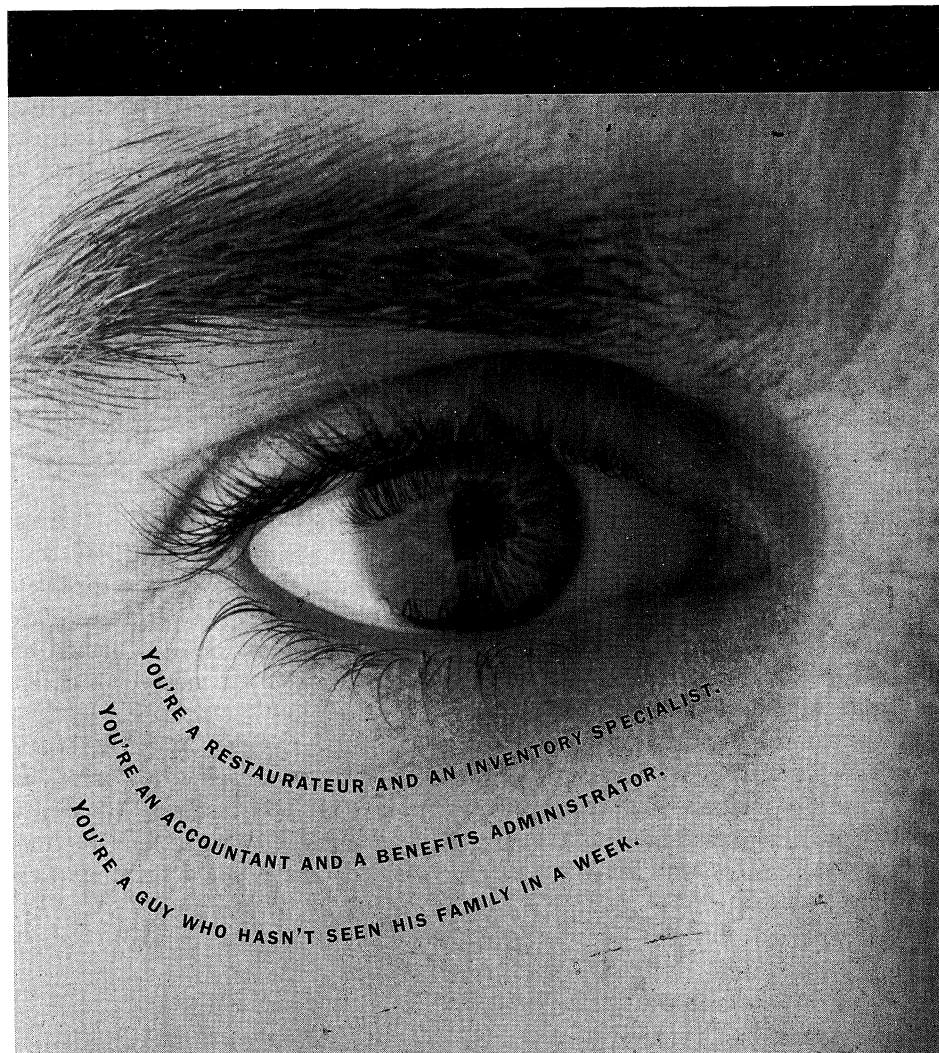
### Advisory Board Members

|                   |                    |                    |                  |
|-------------------|--------------------|--------------------|------------------|
| Mary Adams        | W. Scott Emerick   | Libby Jacobs       | Dr. Susan Speers |
| Chuck Ayers       | Helen Fleming      | Eric Jones         | Bob Velotta      |
| Bunny Ballance    | Jill Forster       | Ardith M. Keck     | Shari Whitfield  |
| Madeline Bozzelli | Dr. Penelope Frese | Dede Klein         | Mary Whitmer     |
| Stanley Brandt    | Ian Haberman       | Eileen Moushey     | Mary Wolfman     |
| Ann Brennan       | Richard Harris III | Jim Nilsen         | Mel Wolfman      |
| Nancy Cates       | Bob Hasman         | Jo Ann Oelschlager | Mona Wolfman     |
| Ron Cimini        | Marilyn Heagerty   | Margo Snider       | June Zeno        |
| Frank Comunale    |                    |                    |                  |

### Production Board

**Mark A. Zimmerman -- Chair**

|  |                                 |
|--|---------------------------------|
| Auditions . . . . .                            | M.J. Coulson & John Cotter      |
| WOMEN'S BOARD Costume Shop . . . . .           | Sandra Harding                  |
| FIRST ENERGY Lighting Dept. . . . .            | Mark A. Zimmerman               |
| Properties . . . . .                           | John Riazzi                     |
| Sound . . . . .                                | Charles Korecki & Tom C. Barnes |
| Stage Management . . . . .                     | Nikki Rafferty                  |
| <i>Ex-Officio:</i>                             |                                 |
| Women's Board Representative . . . . .         | Thelma Coss                     |
| Producer of Youth/Family Productions . . . . . | Sean McConaha                   |
| Technical Director . . . . .                   | Alan Scott Ferrall              |
| Salon Series Coordinators . . . . .            | Tom Abdoo & Suzanne Smith       |
| Play Selection Chair . . . . .                 | Beverly Smith                   |
| Executive Director . . . . .                   | Elynmarie Kazle                 |
| House Managers . . . . .                       | John Cotter                     |



### We're the bank who can help.

Second National Bank can handle all of your company's financial and banking needs. One of our advisors will be your inventory specialist, your accountant, your benefits administrator, your payroll manager, and your stress reliever. Which means you can go easily about your workday. And still make it a workday. **Smart Business Services** *The people making banking better.*







## In Our Bank One Visual Arts Gallery

Three Ursuline Nuns provided the exhibit for our production of *Nunsense* which is the display seen currently in the Bank One Visual Arts Gallery. All the sisters share an interest in the visual arts and in art therapy counseling.

**Sister Kathleen Burke**, O.S.U., Ph.D. is founder of the Master of Arts in Art Therapy Program of Ursuline College. Her ministry uses art to heal, integrate and enrich the quality of life for others. A native Cleveland, Sister, as a child, attended art classes sponsored by the Cleveland Museum of Art. As an Ursuline, she chaired the Art Department, presented the initial proposal for the Wasmer Gallery, and founded the Ursuline College Master of Art in Art Therapy Program. Currently she is a professor at Ursuline College and coordinates the Ursuline ArtSpace Program. She completed a post-doctoral fellowship in Cambridge, Massachusetts, then traveled extensively for two years. Her study of photography produced many images from her journeys.

**Sister Donna Kristoff**, O.S.U., a native Cleveland also, has been an Ursuline sister and educator for 45 years. She received an Master of Science degree in art education from Pratt Institute and a Master of Fine Arts degree in painting from Rochester Institute of Technology. Currently she is graphic designer for the Catholic Diocese of Cleveland Foundation and is an active member of the International Thomas Merton Society, of which she is president. Her work is inspired by religious icons and monastic literature seen during pilgrimages to France and Spain.

**Sister Rosaria Perna** teaches graphic design at Ursuline College. "My work reflects my love for nature. I enjoy working in a variety of styles from natural to spontaneous abstract line drawing to digital experimentation." Sister has a Bachelor of Arts degree from Ursuline College, a Master of Arts degree in painting and drawing from New York University, and a Master of Fine Arts degree in visual communication design from Kent State University.

## Project STAGE

Project STAGE is a program developed by Weathervane Playhouse to bring to young audiences the excitement of live theater. Teachers and students receive study guides and pre-performance, in-class discussions are conducted free of charge by Weathervane staff and volunteers. The **special Project STAGE ticket price is \$8.**

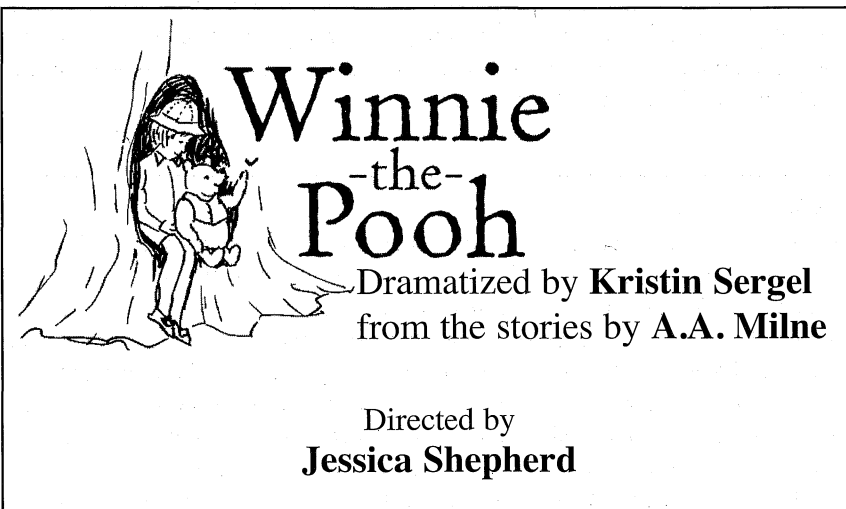
*Ain't Misbehavin'*, January 12 - February 5, 2005; *The Grapes of Wrath*, February 16 - March 6, 2005 and *Little Women*, March 18 - April 8, 2005 are the Project STAGE offerings for the 2004-2005 season. We will be glad to help you make the arrangements to bring your students. Call our Education Department at 330-836-2323 ext. 17.



## Weathervane Community Playhouse

70th Season – 2004-2005 -- Youth Production # 62

July 17 - August 1, 2004



Scenic Designer  
**Alan Scott Ferrall**

Properties Designer  
**Ashley Shaw**

Costume Designer  
**Sandra Harding**

Stage Manager  
**Alison Cooper**

Lighting Designer  
**Steve Lawson**

Sound Designer  
**Danielle Harris**

Winnie the Pooh is produced by special arrangement with  
**Dramatic Publishing**  
311 Washington Street, Woodstock, IL 60098.

Weathervane Youth/Family productions are sponsored in part by **GOODYEAR**

All Weathervane productions are sponsored in part by **Ohio Arts Council**

Weathervane Community Playhouse, 1301 Weathervane Lane, Akron, OH 44313-5186  
Ticket Office: 330-836-2626 – Fax: 330-873-2150 – Email: [wcpakron@aol.com](mailto:wcpakron@aol.com)  
[www.weathervaneplayhouse.com](http://www.weathervaneplayhouse.com)



## Our Director

**Jessica Shepherd** is a senior theatre education major at Ashland University. Her past directing credits include *The Compleat Works of William Shakespeare, Abridged* at Ashland and Christopher Durang's *Medea* and *The Role of Della* in Firestone High School's One Act Festival in 2003 and 2004. Jessica is a graduate of the Miller South and Firestone High School Visual and Performing Arts programs. She would like to thank Mark A. Zimmerman and Elynmarie Kazle for their support and guidance through the years and Sean McConaha for this opportunity.

### Director's Notes...

The character of Winnie-the-Pooh is among the best-loved and most recognizable children's story characters around. When one hears his name, different images come to different people. To the young, Pooh Bear is a pudgy, golden bear with a small red shirt and a host of friends whose musical talents have brought us songs like *Rumbley in My Tummy* and *The Wonderful Things about Tiggers*. To those of the older generations, one may envision the straw yellow bear of Christopher Robin as described through the stories of A.A. Milne. The main challenge in directing this piece was to reconcile the two. How do we present the original story and characters to children who expect the new "Disney" standard? While it was a hard decision, it became clear that it was almost impossible. The only hope was to take the simple magic and colorful atmosphere of the modern 100-Acre Wood and place the classic characters into such a setting. As you watch the performance, I hope you get a sense of the magical world of Pooh Bear and his friends and become enthralled in their simple troubles and happy endings. I hope you enjoy our "journey back to the days of Christopher Robin..."

**\*For your safety, we request that you remain seated until the house lights have come up at intermission and after the curtain call.**

**\*The use of cameras, recording equipment and laser pointers is forbidden during this performance.**

**\*As a courtesy to fellow audience members, please make sure that cell phones and pagers are turned off during the performance.**

**\*Please do not bring food or drink in the auditorium.**

**\*NOTE: In case of an emergency in which the performance cannot continue, Calamity Vouchers will be issued for a future performance. Thank you.**



## Winnie the Pooh Cast

|                         |                     |
|-------------------------|---------------------|
| Christopher Robin ..... | Britton Jon Herbert |
| Pooh .....              | Benjamin Fortin     |
| Piglet .....            | Krissa Duhon        |
| Owl .....               | Elizabeth Krochka   |
| Eeyore .....            | Ian Bolden          |
| Kanga .....             | Claire Meneer       |
| Roo .....               | Sarah Hinline       |
| Rabbit .....            | Tessa DiTirro       |
| Animal .....            | Joirdan A. Dunlap   |
| Animal .....            | Brian Hirsch        |
| Animal .....            | Shea Lee            |
| Narrator .....          | Helena Olee         |

The 100-Acre Wood  
There will be one 15-minute intermission.

# GOODYEAR

## TRUST IN OUR PERFORMANCE

GOODYEAR PROUDLY SUPPORTS THE  
**WEATHERVANE  
COMMUNITY PLAYHOUSE**





## Cast Callboard

**BRITTON JON HERBERT** (Christopher Robin) is a seventh grader at Lake Center Christian School in Hartville. Making his Weathervane debut, Britton is an accomplished performer having recently been seen in *Titanic* at The Players Guild. An excellent student, his other interests include music and singing. Britton will be traveling to Los Angeles later this year for television and film auditions.

**BENJAMIN FORTIN** (Pooh) returns to our Weathervane stage. He was last seen in *Joseph and the Amazing Technicolor Dreamcoat* and was in our 2001 production of *Charlotte's Web*. Benjamin is a member of the ETC All-American Show Choir and enjoys reading, golf and music. He hopes to pursue a career in medicine. A Stow resident, Benjamin will be a seventh grader at Kimpton Middle School.

**KRISSA DUHON** (Piglet) is performing in her fourth Weathervane production. Last seen in our production of *The Emperor's New Clothes*, Krissa is a seasoned performer and enjoys spending time on her hobbies of swimming, basketball and piano. She is a student at Miller South School for the Performing Arts in Akron.

**ELIZABETH KROCHKA** (Owl) is a newcomer to the Weathervane stage. A student at Hyre Middle School in Akron, Elizabeth is making her stage debut here at Weathervane. Her hobbies include swimming, singing and playing the clarinet.

**IAN BOLDEN** (Eeyore) is returning to Weathervane this summer after appearing in last year's production of *Charlie and the Chocolate Factory*. A student in theater at Miller South School in Akron, Ian has also performed with the Ingenue Theatre Company and enjoys acting and playing the saxophone.

**CLAIRE MENEER** (Kanga) is a seventh

grader at Copley-Fairlawn Middle School. Claire was last seen in our production of *The Emperor's New Clothes* and has performed at ANTIC in Cuyahoga Falls. She played Jessie in *Annie Get Your Gun* at Carousel Dinner Theatre.

**SARAH HINELINE** (Roo) is making her Weathervane debut in *Winnie-the-Pooh*. A third grader at Seiberling Elementary, Sarah was recently seen in *The Music Man* at the Galaxy Players in Wadsworth and competes on a dance competition team.

**TESSA DITIRRO** (Rabbit) is another newcomer to the Weathervane stage. A sixth grade student at Old Trail School, Tessa is new to the stage but enjoys acting along with her other favorite hobbies of reading, hiking, tennis and traveling.

**JOIRDAN A. DUNLAP** (Animal) is a third grader at Chapel Hill Christian School in Akron. She studies ballet and tap and has begun piano lessons. She is making her stage debut in *Winnie-the-Pooh*.

**BRIAN HIRSCH** (Animal) is really excited to be in his first theatre production. A second grader at Chapel Hill Christian School, Brian is an honor roll student who participates in the Speech and Chess teams at school and his hobbies include soccer and basketball.

**SHEA LEE** (Animal) is another first-time actor in this production. A student at Canton Montessori School, Shea appeared in her school play *Star Search*. Her interests include swimming, reading and playing the violin.

**HELENA OLEE** (Narrator) was seen in our 2003 Youth/Family production of *Joseph and the Amazing Technicolor Dreamcoat* and has performed with Medina Show Biz Company. A sixth grader at Highland Middle School in Medina, Helena enjoys singing and riding horses.



## Backstage Callboard

**ALISON COOPER** (Stage Manager) is a home-schooled student who is making her first run at being a production stage manager. Alison served as assistant stage manager for this past season's production of *The Crucible* and has been active at Weathervane for almost ten years.

**SANDRA HARDING** (Costume Design) is enjoying her second time around at Weathervane, winning several awards for her beautiful designs for Weathervane's 1999 production of *Romeo and Juliet*. She has been involved with costuming since 1994. She has designed costumes for Weathervane productions of *The Complete Works of William Shakespeare Abridged*, *Hamlet* and *A Lesson Before Dying*.

**DANIELLE HARRIS** (Sound Design) is a sophomore Technical Theatre major at Kent State University. She has been involved in 22 productions in her career, including four as an actress and five as an assistant stage manager. She has just worked on the running crew of a world premiere, *Blindness: The Irresistible Light of Encounter*, which is moving to New York.

**ASHLEY SHAW** (Properties Design) is a seasoned Weathervane performer who has

appeared in several Weathervane shows, most noticeably as Charlotte in our 2001 production of *Charlotte's Web*. After working as her father's assistant on props for several years, this is Ashley's first solo design.

**ALAN SCOTT FERRALL** (Scenic Designer/Technical Director) has attended The Ohio State University and the Tisch School of the Arts at New York University. He has three Chanticleer Awards, one as Stage Manager for *Fences*, the others as lighting designer for *A Man for All Seasons* and *The Laramie Project*.

**STEVE LAWSON** (Lighting Design) has now designed his first Weathervane production having first worked on props for *Oliver!* He is enjoying flying lessons and sings in the Cleveland Orchestra and Blossom Festival choruses.

**KATHY KOHL** (Assistant Technical Designer) began her volunteer career on the lighting crew for *Oliver!* and has since gone on to become our Assistant Technical Director. She is also active in the show choir and theatre programs at Miller South School for the Performing Arts and Firestone High School.

### Future Events

#### Chanticleer Awards Night

August 21, 2004

Dinner and Awards

Akron Woman's City Club

#### Nunsense A-MEN!

August 23 & 24 at 7:30 p.m.

#### 04-05 Mainstage Season Opener:

*Noises Off*

September 8 - October 3, 2004

#### The Songs of Harry Warren

Kate Loitz Cabaret

Oct. 23 at 10:30 p.m.

Oct. 24 at 7 p.m.

#### AUDITIONS!

*Joseph...* by appointment

Sept. 13 & 14 between 4 - 7 p.m.

*The Grapes of Wrath* by appointment

Sept. 20, 21, 22 starting at 7 p.m.

*Little Women* by appointment

Jan. 10 & 11 between 4 - 7 p.m.



## Production Team Members & Crews

**Alan Scott Ferrall -- Technical Director**

Kathy Kohl -- Assistant Technical Director

### SET CONSTRUCTION

John Keller  
Ruth Richardson  
Kevin Ford  
Tom Marshall

John Hujar  
Spencer Burke  
Lee Lechner

### COSTUMES

Randi O. Sass  
Betty Williams  
Dorothy Kies

Karen Burrigde  
Pat Weill  
Jennifer Long

### PROPERTIES

Rebecca Stickle  
Danielle Shaw  
Karen Herbert

Rozanne Malivuk  
Nicholas Fortin  
Emily Meneer

### SOUND

Bridget Quinn  
Mallory Stanley  
Amanda McIntire

Jessi Nemeth  
Andrea Nemeth

### LIGHTS

Ben Lappin  
Leah Magnus  
David Magnus

Kenda Patterson  
Jennifer Stickle  
Michelle Vargo

### Acknowledgments

Vaughn Austin -- OCTA Representative  
Weathervane Women's Board  
Weathervane Staff  
Parents of the Cast & Crew  
Nonsense Belated Thanks to:

The Akron Central YMCA  
Doug Kohl  
Cuyahoga Falls YMCA  
Sandy Takacs

Special thanks to:

Margaret J. Dietz for going  
"Above and Beyond" for  
Weathervane's annual Gala  
Fundraiser on June 26, 2004!!

### Weathervane Playhouse Staff

**Elynmarie Kazle -- Executive Director**

**Keith D. Campbell**  
Supervisor, Front-of-House  
& Patron Relations

**Alan Scott Ferrall**  
Scenic Designer/Technical Director

**Janis L. Harcar**  
Director of Marketing &  
Development

**Sean McConaha**  
Dir. of Ed./Producer Youth Prod.

**John A. Cotter**  
Business & Public Relations Assistant

**Kathy Kohl**  
Assistant Technical Director

**Caroline Klein**  
Bookkeeper

**Dreajean L. Brown**  
Data Services Manager

**Britta Nugent**  
Intern



## Our 70th Season Schedule

### Youth/Family Productions



**Our 5th production  
of Joseph...!**

Musical by Tim Rice &  
Andrew Lloyd Webber  
**Nov. 20 - Dec. 19**



Adapted by Marisha  
Chamberlain from the story by  
Louisa May Alcott  
**March 18 - April 8, 2005**



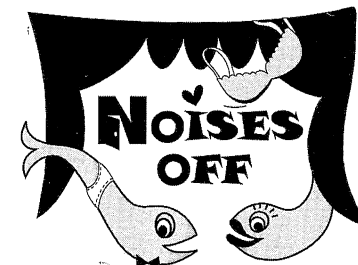
**Rumpelstiltskin**

Half Life-Size marionettes perform  
this children's classic  
**Sat. May 7, 2005**  
**at 11 a.m. & 1 p.m.**

*Fall Classes begin  
September 18th*

Exciting theater classes  
for children ages 3 - 18  
at Weathervane  
and in Medina (at the  
Grace Drake Center).  
Call 330-836-2323 X 17

### Mainstage



**Mainstage Season Opener**

Comedy by Michael Frayn  
**Sept. 8 - Oct. 3**

**Three Days of Rain**

Oct. 20 - Nov. 7



**Ain't  
Misbehavin'**  
Jan. 12 - Feb. 5, 2005

**The Grapes of Wrath**

Feb. 16 - March 6, 2005

**The Tale of the  
Allergist's Wife**

April 13 - May 8, 2005

**The Rocky  
Horror Show**



June 8 - July 3, 2005

**Forever Plaid**

June 23 - 26, 2005



# **Weathervane Community Playhouse**

is a proud member of



Ohio  
Community  
Theatre  
Association

**FUN COSTUMES**  
& MAGIC EMPORIUM

Costumes • Wigs • Hats  
Make Up • Santa & Bunny Suits  
Mardi Gras Beads  
St. Patrick's Day • Luau  
Book Reports

**10% Off your next purchase**  
thru 09/30/04

4130 State Road • Cuyahoga Falls  
**330-923-3339**

**summitartspace**  
**plus**

James B. McCarthy  
Executive

**SUMMIT COUNTY**  
**THE HIGH POINT**  
**OHIO**

a  
partnership

*James B. McCarthy*  
James B. McCarthy, Executive

## *Accessibility*

Weathervane Playhouse is handicapped accessible. Ramps are available to the front doors, auditorium and seating.

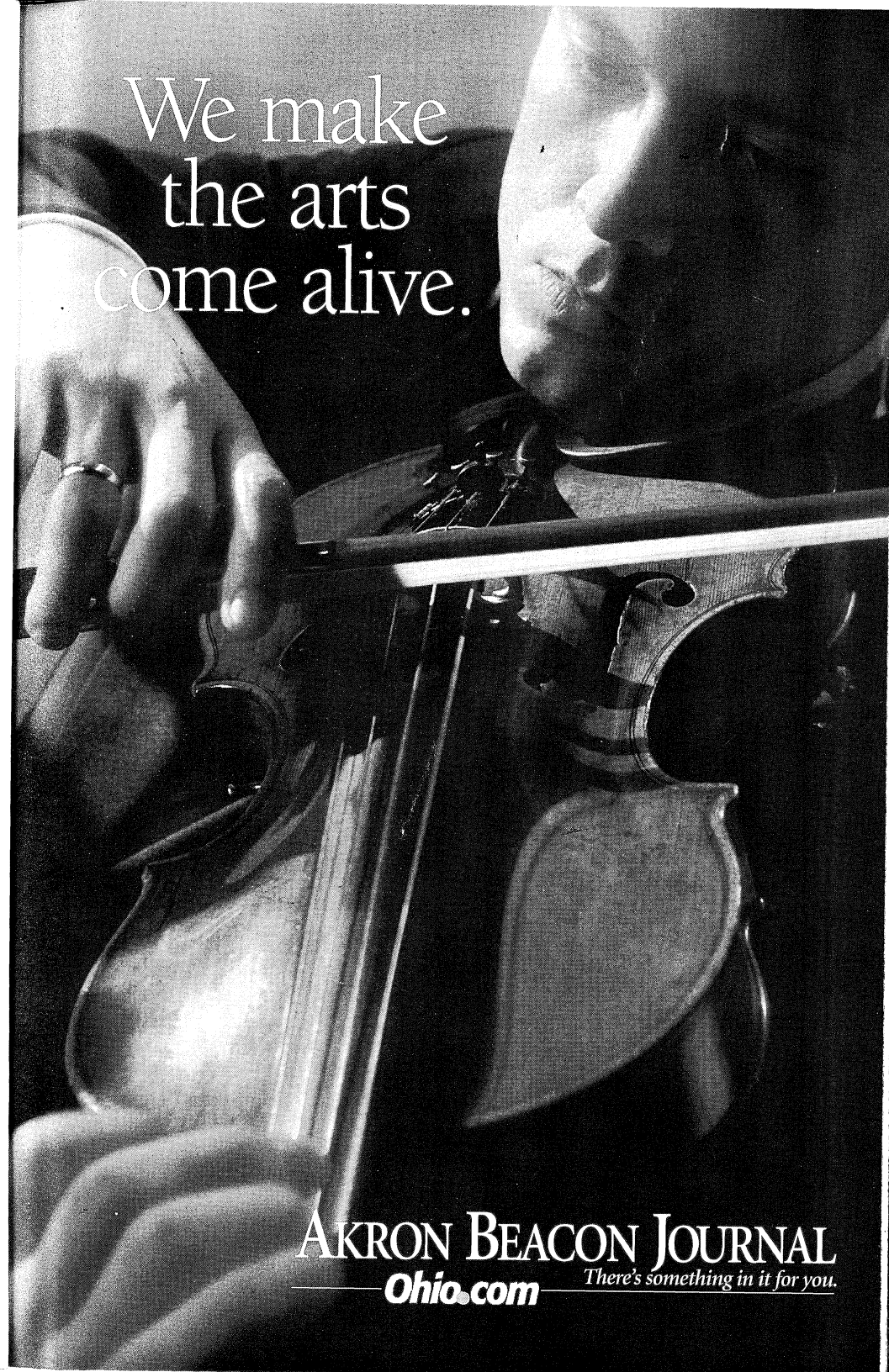
Assisted-listening devices for the hearing impaired are available at the Ticket Office.

Large-Type program inserts are available at the Ticket Office. These copies are not full playbills but contain information unique to this production. These inserts are photocopied and are available in limited quantity.

American Sign Language interpretations are scheduled for selected Sunday performances.

Ohio Relay System 1-800-750-0750 TDD. Call to have your ticket order placed.

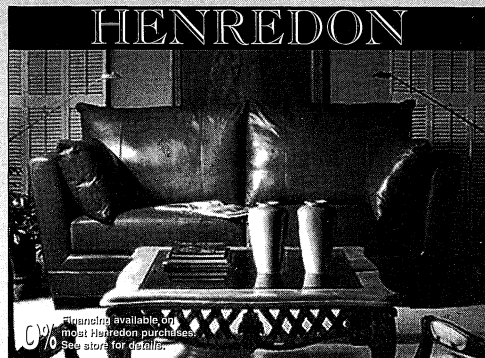
We make  
the arts  
come alive.



**AKRON BEACON JOURNAL**  
**Ohio.com** *There's something in it for you.*



The Best Place For Fine Furniture in Greater Akron is at Wayside



- Over 200,000 sq. ft. of inventory.
- Providing friendly, responsive service for over 66 years.
- Professional interior designers on staff.
- We buy and sell for less ... every day.

Fine pieces from these quality manufacturers on display:

Kincaid • Pennsylvania House  
Stanley • Lexington • Nautica  
Lane • Smith Brothers • Flexsteel  
Bob Timberlake • Cochrane  
Serta • Broyhill • Clayton Marcus  
Canadel • Howard Miller • Hooker  
Sumter • Crescent • Dozens More

Visit our newly-opened 10,000 square-foot addition!

**Wayside**  
furniture

"Where You'll Find Better Furniture Priced Lower"

1367 Canton Road Akron On Route 91,  
just 1/4 mile south of Route 224  
Shop Daily 10 to 9, Saturday 10 to 6, Sunday 1 to 6  
Visit our website: [www.wayside-furniture.com](http://www.wayside-furniture.com)

330-733-6221  
Toll Free 877-499-3968

**Stinaff's**  
DATA FORMS & SYSTEMS SINCE 1935



We're a great cast  
of performers  
in meeting your  
full color printing and  
business form needs!

44 S. Summit St. • Akron, OH 44308  
330-434-2106 • Fax 330-434-9376

**SPOTLIGHTS**

Your Ticket To ENTERTAINMENT

WEST SIDE  
**Leader**

Reaching 43,600 homes  
and businesses in one  
of America's best  
demographic markets.

GREEN  
**Leader**

Reaching over  
10,000 homes and  
businesses  
in the city of Green.

3075 Smith Road Suite 204 • Akron, OH 44333  
(330) 665-9595 • Fax: (330) 665-9590

**Graf**  
**Growers**  
Garden Center • Farm Market

1015 White Pond Dr. Akron  
330.836.2727  
[grafgrowers.com](http://grafgrowers.com)

Bring this ad to  
Graf Growers & receive

**\$5 off \$25**  
reg. price plant purchase  
through 8/31/04

Be Anybody.

**Our Lady of the Elms**

A Dominican Education for Girls.

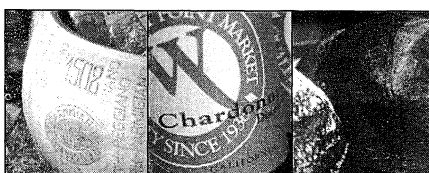
Open House

Sun, Sept 14: 1-3 p.m.  
Wed, Oct 8: 6-8 p.m.  
Sun, Nov 2: 1-3 p.m.  
Wed, Mar 31: 6-8 p.m.

For more information, please contact  
the Office of Admissions at:

1220 W. Market St.  
Akron, Ohio 44313-7108  
(330) 867-0918  
[www.ourladyoftheelms.org](http://www.ourladyoftheelms.org)

Start Here.



**Entertain Your Palette**

Specialty foods and wines  
Mrs. Ticklemore's Tea Room  
Beside the Point Café  
Movable Feast box lunches & dinners  
Catering  
Gift baskets for all occasions

**WEST POINT MARKET**  
1711 West Market St., Akron OH 44313  
330-864-2151 / 800-838-2156  
Mon-Sat 8am-7pm / Sunday 10am-5pm  
[www.westpointmarket.com](http://www.westpointmarket.com)



**PAPAJOE'S**  
Succorini's SINCE 1932  
Dinner before or after the show.  
Minutes from  
**Weather Vane Playhouse**  
Restaurant - Deli - Wine Shoppe  
Banquets - Catering  
1561 Akron-Peninsula Road  
(330) 923-7999

THE  
**Grotto**  
ON MERRIMAN

**Seafood & Steaks**  
at casual  
dining prices.

1841 Merriman Rd.  
Akron, OH 44313  
**330.869.4981**





## Membership Warehouse

FOR BUSINESS & HOME

### A SAM'S CLUB Membership gives you access to:

Huge Savings  
Brand-name Merchandise  
Great member Benefits

3750 "J" West Market St.  
Fairlawn, Ohio 44333

Marketing 330-665-5337  
Main 330-665-5336  
Fax 330-665-5430

*Weathervane Playhouse  
thanks  
Tiffany Bakery  
for the beautiful opening  
night cakes.*

**Tiffany's Bakery**  
Elegant Selections



**Wedding Cakes**

330-753-0017  
2176 Romig Road  
Akron, OH 44320



## Volunteering at Weathervane

Weathervane began as a volunteer organization and continues its growth thanks to the time and talent that members of our community invest in it. Our on-stage performers have worked long and hard to earn your applause. But their work is supported by many other unseen men and women who've helped build and paint sets, run the lights and sound, make sure that properties and set dressing items are in their proper places and do other backstage labor from stage managing to costuming and make-up. Supporting those who are actively involved in putting on each show are still more volunteers who usher, house manage, sell tickets, keep our office running and serve on our Board of Trustees, Board committees, Production Board and Women's Board.

Their spirit is the backbone of our continuing operations, a valued support on which our professional staff relies.

Each month, we acknowledge the outstanding Volunteers of the Month in our lobby, but those volunteers represent all who commit their time and interest to create a great theater experience for everyone who's come to see this show.

If you have friends or relatives who volunteer generously at Weathervane, we hope you'll take a moment to thank them for their help and their support of the cultural enrichment of our community. Better yet, join them! Call us and we'll help you win your own share of the applause for a "jolly good show," an experience that offers unique challenges with every performance.

### Share the Annual Chanticleer Celebration

Shortly after the final production of each season, Weathervane volunteers and friends share an exciting party to acknowledge outstanding performances by performers and technical volunteers. The top performers are awarded rooster statuettes—Chanticleers—in recognition of their work, as voted by Chanticleer "judges." It's a great night to get together, share hopes, fun and festivities and is open to all.

Awards are presented for outstanding lead performances by a male or female

in a drama or comedy, outstanding support performances, and outstanding lead and support in a musical as well as choices in technical achievement. Chanticleers are also awarded for Properties, Lights, Costumes and Sound Design, plus Best Production of the season. In addition to performance and production awards, the event also recognizes the Top 25 outstanding volunteers of the season. We welcome you to take part in the biggest nail-biting party of the year.

GREGG LAUCK

800.795.1366  
Fax 330.342.4826



THE  
**GREENHOUSE**  
FLORIST



Mon. - Fri. 9-5  
Sat. - 9-3



Teleflora

ORCHARD PLAZA \* 5825 DARROW RD \* HUDSON, OH 44236

**Don Drumm Studios & Gallery**

It all comes together here.

437 Crouse Street, Akron, OH 44313  
330.253.6268  
M-F: 10-6, S:10-5



### Different stories. Proven approach. Real success. Lawrence School.

Northeast Ohio's leader in learning disabilities education since 1969!

1551 East Wallings Road • Broadview Hts. • 440-526-0717 • [www.lawrenceschool.org](http://www.lawrenceschool.org)

# MALONE

CHALLENGING  
CONTEMPORARY  
CHRISTIAN

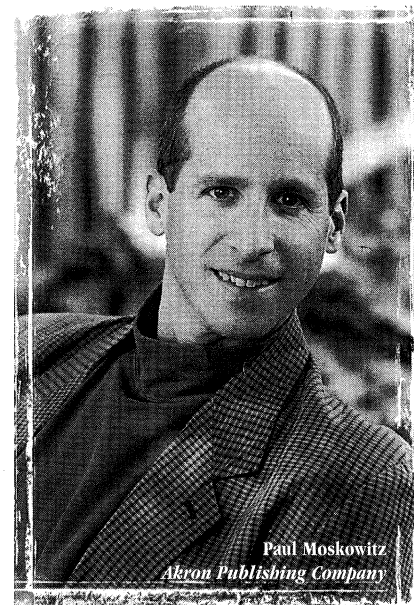
**God has blessed us with great powers of expression**, and Malone College wants you to appreciate the energy such expression generates. At Malone you can immerse yourself in the arts—just dive in! There are a wide variety of opportunities in the visual arts, music, and theatre, both on and off campus.

**Looking for an “arts experience” at Malone?**

You don't have to look far: Chancel Players, Chapel Band, Chorale, Concert Band, Instrumental Ensembles, Jazz Band, Marching Band, MC Comedy, Mime Team Ministry, Mural Projects, Outreach Music & Drama, Theatre Productions, Vocal Ensembles, Women's Concert Choir, and the list goes on...

**MALONE**  
COLLEGE  
CHRIST'S KINGDOM FIRST  
[www.malone.edu](http://www.malone.edu)

Why is this man smiling?



*Because his customers are too.*

If you haven't been smiling lately, please call Akron Publishing Company for your next custom publishing project. We will produce brochures, magazines, catalogs, directories, books and more... all of them from concept to completion. Akron Publishing Company will be the only call you'll need to make.

**AKRON**  
PUBLISHING COMPANY

phone: 330.929.2703 ▲ fax: 330.923.0856  
e-mail: [akronpublishing@neo.rr.com](mailto:akronpublishing@neo.rr.com)

*We do really good work, so that you'll look really good.*





## Volunteer Opportunities

Complete and detach this form and return it to the Ticket Office or mail to:  
Volunteer Opportunities, 1301 Weathervane Lane, Akron, OH 44313-5186

NAME \_\_\_\_\_

ADDRESS \_\_\_\_\_

CITY \_\_\_\_\_ ZIP \_\_\_\_\_ PHONE \_\_\_\_\_

I am interested in the following areas: (Check as many as you wish)

|   |                                    |   |
|---|------------------------------------|---|
| <input type="checkbox"/> Acting         | <input type="checkbox"/> Costuming | <input type="checkbox"/> Fund Raising           |
| <input type="checkbox"/> Set Building   | <input type="checkbox"/> Orchestra | <input type="checkbox"/> Box Office             |
| <input type="checkbox"/> Painting       | <input type="checkbox"/> Sound     | <input type="checkbox"/> House Managing         |
| <input type="checkbox"/> Usher          | <input type="checkbox"/> Lighting  | <input type="checkbox"/> Play Reading/Selection |
| <input type="checkbox"/> Backstage Crew | <input type="checkbox"/> Classes   | <input type="checkbox"/> Board Membership       |
| <input type="checkbox"/> Other _____    |                                    |   |

☐ Best time to reach me at the above phone number \_\_\_\_\_

☐ I am a subscriber. ☐ I am a donor.

I HAVE AN OPINION...

About tonight's play \_\_\_\_\_

\_\_\_\_\_

About the current season \_\_\_\_\_

\_\_\_\_\_

About future seasons \_\_\_\_\_

\_\_\_\_\_

I have a fund-raising idea. \_\_\_\_\_

\_\_\_\_\_

We appreciate, and often respond to, opinions offered about our work. Be sure to fill in your name and address above if you wish a response or would like to be contacted.



## Volunteer Responsibilities

Here's a quick introduction to the responsibilities volunteers undertake to make our shows work. If you'd like to try your hand at any of these jobs, please call us. We'll help you learn! Volunteers with 100 hours or more of service are eligible for a special Weathervane membership!

**\* Stage Management** - Duties include assisting the director throughout the rehearsal period, calling cues, keeping backstage safe and orderly, and coordinating the technical needs of the show with the actors. A great opportunity for those who enjoy planning, communicating and taking charge. Once the director's work is done, it's the Stage Manager who runs each performance.

**\* Set Construction** Use your building skills, carpentry or painting techniques to help make illusion come to life. Help is needed days and evenings.

**\* Costumes** Designers and workers are vital. We invite skilled and unskilled seamstresses to make or alter costumes, create patterns, care for costumes during a show and keep our wardrobe department organized.

**\* Lighting** Experience is a plus, but you can learn by assisting others who know computers and electrical requirements. We'll train eager volunteers to help hang, focus, and add color to lighting instruments. We'll also teach you how to run the light board and follow spots. *Nobody can see the show without you.*

**\* Sound** Create the music and sound effects tapes that enrich the aural envi-

ronment for each show or add "live" backstage sound. Run the sound system for technical rehearsals and productions.

**\* Properties** All the items that help "dress" a set and all those used by actors in rehearsal and performance (from tea sandwiches to "deadly" weapons and "shattering" windowpanes) must be borrowed, built or cooked. Many volunteers are needed to work on each performance.

**\* Office Volunteer** If you enjoy dealing with the public, we can use your help during office hours and on show nights to assist in taking money and answering the phone to take reservations. You may also help with mailings, work with staff, and greet customers and visitors.

**\* Ushering** Welcome audience members with your smile, show them to their seats, pass out programs, and serve refreshments at intermission. Your help is always welcome.

**\* House Manager** This representative greets the audience, tears tickets and guides theater-goers to ushers for seating. You'll work with the stage manager to coordinate the timing of intermissions and remain in the lobby throughout the show to handle any emergency.

## Weathervane Community Playhouse

is a proud member of



Ohio  
Community  
Theatre  
Association



# Luigia

"An Akron Tradition Since 1949"

- Award Winning Food
- Casual Dining
- Old World Elegance

Featuring Our Famous  
Homemade

- Pizza
- Lasagna
- Antipasto

**OPEN 7 DAYS**  
105 N. MAIN ST.  
**330-253-2999**



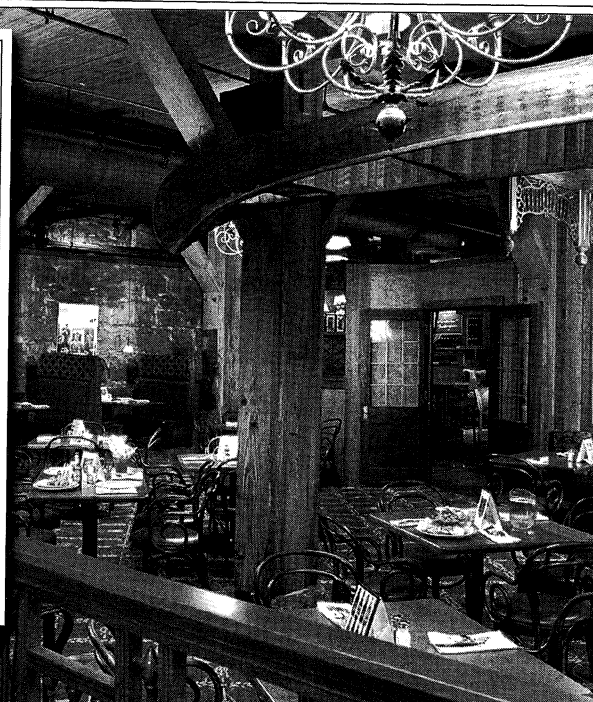
*A healthy  
child is  
music to  
our ears.*



Akron  
*Children's*  
Hospital

*Feels Like Family*

One Perkins Square  
Akron, Ohio 44308-1062  
(330) 543-1000  
[www.akronchildrens.org](http://www.akronchildrens.org)




Great  
Night Out  
Deserves  
A Good  
Ending...

Stop at the  
Whistle Stop  
Tavern

Located in Quaker Square  
Downtown Akron  
330.253.5970

Featuring great  
food & drinks

Experience our wine list  
Visit our new and  
unique shops



# Kindermusik®

a good beginning  
never ends

Singing, Movement & Instrument Play,  
Ages infant - 7

**Daniel's Music Studio**  
BATH • RICHFIELD • FAIRLAWN  
(330) 659-3173  
[www.kindermusikneohio.com](http://www.kindermusikneohio.com)

---

**Kindermusik® with Miss Terri  
& Friends**  
STOW RETAIL PARK • 4962 DARROW RD.  
Also visit our DrumPlay Store or have  
your Birthday Party with us!  
(330) 655-8499 • (877) 650-8320  
[www.kindermusikwithmissterri.com](http://www.kindermusikwithmissterri.com)

## The CUTLER Family of Companies

*Under One Roof...*



CUTLER/GMAC Real Estate,  
Akron/Canton's real estate leader, is a  
diversified one-stop, total homeownership  
company. Whether you are looking for  
a new home or preparing to sell one, we  
can make your dreams a reality, with the  
convenience of a real estate, mortgage  
and title company under one roof.

**CUTLER**  **Real Estate**

TITLE  
AGENCY **1**

MORTGAGE **1** ONE

[www.cutlergmac.com](http://www.cutlergmac.com)

*Allows You Time To Enjoy What's Really Important.*



# FIVE *At* FIVE

CONCERTS OF UNIVERSAL INSPIRATION  
ON SUNDAY AFTERNOONS AT 5 O'CLOCK

SEPTEMBER 21, 2003

THOMAS HEYWOOD  
AUSTRALIAN ORGAN VIRTUOSO

OCTOBER 19, 2003

FAURÉ REQUIEM & ORGAN SOLOS  
WESTMINSTER CHOIR, FIRESTONE SYMPHONIC CHOIR,  
CHAMBER ORCHESTRA AND ORGAN

DECEMBER 7, 2003

AMAH and THE NIGHT VISITORS  
A FULLY STAGED CHRISTMAS CLASSIC

FEBRUARY 29, 2004

OHIO STATE UNIVERSITY MEN'S GLEE CLUB  
A SPECTACULAR 90 VOICE MEN'S CHORUS

MAY 9, 2004

HITS FROM THE OPERATIC & BROADWAY STAGE  
PERFORMED IN WRIGHT-HERBERICH HALL

WESTMINSTER PRESBYTERIAN CHURCH  
1250 WEST EXCHANGE STREET, AKRON, OHIO  
330.836.2226

## *Beware of the Dreaded No-Show*

Have you ever seen empty seats at a sold out sporting event or concert? Weathervane has the same problem. Single-ticket buyers and subscribers who may have exchanged from another performance wonder why they weren't given those prime empty seats for the evening.

When you buy a subscription, you are promising to come to the theater for that ticketed performance and we hold your seat(s). These subscription seats are held until intermission. This, additionally, makes it impossible to tell if a performance is ever really sold out and annoys ticket buyers who see that they could have been seated in a better spot.

Subscribers: Please call the Ticket Office at 836-2626 if you will not make your ticketed performance. Thanks.

## *Weathervane Traditions*

**Meet the cast** Many cast members spend a few minutes in the lobby area to meet and greet friends after performances. It's your chance to thank them for their performance.

**Intermission Tea** is served with our compliments by our volunteers. Soft drinks are available at a nominal cost.

**Opening Night Receptions** welcome audiences on first Friday performances. We provide light snacks and refreshments after the show so you can share in the celebration.

**For your sweet tooth** snacks are available for purchase before the show and during intermission. Refreshments (other than water) are not permitted in the auditorium.



## Who Gets On Stage?

Our volunteer performers come from throughout greater Akron and Northeastern Ohio. They've committed themselves to four or more weeks of rehearsals plus performances. Their greatest reward is your applause.

Many performers come with substantial theatrical experience. Others are new to the stage. Auditions are open to all and our non-traditional casting policy opens the way for many performance opportunities. Except in cases where race, gender, age or disability is essential to the play, all roles are cast on the basis of talent.

Local newspapers carry audition dates and times or call Weathervane at 330-836-2626 to be added to the audition mailing list. Some directors prefer to set appointments for audition times and may ask that you come prepared with a brief

monologue, improvisational subject or musical number. Copies of plays scheduled or audition scenes are often available for a nominal deposit.

When you arrive at the theater on audition nights, you'll learn about the rehearsal and performance schedule. You may also register as a production volunteer if you're interested in learning about the technical opportunities in the show.

You may be asked to return for callbacks and will be notified of the director's cast selection as soon as possible. Please note that if you don't win the role you've wanted so badly, it may not necessarily reflect on your talent. The director's choice of cast members must take many factors into account to develop the proper "relationships," style and reality of the ensemble. Don't be discouraged.



**What If... every doctor knew as much  
about caring as curing?**

At NEOUCOM, we teach  
not only the *science* of  
medicine, but also the  
*art* of healing.

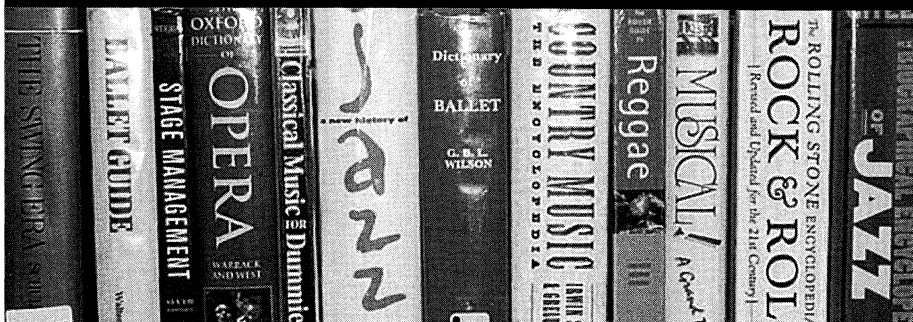
**What If... everyone had a  
NEOUCOM doctor?**

 **NEOUCOM**  
NORTHEASTERN OHIO UNIVERSITIES  
COLLEGE OF MEDICINE  
[www.neoucom.edu](http://www.neoucom.edu)

NEOUCOM is an equal opportunity employer and educator.



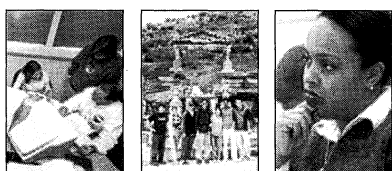
# Top-shelf arts and culture (Within easy reach)



**Akron-Summit County  
Public Library**  
Main Library, Mobile Services  
and 17 branches located  
throughout Summit County  
330-643-9000  
[www.ascpl.lib.oh.us](http://www.ascpl.lib.oh.us)



Your source for novel gifts  
and gently used books  
Operated by the  
Friends of Main Library  
1040 E. Tallmadge Ave.,  
Akron 330-643-9070  
[www.lsom.org](http://www.lsom.org)



## Hiram College Hiram College

Intimate Learning. Global Reach.

Experience our distinctive curriculum. Hiram has two different learning formats for students—for young adults, the traditional college offers our renowned academic program in a residential environment; for adult learners, the Weekend College lets students earn their degrees with minimal interference in work/family responsibilities.

Call 1.800.362.5280 or visit [www.hiram.edu](http://www.hiram.edu).  
For information on the Weekend College program, please call 330.569.5161.

## Fun and Free for the Whole Family!



### 2003-2004 Exhibitions

**Hans Hofmann: Selections from the  
Berkeley Art Museum Collection**  
September 20, 2003 – January 3, 2004

**Jim Dine Prints: 1985-2000**  
January 17 – March 27, 2004

**Akron  
Art  
Museum**

70 East Market Street  
Akron, Ohio 44308-2084  
330.576.9195  
[www.akronartmuseum.org](http://www.akronartmuseum.org)

The arts  
start here.

Art starts with inspiration.  
Inspiration starts with new experiences.  
New experiences are our business.  
That's the Akron Advantage.

[www.uakron.edu](http://www.uakron.edu)



*"At The University of Akron, we have set the stage for world-class excellence in the arts. By developing new generations of artists, partnering with arts organizations, and providing local venues for internationally-acclaimed theatrical and musical productions, we continue to help define the social and cultural landscape of Northern Ohio."*

— Luis M. Proenza  
President, The University of Akron

The  
University  
of Akron

The University of Akron is an Equal Education and Employment Institution