

The Sixth Annual



July 15 - 17, 2016



Weathervane
PLAYHOUSE

The 2016 8x10 TheatreFest

(8 plays, 10 minutes each!)

SCHRÖDINGER'S CASH

by Barry Wood

Directed by Jay Sigler & Kyla Williger

SHADOWPLAY

by T. Mason Brown

Directed by Brian Westerley

VERY PRIVATE DETECTION

by Carl L. Williams

Directed by Chanda Porter & Greg Emanuelson

MYRTLE BEACH SUNRISE

by Vivian C. Lermond

Directed by April Deming

15-minute intermission

PORT CITY BLUES

by Jody McColman

Directed by Scott K. Davis

THIRD WINDOW FROM THE RIGHT

by Scott Mullen

Directed by Brandi Eaton

CONFESSIONS AT THE AVENUE P BARBER SHOP

by Peter A. Balaskas

Directed by Will Crosby & Joshua Larkin

ADORABLE DORIS

by Irwin Rosenblum

Directed by William Morgan



SCHRÖDINGER'S CASH

Playwright

Barry Wood lives in a thatched cottage in rural England, with his wife and three children. As it's always quite hectic at home, most of his writing is done in an old red telephone box at the end of his street. He is a member of a local amateur dramatic group and has written several plays for them, including his latest; a Shakespearean pantomime entitled *Much Ado About Panto* (available on lazybeescripts.co.uk).

Barry, like all Englishmen, is related to the Queen and travels everywhere in a black cab. He only ever eats fish and chips – while wearing his bowler hat – and is always saying sorry. He hopes you enjoy his play, but if not, he would like to offer his sincere apologies.

Directors

Jay Sigler (Co-Director) is excited to be performing and directing with the 8x10 TheatreFest. Usually seen on stage, Jay has branched out to working front-of-house, backstage and even helping to design props. He is very proud to say that he volunteered in some capacity for every show of Weathervane's 2015-2016 season. He was last seen acting on the Weathervane stage as Sir Robin in *Monty Python's Spamalot*. By day, he is a mathematics teacher at Mogadore High School. He would like to thank friends, family and everyone who comes out and supports community theater!

Kyla Williger (Co-Director) is thrilled to play pretend with her friends again in her third year of the 8x10 TheatreFest. This year, she is both acting and directing. She would have written as well, but she writes what she knows, and has no experience receiving a large envelope of cash (but demonstrations are welcome). She was last seen in Weathervane's *The 25th Annual Putnam County Spelling Bee*, and her next project is *Love Letters* at Western Reserve Playhouse. When not at the theater, Kyla practices law at Williger Legal Group. She thanks her friends and family for their unwavering support.

Cast

John Williamson (Erwin Schrödinger) is a lifelong resident of Northeast Ohio and has been acting for a number of years in feature films. This is his first performance at Weathervane and he is very excited to be part of such a great project. John thanks his wife for her never-ending support and encouragement!

Sue Jeromson (Annie Schrödinger) is happy to be returning to the 8x10 TheaterFest for the fifth year and to have moved up in the animal kingdom from mayfly to dragon to human. She'd like to thank the talented playwrights for the privilege of performing their works.

Danielle Gruhler (Martha Chambers) is thrilled to make her 8x10 debut after having appeared on the Weathervane stage in numerous productions. She says, "Thanks to Marty, Charlie, and Henry—for feeding my spirit and keeping my on my toes!"



SHADOWPLAY

Playwright

T. Mason Brown is a life-long Akron resident and a graduate of Firestone High School. He spent his youth as a classical musician playing in the U.S. and Europe, then took a break from the arts only to return via writing. He has written privately up until now and is grateful to have been selected as a finalist for his first competition. He is delighted to be making his authorial debut at Weathervane, the same venue that helped inspire his love of theater as a child. He is grateful to Kaeth Shaughnessy for acting as editor & Brian Westerley for being a fantastic director and guide. Thanks also to MacKenzie Bogusch and Daniel Walker for breathing life into the characters he wrote. And a special thank you to Nathan Hach for giving up other work to bring to life the character he inspired. *Audentes Fortuna Adiuvat*

Director

Brian Westerley (Director) has lived & worked in Ohio, New York & Los Angeles. Locally, Brian has directed productions of *Cat on a Hot Tin Roof*, *Pilots of the Purple Twilight*, *Night of January 16th* and *Lend Me a Tenor*. He also directed the third-place finisher, *One Man Show*, at the 8x10 TheatreFest last year at Weathervane. He took *Other Desert Cities* and *Confessions From The Ladies Room*, both presented by Wolf Creek Players, to the Regional and State OCTA competitions, winning eleven awards between the two. Brian has won numerous other theatrical awards, including a trophy for directing (*Aladdin*), Outstanding Supporting Actor (*Twilight of the Golds*) & three in a row as Outstanding Lead Actor (*Butterflies are Free*, *A Christmas Story* and *Peanutman*). Brian wishes to dedicate his part in *Shadowplay* to the victims & families of the Orlando tragedy.

Cast

MacKenzie Bogusch (Charlotte) is thrilled to be a part of this amazing event in her first time on the Weathervane stage. She recently appeared in the CFHS One Act Festival show *Small World*. Past roles include *Up the Down Staircase* (Vivian), *Almost, Maine* (Maric/Suzette), *This is A Test* (Mother) and *Dark of the Moon* (Mrs. Allen). She plans to study stage management and performance at Kent State University in the fall. She would like to thank her family for supporting her every step of the way.

Daniel Walker (Michael) is currently a senior at Kent State University studying acting. Favorite roles at Weathervane include *The Man Who Came to Dinner* (Richard Stanley), *Oklahoma!* (Joe), *Hamlet* (Guildenstern), *The Witch of Blackbird Pond* (John Holcomb), *The Taming of the Shrew* (Peter), *The Outsiders* (Paul) and *Clybourne Park* (Kenneth). Credits elsewhere include *The Boys Next Door* (Barry Klemper) and *Women Beware Women* (The Ward).

Nathan Hach (Freddie) is a recent graduate of Case Western Reserve University whose prior credits include *The Addams Family Musical* (Lucas), *Evil Dead: The Musical* (Jake), *Stop/Kiss* (Peter) and *Confessions from the Ladies Room* (Colin).



VERY PRIVATE DETECTION

Playwright

Carl L. Williams is a Houston playwright whose full-length and one-act plays have won numerous national playwriting competitions. His plays have received over 250 productions around the country, including off-off-Broadway. More than 35 of his plays have been published, with several one-acts appearing in anthologies. Carl is now retired after 28 years as a social worker with The Salvation Army. He is a member of the Dramatists Guild of America and also the author of a Western novel called *Fool's Play*.

Directors

Chanda Porter (Co-Director) is delighted to be back directing at the 8x10 TheatreFest after a two-year hiatus. Most recently, Chanda directed and choreographed *Hello, Dolly!* (Carnation City Players) and *My Way, A Musical Tribute to Frank Sinatra* (Stow Players). Onstage credits include *Always, Patsy Cline* (Louise), *Back to Bacharach and David, Making God Laugh* (Ruth), *The Bikinis* (Annie), *The Drowsy Chaperone* (Chaperone), *Cabaret* (Sally Bowles), *City of Angels* (Alaura/Carla) and *The Rocky Horror Show* (Magenta). By day, Chanda works in the legal department at Akron Children's Hospital.

Greg Emanuelson (Co-Director) is making his 8x10 debut assisting Chanda Porter direct *Very Private Detection* after last appearing on stage as Vice Principal Panch in *The 25th Annual Putnam County Spelling Bee* earlier this season. Greg says, "Thanks to Adam, Shani & Alex for making this experience so enjoyable and fun!"

Cast

Adam C. Alderson (Jerry Tucker) lives in Stow and is delighted to return to the Weathervane stage, where he last appeared as Greg in *Relatively Speaking*. Adam has both acted and directed in this festival since 2012. He wants to thank his wife, Patti, and son, Alex, for their love and support.

Alex J. Nine (Drake Logan) returns for his fourth 8x10 TheatreFest, having co-directed *The Silver Bullet* with Chanda Porter, directed *Table for Two*, and acted in *Black Friday* and *One Man Show*. Weathervane audiences may also remember him from recent productions of *The Man Who Came to Dinner* and *Every Christmas Story Ever Told (And Then Some!)*.

Shani Ferry (Diane Logan) has mainly performed at Actors' Summit, where she was a company member for 12 years and most recently appeared in *Talley's Folley*, *Quilters* and *Making God Laugh*. When not performing, Shani is a ballet mom of two daughters who are company members of Ballet Excel Ohio.



MYRTLE BEACH SUNRISE

Playwright

Vivian C. Lermond has penned 19 one-act plays, all recipients of multiple productions across America. Her full length drama/comedy, *Back to Bethlehem (PA)*, premiered Off-Broadway in 2006 at the Manhattan Theatre Club.

Aside from writing, Vivian is the former Producing/Artistic Director of the highly successful Irish Theatre Project, a venue that produced one-act, Irish-themed plays by emerging Columbus playwrights (2001-2006). Vivian is currently Executive Story Editor for Gallagher Literary, an L.A. talent management company, where she evaluates screenplay submissions. She also free-lances for afilmwriter.com, where she is the lead script analysis specialist for all stage plays. Vivian has been a proud member of The Dramatists Guild since 1998.

Director

April Deming (Director) is proud to be a Weathervane Trustee. She recently was seen on stage as Sonia in our production of *Vanya and Sonia and Masha and Spike*. She spent 36 years in Green Bay, WI, where she served on the Board of the Green Bay Community Theatre. April is delighted to be participating in the 8x10 TheatreFest and thanks her lucky stars that she moved to an area with such quality community theatre. Thanks also to husband Dave for tolerating her passion for theatre.

Cast

Pat Robertell-Hudson (Esther) is thrilled to be performing for the first time at Weathervane although she is no stranger to the 8x10 TheatreFest. Her play *Trips with Grandma* won the first 8x10 TheatreFest and she co-directed the winning play from 2014 (*A Telegram in the World of Smartphones*) with Bill Morgan. She has frequently performed at Stow Players, where she is on the board, and Western Reserve Playhouse. Thanks to April for this opportunity; and Marci and Scott for sharing the stage. "I hope you enjoy V. Lermond's play."

Marci Paolucci (Pauline) is delighted to be onstage again at Weathervane. She has performed in over 100 productions in both professional and community theatre venues since 1984. *Driving Miss Daisy* (Miss Daisy), *The Lion in Winter* (Eleanor) and *The Glass Menagerie* (Amanda) are just a few of her favorite roles. Thanks to April Deming for this opportunity. Much love to her family for all their support. Marci would like to dedicate her performances to her dear sister, Francesca.

Scott K. Davis (Sid) see his Director bio for *Port City Blues*



PORT CITY BLUES

Playwright

Jody McColman is an actor and playwright based in Portland, Maine. As an actor, Jody can frequently be seen on stage in southern Maine. As a playwright, Jody's short plays have been produced all across the country. "Thanks to Weathervane for the opportunity, and love, as always, to Mary, my audience of one."

Director

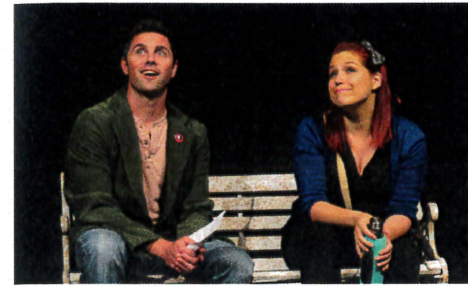
Scott K. Davis is thrilled to be returning for his fifth consecutive TheatreFest as preliminary judge, actor and director. He has been involved with theatre for over 30 years, and he is always excited by the opportunity to help bring these pieces to life for the first time. This year proves no different. He would like to thank the cast, crew, directors, audience, and his family and friends for helping make this year another success!

Cast

Joshua Larkin (Narrator) see his Director bio for *Confessions At The Avenue P Barber Shop*

Rose Gabriele (Mike) is thrilled to make her third appearance at Weathervane, and was most recently seen as Daisy Stanley in *The Man Who Came To Dinner*. She performs in professional murder mysteries and works as a patient actor in various large medical facilities. She also does on-camera videos, voice-overs and print work. Hugs to her incredibly supportive family and friends!

Jay Sigler (Rock) see his Director bio for *Schrödinger's Cash*



THIRD WINDOW FROM THE RIGHT

Playwright

Scott Mullen is a longtime Hollywood screenplay analyst and screenwriter, a two-time winner of Amazon Studios screenwriting contest, whose film *The Summoning* aired on TV One in 2015. Since becoming a playwright late last year, his ten-minute plays have been performed from London to New York to Los Angeles and many places in between.

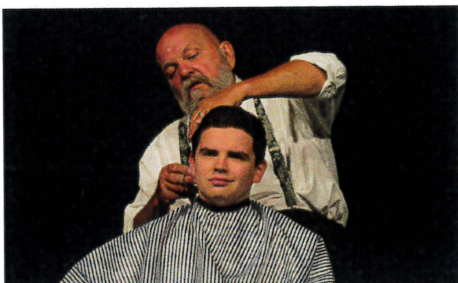
Director

Brandi Eaton (Director) is delighted to be participating in this year's 8x10 TheatreFest. She was most recently seen on-stage (and face-planting) in the chorus of *Hello, Dolly!* at Carnation City Players in Alliance. Her 10-minute play *A Telegram in the World of Smartphones* was the first-place winner at the 2014 8x10 TheatreFest at Weathervane and was performed in Sydney, Australia as part of the 2015 Short + Sweet Festival. She would like to thank her friends and family for always being supportive and awesome. She will next be directing one weekend of *Love Letters* at Western Reserve Playhouse and will be appearing onstage in *You Can't Take it With You* at Weathervane.

Cast

Kyla Williger (Kate) see her Director bio for *Schrödinger's Cash*

Mason Shuman (Henry) returns for his third 8x10 experience to show the world that you can repeat the past. Playing a "Henry," Mason feels compelled to mention the late, great Henry Bishop, with whom he worked on this very stage over 20 years ago in *Finian's Rainbow*. "Thanks for the memories, Henry!"



CONFESSIONS AT THE AVENUE P BARBER SHOP

Playwright

Peter A. Balaskas is a recent transplant from Southern California, who presently lives in Clearwater, Florida. His play, *Call These Delicate Creatures Ours, and Not Their Appetites*, was a 2016 finalist at Theatre Odyssey's 11th Annual Ten-Minute Play Festival. His novel, *The Grandmaster*, has been awarded 2007 Best Science Fiction Novel by the Hollywood and New England Book Festivals. The title piece of his story collection, *In Our House: Tantalizing Tales of Terror*, was nominated for the Pushcart Prize for fiction, and three stories from that collection were performed at The New Short Fiction Series in Hollywood. His journalism can be found in *LA Splash*, *Newport Beach*, *Laguna Beach*, *Montage* and *Bespoke Concierge* magazines. His website is www.peterabalaskas.com

Directors

Will C. Crosby (Co-Director) is a Client Service Representative at Mobile Meals in Akron. Originally from Lakewood, Will has worked all over the Cleveland area as an actor, director, and stage manager. Most recently, Will was seen as Prince Herbert/Not-Dead-Fred in Weathervane's production of *Monty Python's Spamalot*. Other notable roles include *Peter and the Starcatcher* (Smee), *Guys and Dolls* (Nicely Nicely Johnson), *The 25th Annual Putnam County Spelling Bee* (William Barfee) and *The Wizard of Oz* (Cowardly Lion). He will be directing this February's production of *I Love You Because* here at Weathervane.

Joshua Larkin (Co-Director) is marking his directorial debut at Weathervane in this festival. He has recently been seen on the Weathervane stage as William Barfee in *The 25th Annual Putnam County Spelling Bee*, and Sir Galahad in *Monty Python's Spamalot*. He will be appearing in Weathervane's upcoming production of *You Can't Take It with You*. Joshua is also a recipient of an Ohio Community Theatre Association Acting Award for his portrayal of Harold "Mitch" Mitchell in *A Streetcar Named Desire* with the Little Theatre of Tuscarawas County. Outside of the theatre, Joshua works as an accountant with Skoda Minotti & Co. in Fairlawn.

Cast

Ralph Cooley (Angelo Capello) returns to the Weathervane stage following his October 2015 portrayal of Abram Van Helsing in *Dracula*. A winner of three Chanticleer Awards, a Royal Coach Award, and an Acting Excellence Award from the Ohio Community Theatre Association, Ralph is currently retired and happily married to his wife, Wendy.

Tony Heffner (Cecilio Iovini) is ecstatic to be appearing on the Weathervane stage for the first time! Past credits include *The Wedding Singer* (Glen Guglia), *Next to Normal* (Gabe), *Urinetown: The Musical* (Bobby Strong), *Bonnie and Clyde: A New Musical* (Clyde Barrow) and many others. "As always, special thanks to his family and friends. GBOGB! For bug!"



ADORABLE DORIS

Playwright

Irwin Rosenblum is a Sacramento native, where he lives with his wife, his seventeen-year-old daughter, one smart cat, and one very dumb cat. By day he manages software development from his home office for a small, Denver-based company. By night he cooks dinner for his family and leads a mostly respectable life. Irwin earned his B.S. in Engineering from the University of California and his M.S. in Critical Studies from the University of Southern California. Playwriting is a pleasure he discovered only this year. With *Adorable Doris*, you are witnessing Irwin's first produced work. No one every accused him of being an early bloomer.

Director

William Morgan (Director) is the Artistic Manager for CHSC (The Cleveland Hearing and Speech Center), where he controls the day-to-day activities of SignStage, a deaf-awareness theatre program. Bill is a nationally and internationally recognized playwright and has directed locally and nationally for over 25 years. He is a specialist at adapting mainstream children's stories into "Deaf Theatre" plays that highlight deaf characters and cultural conflicts. In 2011, Bill directed, *Trips With Grandma*, the winning 8x10 entry written by Pat Robertell-Hudson...his "one and only." Then in 2014, Bill and Pat co-directed another 8x10 winning entry, *A Telegram in the World of Smartphones*.

Cast

Adam C. Alderson (Jerry) see his bio in *Very Private Detection*

Lacy Sexton (Doris) is from Baltic, Ohio and studies theatre at Kent State University. She was recently in the student theatre festival and performed in a Dada piece called *The Gas Heart* as Mouth. This is her first time collaborating with Weathervane Playhouse and she is so thrilled to be a part of their 8x10 TheatreFest.

Pat Robertell-Hudson (Marathon Runner) see her bio in *Myrtle Beach Sunrise*

PRODUCTION STAFF

Melanie YC Pepe (Artistic Director) holds a B.F.A. in Theatrical Performance and Management from Kent State University, where she is now serving on the School of Theatre and Dance Advisory Board. She is currently working on her graduate certificate at Cornell University. At Weathervane, she has produced over 35 theatrical productions. And as always, special thanks to her husband and children for their incredible love and support.

Bobby Jones (Stage Manager) is a senior at Cuyahoga Falls High School. This is the second 8x10 he has been involved with at Weathervane. He also worked on *Peter Pan*. He was the stage manager for CFHS's spring musical, *The Sound of Music*.

Karen Burrige (Properties Design) is happy to be back designing for her sixth consecutive year for the 8x10 TheatreFest. Her Weathervane properties design credits include *The 25th Annual Putnam County Spelling Bee*, *Every Christmas Story Ever Told (And Then Some!)*, *Christmas My Way*, *The Music Man*, *Next Fall*, and *Amadeus*. Karen has also designed costumes for many shows, with a favorite being *3 Guys Naked from the Waist Down*.

Jonathon Hunter (Technical Director/Lighting Designer/Sound Designer) has designed lighting for Weathervane productions including *Monty Python's Spamalot*, *Peter and the Starcatcher*, *The Lyons*, *Clybourne Park*, *The 25th Annual Putnam County Spelling Bee*, *A Christmas Carol: The Musical*, *Ordinary Days*, *Peter Pan*, *Oklahoma!*, *A Delicate Balance*, *The Roar of the Greasepaint — The Smell of the Crowd*, *Dirty Rotten Scoundrels*, *The Music Man*, *Rodgers and Hammerstein's Cinderella* and *Pippin*. He holds an M.F.A. degree in lighting design from the University of Virginia and is currently Weathervane's Technical Director. Jonathon's other Weathervane credits include scenic design for *Vanya and Sonia and Ma-sha and Spike*, *Peter and the Starcatcher*, *A Christmas Carol: The Musical*, *Dracula*, *Hair* and *Peter Pan*, properties designer for *A View from the Bridge*, *Breaking the Code* and *The Sum of Us* and stage manager for *They're Playing Our Song*.

Special Thanks to our First-Round Judges

Scott K. Davis	Melanie YC Pepe
Susan Jeromson	Linda Ryan
Dane CT Leasure	Tom Stephan
William Morgan	

Playhouse Staff

Lisa Mansfield..... Managing Director	Melanie YC Pepe.....Artistic Director
Todd Dieringer.....Director of Marketing & Technology	Sarah Bailey.....Director of Education, Resident Director
Keith Campbell.....Director of Audience Development	Dane CT Leasure.....Education Coordinator, Literary Manager
Aimee Lambes.....Patron Services Manager	Jonathon Hunter.....Technical Director
Justyn Jaymes.....Director of Development	Kathy Kohl.....Assistant Technical Director
Stacy Bechtel.....Bookkeeper	Jasen Smith.....Resident Costume Designer, Costume Shop Manager

IN THE HARRIS FAMILY GALLERY

Weathervane's 75th Anniversary Display - The History Panels

Created by Alan Scott Ferrall

The history panels were created seven years ago to celebrate Weathervane's 75th year of continuous operation. Weathervane is now celebrating its 82nd season. The panels depict different chapters of the Weathervane story, representing who we were and the journey that brought us to where we are today. They illustrate:

The Founders There would be no Weathervane without our Four Founders, each of whom brought her own set of skills to the project.

The Buildings, in which we performed are very much a part of who we are, just as much as the people who filled them with their talents in drama and music.

Women's Board, which had its origins in service to the Theatre. The Women's Board has now become The Volunteer Guild, which continues to provide service to Weathervane in many ways.

Education, which of course, was at the forefront in the minds of our Founders. This continues to be an important aspect of Weathervane's mission.

A life in the theater These panels honor those volunteers who started their acting careers at the beginning of Weathervane's existence – from the Marshall Avenue Barn through the Copley Road years and who also spent significant time at the new building here at Weathervane Lane. Robert and Florence Beard, Margaret McKinley Moore, and Noble S. "Jim" Elderkin were all charter members of Weathervane.

Marci Paolucci
Gallery Curator

FROM THE "BARN" TO COPLEY ROAD TO THE VALLEY ...

Weathervane Community Playhouse began its run in 1935. Four artistically talented Woman's City Club members - Grace Hower Crawford, Muriel MacLachlan, Laurine Schwan, Helen Troesch -- and a core of charter members rented the empty carriage house belonging to Akron's Senator Charles Dick. Their goal was to present a wide spectrum of plays: classics, dramas, comedies, new works - even opera - with casting open to anyone who fit a part.

The women chose a carnival as their fundraiser to start paying the rent. Despite a drenching downpour, they raised \$60. They named their space "Weathervane" after the rooster on the barn's cupola. After cleaning their new home, scrounging for seats, a curtain and a coffee pot, Weathervane opened its first season. During that summer of 1935, the group presented seven fully costumed and staged plays. In 1936, Muriel MacLachlan, with the other founders, offered classes to children and adults, beginning a tradition that has become today's Education Department. In 1938, a Women's Board was formed to offer volunteer financial assistance. This group is now the Volunteer Guild.

The "barn" was home until it was sold. In 1951 the Playhouse purchased a cement block building at 1474 Copley Road and renovated it for a theater with seating capacity of 125. The all-volunteer organization hired its first employee, Nora Scott, as custodian/ticket manager. Actual management of the Playhouse was handled by the Operating Board, which reported to the Board of Trustees. Because directors were becoming scarce, the Board hired Bob Belfance as full-time Manager/Director. He held the position from 1961-1969 and from 1974-1992. During the Copley Road days, plays were presented six days a week. Because of their popularity, not everyone who wanted to see a show could be accommodated. A new home was planned.

During the 1960s, the membership's plans came together in June 1970 with the opening of Dark of the Moon here on Weathervane Lane. Longtime friend and founder Grace Hower Crawford died in 1971, remembering the Playhouse in her will. Her money enabled the Board to pare down the mortgage and set up an Endowment Fund. The last mortgage payment was made in 1974 through a contribution of the Women's Board. Three major additions followed: these included first-floor restrooms, classrooms, a costume shop, fly gallery and elevator. The former scene shop became the John L. Dietz Theater/Classroom in 2005 and the lobby project was completed in 2009 in time for the opening of the 75th season. Weathervane is proud to celebrate its 82nd Season beginning in August.

"Giving to others is a key element in well-being. It's abundantly clear from a number of studies that people who live generous lives also live happier lives."

~Dr. Stephen Post, Why Good Things Happen to Good People

Consider Becoming a Donor to Weathervane Playhouse

Lock in great seats at great prices with a Season Subscription!

Save up to 30%

Stop by the box office and subscribe today!



2016/2017 SEASON

<p>You Can't Take It With You <i>Comedy</i> Aug. 25 - Sept. 11, 2016</p> <p>Little Shop of Horrors <i>Musical</i> Sept. 29 - Oct. 16, 2016</p> <p>Red <i>Drama</i> Oct. 27 - Nov. 12, 2016</p> <p>Joseph and the Amazing Technicolor Dreamcoat <i>Musical</i> Nov. 22 - Dec. 18, 2016</p> <p>The Santaland Diaries <i>Comedy</i> Dec. 1 - 17, 2016</p>	<p>A Kid Like Jake <i>Drama</i> Jan. 12 - 22, 2017</p> <p>I Love You Because <i>Musical</i> Feb. 2 - 18, 2017</p> <p>To Kill a Mockingbird <i>Drama</i> Feb. 23 - March 12, 2017</p> <p>Jesus Christ Superstar <i>Musical</i> March 30 - April 23, 2017</p> <p>The Flick <i>Dramatic Comedy</i> May 4 - 14, 2017</p> <p>Hairspray <i>Musical</i> June 8 - July 2, 2017</p>
---	--



Don't miss the first show of the season!

July 29 - Aug. 14, 2016

Weathervane Playhouse

www.WeathervanePlayhouse.com 330.836.2626