

The perfect blend of skill,
talent and collaboration.



At KeyBank, we're proud to support the the Weathervane Playhouse in it's display of skill and talent. And we're proud to pool our skills to bring you financial services that support your talents.



1.800.KEY2YOU®
Key.com

Achieve anything.

Key.com is a service mark of KeyCorp.



Debra Brown, DSM
WEATHERVANE COMMUNITY PLAYHOUSE

Where Theater Comes Alive!

2003-2004
Sixty-Ninth Season



MY WAY

*A Musical Tribute to
Frank Sinatra*

Compiled by David Grapes

L A S V E G A S

M A I N S T A G E

production no. 503

September 10 - October 5, 2003

Give yourself a hand!

For supporting the arts in Northeast Ohio

If not for you,
these performers would be playing
to an empty house.

The arts serve many millions of people every year, contribute well over a billion dollars to the economy, and employ hundreds of thousands of creative and technical workers. Approximately a thousand people are employed in the arts in Akron alone!

Consider the benefits of involvement in the arts: Those involved in music training or music appreciation score higher in verbal and math tests, and training in music contributes to self-satisfaction and success in later life. Theater, music, dance, and visual arts programs can act to connect diverse segments of a community by providing education and encouraging dialogue, thus promoting understanding. People exposed to the arts throughout their lives read more, perform more community service, and vote more often than those who do not participate in the arts.

Thank you for supporting the arts. Thank you for helping to make your community a better place to live.



Audio-Technica U.S., Inc., Stow, Ohio

Audio and video products for home and professional use.

www.audio-technica.com

Copyright ©2003 Audio-Technica U.S., Inc. and its licensors. All rights reserved.



THE HAGEN ROWLAND GROUP
FINANCIAL CONSULTANTS

*Producing financial
performance, professional
and personal.*

BRUCE ROWLAND
INVESTMENTS • INSURANCE

330.836.9245

Fax: 330.836.6114

E-Mail: browland@ameritech.net

Securities Offered Through:
WRP INVESTMENTS, INC.
MEMBER: NASD, SIPC



Weatherlane Community Playhouse

1301 Weatherlane Lane, Akron, OH 44313-5186

330-836-2626 ♦ Fax 300-873-2150 ♦ wcpakron@aol.com ♦ www.weatherlaneplayhouse.com

Charlie and the Chocolate Factory

by Richard R. George, Novel by Roald Dahl

July 26 - Aug. 10, 2003 (*YT)

My Way

A Musical Tribute to Frank Sinatra

Compiled by David Grapes and Todd Olson

September 10 - October 5, 2003

Proof

by David Auburn

October 15 - November 2, 2003

Joseph

and the Amazing Technicolor Dreamcoat

by Tim Rice and Andrew Lloyd Webber

Nov. 22 - Dec. 21, 2003 (*YT)

The Mystery of Irma Vep

by Charles Ludlam

January 14 - February 1, 2004

The Crucible

by Arthur Miller

February 14 - 28, 2004 (*YT)

A Lesson Before Dying

by Romulus Linney, Novel by Ernest Gaines

March 10 - 28, 2004

The Dinner Party

by Neil Simon

April 14 - May 9, 2004

Pinocchio

Performed by the Piper Puppets
presented by WCP Women's Board

May 8, 2004 (*YT)

Nunsense

by Dan Goggin

June 9 - July 3, 2004

*Youth/Family Production

Patron Information

* **Emergency Exits** located at the left front of the auditorium and left side of the lobby. Front door and lobby doors will also be used.

* **Restrooms** Located in lobby alcove - wheelchair accessible.

* **Handicapped Services** Seating for a limited number of wheelchairs. Please notify in advance if needed.

* **Assistive Listening Devices** Available thanks to the generosity of Virginia and J. Robert Wilson.

* **Patrons:** Expecting a call? Leave name and seat number with the House Manager. Please turn off your cell phones, pagers and audible watches.

* **Beverages and Food** may not be taken into the auditorium during performances.

* **Use of Cameras and Recording Devices** is prohibited during performances.

* **Curtain time** Wed./Thurs. - 7:30 p.m., Fri./Sat. - 8 p.m. and Sun. - 2:30 p.m.

* **Latecomers** will be seated at the rear of the auditorium during a suitable break in the play if space is available and may take their reserved seats after intermission.

* **Exiting the Theater** Please remain seated until the auditorium lights are on. Parking lot illumination assures that getting to your car will be easy and secure.

* **Smoking** is permitted outside the building.

* **Lost and Found** items will be held at the Ticket Office until claimed.

* **Comments** from audience members are always welcomed with interest. Please feel free to write to Weatherlane to express your views and opinions about our productions. Send your comments to: *Executive Director, Weatherlane Community Playhouse.*



Weatherlane appreciates the continuing strong support of individuals, corporations, foundations and other donors who help finance the theater's operations, capital improvements and endowment program. Weatherlane is classified as a 501(c)(3) organization and contributions are tax deductible. Following are some of the many ways in which you can take pride in your support of the art of theater in our community.

* **Become a Weatherlane Member**

Your annual support makes you a voting member of Weatherlane Community Playhouse. You'll receive discounts on educational programs and other benefits, based on the membership level you choose. Members are invited to Weatherlane's annual meeting and to other special events. Memberships are renewable annually, beginning at \$75 (Contributing), and continuing at Sustaining, Patron, Silver, Gold, Platinum and Diamond Levels. Membership is actively solicited in the fall but is accepted at any time. Members are recognized in the Playbill.

* **Give a Special Gift To Say You Care**

Special donations may be made at any time to memorialize a friend or relative whose interest in Weatherlane was significant to his or her life. You may also recognize and celebrate important dates or current achievements of relatives, friends or associates.

* **Remember Weatherlane in Your Will**

What better way to carry on your tradition of support to Weatherlane than by a planned gift. By taking advantage of the tax laws which encourage charitable giving, the U.S. Government will share in the cost of your gift to Weatherlane. Your gift can fulfill a specific purpose or project while providing your estate with tax savings. To help ensure that Weatherlane will continue, please contact our Executive Director for more information.

* **Check For Matching Gifts** Many national and local corporations will

match your donations to Weatherlane, increasing your generosity to the theater. Please check whether or not your company participates in such a program.

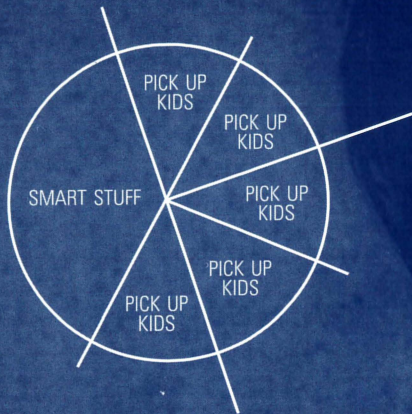
* **Designate Gifts To Local Foundations**

Several of this area's larger foundations accept memorial and tribute gifts in the name of specific organizations such as Weatherlane Community Playhouse. Such gifts help assure continuing grants to the theater's operations and special projects. We are enormously grateful for the impressive history of foundation support in this community.

* **Sponsor or Underwrite a Production**

Our productions may be underwritten by local corporations or foundations. Benefits can include private "command performances" and special receptions for employees and friends when your business chooses this important method of support. Please call 330-836-2626. We'd like to discuss this kind of opportunity with you.

* **Capital Project** The construction segment of the Capital Project included a scene shop with basement storage, a 2nd-floor classroom and rehearsal hall, soundproof production booth, elevator and fly gallery pocket above the stage and installation of the rigging system for the fly gallery. Donations for Stage Two of the project continue to purchase classroom furnishings, update the lighting system, renovate the lobby and replenish the Capital Fund for maintenance and repairs.



NPR. Classical.
Other smart stuff.
89.7 WKSU

A Service of Kent State University

Akron-Canton's
only
television
newscast
is here!



ERIC MANSFIELD
anchors Akron-Canton news

Watch Your
Newscast
Weeknights
at 6:30



MARK NOLAN
forecasts Akron-Canton weather

Proud sponsor of
Weathervane
Community Playhouse

PAX23
news
WKSU
bX53



JIM DONOVAN
covers Akron-Canton sports



History

From the Barn to the Valley



From 1935 until 1951, Weathervane was housed in a modest carriage house barn on Marshall Avenue. Some recall its cramped quarters but especially the energy and devotion of four ladies, Grace Hower Crawford, Laurine Schwan, Helen Troesch and Muriel MacLachlan, who believed that Akron deserved the best in theater and that volunteers could make it happen. A lobby plaque lists the names of other founders who shared their commitment. The rooftop weathervane gave the theater its name and logotype character, the Chanticleer.

In 1951, the organization renovated a building on Copley Road and, from 1960 - 1992, Bob Belfance served as director. Along with custodian/ticket office manag-

er, Nora Scott, the two-person staff relied on volunteer support. Paid guest directors and children's theater instructors served in part-time positions. Ticket receipts and donations helped meet expenses and created a modest endowment. A fund-raising drive resulted in construction of the present 263-seat facility which opened in 1970. Thanks to Grace Crawford's legacy, the mortgage has been paid off.

Construction made possible by the most recent Capital Campaign added classrooms, rehearsal space, scene shop, additional prop storage, elevator, library, fly gallery and fly system, a sound-proof production booth and a costume workshop.

Weathervane celebrated its 500th Mainstage production, *The Laramie Project*, during the 2002-2003 season. Thanks for being a part of our history.



Theater Education

Youth Education

Weathervane offers professionally taught classes in acting, stagecraft, musical theatre and improvisation for children up to age 18. Fall and spring classes are held on Saturdays and two-week **Hands on Theater (H.O.T.)** workshops are planned throughout the summer. The cost is minimal with a limited number of scholarships available and discounted fees for Weathervane members.

Children may also audition for roles in many productions. Casting is not dependent upon class enrollment. Participation is an extension of valuable training in every facet of production from the audition process to technical and performance experience. Family members may also have learning opportunities by participating in such productions.

Weathervane works with area schools by providing outreach information and study guides as part of our **Project STAGE** program, which brings public and private school students to see as many as five productions each season. This season, *Proof*, *The Crucible* and *A Lesson*

Before Dying will be featured in the **Project STAGE** events. Tickets are only \$8.

For information about classes or audition schedules for Youth Productions, please call our Education Coordinator at 330-836-2323.

Adult Classes

Professionally taught Adult Theatre classes include Classical Drama, Improvisation, Scenic Design, Stage Lighting and Directing. These classes help actors expand their performance and public speaking skills.

Learning On the Job

Every production participant becomes part of Weathervane's continuing education process. You'll learn from more experienced volunteers who share the creation of production and performance. If you don't have time for structured classes, sign on to become a crew member or performer. We'll help you expand your knowledge of backstage and onstage responsibilities.



Reserve: A Great Place to Be ... an exceptional place to learn

WESTERN RESERVE ACADEMY

Open House
Saturday,
Nov. 8, 2003 &
April 24, 2004

Visit classes, tour the campus and meet faculty and students. Families and prospective students of all ages welcome.

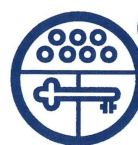
Check in between
8:45 a.m. and 11:00 a.m.
John D. Ong Library
College Street Entrance



Featured in U.S. News
& World Report

For further information: Visit Reserve
at www.wra.net or call 330.650.9717

WESTERN RESERVE ACADEMY
Hudson, Ohio 44236 • Day and Boarding 9-12



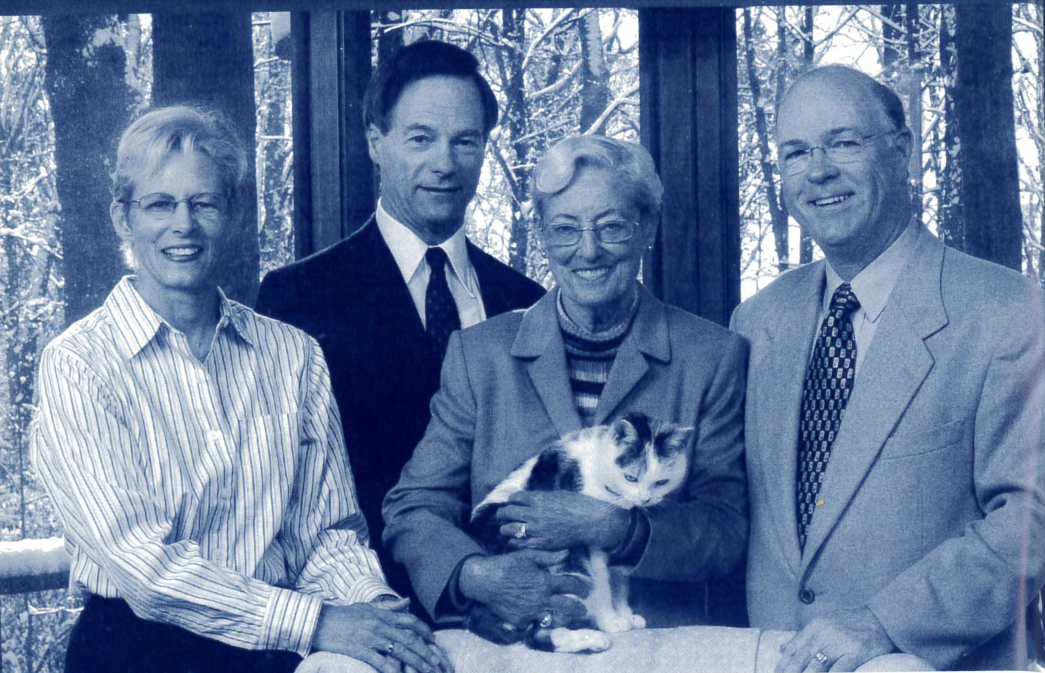
**Old
Trail
School**

**The Pathway to
Quality Education**

Preschool through Grade Eight

2315 Ira Road in Bath, Ohio near Hale Farm 330-666-1118 Visit our Web site at www.oldtrail.org





Generations of Giving.

The McDowell family's generosity and vision has transcended generations, establishing a permanent and living legacy for The University of Akron.

*From left to right:
Peggy McDowell Lloyd, C. Blake McDowell, III,
Beatrice McDowell (with her cat, Tammy),
Philip A. Lloyd, '72*

You can create an enduring legacy through a bequest to The University of Akron.

A gift through your Will or Trust helps students and provides lasting recognition for your family for generations.

To structure a charitable bequest that ensures the greatest tax results for your estate and celebrates your support of The University of Akron, please call:

David P. Horn
Director of Planned Giving
The University of Akron
330-972-6870
or e-mail: dhorn@uakron.edu

The University of Akron

The University of Akron is an Equal Education and Employment Institution.

THE POWER OF



FIRSTENERGY RECOGNIZES THE POWER OF THE ARTS AND ITS ABILITY TO ENHANCE THE QUALITY OF LIFE FOR EVERYONE IN OUR COMMUNITY.

WE'RE PROUD TO HELP SUPPORT PERFORMANCES THAT ENRICH US ALL.

FirstEnergy

2635

Ohio Arts Council

Building Ohio Through the Arts

Supporting organizations with state tax dollars to encourage economic growth, educational excellence and cultural enrichment.



Share the Arts

Ohio Arts Council
727 East Main Street
Columbus OH
43205-1796
614/466-2613
www.oac.state.oh.us

Visit today.

Arts in Ohio.com

Find what, when and where arts and cultural events are happening in Ohio...instantly! Just search the Event Finder by whatever criteria are most important to you.



Ticket Information

* **Tickets** Purchase in person or charge by phone with Visa, MasterCard or Discover at 330-836-2626, Tuesdays through Fridays 10 a.m. to 5:30 p.m. and on performance Saturdays from 11:30 a.m. to 5:30 p.m. *Reservations are also required when using coupons from your Weathervane Super Coupon Book, complimentary tickets or coupons offered from any other cooperating arts organization.* Please arrive 20 minutes before curtain time to pick up your tickets. Unclaimed tickets will be released for sale five minutes prior to curtain at the discretion of the Box Office Manager and volunteers.

* **Special seating** Please inform us if you have seating preferences due to visual, auditory or other physical needs. Please remember orders are filled on a first-come, first-served basis with season subscribers and advanced group sales taking first priority.

* **Season Subscriber Exchanges** must be phoned in at least 24 hours prior to

your originally scheduled performance. We can't always guarantee the same seats but we'll give you the closest available replacements. An upgrade fee applies when changing from a Preview Night. *If you cannot use your subscription seats, please call us at least 24 hours in advance to release them. We will recognize this as a donation.*

* **Student Rush Tickets** go on sale 30 minutes before curtain time. Students with a valid ID may purchase any remaining tickets for half price. Rush tickets cannot be reserved in advance.

* **Discounted Group Reservations** are available for groups of 15 or more. Call Weathervane at 330-836-2626 to learn how you can entertain friends, associates, or clients with a night at the theater or to plan a fund-raising event for larger groups.

* **Gift Certificates** are available at any time in any amount you choose.

* **Recycle your playbills** Anyone who doesn't wish to keep the playbill may drop it in our recycling box.

Money-saving super coupon books are available all season.

Super Coupon Books

Help You Save!

Where Theater Comes Alive!

Booklets contain eight coupons and serve as pre-paid admissions for main-stage series productions. Use them one-at-a-time or all at once!



WEST SIDE VOCAL ACADEMY

Professional Teachers — Professional Results

Voice — Acting

Ron Hazelett

Bass

330-864-0660

Susan Wallin

Soprano

Charting new paths towards the future of the Arts.

Look smart. Be smart.



Turning heads through smart design

MINX DESIGN

330.762.4126 • 1.888.GET.MINX

*The tradition continues...
distinctive retirement living*

The Merriman



The Merriman, our inaugural season, 2003 — 2004

For 52 years our home has provided a place for area seniors to receive loving care. With our commitment to preserving this tradition comes our ongoing promise to residents, families, staff, and the community that The Merriman will provide exceptional care and distinctive retirement living.

Now accepting reservations for gracious accommodations:

- Nursing Care
- Memory Care
- Gourmet Dining
- Restorative Care
- Assisted Living
- Senior Day Activities
- Wellness Programs
- Physical Therapy

For a personal tour of our distinctive residence, contact Barb Mullin at (330) 762-9341.

The Merriman, 209 Merriman Road, Akron Ohio 44303

**Supporting inspirational performances
delivered by exceptional people.**

www.brunercox.com



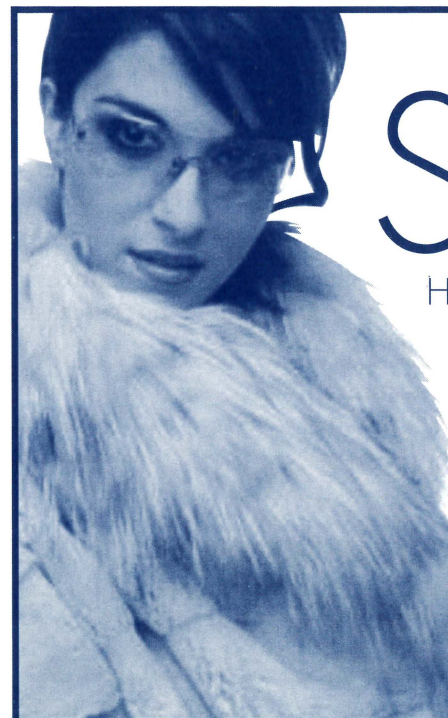
At Bruner-Cox LLP, we believe the expertise, integrity and continuity of our people allow us to deliver innovative accounting and consulting solutions to every client relationship.

Experience the value of our people.

BRUNER-COX LLP

Business Consultants & Certified Public Accountants

Our people. Your solutions.



SEXY

High fashion furs at a price
that will turn you on.



104 Summit Mall
Mon/Thu 10am-8pm • Tues/Wed/Fri 10am-6pm
Sat 10pm-5pm • Sun Closed • 330-867-2771



The Women's Board was formed in 1938 to "offer voluntary service and financial assistance to the Playhouse." Women's Board has energized youth education programs, sponsored productions, spearheaded fund raisers and paid for many of the amenities we appreciate in the Green Room/kitchen. Members of this active group are invaluable as hostesses, office helpers and backstage. The Women's Board sponsors an annual puppet presentation for children and also operates the Gift Boutique and Bank One Art Gallery.

New members are welcomed.

2003-2004 Officers

Thelma Coss President	Jane Krimmer Recording Sec.
Randie Sass First Vice President	Nancy Zeigler Treasurer
Jean Questel Second Vice President	Evelyn Stiggers Assistant Treasurer
Jacqui Sukie Corresponding Sec.	

Committee Chairs

Art Gallery Marci Paolucci	Hospitality Marta Williger
Boutique Mary Wolfman	Janet Budai
Betty Watterson	Newsletters Jacqui Sukie
Boutique Treasurer Barbara O'Connor	Pat Weill
Costumes Janet Heilmeier	Puppet Show Jill Forster
Henrietta Cook	Leslie Lund
Hostesses Patrice Bechtol	Membership Jacqui Sukie
Pat Obenour	Thelma Coss
Cast Suppers Wendy Cooley	House Committee Jane Krimmer
	Betty Williams

Boutique Treasures

Our lobby Gift Boutique is a fund-raising project of our WeatherVane Women's Board. Shop from one hour before curtain time or during intermission for great gift items. Prices are extremely reasonable and the items on sale include a

delightful variety from clowns and animal figures to pens, pins and earrings. Our Boutique volunteers will also assist you with information on purchasing gallery art works.



Building the Arts

Akron Art Museum
Blossom Music Center
Inventure Place
WeatherVane Playhouse



123 South Miller Road, Akron, Ohio 44333 Phone: 330-867-2400



ELYNMARIE KAZLE (Executive Director) begins her seventh season for WCP. She has spent 26 years in theater, first as a stage manager then in producing, fundraising and as a public relations rep for theaters across the US. She's had the pleasure of working with a wide range of artists from Mikhail Baryshnikov to Michael Korie, Ed Asner to Chita Rivera, in theaters such as San Diego's Old Globe, Sacramento Theater Company, LA Classical Ballet, Opera Columbus, Great Lakes (Shakespeare) and Brooklyn Academy of Music. Akron was important to Elynmarie early in her career when she served as lighting apprentice to Tom Skelton and Ohio Ballet in the early 1980s. Her diverse experience in Marketing/PR includes a stint with the Wall Street Journal. She is currently VP of Membership and Development of USITT, VP of the Akron Area Arts Alliance and the founder of the nationally-known Stage Management Mentoring Project. She lives in Akron with her husband Mark and son Banno.

JANIS L. HARCAR (Director of Marketing & Development) holds an M.A. in Arts Administration from The University of Akron and a B.S. in Music Education from Kent State University and has been a WeatherVane staff member since 1993. She serves as the Artistic Director of the Ravenna Community Choir and Director of St. Paul Lutheran Church Choir also in Ravenna. At the 2003 Chanticleer Ceremonies, Jan was honored with the Trustees Award.

ALAN SCOTT FERRALL (Scenic Designer/Technical Director) began at WeatherVane under the tutelage of John R. Thomas. Learning the skills necessary to work full-time in the theater, Scott was hired at Cuyahoga Falls High School as auditorium manager, where he spent the next six

years. During that time, he was awarded a Design Excellence citation from USITT for *Carousel*, and a place in *Who's Who Among America's Teachers*. He has also designed for many local high schools as well as for The Players Guild, Cleveland Signstage and Channels 45/49. Scott has earned three Chanticleer Awards -- one as stage manager for *Fences*, the others as lighting co-designer for *A Man for All Seasons* and lighting designer for *The Laramie Project*. Scott also takes great pleasure in writing the end-of-the-season revue for The Not-Ready-for-Mainstage Players who appear at our annual Chanticleer Awards Dinner.

SEAN McCONAHA (Director of Education and Producer of Youth/Family Productions) holds a dual major in Theater Performance and Pre-Law from West Virginia Wesleyan College and an M.A. in Theater from The University of Akron. He is a free-lance actor and director throughout Northeastern Ohio. Sean directed the OCTA award-winning production of *Romeo and Juliet* as well as the 1999-2000 season's Chanticleer winner for Best Production, *The King of the Kosher Grocers*. He lives in Bolivar with wife, Beth, daughters, Leda and Delaney, and twins born June 4, 2003, Zoe Grace and Griffin Dean.

KEITH D. CAMPBELL (Supervisor Front-of-House & Patron Services) holds a B.A. in English from The University of Akron, where he served as editor of *The Buchtelite* and sang with the Akron Symphony Chorus. During the summers of 1995 and 1996, he interned in the box office at Porthouse Theatre Company. Keith has done post-baccalaureate studies in Arts Administration at The University of Akron. This is his eighth season at WCP.

JOHN COTTER (Business and Public Relations Assistant) has the duties that come with helping Jan and Keith in the Marketing



Professional Staff continued

and Box Office areas. He also serves on Weathervane's Production Board as Co-Chair of Auditions. John is a retiree of 36 years with Ohio Edison and has been a long-time volunteer of the Playhouse serving on the Production Board as its President and Co-Chair of Properties. He has also worked backstage for many productions and has won Chanticleers for Properties Design for four productions, his most recent being co-design of *The Philadelphia Story*. He is, however, most proud of his three grandchildren, Dana, Nicholas and Kristin.

KATHRYN A. KOHL (Assistant Technical Director) holds a degree in Elementary Education from BGSU and a Master of Business Management Degree from Aurora College in Aurora, IL. She began her theater career as a volunteer on many lighting and set construction crews. She served as Properties Designer for *Dracula* and won a Chanticleer for proper-

ties co-design of *The Philadelphia Story*. Kathy also volunteers as Resident Master Carpenter and Master Painter for the Theatre Department at Firestone High School. She lives in West Akron with husband Doug and their three children, Stephanie, Zachary, and Katie.

DREA JEAN L. BROWN (Data Services Manager) holds a Master of Science Degree in Technical Education and a Bachelor of Science Degree in Education from The University of Akron. She was recently promoted to the position of Director of Administration for the Ohio & Erie Canal Corridor Coalition. She is an active member of Delta Sigma Theta Sorority, Inc. Akron Alumnae Chapter. This season she will eagerly welcome a new grandbaby and a new son-in-law. Her major priority for this season is to spoil her grandchildren.

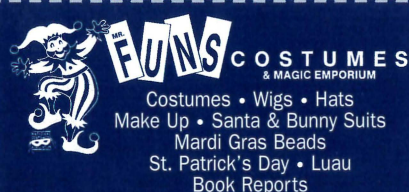
Many Thanks to Our Season Sponsors

Summit County Children Services sponsor for *Charlie & the Chocolate Factory*

County of Summit Alcohol, Drug Addiction & Mental Health Services Board sponsor for *Proof*

Akron Publishing Company - Ad Sales
Minx Design - Graphic Designer
Ohio Arts Council - Season Sponsor

PAX TV 23 - Season Sponsor
Greystone Hall -- Reception Sponsor
The Grotto on Merriman -- Reception Sponsor
SAM'S CLUB -- Reception Sponsor
Tiffany's Bakery - Opening Night cakes
WKSU 89.7 FM - Season Sponsor
WRMR 1420 AM - Radio Sponsor for *My Way*



10% Off your next purchase
thru 09/30/04

3505 Wyoga Lake Rd. Cuyahoga Falls
330-923-3339



Community
Cash Back Program

September 7 - May 15

Bring your Acme register tapes in to John Cotter and we'll receive a 1% return on them. This great program was developed by the Acme stores to help community organizations.



Board of Trustees

Weathervane Community Playhouse is a non-profit 501(c)(3) corporation operated by a board of volunteer trustees representative of the general community. Regular monthly meetings of the Board of Trustees are open.

Officers

George Moxon	President	Jim Horvath	Assistant Treasurer
Richard Worswick	First Vice President	William Glaeser	Secretary
Mary Beth Kluge	Second Vice President	Margaret J. Dietz	Historian
Laura Kerchner	Treasurer	Steven P. Schmidt	Immed. Past Pres.

2003-2004 Trustees

Nancy Ashcom	Michael Davis	Jeffrey Houck	Sheila Motter
Kathy Ashcroft	Rozelle Duncan,	Dr. Amy Lee	Jack Steele
Albert Barnabei	PhD	Karen Lefton	Thomas Stephan
Barbara Baskin	Christopher Esker	Myron Lewis	Elinore Stormer
Clarence F. Carlson	Mary Felter	John Morgan	Mary Warholy
Thelma Coss	Jon Fiume	Doug Mory	Mark A. Zimmerman
Paul Daum, PhD	Roy Hartz		

Advisory Board Members

Mary Adams	W. Scott Emerick	Libby Jacobs	Dr. Susan Speers
Chuck Ayers	Helen Fleming	Eric Jones	Bob Velotta
Bunny Ballance	Jill Forster	Ardith M. Keck	Shari Whitfield
Madeline Bozzelli	Dr. Penelope Frese	Dede Klein	Mary Whitmer
Stanley Brandt	Ian Haberman	Eileen Moushey	Mary Wolfman
Ann Brennan	Richard Harris III	Jim Nilsen	Mel Wolfman
Nancy Cates	Bob Hasman	Jo Ann Oelschlager	Mona Wolfman
Ron Cimini	Marilyn Heagerty	Margo Snider	June Zeno
Frank Comunale			

Production Board

Mark A. Zimmerman -- Chair

Auditions	M.J. Coulson & John Cotter
WOMEN'S BOARD Costume Shop	Sandra Harding
FIRST ENERGY Lighting Dept.	Mark A. Zimmerman
Properties	John Riazzi
Sound	Charles Korecki & Tom C. Barnes
Stage Management	Nikki Rafferty
<i>Ex-Officio:</i>	
Women's Board Representative	Thelma Coss
Producer of Youth/Family Productions	Sean McConaha
Technical Director	Alan Scott Ferrall
Salon Series Coordinators	Tom Abdoo & Suzanne Smith
Play Selection Chair	Beverly Smith
Executive Director	Elynmarie Kazle
House Managers	John Cotter



Our Generous Donors

Weathervane Playhouse gratefully acknowledges the financial support of our corporate, foundation and individual members. Their Membership helps keep admission prices low and helps us to maintain the high standards of production you've come to associate with Weathervane. This list is updated throughout the season.

SUPER FOUNDERS (Gifts of \$10,000+)

City of Akron	Ohio Arts Council
The GAR Foundation	Weathervane Women's Board

FOUNDER'S CIRCLE (Gifts of \$5,000+)

Akron Community Foundation	OMNOVA Solutions Foundation
Ann & Dave Brennan	Charles E. & Mabel M. Ritchie
Bridgestone/Firestone Trust	Memorial Foundation
Eileen & H. Peter Burg	Sisler McFawn Foundation
Mary B. Demetros Foundation	Lloyd L. & Louise K. Smith
John A. McAlonan Fund	Memorial Foundation

PLATINUM MEMBERS (Gifts of \$1,000+)

INDIVIDUALS

Fred & Francia Albrecht	Mr. & Mrs. George Moxon*
Elynmarie Kazle & Mark A. Zimmerman	Thomas R. Trotter & Martha Kaltenbach

CORPORATIONS & FOUNDATIONS

Babcox Publications	Michelson Foundation
Glenn R. & Alice B. Boggess Memorial Foundation	Laura R. & Lucian Q. Moffitt Foundation
Brennan Family Foundation	The RC & Katherine Musson
FirstEnergy Foundation	Charitable Foundation
The Goodyear Tire & Rubber Company	M. G. O'Neil Foundation
C. Blake & Beatrice McDowell Foundation	© TARGET

GOLD MEMBERS (Gifts of \$500 - \$999)

INDIVIDUALS

John Grafton & Richard Worswick*	Dr. & Mrs. Edward Koosed	Steven P. Schmidt, PhD*
Eileen & Ralph Greene	Richard & Leslie Lund	Mary & Mel Wolfman
	David & Orlene Makinson	

CORPORATIONS & FOUNDATIONS

InfoCision Management Corp.	National City Bank
Myers Industries, Inc.	Summit County Internists, Inc.

**Denotes Board of Trustees*



Our Generous Donors continued

SILVER MEMBERS (Gifts of \$250 - \$499)*

INDIVIDUALS

David Ashe	Helen & Chisna Fleming	Samuel I. Levey
Mildred Collis	Barry Friedman	Patricia Obenour
Dr. Paul Daum*	Roy & Mary Hartz*	Barbara B. O'Connor
Margaret J. Dietz*	Jim & Charlotte Horvath	John O'Neill
Dr. Richard & Mary Beth Ellison	Dr. Jack & Libby Jacobs	Dr. Douglas & Jane Sanders
W. Scott & Sandra Emerick	Dr. Amy Lee*	Connie & Bob Velotta

CORPORATIONS & FOUNDATIONS

Air Enterprises	GoJo Industries	Steere Enterprises
Bober, Markey, Fedorovich	Jeter Systems	Welty Building Company
Cedarwood Companies	Maynard Family Foundation	
FW Albrecht Family Foundation	Roetzel & Andress	

PATRON MEMBERS (Gifts of \$150 - \$249)

INDIVIDUALS

Drs. Morton & Miriam Agins	Meg Hopp	Dr. George & Janet Nankervis
Kathleen Ashcroft*	Mrs. Harvey Karam	Dr. Luis & Theresa Proenza
Mr. & Mrs. Lance C. Bergstrom	Laura & Jeff Kerchner*	Sandy & Sam Smith
Vicki & Dave Brockman	William W. & Anne M. Lowery	Thomas Stephan*
Rozelle Duncan, PhD*	Mrs. C. Blake McDowell, Jr.	Judge & Mrs. Harold White
Dr. & Mrs. Stephen A. Farkas	Tina & John Mogen	Marta J. Williger
Dr. Lowell & Francine Gerson	Doug Mory*	Mona Wolfman
Ginny & Jay Hershey		

CORPORATIONS & FOUNDATIONS

Akron Publishing Company	The Davey Tree Expert Co.	Peters, Tschantz & Bandwen
Akron Tool & Die	Flexsys America	The Ruhlin Company
Amer Insurance	GBC Design, Inc.	Smithers Scientific Services
Annaco	Hitchcock Fleming & Assoc.	Yoder Brothers, Inc.
Arther Printing	Kastner, Westman & Wilkins, LLC	
Brockman, Coats, Gedelian	Mogen Real Estate	
ComDoc, Inc.	North Akron Savings	
Database Marketing		

**Denotes Board of Trustees*



Our Generous Donors continued

SUSTAINING MEMBERS (Gifts of \$100-\$149)

INDIVIDUALS

John & Kathy Arther
Doug & Mary Ann Bell
Curt Brown
John & Maryanne Cotter
Jane & John DeYoung
Paul & Ruth Eisenzimmer
Lisa & Ray Farmer
Diana & John Gayer
Ellen & Karl Hay
Marilyn Heagerty
Kathryn M. Hunter

Stacia & Mike Kaschak
Dr. C. William & Ardith M. Keck
Richard & Judy Kotick
Shelley & Thomas Koutnik
Dr. Donald & Wendy MacKay
Martha Mazak
Margaret & John McBride
Mr. & Mrs. Richard D. Miller
Virginia D. Moline
Gloria T. Reich
Jay Sigler

Lois & Paul Simmons
Mr. & Mrs. Edgar Steinmark
Paula & John Troche
Linda Waite
Pat & Leo Weill
Mary K. Whitmer & Stanley Brandt
Libby & Jeff Wilson
B.J. Zeigler
Dan & June Zeno

CORPORATIONS & FOUNDATIONS

Akrochem Corporation

Cohen & Company

CONTRIBUTING MEMBERS (Gifts of \$75 - \$99)

INDIVIDUALS

Carol Boyd
Norma Bucey
Bridget & Steve Dolin
Raleigh & Gloria Drennon
Suzy Elderkin
Carla & John Kachmar

Dr. & Mrs. Lawrence Kaye
Dr. & Mrs. Raymond Kimberly
Jo McGarvey
Arlene McKinnon
The Moushey Family
Dr. Joseph Rapotec

Bertie & Milton Sass
Susan & David Scarponi
Barbara & Russell Stevic
Edith & Norbert Weisend
Linda Wertz &
Robert E. Cunningham

FRIENDS (Non-Voting)

Mr. & Mrs. Gerald A. Colonna
Rebecca DeBolt
Emily Fleisher

George J. Gauthier
General Metals Powder Company
Lynn & Edward Metzger

A.E. & L.C. Wallach
Zuckerman Consulting Group

IN-KIND DONATIONS

The Kormushoff Family

Weathervane Community Playhouse gratefully acknowledges **SBC, Merrill Lynch, The BF Goodrich Company, Key Foundation, The Goodyear Tire & Rubber Company** and **Illinois Tool Works Foundation** for contributions made through matching gifts programs.

Weathervane Community Playhouse gratefully acknowledges **The Sisler McFawn Foundation, Akron Community Foundation, OMNOVA Solutions Foundation** and **Target Stores** for contributions for Project STAGE presentations and Youth Outreach Programs.



Greystone Hall & Catering

A fine dining experience for any event
Opening for lunch October 2003

103 S. High Street

Downtown Akron

330-761-1950

A Memorial Contribution was made to Weathervane Playhouse
in honor of **Vera Washington** by
The Moushey Family

Benny, Duke,
Ella, Frank,
Louis, Bing,
Peggy, Sarah,
Perry
and

Nat King
on the radio 24 hours a day from

1420AM WRMR
cleveland's
classic pops
www.WRMR1420.com



Welcome from the Executive Director

We're going places!



Coming off a very successful theatre season presents our community playhouse with an interesting dilemma. How do we improve upon our success? With the economy woes that have afflicted so many of our brother and sister organizations, how do we continue to improve our service to the greater community while remaining fiscally responsible?

Our Play Selection committee rose to this challenge by choosing a modestly sized season with bold choices. Four plays that we will present to you are premieres, either for Akron or Northeast Ohio. *My Way*, a tribute to Frank Sinatra is a musical that is having its first northeast Ohio run here at the Playhouse. *The Dinner Party*, *A Lesson Before Dying* and *Proof* are all Akron-area premieres. Our Trustees took on this challenge in the re-invention of our traditional fundraiser, choosing things that are fun as well as good for the bottom line.

To strengthen what we are doing with education and outreach, we have chosen family centered initiatives such as *Faithful Fathers/Stage Dads*, new ventures into the play-building arena such as *Mr. Lewis Rules: Stories from the Juvenile Justice System* and added partnerships with the City of Medina and Junior Achievement.

I am very pleased that Martín Céspedes has been able to join in this journey by making his directing and choreographing debut here at the Playhouse with *My Way*.... I applaud the efforts of the entire company and thank them for their time and work on this new show. We have other surprises and other guest artists who will also be joining us as the season progresses.

Coming off of our season of celebration, there is much to crow about. And, if anyone asks, WeatherVane is not staying at home watching the world go by -- we are going places and you are very much encouraged to come along.

Cheers to 2003-2004!

Emmie Kagle

Executive Director

WeatherVane Playhouse

Dynamic Productions, Strong Outreach, Continuing Education



WeatherVane

Community Playhouse

69th Season -- 2003-2004 -- Production # 503

September 10 - October 5, 2003



Compiled by
David Grapes & Todd Olson
Book by Todd Olson



Radio Sponsor

Directed & Choreographed by
Martín Céspedes

Musical Director -- **Margaret Knepper**

Stage Manager
Jill Forster

Properties Designer
John Riaz

Costume Designers
Betty Williams
Dorothy Kies

Sound Engineer
Charles Korecki

Lighting Designer
Erin Katz

Scenic Designer
Alan Scott Ferrall

Original piano/vocal arrangements by Vince di Mura -- Additional arrangements by Stephen Kummer and Donald Jenzcka -- Score conception and interpretive consultant Vince di Mura -- First workshop production presented at Artpark at the Church, Lewiston, NY, May 1999 -- World Premiere at Tennessee Repertory Theatre, Nashville TN July 2000

Special thanks: Barbara Redinger Davis, K. Dawn Grapes, Brant Pope and the FSU/Asolo Theatre Conservatory, John Fredo, Lynne Kurdziel-Formato, Michael Hake, Christine C. Cooper

My Way, a Musical Tribute to Frank Sinatra is produced by special arrangement with Summerwind Productions, 2251 Scott Drive, Franklin, TN 37067.

WeatherVane productions are sponsored in part by



WeatherVane Community Playhouse, 1301 WeatherVane Lane, Akron, OH 44313-5186
Ticket Office: 330-836-2626 -- Fax: 330-873-2150 -- Email: wcpakron@aol.com
www.weathervaneplayhouse.com



About the Play and Playwrights

When Frank Sinatra died on May 14, 1998, his music was heard in retrospectives on radio and television. David Grapes decided he had to develop a theatrical piece about "The Voice." With his collaborator, Todd Olson, he put together a program of ninety of Sinatra favorites from the nearly 1400 songs which the singer recorded. This is not a presentation of Sinatra imitators but rather a joyous gift of sad songs, romantic songs and novelty songs, all firmly entrenched in the memory banks of his listeners. From *All of Me* (first recorded by Sinatra in 1946) to *My Way* (which first appeared in the 1969 album and was one of the singer's most-requested songs), you will find yourself remembering and humming along (in your mind only please!). This program includes Bart Howard's *Fly Me to the Moon*, recorded in 1964 on the album, *It Might as Well Be Swing; I Love Paris*, a Cole Porter number which Sinatra sang in the 1960 film version of *Can-Can*; *I've Got You Under My Skin*, another Cole Porter tune first recorded by Sinatra in 1956, and that wonderful Glenn Miller hit written by Harold Arlen and Johnny Mercer, *That Old Black Magic*, which Sinatra recorded twice, in 1946 and 1961. The goal of this production, according to David Grapes, is to present a musical revue that recalls the essence of the man through the glorious music he sang.

David Grapes, co-creator and original director, is currently Executive Producing Director of the Tennessee Repertory Theatre, Nashville, the largest professional theater company in that state. He worked for three years as Executive Director and Producing Artistic Director for Artpark and Artpark at the Church, a large Equity company located in upstate New York. David is a member of Actors' Equity Association, the Society of Stage Directors & Choreographers, and is a graduate of the MFA Theatre Program at University of North Carolina-Greensburg. David has had extensive experience in academic theater, having served as department chair and master acting teacher at West Virginia University at Parkersburg, WV; at Tarkio College, MO, and at Moorhead State University, MN. David's production of *My Way...* at the Asolo Theatre in Sarasota, FL shattered all previous box office records during its 35 performance sold-out run in May, 2001. David lives with his wife, Dawn, their two children and cat Shakespeare in Williamson County, TN. In his spare time he plays drums for the band, The Funky Cowboys.

Todd Olson, co-creator, author of book and director, is currently Artistic Director for American Stage Company in St. Petersburg, FL. Before that he spent three seasons as the Associate Artistic Director at Tennessee Repertory Theatre in Nashville. He received his MFA from the University of North Carolina and is a graduate of the Institute for Advanced Theatre Training at Harvard. He has taught at Harvard, Vanderbilt and Boston Universities, among others. He has directed more than 100 plays, musicals and operas and is currently writing the book and lyrics for the musical *American Storm: The Great Galveston Hurricane of 1900* with Grammy Award-winning composer Mike Reid. Todd lives in Seminole, FL with wife Charlotte and their children, Jonas and Corinna.



My Way... Cast

Rob Dougherty ✓
Paul Hoffman ✓
Meg Hopp ✓
Ikeya Morning ✓

Note: The cigarettes used in this production are artificial, smokeless and, therefore, non-toxic.

***For your safety, we request that you remain seated until the house lights have come up at intermission and after the curtain call.**

***The use of cameras, recording equipment and laser pointers is forbidden during this performance.**

***As a courtesy to fellow audience members, please make sure that cell phones and pagers are turned off during the performance.**

***Please do not bring food or drink in the auditorium.**

***NOTE: In case of an emergency in which the performance cannot continue, Calamity Vouchers will be issued for a future performance. Thank you.**

Act I

Strangers in the Night Bert Kaempfert, Charles Singleton, Eddie Snyder

Favorites Medley

The Way You Look Tonight Jerome Kern and Dorothy Fields

Sunny Side of the Street D. Fields and J. McHugh

All of Me Gerald Marks and Seymour B. Simons

I've Got the World on a String Harold Arlen and Ted Koehler

High Hopes Sammy Cahn and Seymour B. Simons

Broadway Medley

My Funny Valentine Richard Rodgers and Lorenz Hart

Where or When Richard Rodgers and Lorenz Hart

Let's Face the Music and Dance Irving Berlin

Makin' Whoopee Walter Donaldson and Gus Kahn

It's All Right with Me Cole Porter

I Get a Kick Out of You Cole Porter

Cities Medley

I Love Paris Cole Porter

How About You? Ralph Freed and Burton Lane

My Kind of Town (Chicago Is) Sammy Cahn and Jimmy Van Heusen

South of the Border Michael Carr and James B. Kennedy

Chicago, Chicago Fred Fisher

L.A. Is My Lady Alan Bergman, Marilyn Bergman, Quincy D. Jones and Peggy Lipton

New York, New York John Kander and Fred Ebb

Young Love Medley

My Lean Baby Roy Alford and William May

I Believe Sammy Cahn and Jule Styne

Musical Numbers continued on next page



<i>Let's Get Away from It All</i>	Thomas Montgomery Adair and Matt Dennis
<i>I Only Have Eyes for You</i>	Al Dublin and Harry Warren
Summer Medley	
<i>Something Wonderful Happens in Summer</i>	Joseph Bushkin and John De Vries
<i>Summer Wind</i>	Hans Bradtke, Heinz Meier and John H. Mercer
<i>Indian Summer</i>	Al Dublin and Harry Warren
Love and Marriage Medley (Part I)	
<i>The Tender Trap</i>	Sammy Cahn and Jimmy Van Heusen
<i>Should I Reveal?</i>	Herb Brown Nacio and Arthur Freed
<i>Can I Steal a Little Love?</i>	Phil J. Tuminello
<i>The Same Old Song and Dance</i>	Sammy Cahn, Jimmy Van Heusen and Bobby Worth
<i>You're Cheatin' Yourself</i>	Al Hoffman and Dick Manning
<i>Love and Marriage</i>	Sammy Cahn and Jimmy Van Heusen
<i>The Lady Is a Tramp</i>	Richard Rodgers and Lorenz Hart
Love and Marriage Medley (Part 2)	
<i>That Old Black Magic</i>	Harold Arlen and John H. Mercer
<i>Witchcraft</i>	Cy Coleman and Carolyn Leigh
<i>I've Got You Under My Skin</i>	Cole Porter
<i>All the Way</i>	Sammy Cahn and Jimmy Van Heusen

Intermission

Act II

Losers Medley

<i>Drinkin' Again</i>	John H. Mercer and Doris Tauber
<i>Guess I'll Hang My Tears Out to Dry</i>	Sammy Cahn and Jule Styne
<i>One for My Baby</i>	Harold Arlen and John H. Mercer
<i>It Was a Very Good Year</i>	Ervin Drake
<i>Here's to the Losers</i>	Jack Segal and Robert Wells

Big Flirt Medley

<i>You Go to My Head</i>	Fred J. Coots and Haven Gillespie
<i>Something Stupid</i>	Carson Parks
<i>Nice 'n' Easy</i>	Alan Bergman, Marilyn Bergman and Lew Spence
<i>Young at Heart</i>	Carolyn Leigh and Johnny Richards

Moon Medley

<i>Dindi</i>	Aloysio De Oliveira, Ray Gilbert, and Antonio Carlos Jobim
<i>Wave</i>	Antonio Carlos Jobim
<i>Dream</i>	John H. Mercer
<i>Moonlight Serenade</i>	Glenn Miller and Mitchell Parish
<i>Fly Me to the Moon</i>	Bart Howard

Songs for Survivors

<i>This Is All I Ask</i>	Gordon Jenkins
<i>The Best Is Yet to Come</i>	Cy Coleman and Carolyn Leigh
<i>I'm Gonna Live 'til I Die</i>	Al Hoffman, Walter Kent and Mann Curtis
<i>That's Life</i>	Kelly L. Gordon and Dean K. Thompson
<i>My Way</i>	Paul Anka, Gilles Thibault, Claude Francoia and Jacques Revaux
<i>New York, New York (Reprise)</i>	
<i>I'll Be Seeing You</i>	Sammy Fain and Irving Kahal

All songs used with permission.



Martín Céspedes (Director/Choreographer) making his Weathervane directorial debut, he most recently directed and choreographed *Smokey Joe's Café* at Beck Center. He last appeared in the national tours of *Man of LaMancha* with Jack Jones and Ron Holgate where he completed over 300 performances in the role of Pedro; "Lun Tha" in *The King and I* with Hailey Mills, Marie Osmond and Faith Prince; *South Pacific* with Robert Goulet, and *West Side Story* with Bebe Neuwirth. Martin directed and staged the off-Broadway production of *Scrooge and Marley* and restaged Israel Horovitz's long-running production of *Line* at the 13th Street Repertory Company in New York City. He has danced in the nationally renowned Denver Dance Theater, performed in night clubs, and appeared on NBC TV's *Dance Fever*. His most recent opera credit was the lavish PBS production of *Le Cid* with Plácido Domingo and the Washington Opera live at Kennedy Center, where he served as dance and fight captain. He has also taught theater dance for the School of Cleveland Ballet and performed in over 20 Cleveland Opera productions. He is on hiatus from work on the independent film *Edition Project* and the untitled documentary on the life of Benjamin Matthews filmed in New York City. His next theater projects include *Five Guys Named Moe* and *Joseph and the Amazing Technicolor Dreamcoat*, *Reefer Madness* and *Miss Saigon*.

Margaret Knepper (Musical Director) is a woman of many talents -- an accomplished actress, singer, musician, director and costume designer. She has directed at least ten musical productions at Weathervane including the highly successful *Joseph and the Amazing Technicolor Dreamcoat*. She played on stage in *Sweeney Todd...* and *Fiddler on the Roof*. She is voice and flute instructor at Medina High School where she has directed its last five musicals as well as the school's show choir, The Encore Entertainment Company. Margaret was a music performance major at Baldwin-Wallace Conservatory of Music with additional studies at The University of Akron and The University of Michigan. She has performed with the Cleveland Opera, Berea Summer Theatre, Goodyear Community Theatre, Greenbrier and First Night Akron.



Weathervane Playhouse is handicapped accessible. Ramps are available to the front doors, auditorium and seating.



Assisted-listening devices for the hearing impaired are available at the Ticket Office.



Large-Type program inserts are available at the Ticket Office. These copies are not full playbills but contain information unique to this production. These inserts are photocopied and are available in limited quantity.



American Sign Language interpretations are scheduled for selected Sunday performances.



Ohio Relay System 1-800-750-0750 TDD. Call to have your ticket order placed.



12.30 AM, May 14, 1998

I am sitting on the balcony of my San Francisco hotel room, tired of a grueling eight shows a week at the Golden Gate Theater. I can't sleep, missing home, staring out into the bay, TV on with the sound turned down. Through the glass doors, I catch a glimpse of a montage of clips: Frank Sinatra at the Paramount Theater, crowds of young women standing in line kissing his picture, Frank leaping in the air with Gene Kelly, Frank joking with the Rat Pack, Frank singing alongside everyone from Ella Fitzgerald to Elvis, Frank accepting his Oscar, Frank sitting next to John F. Kennedy at his inaugural ball, Frank dancing with Nancy Reagan and, finally, a frozen still picture of Frank, much older, with mike in hand, and underneath his picture, it reads: Francis Albert Sinatra 1915-1998. Putting the sound up, this from CNN: legendary performer Frank Sinatra has died of a heart attack in Palm Springs, California. Like a thunderbolt, I think of my best friend, Matthew, who loved this man's music like no other. With great effort, I called New York City. How can I say this? "Matt, Frank is gone, man" (pause)"but not the voice!" There was a long silence on the other side...

This past century provided us with great accomplishments, but few as lasting, as encompassing, as this human voice. We all know the story -- son of an immigrant, left for dead at birth, the down-but-not-out singer with ruptured vocal cords who mounted one of the greatest comebacks since Seabiscuit. Duke Ellington once said, "Sinatra was the ultimate theater." I say he was the ultimate story teller. Dean Martin said, "It's Frank's world, we just live in it!" Armed with nothing more than a drink in one hand, a song in the other, "so set 'em up, Joe, I've got a little story I think you should know." Voice tight as a fist, opening at the end of a bar. Like life, Sinatra didn't ride the beat of the music safely -- he rode around it, playing with it, splitting it -- musical geometry. Like Miles Davis, putting English on it and hitting it off the rail with great velocity into the corner pocket, sometimes so far behind the beat you would wonder if he would make it, yet before his cigarette ashes would hit the floor he would arrive, dressed, polished, with creases so sharp they could cut diamonds, and pathos neatly folded like a linen handkerchief in his breast pocket. This is the conundrum of Frank Sinatra -- left and right brain hardly talking, boxer and painter, first rate actor, first take actor, brash crooner, lion in winter, lover and father, troubleshooter and troublemaker, band man and loner, the singer that makes men poets, the champ who would rather show you his scars than his medals, the chairman of attitude. *My Way...* is not only a tribute to Sinatra, but to the composers that were lucky enough to have their words recorded by Sinatra. Just imagine the dusty trunks of music never given that chance. In the vernacular of the American musical scene, Sinatra endured the ever-changing musical trends and styles by following his maxim "sing good songs." From *I'll Never Smile Again* to *New York, New York*, to the duet albums with current pop divas, he was the "big bang of popular music," singing the soundtrack of our lives. Frank Sinatra felt most comfortable around a piano bar at 2:00 AM, away from the trappings of the stage, leaning against a piano, hat angled skyward, lighting another cigarette, lighting another song. If *My Way...* can let you into this world, Frank's world, then simply get a drink, sit back and enjoy.

For Matthew, Happy Birthday.

Martín Céspedes, Director/Choreographer



ROB DOUGHERTY (Man 2) returns to Weathervane's stage after several years' absence. He played Cliff in our 1999 production of *Cabaret* and was Prince Charming in the Youth Theater's 1998 production of *Cinderella*. Most recently he played John Adams in *1776* at the Brunswick ACT (2003) and was the baker in *Into the Woods* for Medina Community Theater in 2002. That same year he played Aladdin in Sign Stage's touring production of the same name. He played Sparky in Stow Players' *Forever Plaid* in 2001. He might be your server if you go to Romano's Macaroni Grill for a meal. He studied at the Piero Dusa acting conservatory in Santa Monica, CA.

PAUL HOFFMAN (Man 1) is pleased to be a part of this cast performing great songs recorded by Frank Sinatra. No stranger to cabarets, Paul spent two years touring with Winged Victory Singers, performing nightly in showrooms in the Catskills, Atlantic City and Miami Beach. Recently he was seen in Cain Park's *Fiddler on the Roof* and Beck Center's *La Cage Aux Folles*. Favorite roles include Cowboy Wrangler in *Will Rogers Follies*, Mitch in *Nite Club Confidential*, Max in *June Moon* and Rooster in *Annie*. He is a graduate of Cuyahoga Falls High School and studied theater at Chapman University, in California. He now lives in Cleveland.

MEG HOPP (Woman 1) played Martha Brewster in this year's Weathervane production of *Arsenic and Old Lace*. It's a character she knows well, having played Martha for the Brecksville Theatre on the Square in 1999. She previously appeared on our stage as Sylvie in *The Odd Couple, Female Version*. She also participated in Weathervane's patriotic musical review for the 2001 First Night events. Her favorite role is that of Miss Hannigan in *Annie* for Brecksville Theatre in the Square. She also enjoyed playing Carrie Pipperidge in *Carousel* and Mme. Ernestine von Liededick in *Little Mary Sunshine*. Meg has a Bachelor of Arts degree from St. Norbert College, DePere, WI. She and her husband Steve have three children, Bridget, Libby and A.J., and a cocker spaniel named Maggie.

IKEYA MORNING (Woman 2) is a graduate of the American Musical and Dramatic Academy of New York City, presently living in Cleveland Heights. She has been involved in numerous musicals. Some of her favorites are *Godspell*, *Lucky Stiff*, and *Ain't Misbehavin'* for which she completed the national tour this past December. She sends "muchos" love and thanks to Mother, Granddaddy and Beanes! "Look, Ya'll, I'm dancin'!"

Psst...

Did you purchase single-tickets for this performance of *My Way*...

Are you a Weathervane subscriber yet?

No?!!

Did you know that you can turn in your ticket for this performance at the box office and receive it's cost off a subscription for the remaining shows in the 2003-2004 season?

That's right! What a deal!

Are you on your way to the Box Office yet? Time's running out! What are you waiting for?



Backstage Callboard

JILL FORSTER (Stage Manager) is a second generation Weathervaner with thirty years of active involvement at the Playhouse. She follows in the footsteps of her mother, Jan Michael, pianist and musical director for many years. Jill's talents lie backstage and she has won three Chanticleer Awards for lighting design. She has also kept track of finances for the early Youth Theater Program and later for the Women's Board. Jill is Director of Specialty Courts for the Akron Municipal Court and has a devoted and supportive husband, Jim. She holds degrees from The University of Akron in sociology and criminal justice. Jill dedicated her work on this production to the memory of her brother-in-law, W. Scot Sexton.

BETTY WILLIAMS (Costume Co-Design) has been a Weathervane volunteer for twenty-five years, including presidency of the Women's Board. She's also taken charge of the annual Piper Puppet Show scheduled for spring. Her most indelible mark has been on the Costume Department where she has been building costumes for so many shows that there simply isn't room to list them all. The new areas for costuming in the recent construction and the installation of the elevator have made sewing so much easier for Betty and her cohorts. Betty serves on many committees and can always be counted on to bring her special foods to any gathering.

DOROTHY KIES (Costume Co-Design) got involved in costuming when Betty Williams needed assistance and has a long list of credits for shows such as *The All Night Strut*, *Brighton Beach Memoirs*, *Broadway Bound* and *Driving Miss Daisy*. She won a Chanticleer for costume design for *All the Way Home*. *Little Shop of Horrors* was her last collaboration with Betty, but that doesn't mean she has

stopped costuming! Dorothy has seven daughters and 16 grandchildren. She learned cake decorating when her second daughter was married and she continues to turn out fabulous cakes whenever the occasion demands.

ERIN KATZ (Lighting Design) became interested in technical theater while a student at Copley High School. She was co-lighting designer for the Youth/Family production of *Charlotte's Web* and worked backstage on *Stuart Little* and *Joseph and the Amazing Technicolor Dreamcoat*. She has also provided lighting assistance for *The Chosen*, *The Sunshine Boys* and *...Forum*. She was the winner of a Youth Recognition Award for her contributions to the Playhouse at a recent Chanticleer dinner. Erin begins her third year at The Ohio State University this fall where she is majoring in Hebrew and theater.

CHARLES J. KORECKI (Sound Design) designed lighting for Weathervane's *The King of the Kosher Grocers*, *As Bees in Honey Drown*, and *The Wiz*, as well as last season's production of *Joseph....* He was on stage in the role of Audrey in *Little Shop of Horrors*. A graduate of Albion College, he is auditorium manager at Cuyahoga Falls High School.

JOHN RIAZI (Properties Design) likes to keep track of things. He did properties design for *The Laramie Project* last season. Professionally, he is a Kent State University graduate in Zoology and Chemistry and is director of New Product Development for Hygenic Corporation. He holds eight U.S. and foreign patents. His interest in theater also extends to Riverwalk Playhouse where he is a board member. John and Linda, his partner in love and crime, have three children.



Production Team Members & Crews

Alan Scott Ferrall -- Technical Director

Kathy Kohl -- Assistant Technical Director

SET CONSTRUCTION

✓ Ruth Richardson Tom Marshall ✓
✓ Kevin Ford Donne Clark ✓
✓ Spencer Burke John Keller ✓
✓ Lee Lechner

SOUND CREW

Maureen Burns *not in database*
Dan Jankura ✓
Tom C. Barnes ✓

COSTUMES

Henrietta Cook ✓ Connie Velotta ✓

PROPERTIES

Linda Riazzi ✓ Jan Michael ✓

LIGHTS

Steve Lawson ✓ Patrick Simone ✓ David Ruggles *not in database*
Leah Sass ✓ Barbara Trotter ✓ Danielle Rusen
Becca Carter ✓

ORCHESTRA

Margaret Knepper Piano ✓
David Spondike Bass *not in database*
Scot M. Sexton Percussion ✓

We miss you W. Scot...

ACKNOWLEDGMENTS

Dominos Pizza

Ohio Tuxedo

Ann Arcuri

Thanks to Our Volunteers

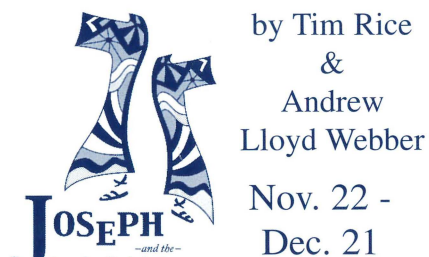
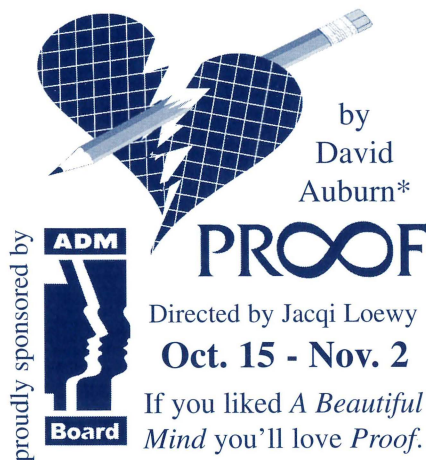
The following are the vivacious volunteers who assisted you by hostessing, house managing and staffing the boutique, office or Green Room during *Gypsy* and *Charlie and the Chocolate Factory*.

Peru Agrawal	Sally Duddey	Amanda Montigney	Sue Steiner
Claire Allen	Amorya Farrier-Cain	Karen Morrow	Barbara Stevic
Linda Avers	Helen & Cue Fleming	Eileen Moushey	Evelyn Stiggers
Nora Barner	Virginia Fleming	Marisue Murphy	Jacqui Sukie
Patrice Bechtol	Jill Forster	Lois Murray	Helen Tschantz
Kim Biats	Michele Hartley	Pat Obenour	Lynn Vanca
Joyce Bigham	Marilyn Heagerty	Barbara O'Connor	Connie Velotta
Desiree Boldon	Linda Heath	Jean Questel	Linda Waite
Betty Borom	Diane Herman	Liz Raines	Ronda Warren
Sally Brown	Frances Howell	Joanne Reed	Betty Watterson
Janet Budai	Kim Jameyson	Ruth Richardson	Pat Weill
Tammy & Stephen Carder	Deb Kabacinski	Randie Sass	Betty Williams
Alberta Carlin	Patty Keith	Marla Scarpitti	Marta Williger
Juanita Carlson	Liz Kerns	Leslie Schafer	Mary & Mel Wolfman
Debbie Civerella	Sharon Kirby	Kathleen Schindler	Desserie Woodall
Henrietta Cook	Diane & Joe Korpics	Christine Stewart	Gen Woods
Wendy Cooley	Fran Lasser	Lois Simmons	Richard Worswick
John Cotter	Mary & Daniel Leeson	Suzanne Smith	B.J. Zeigler
Thelma Coss	Kats Jakes Lopp	Ethel Soudry	
M.J. Coulson	Leslie & Richard Lund	Susan Speers	
Margaret Dietz	Claudena Miller	Diana Stark	



Marci Paolucci, gallery exhibit chairman, has gathered Sinatra memorabilia from a number of area collectors to present this splendid exhibition. **Denny Coyle**, Akron musician, vocalist, recording artist and actor, has provided LP record jackets from his personal collection. **Roger W. Durbin**, Ph.D., Associate Dean and Professor of Bibliography of the University Libraries of The University of Akron has provided some photographs from internet sources and an original piece of sheet music. The **General Store Annex**, located in Quaker Square, is lending a selection of reproductions of Frank Sinatra movie posters and some framed photographs of Sinatra that usually adorn their walls. The posters can be purchased from the store for \$12.00 apiece. **Amanda Montigney** attended the last Sinatra concert at the Richfield Coliseum and shares her program and a T-shirt (which you will find on the bust of Shakespeare in the lobby.) **Larry Patch**, northeastern Ohio vocalist and musician who is well-known for his Sinatra-style renditions of the "Old Blue Eyes" songbook, is lending album covers and other memorabilia from his collection. Mr. Patch is the business manager of the Cleveland Jazz Orchestra and has performed in concert with them. He has also performed at the Tri-C Jazz Fest with famous jazz musicians.

Next On Our Schedule



Back by popular demand!
This energetic show is great for your family holiday outing.
Bring the whole gang!

*Weathervane presents the **Akron premiere** of *Proof*, the Pulitzer Prize and Tony Award winner in 2001. The play deals with the mystery of who solved a once insoluble mathematical problem. But the real crux of the play deals with the interplay between a genius father who goes mad before he dies and his daughter who has inherited his abilities and fears she may also have inherited his madness. *Proof* is of interest to northeastern Ohioans because of its author, **David Auburn**, who is grandson of the late Dr. Norman P. Auburn, former president of The University of Akron, and son of Drs. Mark and Sandy Auburn. Mark is Dean of Fine and Applied Arts at the University.



Sun., Sept. 14 @ 7:00 p.m. (lobby)
Mr. Lewis Rules: Stories from the Juvenile Justice System*

Written & Directed by Jacqi Loewy
from the stories of Myron Lewis

October 15 - November 2, 2003
Proof by David Auburn, Directed by
Jacqi Loewy
Mainstage production

October 25 at 10:30 p.m.
October 26 at 7:30 p.m.

Kate Loitz -- new Cabaret show

Weekend of Nov. 7 - 9
Faithful Fathers/Stage Dads
Call Ed. Dept. at 330-836-2626 X 17

Fall Youth Class Session
10-week session Sept. 20 - Nov. 22

*Sundays at Seven: Salon Play Readings are held in Weathervane's lobby at 7 p.m. on selected Sundays with light refreshments and discussions following presentations. Free of charge. All welcome.

Weathervane Playhouse Staff

Elynmarie Kazle
Executive Director
Keith D. Campbell
Supervisor, Front-of-House
& Patron Relations
Alan Scott Ferrall
Scenic Designer/Technical Director
Janis L. Harcar
Director of Marketing & Development
Sean McConaha
Dir. of Ed./Producer Youth Prod.
John A. Cotter
Business & Public Relations Assistant
Kathy Kohl
Assistant Technical Director
Caroline Kline
Bookkeeper
Dreajean L. Brown
Data Services Manager

Firestone Theatre
2003-2004 Season

Just Passing Thru
*An Original Dance Play
based on a concept by
Miller Horns
directed by Reva Golden
choreography by Karen Sly*
October 2 - 4, 2003, 7:30 p.m.

A Servant of Two Masters
*a comedy for the ages
by Carlo Goldoni*
December 4 - 6, 2003, 7:30 p.m.

Evita
*music by Andrew Lloyd Webber
Lyrics by Tim Rice*
March 4 - 6, 2004, 7:30 p.m.

Firestone High School
333 Rampart Avenue, Akron
(330) 873-3408

**MAGICAL
THEATRE COMPANY**

Professional Theatre for Young Audiences & Families

2003-2004



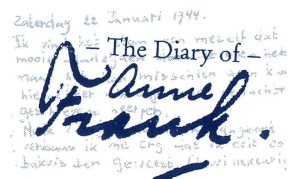
Bunnacula

Oct. 17 - 26, 2003



The
**VELVETEEN
RABBIT**

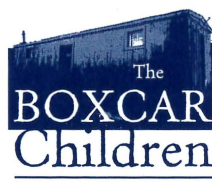
Nov. 28 - Dec. 19, 2003



The Diary of
Anne Frank

Jan. 30 - Feb. 1, 2004

Sponsored in part by Bridgestone/Firestone Trust Fund



The
**BOXCAR
Children**

May 7 - 16, 2004

330/848-3708

565 W Tuscarawas Ave • Downtown Barberton



Coach House Theatre

Akron's 1st Theatre

Crimes of the Heart

by Beth Henley

September 4 - 20, 2003

barefoot in the park

by Neil Simon

November 13 - 29, 2003

A Christmas Carol

by Charles Dickens

Adapted by Mark Dawodzoal

December 13 - 21, 2003

ART

by Yasmina Reza

Translated by Christopher Hampton

February 12 - 28, 2004

ten little indians

by Agatha Christie

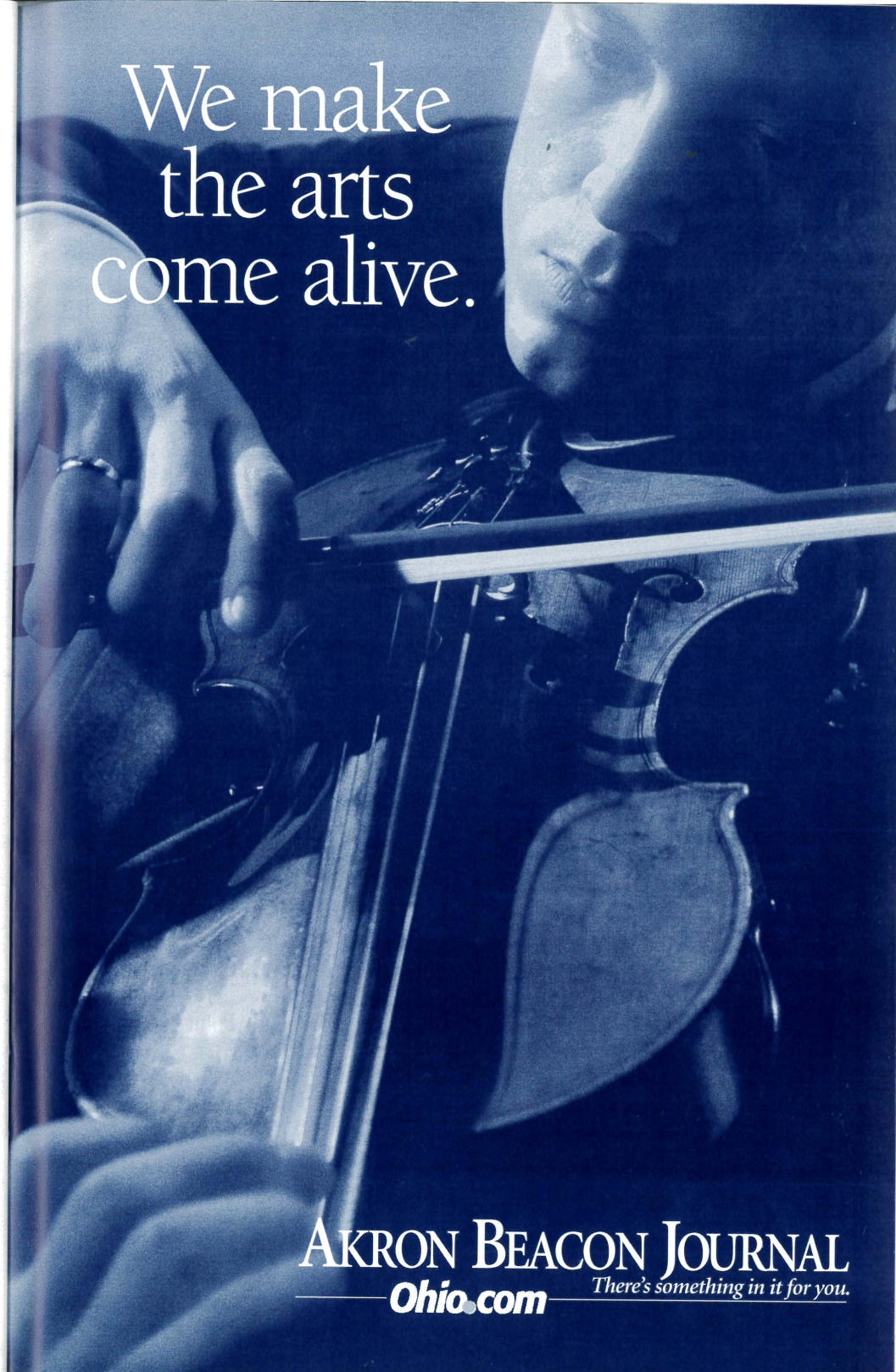
May 6 - 29, 2004

*Join us this season at Coach House
as we share our passion -- without
you, it's just a rehearsal!*

Jim Fippin

Resident Director

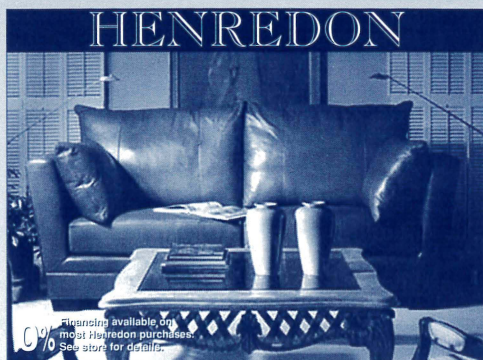
We make
the arts
come alive.



AKRON BEACON JOURNAL
Ohio.com *There's something in it for you.*



The Best Place For Fine Furniture in Greater Akron is at Wayside



- Over 200,000 sq. ft. of inventory.
- Providing friendly, responsive service for over 66 years.
- Professional interior designers on staff.
- We buy and sell for less ... every day.

Fine pieces from these quality manufacturers on display:

Kincaid • Pennsylvania House
Stanley • Lexington • Nautica
Lane • Smith Brothers • Flexsteel
Bob Timberlake • Cochrane
Serta • Broyhill • Clayton Marcus
Canadel • Howard Miller • Hooker
Sumter • Crescent • Dozens More

Visit our newly-opened 10,000 square-foot addition!

Wayside
furniture

"Where You'll Find Better Furniture Priced Lower"

1367 Canton Road Akron On Route 91,
just 1/4 mile south of Route 224
Shop Daily 10 to 9, Saturday 10 to 6, Sunday 1 to 6
Visit our website: www.wayside-furniture.com

330-733-6221
Toll Free 877-499-3968

Stinaff's
DATA FORMS & SYSTEMS SINCE 1935



We're a great cast
of performers
in meeting your
full color printing and
business form needs!

44 S. Summit St. • Akron, OH 44308
330-434-2106 • Fax 330-434-9376

SPOTLIGHTS

Your Ticket To ENTERTAINMENT

WEST SIDE
Leader

Reaching 43,600 homes
and businesses in one
of America's best
demographic markets.

GREEN
Leader

Reaching over
10,000 homes and
businesses
in the city of Green.

3075 Smith Road Suite 204 • Akron, OH 44333
(330) 665-9595 • Fax: (330) 665-9590

Graf
Growers
Garden Center • Farm Market

1015 White Pond Dr. Akron
330.836.2727
grafgrowers.com

Bring this ad to
Graf Growers & receive
\$5 off \$25
reg. price plant purchase
through 8/31/04

Be Anybody.

Our Lady of the Elms

A Dominican Education for Girls.

Open House

Sun, Sept 14: 1-3 p.m.
Wed, Oct 8: 6-8 p.m.
Sun, Nov 2: 1-3 p.m.
Wed, Mar 31: 6-8 p.m.



For more information, please contact
the Office of Admissions at:

1220 W. Market St.
Akron, Ohio 44313-7108
(330) 867-0918
www.ourladyoftheelms.org

Start Here.



Entertain Your Palette

Specialty foods and wines

Mrs. Ticklemore's Tea Room

Beside the Point Café

Movable Feast box lunches & dinners

Catering

Gift baskets for all occasions

WEST POINT MARKET

1711 West Market St., Akron OH 44313
330-864-2151 / 800-838-2156
Mon-Sat 8am-7pm / Sunday 10am-5pm
www.westpointmarket.com



PAPAJOE'S

Sacchini's
SINCE 1932

Dinner before or after the show.

Minutes from

WeatherVane Playhouse
Restaurant - Deli - Wine Shoppe
Banquets - Catering

1561 Akron-Peninsula Road
(330) 923-7999

THE
Grotto
ON MERRIMAN

Seafood & Steaks
at casual
dining prices.

1841 Merriman Rd.
Akron, OH 44313

330.869.4981



**Membership
Warehouse**
FOR BUSINESS & HOME

A SAM'S CLUB Membership gives you access to:

Huge Savings
Brand-name Merchandise
Great member Benefits

3750 "J" West Market St.
Fairlawn, Ohio 44333

Marketing 330-665-5337
Main 330-665-5336
Fax 330-665-5430

*Weathervane Playhouse
thanks
Tiffany Bakery
for the beautiful opening
night cakes.*

Tiffany's Bakery
Elegant Selections



*Wedding Cakes Our Specialty
All Occasion Cakes*

330-753-0017
2176 Romig Road
Akron, OH 44320

GREGG LAUCK

800.795.1366
Fax 330.342.4826



**THE
GREENHOUSE
FLORIST**



Mon. - Fri. 9-5
Sat. - 9-3



ORCHARD PLAZA * 5825 DARROW RD * HUDSON, OH 44236

**Don Drumm
Studios & Gallery**

It all comes together here.

437 Crouse Street, Akron, OH 44313
330.253.6268
M-F: 10-6, S:10-5

graphics, glass, jewelry, sculpture, photography, ceramic



Volunteering at Weathervane

Weathervane began as a volunteer organization and continues its growth thanks to the time and talent that members of our community invest in it. Our on-stage performers have worked long and hard to earn your applause. But their work is supported by many other unseen men and women who've helped build and paint sets, run the lights and sound, make sure that properties and set dressing items are in their proper places and do other backstage labor from stage managing to costuming and make-up. Supporting those who are actively involved in putting on each show are still more volunteers who usher, house manage, sell tickets, keep our office running and serve on our Board of Trustees, Board committees, Production Board and Women's Board.

Their spirit is the backbone of our continuing operations, a valued support on which our professional staff relies.

Each month, we acknowledge the outstanding Volunteers of the Month in our lobby, but those volunteers represent all who commit their time and interest to create a great theater experience for everyone who's come to see this show.

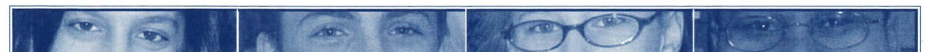
If you have friends or relatives who volunteer generously at Weathervane, we hope you'll take a moment to thank them for their help and their support of the cultural enrichment of our community. Better yet, join them! Call us and we'll help you win your own share of the applause for a "jolly good show," an experience that offers unique challenges with every performance.

Share the Annual Chanticleer Celebration

Shortly after the final production of each season, Weathervane volunteers and friends share an exciting party to acknowledge outstanding performances by performers and technical volunteers. The top performers are awarded rooster statuettes—Chanticleers—in recognition of their work, as voted by Chanticleer "judges." It's a great night to get together, share hopes, fun and festivities and is open to all.

Awards are presented for outstanding lead performances by a male or female

in a drama or comedy, outstanding support performances, and outstanding lead and support in a musical as well as choices in technical achievement. Chanticleers are also awarded for Properties, Lights, Costumes and Sound Design, plus Best Production of the season. In addition to performance and production awards, the event also recognizes the Top 25 outstanding volunteers of the season. We welcome you to take part in the biggest nail-biting party of the year.



Different stories. Proven approach. Real success. Lawrence School.

Northeast Ohio's leader in learning disabilities education since 1969!

1551 East Wallings Road • Broadview Hts. • 440-526-0717 • www.lawrenceschool.org

MALONE

CHALLENGING
CONTEMPORARY
CHRISTIAN

God has blessed us with great powers of expression, and Malone College wants you to appreciate the energy such expression generates. At Malone you can immerse yourself in the arts—just dive in! There are a wide variety of opportunities in the visual arts, music, and theatre, both on and off campus.

Looking for an “arts experience” at Malone?

You don't have to look far: Chancel Players, Chapel Band, Chorale, Concert Band, Instrumental Ensembles, Jazz Band, Marching Band, MC Comedy, Mime Team Ministry, Mural Projects, Outreach Music & Drama, Theatre Productions, Vocal Ensembles, Women's Concert Choir, and the list goes on...

MALONE
COLLEGE
CHRIST'S KINGDOM FIRST

www.malone.edu

Why is this man smiling?



Because his customers are too.

If you haven't been smiling lately, please call Akron Publishing Company for your next custom publishing project. We will produce brochures, magazines, catalogs, directories, books and more... all of them from concept to completion. Akron Publishing Company will be the only call you'll need to make.

AKRON
PUBLISHING COMPANY

phone: 330.929.2703 ▲ fax: 330.923.0856

e-mail: akronpublishing@neo.rr.com

We do really good work, so that you'll look really good.



Volunteer Opportunities

Complete and detach this form and return it to the Ticket Office or mail to:
Volunteer Opportunities, 1301 Weathervane Lane, Akron, OH 44313-5186

NAME _____

ADDRESS _____

CITY _____ ZIP _____ PHONE _____

I am interested in the following areas: (Check as many as you wish)

_____ Acting	_____ Costuming	_____ Fund Raising
_____ Set Building	_____ Orchestra	_____ Box Office
_____ Painting	_____ Sound	_____ House Managing
_____ Usher	_____ Lighting	_____ Play Reading/Selection
_____ Backstage Crew	_____ Classes	_____ Board Membership

_____ Other _____

_____ Best time to reach me at the above phone number _____

_____ I am a subscriber. _____ I am a donor.

I HAVE AN OPINION...

About tonight's play _____

About the current season _____

About future seasons _____

I have a fund-raising idea. _____

We appreciate, and often respond to, opinions offered about our work. Be sure to fill in your name and address above if you wish a response or would like to be contacted.



Volunteer Responsibilities

Here's a quick introduction to the responsibilities volunteers undertake to make our shows work. If you'd like to try your hand at any of these jobs, please call us. We'll help you learn! Volunteers with 100 hours or more of service are eligible for a special Weathervane membership!

*** Stage Management** - Duties include assisting the director throughout the rehearsal period, calling cues, keeping backstage safe and orderly, and coordinating the technical needs of the show with the actors. A great opportunity for those who enjoy planning, communicating and taking charge. Once the director's work is done, it's the Stage Manager who runs each performance.

*** Set Construction** Use your building skills, carpentry or painting techniques to help make illusion come to life. Help is needed days and evenings.

*** Costumes** Designers and workers are vital. We invite skilled and unskilled seamstresses to make or alter costumes, create patterns, care for costumes during a show and keep our wardrobe department organized.

*** Lighting** Experience is a plus, but you can learn by assisting others who know computers and electrical requirements. We'll train eager volunteers to help hang, focus, and add color to lighting instruments. We'll also teach you how to run the light board and follow spots. *Nobody can see the show without you.*

*** Sound** Create the music and sound effects tapes that enrich the aural envi-

ronment for each show or add "live" backstage sound. Run the sound system for technical rehearsals and productions.

*** Properties** All the items that help "dress" a set and all those used by actors in rehearsal and performance (from tea sandwiches to "deadly" weapons and "shattering" windowpanes) must be borrowed, built or cooked. Many volunteers are needed to work on each performance.

*** Office Volunteer** If you enjoy dealing with the public, we can use your help during office hours and on show nights to assist in taking money and answering the phone to take reservations. You may also help with mailings, work with staff, and greet customers and visitors.

*** Ushering** Welcome audience members with your smile, show them to their seats, pass out programs, and serve refreshments at intermission. Your help is always welcome.

*** House Manager** This representative greets the audience, tears tickets and guides theater-goers to ushers for seating. You'll work with the stage manager to coordinate the timing of intermissions and remain in the lobby throughout the show to handle any emergency.

Weathervane Community Playhouse

is a proud member of



Ohio
Community
Theatre
Association



Luigi's
 "An Akron Tradition
 Since 1949"

- Award Winning Food
- Casual Dining
- Old World Elegance

Featuring Our Famous
 Homemade

- Pizza
- Lasagna
- Antipasto

OPEN 7 DAYS
 105 N. MAIN ST.
 330-253-2999



*A healthy
 child is
 music to
 our ears.*



Akron
Children's
 Hospital

Feels Like Family

One Perkins Square
 Akron, Ohio 44308-1062
 (330) 543-1000
www.akronchildrens.org

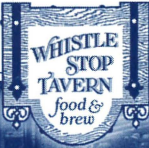


Ab Great
 Night Out
 Deserves
 A Good
 Ending...
 Stop at the
 Whistle Stop
 Tavern

Located in Quaker Square
 Downtown Akron
 330.253.5970

Featuring great
 food & drinks

Experience our wine list
 Visit our new and
 unique shops



The **CUTLER**
 Family of Companies
Under One Roof...



CUTLER/GMAC Real Estate,
 Akron/Canton's real estate leader, is a
 diversified one-stop, total homeownership
 company. Whether you are looking for
 a new home or preparing to sell one, we
 can make your dreams a reality, with the
 convenience of a real estate, mortgage
 and title company under one roof.

CUTLER  **Real Estate**

TITLE
 ONE
 AGENCY

MORTGAGE **1** ONE

www.cutlergmac.com

Allows You Time To Enjoy What's Really Important.

Kindermusik®
 a good beginning
 never ends

Singing, Movement & Instrument Play,
 Ages infant - 7

Daniel's Music Studio

BATH • RICHFIELD • FAIRLAWN
 (330) 659-3173

www.kindermusikneohio.com

Kindermusik® with Miss Terri
 & Friends

STOW RETAIL PARK • 4962 DARROW RD.

Also visit our DrumPlay Store or have
 your Birthday Party with us!

(330) 655-8499 • (877) 650-8320

www.kindermusikwithmissterri.com

FIVE *At* FIVE

CONCERTS OF UNIVERSAL INSPIRATION
ON SUNDAY AFTERNOONS AT 5 O'CLOCK

SEPTEMBER 21, 2003

THOMAS HEYWOOD

AUSTRALIAN ORGAN VIRTUOSO

OCTOBER 19, 2003

FAURÉ REQUIEM & ORGAN SOLOS

WESTMINSTER CHOIR, FIRESTONE SYMPHONIC CHOIR,
CHAMBER ORCHESTRA AND ORGAN

DECEMBER 7, 2003

AM AHL AND THE NIGHT VISITORS

A FULLY STAGED CHRISTMAS CLASSIC

FEBRUARY 29, 2004

OHIO STATE UNIVERSITY MEN'S GLEE CLUB

A SPECTACULAR 90 VOICE MEN'S CHORUS

MAY 9, 2004

HITS FROM THE OPERATIC & BROADWAY STAGE

PERFORMED IN WRIGHT-HERBERICH HALL

WESTMINSTER PRESBYTERIAN CHURCH
1250 WEST EXCHANGE STREET, AKRON, OHIO
330.836.2226

Beware of the Dreaded No-Show

Have you ever seen empty seats at a *sold out* sporting event or concert? Weathervane has the same problem. Single-ticket buyers and subscribers who may have exchanged from another performance wonder why they weren't given those prime empty seats for the evening.

When you buy a subscription, you are *promising* to come to the theater for that ticketed performance and we hold your seat(s). These subscription seats are held until intermission. This, additionally, makes it impossible to tell if a performance is ever really *sold out* and annoys ticket buyers who see that they could have been seated in a better spot.

Subscribers: Please call the Ticket Office at 836-2626 if you will not make your ticketed performance. Thanks.

Weathervane Traditions

Meet the cast Many cast members spend a few minutes in the lobby area to meet and greet friends after performances. It's your chance to thank them for their performance.

Intermission Tea is served with our compliments by our volunteers. Soft drinks are available at a nominal cost.

Opening Night Receptions welcome audiences on first Friday performances. We provide light snacks and refreshments after the show so you can share in the celebration.

For your sweet tooth snacks are available for purchase before the show and during intermission. Refresh-ments (other than water) are not permitted in the auditorium.



Who Gets On Stage?

Our volunteer performers come from throughout greater Akron and Northeastern Ohio. They've committed themselves to four or more weeks of rehearsals plus performances. Their greatest reward is your applause.

Many performers come with substantial theatrical experience. Others are new to the stage. Auditions are open to all and our non-traditional casting policy opens the way for many performance opportunities. Except in cases where race, gender, age or disability is essential to the play, all roles are cast on the basis of talent.

Local newspapers carry audition dates and times or call Weathervane at 330-836-2626 to be added to the audition mailing list. Some directors prefer to set appointments for audition times and may ask that you come prepared with a brief

monologue, improvisational subject or musical number. Copies of plays scheduled or audition scenes are often available for a nominal deposit.


When you arrive at the theater on audition nights, you'll learn about the rehearsal and performance schedule. You may also register as a production volunteer if you're interested in learning about the technical opportunities in the show.

You may be asked to return for callbacks and will be notified of the director's cast selection as soon as possible. Please note that if you don't win the role you've wanted so badly, it may not necessarily reflect on your talent. The director's choice of cast members must take many factors into account to develop the proper "relationships," style and reality of the ensemble. Don't be discouraged.

What If... every doctor knew as much
about caring as curing?

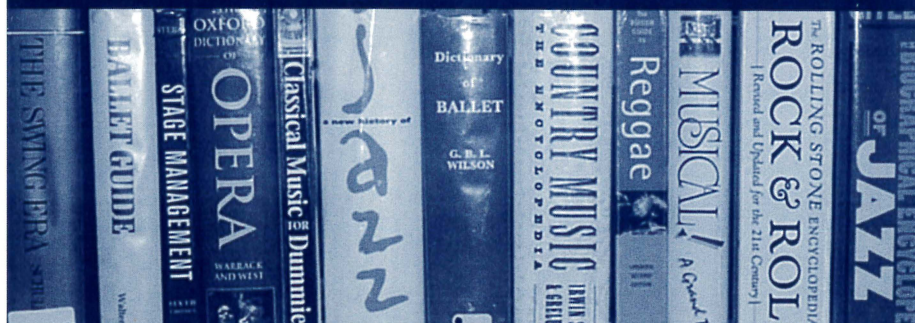
At NEOUCOM, we teach
not only the *science* of
medicine, but also the
art of healing.

What If... everyone had a
NEOUCOM doctor?

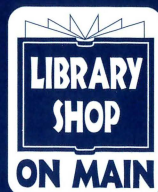
 **NEOUCOM**
NORTHEASTERN OHIO UNIVERSITIES
COLLEGE OF MEDICINE
www.neoucom.edu

NEOUCOM is an equal opportunity employer and educator.

Top-shelf arts and culture (Within easy reach)



**Akron-Summit County
Public Library**
Main Library, Mobile Services
and 17 branches located
throughout Summit County
330-643-9000
www.ascpl.lib.oh.us



Your source for novel gifts
and gently used books
Operated by the
Friends of Main Library
1040 E. Tallmadge Ave.,
Akron 330-643-9070
www.lsom.org



Hiram College

Intimate Learning. Global Reach.

Experience our distinctive curriculum. Hiram has two different learning formats for students—for young adults, the **traditional college** offers our renowned academic program in a residential environment; for adult learners, the **Weekend College** lets students earn their degrees with minimal interference in work/family responsibilities.

Call 1.800.362.5280 or visit www.hiram.edu.
For information on the Weekend College
program, please call 330.569.5161.



Fun and Free
for the Whole Family!

2003-2004 Exhibitions

**Hans Hofmann: Selections from the
Berkeley Art Museum Collection**
September 20, 2003 – January 3, 2004

**Akron
Art
Museum**

70 East Market Street
Akron, Ohio 44308-2084
330.376.9185
www.akronartmuseum.org

Jim Dine Prints: 1985-2000
January 17 – March 27, 2004

The arts
start here.



Art starts with inspiration.
Inspiration starts with new experiences.
New experiences are our business.
That's the Akron Advantage.

www.uakron.edu



"At The University of Akron, we have set the stage for world-class excellence in the arts. By developing new generations of artists, partnering with arts organizations, and providing local venues for internationally-acclaimed theatrical and musical productions, we continue to help define the social and cultural landscape of Northern Ohio."

- Luis M. Proenza
President, The University of Akron

The
University
of Akron

The University of Akron is an Equal Education and Employment Institution