

*Listen to  
your dreams.*

Valley Savings Bank has been contributing to the rhythm of life in this community since 1923. Our commitment is to help our customers reap the benefits of their hard work and dreams.

**VALLEY**  
SAVINGS BANK

**330-923-0454**

[www.valleysavingsbank.com](http://www.valleysavingsbank.com)

140 Portage Trail and 505 Graham Road, Cuyahoga Falls • 3707 Darrow Road, Stow

# WEATHERVANE

COMMUNITY PLAYHOUSE

*Wendy Brown*

*Simply Grand*  
ENTERTAINMENT



2005-2006 *The 71st Season*

### *Weatherwane Community Playhouse*

1301 Weatherwane Lane, Akron, OH 44313-5186

330-836-2626 ♦ Fax 300-873-2150 ♦ www.weatherwaneplayhouse.com

#### ***Snow White and the Seven Dwarfs***

Adapted by Jessie Braham White

July 30 - August 14, 2005

#### ***Much Ado about Nothing***

Comedy by William Shakespeare

September 14 - October 2, 2005

#### ***Over the River and through the Woods***

Comedy by Joe DiPietro

October 19 - November 6, 2005

#### ***Joseph and the***

#### ***Amazing Technicolor Dreamcoat***

by Tim Rice and Andrew Lloyd Webber

Nov. 25 - Dec. 18, 2005

#### ***Crowns***

by Regina Taylor

A gospel musical based on the best-selling book *Crowns:*

*Portraits of Black Women in Church Hats*

January 11 - February 5, 2006

#### ***Anitgone*** by Sophocles

February 17 - March 5, 2006

#### ***Lend Me a Tenor***

Comedy by Ken Ludwig

March 22 - April 9, 2006

#### ***Wait Until Dark***

Thriller by Frederick Knott

April 26 - May 14, 2006

#### ***Aladdin*** Performed by the Piper Puppets

May 6, 2006

#### ***The Sound of Music***

by Richard Rodgers & Oscar Hammerstein II

June 14 - July 16, 2006

#### ***Angels in America***

by Tony Kushner

*Millennium Approaches* -- Nov. 10 - 19, 2005

*Perestroika* -- May 18 - June 4, 2006

### *Patron Information*

\* **Emergency Exits** located at the left front of the auditorium and left side of the lobby. Front door and lobby doors will also be used.

\* **Restrooms** Located in lobby alcove - wheelchair accessible.

\* **Handicapped Services** Seating for a limited number of wheelchairs. Please notify in advance if needed.

\* **Assistive Listening Devices** Available thanks to the generosity of Virginia and J. Robert Wilson.

\* **Patrons:** Expecting a call? Leave name and seat number with the House Manager. Please turn off your cell phones, pagers and audible watches.

\* **Beverages and Food** may not be taken into the auditorium during performances.

\* **Use of Cameras and Recording Devices** is prohibited during performances.

\* **Curtain time** Wed./Thurs. at 7:30 p.m., Fri./Sat. at 8 p.m. and Sun. at 2:30 p.m.

\* **Latecomers** will be seated at the rear of the auditorium during a suitable break in the play if space is available and may take their reserved seats after intermission.

\* **Exiting the Theater** Please remain seated until the auditorium lights are on. Parking lot illumination assures that getting to your car will be easy and secure.

\* **Smoking** is permitted outside the building.

\* **Lost and Found** items will be held at the Ticket Office until claimed.

\* **Comments** from audience members are always welcomed with interest. Please feel free to write to Weatherwane to express your views and opinions about our productions.

Send your comments to: *Executive Director, Weatherwane Community Playhouse.*



Patron Generosity

*Weatherwane appreciates the continuing strong support of individuals, corporations, foundations and other donors who help finance the theater's operations, capital improvements and endowment program. Weatherwane is classified as a 501(c)(3) organization and contributions are tax deductible. Following are some of the many ways in which you can take pride in your support of the art of theater in our community.*

#### \* **Become a Weatherwane Member**

Your annual support makes you a voting member of Weatherwane Community Playhouse. You'll receive discounts on educational programs and other benefits, based on the membership level you choose. Members are invited to Weatherwane's annual meeting and to other special events. Memberships are renewable annually, beginning at \$75 (Contributing), and continuing at Sustaining, Patron, Silver, Gold, Platinum and Diamond Levels. Membership is actively solicited in the fall but is accepted at any time. Members are recognized in the Playbill.

#### \* **Give a Special Gift To Say You Care**

Special donations may be made at any time to memorialize a friend or relative whose interest in Weatherwane was significant to his or her life. You may also recognize and celebrate important dates or current achievements of relatives, friends or associates.

#### \* **Remember Weatherwane in Your Will**

What better way to carry on your tradition of support to Weatherwane than by a planned gift. By taking advantage of the tax laws which encourage charitable giving, the U.S. Government will share in the cost of your gift to Weatherwane. Your gift can fulfill a specific purpose or project while providing your estate with tax savings. To help ensure that Weatherwane will continue, please contact our Executive Director for more information.

#### \* **Check For Matching Gifts** Many national and local corporations will

match your donations to Weatherwane, increasing your generosity to the theater. Please check whether or not your company participates in such a program.

#### \* **Designate Gifts To Local Foundations**

Several of this area's larger foundations accept memorial and tribute gifts in the name of specific organizations such as Weatherwane Community Playhouse. Such gifts help assure continuing grants to the theater's operations and special projects. We are enormously grateful for the impressive history of foundation support in this community.

#### \* **Sponsor or Underwrite a Production**

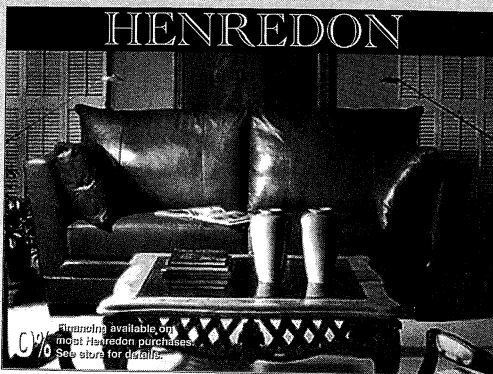
Our productions may be underwritten by local corporations or foundations. Benefits can include private "command performances" and special receptions for employees and friends when your business chooses this important method of support. Please call 330-836-2626. We'd like to discuss this kind of opportunity with you.

#### \* **Capital Project**

The construction segment of the Capital Project in 2000 included a scene shop with basement storage, a 2nd-floor classroom and rehearsal hall, soundproof production booth, elevator and fly gallery pocket above the stage and installation of the rigging system for the fly gallery. Donations for Stage Two of the project continue to purchase classroom furnishings, update the lighting system, renovate the lobby and replenish the Capital Fund for maintenance and repairs.



The Best Place For Fine Furniture in Greater Akron is at Wayside



- Over 200,000 sq. ft. of inventory.
- Providing friendly, responsive service for over 68 years.
- Professional interior designers on staff.
- We buy and sell for less ... every day.

Fine pieces from these quality manufacturers on display:

Kincaid • Pennsylvania House  
Stanley • Lexington • Nautica  
Lane • Smith Brothers • Flexsteel  
Bob Timberlake • Cochrane  
Serta • Broyhill • Clayton Marcus  
Canadel • Howard Miller • Hooker  
Saloom • Crescent • Dozens More

Visit Our New Premium Furniture Clearance Outlet

**Wayside**  
furniture

"Where You'll Find Better Furniture Priced Lower"

1367 Canton Road Akron On Route 91,  
just 1/4 mile south of Route 224  
Shop Daily 10 to 9, Saturday 10 to 6, Sunday 1 to 6  
Visit our website: [www.wayside-furniture.com](http://www.wayside-furniture.com)

330-733-6221  
Toll Free 877-499-3968

Experience the dedication and talent of spirited performances.



Our range of legal expertise will move you.

Proud to Support the  
Akron Arts Community

**VORYS, SATER,  
SEYMOUR AND PEASE LLP**

First National Tower • 106 South Main Street  
Akron, OH 44308-1417  
tel (330) 208-1000 • fax (330) 208-1001  
[www.vssp.com](http://www.vssp.com)

Akron, OH Cleveland, OH Columbus, OH Cincinnati, OH Alexandria, VA Washington, DC

**3** Hiram College

INTIMATE LEARNING. GLOBAL REACH.

3 DISTINCT PROGRAMS AT ONE PRESTIGIOUS INSTITUTION

Hiram's **residential program** offers students unmatched opportunities for study abroad and hands-on learning through our unique academic calendar. Our Tuition Guarantee locks in tuition and fees for four years, making college costs predictable. Call 800.362.5280.

Working adults can earn their degree by taking classes on alternate weekends through the **Weekend College at Hiram College**. Students enjoy small classes, flexible scheduling, and career counseling. Call 330.569.5161.

Hiram's new **Master of Arts in Interdisciplinary Studies** is an innovative and flexible program. Students can earn their master's in as little as two years by taking classes on alternate weekends. Call 330.569.6111.

[www.hiram.edu](http://www.hiram.edu)

relax.

Business Insurance • Personal Insurance • Life Insurance • Employee Benefits

**LEONARD**  
Insurance Services  
Providing Professional Insurance Services Since 1931.

4244 Mt. Pleasant St. N.W. Suite 200  
North Canton, Ohio 44720  
1-800-451-1904 / 330-266-1904 / Fax 330-498-8948

[www.leonardinsurance.com](http://www.leonardinsurance.com)



## History *From the Barn to the Valley*



Four society women urged Weathervane Playhouse into existence in 1935 - Grace Hower Crawford, Laurine Schwan, Helen Troesch and Muriel Maclachlan. They started with amateur theatricals at Coach House Theater, then as now part of Akron Woman's City Club. Back then Coach House was a club theater with closed membership and profits going back to the club. This left nothing for theatrical expansion or experimentation, so the ladies set up shop in a barn owned by U.S. Senator Charles Dick on Marshall Avenue. They had no money so they planned a carnival. After expenses, they cleared \$65 and declared themselves good to go.

Friends assisted in cleaning the barn that had been a garage for the Senator's cars. They scrounged for seats, curtains and a coffee pot. Seven fully costumed and staged plays were presented during the first three weeks of the summer of 1935. The audience applauded while bringing cushions from home to sit on -- the benches were hard. There was no running water or heat in the barn, but the operation had a name -- Weathervane, named for the chancicleer on the cupola of the barn. The ladies agreed that they would produce everything -- comedy, tragedy, Shakespeare, new works -- even opera. They also decreed that anyone who fit a part could be on their stage.

"The barn" was home until 1951 when it was sold, leaving the troupe homeless. The Board renovated a cement block building on Copley Road. This served until the late 1960's when the troupe moved to the Valley. In the early years,

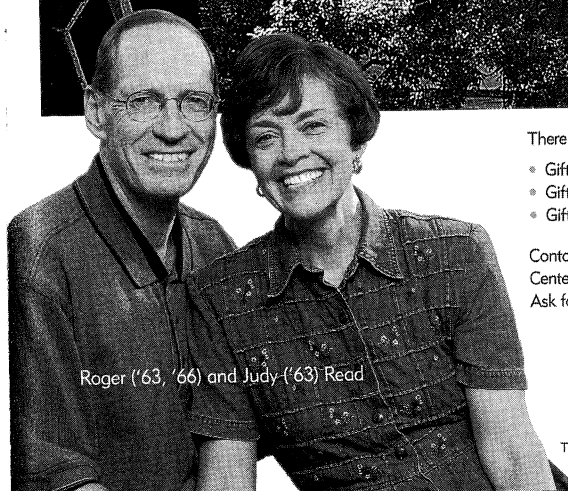
directors came from the membership and were charged with casting, costumes, settings and publicity. By 1960, there were so many shows that Bob Belfance was hired as theater director. Along with custodian/ticket manager Nora Scott, the two-person staff relied on volunteer support.

A Women's Board was formed in 1938 to offer volunteer and financial assistance. The Youth Theater Workshop grew out of classes offered by the original founders. Muriel Maclachlan was particularly energetic in teaching children, bringing in experts in dance and voice to assist her in teaching the youngsters. Muriel's classes grew until they became today's Education Department. Project STAGE©, a program with reduced-price, school day matinees for students, was added in the early 1990s.

A fund-raising drive in the late 1960s built the present facility on Weathervane Lane. The Playhouse opened in 1970 with Maggie Moore's production of *Dark of the Moon*. Grace Crawford, who died in 1971, left a legacy to pay off the mortgage. Construction made possible by the most recent Capital Campaign added classrooms, rehearsal space, scene shop, additional prop storage, elevator, library, fly gallery, stage mechanics, a sound-proof production booth and a costume shop, and also upgraded the roof and HVAC system.

Weathervane celebrated its 500th Mainstage production with the award-winning *The Laramie Project* in February, 2003. The John L. Dietz Classroom Theater for students and black box productions had its inaugural production as part of our 70th Season, opening with *Angels in America: Millennium Approaches* in January 2005.

## Invest in the future. Invest in The University of Akron.



Roger ('63, '66) and Judy ('63) Read

There are many ways you can give to The University of Akron.

- Gifts of Cash
- Gifts of Appreciated Property
- Gifts of Real Estate
- Bequests
- Gift Annuities
- Charitable Remainder Trusts

Contact David Horn, Director,  
Center for Gift and Estate Planning at 330-972-6870.  
Ask for the booklet entitled *Reflecting on Tomorrow*.

The  
University  
of Akron

The University of Akron is an Equal Education and Employment Institution



## Volunteer Sign-Up

Complete and detach this form and return it to the Ticket Office or mail to:  
Volunteer Opportunities, 1301 Weathervane Lane, Akron, OH 44313-5186

NAME \_\_\_\_\_

ADDRESS \_\_\_\_\_

CITY \_\_\_\_\_ ZIP \_\_\_\_\_ PHONE \_\_\_\_\_

E-Mail Address \_\_\_\_\_

I am interested in the following areas:  
(Check as many as you wish)

_____ Usher	_____ Classes
_____ Backstage Crew	_____ Fund Raising
_____ Costuming	_____ Box Office
_____ Acting	_____ Orchestra
_____ Set Building	_____ House Managing
_____ Sound	_____ Play Reading/Selection
_____ Painting	_____ Board Membership
_____ Lighting	
_____ Other _____	

\_\_\_\_\_ Best time to reach me at the above phone number \_\_\_\_\_

\_\_\_\_\_ I am a subscriber. \_\_\_\_\_ I am a donor.

### I HAVE AN OPINION...

About tonight's play \_\_\_\_\_

\_\_\_\_\_

About the current season \_\_\_\_\_

\_\_\_\_\_

About future seasons \_\_\_\_\_

\_\_\_\_\_

I have a fund-raising idea. \_\_\_\_\_

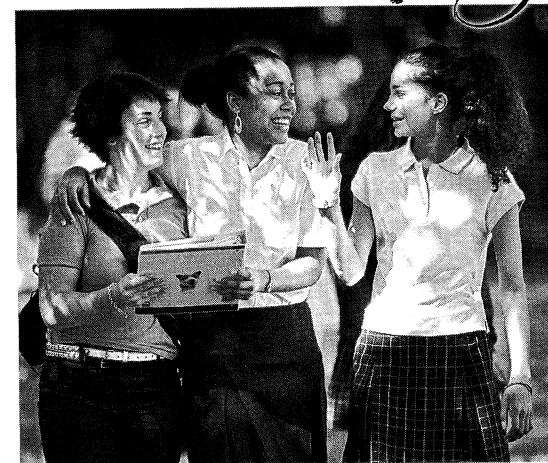
\_\_\_\_\_

We appreciate, and often respond to, opinions offered about our work. Be sure to fill in your name and address above if you wish a response or would like to be contacted.

# the Andrews Advantage

The Andrews Advantage is a curriculum designed to encourage critical thinking skills. Intensive writing, insightful reading and effective communication across all disciplines prepare students for a lifetime of learning.

Andrews has it all! Day school and boarding options, small class sizes, athletics, fine arts, and a world-class equestrian program. Call the Admissions office at 440-942-3606 or visit [www.andrews-school.org](http://www.andrews-school.org) to find out how The Andrews Advantage can benefit your daughter."



*Prepared for College, Prepared for Life!*

The Andrews School ~ [www.andrews-school.org](http://www.andrews-school.org) ~ 38588 Mentor Ave. Willoughby, Ohio 44094



## Become a Part of Summit County's

## Musical History

Special Collections, the Library's division responsible for maintaining local history materials, is planning a permanent collection of area music from Summit County-based musicians, professional or amateur, past and present.

Our local music wish list includes recordings by local

- pop
- rock
- blues
- jazz
- gospel
- classical
- R&B
- rap/hip-hop
- country
- folk and ethnic recording artists

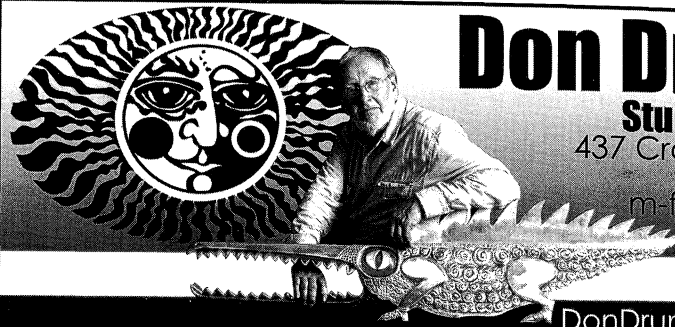
Also accepting related historical materials such as photographs, posters, programs, flyers and videos.

**How?**  
**By participating in a new initiative to collect and preserve Summit County's rich musical heritage!**

If you are willing to donate your materials to the Library, please contact the Special Collections Division at 330-643-9030, by e-mail at [specollections@akronlibrary.org](mailto:specollections@akronlibrary.org) or visit the Web site at [www.akronlibrary.org/main-sc.html](http://www.akronlibrary.org/main-sc.html)

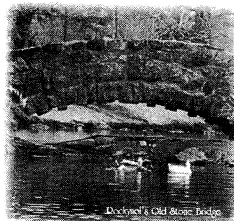
All materials will be housed in the Library's new Special Collections Division at Main Library





**Don Drumm**  
**Studios & Gallery**  
 437 Crouse St., Akron  
 330.253.6268  
 m-f: 10-6, sat: 10-5  
 500+ artists  
**shop on-line:**  
 DonDrummStudios.com

The Longer I Live  
 the More Beautiful  
 Life Becomes.  
 — Frank Lloyd Wright




Rockynol...You'll Be Happy to Call Us Home!

**ROCKYNOL**

Akron's Premier Retirement Community

330-867-2150



**Amer**  
**Cunningham**  
 Co., L.P.A.


Attorneys and Counselors At-Law

159 South Main Street, Suite 1100 Akron, Ohio 44308  
 Phone: 330/762-2411 Fax 330/762-9918  
 Visit us online at [www.amer-law.com](http://www.amer-law.com)

**THE Grotto**  
 ON MERRIMAN

**Seafood & Steaks**  
 at casual  
 dining prices.

1841 Merriman Rd.  
 Akron, OH 44313  
**330.869.4981**




**Ticket Information**

- \* **Tickets** Purchase in person or charge by phone with Visa, MasterCard or Discover at 330-836-2626, Tuesdays through Fridays 10 a.m. to 5:30 p.m. and on performance Saturdays from noon to 5:00 p.m. *Reservations are also required when using coupons from your Weather-vane Super Coupon Book, complimentary tickets or coupons offered from any other cooperating arts organization.* Please arrive 20 minutes before curtain time to pick up your tickets.
- \* **Special seating** Please inform us if you have seating preferences due to visual, auditory or other physical needs. Please remember orders are filled on a first-come, first-served basis with season subscribers and advanced group sales taking first priority.
- \* **Season Subscriber Exchanges** must be phoned in at least 24 hours prior to your originally scheduled performance. We can't always guarantee the same seats but we'll give you the closest available re-

placements. An upgrade fee applies when changing from a Preview Night. *If you cannot use your subscription seats, please call us at least 24 hours in advance to release them. We will recognize this as a donation.*

- \* **Student Rush Tickets** go on sale 30 minutes before curtain time. Students with a valid ID may purchase any remaining tickets for half price. Rush tickets cannot be reserved in advance.
- \* **Discounted Group Reservations** are available for groups of 15 or more. Call Weather-vane at 330-836-2626 to learn how you can entertain friends, associates or clients with a night at the theater or to plan a fund-raising event for larger groups.
- \* **Gift Certificates** are available at any time in any amount you choose.
- \* **Recycle your playbills** If you do not wish to keep the playbill, please drop it in our recycling box as you exit the theater.

One of the nation's **finest** boarding schools is not in New England



**Open House:**  
 Sat., Oct. 29, 2005  
 Sat., Apr. 29, 2006

More information online or call 330.650.9717.



Take a closer look at [www.wra.net](http://www.wra.net).  
 Learn more about the considerable advantages of a boarding school education.

**WESTERN RESERVE ACADEMY** Hudson, Ohio / Coed / Day & Boarding / Grades 9-12

PROUDLY  
SUPPORTING  
THE ARTS.

A black and white photograph featuring a vintage portable amplifier on the left and a harp on the right. The amplifier is a rectangular box with a large, textured speaker grille and a control panel with several knobs and switches on top. A coiled cable extends from the amplifier towards the harp. The harp is a traditional stringed instrument with a curved frame and many strings. Both objects are set against a dark, textured background.

# One Stop Shopping from

**CUTLER** **GMAC**  
Real Estate

**1** **1**  
TITLE ONE MORTGAGE ONE

**www.cutlergmac.com**

CUTLER/GMAC Real Estate is the solution to *all* your home service needs. In one stop, you'll find a real estate, title and mortgage company to simplify your home buying/selling process. Visit our award-winning website to assist in your home search and provide answers to many of your questions.

**Let the convenience of CUTLER/GMAC Real Estate work for you.**

An independently owned and operated firm



The Women's Board was formed in 1938 to "offer voluntary service and financial assistance to the Playhouse." Women's Board has energized youth education programs, sponsored productions, spearheaded fund raisers and paid for many of the amenities we appreciate in the Green Room/kitchen. Members of this active group are invaluable as hostesses, office helpers and backstage. The Women's Board sponsors an annual puppet presentation for children and also operates the Gift Boutique and Bank One Art Gallery.

*New members are welcomed.*

### 2005-2006 Officers

**Margaret Dietz** . . . . . President  
**Jill Forster** . . . . . First Vice President  
**Wendy Cooley** . Second Vice President

**Lois Simmons** . . . .Corresponding Sec.  
**Sue Smith** . . . . .Recording Sec.  
**Jill Forster** . . . . .Treasurer

### Committee Chairs

Art Gallery . . . . .	<b>Marci Paolucci</b>
Boutique . . . . .	<b>Mary Wolfman</b>
	<b>B.J. Ziegler</b>
Boutique Treasurer	<b>Barbara O'Connor</b>
Cast Suppers . . . . .	<b>Randie Sass</b>
Costumes . . . . .	<b>Henrietta Cook</b>
Hospitality . . . . .	<b>Janet Budai</b>
	<b>Marta Williger</b>
Hostesses . . . . .	<b>Bess Raines</b>
	<b>Wendy Cooley</b>

House Committee . . . . . **Sue Smith**  
 Membership . . . . . **Lois Simmons**  
 Newsletter . . . . . **Lois Simmons**  
 Nominating . . . . . **Nancy Ziegler**  
 Murder Mystery . . . . **Karen Burrridge**  
 Puppet Show . . . . . **Betty Williams**  
    **Leslie Lund**

## Boutique Treasures

Our lobby Gift Boutique is a fund-raising project of our Weathervane Women's Board. Shop from one hour before curtain time or during intermission for great gift items. Prices are extremely reasonable and the items on sale include a

delightful variety from clowns and animal figures to pens, pins and earrings and some special items for the “men” in your life. Our Boutique volunteers will also assist you with information on purchasing gallery art works.

Weathervane Playhouse is a member of American Association of Community Theatre,  
Akron Area Arts Alliance and Ohio Community Theatre Association.



akron area **arts** alliance





## Weathervane's Professional Staff

**ELYNMARIE KAZLE** (Executive Director) is in her ninth Weathervane season. Her 25+ year theatre career began in stage management then moved into producing, fundraising and public relations. She's had the pleasure of working with a wide range of artists from Baryshnikov to Tommy Tune to Viggo Mortenson, in theaters such as The Mark Taper Forum, San Diego's Old Globe, Sacramento Theater Company, Opera Columbus, Great Lakes Shakespeare Festival and Brooklyn Academy of Music. Akron played an important part of her career early on when she apprenticed with Tom Skelton at Ohio Ballet. In addition, past experience includes a stint with the *Wall Street Journal*, working at Brandt & Brandt, Robert Freedman Dramatic Agency serving as cultural ambassador to Sweden. She has served six years as USITT's VP of Membership and Development where she founded the nationally-known Stage Management Mentoring Project. She lives in Akron with husband Mark and her 10-year-old son Banno.

**JANIS L. HARCAR** (Director of Marketing & Development) holds an M.A. in Arts Administration from The University of Akron and a B.S. in Music Education from Kent State University and has been a Weathervane staff member since 1993. She serves as the Artistic Director of the Ravenna Community Choir and Director of St. Paul Lutheran Church Choir also in Ravenna. Jan was honored with the 2003 Trustees Award.

**ALAN SCOTT FERRALL** (Scenic Designer/Technical Director) began at Weathervane under the tutelage of John R. Thomas. This is his ninth season. Before Weathervane, he worked at Cuyahoga Falls High School where he was awarded a Design Excellence citation from USITT

and a place in *Who's Who Among America's Teachers*. He has designed for many local high schools as well as for The Players Guild, Cleveland Signstage and Channels 45/49. This past year he was awarded an Excellence in Set Design from the Ohio AACTFEST for *A Lesson Before Dying*. Scott has earned four Chanticleer Awards -- one as stage manager for *Fences*, the others as lighting co-designer for *A Man for All Seasons* and lighting designer for *The Laramie Project* and *A Lesson Before Dying*. He takes great pleasure in writing the end-of-the-season revue for The Not-Ready-for-Mainstage Players who appear at our annual Chanticleer Awards Dinner.

**SEAN McCONAHA** (Director of Education and Producer of Youth/Family Productions) holds a dual major in Theater Performance and Pre-Law from West Virginia Wesleyan College and an M.A. in Theater from The University of Akron. He is a free-lance actor and director throughout northeastern Ohio. Sean directed the OCTA award-winning production of *Romeo and Juliet* as well as Chanticleer winners for Best Production, *The King of the Kosher Grocers* and *A Lesson Before Dying* and the inaugural Dietz production of *Angels in America: Millennium Approaches*. He lives in Bolivar with wife, Beth, daughters, Leda and Delaney, and twins Zoe and Griffin.

**KEITH D. CAMPBELL** (Supervisor Front-of-House & Patron Services) holds a B.A. in English from The University of Akron, where he served as editor of *The Buchtelite* and sang with the Akron Symphony Chorus. During the summers of 1995 and 1996, he interned in the box office at Porthouse Theatre Company. Keith joined the Weathervane staff in November 1996 and was honored with the 2005 Trustees Award. He lives in Akron.



## Professional Staff continued

**JOHN COTTER** (Business and Public Relations Assistant) has the duties that come with helping Jan and Keith in the Marketing and Box Office areas. He also coordinates our Acme Community CashBack program and urges everyone to save their Acme register tapes and bring them to him at the Playhouse. John retired after 36 years with Ohio Edison and has been a long-time volunteer of the Playhouse having served on the Production Board as its President and Co-Chair of Properties. He has worked backstage for many productions and has won Chanticleers for Properties Design for four productions. He is, however, most proud of his four grandchildren, Dana, Nicholas, Kristin and Sammy.

**KATHRYN A. KOHL** (Assistant Technical Director) holds a degree in Elementary Education from BGSU and a Master of Business Management degree from Aurora College in Aurora, IL. She began her theater career as a volunteer on many lighting, set construction and props crews. She won a Chanticleer for properties co-design of *The Philadelphia Story*. Kathy also serves as Resident Master Carpenter and Master Painter for the Theatre Department at Firestone High School. She lives in West Akron with hus-

band Doug and their three children, Stephanie, Zachary and Katie.

**DREAJEAN L. BROWN** (Data Services Manager) holds a Master of Science degree in Technical Education and a Bachelor of Science degree in Education from The University of Akron. She is an active member of Delta Sigma Theta Sorority, Inc. Akron Alumnae Chapter. Drea says her major priority is spoiling her grandchildren. Balancing her time with work and family, she still finds time to crochet baby blankets for the Neo Natal Unit at Children's Hospital in Akron, and lap afghans for the Life Care Facility in Pittsburgh, PA.

**BARBARA TROTTER** (Volunteer Coordinator) holds a Master of Arts degree in Communications from the New York Institute of Technology. She teaches speech and communication courses at Stark State College of Technology in North Canton. Barb began volunteering with Weathervane Community Playhouse in 2000, working backstage on props crews. She designed costumes for the productions of *Arsenic and Old Lace* and *Proof*, both in 2003. A member of the Weathervane Women's Board, Barb lives in Akron.

## Many Thanks to Our Season Sponsors

Ohio Arts Council - Season Sponsor  
WKSU 89.7 FM -- Season Sponsor  
Buckingham, Doolittle & Burroughs --  
*Much Ado about Nothing*  
The Goodyear Tire and Rubber Company --  
our *Youth/Family Series*  
Sisler McFawn Foundation -- Project STAGE  
ONMOVA Solutions Foundation --  
Project STAGE  
Akron Publishing Company - Ad Sales  
Minx Design - Graphic Designer  
Greystone Hall -- Reception Sponsor

The Grotto on Merriman -- Reception Sponsor  
*Watch for the Grand Opening of the  
Grotto at Tallmadge Circle featuring the  
"Grand Buffet"*  
Tiffany's Bakery -- Opening Night Cakes  
Ashe/Graves Management Group -- *Wait Until  
Dark*  
Summa Health System Foundation -- *The  
Sound of Music*  
Margaret J. Dietz -- *Perestroika*  
Gay Community Endowment Fund of Akron  
Community Foundation -- *Perestroika*



## Board of Trustees

Weathervane Community Playhouse is a non-profit 501(c)(3) corporation operated by a board of volunteer trustees representative of the general community. Regular monthly meetings of the Board of Trustees are open.

### Officers

Mary Beth Kluge . . . . .	President	Jim Horvath . . . . .	Assistant Treasurer
William Glaeser . . . . .	First Vice Pres.	Chic Carlson . . . . .	Secretary
Christopher Esker . . . . .	Second Vice Pres.	Margaret J. Dietz . . . . .	Historian
Jack Steele . . . . .	Treasurer	George Moxon . . . . .	Immed. Past Pres.

### 2005-2006 Trustees

Kathy Ashcroft	Margaret Dietz	Roy Hartz	Lucy J. Randles
Aaron S. Berke	Rozell Duncan	Charles Korecki	Virginia Sayre
Henry Bishop	Jon Fiume	Karen Lefton	Chas Schreckenberger
Desiree Bolden	Harold Foster	Myron Lewis	James Sneed
Robert Core	Barry Friedman	Gregg Manes	Richard Worswick

### Advisory Board Members

Mary Adams	W. Scott Emerick	Eric Jones	Thomas R. Trotter
Chuck Ayers	Helen Fleming	Ardith M. Keck	Bob Velotta
Bunny Ballance	Jill Forster	Dede Klein	Shari Whitfield
Madeline Bozzelli	Dr. Penelope Frese	Leslie Lund	Mary Whitmer
Stanley Brandt	Ian Haberman	Eileen Moushey	Mary Wolfman
Ann Brennan	Richard Harris III	Jim Nilsen	Mel Wolfman
Nancy Cates	Bob Hasman	Jo Ann Oelschlager	Mona Wolfman
Ron Cimini	Marilyn Heagerty	Margo Snider	June Zeno
Frank Comunale	Libby Jacobs	Dr. Susan Speers	

### Production Board

#### Charles Korecki and Bill Berry -- Chairs

Auditions . . . . .	M.J. Coulson
Costume Shop . . . . .	Betty Williams
Lighting Department. . . . .	Mark A. Zimmerman
Sound Department . . . . .	Charles Korecki
Stage Management . . . . .	Bill Berry
Play Selection . . . . .	Ian S. Haberman
Women's Board Representative . . . . .	Margaret Dietz
Salon Series Coordinators . . . . .	Tom Abdoo & Sue Smith
<i>Ex-Officio from the Staff:</i>	
Executive Director . . . . .	Elynmarie Kazle
Technical Director . . . . .	Alan Scott Ferrall
Producer of Youth/Family Productions . . . . .	Sean McConaha
House Managers . . . . .	John Cotter



## Our Generous Donors

*Did you know that the average cost, per seat, to produce a Weathervane show is \$32.85? Thanks to the generosity of the following individuals, corporations and foundations, the cost of your seat is \$20 or less! We gratefully acknowledge their support.*

### SUPER FOUNDERS (Gifts of \$10,000+)

City of Akron	Ohio Arts Council
Estate of Vaughn G. Austin	State of Ohio
Estate of Paul A. Daum	The University of Akron
The GAR Foundation	Weathervane Women's Board

### FOUNDER'S CIRCLE (Gifts of \$5,000+)

Akron Community Foundation	OMNOVA Solutions Foundation
H. Peter Burg Fund of ACF	Charles E. & Mabel M. Ritchie
Mary B. & Dr. George L. Demetros	Memorial Foundation
Foundation	Sisler McFawn Foundation
Margaret J. Dietz	Lloyd L. & Louise K. Smith
John S. & James L. Knight Foundation	Memorial Foundation
John A. McAlonan Fund	

### PLATINUM MEMBERS (Gifts of \$1,000+)

#### INDIVIDUALS

David N. Ashe	Roy & Mary Hartz♦
Susan C. & Patrick T. Baker	Charlotte & Jim Horvath♦
Family of Roger G. Berk, Sr.	Elynmarie Kazle & Mark A. Zimmerman
Ann & Dave Brennan	

#### CORPORATIONS & FOUNDATIONS

Aircraft Braking Systems Corporation	Gay Community Endowment Fund
F.W. Albrecht Family Foundation	The Goodyear Tire & Rubber Company
Glenn R. & Alice B. Boggess Memorial	The Lehner Family Foundation
Foundation	Millennium Fund for Children
Brennan Family Foundation	Walter Mirapaul Foundation
Bridgestone Firestone Trust Fund	Laura R. & Lucian Q. Moffitt Foundation
Lisle M. Buckingham Fund of ACF	The RC & Katherine Musson
Dominion East Ohio	Charitable Foundation
FirstMerit / Akron	M.G. O'Neil Foundation

### GOLD MEMBERS (Gifts of \$500 - \$999)

#### INDIVIDUALS

David N. Ashe	Lillian L. Hudimac	Gregg A. Manes♦
W. Scott & Sandra Emerick	Dr. & Mrs. Edward Koosed	George Moxon II♦
Mary & William Glaeser♦	Leslie & Richard Lund	Mary & Mel Wolfman
Janet & Jim Heilmeier	David & Orlene Makinson	

#### CORPORATIONS & FOUNDATIONS

*A. Schulman	National City Bank
Michelson Foundation	*Summit County Internists, Inc.
Myers Industries, Inc.	

♦Denotes Board of Trustees



## Our Generous Donors continued

### SILVER MEMBERS (Gifts of \$250 - \$499)

#### INDIVIDUALS

Juanita & Chic Carlson	Mrs. Harvey Karam	Michael Russell
Mildred Collis	Mary Beth Kluge♦	Dr. Douglas & Jane Sanders
Frank C. Comunale	Kathy & Doug Kohl	Dr. Steven P. Schmidt
Susan & Michael Davis	Shelley & Thomas Koutnik	Dr. Susan D. Speers
Dr. Richard & Mary Beth Ellison	Patricia Obenour	Jack Steele♦
Helen & Chisna Fleming	Barbara B. O'Connor	Martha Kaltenbach & Tom Trotter
Barry Friedman	Judy & Roger Read	Connie & Bob Velotta
Dr. Jack & Libby Jacobs	Helene & Bill Rogovy	Libby & Jeff Wilson

#### CORPORATIONS & FOUNDATIONS

Brockman, Coats, Gedelian & Co.	*GoJo Industries	*Zuckerman Consulting Group
*Cedarwood Companies	*Morris Berzon Fund of the	
*Davey Tree Expert Company	Jewish Community Board	

### PATRON MEMBERS (Gifts of \$150 - \$249)

#### INDIVIDUALS

David Ashe	Dr. & Mrs. Stephen A. Farkas	Leslie & David Nelson
Kathleen Ashcroft♦	Jon A. Fiume♦	Lucy J. Randles♦
Mary & Rollie Bauer	Diana & John Gayer	Dr. John M. Ream, Jr.
Curt Brown	Ellen & Karl Hay	Virginia A. Sayre♦
Carol Button	Jay Hershey	Charles Schreckenberger♦
Mr. & Mrs. James D. D'Ianni	William W. & Anne M. Lowery	Betty Watterson
Rozell R. Duncan, Ph.D.♦	William Manby	Pat & Leo Weill
Marie & Marc Dusini	Margaret & John McBride	Harold F. White

#### CORPORATIONS & FOUNDATIONS

*AAA - Akron Automobile Assoc.	Flexsys America	North Akron Savings
Akrochem Corporation	*Hitchcock Fleming & Assoc.	*Peters, Tschantz & Bandwen, Inc.
Akron Tool and Die	Infocision Management Corp.	*Smithers Scientific Services
*Amer Insurance	*Maynard Family Foundation	*Steere Enterprises
*Fifth Third Bank	*Mogen Real Estate	*Yoder Brothers, Inc.

### SUSTAINING MEMBERS (Gifts of \$100-\$149)

#### INDIVIDUALS

Dr. Miriam Agins	Dr. & Mrs. Lawrence Kaye	Jo Ann Oelschlager
Doug & Mary Ann Bell	Dr. & Mrs. C. William Keck	John O'Neill
Henry Bishop & Karen Wood	Dede Klein	Gloria T. Reich
Robert W. Briggs	Richard & Judy Kotick	Cynthia Ross
Patricia & James Burke	Bruce G. Kriete	Sue & Joe Schaut
Timothy H. Champion	Carol Krueger	Lois & Paul Simmons
Mrs. C.B. Dagilis	Margaret Lloyd	Sue & Richard Smith
Mrs. Carol A. Deeser	Mr. & Mrs. Gary Leidick	Jean & Ethel Soudry
Patricia & Thomas Doak	Dr. Donald & Wendy MacKay	Mr. & Mrs. Edgar Steinmark
Tatiana & Richard Harris	Virginia D. Moline	Thomas Stephan
Marilyn Heagerty	N. Joel Moran	Dr. & Mrs. Robert Stone
Mary Ann Jackson	The Moushey Family	James Switzer & Gretchen
Carla & John Kachmar	Dr. George & Janet Nankervis	Laatsch



## Our Generous Donors continued

### SUSTAINING MEMBERS - Individuals Continued

Paula & John Troche	Mona Wolfman	Dan & June Zeno
Linda Waite	Dr. Jeff Yatsu	Laurie Zuckerman
Mr. & Mrs. Jack Wigley	B.J. Zeigler	

#### CORPORATIONS & FOUNDATIONS

Business Interiors & Environments	*Hottle & Associates, Inc.	*SGS Tool Company
Holland Oil Company		*Sterling Jewelers, Inc.

### CONTRIBUTING MEMBERS (Gifts of \$75 - \$99)

#### INDIVIDUALS

Joseph Bolta	Bridget & Steve Dolin	Nancy & Harold Rex
Carol Boyd	Alan Scott Ferrall	Barbara & Jim Shriner
The Core Family♦	Mr. & Mrs. James Forster	Barbara & Russell Stevic
Trish & Stephen Crane	Shirley E. Jordan	Linda M. Werntz &
Jane & John DeYoung	Dona Bowman & Karlan Kamerer	Robert E. Cunningham
Todd Dieringer	Thelma & Joseph Rapotec	

#### FRIENDS (Non-Voting)

Mary Jane Baron	George J. Gauthier	Dr. & Mrs. John Saks
Bill Berry	James Gilder	Jewell Cotter Sauser
Jeff Brinton	Ian S. Haberman	Jody & Todd Schweiger
Richard Brockett	Harry E. Jackson	Pearl D. Sentelik
Robert Dague	Bonnie M. Jones	Janey & Howard K. Slaughter
Rebecca DeBolt	David W. Kellogg	Ludwig Stern
Extra Stimulus Inc./Akrobiz.com	Marilyn & Bill Miller	
Emily Audra Fleisher	Richard Oberdorfer	

### SPECIAL 100-HOUR MEMBERSHIPS

Maryanne & John Cotter	Dana North	Banno Rothman
Dede Klein	Helena Olee	Chris Simmons
Jo McGarvey		

#### IN-KIND DONATIONS

Martha Kaltenbach Trotter	Elynmarie Kazle	Tom Marshall
Cecilia Sveda	Alan Scott Ferrall	Tom C. Barnes
John Cotter	Drea Jean Brown	Betty Watterson
Richard Lund	Janis Harcar	John O'Neill
Jim Horvath	USITT	

Weathervane Community Playhouse gratefully acknowledges **Allstate Giving Campaign, IBM, SBC, The Lubrizol Foundation, ExxonMobil Foundation, Merrill Lynch and State Farm Companies Foundation** for contributions made through matching gifts programs.


Weathervane Community Playhouse gratefully acknowledges **The Sisler McFawn Foundation, Akron Community Foundation, OMNOVA Solutions Foundation, Dominion East Ohio and The Millennium Fund for Children of the ACF** for contributions for Project STAGE presentations and Youth Outreach Programs..





## In the Bank One Visual Arts Gallery


The original von Trapp family, known as The Trapp Family Singers, was presented by the Tuesday Musical Club in a performance at Stan Hywet Hall's Music Room in 1942. More than six years after that event, the von Trapp grandchildren performed during the summer of 2004. Pictures, program and announcements from these performances were provided by Stan Hywet. Stephen Paschen, Senior Archives Associate from the Archival Services of Bierce Library at The University of Akron, enlarged these materials from and other images of the von Trapp family that he researched. Additional research help was provided by Dylan Dettling. The Trapp Family Lodge in Stowe, Vermont provided access to materials that were also reproduced for framing by Steven Paschen.

Jack Richards, internationally acclaimed artist and owner of The Jack Richards Studios in Cuyahoga Falls, provided a painting done by Maria von Trapp, the daughter of the famous *The Sound of Music* couple. She had been a visiting artist at the Jack Richards Gallery where she conducted a workshop on painting techniques.

 Weathervane Playhouse is handicapped accessible. Ramps are available to the front doors, auditorium and seating.

 Assistive-listening devices for the hearing impaired are available at the Ticket Office.

 Large-Type program inserts are available at the Ticket Office. These copies are not full playbills but contain information unique to this production. These inserts are photocopied and are available in limited quantity.

 American Sign Language interpretations are scheduled for selected Sunday performances.

 Ohio Relay System 1-800-750-0750 TDD. Call to have your ticket order placed.

## H.O.T. Summer Camps 2006

It won't be long before you begin to plan your summer activities. Weathervane's summer camps are **Hands On Theater** and fun! We offer three summer sessions in our education facility. In a comprehensive theater-training program led by theater professionals, students learn about acting, improvisation, stage directions, auditioning and more. (*Register online at [weathervaneplayhouse.com](http://weathervaneplayhouse.com)*)

**H.O.T. Session 1**  
**June 19 - 30, 2006**  
6- to 8-year-olds

**H.O.T. Session 2**  
**July 3 - 14, 2006**  
8- to 10-year-olds (no class 7/4)

**H.O.T. Session 3**  
**July 17 - 28, 2006**  
10- to 12-year-olds

**Audition Workshop**  
Students 13+ years of age  
**June 19 - 23, 2006**

**Musical Theater**  
Students ages 9 - 12  
**June 19 - 23, 2006**

**Summer Stock**  
Students 14 years of age and up  
Previous theatrical experience required  
Special performances Aug. 18 & 19  
Limited to 18 acting and 4 technical positions

**August 4 - 18, 2006**  
10 a.m. to 4 p.m. Monday - Friday

The production will be Edgar Lee Masters' *Spoon River Anthology*.



## Welcome from the Executive Director

Welcome to Weathervane.



As final preparations are under way here for *The Sound of Music* and summer is finally on the way, we are already preparing for the show that will open our 2006-2007 youth and family season. I know you will enjoy our summer musical, *Madeline's Rescue*, directed by **Sarah Bailey**, which is adapted from the best-selling children's series. In addition to *Madeline*, we will present our holiday family classic, *Joseph and the Amazing Technicolor Dreamcoat*, and our teen actors will spend the spring preparing *Romeo and Juliet* for you. As for the mainstage, we will focus on comedies, dramas and a musical centered around the theme of family along with a good old fashioned musical revue called *Smokey Joe's Café* -- a collection of ever-so familiar songs by songwriters Jerry Lieber and Mike Stoller (also directed by Kevin Joseph Kelly). We begin the Grace Hower Crawford mainstage season with Tom Dudzik's funny take on the Italian-Catholic family, *Over the Tavern*. This is the story of what can happen when a budding young comic debates religion with a seriously traditional nun. Three other shows in the season were written by artists who, until recently, were still productive and prolific but have, unfortunately, passed away. I know you will be engaged by the drama of Arthur Miller's *All My Sons*, August Wilson's *Fences* and Wendy Wasserstein's funny take on sibs, *The Sisters Rosensweig*.

We close with a musical -- *The Full Monty*. Don't be fooled by the title. This musical is about a post-industrial town much like Akron. In this story, the plant has closed and the workers are left to find a way to care for themselves and their families. The solution is not a traditional one, but we can see that they will do nearly anything to keep their families cared for and safe. Add the above to the John L. Dietz Theater selections including the area premiere of the musical *The Last Five Years* and the comedy *String of Pearls*, you truly have a year of modestly priced entertainment options right at your fingertips!

This season we had the good fortune to have two plays sold out during each show's last weekend. The 2006-2007 season promises to be every bit as good as the last and you don't want to be left out. Subscription renewals and early-bird options are on sale now.

I want to express my thanks to director **Kevin Joseph Kelly**, musical director **Heidi Herczeg**, stage manager **Jerry Mirman** and the rest of *The Sound of Music* company for their many hours spent preparing this production. And, thank you for coming to see the show. If you liked your experience, please take a moment to drop us a note, sign on for a membership or recommend us to a friend!

Happy Summer!

*Elfrunice Kyle*

Through the **support**  
of our **generous donors,**  
we **save lives** every day.



Good luck to the cast  
on their performance.



Weathervane

Community Playhouse

71st Season – 2005-2006 – Production # 520

June 14 - July 16, 2006



by **Richard Rodgers &  
Oscar Hammerstein II**

Book by Howard Lindsay and Russel  
Crouse

Suggested by *The Trapp Family  
Singers* by Maria Augusta Trapp

Sponsored by



Directed by **Kevin Joseph Kelly**

Musical Director **Heidi Herczeg**

Choreographer **Lora Workman**

Stage Manager  
**Jerry A. Mirman, Jr.**

Lighting Co-Design by  
**Jen Farris and Becca Carter**

Properties Design by  
**Danielle Rusen**

Sound Design by  
**Casey Jones**

Costume Design by  
**The WCP Costume Committee**

Assistant Stage Managers  
**Alison Cooper and Stephanie Kohl**

Scenic Designer/Technical Director  
**Alan Scott Ferrall**

*The Sound of Music* is produced by special arrangement with the  
Rodgers and Hammerstein Theatre Library  
1065 Avenue of the Americas, Suite 2400, New York, NY 10018.

Weathervane productions are sponsored in part by



Weathervane Community Playhouse, 1301 Weathervane Lane, Akron, OH 44313-5186  
Ticket Office: 330-836-2626 – Fax: 330-873-2150 – For staff Emails -- please see website  
[www.weathervaneplayhouse.com](http://www.weathervaneplayhouse.com)



## About the Musical, Authors & Composers

**The Sound of Music** tells a true that audiences in the late 1930s and early 1940s didn't guess at when they heard the Trapp Family Singers in concert all across America. No one realized that the German-speaking family with the "stairway" of seven children were penniless exiles, driven from their home by the Nazis and forced to turn what had once been a joyous hobby into a survival profession. After the Baroness von Trapp published a book of reminiscences, important people took notice. Producer Leland Hayward invited his friends Howard Lindsay and Russel Crouse to write a libretto. Old German songs were to be used, with some new ones added by Richard Rodgers and Oscar Hammerstein II. Mary Martin was recruited to play Maria. When the show opened in New York on November 16, 1959, the first nine months of performances were nearly sold out. For two years, *The Sound of Music* was the hottest ticket in town. The show ran for two more years while touring companies fanned out across the country -- starring Florence Henderson and Jeannie Carson.

In 1965, the motion picture version starring Julie Andrews was released by 20th Century Fox. At the 1966 Oscar ceremonies, it garnered five Oscars, including Best Picture of the Year. In 1998 the musical returned to Broadway with a little more emphasis on the Nazi threat to the family and to their country. Rebecca Luker played this Maria under the direction of Susan H. Schulman with sets by Heidi Ettinger. Two songs written for the movie were inserted in the 1998 New York revival and are included in Weathervane's production: *I Have Confidence* and *Something Good*.

### About the Authors

**Howard Lindsay** and **Russel Crouse**, who provided the libretto, won a special Tony during the Broadway run of their play, *Tall Story* (1959) for a play-writing collaboration that had lasted since they first worked together on *Anything Goes* in 1934. **Howard Lindsay** was born in Waterford, NY, where he lived until his family moved to Boston when he was 13. He became an actor, served in France during WWI and returned to New York where he was fully involved in acting and directing. He met Dorothy Stickney, his wife, when he directed a show in which she was an understudy.

**Russel Crouse**, born in Findley, OH, went to Toledo public schools and became a reporter for the Cincinnati Commercial Tribune at age 17. He then joined the Navy during WWI. He wrote his first Broadway show in 1931 collaborating with Hammerstein and Morrie Ryskind on *The Gang's All Here*.

**Richard Rodgers** and **Oscar Hammerstein II** were students together at Columbia University where they wrote some songs for college shows around 1920. Their first collaboration was *Oklahoma!* in 1943 and it continued until Hammerstein's death in 1960. In the 17 years of collaboration, they created nine of the most glorious stage musicals in American history including *Carousel*, *South Pacific* and *The King and I*. They wrote songs, in all, for 23 musicals for Broadway and eighteen films for Hollywood. Their initials, R&H were enough to ensure success.



## The Sound of Music Cast

Maria Rainer	Kathleen Culler ✓
Captain Georg von Trapp	William M. (Bill) Berry ✓
Liesl von Trapp	Jackie Komos ✓
Friedrich von Trapp	Joshua Leeson ✓
Louisa von Trapp	Hilary Hapgood ✓
Kurt von Trapp	Brian Hirsch ✓
Brigetta von Trapp	Rosie Jo Neddy ✓
Marta von Trapp	Shea C. Lee ✓
Gretl von Trapp	Madison Hayes ✓
Rolf Gruber	Brett Parr ✓
Elsa Schraeder	Shonna Y. Talley ✓
Max Detweiler	Gilgamesh Taggett ✓
The Mother Abbess	Jean Blair ✓
Sister Sophia	Christine Gingerich ✓
Sister Margaretta	Sarah Elaine Bailey ✓
Nun	A. Suzanne Hirsch ✓
Frau Schmidt/Nun	Danielle Denise ✓
Sister Berthe	Jennifer Klika ✓
Nun/Ensemble	Bonnie Z. Jewell ✓
Franz	Jerry Dorton ✓
Herr Zeller/Admiral von Schreiber	David P. Myers ✓
Baron Elberfeld	Jerry A. Mirman, Jr ✓
Herr Zeller Understudy (July 6, 7, 8)/Ensemble	Steve Shannon ✓

**\*For your safety, we request that you remain seated until the house lights have come up at intermission and after the curtain call.**

**\*The use of cameras, recording equipment and laser pointers is forbidden during this performance.**

**\*As a courtesy to fellow audience members, please make sure that cell phones and pagers are turned off during the performance.**

**\*Please do not bring food or drink in the auditorium.**

**\*NOTE: In case of an emergency in which the performance cannot continue, Calamity Vouchers will be issued for a future performance. Thank you.**

### Track Your Favorites

Keep track of your favorites all season long and you'll be prepared to vote for our Chanticleer Awards! Use this list as a guide...

Sound Design	Supporting Actor -- play & musical
Lighting Design	Lead Actress - play & musical
Properties Design	Featured Actress -- play & musical
Costume Design	Supporting Actress -- play & musical
Lead Actor - play & musical	Best Production
Featured Actor -- play & musical	



## About Our Directing Team

**Kevin Joseph Kelly** (Director) is a director/actor/performance coach in the tri-state area. He is thrilled to be making his directing debut at Weathervane Playhouse with *The Sound of Music*. He has also directed at Beck Center for the Arts, where four of his shows are in the overall top 10 grossing productions, Lake Performing Arts, Clague Playhouse and Rocky River Community Theatre, where he served as Artistic Director for more than three years. He is thrilled to be reuniting with his musical director Heidi Herczeg and choreographer Lora Workman. As an actor, he just completed double duty at The Cleveland Play House performing as Mr. Toad in *The Wind in the Willows* directed by Seth Gordon, Associate Artistic Director, and *Walkin' My Baby Back Home*, a Nat King Cole musical revue, directed by William Hoffman in The Cleveland Play House Club Cabaret Series. His favorite roles include Molina in *Kiss of the Spider Woman*, Sweeney Todd in *Sweeney Todd*, Henry Higgins in *My Fair Lady*, Albin in *La Cage aux Folles*, and Headmaster/Ahab in *Moby Dick, the Musical*, Gary/Roger in *Noises Off* and Jeffrey in *The Dying Gaul*. He also created The Good Studio, which provides performance coaching for theatre performance and business presentations. TPOG!

**Heidi Herczeg** (Musical Director) is happy to return to Weathervane after being our Musical Director for *Ain't Misbehavin'* last season. She holds a master's degree in Music Education from Case Western Reserve University and is a graduate of Baldwin-Wallace College Conservatory. Heidi is a vocal music teacher at Bay Middle School and a master teacher in the Metropolitan Opera's Creating Original Opera Program. She has also performed with the Cleveland Opera Chorus and the Cleveland Orchestra Chorus. Most recently, Heidi was musical director for *Beehive* at Cassidy Theater and *Walkin' My Baby Back Home* at the Cleveland Play House Club. She has also worked for the Fairmount Arts Camp with Fred Sternfeld and was seen in *A Sneak Peak* at Playhouse Square.

**Lora Workman** (Choreographer) has choreographed shows at the Cassidy Theatre (*Beehive*, *Little Me* and *Songs for a New World*), where she also directed *Working* and *My Favorite Year*. She is also resident choreographer for the North Coast Men's Chorus. She is a director of the Cleveland Cabaret Project 2005 and 2006 and *Miss Gulch Returns!* at Playhouse Square Center/Kennedy's Cabaret. She was responsible for the smooth running of the Ohio Tux Bridal Show at E.J. Thomas Hall and of the Laura Salkin Bridal Shows at the east and west side Marriott Hotels. She works with the Beachwood Drama Camp and the City of Solon After-School Drama Program. She conducts show choirs for Lake Catholic High School, Parma Senior High Sound Machine, Brunswick High School Young Folk, and Normandy High School Small Group. Lora is a theater critic and weekly columnist for the *Lorain Morning Journal* and has done a promotional video for The University of Akron Theater Department.

### ORCHESTRA

**Heidi Herczeg** -- Director

Heidi Herczeg -- Keyboard	Jeff Bodkin -- Woodwinds	David Spondike -- Bass
Jordan Cooper -- Keyboard	Adam Tunnell -- Trumpet	Mike Forfia -- Bass
Sharon Nauman -- Cello	Josh Rzepka -- Trumpet	Scot Sexton -- Percussion
Debbie Bodkin -- Woodwinds	Randi Ruff -- Trombone	



## Acts, Scenes and Musical Numbers

The story is set in Austria early in 1938

### ACT I

Scene 1. Nonnberg Abbey	
<i>Preludium</i> .....	The Nuns of the Nonnberg Abbey
Scene 2. Mountainside near the Abbey	
<i>The Sound of Music</i> .....	Maria
Scene 3. The office of the Mother Abbess, the next morning	
<i>Maria</i> .....	Sisters Berthe, Sophia, Margaretta and Mother Abbess
<i>My Favorite Things</i> .....	Maria and Mother Abbess
Scene 4. A corridor in the Abbey	
<i>I Have Confidence</i> .....	Maria
Scene 5. The living room of the Trapp villa, that afternoon	
<i>Do-Re-Mi</i> .....	Maria and the von Trapp Children
Scene 6. Outside the Trapp villa, that evening	
<i>Sixteen Going on Seventeen</i> .....	Rolf and Liesl
Scene 7. Maria's bedroom, later that evening	
<i>The Lonely Goatherd</i> .....	Maria and the Children
Scene 8. A hallway in the villa	
<i>Reprise: The Lonely Goatherd</i> .....	Gretl
Scene 9. The terrace of the villa, six weeks later	
<i>How Can Love Survive?</i> .....	Max, Elsa and Capt. von Trapp
<i>Reprise: The Sound of Music</i> .....	The Children and Capt. von Trapp
Scene 10. A hallway in the villa, one week later	
Scene 11. The living room, the same evening	
<i>So Long, Farewell</i> .....	The Children
Scene 12. A corridor in the Abbey	
<i>Morning Hymn</i> .....	The Nuns
Scene 13. The Office of the Mother Abbess, three days later	
<i>Climb Ev'ry Mountain</i> .....	Mother Abbess and the Nuns

### ACT II

Scene 1. The terrace, the same day	
<i>Reprise: My Favorite Things</i> .....	The Children and Maria
<i>No Way to Stop It</i> .....	Elsa, Max and Capt. von Trapp
<i>Something Good</i> .....	Maria and Capt. von Trapp
Scene 2. A preparation room in the Abbey, two weeks later	
Scene 3. Immediately following	
Scene 4. The chapel	
<i>Gadeamus Domino</i> .....	The Nuns
<i>Reprise: Maria</i> .....	The Nuns
<i>Confitemini Domino</i> .....	The Nuns
Scene 5. The living room, one month later	
<i>Reprise: Sixteen Going on Seventeen</i> .....	Maria and Liesl
Scene 6. The Concert Hall Stage, three days later	
<i>Reprise: Do-Re-Mi</i> .....	Maria, Capt. von Trapp, Children
<i>Edelweiss</i> .....	Captain von Trapp, Maria, Children
<i>Reprise: So Long, Farewell</i> .....	Maria, Children, Capt. von Trapp
Scene 7. The garden of Nonnberg Abbey, that night	
<i>Finale Ultimo</i> .....	The Company



## Director's Notes

For many reasons, it is an honor to have my Weathervane Playhouse directing debut with *The Sound of Music*. Thank you, Elynmarie, for the opportunity.

On the surface, *The Sound of Music* is a wonderful family show that enables just that, families to get together and spend time with each other at the theatre. This show has something for everyone and leaves the audience humming any number of timeless classics. I enjoy directing these shows because it is great to say, "Hey, you can bring the whole family," and that doesn't embarrass me as an artist. I am proud of it!

But this show also addresses many serious issues that still haunt our world. As you watch tonight, the musical will reveal honest revelations of an imperfect world. But it will also reveal how individuals can overcome such obstacles with strength, resilience, love and the incredible power of faith in what you believe in. The journey that Maria and the von Trapp family take will affect us all and we will see ourselves in their decisions. This display of courage and strength is an incredible message for us more than ever.

When I think of the words, "The hills are alive with the sound of music," I believe that "The hills are alive with the power of good" -- a good that can, must and will survive. Like Maria, "I have confidence!"

Enjoy tonight. And, if you find yourself singing out loud -- who cares? -- sing all the way back home! TPOG!

Sincerely,  
Kevin Joseph Kelly



## Next On Our Stage



Story by Ludwig Bemelmans  
Adapted by Constance Congdon

Music by Mel Marvin  
**July 30- August 13**  
Director Sarah Elaine Bailey

One of the most beloved characters of children's literature takes to the stage in a sunny musical adaptation. Take a delightful plunge into the plucky Madeline's daredevil adventures with her fellow schoolgirls and their newfound friend, a dog named Genevieve.

Young Actors Series  
General Audiences

Sun. July 30, Aug. 6, 13 @ 2:30 p.m.  
Wed., Aug. 2, 9 @ 10 a.m.

Fri. Aug. 4, 11 @ 7:30 p.m.  
Sat. Aug. 5, 12 @ 11 a.m. & 2:30 p.m.



## Cast Callboard

**KATHLEEN CULLER** (Maria) is a graduate of Firestone High School's International Baccalaureate Program and the holder of a Bachelor of Art degree in theater arts from Point Park University. This year, Kathleen has played Hermia in *A Midsummer Night's Dream* for Actors' Summit; Princess Tavia in *The Frog Prince* and Raggedy Ann in *Andy and Raggedy Ann* for the Illusion Factory; and Ginger in *Gilligan's Island-the Musical* for Carnation City Players. She played Caroline Neville in *Titanic: The Musical* for The Players Guild and was Mustardseed in *A Midsummer Night's Dream* and Emma Blackstone in *Babes in Arms*, both at Firestone High School. Weathervane last saw her in 2000 when she was a member of the ensemble for *Oliver*!

**WILLIAM M. (BILL) BERRY** (Captain von Trapp) has performed on numerous stages across Northeast Ohio, appearing in such shows as *The Real Thing*, *Into the Woods*, *Baby*, *Chicago*, *The Music Man*, *Godspell* and *Pippin*, to name a few. He acted in our award-winning production of *The Laramie Project* and was El Gallo in *The Fantasticks*. He served as stage manager for our production of *The Grapes of Wrath*. His most recent theater credits include Schroeder in *You're a Good Man, Charlie Brown* and Warnock "Ticky" Waldgrave in *The Nerd*, both at Solon Center for the Arts, Man 2 in Lakeland Theatre's run of Stephen Sondheim's *Putting It Together*, and Assistant Stage Manager for our production of *Lend Me a Tenor*. He is also a performer with Mysteries by Moushey. Bill serves on the Production Board at WCP and the state board of the Ohio Community Theatre Association. A big thank you to the audience for supporting the arts!

**JACKIE KOMOS** (Liesl) will be a senior at Walsh Jesuit High School. She played Belle in this year's production of *Beauty and the Beast* at Walsh and, last year, played the nurse in *South Pacific* at the Aurora Community Theatre and was Maria the Havana Dancer and a gambler doll in Walsh's production of *Guys and Dolls*. She played Juliet in the summer production of *Romeo and Juliet*. She was one of the top five finalists for Walsh Idol and is a member of National Honor Society, the Harmony Gold Show Choir and Chamber Ensemble. Her goal is truly become "a woman for others," Walsh's motto.

**JOSHUA LEESON** (Friedrich) is a seventh grader at Wadsworth Middle School. He won a perfect attendance award at the Theatre at Starmaker. He's been on Weathervane's stage as an Oompa Loopa in *Charlie and the Chocolate Factory* and as Blick the Dwarf in *Snow White*. At school he played Wild Bill Hiccup in *Westward Whoa* and Gus the Janitor in *Bulldog Saves the Day*. He had dual roles at Western Reserve Playhouse, playing Jaybird, the Newscaster, and Billy, the Duckling.

**HILARY HAPGOOD** (Louisa) is a sophomore at Warren G. Harding High School, where she is an active member in the drama club, concert and marching bands and will be a majorette in the fall. Hilary is an Honors student with numerous awards along with a 4.0 average. She comes to us with much experience under her belt, such as WGH Cabaret, *Bone Chiller* (Zita Van Zok), *Fame* (Shirley/Ms. Sherofsky), *Annie* (Pepper), *A Musical Experience with Austin Pendleton*, *A Christmas Carol* (Little Fan), *Annie* (Tessie), *The Miracle Worker* (Helen Keller), *Fiddler on the Roof* (Villager), *Out of the Kitchen Mrs. Claus* (Volga) and *One Who Falls* (Gray Dove), along with numerous church and middle school plays. **Brian Hirsch** (Kurt), a third grader at the Chapel Hill Christian School, Brian is enrolled in the drama program at Miller South School for the Visual and Performing Arts next fall. He's been on Weathervane's stage as Skunk in *Winnie-the-Pooh* and as Snick, a dwarf, in *Snow White*. Last year he played Vertal and a guard in *Beauty and the Beast* at The Chapel. Brian is on the honor roll, the principal's club, completed Victory Drill and won a Superior in a school speech meet.

**ROSIE JO NEDDY** (Brigetta) has appeared in three productions of *Annie* (Molly), *Will Rogers Follies* ("Rosie" Rogers), *The Wizard of Oz* (Munchkin) as well as ensemble roles in *Evita* and *Joseph ... Dreamcoat*. Last year, she understudied the role of Gretl in *The Sound of Music* at Carousel Dinner Theatre. Rosie performs regularly with Easy Street Productions in Youngstown and NCP Mini-Stars in New Castle, PA. She also performs with Ballet Western Reserve in Youngstown, where she studies ballet and tap. She will be a sixth-grade student at Canfield Village Middle School.



## Cast Callboard Continued

**SHEA C. LEE** (Marta) is a fourth grade student at Miller South School for the Visual and Performing Arts. She fell in love with theater at age eight, when she was cast as a small animal in Weathervane's *Winnie-the-Pooh*. Since then, she has been accepted into the drama program at Miller South School for the Visual and Performing Arts, where she has appeared in *The Kingdom That Forgot How to Read* and *Seussical the Musical*. She enjoys origami, beeswax and other things that keep her hands busy. She is thrilled to be in *The Sound of Music* and singing "Re." Hooray!

**MADISON HAYES** (Gretl) is in the second grade at Amos McDannel School in Canton. Her classmate, Zach Holshu, is undergoing treatments for leukemia at Akron Children's Hospital and she would appreciate any monetary donation you can give to the Holshu Family. A donation box is located in the lobby. Madison has been seen on the Players Guild stage in *Godspell*. She recorded her first CD at age four, and performed the National Anthem for numerous school and community events. Madison is proud to be a big sister to Mya, her biggest fan. She would like to dedicate this performance to her uncle Scottie who is bravely serving our country in the U.S. Navy.

**BRETT PARR** (Rolf) age 15, resides in Canton and is proud to make his Weathervane debut. His previous credits include *The Wizard of Oz* (Tin Man), *Godspell* (John the Baptist), *Titanic: The Musical* (Steward) and ensemble roles in *Fiddler on the Roof*, *Hello, Dolly!* and *Cinderella*. A student at Jackson High School, Brett recently completed a tour of Ohio schools in the historical play *Wave Me Goodbye*. Thanks for Mindy, his "SOM" mom, Kevin and his family. This one's for Paige and Gran.

**SHONNA Y. TALLEY** (Elsa) has been in many productions and her lovely singing voice can often be heard at Destiny Church where she is a minister of music. She has traveled extensively with the gospel group Third Heaven and has sung before arenas of dignitaries, as well as donating her time to local charitable events. She is the mother of two talented sons, Forbes and Logan. Shonna enjoys fashion, interior design, and sitting down with a good mystery novel.

**GILGAMESH TAGGETT** (Max) is a Michigan native who came to Ohio after working as a singer/songwriter for the touring band Negative Earth. He has worked as an educator and director for the Beck Center, Spring Garden Waldorf School, Tree City Players and Cleveland Public Theatre. He sings for the jazz vocalese band Everybody's Boppin, which premiered at Cleveland Play House where he also performed in *Alice's Adventure in Wonderland* and *Mambo Italiano*. Gilgamesh has also appeared in *Amadeus* and *As You Like It* at Great Lakes Theater Festival, The Cult, *Uncle Tom's Cabin* and *Discordia* at Cleveland Public Theatre, *La Cage aux Folles* and *1776* at the Beck Center. He is currently developing a satirical comic book based on Lakewood superheroes called *The BF3*. Thanks to Queen Bee and TPOG.

**JEAN BLAIR** (Mother Abbess) teaches voice at The University of Akron, where she has appeared in recitals, operas, oratorios and musical theater. This fall she will be the Narrator/Singer in the University's production of *Side by Side by Sondheim*. Jean sang the role of the Mother in *Amahl and the Night Visitors* for 26 years with the Canton Symphony and toured for 15 years with the Kenley Players, performing roles such as Sister Berthe (*The Sound of Music*), Maud Dunlop (*The Music Man*), Irish Landlady (*Show Boat*) and the Innkeeper's Wife (*The Man of La Mancha*). She has appeared in eight shows at Weathervane and can say, unequivocally, that her favorites were *The Little Review* and *Tomfoolery*. Jean is soprano soloist at the Episcopal Church of Our Saviour and dedicates her performances to fellow church member and friend, the late Cue Fleming.

**CHRISTINE GINGERICH** (Sister Sophia) is a 2005 graduate of Malone College, where she earned a Bachelor of Science degree in Music Education. Christine's previous acting endeavors include *Fiddler on the Roof* (Grandma Zeitel), *Two Precious Maidens Ridiculed* (Gorbia), *Titanic*, *Gilligan's Island* (Mary Ann), *Our Town* (Mrs. Gibbs) and *Cinderella*. She also performed for a year with Malone College's traveling drama team, the Chancel Players. She is a member of the dance team and the drama team at her church. She thanks the Master Artist



## Cast Callboard Continued

for all His blessings, her beloved family for their support, and her friends who have shown her how to passionately pursue life!

**SARAH ELAINE BAILEY** (Sister Margaretta) played Sister Mary Amnesia in our production of *Nunsense* and has served as director/choreographer for *Joseph...Dreamcoat* for three productions and will direct *Madeline's Rescue* this summer. She received a Bachelor of Music degree from Ohio Northern University and her Master's of Music and Pedagogy degree from Westminster Choir College in Princeton, NJ. She sang at Carnegie Hall with the New York Philharmonic and was a grand finalist at the Guangdong International Vocal Competition in China. She also performed at the famed Edinburgh Fringe Festival. Her biggest role is as mother to two daughters, Isabelle and Sophia, and wife to handsome husband, Kyle.

**A. SUZANNE HIRSCH** (Nun) is a teacher with the Hudson City School District and is an active choir member and worship team member at The Chapel. She has Bachelors and Masters degrees in Education from The University of Akron. In high school she received the Drama Award and the Gold Key Art Award. She and husband Bradford have three children, Brett, Blaze, and Brian, who all love to visit relatives in Hawaii and Las Vegas.

**DANIELLE DENISE** (Frau Schmidt/Nun) has appeared at the Elkins Theater, (WV), as Philia in *A Funny Thing Happened on the Way to the Forum* and as Sister in *Damn Yankees*. For two years she sang with the Elkins Madrigal Choir. She was a member of the chorus and a dancer in *Annie Get Your Gun* at the Valdosta Theater (GA), where she was also a member of the award-winning Valdosta Singers. In Wheeling (WV) she sang with the Jesuit Choir for a year. She is an Incentive Administrator for FirstMerit.

**JENNIFER KLIKA** (Siste Berthe) is a homemaker and children's choir director for Trinity United Church of Christ in Wadsworth. She has a Bachelor of Science degree in biology from The University of Akron, a Master of Science degree in Microbiology from The Ohio State University and a Master of Arts degree in secondary education from Kent State University. She lives in Cuyahoga Falls with husband Ken

and their two children, Kate, 6, and Jill, 3. She sends much love and thanks them for their support and encouragement.

**BONNIE Z. JEWELL** (Nun/Company) has been office manager for Faith Lutheran Church/Lutheran Campus Ministries in Kent since 1984. She and her husband Dean and their children, Zackary, 15, and Steffanie, 13, love to travel in spite of a few mishaps along the way. They also enjoy biking and hiking through the CVNRA. She has sung with the Akron Symphony Chorus and Sweet Adelines of Kent and is involved in her church with choir and praise team, as a soloist and with children's ministries. She worked backstage and fed the Weathervane cast of *Joseph* this past year when Zack was in the production.

**JERRY DORTON** (Franz) played Lt. Rooney in our production of *Arsenic and Old Lace*. He previously played *Arsenic's* Dr. Einstein at Cuyahoga Falls High School. He appeared in *Don't Dress for Dinner* for Stow Players and has directed six productions for Kimpton Middle School where he is a seventh grade science teacher. A graduate of Crown College in Minnesota, he has a Master of Art degree in Education from Kent State University. He was named an outstanding educator in *Who's Who of American Teachers*. He and wife Alison have three children, Amanda, 13, Jonas, 9 and Isaac, 6.

**DAVID P. MYERS** (Herr Zeller/Admiral) is completing his 12th year of teaching at Cuyahoga Valley Christian Academy (CVCA), where he is the assistant varsity men's soccer coach. He has been involved in theater since his teen years in high school. He has most recently been seen on the stage at Weathervane Playhouse as Tom Joad in *The Grapes of Wrath*. He was also Dr. Einstein in Weathervane's production of *Arsenic and Old Lace*.

**STEVE SHANNON** (Ensemble/Herr Zeller Understudy) is an eighth grade math teacher in the Stow-Munroe Falls Schools. He has a BA degree in Communications/Mass Media/Broadcasting and a BS degree in Education, both from The University of Akron. He is the high school softball and eighth grade basketball coach for Mogadore City Schools. He and his wife Leslie were married in 2005 in Las Vegas and expect their first child in October.



## Backstage Callboard

**JERRY A. MIRMAN, JR.** (Stage Manager/ Baron) has been active in local theater for the past 20 years. At Weathervane he has appeared on stage in *The Adding Machine*, *Major Barbara*, *A Cry of Players*, *Man of La Mancha* and *1776*. He has been very active behind the scenes at Weathervane, last season stage managing *Tale of the Allergist's Wife* and serving as an Assistant Stage Manager for *Noises Off*. This year Jerry has stage-managed *Over the River and Through the Woods*, designed lights for the production of *Lend Me a Tenor*, and designed sound for *Crowns*. He also has been involved back stage on every other main stage production this season, as well as serving on our production board. He looks forward to stepping back on stage with an acting role in the near future. When not living at the theater, Jerry is a police, fire and 911 dispatcher with Copley Township.

**DANIELLE M. RUSEN** (Properties Designer) will be a freshman at the College of Wooster, where she will study French with minors in English and Education. This year she was director/producer of *Grease* for the Copley Student Independent Theater Company. She worked on her 18th show at Weathervane when she stage managed last year's production of *Joseph*. Her time spent at Weathervane and other organizations has allowed her to be named one of the top five volunteers in her age group in northeast Ohio.

**ALISON COOPER** (Assistant Stage Manager) was properties co-designer for our recent production of *Wait until Dark* and was on light and props crews for *Much Ado about Nothing*. She was on the props crew for *Over the River and Through the Woods* and *Lend Me a Tenor*. She has received her GED, enjoys writing, concerts and reading and working at Weathervane!

**STEPHANIE KOHL** (Assistant Stage Manager) is thrilled to be working on this fabulous production. A recent Ashland University graduate, some favorite stage management credits include *The Who's Tommy*, *Wonderful Town* and Disney's *Beauty & the Beast*. Stephanie is looking forward to her next production, her upcoming wedding to actor Colin Cook. This fall, she will be working in Philadelphia at the oldest theater in America, The Walnut Street Theatre.

**JENNIFER FARRIS** (Lighting Co-Designer) is new to Weathervane. She's been technical director for *Anna in the Tropics* for Ensemble Theatre; a member of the running crew for *Plaid Tidings* and *Crowns* for Cleveland Play House; and a master carpenter for *Tommy* at Stagecrafters Theatre and for *Godspell* at Ashland University. She has a Bachelor of Science degree in theater education from Ashland University, where she was a member of Alpha Psi Omega.

**BECCA CARTER** (Lighting Co-Designer) is a graduate of Firestone High School. She was lighting designer for Weathervane's *Crucible*. Her previous work includes *Just Passing Thru*, *The Man Who Came to Dinner*, *Annie Get Your Gun*, *The Wiz*, *Fiddler on the Roof* and *Gypsy*.

**CASEY JONES** (Sound Designer) has worked at WCP before for the AIDS benefit productions of *Forever Plaid* and *Nunsense A-Men!*, but this is his first regular-season production. Favorite productions elsewhere include *Rags* (JCC), *Lies and Legends* (Beck Center), *Beast of the Moon* (Dobama), *Ragtime* (JCC) and *Black Nativity* (Karamu).

**THE COSTUME COMMITTEE**  
Collectively, this committee represents **182 years** of costuming for Weathervane Community Playhouse!



## Production Team Members & Crews

**Alan Scott Ferrall -- Technical Director**

Kathy Kohl -- Assistant Technical Director

### SET CONSTRUCTION

Ruth Richardson ✓	Charles Korecki ✓
Tom Marshall ✓	<u>Jen Korecki</u>
Erin Katz ✓	Lauri Agins ✓
Kevin Ford ✓	John Keller ✓
Todd Dieringer ✓	John Hujar ✓
Kristopher Sperry ✓	Pat Gaffney ✓
Justyn Jaymes ✓	Judy Willemsen ✓
Jan Durfee ✓	

### PROPERTIES

Tracy Jackson	Jessie Hale
Andrew White	Kelly Hale
John Zido	Brittany Shemuga
Ian Bolden	Nikki Rafferty
Ashley Zampelli	Tom Abdoo
Katie Jeter	Pat Nuzum
Linda Hale	

### COSTUMES

<b>Henrietta Cook -- Chair</b> ✓	
Janet Heilmeier ✓	Jasen Smith ✓
Betty Williams ✓	Suzanne Hirsch ✓
Dorothy Kies ✓	Connie Bair ✓
Connie Velotta ✓	Susie Stech ✓
Randie Sass ✓	Leah Sass ✓
Christine Schueneman ✓	Kevin Minster ✓
Karen Burrige ✓	
Ethel Soudry ✓	

### LIGHTS

Brian Jackson	Leah Magnus
Jack Gatti	Dana Schweiger
Laura Cordle	Caroline Amer
Rosylin Jentner	Andy Gatti
Joe Levack	

### SOUND

Spencer Burke	Scott Shaw
Richard Worswick	

### ACKNOWLEDGMENTS

**Bill Van Nostran** -- Publicity Volunteer  
**RENTWEAR** of North Canton  
**B. BERGER** Fine Fabrics & Wallcoverings

**Glen A. Williams**  
**Father Karg & St. Sebastian**  
**Catholic Church**

### Thanks to Our Hard-Working Volunteers

The following are the vivacious volunteers who assisted you in many ways including hostessing, house managing and/or staffing the boutique, concession stand and office during *Wait until Dark*.

Meena & Puru Agrawal	Thelma Coss	Pat Obenour	Barbara Trotter
Susan Baker	John Cotter	Barbara O'Connor	Connie Velotta
Nora Barner	Margaret Dietz	John O'Neill	Linda Waite
Patrice Bechtol	Helen Fleming	Marci Paolucci	Betty Watterson
Joyce Bigam	Janis Gallagher	Jean Questel	Betty Williams
Connie Bowen	Marilyn Heagerty	Bess Raines	Marta Williger
Jan Budai	Linda Heath	Ruth Richardson	Mary & Mel Wolfman
Karen Burrige	Dave Hinebaugh	Randie & Brian Sass	Gen Woods
Len & Gail Cheslock	Leslie & Richard Lund	Lois Simmons	B.J. Zeigler
Henrietta Cook	Linda Mateen	Sue & Richard Smith	Nancy Zeigler
Wendy Cooley	Claudina Miller	Amy Snell	
Ralph Cooley	Amanda Montigney	Sue Snyder	

Memorial Contributions were made to  
Weathervane Playhouse  
in memory of **Ruth Eisenzimmer** by  
Helen Fleming  
Elynmarie Kazle & Mark A. Zimmerman

Memorial Contributions were made to  
Weathervane Playhouse  
in memory of **Patricia "Pat" Weill** by  
Helen Fleming  
Elynmarie Kazle & Mark A. Zimmerman

Memorial Contributions were made to  
Weathervane Playhouse  
in memory of **Chisna "Cue" Fleming** by  
Ann & David Brennan  
Bernie Konarski  
Elynmarie Kazle & Mark A. Zimmerman

Memorial Contributions were made to  
Weathervane Playhouse  
in memory of **Ross R. Murray** by  
Betty & Glen Williams



### *More Coming Events*



#### **Fat Men in Skirts** (In the John L. Dietz Theater)

A comedy by Nicky Silver -- In collaboration with *Just Life and Company*

**July 28 - August 6** Tickets \$12

*This play contains adult content and is not suitable for those who may be easily offended.*



#### **Pump Boys and Dinettes**

**August 28 and 29 at 7:30 p.m.**

A Rock 'n' Roll/Country/ Western/ Blues  
Musical Comedy to benefit both the  
Community AIDS Network and  
Weathervane Playhouse. Tickets: \$20

Join us after the show!



New Hours:  
Sunday - Thursday 11:00am - 10:00pm  
Friday & Saturday 11:00am - 11:00pm  
Closed on Mondays

See our ad on page one of this program.

### **Weathervane's Annual "Red Carpet" Event**

Come celebrate the events of the 2005-2006 season with a grand  
celebration to be held at the Playhouse. The event will be *Black  
Tie Optional* and features a grand buffet of heavy hors d'oeuvres,  
beverages, desserts, entertainment and awards!

**Annual Chanticleer Dinner and Awards**  
**August 19, 2006**



**Come for the  
history and  
take away an  
experience.**

A Magnificent Historic House Museum and Country Estate

714 North Portage Path • Akron  
330-836-5533  
[www.stanhywet.org](http://www.stanhywet.org)

**Stan  
Hywet**  
HALL & GARDENS

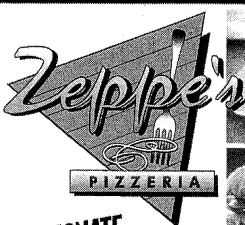
*Weathervane Playhouse  
thanks  
Tiffany's Bakery  
for the beautiful opening  
night cakes.*



**Wedding Cakes**

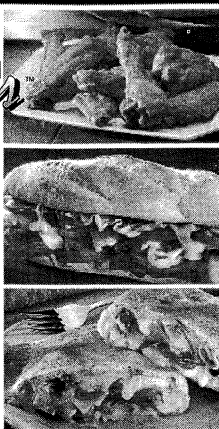
*Specializing in Birthday Cakes  
330-753-0017  
2176 Romig Road  
Akron, OH 44320*

**PIZZA PASTA SUBS SALADS  
WINGS CALZONES**



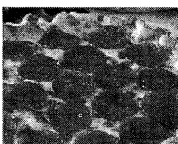
**PASSIONATE  
ABOUT PIZZA™**

Best wishes on your  
2005 season  
Zeppe's Pizzeria in The Valley  
1676 Merriman Road  
(330) 836-6000



**X-LARGE PIZZA**

**\$9<sup>99</sup>**



X-Large 12-cut  
Traditional Pizza  
with 1 Topping



CODE WP100 Not valid with any other offer. This coupon is available  
for pick-up or delivery at The Valley location only. Limited time only.

**Supporting inspirational performances  
delivered by exceptional people.**

[www.brunercox.com](http://www.brunercox.com)



At Bruner-Cox LLP, we believe the expertise,  
integrity and continuity of our people  
allow us to deliver innovative accounting  
and consulting solutions to every client  
relationship.

Experience the value of our people.

**BRUNER-COX LLP**

Business Consultants & Certified Public Accountants

**Our people. Your solution.**

AKRON & CANTON

An independently-owned member of the RSM McGladrey Network



**Greystone Hall & Catering**

**A fine dining experience for any event**

**Featuring the Captain's Lunch Tues. - Fri. 11:30 - 1:30 p.m.**

103 S. High Street

Downtown Akron

330-761-1950



Daily Delivery to Hudson and Surrounding Area  
European/Holland & Tropical fresh Cuts brought in Daily  
Gourmet Fruit Baskets, Goodie Baskets, Balloon Bouquets  
Custom Dried & Silk Arrangements for Home & Office  
Blooming Garden Baskets, Green Plants, Plush Animals

Monday - Saturday 9 - 7 • Sunday Noon - 6

330.650.1366 or 330.656.3676 or

800.795.1366

12 Clinton St. • Hudson • At First & Main

[www.thegreenhouseflorist.com](http://www.thegreenhouseflorist.com)

Gregg Lauck, Proprietor

**at Stinaff's  
the spotlight  
is on**



**Stinaff's**  
PRINTING FOR BUSINESS SINCE 1935

44 S. Summit St. • Akron, OH 44308  
330-434-2106 • Fax 330-434-9376

open daily all year



*encore!*

*some  
performances  
simply demand  
applause*

**Donzell's**

Greenhouses • Nursery • Garden Center • Landscape • Floral • Seasonal Design  
937 East Waterloo Rd • Akron • Ohio .330.724.0505



LaComini's  
SINCE 1932

Dinner before or after the show.

Minutes from

**Weathervane Playhouse  
Restaurant - Deli - Wine Shoppe  
Banquets - Catering**

1561 Akron-Peninsula Road

(330) 923-7999



## Volunteering at Weathervane

Weathervane began as a volunteer organization and continues its growth thanks to the time and talent that members of our community invest in it. Our on-stage performers have worked long and hard to earn your applause. But their work is supported by many other unseen men and women who've helped build and paint sets, run the lights and sound, make sure that properties and set dressing items are in their proper places and do other backstage labor from stage managing to costuming and make-up. Supporting those who are actively involved in putting on each show are still more volunteers who usher, house manage, sell tickets, keep our office running and serve on our Board of Trustees, Board committees, Production Board and Women's Board.

Their spirit is the backbone of our continuing operations, a valued support on which our professional staff relies.

Each month, we acknowledge the outstanding Volunteers of the Month in our lobby, but those volunteers represent all who commit their time and interest to create a great theater experience for everyone who's come to see this show.

If you have friends or relatives who volunteer generously at Weathervane, we hope you'll take a moment to thank them for their help and their support of the cultural enrichment of our community. Better yet, join them! Call us and we'll help you win your own share of the applause for a "jolly good show," an experience that offers unique challenges with every performance.

### Share the Annual Chanticleer Celebration

**Let's talk Chanticleer!** Shortly after the final production of each season (August 19, 2006), Weathervane volunteers, subscribers and friends share an exciting awards banquet and party to acknowledge outstanding performances by performers and technical volunteers. And, if you have seen all of the six main-stage productions, you are eligible to be a judge!

The top performers are awarded rooster statuettes -- Chanticleers -- in recognition of their work, as voted by Chanticleer "judges." It's a great night to get together, share hopes, fun and festivities and is open to all.

Awards are presented for outstanding lead performances by a male or female in a drama or comedy, outstanding support performances, and outstanding lead and support in a musical, as well as choices in technical achievement. Chanticleers are also awarded for properties, lights, costumes and sound design, plus best production of the season. In addition to performance and production awards, the event also recognizes the Top 25 outstanding volunteers of the season. We welcome you to take part in the biggest nail-biting party of the year. Make sure to pick up your ballot at the end of the season and join us!



Supporting Our Community Through  
Education, Research, Service.

[www.neoucom.edu](http://www.neoucom.edu)



## Volunteer Responsibilities

*Here's a quick introduction to the responsibilities volunteers undertake to make our shows work. If you'd like to try your hand at any of these jobs, please call us. We'll help you learn! Volunteers with 100 hours or more of service are eligible for a special Weathervane membership!*

**\* Stage Management** Duties include assisting the director throughout the rehearsal period, calling cues, keeping backstage safe and orderly, and coordinating the technical needs of the show with the actors. A great opportunity for those who enjoy planning, communicating and taking charge. Once the director's work is done, it's the Stage Manager who runs each performance.

**\* Set Construction** Use your building skills, carpentry or painting techniques to help make illusion come to life. Help is needed days and evenings.

**\* Costumes** Designers and workers are vital. We invite skilled and unskilled seamstresses to make or alter costumes, create patterns, care for costumes during a show and keep our wardrobe department organized.

**\* Lighting** Experience is a plus, but you can learn by assisting others who know computers and electrical requirements. We'll train eager volunteers to help hang, focus and add color to lighting instruments. We'll also teach you how to run the light board and follow spots. *Nobody can see the show without you.*

**\* Sound** Create the music and sound effects tapes that enrich the aural envi-

ronment for each show or add "live" backstage sound. Run the sound system for technical rehearsals and productions.

**\* Properties** All the items that help "dress" a set and all those used by actors in rehearsal and performance (from tea sandwiches to "deadly" weapons and "shattering" windowpanes) must be borrowed, built or cooked. Many volunteers are needed to work on each performance.

**\* Office Volunteer** If you enjoy dealing with the public, we can use your help during office hours and on show nights to assist in taking money and answering the phone to take reservations. You may also help with mailings, work with staff, and greet customers and visitors.

**\* Ushering** Welcome audience members with your smile, show them to their seats, pass out programs, and serve refreshments at intermission. Your help is always welcome.

**\* House Manager** This representative greets the audience, tears tickets and guides theater-goers to ushers for seating. You'll work with the stage manager to coordinate the timing of intermissions and remain in the lobby throughout the show to handle any emergency.

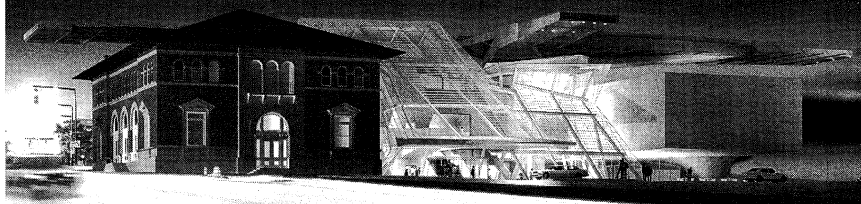
## Weathervane Community Playhouse

is a proud member of



Ohio  
Community  
Theatre  
Association

## The New Akron Art Museum



Coming Soon **Akron  
Art  
Museum**

330. 376. 9185  
www.akronartmuseum.org



Lawrence School students come from over 9 counties and 60 communities...  
*including yours.*

*Lawrence School is a college preparatory day school serving bright students in Grades 1-12 with learning disabilities and attention deficits*



**LAWRENCE SCHOOL**

1551 E. Wallings Road in Broadview Heights  
www.lawrenceschool.org 440-526-0717

COMING 2007: Lawrence Upper School (grades 7-12) moves to Sagamore Hills



# Luigi's

"An Akron Tradition Since 1949"

- Award Winning Food
- Casual Dining
- Old World Elegance

Featuring Our Famous  
Homemade

- Pizza
- Lasagna
- Antipasto

**OPEN 7 DAYS**  
105 N. MAIN ST.  
**330-253-2999**

# Vacations Made Easy!

Looking to get away from it all? AAA Travel has a variety of romantic cruises and an endless selection of trips to exotic destinations around the world! No matter the occasion, we'll find a vacation package that fits your every need. And if you have a question, we're just a phone call away. Give AAA Travel a call today, or look us up on the web at [www.aaa.com](http://www.aaa.com)!



**Akron Auto Club**

Travel With Someone You Trust.®

**Downtown**  
330.762.0631

**Hudson/Hudson Plaza**  
330.650.6727

**Fairlawn Town Centre**  
330.867.0694

**Cuyahoga Falls**  
330.923.4826

**Ellet/Eastgate Plaza**  
330.798.0166



[www.aaa.com](http://www.aaa.com)



## Who Gets On Stage?

Our volunteer performers come from throughout greater Akron and northeastern Ohio. They've committed themselves to four or more weeks of rehearsals plus performances. Their greatest reward is your applause.

Many performers come with substantial theatrical experience. Others are new to the stage. Auditions are open to all and our non-traditional casting policy opens the way for many performance opportunities. Except in cases where race, gender, age or disability is essential to the play, all roles are cast on the basis of talent.

Local newspapers carry audition dates and times or call Weathervane at 330-836-2626 to be added to the audition mailing list. Some directors prefer to set appointments for audition times and may ask that you come prepared with a brief

monologue, improvisational subject or musical number. Copies of plays scheduled or audition scenes are often available for a nominal deposit.

When you arrive at the theater on audition nights, you'll learn about the rehearsal and performance schedule. You may also register as a production volunteer if you're interested in learning about the technical opportunities in the show.

You may be asked to return for callbacks and will be notified of the director's cast selection as soon as possible. Please note that if you don't win the role you've wanted so badly, it may not necessarily reflect on your talent. The director's choice of cast members must take many factors into account to develop the proper "relationships," style and reality of the ensemble. Don't be discouraged.

### Beware of the Dreaded No-Show

Have you ever seen empty seats at a *sold out* sporting event or concert? Weathervane has the same problem. Subscribers who may have exchanged from another performance wonder why they weren't given those prime empty seats for the evening.

When you buy a subscription, you are *promising* to come to the theater for that ticketed performance and we hold your seat(s). This makes it impossible to tell if a performance is ever really *sold out* and annoys other ticket buyers who see that they could have been seated in a better spot.

*Subscribers: Please call the Ticket Office at 836-2626 if you will not make your ticketed performance. Thank you.*

### Weathervane Traditions

**Meet the cast** Many cast members spend a few minutes in the lobby area to meet and greet friends after performances. It's your chance to thank them for their performance.

**Intermission Tea** is served with our compliments by our volunteers. Soft drinks are available at a nominal cost.

**Opening Night Receptions** welcome audiences on Main Stage first Friday performances. We provide light refreshments after the show so you can share in the celebration.

**For your sweet tooth** snacks are available for purchase before the show and during intermission. Refreshments (other than water) are not permitted in the auditorium.



## Theatre Education

### Youth Education

Weathervane offers professionally taught classes in acting, stagecraft, musical theatre and improvisation for children up to age 18. Fall and spring classes are held on Saturdays and two-week Hands on Theatre (H.O.T.) workshops are planned throughout the summer. The cost is minimal with a limited number of scholarships available and discounted fees for Weathervane members.

Children may also audition for roles in many productions. Casting is not dependent upon class enrollment. Participation is an extension of valuable training in every facet of production from the audition process to technical and performance experience. Family members may also have learning opportunities by participating in such productions.

Weathervane works with area schools by providing outreach information and study guides as part of our Project STAGE© program, which brings public and private school students to see as many as five productions each season. This season, *Much Ado about Nothing*, *Crowns*

and *Antigone* will be featured in the Project STAGE© events. Tickets are \$8.

For information about classes or audition schedules for Youth Productions, please call our Director of Education at 330-836-2323.

### Adult Classes

Professionally taught adult theatre classes have included classical drama, improvisation, scenic design, stage lighting and directing. These classes help actors expand their performance and public speaking skills. Look for new schedules for classes periodically.

### Learning On the Job

Every production participant becomes part of Weathervane's continuing education process. You'll learn from more experienced volunteers who share the creation of production and performance. If you don't have time for structured classes, sign on to become a crew member or performer. We'll help you expand your knowledge of backstage and onstage responsibilities.



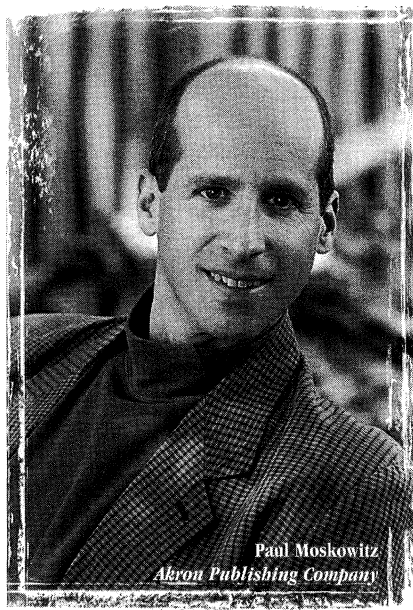
## The Pathway to Quality Education

Preschool through Grade Eight

2315 Ira Road in Bath, Ohio near Hale Farm 330-666-1118 Visit our Web site at [www.oldtrail.org](http://www.oldtrail.org)



# Why is this man smiling?



*Because his customers are too.*

If you haven't been smiling lately, please call Akron Publishing Company for your next graphic design or custom publishing project. We design and produce advertising, brochures, direct mail pieces, customized magazines, catalogs, books and more. Give us a try ... you'll be *happy* you did.

**AKRON**  
PUBLISHING COMPANY

phone: 330.929.2703 ▲ fax: 330.923.0856

[www.akronpublishing.com](http://www.akronpublishing.com)  
[www.everythingakron.com](http://www.everythingakron.com)

*A really good custom publishing and graphic design firm.*

## The perfect blend of skill, talent and collaboration.



At KeyBank, we're proud to support the Weathervane Playhouse in it's display of skill and talent. And we're proud to pool our skills to bring you financial services that support your talents.

**KeyBank**

**1.800.KEY2YOU®**

**Key.com**

---

**Achieve anything.**

Key.com is a service mark of KeyCorp.

CELEBRATING

**40 Years**

*Ohio Arts Council*

**1965 - 2005**

40 Years of Strengthening Ohio Communities  
Culturally, Educationally and Economically.

727 East Main Street  
Columbus, OH 43205-1796  
614/466-2613  
www.oac.state.oh.us

Be in the know by visiting

**ArtsinOhio.com**

For thousands of performances and events, festivals and exhibitions that are sure to move you, visit ArtsinOhio.com—an easy to use website that allows you to search by location, interests, dates and more.

*Have Your Wedding on*

**BROADWAY**

**WEDDING RECEPTIONS**

Starting at **\*\$25.00 pp+**

\*Price does not include Bar service, tax or service charge. Prices subject to change.

**HOTEL ACCOMMODATIONS**

**CROWNE PLAZA**  
HOTELS • RESORTS

**HISTORIC QUAKER SQUARE • DOWNTOWN AKRON**  
**135 SOUTH BROADWAY • AKRON, OHIO 44308**  
**(330) 253-5970 • www.quakersquare.com**

Quaker Station

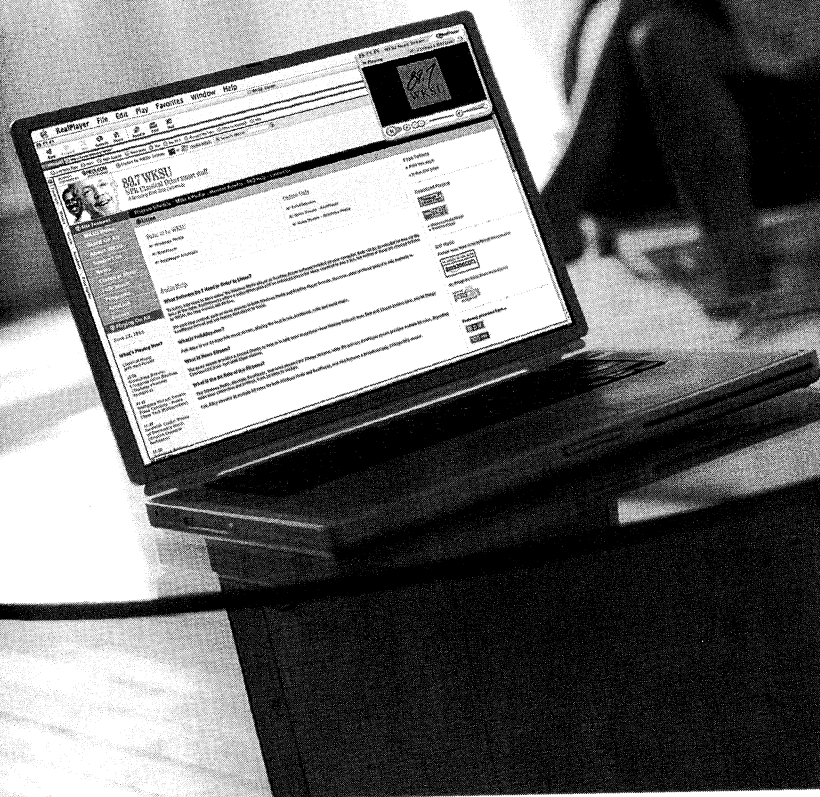
*Grand*  
**IDEAS**

**MINX** DESIGN

330.762.4126 • 1.888.GET.MINX

Fresh Solutions for Print Communication

Norwalk, Ohio. 2:13 p.m. *Michelle Vocaire listens to classical music.*



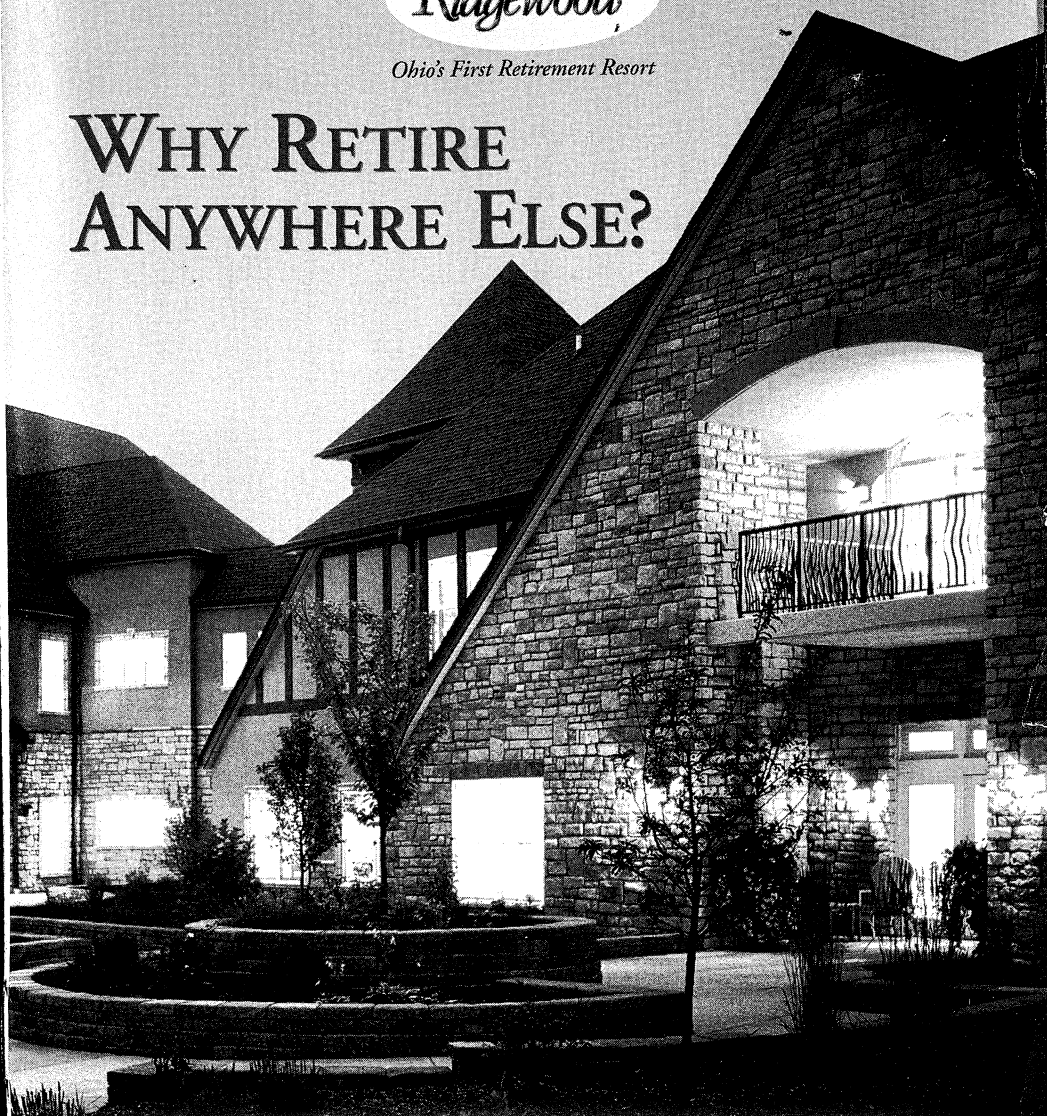
NPR. Classical. Other smart stuff. **89.7 WKSU**  
*A Service of Kent State University*

Akron, Ohio

SUMNER ON  
**Ridgewood**

*Ohio's First Retirement Resort*

## WHY RETIRE ANYWHERE ELSE?



**G**ood News! You no longer need to move to Florida or Arizona to enjoy a great retirement lifestyle! Sumner on Ridgewood, in Copley Township, has recently been certified as Ohio's first *Retirement Resort* - in recognition of the active retirement amenities (like indoor swimming pool & fitness center) and supportive healthcare services, all beautifully situated on a 64-acre campus. Bring a friend and let us treat you to a free luncheon and a grand tour - a free 2-hour "vacation" for you to enjoy!

*Call today to reserve your spot at an upcoming Taste & Tour of Sumner on Ridgewood.*

**330-664-1283** (Ref. #510L)

