

The perfect blend of skill,  
talent and collaboration.



At KeyBank, we're proud to support the the Weathervane Playhouse in it's display of skill and talent. And we're proud to pool our skills to bring you financial services that support your talents.



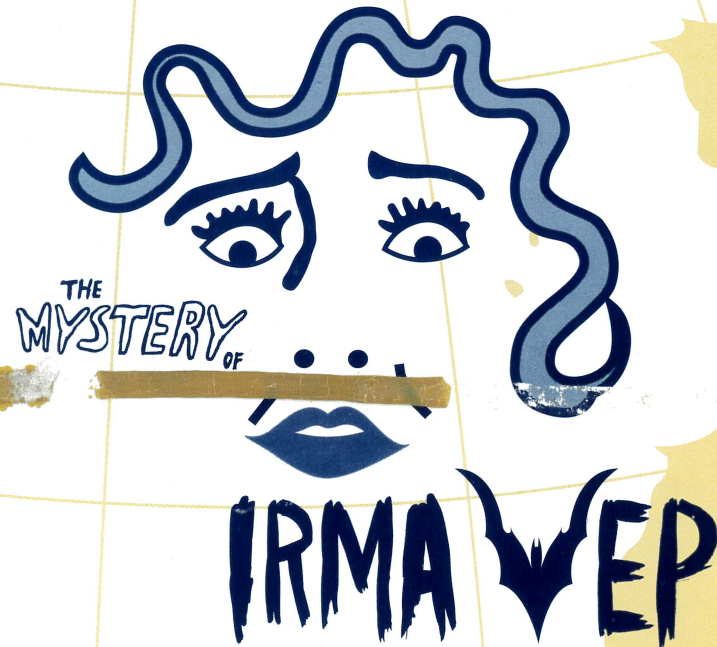
1.800.KEY2YOU®  
Key.com

**Achieve anything.**

Key.com is a service mark of KeyCorp.

*Drea Brann*  
**WEATHERVANE COMMUNITY PLAYHOUSE**  
*Nata Serus Mez*  
*Where Theater Comes Alive!*

**2003-2004**  
Sixty-Ninth Season



*By Charles Ludlam*

production no. 505

M A I N S T A G E

**Januray 14 - February 1, 2004**



# Give yourself a hand!

For supporting the arts in Northeast Ohio

If not for you,  
these performers would be playing  
to an empty house.

The arts serve many millions of people every year, contribute well over a billion dollars to the economy, and employ hundreds of thousands of creative and technical workers. Approximately a thousand people are employed in the arts in Akron alone!

Consider the benefits of involvement in the arts: Those involved in music training or music appreciation score higher in verbal and math tests, and training in music contributes to self-satisfaction and success in later life. Theater, music, dance, and visual arts programs can act to connect diverse segments of a community by providing education and encouraging dialogue, thus promoting understanding. People exposed to the arts throughout their lives read more, perform more community service, and vote more often than those who do not participate in the arts.

Thank you for supporting the arts. Thank you for helping to make your community a better place to live.



**Audio-Technica U.S., Inc., Stow, Ohio**

Audio and video products for home and professional use.

[www.audio-technica.com](http://www.audio-technica.com)

Copyright ©2003 Audio-Technica U.S., Inc. and its licensors. All rights reserved.



## THE HAGEN ROWLAND GROUP

FINANCIAL CONSULTANTS



*Producing financial  
performance, professional  
and personal.*

**BRUCE ROWLAND**  
INVESTMENTS • INSURANCE

330.836.9245

Fax: 330.836.6114

E-Mail: [browland@ameritech.net](mailto:browland@ameritech.net)

Securities Offered Through:  
WRP INVESTMENTS, INC.  
MEMBER: NASD, SIPC





2003-2004 The 69th Season

### Weathervane Community Playhouse

1301 Weathervane Lane, Akron, OH 44313-5186

330-836-2626 ♦ Fax 300-873-2150 ♦ wcpakron@aol.com ♦ www.weathervaneplayhouse.com

#### **Charlie and the Chocolate Factory**

by Richard R. George, Novel by Roald Dahl  
July 26 - Aug. 10, 2003 (\*YT)

#### **My Way**

A Musical Tribute to Frank Sinatra  
Compiled by David Grapes and Todd Olson  
September 10 - October 5, 2003

#### **Proof**

by David Auburn  
October 15 - November 2, 2003

#### **Joseph**

and the Amazing Technicolor Dreamcoat  
by Tim Rice and Andrew Lloyd Webber  
Nov. 22 - Dec. 21, 2003 (\*YT)

#### **The Mystery of Irma Vep**

by Charles Ludlam  
January 14 - February 1, 2004

#### **The Crucible**

by Arthur Miller  
February 14 - 28, 2004 (\*YT)

#### **A Lesson Before Dying**

by Romulus Linney, Novel by Ernest Gaines  
March 10 - 28, 2004

#### **The Dinner Party**

by Neil Simon  
April 14 - May 9, 2004

#### **Pinocchio**

Performed by the Piper Puppets  
presented by WCP Women's Board  
May 8, 2004 (\*YT)

#### **Nunsense**

by Dan Goggin  
June 9 - July 3, 2004

\*Youth/Family Production

### Patron Information

\* **Emergency Exits** located at the left front of the auditorium and left side of the lobby. Front door and lobby doors will also be used.

\* **Restrooms** Located in lobby alcove - wheelchair accessible.

\* **Handicapped Services** Seating for a limited number of wheelchairs. Please notify in advance if needed.

\* **Assistive Listening Devices** Available thanks to the generosity of Virginia and J. Robert Wilson.

\* **Patrons:** Expecting a call? Leave name and seat number with the House Manager. Please turn off your cell phones, pagers and audible watches.

\* **Beverages and Food** may not be taken into the auditorium during performances.

\* **Use of Cameras and Recording Devices** is prohibited during performances.

\* **Curtain time** Wed./Thurs. - 7:30 p.m., Fri./Sat. - 8 p.m. and Sun. - 2:30 p.m.

\* **Latecomers** will be seated at the rear of the auditorium during a suitable break in the play if space is available and may take their reserved seats after intermission.

\* **Exiting the Theater** Please remain seated until the auditorium lights are on. Parking lot illumination assures that getting to your car will be easy and secure.

\* **Smoking** is permitted outside the building.

\* **Lost and Found** items will be held at the Ticket Office until claimed.

\* **Comments** from audience members are always welcomed with interest. Please feel free to write to Weathervane to express your views and opinions about our productions. Send your comments to: *Executive Director, Weathervane Community Playhouse.*



Patron

Generosity

Weathervane appreciates the continuing strong support of individuals, corporations, foundations and other donors who help finance the theater's operations, capital improvements and endowment program. Weathervane is classified as a 501(c)(3) organization and contributions are tax deductible. Following are some of the many ways in which you can take pride in your support of the art of theater in our community.

#### \* **Become a Weathervane Member**

Your annual support makes you a voting member of Weathervane Community Playhouse. You'll receive discounts on educational programs and other benefits, based on the membership level you choose. Members are invited to Weathervane's annual meeting and to other special events. Memberships are renewable annually, beginning at \$75 (Contributing), and continuing at Sustaining, Patron, Silver, Gold, Platinum and Diamond Levels. Membership is actively solicited in the fall but is accepted at any time. Members are recognized in the Playbill.

#### \* **Give a Special Gift To Say You Care**

Special donations may be made at any time to memorialize a friend or relative whose interest in Weathervane was significant to his or her life. You may also recognize and celebrate important dates or current achievements of relatives, friends or associates.

#### \* **Remember Weathervane in Your Will**

What better way to carry on your tradition of support to Weathervane than by a planned gift. By taking advantage of the tax laws which encourage charitable giving, the U.S. Government will share in the cost of your gift to Weathervane. Your gift can fulfill a specific purpose or project while providing your estate with tax savings. To help ensure that Weathervane will continue, please contact our Executive Director for more information.

#### \* **Check For Matching Gifts**

Many national and local corporations will

match your donations to Weathervane, increasing your generosity to the theater. Please check whether or not your company participates in such a program.

#### \* **Designate Gifts To Local Foundations**

Several of this area's larger foundations accept memorial and tribute gifts in the name of specific organizations such as Weathervane Community Playhouse. Such gifts help assure continuing grants to the theater's operations and special projects. We are enormously grateful for the impressive history of foundation support in this community.

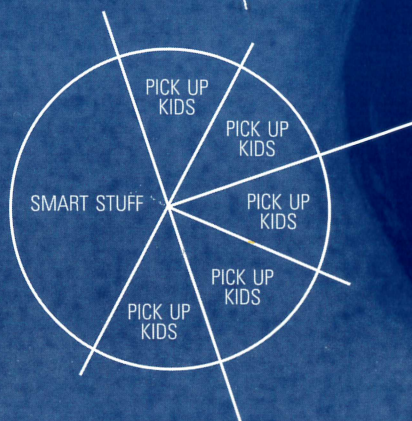
#### \* **Sponsor or Underwrite a Production**

Our productions may be underwritten by local corporations or foundations. Benefits can include private "command performances" and special receptions for employees and friends when your business chooses this important method of support. Please call 330-836-2626. We'd like to discuss this kind of opportunity with you.

#### \* **Capital Project**

The construction segment of the Capital Project included a scene shop with basement storage, a 2nd-floor classroom and rehearsal hall, soundproof production booth, elevator and fly gallery pocket above the stage and installation of the rigging system for the fly gallery. Donations for Stage Two of the project continue to purchase classroom furnishings, update the lighting system, renovate the lobby and replenish the Capital Fund for maintenance and repairs.





NPR. Classical.  
Other smart stuff.  
89.7 WKSU

*A Service of Kent State University*

Akron-Canton's  
only  
television  
newscast  
is here!

Watch Your  
Newscast  
Weeknights  
at 6:30

Proud sponsor of  
Weathervane  
Community Playhouse

**PAX23**  
news



ERIC MANSFIELD  
anchors Akron-Canton news



MARK NOLAN  
forecasts Akron-Canton weather



JIM DONOVAN  
covers Akron-Canton sports





## History From the Barn to the Valley



From 1935 until 1951, Weathervane was housed in a modest carriage house barn on Marshall Avenue. Some recall its cramped quarters but especially the energy and devotion of four ladies, Grace Hower Crawford, Laurine Schwan, Helen Troesch and Muriel MacLachlan, who believed that Akron deserved the best in theater and that volunteers could make it happen. A lobby plaque lists the names of other founders who shared their commitment. The rooftop weathervane gave the theater its name and logotype character, the Chanticleer.

In 1951, the organization renovated a building on Copley Road and, from 1960 - 1992, Bob Belfance served as director. Along with custodian/ticket office manag-

er, Nora Scott, the two-person staff relied on volunteer support. Paid guest directors and children's theater instructors served in part-time positions. Ticket receipts and donations helped meet expenses and created a modest endowment. A fund-raising drive resulted in construction of the present 263-seat facility which opened in 1970. Thanks to Grace Crawford's legacy, the mortgage has been paid off.

Construction made possible by the most recent Capital Campaign added classrooms, rehearsal space, scene shop, additional prop storage, elevator, library, fly gallery and fly system, a sound-proof production booth and a costume workshop.

Weathervane celebrated its 500th Mainstage production, *The Laramie Project*, during the 2002-2003 season. Thanks for being a part of our history.



## Theater Education

### Youth Education

Weathervane offers professionally taught classes in acting, stagecraft, musical theatre and improvisation for children up to age 18. Fall and spring classes are held on Saturdays and two-week **Hands on Theater (H.O.T.)** workshops are planned throughout the summer. The cost is minimal with a limited number of scholarships available and discounted fees for Weathervane members.

Children may also audition for roles in many productions. Casting is not dependent upon class enrollment. Participation is an extension of valuable training in every facet of production from the audition process to technical and performance experience. Family members may also have learning opportunities by participating in such productions.

Weathervane works with area schools by providing outreach information and study guides as part of our **Project STAGE** program, which brings public and private school students to see as many as five productions each season. This season, *Proof*, *The Crucible* and *A Lesson*

*Before Dying* will be featured in the **Project STAGE** events. Tickets are only \$8.

For information about classes or audition schedules for Youth Productions, please call our Education Coordinator at 330-836-2323.

### Adult Classes

Professionally taught Adult Theatre classes include Classical Drama, Improvisation, Scenic Design, Stage Lighting and Directing. These classes help actors expand their performance and public speaking skills.

### Learning On the Job

Every production participant becomes part of Weathervane's continuing education process. You'll learn from more experienced volunteers who share the creation of production and performance. If you don't have time for structured classes, sign on to become a crew member or performer. We'll help you expand your knowledge of backstage and onstage responsibilities.



## Reserve: A Great Place to Be ... an exceptional place to learn

### WESTERN RESERVE ACADEMY

Open House  
Saturday,  
Nov. 8, 2003 &  
April 24, 2004

Visit classes, tour the campus and meet faculty and students. Families and prospective students of all ages welcome.

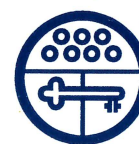
Check in between  
8:45 a.m. and 11:00 a.m.  
John D. Ong Library  
College Street Entrance



Featured in U.S. News  
& World Report

For further information: Visit Reserve  
at [www.wra.net](http://www.wra.net) or call 330.650.9717

**WESTERN RESERVE ACADEMY**  
Hudson, Ohio 44236 • Day and Boarding 9-12



## Old Trail School

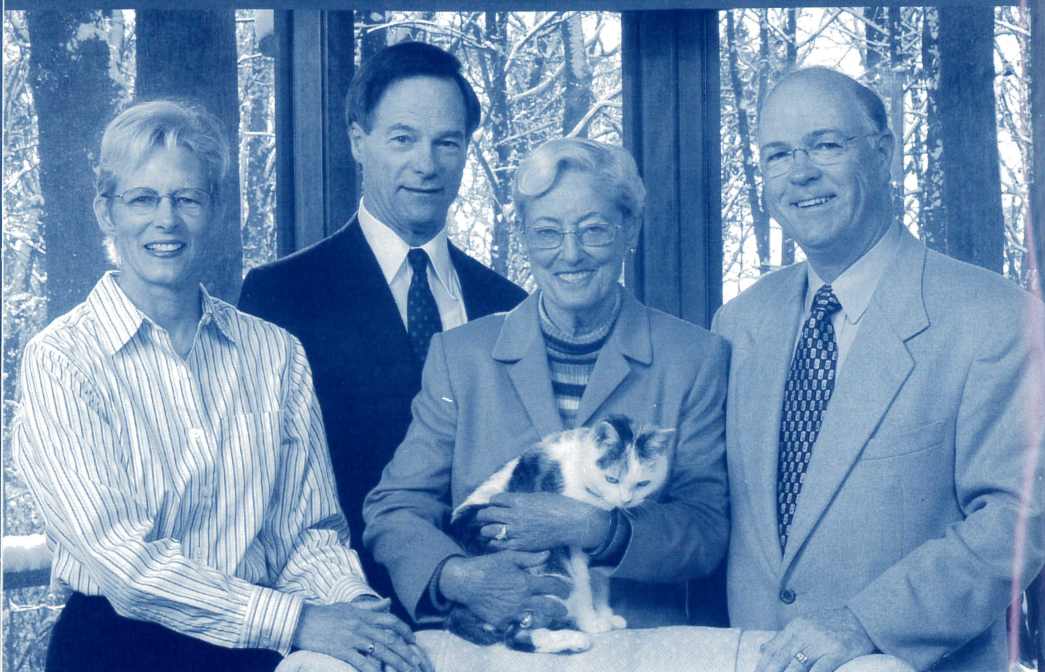
## The Pathway to Quality Education

Preschool through Grade Eight

2315 Ira Road in Bath, Ohio near Hale Farm 330-666-1118 Visit our Web site at [www.oldtrail.org](http://www.oldtrail.org)







## Generations of Giving.

*The McDowell family's generosity and vision has transcended generations, establishing a permanent and living legacy for The University of Akron.*

*From left to right:  
Peggy McDowell Lloyd, C. Blake McDowell, III,  
Beatrice McDowell (with her cat, Tammy),  
Philip A. Lloyd, '72*

You can create an enduring legacy through a bequest to The University of Akron.

A gift through your Will or Trust helps students and provides lasting recognition for your family for generations.

To structure a charitable bequest that ensures the greatest tax results for your estate and celebrates your support of The University of Akron, please call:

David P. Horn  
Director of Planned Giving  
The University of Akron  
330-972-6870  
or e-mail: [dhorn@uakron.edu](mailto:dhorn@uakron.edu)

**The University of Akron**

The University of Akron is an Equal Education and Employment Institution

THE POWER OF

# THE ARTS

FIRSTENERGY RECOGNIZES THE POWER OF THE ARTS AND ITS ABILITY TO ENHANCE THE QUALITY OF LIFE FOR EVERYONE IN OUR COMMUNITY.

WE'RE PROUD TO HELP SUPPORT PERFORMANCES THAT ENRICH US ALL.

**FirstEnergy**

2 6 3 5

**Ohio Arts Council**

## Building Ohio Through the Arts

Supporting organizations with state tax dollars to encourage economic growth, educational excellence and cultural enrichment.



Share the Arts

Ohio Arts Council  
727 East Main Street  
Columbus OH  
43205-1796  
614/466-2613  
[www.oac.state.oh.us](http://www.oac.state.oh.us)

Visit today.

**ArtsinOhio.com**

Find what, when and where arts and cultural events are happening in Ohio...instantly! Just search the Event Finder by whatever criteria are most important to you.





## Ticket Information

**\* Tickets** Purchase in person or charge by phone with Visa, MasterCard or Discover at 330-836-2626, Tuesdays through Fridays 10 a.m. to 5:30 p.m. and on performance Saturdays from 11:30 a.m. to 5:30 p.m. *Reservations are also required when using coupons from your Weathervane Super Coupon Book, complimentary tickets or coupons offered from any other cooperating arts organization.* Please arrive 20 minutes before curtain time to pick up your tickets. Unclaimed tickets will be released for sale five minutes prior to curtain at the discretion of the Box Office Manager and volunteers.

**\* Special seating** Please inform us if you have seating preferences due to visual, auditory or other physical needs. Please remember orders are filled on a first-come, first-served basis with season subscribers and advanced group sales taking first priority.

**\* Season Subscriber Exchanges** must be phoned in at least 24 hours prior to

your originally scheduled performance. We can't always guarantee the same seats but we'll give you the closest available replacements. An upgrade fee applies when changing from a Preview Night. *If you cannot use your subscription seats, please call us at least 24 hours in advance to release them. We will recognize this as a donation.*

**\* Student Rush Tickets** go on sale 30 minutes before curtain time. Students with a valid ID may purchase any remaining tickets for half price. Rush tickets cannot be reserved in advance.

**\* Discounted Group Reservations** are available for groups of 15 or more. Call Weathervane at 330-836-2626 to learn how you can entertain friends, associates, or clients with a night at the theater or to plan a fund-raising event for larger groups.

**\* Gift Certificates** are available at any time in any amount you choose.

**\* Recycle your playbills** Anyone who doesn't wish to keep the playbill may drop it in our recycling box.

**Money-saving super coupon books** are available all season.

### Super Coupon Books

*Help You Save!*

*Where Theater Comes Alive!*

Booklets contain eight coupons and serve as pre-paid admissions for main-stage series productions. Use them one-at-a-time or all at once!



## WEST SIDE VOCAL ACADEMY

*Professional Teachers — Professional Results*  
Voice — Acting

Ron Hazelett  
Bass

330-864-0660

Susan Wallin  
Soprano

*Charting new paths towards the future of the Arts.*

# Look smart. Be smart.



Turning heads through smart design

**MINX** DESIGN

330.762.4126 • 1.888.GET.MINX



*The tradition continues...  
distinctive retirement living*

*The Merriman*



*The Merriman, our inaugural season, 2003 — 2004*

For 52 years our home has provided a place for area seniors to receive loving care. With our commitment to preserving this tradition comes our ongoing promise to residents, families, staff, and the community that The Merriman will provide exceptional care and distinctive retirement living.

Now accepting reservations for gracious accommodations:

- Nursing Care
- Memory Care
- Gourmet Dining
- Restorative Care
- Assisted Living
- Senior Day Activities
- Wellness Programs
- Physical Therapy

For a personal tour of our distinctive residence, contact Barb Mullin at (330) 762-9341.

*The Merriman*, 209 Merriman Road, Akron Ohio 44303

**Supporting inspirational performances  
delivered by exceptional people.**

[www.brunercox.com](http://www.brunercox.com)



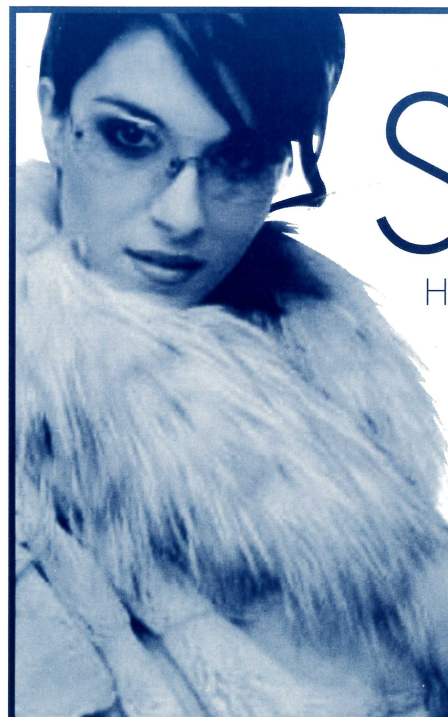
At Bruner-Cox LLP, we believe the expertise, integrity and continuity of our people allow us to deliver innovative accounting and consulting solutions to every client relationship.

Experience the value of our people.

**BRUNER-COX LLP**

Business Consultants & Certified Public Accountants

**Our people. Your solutions.**



**SEXY**

High fashion furs at a price  
that will turn you on.



104 Summit Mall  
Mon/Thu 10am-8pm • Tues/Wed/Fri 10am-6pm  
Sat 10pm-5pm • Sun Closed • 330-867-2771





## Women's Board

The Women's Board was formed in 1938 to "offer voluntary service and financial assistance to the Playhouse." Women's Board has energized youth education programs, sponsored productions, spearheaded fund raisers and paid for many of the amenities we appreciate in the Green Room/kitchen. Members of this active group are invaluable as hostesses, office helpers and backstage. The Women's Board sponsors an annual puppet presentation for children and also operates the Gift Boutique and Bank One Art Gallery.

*New members are welcomed.*

### 2003-2004 Officers

<b>Thelma Coss</b> .....	President	<b>Jane Krimmer</b> .....	Recording Sec.
<b>Randie Sass</b> .....	First Vice President	<b>Nancy Zeigler</b> .....	Treasurer
<b>Jean Questel</b> ..	Second Vice President	<b>Evelyn Stiggers</b> ..	Assistant Treasurer
<b>Jacqui Sukie</b> .....	Corresponding Sec.		

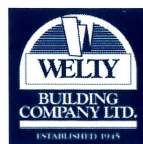
### Committee Chairs

Art Gallery .....	<b>Marci Paolucci</b>	Hospitality .....	<b>Marta Williger</b>
Boutique .....	<b>Mary Wolfman</b>		<b>Janet Budai</b>
	<b>Betty Watterson</b>	Newsletters .....	<b>Jacqui Sukie</b>
Boutique Treasurer	<b>Barbara O'Connor</b>		<b>Pat Weill</b>
Costumes .....	<b>Janet Heilmeier</b>	Puppet Show .....	<b>Jill Forster</b>
	<b>Henrietta Cook</b>		<b>Leslie Lund</b>
Hostesses .....	<b>Patrice Bechtol</b>	Membership .....	<b>Jacqui Sukie</b>
	<b>Pat Obenour</b>		<b>Thelma Coss</b>
Cast Suppers .....	<b>Wendy Cooley</b>	House Committee .....	<b>Jane Krimmer</b>
			<b>Betty Williams</b>

### Boutique Treasures

Our lobby Gift Boutique is a fund-raising project of our Weathervane Women's Board. Shop from one hour before curtain time or during intermission for great gift items. Prices are extremely reasonable and the items on sale include a

delightful variety from clowns and animal figures to pens, pins and earrings. Our Boutique volunteers will also assist you with information on purchasing gallery art works.



### Building the Arts

Akron Art Museum  
Blossom Music Center  
Inventure Place  
Weathervane Playhouse



123 South Miller Road, Akron, Ohio 44333 Phone: 330-867-2400



## Weathervane's Professional Staff

**ELYNMARIE KAZLE** (Executive Director) begins her seventh season for WCP. She has spent 26 years in theater, first as a stage manager then in producing, fundraising and as a public relations rep for theaters across the US. She's had the pleasure of working with a wide range of artists from Mikhail Baryshnikov to Michael Korie, Ed Asner to Chita Rivera, in theaters such as San Diego's Old Globe, Sacramento Theater Company, LA Classical Ballet, Opera Columbus, Great Lakes (Shakespeare) and Brooklyn Academy of Music. Akron was important to Elynmarie early in her career when she served as lighting apprentice to Tom Skelton and Ohio Ballet in the early 1980s. Her diverse experience in Marketing/PR includes a stint with the Wall Street Journal. She is currently VP of Membership and Development of USITT and the founder of the nationally-known Stage Management Mentoring Project. She lives in Akron with her husband Mark and son Banno.

**JANIS L. HARCAR** (Director of Marketing & Development) holds an M.A. in Arts Administration from The University of Akron and a B.S. in Music Education from Kent State University and has been a Weathervane staff member since 1993. She serves as the Artistic Director of the Ravenna Community Choir and Director of St. Paul Lutheran Church Choir also in Ravenna. At the 2003 Chanticleer Ceremonies, Jan was honored with the Trustees Award.

**ALAN SCOTT FERRALL** (Scenic Designer/Technical Director) began at Weathervane under the tutelage of John R. Thomas. Learning the skills necessary to work full-time in the theater, Scott was hired at Cuyahoga Falls High School as auditorium manager, where he spent the next six years. During that time, he was awarded a

Design Excellence citation from USITT for *Carousel*, and a place in *Who's Who Among America's Teachers*. He has also designed for many local high schools as well as for The Players Guild, Cleveland Signstage and Channels 45/49. Scott has earned three Chanticleer Awards -- one as stage manager for *Fences*, the others as lighting co-designer for *A Man for All Seasons* and lighting designer for *The Laramie Project*. Scott also takes great pleasure in writing the end-of-the-season revue for The Not-Ready-for-Mainstage Players who appear at our annual Chanticleer Awards Dinner.

**SEAN MCCONAHA** (Director of Education and Producer of Youth/Family Productions) holds a dual major in Theater Performance and Pre-Law from West Virginia Wesleyan College and an M.A. in Theater from The University of Akron. He is a free-lance actor and director throughout Northeastern Ohio. Sean directed the OCTA award-winning production of *Romeo and Juliet* as well as the 1999-2000 season's Chanticleer winner for Best Production, *The King of the Kosher Grocers*. He lives in Bolivar with wife, Beth, daughters, Leda and Delaney, and twins born June 4, 2003, Zoe Grace and Griffin Dean.

**KEITH D. CAMPBELL** (Supervisor Front-of-House & Patron Services) holds a B.A. in English from The University of Akron, where he served as editor of *The Buchtelite* and sang with the Akron Symphony Chorus. During the summers of 1995 and 1996, he interned in the box office at Porthouse Theatre Company. Keith has done post-baccalaureate studies in Arts Administration at The University of Akron. This is his eighth season at WCP.

**JOHN COTTER** (Business and Public Relations Assistant) has the duties that come with helping Jan and Keith in the Marketing and Box Office areas. He also serves on





## Professional Staff continued

Weathervane's Production Board as Co-Chair of Auditions. John is a retiree of 36 years with Ohio Edison and has been a long-time volunteer of the Playhouse having served on the Production Board as its President and Co-Chair of Properties. He has also worked backstage for many productions and has won Chanticleers for Properties Design for four productions, his most recent being design of *Proof* in 2003. He is, however, most proud of his three grandchildren, Dana, Nicholas and Kristin.

**KATHRYN A. KOHL** (Assistant Technical Director) holds a degree in Elementary Education from BGSU and a Master of Business Management Degree from Aurora College in Aurora, IL. She began her theater career as a volunteer on many lighting and set construction crews. She served as Properties Designer for *Dracula* and won a Chanticleer for proper-

ties co-design of *The Philadelphia Story*. Kathy also volunteers as Resident Master Carpenter and Master Painter for the Theatre Department at Firestone High School. She lives in West Akron with husband Doug and their three children, Stephanie, Zachary, and Katie.

**DREAJEAN L. BROWN** (Data Services Manager) holds a Master of Science Degree in Technical Education and a Bachelor of Science Degree in Education from The University of Akron. She was recently promoted to the position of Director of Administration for the Ohio & Erie Canal Corridor Coalition. She is an active member of Delta Sigma Theta Sorority, Inc. Akron Alumnae Chapter. This season she eagerly welcomed a new granddaughter and a new son-in-law. Her major priority for this season is to spoil her grandchildren.

### Many Thanks to Our Season Sponsors

Summit County Children Services sponsor for *Charlie & the Chocolate Factory*

County of Summit Alcohol, Drug Addiction & Mental Health Services Board sponsor for *Proof*

Akron Publishing Company - Ad Sales

Minx Design - Graphic Designer

Ohio Arts Council - Season Sponsor

PAX TV 23 - Season Sponsor

Greystone Hall -- Reception Sponsor

The Grotto on Merriman -- Reception Sponsor

SAM'S Club -- Reception Sponsor

Tiffany's Bakery -- Opening Night cakes

WKSU 89.7 FM -- Season Sponsor

WRMR 1420 AM -- Radio Sponsor for *My Way*

**FUNS COSTUMES & MAGIC EMPORIUM**

Costumes • Wigs • Hats  
Make Up • Santa & Bunny Suits  
Mardi Gras Beads  
St. Patrick's Day • Luau  
Book Reports

**10% Off your next purchase thru 09/30/04**

3505 Wyoga Lake Rd. Cuyahoga Falls  
**330-923-3339**

Community  
**Cash Back Program**

**September 7 - May 15**

Bring your Acme register tapes in to John Cotter and we'll receive a 1% return on them. This great program was developed by the Acme stores to help community organizations.



## Board of Trustees

Weathervane Community Playhouse is a non-profit 501(c)(3) corporation operated by a board of volunteer trustees representative of the general community. Regular monthly meetings of the Board of Trustees are open.

### Officers

George Moxon . . . . .	President	Jim Horvath . . . . .	Assistant Treasurer
Richard Worswick . . .	First V. President	William Glaeser . . . . .	Secretary
Mary Beth Kluge . . .	Second V. President	Margaret J. Dietz . . . . .	Historian
Laura Kerchner . . . . .	Treasurer	Steven P. Schmidt . . .	Immed. Past Pres.

### 2003-2004 Trustees

Nancy Ashcom	Michael Davis	Dr. Amy Lee	Jack Steele
Kathy Ashcroft	Dr. Rozelle Duncan	Karen Lefton	Thomas Stephan
Barbara Baskin	Christopher Esker	Myron Lewis	Elinore Stormer
Clarence F. Carlson	Jon Fiume	John Morgan	Mary Warhol
Thelma Coss	Roy Hartz	Doug Mory	Mark A. Zimmerman
Paul Daum, Ph.D.	Jeffrey Houck	Sheila Motter	

### Advisory Board Members

Mary Adams	W. Scott Emerick	Libby Jacobs	Dr. Susan Speers
Chuck Ayers	Helen Fleming	Eric Jones	Bob Velotta
Bunny Ballance	Jill Forster	Ardith M. Keck	Shari Whitfield
Madeline Bozzelli	Dr. Penelope Frese	Dede Klein	Mary Whitmer
Stanley Brandt	Ian Haberman	Eileen Moushey	Mary Wolfman
Ann Brennan	Richard Harris III	Jim Nilsen	Mel Wolfman
Nancy Cates	Bob Hasman	Jo Ann Oelschlager	Mona Wolfman
Ron Cimini	Marilyn Heagerty	Margo Snider	June Zeno
Frank Comunale			

### Production Board

**Mark A. Zimmerman -- Chair**

Auditions . . . . .	M.J. Coulson & John Cotter
WOMEN'S BOARD Costume Shop . . . . .	Sandra Harding
FIRST ENERGY Lighting Dept. . . . .	Mark A. Zimmerman
Properties . . . . .	John Riazzi
Sound . . . . .	Charles Korecki & Tom C. Barnes
Stage Management . . . . .	Nikki Rafferty
<i>Ex-Officio:</i>	
Women's Board Representative . . . . .	Thelma Coss
Producer of Youth/Family Productions . . . . .	Sean McConaha
Technical Director . . . . .	Alan Scott Ferrall
Salon Series Coordinators . . . . .	Tom Abdo & Suzanne Smith
Play Selection Chair . . . . .	Beverly Smith
Executive Director . . . . .	Elynmarie Kazle
House Managers . . . . .	John Cotter





## Our Generous Donors

*Weathervane Playhouse gratefully acknowledges the financial support of our corporate, foundation and individual members. Their Membership helps keep admission prices low and helps us to maintain the high standards of production you've come to associate with Weathervane. This list is updated throughout the season.*

### SUPER FOUNDERS (Gifts of \$10,000+)

City of Akron	Ohio Arts Council
The GAR Foundation	Weathervane Women's Board

### FOUNDER'S CIRCLE (Gifts of \$5,000+)

Akron Community Foundation	OMNOVA Solutions Foundation
Alpha Phi Alpha Fraternity, Inc.	Charles E. & Mabel M. Ritchie
Ann & Dave Brennan	Memorial Foundation
Bridgestone/Firestone Trust	Sisler McFawn Foundation
Eileen & H. Peter Burg	Lloyd L. & Louise K. Smith
Mary B. Demetros Foundation	Memorial Foundation
John A. McAlonan Fund	

### PLATINUM MEMBERS (Gifts of \$1,000+) **INDIVIDUALS**

Fred & Francia Albrecht	Mr. & Mrs. George Moxon*
Family of Roger G. Berk, Sr.	Thomas R. Trotter & Martha Kaltenbach
Elynmarie Kazle & Mark A. Zimmerman	underwrites costumes for <i>Nunsense</i>

### CORPORATIONS & FOUNDATIONS

Babcox Publications	Michelson Foundation
Glenn R. & Alice B. Boggess Memorial Foundation	Laura R. & Lucian Q. Moffitt Foundation
Brennan Family Foundation	The RC & Katherine Musson Charitable Foundation
FirstEnergy Foundation	M. G. O'Neil Foundation
The Goodyear Tire & Rubber Company	<b>TARGET</b>
C. Blake & Beatrice McDowell Foundation	

### GOLD MEMBERS (Gifts of \$500 - \$999) **INDIVIDUALS**

Susan & Patrick Baker	Janet & Jim Heilmeier	Jo Ann Oelschlager
Juanita & Chic Carlson	Kathy & Doug Kohl	Steven P. Schmidt, PhD*
John Grafton & Richard Worswick*	Dr. & Mrs. Edward Kosedal	Mary & Mel Wolfman
Eileen & Ralph Greene	Richard & Leslie Lund	
	David & Elaine Makinson	

### CORPORATIONS & FOUNDATIONS

InfoCision Management Corp.	National City Bank
Myers Industries, Inc.	Summit County Internists, Inc.

*\*Denotes Board of Trustees*



## Our Generous Donors continued

### SILVER MEMBERS (Gifts of \$250 - \$499)

#### **INDIVIDUALS**

David Ashe	Barry Friedman	Patricia Obenour
Juanita & Chic Carlson*	Roy & Mary Hartz*	Barbara B. O'Connor
Mildred Collis	Jim & Charlotte Horvath*	John O'Neill
Dr. Paul Daum*	Jeffrey P. Houck*	Judy & Roger Read
Margaret J. Dietz*	Dr. Jack & Libby Jacobs	Dr. Douglas & Jane Sanders
Dr. Richard & Mary Beth Ellison	Dr. Amy Lee*	Connie & Bob Velotta
W. Scott & Sandra Emerick	Dr. Douglas & Karen Lefton*	
Helen & Chisna Fleming	Samuel I. Levey	

### CORPORATIONS & FOUNDATIONS

Air Enterprises	GoJo Industries	Steere Enterprises
Bober, Markey, Fedorovich	Jeter Systems	Welty Building Company
Cedarwood Companies	Maynard Family Foundation	
FW Albrecht Family Foundation	Roetzel & Andress	

### PATRON MEMBERS (Gifts of \$150 - \$249)

#### **INDIVIDUALS**

Drs. Morton & Miriam Agins	Dr. Lowell & Francine Gerson	Doug Mory*
Nancy Ashcom*	Mary & William Glaeser*	Dr. George & Janet Nankervis
Kathleen Ashcroft*	Ginny & Jay Hershey	Dr. Luis & Theresa Proenza
Mr. & Mrs. Lance C. Bergstrom	Meg Hopp	Sandy & Sam Smith
Vicki & Dave Brockman	Mrs. Harvey Karam	Susan D. Speers, Ph.D.
Curt Brown	Laura & Jeff Kerchner*	Jack Steele*
Rozelle Duncan, Ph.D.*	Mary Beth Kluge*	Thomas Stephan*
Christopher Esker*	William W. & Anne M. Lowery	Judge & Mrs. Harold White
Dr. & Mrs. Stephen A. Farkas	Mrs. C. Blake McDowell, Jr.	Marta J. Williger
The Farmer Family	Tina & John Mogen	Mona Wolfman

### CORPORATIONS & FOUNDATIONS

Akron Publishing Company	The Davey Tree Expert Co.	Peters, Tschantz & Bandwen
Akron Tool & Die	Flexsys America	The Ruhlin Company
Amer Insurance	GBC Design, Inc.	Smithers Scientific Services
Annaco	Hitchcock Fleming & Assoc.	Yoder Brothers, Inc.
Arther Printing	Kastner, Westman & Wilkins, LLC	
Brockman, Coats, Gedelian		
ComDoc, Inc.	Mogen Real Estate	
Database Marketing	North Akron Savings	

### SUSTAINING MEMBERS (Gifts of \$100-\$149)

#### **INDIVIDUALS**

John & Kathy Arther	Paul & Ruth Eisenzimmer	Stacia & Mike Kaschak
Mary & Rollie Bauer	Diana & John Gayer	Dr. C. William & Ardith M. Keck
Doug & Mary Ann Bell	Tatiana & Richard Harris	Richard & Judy Kotick
Curt Brown	Ellen & Karl Hay	Shelley & Thomas Koutnik
John & Maryanne Cotter	Marilyn Heagerty	Dr. Donald & Wendy MacKay
Bea Dagilis	Kathryn M. Hunter	Martha Mazak
Jane & John DeYoung	Mrs. Harvey Karam	Margaret & John McBride





## Our Generous Donors continued

### SUSTAINING MEMBERS - Individuals Continued

Lynn & Edward Metzger	Mr. & Mrs. Richey Smith	Mary K. Whitmer & Stanley
Mr. & Mrs. Richard D. Miller	Mr. & Mrs. Edgar Steinmark	Brandt
Virginia D. Moline	Dr. & Mrs. Robert Stone	Mr. & Mrs. Jack Wigley
Norbert J. Moran	Paula & John Troche	Libby & Jeff Wilson
Gloria T. Reich	Manny Underdown	B.J. Zeigler
Jay Sigler	Linda Waite	Dan & June Zeno
Lois & Paul Simmons	Pat & Leo Weill	

### CORPORATIONS & FOUNDATIONS

Akrochem Corporation	Cohen & Company	Holland Oil
----------------------	-----------------	-------------

### CONTRIBUTING MEMBERS (Gifts of \$75 - \$99)

#### INDIVIDUALS

Carol Boyd	Dr. & Mrs. Raymond Kimberly	Edith & Norbert Weisend
Norma Bucey	Jo McGarvey	Linda Werntz &
Bridget & Steve Dolin	Arlene McKinnon	Robert E. Cunningham
Raleigh & Gloria Drennon	The Moushey Family	Dr. Jeff Yatsu
Suzy Elderkin	Dr. Joseph Rapotec	Laurie Zuckerman &
Carla & John Kachmar	Bertie & Milton Sass	Steve Johnson
Mildred & Arthur Kattan	Susan & David Scarponi	
Dr. & Mrs. Lawrence Kaye	Barbara & Russell Stevic	

#### FRIENDS (Non-Voting)

Madeline & Libert Bozzelli	Emily Fleisher	Ruth & Saul Senser
Mr. & Mrs. Gerald A. Colonna	George J. Gauthier	Christine Stewart
Rebecca DeBolt	Atha Hayes	Mr. & Mrs. Gale Urda
Janet & Donne Clark	General Metals Powder Company	A.E. & L.C. Wallach
Mr. & Mrs. Michael DelMedico	Jewell Cotter Sauser	Zuckerman Consulting Group

### SPECIAL 100-HOUR MEMBERS

Bill Berry	Joanne S. Reed	Sonny Russo
Sarah Kormushoff	Robert H. Reynolds	

#### IN-KIND DONATIONS

The Kormushoff Family	Sandridge Foods	Frank C. Comunale
-----------------------	-----------------	-------------------

Weathervane Community Playhouse gratefully acknowledges **IBM, SBC, FirstEnergy, The BF Goodrich Company, Key Foundation, The Goodyear Tire & Rubber Company and Illinois Tool Works Foundation** for contributions made through matching gifts programs.

Weathervane Community Playhouse gratefully acknowledges **The Sisler McFawn Foundation, Akron Community Foundation, OMNOVA Solutions Foundation and Target Stores** for contributions for Project STAGE presentations and Youth Outreach Programs.



### We're the bank who can help.

Second National Bank can help you adapt to parenthood by taking care of your newly acquired financial obligations. One of our Wealth Managers will help you invest, insure, and plan for future tuition payments. Along with anything else you need to give your wealth the attention it deserves. So you can give your family the attention it deserves. *Wealth Management*







## Welcome from the Executive Director

Welcome! We were a bit ahead of ourselves this year when we made resolutions for the New Year. We did so by updating and reaffirming our mission statement. We resolved to make it more of an expression of the kind of organization we want to be and to become in this new century. It reads, *Weathervane Community Playhouse and its dedicated volunteers offer a vital performing arts resource for the people of Northeastern Ohio. We create exciting, thought-provoking shows with impressive production values. Through education programs and volunteer opportunities for both adults and children of all backgrounds, Weathervane serves the theater community, our patrons, and our young people.* In summary - **Dynamic productions, strong outreach and continuing education.**

**Dynamic Productions** began with a successful Northeast Ohio premiere of *My Way, a Musical Tribute to Frank Sinatra* and a critically acclaimed, Akron premiere of David Auburn's powerful drama, *Proof*. Our youth program rose to the challenge by selling more tickets to *Joseph and the Amazing Technicolor Dreamcoat* than ever before — even though the production competed for attention with various *Josephs* at other playhouses.

**Strong Outreach.** This season, taking our programs and going on the road has meant sending teachers to conduct workshops for eight underserved public elementary schools through the Akron After School program. In addition, we have responded to the needs of parents who have commuted here with their children to Akron over the years for our HOT program by collaborating to open a satellite workshop program in Medina.

**Continuing Education.** Our artist-in-residence program continues to unite area residents. With the visit of playwright and screenwriter Lucy Wang in January and visits yet to come by Paul Linke, writer, director, monologist and actor Charles S. Dutton you can find the excitement building in every nook and cranny.

Other special events include a Valentine's Day Reverse Raffle on Saturday February 14, a Salon Reading of *Enchanted April* on Sunday, February 29, performances of *School House Rock, Jr.* and our *Mr. Lewis Rules* step-up presentation on February 16th and 17th. April brings us the *Faithful Fathers Stage Dads* (sponsored by The Akron Community Foundation and Alpha Phi Alpha Foundation of Akron) a weekend of events beginning on Friday, April 2. And finally, the players of Moushey will stage a murder for sleuthful solving and fun galore on Friday, April 9. Other surprises to follow as the season continues.

I hope you enjoy our productions and that they make your winter brighter. *Irma Vep* is a real howler, *A Lesson Before Dying* and *The Crucible* pack a powerful punch and our special projects and presentations will chase the winter doldrums away. Pick your program! We want you to be surprised, engaged, entertained and, most of all, here with us at Weathervane Playhouse. Enjoy!

*Elaine Kagle*



## Weathervane Community Playhouse

69th Season — 2003-2004 — Production # 505

January 14 - February 1, 2004



“a penny dreadful”

by **Charles Ludlam**

Directed by  
**Susan D. Speers, Ph.D.**

Stage Manager  
**Andrew S. Clark**

*nat en DB*

Costume Designer  
**Penelope A. Frese, Ph.D.**

Sound Designer  
**Judy Willemssen**

Lighting Designer  
**Vaughn G. Austin**

Scenic Designer  
**Alan Scott Ferrall**

Properties Designer  
**Simon Anthony Siegel**

Assistant Stage Manager  
**Lisa Shay**

*The Mystery of Irma Vep* is produced by special arrangement with Samuel French, 45 West 25th Street, New York, N.Y. 10010-2751.

Weathervane productions are sponsored in part by



**Ohio Arts Council**

Weathervane Community Playhouse, 1301 Weathervane Lane, Akron, OH 44313-5186

Ticket Office: 330-836-2626 — Fax: 330-873-2150 — Email: wcpakron@aol.com

www.weathervaneplayhouse.com





## About the Play and Playwright

On the wild and gloomy moors of England in a huge old mansion, a young and beautiful bride finds that things are not as they should be at Mandacrest Estate. Thus begins *The Mystery of Irma Vep*—a “penny dreadful” by Charles Ludlam. “Penny dreadful” was Victorian slang for the cheap paper horror or crime stories beloved by adolescent boys of that day as well as by housewives who hid the papers under their pillows. Set in an English Country Manor near Hampstead Heath, the action takes place between wars, and includes a trip to Egypt.

A vampire, a werewolf, a mummy...what more could you want? Good actors, you say! We give you Scott Crim and Richard Worswick, two experienced performers in regional theater, to play all the roles!

The Ridiculous Theatrical Company was founded in 1967 and worked continuously for 17 years with Charles Ludlam to develop a style of ensemble playing epitomizing wit, parody, vaudeville farce, melodrama and satire. *Time* magazine and *The New York Times* cited *Irma* as one of the best plays of 1984. *Irma* also received a special Drama Desk Award and two Obies. The Ridiculous Theatrical Company developed a repertoire of plays which it took all over Europe and to many major cities in the United States where the company itself garnered more Drama Desk Awards and more Obies. (The Ridiculous Theatrical Company is not to be confused with the Reduced Shakespeare Company; Weathervane produced its *Complete Works of William Shakespeare, Abridged* in April 2003.)

### About the Playwright

**Charles Ludlam** was obsessed with puppets and marionettes as a child. He appeared in school plays and founded his own theater at the age of 17 in Northport, Long Island where he staged productions of Strindberg, O'Neill, Kikuchi, Kahn and Yevreinov. He won an acting scholarship to Hofstra University where he received a degree in dramatic literature. In 1967 he founded The Ridiculous Theatrical Company with six friends. He won a Guggenheim fellowship in playwriting in 1970 and in 1977 received a CBS fellowship to Yale where he coached graduate students in playwriting. He appeared on Madeline Kahn's television show *Oh Madeline* and played the title role of Hedda Gabler for the American Ibsen Theatre in Pittsburgh. Ludlam died of AIDS on March 28, 1987 at the age of 44. *The New York Times* said of him: “A valiant theatrical renaissance man who has stubbornly pursued an idiosyncratic artistic vision.”



## The Mystery of Irma Vep -- Cast

Jane Twisden	.....Richard Worswick
Nicodemus Underwood	.....Scott K. Crim
Lady Enid Hillcrest	.....Scott K. Crim
Lord Edgar Hillcrest	.....Richard Worswick
An Intruder	.....Richard Worswick
Alcazar	.....Scott K. Crim
Pev Amri	.....Scott K. Crim
Irma Vep	.....?????

### Setting:

The action of the play takes place in the library drawing room of Mandacrest, the Hillcrest estate near Hampstead Heath, England, between the wars, and various places in Egypt.

Act I  
Mandacrest, on the moors  
Act II  
Various places in Egypt  
Act III  
Mandacrest

*There will be a fifteen-minute intermission after Act I*

Author's Note—A revised version of *The Mystery of Irma Vep* by Charles Ludlam opened off-Broadway on October 1, 1998 at the Westside Theatre, 407 West 43rd Street, in New York City. The production was presented by Steve Asher, Richard Frankel, Thomas Viertel, Steven Baruch and Marc Routh, and directed by Everett Quinton.

**\*For your safety, we request that you remain seated until the house lights have come up at intermission and after the curtain call.**

\*The use of cameras, recording equipment and laser pointers is forbidden during this performance.

\*As a courtesy to fellow audience members, please make sure that cell phones and pagers are turned off during the performance.

\*Please do not bring food or drink in the auditorium.

\*NOTE: In case of an emergency in which the performance cannot continue, Calamity Vouchers will be issued for a future performance. Thank you.





## About the Play and Playwright

On the wild and gloomy moors of England in a huge old mansion, a young and beautiful bride finds that things are not as they should be at Mandacrest Estate. Thus begins *The Mystery of Irma Vep*—a “penny dreadful” by Charles Ludlam. “Penny dreadful” was Victorian slang for the cheap paper horror or crime stories beloved by adolescent boys of that day as well as by housewives who hid the papers under their pillows. Set in an English Country Manor near Hampstead Heath, the action takes place between wars, and includes a trip to Egypt.

A vampire, a werewolf, a mummy...what more could you want? Good actors, you say! We give you Scott Crim and Richard Worswick, two experienced performers in regional theater, to play all the roles!

The Ridiculous Theatrical Company was founded in 1967 and worked continuously for 17 years with Charles Ludlam to develop a style of ensemble playing epitomizing wit, parody, vaudeville farce, melodrama and satire. *Time* magazine and *The New York Times* cited *Irma* as one of the best plays of 1984. *Irma* also received a special Drama Desk Award and two Obies. The Ridiculous Theatrical Company developed a repertoire of plays which it took all over Europe and to many major cities in the United States where the company itself garnered more Drama Desk Awards and more Obies. (The Ridiculous Theatrical Company is not to be confused with the Reduced Shakespeare Company; Weathervane produced its *Complete Works of William Shakespeare, Abridged* in April 2003.)

### About the Playwright

**Charles Ludlam** was obsessed with puppets and marionettes as a child. He appeared in school plays and founded his own theater at the age of 17 in Northport, Long Island where he staged productions of Strindberg, O'Neill, Kikuchi, Kahn and Yevreinov. He won an acting scholarship to Hofstra University where he received a degree in dramatic literature. In 1967 he founded The Ridiculous Theatrical Company with six friends. He won a Guggenheim fellowship in playwriting in 1970 and in 1977 received a CBS fellowship to Yale where he coached graduate students in playwriting. He appeared on Madeline Kahn's television show *Oh Madeline* and played the title role of Hedda Gabler for the American Ibsen Theatre in Pittsburgh. Ludlam died of AIDS on March 28, 1987 at the age of 44. *The New York Times* said of him: “A valiant theatrical renaissance man who has stubbornly pursued an idiosyncratic artistic vision.”



## The Mystery of Irma Vep -- Cast

Jane Twisden	.....Richard Worswick
Nicodemus Underwood	.....Scott K. Crim
Lady Enid Hillcrest	.....Scott K. Crim
Lord Edgar Hillcrest	.....Richard Worswick
An Intruder	.....Richard Worswick
Alcazar	.....Scott K. Crim
Pev Amri	.....Scott K. Crim
Irma Vep	.....?????

### Setting:

The action of the play takes place in the library drawing room of Mandacrest, the Hillcrest estate near Hampstead Heath, England, between the wars, and various places in Egypt.

Act I  
Mandacrest, on the moors  
Act II  
Various places in Egypt  
Act III  
Mandacrest

*There will be a fifteen-minute intermission after Act I*

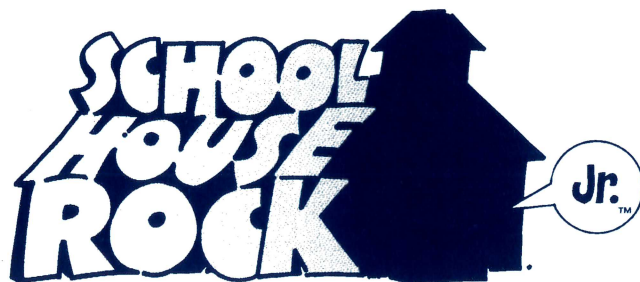
Author's Note—A revised version of *The Mystery of Irma Vep* by Charles Ludlam opened off-Broadway on October 1, 1998 at the Westside Theatre, 407 West 43rd Street, in New York City. The production was presented by Steve Asher, Richard Frankel, Thomas Viertel, Steven Baruch and Marc Routh, and directed by Everett Quinton.

**\*For your safety, we request that you remain seated until the house lights have come up at intermission and after the curtain call.**  
 \*The use of cameras, recording equipment and laser pointers is forbidden during this performance.  
 \*As a courtesy to fellow audience members, please make sure that cell phones and pagers are turned off during the performance.  
 \*Please do not bring food or drink in the auditorium.  
 \*NOTE: In case of an emergency in which the performance cannot continue, Calamity Vouchers will be issued for a future performance. Thank you.





Special Events



From the series created by George Newall and Tom Yohe

Based on an idea by David McCall

Book by Scott Ferguson, George Keating and Kyle Hall

Music and lyrics by Lynn Ahrens, Bob Dorough, Dave Frishberg,

Kathy Mandry, George Newall and Tom Yohe

*A special presentation performed by*

*Firestone High School Theatre*

**Sundays, Feb. 15 & 22 at 7 p.m.**

**Saturday, Feb. 28 at 2:30 p.m.**

**Tickets \$7**

**330-836-2626** (Tu-F 10 a.m. - 5:30 p.m.)

A Memorial Contribution was made to Weathervane Playhouse  
in honor of **Hugh M. Colopy** by  
Margaret J. Dietz

A Memorial Contribution was made to Weathervane Playhouse  
in honor of **James R. Wilson** by  
Maryanne & John Cotter



The Mystery of Irma Vep -- Director

**Susan D. Speers, Ph.D.**, Professor since 1988 in the School of Theatre Arts at The University of Akron, is a producer, director, actor and choreographer who works extensively in the Northeastern Ohio theater scene. She directed Shakespeare productions for eight summers at Stan Hywet Hall & Gardens and acted in its production of *Othello*. Other directing credits include *Arms and the Man* (Weathervane,) *Much Ado about Nothing* (E.J. Thomas Hall,) *Curse of the Starving Class* (Brisbane, Australia,) and over seventy other productions. Her acting credits include Blanche in *A Streetcar Named Desire*, Miss Hannigan in *Annie*, M'Lynn and Truvy in two separate productions of *Steel Magnolias*, Cavale in *Cowboy Mouth*, Diane in *Lend Me A Tenor*, Judge's Wife in *State of Siege*, and a leading role in a national television segment of *Unsolved Mysteries*. She has just finished playing Peggy Richnavsky in an independent film, *Open Mic Night*, in Cleveland. For eleven years, she served as artistic director of Theatre L'Homme Dieu, a professional stock theater in Minnesota. Dr. Speers received the Ph.D. degree from the University of California at Santa Barbara, and is the proud mother of a 20-year-old son, Sean, who is studying film directing at the New York University Tisch School of Film and Television.



**Greystone Hall & Catering**

**A fine dining experience for any event**

**103 S. High Street**

**Downtown Akron**

**330-761-1950**






Weathervane's theme for the season is "We're Going Places." To that end, Marci Paolucci, curator of the gallery, has enlisted the talents of two world travelers, **Michael** and **Martha Kermizis**, who have photographed many exotic places which include some interesting pictures taken in Scotland, the original setting of *Irma Vep*. Michael, an Akron native, is a former photography teacher at Buchtel High School. Though officially "retired," Michael and his wife continue their adventures into photography. Traveling with the "People to People Student Ambassador Program," an outbound student educational experience, has taken them into many strange lands and enhanced their collection exponentially. Michael likes to use a macro lens or a telephoto lens to capture pictures of considerable color saturation and density, always striving to catch his subjects off-guard. Martha reports: "As life pushes toward me, I distill the moment frozen on a fraction-of-a-second time scale, a microcosm, returning mystery and sacredness to space and place captured in a photo image for all to embrace. With camera in hand for fifty-one years, I have recorded these ciphers of my daily life experiences in my backyard, the Grand Canyon, Egypt, China, Utah, Oregon, biking the Cuyahoga Valley and walking around Our Lady of the Elms High School campus, where I have been teaching biology for thirty-two years. This photographic journey has given me an awareness of and gratitude for four billion years of the history of life on earth. It has revealed to me my personal connection with all of life and the enduring feeling that, in our life's journey, it all matters."

There is a Kermizis exhibit at Café Boheme, next to the Denis Conley Gallery and down the street from Ken Stewart's Grill on West Market Street, in addition to this show at Weathervane. The photographs are for sale with prices attached.

 Weathervane Playhouse is handicapped accessible. Ramps are available to the front doors, auditorium and seating.

 Assistive-listening devices for the hearing impaired are available at the Ticket Office.

 Large-Type program inserts are available at the Ticket Office. These copies are not full playbills but contain information unique to this production. These inserts are photocopied and are available in limited quantity.

 American Sign Language interpretations are scheduled for selected Sunday performances.

 Ohio Relay System 1-800-750-0750 TDD. Call to have your ticket order placed.



**SCOTT K. CRIM** (Nicodemus Underwood, Lady Enid Hillcrest, Alcazar, Pev Amri) was last seen on Weathervane's stage as one of the Proteans in *A Funny Thing Happened on the Way to the Forum*. He has also appeared here in *Loot*, *Cabaret*, and in staged readings of Shakespeare's *King John* and *Skylight*. He designed lights for the productions of *Two Gentlemen of Verona* and *Romeo and Juliet*. Scott received a bachelor's degree in theater from Mount Union College. While a student there, he received the Dramatics Award for excellence in the field of theater arts. He was seen there in numerous productions, with his favorites including *A Doll's House*, *Wait until Dark*, *You Can't Take It with You* and *Tartuffe*. He was elected to the theatrical honorary, Alpha Psi Omega, and received special recognition for his sound design for the college's production of *The Baltimore Waltz*. He has spent two years touring with The Illusion Factory children's theater and has taught for two years with The Cleveland Youth Theater. He also teaches a musical theater class with the Music for Kids Studio in Stow. This past summer Scott played the Emcee in The Players Guild production of *Cabaret*. Other stage credits include *Damn Yankees* at Cain Park, *Lion in Winter* and *Love Letters* at Coach House Theatre, and *Hello Dolly!* at Hudson Players. Scott would like to thank his family and his many friends for their support over the years and dedicates this production to his brother David and friends Gene and Megan (since they love horror movies so much).

**RICHARD WORSWICK** (Jane Twisden, Lord Edgar Hillcrest, An Intruder) is in his third year of appearances on Weathervane's stage. He last appeared in the award-winning production of *The Laramie Project*, which the Ohio Community Theater Association honored for its outstanding ensemble and which won Weathervane's Chanticleer for best play of the year. Richard received the Chanticleer for Best Actor in a Play for his portrayal of Reuven Malter in *The Chosen* with Sean McConaha directing. He has also appeared at The Paul A. Daum Theatre in *Fahrenheit 451*; in Cleveland at The Dobama Theatre in *Porcelain*, *Our Country's Good*, and *Lisbon Traviata*; the Cleveland Play House in *The Normal Heart*, *Loves of Cass McGuire* and *Small Craft Warnings*; Berea Summer Theatre in *Greater Tuna*, *Butley*, *The King and I* and *Story Book Theatre*; and in *Alice!* at the Palace Theatre in Playhouse Square. Richard studied acting at The Academy of Dramatic Art at the Meadowbrook Theatre and was a member of the Indiana Theatre Company at Indiana University. Originally from Michigan where he received a bachelor's degree in theater from Eastern Michigan University, Richard spent the last 22 years working as an administrator for The Cleveland Orchestra prior to retiring. He became a trustee of the Weathervane board in 2001. Richard fondly remembers performing with Dame Judith Anderson in *The Orestia* at the Ypsilanti Greek Theatre. Dame Judith inspired this evening's performance with a little direction from Susan Speers.





## Backstage Callboard

**ANDREW S. CLARK** (Stage Manager), a senior at The University of Akron with majors in education and theater, is a very busy man. In addition to his studies, he serves on the Zips sound crew for the Akron Athletic Department, as a tech intern for the Canton Local Schools, and as music director for the Mt. Zion United Methodist Church in Canton (his home town). He was sound and lighting director for *Crazy for You* at Canton South High School. At The University of Akron he was lighting operator for *Subject to Fits*, the *Choreographers' Workshop* and also designed for the UA *One Act Festival*. Most recently he has served as sound designer for *A Midsummer Night's Dream* and stage manager for *Arms and the Man*, both in Sandefur Theatre at UA.

**SIMON ANTHONY SIEGEL** (Properties Designer) is a senior at Firestone High School. He has been properties designer for *Just Passing Through* at Firestone High School; for *Rehearsal for Murder* for Antic, Inc.; and for *Arsenic and Old Lace* and *Babes in Toyland*, both at Weathervane. He was last seen on Weathervane's stage as Young Reuven in *The Chosen* and as Mr. Webb in *Our Town*. At Firestone, he has appeared in *The Servant of Two Masters* and *Annie Get Your Gun*. He has also performed at Coach House Theatre, Our Lady of the Elms and for Hudson Players.

**PENELOPE A. FRESE, Ph.D.** (Costume Designer) directed Weathervane's productions of *Dracula* and *Of Mice and Men* as well as *Tartuffe*, *The Diary of Anne Frank* and *Conversations with My Father*, which won the Best Production Chanticleer for the 1995-1996 season. For *Irma Vep*, she has turned her talents to costuming. Dr. Frese is a former director of ACTOR, a junior high touring company located in

Hudson. She has appeared on stage in productions at Weathervane, Stan Hywet, Cleveland Public Theatre and in a CBS pilot, *True Detective*. At home in Hudson, Penny manages her husband's lecture schedule and often joins him, speaking both nationally and internationally on behalf of children and families with serious mental illness. She is the producer of an award-winning video on childhood depression, *Claire's Story*. She and husband Fred have four children.

**JUDY WILLEMSSEN** (Sound Design) won Chanticleers for her designs of *Translations* and *The Piano Lesson*. Last season she stage managed our production of *The Laramie Project*. Previously, she designed sound for *Lips Together, Teeth Apart* and stage managed the Chanticleer Award-winning production of *Harvey*. In addition to her Weathervane stints, she also designed sound for North Canton Playhouse's production of *Steel Magnolias*.

**VAUGHN G. AUSTIN** (Lighting Design) joined Weathervane during the 1976-1977 season and began stage managing with *Same Time Next Year*. He has worked on fifty-three productions, winning three Chanticleers for best production and three for best sound design. His most recent contribution was sound design for *Proof*. Vaughn has a chemical engineering degree from Penn State and is a senior operating systems consultant for National City Bank.

**LISA SHAY** (Assistant Stage Manager) was seen as Tessie Tura in last summer's production of *Gypsy*. She holds a B.S. degree from Auburn University. Lisa served as assistant stage manager for *The Chosen* and as costumer for *The Fantasticks*. She also costumed *Collected Stories* and *Play it Again, Sam* at Coach House Theatre.



## Production Team Members & Crews

**Alan Scott Ferrall -- Technical Director**

Kathy Kohl -- Assistant Technical Director

### SET CONSTRUCTION

Ruth Richardson John Keller  
Spencer Burke Erin Katz  
Tom Marshall Lauri Agins  
Kevin Ford

### SOUND CREW

Pete Chiccarino Greg Nyburg  
Lois Bennett

### COSTUMES

Sandra Harding Dressers:  
Randie O. Sass Jessica Alley  
Janet Heilmeier Karen Burridge  
Lisa Shay  
Mary Kate Clancy

### LIGHTS

Stephen Moushey Jeff Bankston  
Steve Lawson

### ACKNOWLEDGMENTS

Adirondac chairs & table loaned by Beth Waldren for *Proof*.  
The sarcophagus used in the production of *The Mystery of Irma Vep*  
was designed by John R. Thomas for our production  
of *The Man Who Came to Dinner* (September 1990).

#### Thanks to Our Volunteers

The following are the vivacious volunteers who assisted you by hosting, house managing and staffing the boutique, office or Green Room during *Proof* and *Joseph and the Amazing Technicolor Dreamcoat*.

Peru Agrawal	Jill Forster	Lois Murray	Ethel Soudry
Dionne Atchison	Susan Gray	Pat Obenour	Susan Speers
Susan Baker	Linda Hale	Betty Oberdorfer	Pam Steffek
Mary Barnhart	Sandra Harding	Barbara O'Connor	Joan Stenger
Nora Barner	Marilyn Heagerty	June Olee	Barbara Stevic
Patrice Bechtol	Linda Heath	John O'Neill	Evelyn Stiggers
Desiree Bolden	Janet Heilmeier	Maria Pizzino	Leeanne Stofsick
Connie Bowen	Diane Herman	Mary Ann Potts	Phyllis & Bob Sugarman
Dreajeane Brown	Terri Herman	Jean Questel	Jacqui Sukie
Janet Budai	Jane Hessin	Bess Raines	April & Doug Talley
Alberta Carlin	Pat Hudson	Joanne Reed	Helen Tschantz
Juanita Carlson	Kim Jameyson	Lori Reilly	Melinda Turner
Janet Clark	Deb Kabacinski	Ruth Richardson	Brenda Unruh
Henrietta Cook	Elynmarie Kazle	Shawn Roberson	Lynn Vanca
Wendy Cooley	Janey Keith Kepes	Kim & Mike Sandridge	Connie Velotta
Thelma Coss	Sharon Kilby	Randie Sass	Linda Waite
John Cotter	Fran Lasser	Susan Sawyer	Betty Watterson
M.J. Coulson	Leslie & Richard Lund	Marla Scarpitti	Pat Weill
Margaret Dietz	Nancy Mahoney	Leslie Schafer	Betty Williams
Suzy Elderkin	Linda Mateen	Christine Schueneman	Marta Williger
Lisa Farmer	Jo McGarvey	Elana Schprechman	Mary & Mel Wolfman
Joanna Farragher	Mitzi Mild	Lois Simmons	Gen Woods
Amorya Farrier	Claudena Miller	Julie Smith	Richard Worswick
Virginia Flemm	Amanda Montigney	Suzanne Smith	B.J. Zeigler
Helen Fleming	Sheila Motter	Amy Snell	Nancy Zeigler





## Next On Our Stage

# the crucible

by  
Arthur Miller

Feb. 14 - 28

A Youth/Family Production  
Project STAGE

A tragic drama about the historic Puritan purge of witchcraft with moral and political implications for our time. A young girl incites mass hysteria with the cry of witchcraft in order to save herself from punishment.

# A Lesson Before Dying

Adapted by Romulus Linney  
from the novel by Ernest Gaines

March 10 - 28

A Mainstage Production  
Project STAGE

Set in Louisiana in 1948, a school-teacher desperate to run away from the customs of "The Old South" must teach a final lesson to a man sentenced to die for a crime that he didn't commit.

### Weathervane Playhouse Staff

**Elynmarie Kazle** -- Executive Director

**Keith D. Campbell**

Supervisor, Front-of-House  
& Patron Relations

**Alan Scott Ferrall**

Scenic Designer/Technical Director

**Janis L. Harcar**

Director of Marketing &  
Development

**Sean McConaha**

Dir. of Ed./Producer Youth Prod.

**John A. Cotter**

Business & Public Relations Assistant

**Kathy Kohl**

Assistant Technical Director

**Caroline Kline**

Bookkeeper

**Dreajean L. Brown**

Data Services Manager

**Dionne Atchison**

Intern



## Future Events

**February 14** -- 6 - 9:30 p.m.

**EIGHTH ANNUAL REVERSE RAFFLE**

St. George Fellowship Center

Tickets \$100 (extra dinner \$25)

**THE CRUCIBLE** by Arthur Miller

Youth/Family production **Feb. 14 - 28**

**SCHOOLHOUSE ROCK**

Sunday, **Feb. 15 & 22** at 7 p.m.

Saturday, **Feb. 28** at 2:30 p.m.

Performed by Firestone High School  
Theatre -- Tickets \$7 -- Directed and  
choreographed by Karen Sly

**February 16 & 17**

**MR. LEWIS RULES** -- stepup production

7:30 p.m. on stage. Tickets \$10

**February 29**

**ENCHANTED APRIL**, Directed by Alan  
Scott Ferrall -- \*Salon Reading

**March 10 - 28**

**A LESSON BEFORE DYING** by Romulus  
Linney from the novel by Ernest Gaines  
**April 9**

**MURDER MYSTERY BY MOUSHEY** at  
Weathervane -- Fundraiser

Weekend of **April 2 - 4**

**FAITHFUL FATHERS, STAGE DADS**

Event focusing on dads and their chil-  
dren working in the arts.

\*Sundays at Seven: Salon Play Readings are held in  
Weathervane's lobby at 7 p.m. on selected Sundays  
with light refreshments and discussions following  
presentations. Free of charge. All welcome.

summitartspace  
plus



a  
partnership

*James B. McCarthy*  
James B. McCarthy, Executive

## Firestone Theatre

2003-2004 Season



# EVITA

music by Andrew Lloyd Webber  
Lyrics by Tim Rice

directed by Mark A. Zimmereman  
and Michele Valdez

**March 4 - 6, 2004, 7:30 p.m.**

**Firestone High School**

333 Rampart Avenue, Akron  
(330) 873-3408



**MAGICAL  
THEATRE COMPANY**

Professional Theatre for Young Audiences & Families

2003-2004



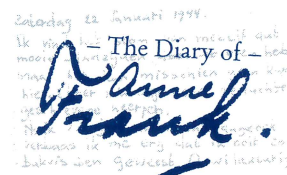
**Bunnacula**

Oct. 17 - 26, 2003



*The*  
**VELVETEEN  
RABBIT**

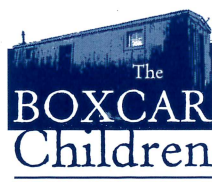
Nov. 28 - Dec. 19, 2003



**The Diary of  
Anne Frank**

Jan. 30 - Feb. 1, 2004

Sponsored in part by Bridgestone/Firestone Trust Fund



**The  
BOXCAR  
Children**

May 7 - 16, 2004

**330/848-3708**

565 W Tuscarawas Ave • Downtown Barberton



**Coach House Theatre**

Akron's 1st Theatre

*Crimes of the Heart*

by Beth Henley  
September 4 - 20, 2003

*barefoot in the park*

by Neil Simon  
November 13 - 29, 2003

**A Christmas Carol**

by Charles Dickens  
Adapted by Mark Dawodzoal  
December 13 - 21, 2003

**ART**

by Yasmina Reza  
Translated by Christopher Hampton  
February 12 - 28, 2004

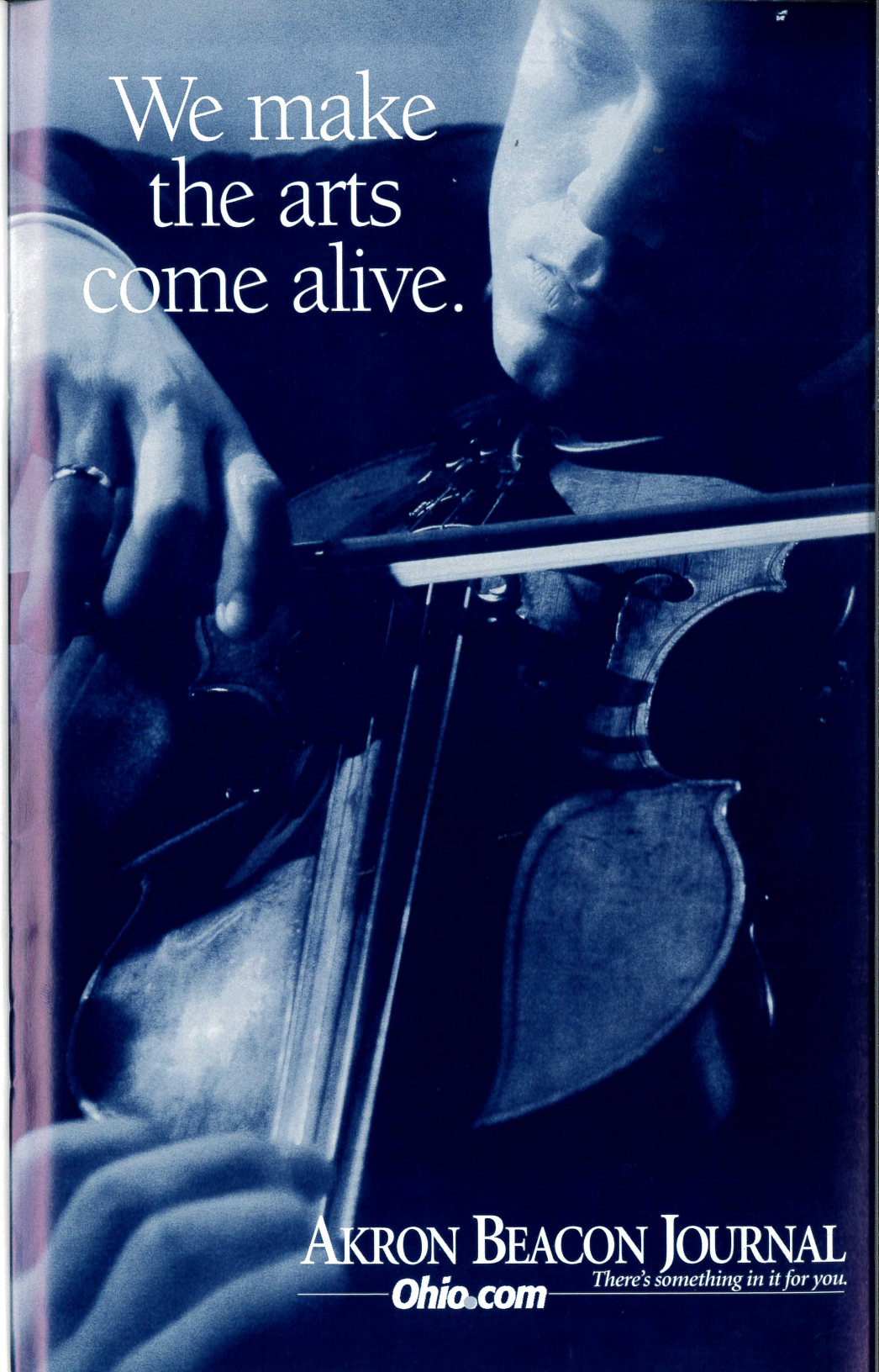
*ten little indians*

by Agatha Christie  
May 6 - 29, 2004

*Join us this season at Coach House  
as we share our passion -- without  
you, it's just a rehearsal!*

*Jim Fippin  
Resident Director*

We make  
the arts  
come alive.

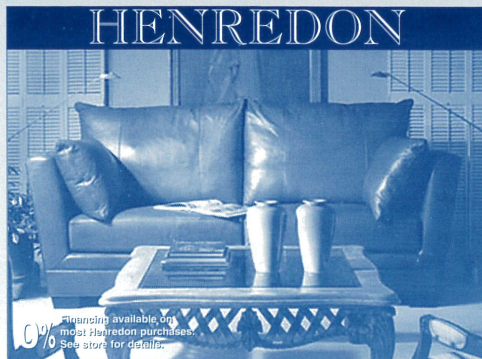


**AKRON BEACON JOURNAL**  
**Ohio.com** *There's something in it for you.*





The Best Place For Fine Furniture in Greater Akron is at Wayside



- Over 200,000 sq. ft. of inventory.
- Providing friendly, responsive service for over 66 years.
- Professional interior designers on staff.
- We buy and sell for less ... every day.

Fine pieces from these quality manufacturers on display:

Kincaid • Pennsylvania House  
Stanley • Lexington • Nautica  
Lane • Smith Brothers • Flexsteel  
Bob Timberlake • Cochrane  
Serta • Broyhill • Clayton Marcus  
Canadel • Howard Miller • Hooker  
Sumter • Crescent • Dozens More

Visit our newly-opened 10,000 square-foot addition!

**Wayside**  
furniture

"Where You'll Find Better Furniture Priced Lower"

1367 Canton Road Akron On Route 91,  
just 1/4 mile south of Route 224  
Shop Daily 10 to 9, Saturday 10 to 6, Sunday 1 to 6  
Visit our website: [www.wayside-furniture.com](http://www.wayside-furniture.com)

330-733-6221

Toll Free 877-499-3968

**Stinaff's**  
DATA FORMS & SYSTEMS SINCE 1935



We're a great cast  
of performers  
in meeting your  
full color printing and  
business form needs!

44 S. Summit St. • Akron, OH 44308  
330-434-2106 • Fax 330-434-9376

**SPOTLIGHTS**

Your Ticket To ENTERTAINMENT

WEST SIDE  
**Leader**

Reaching 43,600 homes  
and businesses in one  
of America's best  
demographic markets.

GREEN  
**Leader**

Reaching over  
10,000 homes and  
businesses  
in the city of Green.

3075 Smith Road Suite 204 • Akron, OH 44333  
(330) 665-9595 • Fax: (330) 665-9590

**Graf**  
**Growers**  
Garden Center • Farm Market

1015 White Pond Dr. Akron  
330.836.2727  
[grafgrowers.com](http://grafgrowers.com)

Bring this ad to  
Graf Growers & receive

**\$5 off \$25**  
reg. price plant purchase  
through 8/31/04

Be Anybody.

**Our Lady of the Elms**

A Dominican Education for Girls.

Open House

Sun, Sept 14: 1-3 p.m.  
Wed, Oct 8: 6-8 p.m.  
Sun, Nov 2: 1-3 p.m.  
Wed, Mar 31: 6-8 p.m.



For more information, please contact  
the Office of Admissions at:

1220 W. Market St.  
Akron, Ohio 44313-7108  
(330) 867-0918

[www.ourladyoftheelms.org](http://www.ourladyoftheelms.org)

Start Here.



**Entertain Your Palette**

Specialty foods and wines

Mrs. Ticklemore's Tea Room

Beside the Point Café

Movable Feast box lunches & dinners

Catering

Gift baskets for all occasions

**WEST POINT MARKET**

1711 West Market St., Akron OH 44313

330-864-2151 / 800-838-2156

Mon-Sat 8am-7pm / Sunday 10am-5pm

[www.westpointmarket.com](http://www.westpointmarket.com)



**PAPAJOE'S**

*Sacomini's*  
SINCE 1932

Dinner before or after the show.

Minutes from

**Weathervane Playhouse**

Restaurant - Deli - Wine Shoppe

**Banquets - Catering**

1561 Akron-Peninsula Road

(330) 923-7999

THE  
**Grotto**  
ON MERRIMAN

**Seafood & Steaks**  
at casual  
dining prices.

1841 Merriman Rd.  
Akron, OH 44313

**330.869.4981**





**Membership  
Warehouse**  
FOR BUSINESS & HOME

## A SAM'S CLUB Membership gives you access to:

Huge Savings  
Brand-name Merchandise  
Great member Benefits

3750 "J" West Market St.  
Fairlawn, Ohio 44333

Marketing 330-665-5337  
Main 330-665-5336  
Fax 330-665-5430

*Weathervane Playhouse  
thanks  
Tiffany Bakery  
for the beautiful opening  
night cakes.*

**Tiffany's Bakery**  
Elegant Selections



**Wedding Cakes**

330-753-0017  
2176 Romig Road  
Akron, OH 44320

GREGG LAUCK

800.795.1366  
Fax 330.342.4826



**THE  
GREENHOUSE  
FLORIST**



Mon. - Fri. 9-5  
Sat. - 9-3



Teleflora

ORCHARD PLAZA \* 5825 DARROW RD \* HUDSON, OH 44236



**Don Drumm  
Studios &  
Gallery**

*It all comes together here.*

437 Crouse Street, Akron, OH 44313  
330.253.6268  
M-F: 10-6, S:10-5



## Volunteering at Weathervane

Weathervane began as a volunteer organization and continues its growth thanks to the time and talent that members of our community invest in it. Our on-stage performers have worked long and hard to earn your applause. But their work is supported by many other unseen men and women who've helped build and paint sets, run the lights and sound, make sure that properties and set dressing items are in their proper places and do other backstage labor from stage managing to costuming and make-up. Supporting those who are actively involved in putting on each show are still more volunteers who usher, house manage, sell tickets, keep our office running and serve on our Board of Trustees, Board committees, Production Board and Women's Board.

Their spirit is the backbone of our continuing operations, a valued support on which our professional staff relies.

Each month, we acknowledge the outstanding Volunteers of the Month in our lobby, but those volunteers represent all who commit their time and interest to create a great theater experience for everyone who's come to see this show.

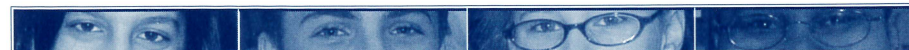
If you have friends or relatives who volunteer generously at Weathervane, we hope you'll take a moment to thank them for their help and their support of the cultural enrichment of our community. Better yet, join them! Call us and we'll help you win your own share of the applause for a "jolly good show," an experience that offers unique challenges with every performance.

## Share the Annual Chanticleer Celebration

Shortly after the final production of each season, Weathervane volunteers and friends share an exciting party to acknowledge outstanding performances by performers and technical volunteers. The top performers are awarded rooster statuettes—Chanticleers—in recognition of their work, as voted by Chanticleer "judges." It's a great night to get together, share hopes, fun and festivities and is open to all.

Awards are presented for outstanding lead performances by a male or female

in a drama or comedy, outstanding support performances, and outstanding lead and support in a musical as well as choices in technical achievement. Chanticleers are also awarded for Properties, Lights, Costumes and Sound Design, plus Best Production of the season. In addition to performance and production awards, the event also recognizes the Top 25 outstanding volunteers of the season. We welcome you to take part in the biggest nail-biting party of the year.



**Different stories. Proven approach. Real success. Lawrence School.**

Northeast Ohio's leader in learning disabilities education since 1969!

1551 East Wallings Road • Broadview Hts. • 440-526-0717 • [www.lawrenceschool.org](http://www.lawrenceschool.org)



# MALONE

CHALLENGING  
CONTEMPORARY  
CHRISTIAN

**God has blessed us with great powers of expression**, and Malone College wants you to appreciate the energy such expression generates. At Malone you can immerse yourself in the arts—just dive in! There are a wide variety of opportunities in the visual arts, music, and theatre, both on and off campus.

**Looking for an “arts experience” at Malone?**

You don't have to look far: Chancel Players, Chapel Band, Chorale, Concert Band, Instrumental Ensembles, Jazz Band, Marching Band, MC Comedy, Mime Team Ministry, Mural Projects, Outreach Music & Drama, Theatre Productions, Vocal Ensembles, Women's Concert Choir, and the list goes on...

**MALONE**  
COLLEGE  
CHRIST'S KINGDOM FIRST

[www.malone.edu](http://www.malone.edu)

Why is this man smiling?



*Because his customers are too.*

If you haven't been smiling lately, please call Akron Publishing Company for your next custom publishing project. We will produce brochures, magazines, catalogs, directories, books and more... all of them from concept to completion. Akron Publishing Company will be the only call you'll need to make.

**AKRON**  
PUBLISHING COMPANY

phone: 330.929.2703 ▲ fax: 330.923.0856  
e-mail: [akronpublishing@neo.rr.com](mailto:akronpublishing@neo.rr.com)

*We do really good work, so that you'll look really good.*





## Volunteer Opportunities

Complete and detach this form and return it to the Ticket Office or mail to:  
Volunteer Opportunities, 1301 Weathervane Lane, Akron, OH 44313-5186

NAME \_\_\_\_\_

ADDRESS \_\_\_\_\_

CITY \_\_\_\_\_ ZIP \_\_\_\_\_ PHONE \_\_\_\_\_

I am interested in the following areas: (Check as many as you wish)

- |  |  |   |
|--|--|---|
| <input type="checkbox"/> Acting  | <input type="checkbox"/> Costuming     | <input type="checkbox"/> Fund Raising           |
| <input type="checkbox"/> Set Building  | <input type="checkbox"/> Orchestra     | <input type="checkbox"/> Box Office             |
| <input type="checkbox"/> Painting  | <input type="checkbox"/> Sound         | <input type="checkbox"/> House Managing         |
| <input type="checkbox"/> Usher   | <input type="checkbox"/> Lighting      | <input type="checkbox"/> Play Reading/Selection |
| <input type="checkbox"/> Backstage Crew  | <input type="checkbox"/> Classes       | <input type="checkbox"/> Board Membership       |
| <input type="checkbox"/> Other _____   |  |   |
| <input type="checkbox"/> Best time to reach me at the above phone number _____ |  |   |
| <input type="checkbox"/> I am a subscriber.                                    | <input type="checkbox"/> I am a donor. |   |

### I HAVE AN OPINION...

About tonight's play \_\_\_\_\_

\_\_\_\_\_

About the current season \_\_\_\_\_

\_\_\_\_\_

About future seasons \_\_\_\_\_

\_\_\_\_\_

I have a fund-raising idea. \_\_\_\_\_

\_\_\_\_\_

We appreciate, and often respond to, opinions offered about our work. Be sure to fill in your name and address above if you wish a response or would like to be contacted.



## Volunteer Responsibilities

Here's a quick introduction to the responsibilities volunteers undertake to make our shows work. If you'd like to try your hand at any of these jobs, please call us. We'll help you learn! Volunteers with 100 hours or more of service are eligible for a special Weathervane membership!

**\* Stage Management** - Duties include assisting the director throughout the rehearsal period, calling cues, keeping backstage safe and orderly, and coordinating the technical needs of the show with the actors. A great opportunity for those who enjoy planning, communicating and taking charge. Once the director's work is done, it's the Stage Manager who runs each performance.

**\* Set Construction** Use your building skills, carpentry or painting techniques to help make illusion come to life. Help is needed days and evenings.

**\* Costumes** Designers and workers are vital. We invite skilled and unskilled seamstresses to make or alter costumes, create patterns, care for costumes during a show and keep our wardrobe department organized.

**\* Lighting** Experience is a plus, but you can learn by assisting others who know computers and electrical requirements. We'll train eager volunteers to help hang, focus, and add color to lighting instruments. We'll also teach you how to run the light board and follow spots. *Nobody can see the show without you.*

**\* Sound** Create the music and sound effects tapes that enrich the aural envi-

ronment for each show or add "live" backstage sound. Run the sound system for technical rehearsals and productions.

**\* Properties** All the items that help "dress" a set and all those used by actors in rehearsal and performance (from tea sandwiches to "deadly" weapons and "shattering" windowpanes) must be borrowed, built or cooked. Many volunteers are needed to work on each performance.

**\* Office Volunteer** If you enjoy dealing with the public, we can use your help during office hours and on show nights to assist in taking money and answering the phone to take reservations. You may also help with mailings, work with staff, and greet customers and visitors.

**\* Ushering** Welcome audience members with your smile, show them to their seats, pass out programs, and serve refreshments at intermission. Your help is always welcome.

**\* House Manager** This representative greets the audience, tears tickets and guides theater-goers to ushers for seating. You'll work with the stage manager to coordinate the timing of intermissions and remain in the lobby throughout the show to handle any emergency.

## Weathervane Community Playhouse

is a proud member of



Ohio  
Community  
Theatre  
Association





# Luigi's

"An Akron Tradition Since 1949"

- Award Winning Food
- Casual Dining
- Old World Elegance

Featuring Our Famous  
Homemade

- Pizza
- Lasagna
- Antipasto

**OPEN 7 DAYS**  
105 N. MAIN ST.  
**330-253-2999**



*A healthy  
child is  
music to  
our ears.*



Akron  
*Children's*  
Hospital

*Feels Like Family*

One Perkins Square  
Akron, Ohio 44308-1062  
(330) 543-1000  
[www.akronchildrens.org](http://www.akronchildrens.org)



*A* Great  
Night Out  
Deserves  
A Good  
Ending...

Stop at the  
Whistle Stop  
Tavern

Located in Quaker Square  
Downtown Akron  
330.253.5970

Featuring great  
food & drinks

Experience our wine list  
Visit our new and  
unique shops



# Kindermusik®

a good beginning  
never ends

Singing, Movement & Instrument Play,  
Ages infant - 7

Daniel's Music Studio  
BATH • RICHFIELD • FAIRLAWN  
(330) 659-3173  
[www.kindermusikneohio.com](http://www.kindermusikneohio.com)

---

Kindermusik® with Miss Terri  
& Friends  
STOW RETAIL PARK • 4962 DARROW RD.  
Also visit our DrumPlay Store or have  
your Birthday Party with us!  
(330) 655-8499 • (877) 650-8320  
[www.kindermusikwithmissterri.com](http://www.kindermusikwithmissterri.com)

## The CUTLER Family of Companies *Under One Roof...*



CUTLER/GMAC Real Estate,  
Akron/Canton's real estate leader, is a  
diversified one-stop, total homeownership  
company. Whether you are looking for  
a new home or preparing to sell one, we  
can make your dreams a reality, with the  
convenience of a real estate, mortgage  
and title company under one roof.

**CUTLER**  **GMAC**  
Real Estate

TITLE AGENCY **1** MORTGAGE **1** ONE

[www.cutlergmac.com](http://www.cutlergmac.com)

*Allows You Time To Enjoy What's Really Important.*



# FIVE *At* FIVE

CONCERTS OF UNIVERSAL INSPIRATION  
ON SUNDAY AFTERNOONS AT 5 O'CLOCK

SEPTEMBER 21, 2003

THOMAS HEYWOOD

AUSTRALIAN ORGAN VIRTUOSO

OCTOBER 19, 2003

FAURÉ REQUIEM & ORGAN SOLOS

WESTMINSTER CHOIR, FIRESTONE SYMPHONIC CHOIR,  
CHAMBER ORCHESTRA AND ORGAN

DECEMBER 7, 2003

AMAH! AND THE NIGHT VISITORS

A FULLY STAGED CHRISTMAS CLASSIC

FEBRUARY 29, 2004

OHIO STATE UNIVERSITY MEN'S GLEE CLUB

A SPECTACULAR 90 VOICE MEN'S CHORUS

MAY 9, 2004

HITS FROM THE OPERATIC & BROADWAY STAGE

PERFORMED IN WRIGHT-HERBERICH HALL

WESTMINSTER PRESBYTERIAN CHURCH

1250 WEST EXCHANGE STREET, AKRON, OHIO

330.836.2226

## Beware of the Dreaded No-Show

Have you ever seen empty seats at a sold out sporting event or concert? Weathervane has the same problem. Single-ticket buyers and subscribers who may have exchanged from another performance wonder why they weren't given those prime empty seats for the evening.

When you buy a subscription, you are promising to come to the theater for that ticketed performance and we hold your seat(s). These subscription seats are held until intermission. This, additionally, makes it impossible to tell if a performance is ever really sold out and annoys ticket buyers who see that they could have been seated in a better spot.

Subscribers: Please call the Ticket Office at 836-2626 if you will not make your ticketed performance. Thanks.

## Weathervane Traditions

**Meet the cast** Many cast members spend a few minutes in the lobby area to meet and greet friends after performances. It's your chance to thank them for their performance.

**Intermission Tea** is served with our compliments by our volunteers. Soft drinks are available at a nominal cost.

**Opening Night Receptions** welcome audiences on first Friday performances. We provide light snacks and refreshments after the show so you can share in the celebration.

**For your sweet tooth** snacks are available for purchase before the show and during intermission. Refreshments (other than water) are not permitted in the auditorium.



## Who Gets On Stage?

Our volunteer performers come from throughout greater Akron and Northeastern Ohio. They've committed themselves to four or more weeks of rehearsals plus performances. Their greatest reward is your applause.

Many performers come with substantial theatrical experience. Others are new to the stage. Auditions are open to all and our non-traditional casting policy opens the way for many performance opportunities. Except in cases where race, gender, age or disability is essential to the play, all roles are cast on the basis of talent.

Local newspapers carry audition dates and times or call Weathervane at 330-836-2626 to be added to the audition mailing list. Some directors prefer to set appointments for audition times and may ask that you come prepared with a brief

monologue, improvisational subject or musical number. Copies of plays scheduled or audition scenes are often available for a nominal deposit.

When you arrive at the theater on audition nights, you'll learn about the rehearsal and performance schedule. You may also register as a production volunteer if you're interested in learning about the technical opportunities in the show.

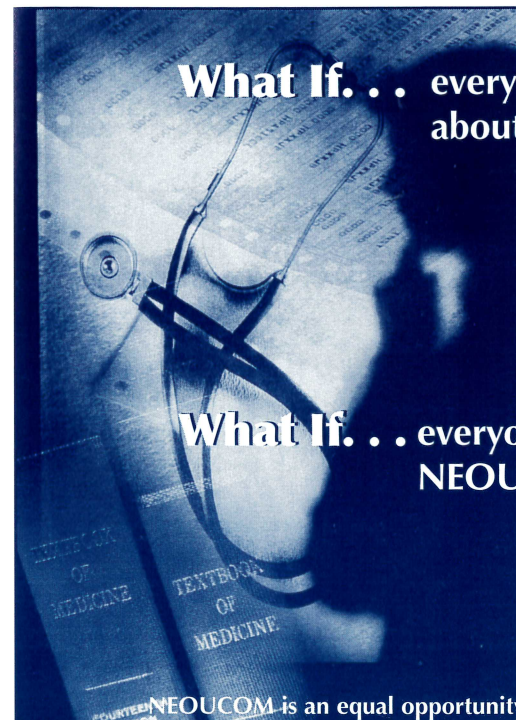
You may be asked to return for callbacks and will be notified of the director's cast selection as soon as possible. Please note that if you don't win the role you've wanted so badly, it may not necessarily reflect on your talent. The director's choice of cast members must take many factors into account to develop the proper "relationships," style and reality of the ensemble. Don't be discouraged.

What If... every doctor knew as much about caring as curing?

At NEOUCOM, we teach not only the science of medicine, but also the art of healing.

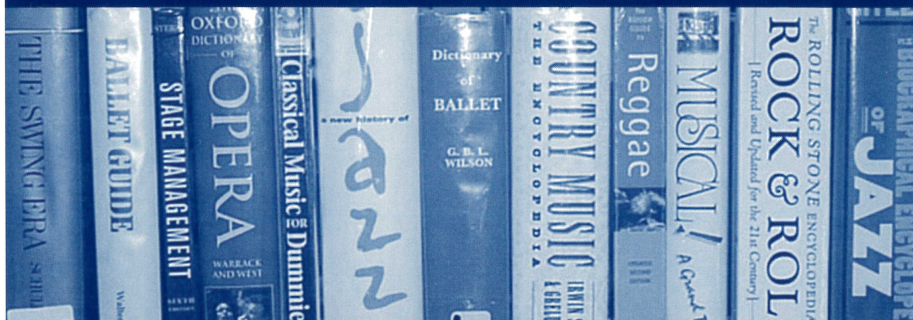
What If... everyone had a NEOUCOM doctor?

**NEOUCOM**  
NORTHEASTERN OHIO UNIVERSITIES  
COLLEGE OF MEDICINE  
[www.neoucom.edu](http://www.neoucom.edu)

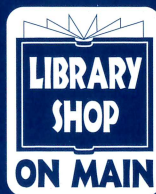




# Top-shelf arts and culture (Within easy reach)



Main Library, Mobile Services  
and 17 branches located  
throughout Summit County  
330-643-9000  
[www.ascpl.lib.oh.us](http://www.ascpl.lib.oh.us)



Your source for novel gifts  
and gently used books  
Operated by the  
Friends of Main Library  
1040 E. Tallmadge Ave.,  
Akron 330-643-9070  
[www.lsom.org](http://www.lsom.org)



## Hiram College

Intimate Learning. Global Reach.

Experience our distinctive curriculum. Hiram has two different learning formats for students—for young adults, the **traditional college** offers our renowned academic program in a residential environment; for adult learners, the **Weekend College** lets students earn their degrees with minimal interference in work/family responsibilities.

Call 1.800.362.5280 or visit [www.hiram.edu](http://www.hiram.edu).  
For information on the Weekend College program, please call 330.569.5161.



# Fun and Free for the Whole Family!

## 2003-2004 Exhibitions

**Hans Hofmann: Selections from the  
Berkeley Art Museum Collection**  
September 20, 2003 – January 3, 2004

**Jim Dine Prints: 1985-2000**  
January 17 – March 27, 2004

**Akron  
Art  
Museum**

70 East Market Street  
Akron, Ohio 44308-2084  
330.376.9185  
[www.akronartmuseum.org](http://www.akronartmuseum.org)

# The arts start here.

Art starts with inspiration.  
Inspiration starts with new experiences.  
New experiences are our business.  
That's the Akron Advantage.

[www.uakron.edu](http://www.uakron.edu)



*"At The University of Akron, we have set the stage for world-class excellence in the arts. By developing new generations of artists, partnering with arts organizations, and providing local venues for internationally-acclaimed theatrical and musical productions, we continue to help define the social and cultural landscape of Northern Ohio."*

- Luis M. Proenza  
President, The University of Akron

# The University of Akron

The University of Akron is an Equal Education and Employment Institution