

The perfect blend of skill,
talent and collaboration.



At KeyBank, we're proud to support the the Weathervane Playhouse in it's display of skill and talent. And we're proud to pool our skills to bring you financial services that support your talents.



1.800.KEY2YOU®
Key.com

Achieve anything.

Key.com is a service mark of KeyCorp.



WEATHERVANE COMMUNITY PLAYHOUSE

Dee Baker
Wata Princes
Where Theater Comes Alive!

2003-2004
Sixty-Ninth Season



A Lesson Before Dying

*Adapted by Romulus Linney
from the novel by Ernest Gaines*

production no. 506

M A I N S T A G E

March 10 - 28, 2004

Give yourself a hand!

For supporting the arts in Northeast Ohio

If not for you,
these performers would be playing
to an empty house.

The arts serve many millions of people every year, contribute well over a billion dollars to the economy, and employ hundreds of thousands of creative and technical workers. Approximately a thousand people are employed in the arts in Akron alone!

Consider the benefits of involvement in the arts: Those involved in music training or music appreciation score higher in verbal and math tests, and training in music contributes to self-satisfaction and success in later life. Theater, music, dance, and visual arts programs can act to connect diverse segments of a community by providing education and encouraging dialogue, thus promoting understanding. People exposed to the arts throughout their lives read more, perform more community service, and vote more often than those who do not participate in the arts.

Thank you for supporting the arts. Thank you for helping to make your community a better place to live.



Audio-Technica U.S., Inc., Stow, Ohio

Audio and video products for home and professional use.

www.audio-technica.com

Copyright ©2003 Audio-Technica U.S., Inc. and its licensors. All rights reserved.



THE HAGEN ROWLAND GROUP
FINANCIAL CONSULTANTS

*Producing financial
performance, professional
and personal.*

BRUCE ROWLAND
INVESTMENTS • INSURANCE

330.836.9245

Fax: 330.836.6114

E-Mail: browland@ameritech.net

Securities Offered Through:
WRP INVESTMENTS, INC.
MEMBER: NASD, SIPC



Weathervane Community Playhouse

1301 Weathervane Lane, Akron, OH 44313-5186

330-836-2626 ♦ Fax 300-873-2150 ♦ wcpakron@aol.com ♦ www.weathervaneplayhouse.com

Charlie and the Chocolate Factory

by Richard R. George, Novel by Roald Dahl

July 26 - Aug. 10, 2003 (*YT)

My Way

A Musical Tribute to Frank Sinatra

Compiled by David Grapes and Todd Olson

September 10 - October 5, 2003

Proof

by David Auburn

October 15 - November 2, 2003

Joseph

and the Amazing Technicolor Dreamcoat

by Tim Rice and Andrew Lloyd Webber

Nov. 22 - Dec. 21, 2003 (*YT)

The Mystery of Irma Vep

by Charles Ludlam

January 14 - February 1, 2004

The Crucible

by Arthur Miller

February 14 - 28, 2004 (*YT)

A Lesson Before Dying

by Romulus Linney, Novel by Ernest Gaines

March 10 - 28, 2004

The Dinner Party

by Neil Simon

April 14 - May 9, 2004

Pinocchio

Performed by the Piper Puppets
presented by WCP Women's Board

May 8, 2004 (*YT)

Nunsense

by Dan Goggin

June 9 - July 3, 2004

*Youth/Family Production

Patron Information

* **Emergency Exits** located at the left front of the auditorium and left side of the lobby. Front door and lobby doors will also be used.

* **Restrooms** Located in lobby alcove - wheelchair accessible.

* **Handicapped Services** Seating for a limited number of wheelchairs. Please notify in advance if needed.

* **Assistive Listening Devices** Available thanks to the generosity of Virginia and J. Robert Wilson.

* **Patrons:** Expecting a call? Leave name and seat number with the House Manager. Please turn off your cell phones, pagers and audible watches.

* **Beverages and Food** may not be taken into the auditorium during performances.

* **Use of Cameras and Recording Devices** is prohibited during performances.

* **Curtain time** Wed./Thurs. - 7:30 p.m., Fri./Sat. - 8 p.m. and Sun. - 2:30 p.m.

* **Latecomers** will be seated at the rear of the auditorium during a suitable break in the play if space is available and may take their reserved seats after intermission.

* **Exiting the Theater** Please remain seated until the auditorium lights are on. Parking lot illumination assures that getting to your car will be easy and secure.

* **Smoking** is permitted outside the building.

* **Lost and Found** items will be held at the Ticket Office until claimed.

* **Comments** from audience members are always welcomed with interest. Please feel free to write to Weathervane to express your views and opinions about our productions. Send your comments to: *Executive Director, Weathervane Community Playhouse.*



Weathervane appreciates the continuing strong support of individuals, corporations, foundations and other donors who help finance the theater's operations, capital improvements and endowment program. Weathervane is classified as a 501(c)(3) organization and contributions are tax deductible. Following are some of the many ways in which you can take pride in your support of the art of theater in our community.

* **Become a Weathervane Member**

Your annual support makes you a voting member of Weathervane Community Playhouse. You'll receive discounts on educational programs and other benefits, based on the membership level you choose. Members are invited to Weathervane's annual meeting and to other special events. Memberships are renewable annually, beginning at \$75 (Contributing), and continuing at Sustaining, Patron, Silver, Gold, Platinum and Diamond Levels. Membership is actively solicited in the fall but is accepted at any time. Members are recognized in the Playbill.

* **Give a Special Gift To Say You Care**

Special donations may be made at any time to memorialize a friend or relative whose interest in Weathervane was significant to his or her life. You may also recognize and celebrate important dates or current achievements of relatives, friends or associates.

* **Remember Weathervane in Your Will**

What better way to carry on your tradition of support to Weathervane than by a planned gift. By taking advantage of the tax laws which encourage charitable giving, the U.S. Government will share in the cost of your gift to Weathervane. Your gift can fulfill a specific purpose or project while providing your estate with tax savings. To help ensure that Weathervane will continue, please contact our Executive Director for more information.

* **Check For Matching Gifts**

Many national and local corporations will

match your donations to Weathervane, increasing your generosity to the theater. Please check whether or not your company participates in such a program.

* **Designate Gifts To Local Foundations**

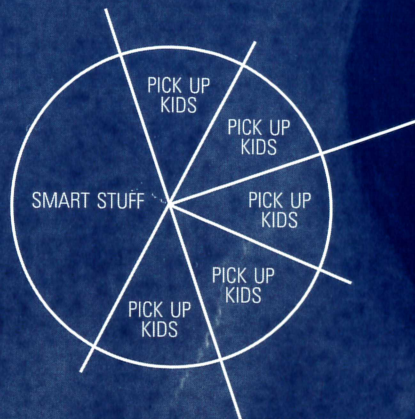
Several of this area's larger foundations accept memorial and tribute gifts in the name of specific organizations such as Weathervane Community Playhouse. Such gifts help assure continuing grants to the theater's operations and special projects. We are enormously grateful for the impressive history of foundation support in this community.

* **Sponsor or Underwrite a Production**

Our productions may be underwritten by local corporations or foundations. Benefits can include private "command performances" and special receptions for employees and friends when your business chooses this important method of support. Please call 330-836-2626. We'd like to discuss this kind of opportunity with you.

* **Capital Project**

The construction segment of the Capital Project included a scene shop with basement storage, a 2nd-floor classroom and rehearsal hall, soundproof production booth, elevator and fly gallery pocket above the stage and installation of the rigging system for the fly gallery. Donations for Stage Two of the project continue to purchase classroom furnishings, update the lighting system, renovate the lobby and replenish the Capital Fund for maintenance and repairs.



NPR. Classical.
Other smart stuff.
89.7 WKSU

A Service of Kent State University

Akron-Canton's
only
television
newscast
is here!

Watch Your
Newscast
Weeknights
at 6:30

Proud sponsor of
Weathervane
Community Playhouse

PAX23
news
UGA2
BX53



ERIC MANSFIELD
anchors Akron-Canton news



MARK NOLAN
forecasts Akron-Canton weather



JIM DONOVAN
covers Akron-Canton sports



History *From the Barn to the Valley*



From 1935 until 1951, Weathervane was housed in a modest carriage house barn on Marshall Avenue. Some recall its cramped quarters but especially the energy and devotion of four ladies, Grace Hower Crawford, Laurine Schwan, Helen Troesch and Muriel MacLachlan, who believed that Akron deserved the best in theater and that volunteers could make it happen. A lobby plaque lists the names of other founders who shared their commitment. The rooftop weathervane gave the theater its name and logotype character, the Chanticleer.

In 1951, the organization renovated a building on Copley Road and, from 1960 - 1992, Bob Belfance served as director. Along with custodian/ticket office manag-

er, Nora Scott, the two-person staff relied on volunteer support. Paid guest directors and children's theater instructors served in part-time positions. Ticket receipts and donations helped meet expenses and created a modest endowment. A fund-raising drive resulted in construction of the present 263-seat facility which opened in 1970. Thanks to Grace Crawford's legacy, the mortgage has been paid off.

Construction made possible by the most recent Capital Campaign added classrooms, rehearsal space, scene shop, additional prop storage, elevator, library, fly gallery and fly system, a sound-proof production booth and a costume workshop.

Weathervane celebrated its 500th Mainstage production, *The Laramie Project*, during the 2002-2003 season. Thanks for being a part of our history.



Theater Education

Youth Education

Weathervane offers professionally taught classes in acting, stagecraft, musical theatre and improvisation for children up to age 18. Fall and spring classes are held on Saturdays and two-week **Hands on Theater (H.O.T.)** workshops are planned throughout the summer. The cost is minimal with a limited number of scholarships available and discounted fees for Weathervane members.

Children may also audition for roles in many productions. Casting is not dependent upon class enrollment. Participation is an extension of valuable training in every facet of production from the audition process to technical and performance experience. Family members may also have learning opportunities by participating in such productions.

Weathervane works with area schools by providing outreach information and study guides as part of our **Project STAGE** program, which brings public and private school students to see as many as five productions each season. This season, *Proof*, *The Crucible* and *A Lesson*

Before Dying will be featured in the **Project STAGE** events. Tickets are only \$8.

For information about classes or audition schedules for Youth Productions, please call our Education Coordinator at 330-836-2323.

Adult Classes

Professionally taught Adult Theatre classes include Classical Drama, Improvisation, Scenic Design, Stage Lighting and Directing. These classes help actors expand their performance and public speaking skills.

Learning On the Job

Every production participant becomes part of Weathervane's continuing education process. You'll learn from more experienced volunteers who share the creation of production and performance. If you don't have time for structured classes, sign on to become a crew member or performer. We'll help you expand your knowledge of backstage and onstage responsibilities.



Reserve: A Great Place to Be ... an exceptional place to learn

WESTERN RESERVE ACADEMY

Open House
Saturday,
Nov. 8, 2003 &
April 24, 2004

Visit classes, tour the campus and meet faculty and students. Families and prospective students of all ages welcome.

Check in between
8:45 a.m. and 11:00 a.m.
John D. Ong Library
College Street Entrance



Featured in U.S. News
& World Report

For further information: Visit Reserve
at www.wra.net or call 330.650.9717

WESTERN RESERVE ACADEMY
Hudson, Ohio 44236 • Day and Boarding 9-12

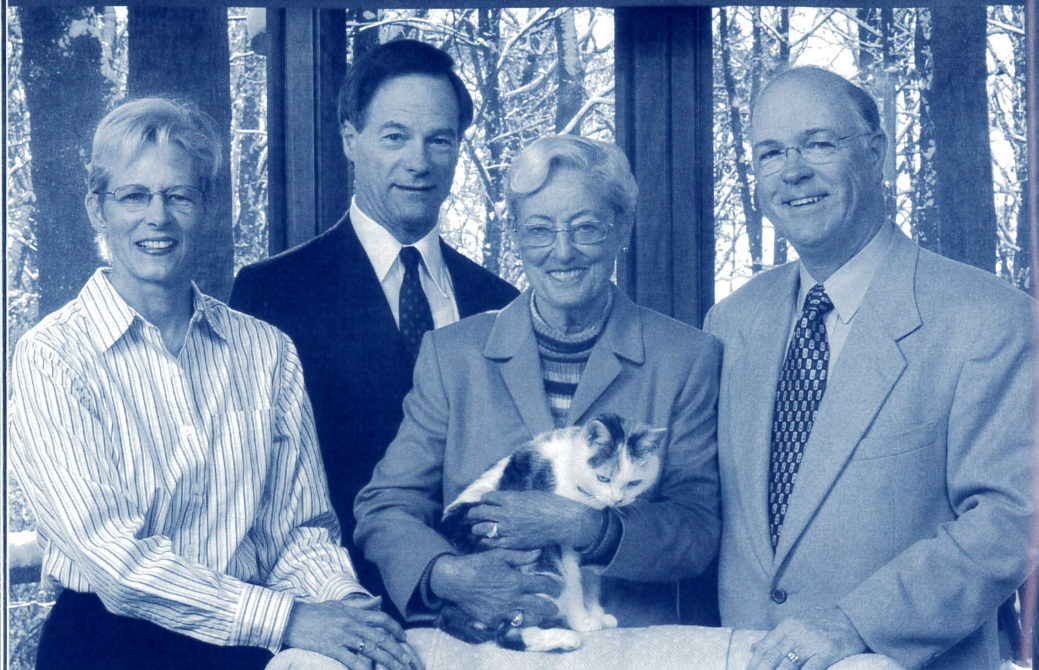


The Pathway to Quality Education

Preschool through Grade Eight

2315 Ira Road in Bath, Ohio near Hale Farm 330-666-1118 Visit our Web site at www.oldtrail.org





Generations of Giving.

The McDowell family's generosity and vision has transcended generations, establishing a permanent and living legacy for The University of Akron.

*From left to right:
Peggy McDowell Lloyd, C. Blake McDowell, III,
Beatrice McDowell (with her cat, Tammy),
Philip A. Lloyd, '72*

You can create an enduring legacy through a bequest to The University of Akron.

A gift through your Will or Trust helps students and provides lasting recognition for your family for generations.

To structure a charitable bequest that ensures the greatest tax results for your estate and celebrates your support of The University of Akron, please call:

David P. Horn
Director of Planned Giving
The University of Akron
330-972-6870
or e-mail: dhorn@uakron.edu

The University of Akron

The University of Akron is an Equal Education and Employment Institution.

THE POWER OF



FIRSTENERGY RECOGNIZES THE POWER OF THE ARTS AND ITS ABILITY TO ENHANCE THE QUALITY OF LIFE FOR EVERYONE IN OUR COMMUNITY.

WE'RE PROUD TO HELP SUPPORT PERFORMANCES THAT ENRICH US ALL.

FirstEnergy

2635

Ohio Arts Council

Building Ohio Through the Arts

Supporting organizations with state tax dollars to encourage economic growth, educational excellence and cultural enrichment.



Ohio Arts Council
727 East Main Street
Columbus OH
43205-1796
614/466-2613
www.oac.state.oh.us

Visit today.

Arts in Ohio.com

Find what, when and where arts and cultural events are happening in Ohio...instantly! Just search the Event Finder by whatever criteria are most important to you.



Ticket Information

*** Tickets** Purchase in person or charge by phone with Visa, MasterCard or Discover at 330-836-2626, Tuesdays through Fridays 10 a.m. to 5:30 p.m. and on performance Saturdays from 11:30 a.m. to 5:30 p.m. *Reservations are also required when using coupons from your Weathervane Super Coupon Book, complimentary tickets or coupons offered from any other cooperating arts organization.* Please arrive 20 minutes before curtain time to pick up your tickets. Unclaimed tickets will be released for sale five minutes prior to curtain at the discretion of the Box Office Manager and volunteers.

*** Special seating** Please inform us if you have seating preferences due to visual, auditory or other physical needs. Please remember orders are filled on a first-come, first-served basis with season subscribers and advanced group sales taking first priority.

*** Season Subscriber Exchanges** must be phoned in at least 24 hours prior to

your originally scheduled performance. We can't always guarantee the same seats but we'll give you the closest available replacements. An upgrade fee applies when changing from a Preview Night. *If you cannot use your subscription seats, please call us at least 24 hours in advance to release them. We will recognize this as a donation.*

*** Student Rush Tickets** go on sale 30 minutes before curtain time. Students with a valid ID may purchase any remaining tickets for half price. Rush tickets cannot be reserved in advance.

*** Discounted Group Reservations** are available for groups of 15 or more. Call Weathervane at 330-836-2626 to learn how you can entertain friends, associates, or clients with a night at the theater or to plan a fund-raising event for larger groups.

*** Gift Certificates** are available at any time in any amount you choose.

*** Recycle your playbills** Anyone who doesn't wish to keep the playbill may drop it in our recycling box.

Money-saving super coupon books are available all season.



Super Coupon Books

Help You Save!

Where Theater Comes Alive!

Booklets contain eight coupons and serve as pre-paid admissions for main-stage series productions. Use them one-at-a-time or all at once!

WEST SIDE VOCAL ACADEMY

Professional Teachers — Professional Results

Voice — Acting

Ron Hazelett

Bass

330-864-0660

Susan Wallin

Soprano

Charting new paths towards the future of the Arts.

Look smart. Be smart.



Turning heads through smart design

MINX DESIGN

330.762.4126 • 1.888.GET.MINX

*The tradition continues...
distinctive retirement living*

The Merriman



The Merriman, our inaugural season, 2003 — 2004

For 52 years our home has provided a place for area seniors to receive loving care. With our commitment to preserving this tradition comes our ongoing promise to residents, families, staff, and the community that The Merriman will provide exceptional care and distinctive retirement living.

Now accepting reservations for gracious accommodations:

- Nursing Care
- Memory Care
- Gourmet Dining
- Restorative Care
- Assisted Living
- Senior Day Activities
- Wellness Programs
- Physical Therapy

For a personal tour of our distinctive residence, contact Barb Mullin at (330) 762-9341.

The Merriman, 209 Merriman Road, Akron Ohio 44303

**Supporting inspirational performances
delivered by exceptional people.**

www.brunercox.com



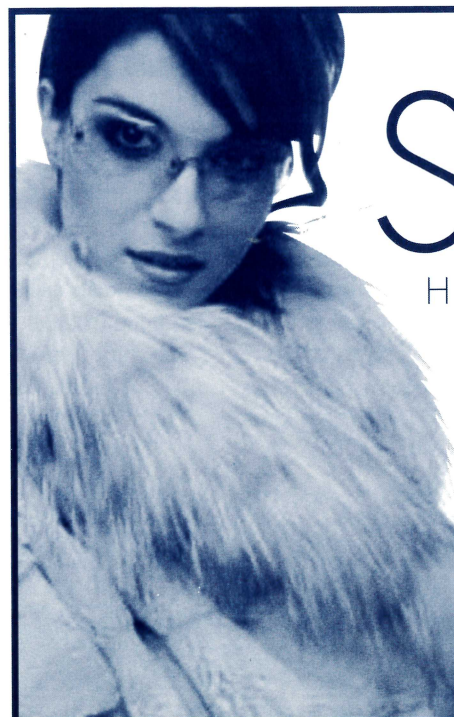
At Bruner-Cox LLP, we believe the expertise, integrity and continuity of our people allow us to deliver innovative accounting and consulting solutions to every client relationship.

Experience the value of our people.

BRUNER-COX LLP

Business Consultants & Certified Public Accountants

Our people. Your solutions.



SEXY

High fashion furs at a price
that will turn you on.



104 Summit Mall
Mon/Thu 10am-8pm • Tues/Wed/Fri 10am-6pm
Sat 10pm-5pm • Sun Closed • 330-867-2771



Women's Board

The Women's Board was formed in 1938 to "offer voluntary service and financial assistance to the Playhouse." Women's Board has energized youth education programs, sponsored productions, spearheaded fund raisers and paid for many of the amenities we appreciate in the Green Room/kitchen. Members of this active group are invaluable as hostesses, office helpers and backstage. The Women's Board sponsors an annual puppet presentation for children and also operates the Gift Boutique and Bank One Art Gallery.

New members are welcomed.

2003-2004 Officers

Thelma Coss	President	Jane Krimmer	Recording Sec.
Randie Sass	First Vice President	Nancy Zeigler	Treasurer
Jean Questel ..	Second Vice President	Evelyn Stiggers ..	Assistant Treasurer
Jacqui Sukie	Corresponding Sec.		

Committee Chairs

Art Gallery	Marci Paolucci	Hospitality	Marta Williger
Boutique	Mary Wolfman		Janet Budai
	Betty Watterson	Newsletters	Jacqui Sukie
Boutique Treasurer	Barbara O'Connor		Pat Weill
Costumes	Janet Heilmeier	Puppet Show	Jill Forster
	Henrietta Cook		Leslie Lund
Hostesses	Patrice Bechtol	Membership	Jacqui Sukie
	Pat Obenour		Thelma Coss
Cast Suppers	Wendy Cooley	House Committee	Jane Krimmer
			Betty Williams

Boutique Treasures

Our lobby Gift Boutique is a fund-raising project of our WeatherVane Women's Board. Shop from one hour before curtain time or during intermission for great gift items. Prices are extremely reasonable and the items on sale include a

delightful variety from clowns and animal figures to pens, pins and earrings. Our Boutique volunteers will also assist you with information on purchasing gallery art works.



Building the Arts

Akron Art Museum
Blossom Music Center
Inventure Place
WeatherVane Playhouse



123 South Miller Road, Akron, Ohio 44333 Phone: 330-867-2400



WeatherVane's Professional Staff

ELYNMARIE KAZLE (Executive Director) begins her seventh season for WCP. She has spent 26 years in theater, first as a stage manager then in producing, fundraising and as a public relations rep for theaters across the US. She's had the pleasure of working with a wide range of artists from Mikhail Baryshnikov to Michael Korie, Ed Asner to Chita Rivera, in theaters such as San Diego's Old Globe, Sacramento Theater Company, LA Classical Ballet, Opera Columbus, Great Lakes (Shakespeare) and Brooklyn Academy of Music. Akron was important to Elynmarie early in her career when she served as lighting apprentice to Tom Skelton and Ohio Ballet in the early 1980s. Her diverse experience in Marketing/PR includes a stint with the Wall Street Journal. She is currently VP of Membership and Development of USITT and the founder of the nationally-known Stage Management Mentoring Project. She lives in Akron with her husband Mark and son Banno.

JANIS L. HARCAR (Director of Marketing & Development) holds an M.A. in Arts Administration from The University of Akron and a B.S. in Music Education from Kent State University and has been a WeatherVane staff member since 1993. She serves as the Artistic Director of the Ravenna Community Choir and Director of St. Paul Lutheran Church Choir also in Ravenna. At the 2003 Chanticleer Ceremonies, Jan was honored with the Trustees Award.

ALAN SCOTT FERRALL (Scenic Designer/Technical Director) began at WeatherVane under the tutelage of John R. Thomas. Learning the skills necessary to work full-time in the theater, Scott was hired at Cuyahoga Falls High School as auditorium manager, where he spent the next six years. During that time, he was awarded a

Design Excellence citation from USITT for *Carousel*, and a place in *Who's Who Among America's Teachers*. He has also designed for many local high schools as well as for The Players Guild, Cleveland Signstage and Channels 45/49. Scott has earned three Chanticleer Awards -- one as stage manager for *Fences*, the others as lighting co-designer for *A Man for All Seasons* and lighting designer for *The Laramie Project*. Scott also takes great pleasure in writing the end-of-the-season revue for The Not-Ready-for-Mainstage Players who appear at our annual Chanticleer Awards Dinner.

SEAN McCONAHA (Director of Education and Producer of Youth/Family Productions) holds a dual major in Theater Performance and Pre-Law from West Virginia Wesleyan College and an M.A. in Theater from The University of Akron. He is a free-lance actor and director throughout Northeastern Ohio. Sean directed the OCTA award-winning production of *Romeo and Juliet* as well as the 1999-2000 season's Chanticleer winner for Best Production, *The King of the Kosher Grocers*. He lives in Bolivar with wife, Beth, daughters, Leda and Delaney, and twins born June 4, 2003, Zoe Grace and Griffin Dean.

KEITH D. CAMPBELL (Supervisor Front-of-House & Patron Services) holds a B.A. in English from The University of Akron, where he served as editor of *The Buchtelite* and sang with the Akron Symphony Chorus. During the summers of 1995 and 1996, he interned in the box office at Porthouse Theatre Company. Keith has done post-baccalaureate studies in Arts Administration at The University of Akron. This is his eighth season at WCP.

JOHN COTTER (Business and Public Relations Assistant) has the duties that come with helping Jan and Keith in the Marketing and Box Office areas. He also serves on



Professional Staff continued

Weathervane's Production Board as Co-Chair of Auditions. John is a retiree of 36 years with Ohio Edison and has been a long-time volunteer of the Playhouse having served on the Production Board as its President and Co-Chair of Properties. He has also worked backstage for many productions and has won Chanticleers for Properties Design for four productions, his most recent being design of *Proof* in 2003. He is, however, most proud of his three grandchildren, Dana, Nicholas and Kristin.

KATHRYN A. KOHL (Assistant Technical Director) holds a degree in Elementary Education from BGSU and a Master of Business Management Degree from Aurora College in Aurora, IL. She began her theater career as a volunteer on many lighting and set construction crews. She served as Properties Designer for *Dracula* and won a Chanticleer for proper-

ties co-design of *The Philadelphia Story*. Kathy also volunteers as Resident Master Carpenter and Master Painter for the Theatre Department at Firestone High School. She lives in West Akron with husband Doug and their three children, Stephanie, Zachary, and Katie.

DREAJEAN L. BROWN (Data Services Manager) holds a Master of Science Degree in Technical Education and a Bachelor of Science Degree in Education from The University of Akron. She was recently promoted to the position of Director of Administration for the Ohio & Erie Canal Corridor Coalition. She is an active member of Delta Sigma Theta Sorority, Inc. Akron Alumnae Chapter. This season she eagerly welcomed a new granddaughter and a new son-in-law. Her major priority for this season is to spoil her grandchildren.

Many Thanks to Our Season Sponsors

Summit County Children Services
Sponsor for *Charlie & the Chocolate Factory*
County of Summit Alcohol, Drug
Addiction & Mental Health Services
Board Sponsor for *Proof*
Summa Health System Foundation
Sponsor for *The Dinner Party*
Akron Publishing Company - Ad Sales
Minx Design - Graphic Designer

Ohio Arts Council - Season Sponsor
PAX TV 23 - Season Sponsor
Greystone Hall -- Reception Sponsor
The Grotto on Merriman -- Reception
Sponsor
SAM'S Club -- Reception Sponsor
Tiffany's Bakery -- Opening Night Cakes
WKSU 89.7 FM -- Season Sponsor
WRMR 1420 AM -- Radio Sponsor for
My Way



Costumes • Wigs • Hats
Make Up • Santa & Bunny Suits
Mardi Gras Beads
St. Patrick's Day • Luau
Book Reports

10% Off your next purchase
thru 09/30/04

4130 State Road • Cuyahoga Falls
330-923-3339



Community
Cash Back Program

September 7 - May 15

Bring your Acme register tapes in to John Cotter and we'll receive a 1% return on them. This great program was developed by the Acme stores to help community organizations.



Board of Trustees

Weathervane Community Playhouse is a non-profit 501(c)(3) corporation operated by a board of volunteer trustees representative of the general community. Regular monthly meetings of the Board of Trustees are open.

Officers

George Moxon President	Jim Horvath Assistant Treasurer
Richard Worswick First V. President	William Glaeser Secretary
Mary Beth Kluge Second V. President	Margaret J. Dietz Historian
Laura Kerchner Treasurer	Steven P. Schmidt Immed. Past Pres.

2003-2004 Trustees

Nancy Ashcom	Michael Davis	Dr. Amy Lee	Jack Steele
Kathy Ashcroft	Dr. Rozelle Duncan	Karen Lefton	Thomas Stephan
Barbara Baskin	Christopher Esker	Myron Lewis	Elinore Stormer
Clarence F. Carlson	Jon Fiume	John Morgan	Mary Warhol
Thelma Coss	Roy Hartz	Doug Mory	Mark A. Zimmerman
Paul Daum, Ph.D.	Jeffrey Houck	Sheila Motter	

Advisory Board Members

Mary Adams	W. Scott Emerick	Libby Jacobs	Dr. Susan Speers
Chuck Ayers	Helen Fleming	Eric Jones	Bob Velotta
Bunny Ballance	Jill Forster	Ardith M. Keck	Shari Whitfield
Madeline Bozzelli	Dr. Penelope Frese	Dede Klein	Mary Whitmer
Stanley Brandt	Ian Haberman	Eileen Moushey	Mary Wolfman
Ann Brennan	Richard Harris III	Jim Nilsen	Mel Wolfman
Nancy Cates	Bob Hasman	Jo Ann Oelschlager	Mona Wolfman
Ron Cimini	Marilyn Heagerty	Margo Snider	June Zeno
Frank Comunale			

Production Board

Mark A. Zimmerman -- Chair

Auditions	M.J. Coulson & John Cotter
WOMEN'S BOARD Costume Shop	Sandra Harding
FIRST ENERGY Lighting Dept.	Mark A. Zimmerman
Properties	John Riazzi
Sound	Charles Korecki & Tom C. Barnes
Stage Management	Nikki Rafferty
<i>Ex-Officio:</i>	
Women's Board Representative	Thelma Coss
Producer of Youth/Family Productions	Sean McConaha
Technical Director	Alan Scott Ferrall
Salon Series Coordinators	Tom Abdo & Suzanne Smith
Play Selection Chair	Beverly Smith
Executive Director	Elynmarie Kazle
House Managers	John Cotter



Our Generous Donors

Weathervane Playhouse gratefully acknowledges the financial support of our corporate, foundation and individual members. Their Membership helps keep admission prices low and helps us to maintain the high standards of production you've come to associate with Weathervane. This list is updated throughout the season.

SUPER FOUNDERS (Gifts of \$10,000+)

City of Akron	Ohio Arts Council
The GAR Foundation	Weathervane Women's Board
Northern Ohio Golf Charities	

FOUNDER'S CIRCLE (Gifts of \$5,000+)

Akron Community Foundation	John A. McAlonan Fund
Alpha Phi Alpha Fraternity, Inc.	OMNOVA Solutions Foundation
Bank One	Charles E. & Mabel M. Ritchie
Ann & Dave Brennan	Memorial Foundation
Bridgestone/Firestone Trust	Sisler McFawn Foundation
Eileen & H. Peter Burg	Lloyd L. & Louise K. Smith
Mary B. Demetros Foundation	Memorial Foundation

PLATINUM MEMBERS (Gifts of \$1,000+)

INDIVIDUALS

Fred & Francia Albrecht	Mr. & Mrs. George Moxon*
Family of Roger G. Berk, Sr.	Thomas R. Trotter & Martha Kaltenbach
Elynmarie Kazle & Mark A. Zimmerman	underwrites costumes for <i>Nunsense</i>

CORPORATIONS & FOUNDATIONS

Babcox Publications	C. Blake & Beatrice McDowell Foundation
Glenn R. & Alice B. Boggess Memorial Foundation	Michelson Foundation
Brennan Family Foundation	Walter Mirapaul Foundation
Lisle M. Buckingham Fund of ACF	Laura R. & Lucian Q. Moffitt Foundation
FirstEnergy Foundation	The RC & Katherine Musson Charitable Foundation
The Goodyear Tire & Rubber Company	M. G. O'Neil Foundation
Robert A. Kutz Charitable Trust	TARGET

GOLD MEMBERS (Gifts of \$500 - \$999)

INDIVIDUALS

Susan & Patrick Baker	Janet & Jim Heilmeier	David & Orlene Makinson
Juanita & Chic Carlson	Dr. Jack & Libby Jacobs	Jo Ann Oelschlager
John Grafton & Richard Worswick*	Kathy & Doug Kohl	Steven P. Schmidt, PhD*
Eileen & Ralph Greene	Dr. & Mrs. Edward Koosed	Mary & Mel Wolfman
	Richard & Leslie Lund	

CORPORATIONS & FOUNDATIONS

A. Schulman	Myers Industries, Inc.
FirstMerit Bank	National City Bank
InfoCision Management Corp.	Summit County Internists, Inc.

**Denotes Board of Trustees*



Our Generous Donors continued

SILVER MEMBERS (Gifts of \$250 - \$499)

INDIVIDUALS

David Ashe	Barry Friedman	Barbara B. O'Connor
Juanitsa & Chic Carlson*	Roy & Mary Hartz*	John O'Neill
Mildred Collis	Jim & Charlotte Horvath*	Judy & Roger Read
Dr. Paul Daum*	Jeffrey P. Houck*	Dr. Douglas & Jane Sanders
Margaret J. Dietz*	Dr. Amy Lee*	Connie & Bob Velotta
Dr. Richard & Mary Beth Ellison	Dr. Douglas & Karen Lefton*	Richard Worswick* & John Grafton
W. Scott & Sandra Emerick	Samuel I. Levey	
Helen & Chisna Fleming	Patricia Obenour	

CORPORATIONS & FOUNDATIONS

Air Enterprises	Ernst & Young LLP	Roetzel & Andress
Annaco	FW Albrecht Family Foundation	Steere Enterprises
Bober, Markey, Fedorovich	GoJo Industries	Welly Building Company
Business Interiors	Jeter Systems	Zuckerman Consulting Group
Cedarwood Companies	Maynard Family Foundation	
Charter One Bank	Panhellenic Council of Akron	

PATRON MEMBERS (Gifts of \$150 - \$249)

INDIVIDUALS

Drs. Morton & Miriam Agins	Dr. Lowell & Francine Gordon	Doug Mory*
Nancy Ashcom*	Mary & William Glaeser*	Dr. George & Janet Nankervis
Kathleen Ashcroft*	Ginny & Jay Hershey	Dr. Luis & Theresa Proenza
Mr. & Mrs. Lance C. Bergstrom	Meg Hopp	Sandy & Sam Smith
Vicki & Dave Brockman	Mrs. Harvey Karam	Susan D. Speers, Ph.D.
Curt Brown	Laura & Jeff Kerchner*	Jack Steele*
Rozelle Duncan, Ph.D.*	Mary Beth Kluge*	Thomas Stephan*
Christopher Esker*	William W. & Anne M. Lowery	Judge & Mrs. Harold White
Dr. & Mrs. Stephen A. Farkas	Mrs. C. Blake McDowell, Jr.	Marta J. Williger
The Farmer Family	Tina & John Mogen	Mona Wolfman

CORPORATIONS & FOUNDATIONS

Akron Publishing Company	Database Marketing	Mogen Real Estate
Akron Tool & Die	The Davey Tree Expert Co.	North Akron Savings
Amer Insurance	Flexsys America	Peters, Tschantz & Bandwen
Arther Printing	GBC Design, Inc.	The Ruhlin Company
Brockman, Coats, Gedelian	Hitchcock Fleming & Assoc.	Smithers Scientific Services
Bruner-Cox LLP	Kastner, Westman & Wilkins, LLC	Yoder Brothers, Inc.
ComDoc, Inc.		

SUSTAINING MEMBERS (Gifts of \$100-\$149)

INDIVIDUALS

John & Kathy Arther	Paul & Ruth Eisenzimmer	Mrs. Harvey Karam
Mary & Rollie Bauer	Barry Friedman	Stacia & Mike Kaschak
Doug & Mary Ann Bell	Diana & John Gayer	Dr. C. William & Ardith M. Keck
Curt Brown	Tatiana & Richard Harris	Richard & Judy Kotick
John & Maryanne Cotter	Ellen & Karl Hay	Shelley & Thomas Koutnik
Bea Dagilis	Marilyn Heagerty	Dr. Donald & Wendy MacKay
Jane & John DeYoung	Kathryn M. Hunter	Martha Mazak



Our Generous Donors continued

SUSTAINING MEMBERS - Individuals Continued

Margaret & John McBride
Lynn & Edward Metzger
Mr. & Mrs. Richard D. Miller
Virginia D. Moline
Norbert J. Moran
Gloria T. Reich
Jay Sigler

Lois & Paul Simmons
Mr. & Mrs. Richey Smith
Mr. & Mrs. Edgar Steinmark
Dr. & Mrs. Robert Stone
Paula & John Troche
Manny Underdown
Linda Waite

Pat & Leo Weill
Mary K. Whitmer & Stanley Brandt
Mr. & Mrs. Jack Wigley
Libby & Jeff Wilson
B.J. Zeigler
Dan & June Zeno

CORPORATIONS & FOUNDATIONS

Akrochem Corporation
Cohen & Company

Holland Oil Company

Maynard Family Foundation

CONTRIBUTING MEMBERS (Gifts of \$75 - \$99)

INDIVIDUALS

Carol Boyd
Norma Bucey
Bridget & Steve Dolin
Raleigh & Gloria Drennon
Suzy Elderkin
Carla & John Kachmar
Mildred & Arthur Kattan
Dr. & Mrs. Lawrence Kaye

Dr. & Mrs. Raymond Kimberly
Myron J. Lewis
Jo McGarvey
Arlene McKinnon
The Moushey Family
Dr. Joseph Rapotec
Bertie & Milton Sass
Susan & David Scarponi

Barbara & Russell Stevic
Edith & Norbert Weisend
Linda Wernitz &
Robert E. Cunningham
Dr. Jeff Yatsu
Laurie Zuckerman &
Steve Johnson

FRIENDS (Non-Voting)

Madeline & Libert Bozzelli
Chick Master Incubator Company
Mr. & Mrs. Gerald A. Colonna
Rebecca DeBolt
Janet & Donne Clark

Mr. & Mrs. Michael DelMedico
Emily Fleisher
George J. Gauthier
Atha Hayes
General Metals Powder Company

Jewell Cotter Sausser
Ruth & Saul Senser
Christine Stewart
Mr. & Mrs. Gale Urda
A.E. & L.C. Wallach

SPECIAL 100-HOUR MEMBERS

Bill Berry
Sarah Kormushoff

Joanne S. Reed
Robert H. Reynolds

Sonny Russo

IN-KIND DONATIONS

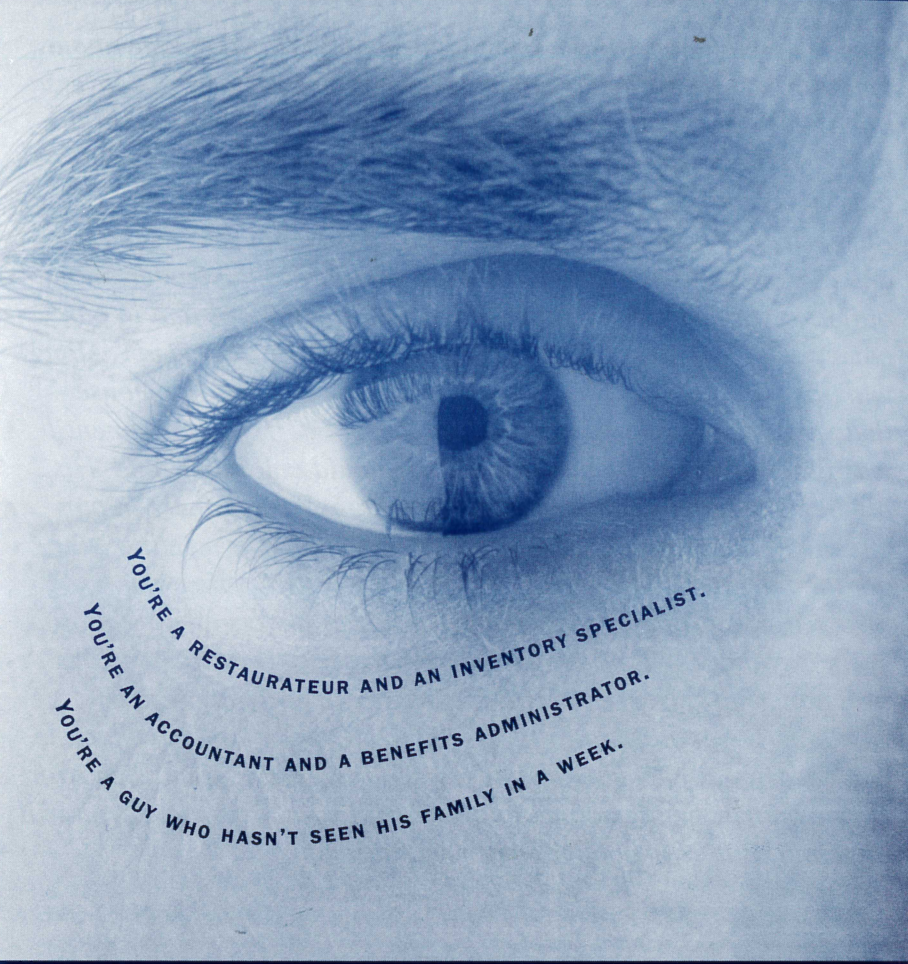
The Kormushoff Family
Sandridge Foods

Frank C. Comunale

Richard Worswick

WeatherVane Community Playhouse gratefully acknowledges **IBM, SBC, FirstEnergy, The BF Goodrich Company, Key Foundation, The Goodyear Tire & Rubber Company and Illinois Tool Works Foundation** for contributions made through matching gifts programs.

WeatherVane Community Playhouse gratefully acknowledges **The Sisler McFawn Foundation, Akron Community Foundation, OMNOVA Solutions Foundation and Target Stores** for contributions for Project STAGE presentations and Youth Outreach Programs.




YOU'RE A RESTAURATEUR AND AN INVENTORY SPECIALIST.
YOU'RE AN ACCOUNTANT AND A BENEFITS ADMINISTRATOR.
YOU'RE A GUY WHO HASN'T SEEN HIS FAMILY IN A WEEK.

We're the bank who can help.

Second National Bank can handle all of your company's financial and banking needs. One of our advisors will be your inventory specialist, your accountant, your benefits administrator, your payroll manager, and your stress reliever. Which means you can go easily about your workday. And still

make it a workday. **Smart Business Services** *The people making banking better.*

SECOND NATIONAL BANK

Member FDIC 



Welcome from the Executive Director

I was having dinner with a friend recently and he asked me about Pete Burg. It seems Pete's name comes up in nearly every conversation that I have had in the last several weeks. As I think about this play and the lesson we can learn from it, I am struck by the loss that this community feels from the departure of a man such as Pete Burg. He was a man I looked up to for his examples in leadership and community. Even by virtue of his position as the leader of one of the most important companies in the United States and in our community, I more keenly feel the loss of Pete Burg the man. Along with his wife, Eileen, he was an avid attendee of our Playhouse – their regular seats predate my tenure here. Yet, from the moment I was first introduced to him, I felt that I could call him friend. His big heart led him to take on many community causes here in our city and gave them life. Sitting with Pete in a donor meeting, you got the feeling that he was doing you a favor by getting you involved. His example as a leader will never be forgotten. I am sad every day that I will no longer be able to seek his advice, feel his firm handshake, or see the twinkle in his eye as he and Eileen would arrive at our door. I like to think of him in a place where he can occasionally look on us and hopefully approve of our behavior. He was a true gentleman and a wonderful man. Like me, Akron will miss him. But he will surely never be forgotten.

Elynmarie Kazle

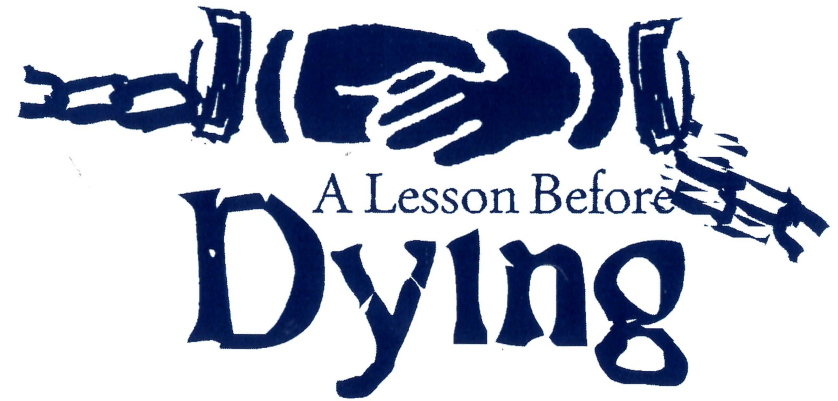
Memorial Contributions were made to Weathervane Playhouse
in honor of **H. Peter Burg** by

The Moushey Family
Margaret J. Dietz
Elynmarie Kazle & Mark A. Zimmerman
Mary Kate Clancy
Helen & C.H. Fleming



Weathervane Community Playhouse

69th Season – 2003-2004 – Production #506
March 10 - 28, 2004



by Romulus Linney
based on the novel by Ernest J. Gaines

Directed by
Sean McConaha

Stage Manager
Maryanne Arcuri Cotter

Costume Designer
Sandra Harding

Sound Designers
Tom C. Barnes
Sean McConaha

Scenic & Lighting Designer
Alan Scott Ferrall

Properties Designer
Dionne Atchison

Assistant Stage Manager
John A. Cotter

A Lesson Before Dying is produced by special arrangement with
Dramatists Play Service, Inc., 440 Park Avenue South, New York, N.Y. 10016.

Weathervane productions are sponsored in part by



Weathervane Community Playhouse, 1301 Weathervane Lane, Akron, OH 44313-5186
Ticket Office: 330-836-2626 – Fax: 330-873-2150 – Email: wcpakron@aol.com
www.weathervaneplayhouse.com



About the Play and Playwright

A Lesson Before Dying, set in 1948 backwoods Louisiana, tells the story of Grant Wiggins, an educated black man and teacher who finds himself an unwilling mentor to Jefferson, a hapless black teenager sentenced to die for being in the wrong place at the wrong time. During Jefferson's murder trial, his lawyer likens the ignorant man to a hog. Faced with futility, Jefferson declares that is exactly how he will act, like a hog, and the powers of court can drag him to slaughter. Miss Emma who raised him finds this attitude intolerable and calls upon Grant, a former student, to teach Jefferson how to meet his end with dignity. Grant is anxious to escape the Jim Crow atmosphere of Alabama and go north. His sweetheart, Vivian, encourages him to stay to help the young man stand tall when his time comes. After eventually earning Jefferson's trust, it's the teacher who learns a lesson about dignity, humility and responsibility. Oprah Winfrey gave Gaines' novel prominence in 1997. Romulus Linney then adapted it for the stage.

A Lesson Before Dying was commissioned from the playwright by The Alabama Shakespeare Festival (Kent Thompson, Artistic Director) with the participation of Ernest J. Gaines, author of the novel. It opened there on January 21, 2000.

A Lesson Before Dying premiered in New York in the Peter Norton Space by the Signature Theatre Company (James Houghton, Founding Artistic Director; Bruce Whitacre, Managing Director) on September 17, 2000.

About the Playwright

Romulus Linney told an interviewer that the South produces so many good writers because Southerners like to talk. "So little Southern boys sit around and listen to people express themselves rather flamboyantly in speech. You develop an ear for speech." That ear hears in each of Linney's 20 plays which include *The Love Suicide at Scofield Barracks*, *The Sorrows of Frederick*, *Childe Byron*, *Tennessee*, and *Holy Ghosts*. He graduated with degrees from Oberlin College and Yale School of Drama, then wrote two novels, **Heathen Valley** and **Slowly, by this Hand Unfurled**. He found himself turning the latter novel into a play and then continued writing plays. He is also an actor, director and teacher. Linney says there are three "primal needs of human beings: food, sex, and rewriting somebody else's play." He turned Ernest J. Gaines' novel, which won the National Book Critics Circle Award for fiction in 1993, into *A Lesson Before Dying*. Linney and Gaines have been friends for 25 years, and both have Southern roots. The dialogue is authentic.

A Lesson Before Dying is a Project STAGE Production. Teacher and student study guides are available for classroom use. Special ticket prices are available for weekday, daytime performances. In-class discussions can be arranged. Project STAGE is supported in part by The Sisler McFawn Foundation, Akron Community Foundation, OMNOVA Solutions Foundation and Target Stores.



A Lesson Before Dying -- Cast

Paul Bonin	Sean Derry
Emma Glenn	Taba Aleem
Grant Wiggins	Tom C. Barnes
Sam Guidry	Robert Keith
Jefferson	David Lemoyne
Vivian Baptiste	Tina Thompkins
Reverend Ambrose	Myron J. Lewis

Setting: Bayonne, Louisiana.

Time: 1948

There will be a fifteen-minute intermission after Act I

***For your safety, we request that you remain seated until the house lights have come up at intermission and after the curtain call.**

***The use of cameras, recording equipment and laser pointers is forbidden during this performance.**

***As a courtesy to fellow audience members, please make sure that cell phones and pagers are turned off during the performance.**

***Please do not bring food or drink in the auditorium.**

***NOTE: In case of an emergency in which the performance cannot continue, Calamity Vouchers will be issued for a future performance. Thank you.**

Join Us for the Story of a Lifetime!

FROM THE DEAD SEA SCROLLS TO THE FORBIDDEN BOOK

Coming to Akron March 16-April 18, 2004

Mon.-Sat. 9am-9pm, Sun. Noon-9pm

John S. Knight Center • 77 E. Mill St.

Hosted by:

for the Benefit of:

FIRSTMERIT.

MAKE-A-WISH.

Make plans to experience one of the most impressive collections ever assembled to bring 5,000 years of history to life. Get a rare glimpse of more than a dozen fragments of the Dead Sea Scrolls and other religious treasures ranging from **actual artifacts from the time of Noah** (3000 B.C.), to a 1611 First Edition first issue of **The King James Bible**, to a 5,000-year-old **pictographic clay tablet**. This exhibit is the story of the written origins of where the Bible came from and the many manifestations of what it has become. World-renowned academic scholars will speak on various dates throughout the exhibit.



Appearing Live
One Night Only!

Wed., March 17, 7:00 pm Signature Sound Quartet

Special Combo Ticket: \$20, includes entrance to exhibit

- Voted Horizon Group of the Year SN Fan Awards '03
- Featuring Ernie Haase of the Cathedrals, voted Favorite Tenor, SN Fan Awards '03. Also featuring Tim Duncan, Ryan Seaton, Doug Anderson and Roy Webb
- Debut song was a top ten hit

www.TheScrolls.com

FOR EXHIBIT OR
CONCERT TICKETS

1-888-362-4253



A Lesson Before Dying -- Director

Sean McConaha is Weathervane's Director of Education and Producer of Youth/Family Productions. He has a dual major in Theater Performance and Pre-Law from West Virginia Wesleyan College and a Master of Arts degree in Acting and Directing from The University of Akron. He is co-founder of the Prodigal Theater Company, a floating company of graduate school friends which surfaces whenever there is extra time to "put on a play." Their most successful production was David Ives' *All in the Timing* at Cleveland's Cabaret Dada and The Vault in Akron. Sean has played in summer stock and on Weathervane's stage in *The Chosen* and *The Laramie Project*. For Weathervane he directed *The Glass Menagerie* and the Ohio Community Theater Association award-winning production of *Romeo and Juliet* as well as the 1999-2000 season's Chanticleer winner for Best Weathervane Production, *The King of the Kosher Grocers*. He also directed *The Chosen*, *Hamlet* and *Our Town*. He and wife Beth, daughters Leda and Delaney and 9-month-old twins, Griffin and Zoe live in Bolivar.

Director's Notes

If We Must Die

by Claude McKay

If we must die—let it not be like hogs
Hunted and penned in an inglorious spot,
While round us bark the mad and
hungry dogs,
Making their mock at our accursed lot.
If we must die—oh, let us nobly die,
So that our precious blood
may not be shed
In vain; then even the monsters we defy
Shall be constrained to honor us
though dead!
Oh, Kinsmen! We must meet
the common foe;
Though far outnumbered,
let us show us brave,
And for their thousand blows
deal one deathblow!
What though before us lies the open grave?
Like men we'll face the murderous,
cowardly pack,
Pressed to the wall, dying, but fighting back!

Mother to Son

by Langston Hughes

Well, son, I'll tell you:
Life for me ain't been no crystal stair.
It's had tacks in it,
And splinters,
And boards torn up,
And places with no carpet on the floor—
Bare.
But all the time
I've been a-climbin' on,
And reachin' landin's,
And turnin' corners,
And sometimes goin' in the dark
Where there ain't been no light.
So, boy, don't you turn back.
Don't you set down on the steps.
'Cause you finds it's kinder hard.
Don't you fall now—
For I've still goin', honey,
I've still climbin',
And life for me ain't been no crystal stair.

Peace, love and understanding,
Sean McConaha



Danny Ratcliff is an artist emerging on the national scene. Once a well-kept secret of northeastern Ohio, Mr. Ratcliff's art work is now being enjoyed by customers around the globe. But, in his opinion, he has yet to get started. Ratcliff is still committed to raising a family and chooses to stay close to home as much as possible, and it shows in his work.

Ratcliff paints traditional/classical realism with a romantic flair and attempts to explore a full range of values with every project. He has studied at the Cleveland Institute of Art, at Kent State University, and The University of Akron. Ratcliff prefers portraiture, which he considers his forte. During his studies he learned that developing a beautiful painting is almost a prerequisite to painting a good portrait. However, Ratcliff's work demonstrates that he has mastered many art mediums. He uses oil, charcoal and pastels to explore the genre each best suits, whether it is romantic realism or surrealism. Ratcliff's Self Portrait in Oil won third place in the prestigious exhibit at the Akron Society of Artists Fifth Annual Grand Exhibition. His best-known work, "Generations of Love," is a painting of a family reunion that conveys the sustaining joy of kinship, not so much through captured gestures, as through delicate strokes of subdued yellows and greens. Ratcliff states: "I like doing it all. I am passionately attached to the idea of creating a work of art."

Since "Generations of Love" was so successful, he has gone on to paint other family scenes as well as murals in Akron and Cleveland. He has also been doing shows in Columbus, Atlanta, and Detroit, and has been declared "Best of Show" in many instances.

Mr. Ratcliff also has ten prints available of reunion scenes, religious topics, and children. He is interested in starting his own gallery and art school.

A Memorial Contribution was made to Weathervane Playhouse
in honor of **Jane Merriman Lee** by
The Moushey Family

A Memorial Contribution was made to Weathervane Playhouse
in honor of **Paul Mumbauer** by
Dr. & Mrs. John Wegryn

 Weathervane Playhouse is handicapped accessible. Ramps are available to the front doors, auditorium and seating.

 Assistive-listening devices for the hearing impaired are available at the Ticket Office.

 Large-Type program inserts are available at the Ticket Office. These copies are not full playbills but contain information unique to this production. These inserts are photocopied and are available in limited quantity.

 American Sign Language interpretations are scheduled for selected Sunday performances.

 Ohio Relay System 1-800-750-0750 TDD. Call to have your ticket order placed.



SEAN DERRY (Paul Bonin) appeared last April on Weathervane's stage as one of three fast moving actors in *The Complete Works of William Shakespeare, Abridged*. He has also added his talented presence to *The Laramie Project* for which he won a Best Actor Chanticleer Award and he was also in last season's *The Chosen*. Sean is self-employed, a world traveler, and an adventure racer (running, mountain biking, kayaking.) He has a wife, Deanne, two daughters and a newborn son who will, we hope, keep this busy actor in the Akron area. His training comes from the American Academy of Dramatic Arts, New York City, the Loft Studio and the Bobbie Chance Studios in Los Angeles. His other stage performances occurred in New York City where he appeared as Chris in *All My Sons* and also in *Extremities*, *Bury the Dead*, *Golden Boy*, *The Girl on the Via Flaminia* and *Rape of the Belt*. His goals in life are to be an unconditional loving husband and father, a caring and helpful neighbor and a working actor who listens sensitively, reacts truthfully, and is vulnerable "in the moment."

TABA ALEEM (Emma Glenn) is a social services educator at East Akron Community House. She has a Bachelors degree from Hunter College, CUNY, and a Masters degree from The University of Akron. She was trained in New York at the Afro-American Studio for Acting and Speech and appeared in many of its productions. After rearing four children, she returned to this area and worked with the African Community Theatre at Kent State University appearing in several plays including *A Long Time Since Yesterday* as Laveer (1992) and *Panzy* (1994.) Taba worked with William Lewis in *From the Mississippi Delta*. She played Mom in *The Fences Between* with The Rainbow

Repertory Company and, in May 2001, enjoyed performing as Sojourner Truth and delivering the "Ain't I a Woman?" speech before audiences at the 150th anniversary of the YWCA and the Ohio Women's Rights Convention in Akron. At Weathervane, she played Louise in *Seven Guitars*. She is concerned with HIV/AIDS prevention education/advocacy and has traveled to Ghana in West Africa.

TOM C. BARNES (Grant Wiggins/Sound Co-Designer) is no stranger to Weathervane's stage. He played Crooks in *Of Mice and Men* for which he received an OCTA Merit in Acting award, and was also seen or heard in *The King of the Kosher Grocers*, *God's Favorite*, *Little Shop of Horrors*, *The African Company Presents Richard III* and *The Piano Lesson*. Tom has played an important part in production at the Playhouse as well. Tom has a Bachelors degree in Mass Media Communications from The University of Akron and is employed with State Farm Insurance as a Senior Structural Estimator.

ROBERT KEITH (Sam Guidry) was last seen at Weathervane as Claudius and the Ghost in the 2003 production of *Hamlet*. But he's been busy as Marley in *A Christmas Carol* at the Players Guild, as Duke Frederick in Kent State University's *As You Like It*, as Uncle Tudy in Actors' Summit *A Child's Christmas in Wales*, and in six ensemble roles in the Magical Theatre's *Poe's Midnight Dreary*. He has a B.F.A. degree in Fine Arts/Theater from Wayne State University and is owner of A-1 Concrete Leveling. He and wife Pattie have a son, Robert Michael.

DAVID LEMOYNE (Jefferson) is very excited to be in his first production at Weathervane Playhouse. He brings years of experience through working as an acting



Callboard Continued...

instructor (ActorsCoach Productions), casting assistant and actor. His most recent production was *Grey Panthers* which was produced by Karamu House. He has also been seen in productions of *You Shouldn't Have Told, Simply Heavenly, To Kill a Mockingbird, The Actor's Nightmare, Rehearsing the Nightmare, The Queen and the Rebels* and many others. He also worked on several feature films and is slated to direct Ken Ludwig's *Lend Me a Tenor* for Brunswick ACT this summer.

TINA THOMPkins (Vivian Baptiste) has a degree in accounting from The University of Akron and is a credit administrator for Trek Diagnostic. She spends much of her free time on stage with Strongsville Little Theater, Cleveland Shakespeare, Red Hen Productions, Kent Stage, The Cleveland Playhouse, Tri-C West, Karamu House and Weathervane. For the Playhouse, she has appeared in *Working, The Odd Couple (female version), The Piano Lesson*, and *Seven Guitars*. You may also see her on TV commercials for Key Bank, Cleveland Clinic,

the Ohio Lottery and the Ohio State Fair. She commutes from Shaker Heights and extends her thanks for your support. Peace, love and soul.

MYRON J. LEWIS (Reverend Ambrose) has just appeared at Weathervane in *Mr. Lewis Rules*, a one-man staging of his experiences in the Akron Juvenile Justice System. He is now an adolescent chemical dependency counselor for the Akron Health Department. He played Boy Willie in the Playhouse production of *The Piano Lesson*, Canewell in *Seven Guitars* and appeared in the award-winning *The Laramie Project*. In 1999 he was cast by the Detroit Theater for the Dramatic Arts in a play that toured South Africa. Lewis owns a small business named Direct Drama that focuses upon conflict resolution through the medium of drama. He is actively involved at St. Phillips Episcopal Church and is interested in Aikido, a martial arts program. He is currently co-directing an independent film with James Hinton called *As Fast As She Can*.



Backstage Callboard

MARYANNE ARCURI COTTER (Stage Manager) has been a devoted Weathervane volunteer since 1984. She worked on every set through 1989 as well as on props, lights or sound crew for every show. She stage-managed at least one show per season for that period and has won Chanticleers for *Master Harold...and the boys, The King of the Kosher Grocers* and *Wit*. She has been a member of the Production Board as head of Stage Managers and has appeared on stage in Weathervane's production of *Daughters* and in the Women's Board production of *Cinderella*. Maryanne has pro-

fessionally stage-managed at the Halle Theater in Mayfield Heights. Recently retired from the Playhouse as Volunteer and Production Coordinator, Maryanne and her husband John live in Akron, have three grown children and three beautiful grandchildren. They have just returned from a month on the Costa del Sol in Spain.

JOHN A. COTTER (Assistant Stage Manager) has handled properties design for *The Chosen, Wit, The King of the Kosher Grocers*, and *The Philadelphia Story* and has won three Chanticleers for his work



Backstage Callboard continued...

with properties. He is assistant business manager for Weathervane having retired from Ohio Edison in 1995. Those beautiful grandchildren he shares with wife Maryanne are named Dana, Nicholas and Kristin.

DIONNE ATCHISON (Properties Design), a Firestone High School senior, played Tituba in *The Crucible* which has just ended its run on Weathervane's stage. She is also a member of the cast of *School House Rock Live, Jr.*, a joint production of Weathervane and Firestone High School Theatre. She has appeared in seven FHS presentations including *Just Passing Through, Limbo* and *Annie Get Your Gun*. She was recently named to **Who's Who of American High School Students**. She is a member of Color Guard, Orchestra, Symphonic Choir and Pep Club. Dionne is an intern at Weathervane.

SANDRA HARDING (Costume Design) has been busy designing costumes for

Youth Theater productions including *Babes in Toyland, Joseph™ and the Amazing Technicolor Dreamcoat, Romeo and Juliet* (for which she received accolades from Ohio Community Theater Association (OCTA), *Anne of Green Gables* and *Hamlet*. She also created costumes for the zany production of *The Complete Works of William Shakespeare Abridged*.

ALAN SCOTT FERRALL (Lighting Design) began his Weathervane career in 1989 as a volunteer building sets and participating on running crews for props, lights and sound. He was seen onstage last season in *Arsenic and Old Lace* and is on staff as Weathervane's Scenic Designer and Technical Director.

TOM C. BARNES (Sound Co-Design) has won chanticleers for his sound designs for *The Chosen, Dracula* and *Communicating Doors*. See cast bios for more.



Greystone Hall & Catering

A fine dining experience for any event

103 S. High Street

Downtown Akron

330-761-1950



Production Team Members & Crews

Alan Scott Ferrall -- Technical Director

Kathy Kohl -- Assistant Technical Director

SET CONSTRUCTION

Ruth Richardson John Keller
Spencer Burke Lauri Agins
Tom Marshall Pete Chiccarino
Kevin Ford Michael Young

SOUND

Michael Young

PROPERTIES

Denise Atchison Elizabeth Heimbaugh
Emily Campbell Robert Hood
Evan Cohen DeShonta Lee
Nate Cohen Ashley Shaw
Alison Cooper Katherine Toushner

LIGHTS

Pete Chiccarino David Ruggles
Spencer Burke Jim Yost

ACKNOWLEDGMENTS

Summit County Sheriff's Office

Robert Keith

Memorial Contributions were made to Weathervane Playhouse
in honor of **Bill Plant** by

Sandra & Mark Auburn	The Moushey Family
Kathryn A. Belfance	Aldah & Tress Pittenger
Mary Jean & Ted Colberg	Marguerite L. Plant
Margaret J. Dietz	Doris Rehm
Helen & C.H. Fleming	Gertrude & John Skelly
Elynmarie Kazle & Mark A. Zimmerman	Nancy & Robert Welch
Martha & Andrew Kochman	Mary & Mel Wolfman
Leslie & Richard Lund	West Elm United Church of Christ
Frances McGovern	

Weatheravane Women's Board

presents



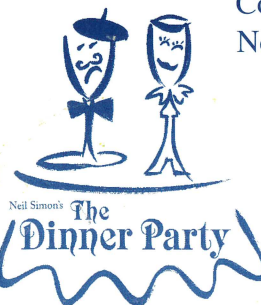
Pinocchio

Saturday, May 8
11 a.m. & 1 p.m.
All seats \$6

Also
M - F, May 3 - 7
at 10 a.m. & 12:30 p.m.



Next On Our Stage



Comedy by
Neil Simon

Sponsored by



Neil Simon's *The Dinner Party*

April 14 - May 9, 2004

A restaurant. Six place settings.
Mysterious invitations to dine. Don't
miss this hilarious party where all the
guests know each other, but not the rea-
son for the dinner or who invited them!

AKRON PREMIERE

Future Events

Saturday, April 3

FAITHFUL FATHERS, STAGE DADS

Charles Dutton -- Guest Speaker

Event focusing on dads and their chil-
dren working in the arts.

Saturday, May 8 at 11 a.m. & 1 p.m.

The Piper Puppets in Pinocchio

Saturday, May 22

MURDER MYSTERY -- DISCO STYLE!

MYSTERIES BY MOUSHEY at

Weathervane -- Fundraiser

June 9 - July 3

Nunsense musical by Dan Goggin

summitartspace
plus



a
partnership

James B. McCarthy
James B. McCarthy, Executive

Weatheravane Playhouse Staff

Elynmarie Kazle -- Executive Director

Keith D. Campbell

Supervisor, Front-of-House
& Patron Relations

Alan Scott Ferrall

Scenic Designer/Technical Director

Janis L. Harcar

Director of Marketing & Development

Sean McConaha

Dir. of Ed./Producer Youth Prod.

John A. Cotter

Business & Public Relations Assistant

Kathy Kohl

Assistant Technical Director

Caroline Klein

Bookkeeper

Dreajean L. Brown

Data Services Manager

Dionne Atchison

Intern

**MAGICAL
THEATRE COMPANY**

Professional Theatre for Young Audiences & Families

2003-2004



Bunnicula

Oct. 17 - 26, 2003



The
**VELVETEEN
RABBIT**

Nov. 28 - Dec. 19, 2003

Saturday 22 January 1994.

*The Diary of
Annie
Frank.*

Jan. 30 - Feb. 1, 2004

Sponsored in part by Bridgestone/Firestone Trust Fund



May 7 - 16, 2004

330/848-3708

565 W Tuscarawas Ave • Downtown Barberton



Coach House Theatre

Akron's 1st Theatre

Crimes of the Heart

by Beth Henley
September 4 - 20, 2003

barefoot in the park

by Neil Simon
November 13 - 29, 2003

A Christmas Carol

by Charles Dickens
Adapted by Mark Dawodzoal
December 13 - 21, 2003

ART

by Yasmina Reza
Translated by Christopher Hampton
February 12 - 28, 2004

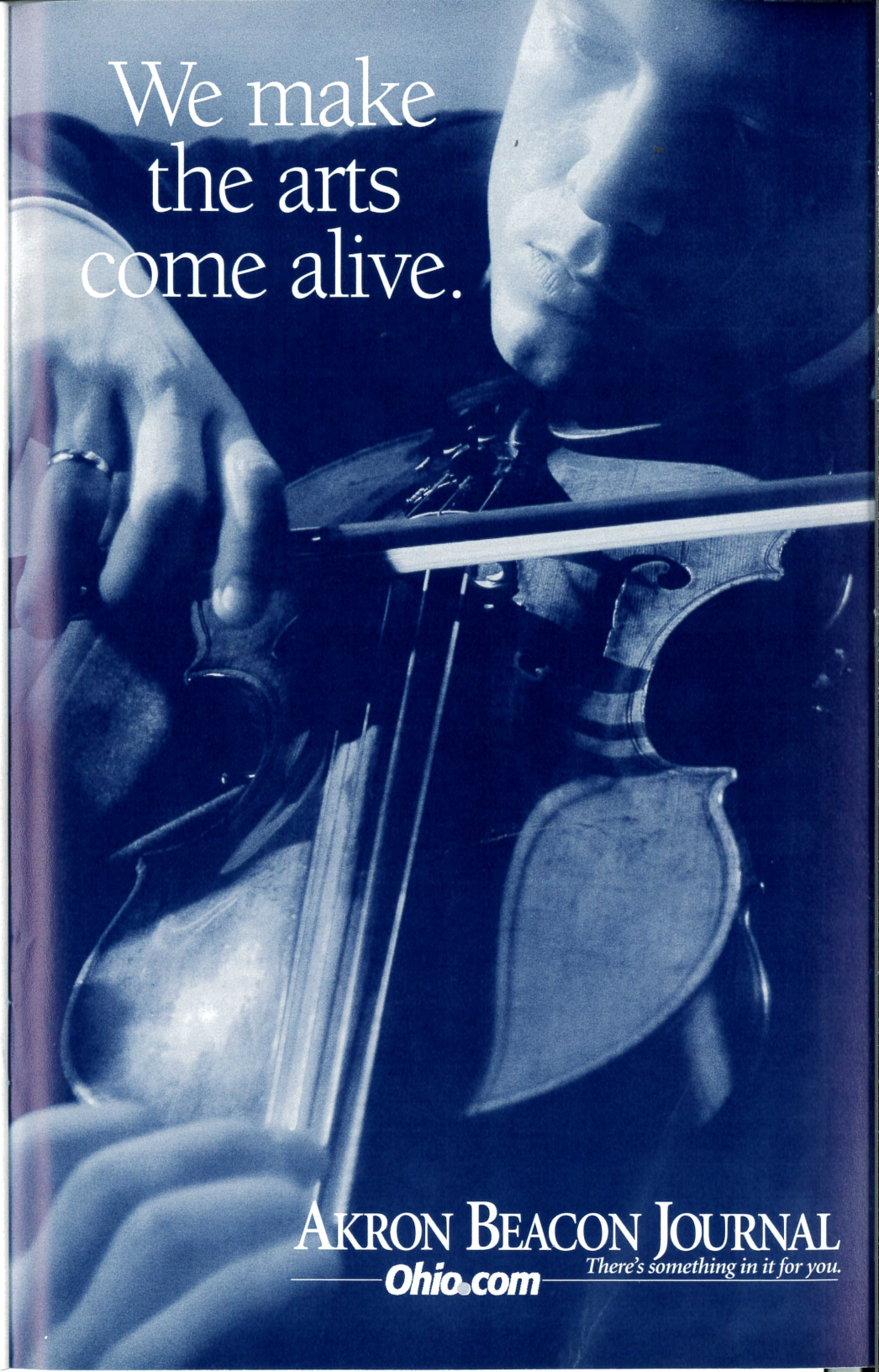
ten little indians

by Agatha Christie
May 6 - 29, 2004

*Join us this season at Coach House
as we share our passion -- without
you, it's just a rehearsal!*

*Jim Fippin
Resident Director*

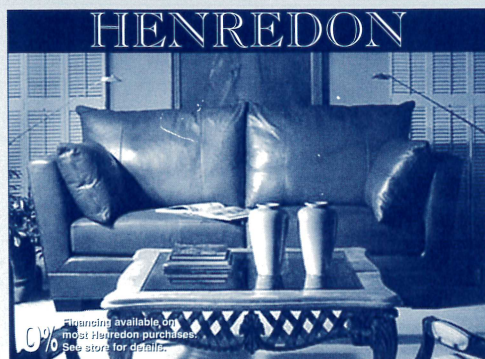
We make
the arts
come alive.



AKRON BEACON JOURNAL
Ohio.com *There's something in it for you.*



The Best Place For Fine Furniture in Greater Akron is at Wayside



- Over 200,000 sq. ft. of inventory.
- Providing friendly, responsive service for over 66 years.
- Professional interior designers on staff.
- We buy and sell for less ... every day.

Fine pieces from these quality manufacturers on display:

Kincaid • Pennsylvania House
Stanley • Lexington • Nautica
Lane • Smith Brothers • Flexsteel
Bob Timberlake • Cochrane
Serta • Broyhill • Clayton Marcus
Canadel • Howard Miller • Hooker
Sumter • Crescent • Dozens More

Visit our newly-opened 10,000 square-foot addition!

Wayside
furniture

"Where You'll Find Better Furniture Priced Lower"

1367 Canton Road Akron On Route 91,
just 1/4 mile south of Route 224
Shop Daily 10 to 9, Saturday 10 to 6, Sunday 1 to 6
Visit our website: www.wayside-furniture.com

330-733-6221
Toll Free 877-499-3968

Stinaff's
SINCE 1935
DATA FORMS & SYSTEMS



We're a great cast
of performers
in meeting your
full color printing and
business form needs!

44 S. Summit St. • Akron, OH 44308
330-434-2106 • Fax 330-434-9376

SPOTLIGHTS

Your Ticket To ENTERTAINMENT

WEST SIDE
Leader

Reaching 43,600 homes
and businesses in one
of America's best
demographic markets.

GREEN
Leader

Reaching over
10,000 homes and
businesses
in the city of Green.

3075 Smith Road Suite 204 • Akron, OH 44333
(330) 665-9595 • Fax: (330) 665-9590

Graf
Growers
Garden Center • Farm Market

1015 White Pond Dr. Akron
330.836.2727
grafgrowers.com

Bring this ad to
Graf Growers & receive
\$5 off \$25
reg. price plant purchase
through 8/31/04

Be Anybody.

Our Lady of the Elms

A Dominican Education for Girls.

Open House

Sun, Sept 14: 1-3 p.m.
Wed, Oct 8: 6-8 p.m.
Sun, Nov 2: 1-3 p.m.
Wed, Mar 31: 6-8 p.m.

For more information, please contact
the Office of Admissions at:

1220 W. Market St.
Akron, Ohio 44313-7108
(330) 867-0918

www.ourladyoftheelms.org

Start Here.



Entertain Your Palette

Specialty foods and wines

Mrs. Ticklemore's Tea Room

Beside the Point Café

Movable Feast box lunches & dinners

Catering

Gift baskets for all occasions

WEST POINT MARKET

1711 West Market St., Akron OH 44313
330-864-2151 / 800-838-2156
Mon-Sat 8am-7pm / Sunday 10am-5pm
www.westpointmarket.com



Where Theater Comes Alive!

ParaJoe's

Sacchini's
SINCE 1932

Dinner before or after the show.

Minutes from

WeatherVane Playhouse
Restaurant - Deli - Wine Shoppe
Banquets - Catering

1561 Akron-Peninsula Road
(330) 923-7999

THE
Grotto
ON MERRIMAN

Seafood & Steaks
at casual
dining prices.

1841 Merriman Rd.
Akron, OH 44313

330.869.4981



Membership Warehouse

FOR BUSINESS & HOME

A SAM'S CLUB Membership gives you access to:

Huge Savings
Brand-name Merchandise
Great member Benefits

3750 "J" West Market St.
Fairlawn, Ohio 44333

Marketing 330-665-5337
Main 330-665-5336
Fax 330-665-5430

Weathervane Playhouse
thanks
Tiffany Bakery
for the beautiful opening
night cakes.

Tiffany's Bakery
Elegant Selections



Wedding Cakes

330-753-0017
2176 Romig Road
Akron, OH 44320



Volunteering at Weathervane

Weathervane began as a volunteer organization and continues its growth thanks to the time and talent that members of our community invest in it. Our on-stage performers have worked long and hard to earn your applause. But their work is supported by many other unseen men and women who've helped build and paint sets, run the lights and sound, make sure that properties and set dressing items are in their proper places and do other backstage labor from stage managing to costuming and make-up. Supporting those who are actively involved in putting on each show are still more volunteers who usher, house manage, sell tickets, keep our office running and serve on our Board of Trustees, Board committees, Production Board and Women's Board.

Their spirit is the backbone of our continuing operations, a valued support on which our professional staff relies.

Each month, we acknowledge the outstanding Volunteers of the Month in our lobby, but those volunteers represent all who commit their time and interest to create a great theater experience for everyone who's come to see this show.

If you have friends or relatives who volunteer generously at Weathervane, we hope you'll take a moment to thank them for their help and their support of the cultural enrichment of our community. Better yet, join them! Call us and we'll help you win your own share of the applause for a "jolly good show," an experience that offers unique challenges with every performance.

Share the Annual Chanticleer Celebration

Shortly after the final production of each season, Weathervane volunteers and friends share an exciting party to acknowledge outstanding performances by performers and technical volunteers. The top performers are awarded rooster statuettes—Chanticleers—in recognition of their work, as voted by Chanticleer "judges." It's a great night to get together, share hopes, fun and festivities and is open to all.

Awards are presented for outstanding lead performances by a male or female

in a drama or comedy, outstanding support performances, and outstanding lead and support in a musical as well as choices in technical achievement. Chanticleers are also awarded for Properties, Lights, Costumes and Sound Design, plus Best Production of the season. In addition to performance and production awards, the event also recognizes the Top 25 outstanding volunteers of the season. We welcome you to take part in the biggest nail-biting party of the year.

GREGG LAUCK

800.795.1366
Fax 330.342.4826



THE GREENHOUSE
FLORIST



Mon. - Fri. 9-5
Sat. - 9-3



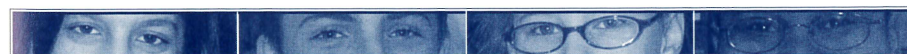
Teleflora

ORCHARD PLAZA * 5825 DARROW RD * HUDSON, OH 44236

Don Drumm Studios & Gallery

It all comes together here.

437 Crouse Street, Akron, OH 44313
330.253.6268
M-F: 10-6, S:10-5



Different stories. Proven approach. Real success. Lawrence School.

Northeast Ohio's leader in learning disabilities education since 1969!

1551 East Wallings Road • Broadview Hts. • 440-526-0717 • www.lawrenceschool.org

MALONE

CHALLENGING
CONTEMPORARY
CHRISTIAN

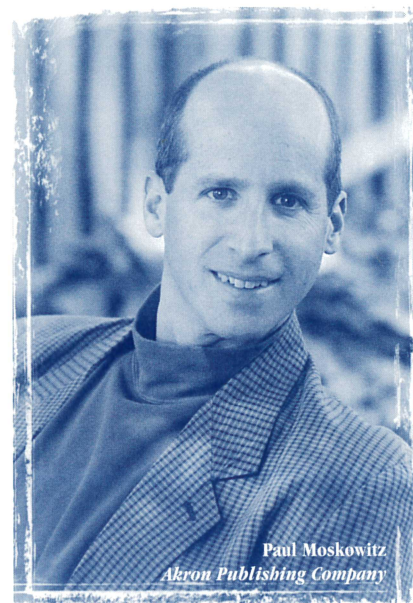
God has blessed us with great powers of expression, and Malone College wants you to appreciate the energy such expression generates. At Malone you can immerse yourself in the arts—just dive in! There are a wide variety of opportunities in the visual arts, music, and theatre, both on and off campus.

Looking for an “arts experience” at Malone?

You don't have to look far: Chancel Players, Chapel Band, Chorale, Concert Band, Instrumental Ensembles, Jazz Band, Marching Band, MC Comedy, Mime Team Ministry, Mural Projects, Outreach Music & Drama, Theatre Productions, Vocal Ensembles, Women's Concert Choir, and the list goes on...

MALONE
COLLEGE
CHRIST'S KINGDOM FIRST
www.malone.edu

Why is this man smiling?



Because his customers are too.

If you haven't been smiling lately, please call Akron Publishing Company for your next custom publishing project. We will produce brochures, magazines, catalogs, directories, books and more... all of them from concept to completion. Akron Publishing Company will be the only call you'll need to make.

AKRON
PUBLISHING COMPANY

phone: 330.929.2703 ▲ fax: 330.923.0856
e-mail: akronpublishing@neo.rr.com

We do really good work, so that you'll look really good.



Volunteer Opportunities

Complete and detach this form and return it to the Ticket Office or mail to:
Volunteer Opportunities, 1301 Weathervane Lane, Akron, OH 44313-5186

NAME _____

ADDRESS _____

CITY _____ ZIP _____ PHONE _____

I am interested in the following areas: (Check as many as you wish)

_____ Acting	_____ Costuming	_____ Fund Raising
_____ Set Building	_____ Orchestra	_____ Box Office
_____ Painting	_____ Sound	_____ House Managing
_____ Usher	_____ Lighting	_____ Play Reading/Selection
_____ Backstage Crew	_____ Classes	_____ Board Membership
_____ Other _____		

_____ Best time to reach me at the above phone number _____

_____ I am a subscriber. _____ I am a donor.

I HAVE AN OPINION...

About tonight's play _____

About the current season _____

About future seasons _____

I have a fund-raising idea. _____

We appreciate, and often respond to, opinions offered about our work. Be sure to fill in your name and address above if you wish a response or would like to be contacted.



Volunteer Responsibilities

Here's a quick introduction to the responsibilities volunteers undertake to make our shows work. If you'd like to try your hand at any of these jobs, please call us. We'll help you learn! Volunteers with 100 hours or more of service are eligible for a special Weathervane membership!

*** Stage Management** - Duties include assisting the director throughout the rehearsal period, calling cues, keeping backstage safe and orderly, and coordinating the technical needs of the show with the actors. A great opportunity for those who enjoy planning, communicating and taking charge. Once the director's work is done, it's the Stage Manager who runs each performance.

*** Set Construction** Use your building skills, carpentry or painting techniques to help make illusion come to life. Help is needed days and evenings.

*** Costumes** Designers and workers are vital. We invite skilled and unskilled seamstresses to make or alter costumes, create patterns, care for costumes during a show and keep our wardrobe department organized.

*** Lighting** Experience is a plus, but you can learn by assisting others who know computers and electrical requirements. We'll train eager volunteers to help hang, focus, and add color to lighting instruments. We'll also teach you how to run the light board and follow spots. *Nobody can see the show without you.*

*** Sound** Create the music and sound effects tapes that enrich the aural envi-

ronment for each show or add "live" backstage sound. Run the sound system for technical rehearsals and productions.

*** Properties** All the items that help "dress" a set and all those used by actors in rehearsal and performance (from tea sandwiches to "deadly" weapons and "shattering" windowpanes) must be borrowed, built or cooked. Many volunteers are needed to work on each performance.

*** Office Volunteer** If you enjoy dealing with the public, we can use your help during office hours and on show nights to assist in taking money and answering the phone to take reservations. You may also help with mailings, work with staff, and greet customers and visitors.

*** Ushering** Welcome audience members with your smile, show them to their seats, pass out programs, and serve refreshments at intermission. Your help is always welcome.

*** House Manager** This representative greets the audience, tears tickets and guides theater-goers to ushers for seating. You'll work with the stage manager to coordinate the timing of intermissions and remain in the lobby throughout the show to handle any emergency.

Weathervane Community Playhouse

is a proud member of



Ohio
Community
Theatre
Association



Luigi's

"An Akron Tradition Since 1949"

- Award Winning Food
- Casual Dining
- Old World Elegance

Featuring Our Famous
Homemade

- Pizza
- Lasagna
- Antipasto

OPEN 7 DAYS
105 N. MAIN ST.
330-253-2999



*A healthy
child is
music to
our ears.*



Akron
Children's
Hospital

Feels Like Family

One Perkins Square
Akron, Ohio 44308-1062
(330) 543-1000
www.akronchildrens.org



Great
Night Out
Deserves
A Good
Ending...

Stop at the
Whistle Stop
Tavern

Located in Quaker Square
Downtown Akron
330.253.5970

Featuring great
food & drinks

Experience our wine list
Visit our new and
unique shops



Kindermusik®

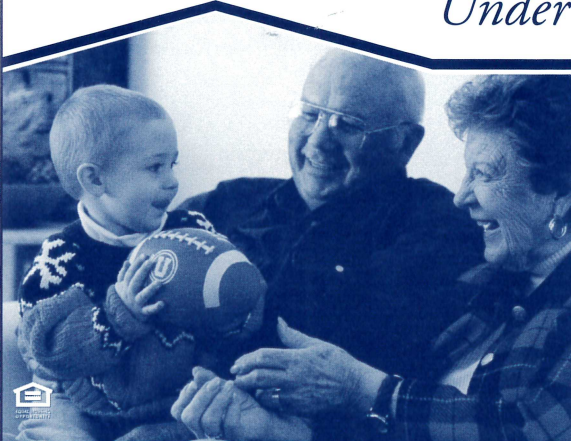
a good beginning
never ends

Singing, Movement & Instrument Play,
Ages infant - 7

Daniel's Music Studio
BATH • RICHFIELD • FAIRLAWN
(330) 659-3173
www.kindermusikneohio.com

**Kindermusik® with Miss Terri
& Friends**
STOW RETAIL PARK • 4962 DARROW RD.
Also visit our DrumPlay Store or have
your Birthday Party with us!
(330) 655-8499 • (877) 650-8320
www.kindermusikwithmissterri.com

The CUTLER Family of Companies *Under One Roof...*



CUTLER/GMAC Real Estate,
Akron/Canton's real estate leader, is a
diversified one-stop, total homeownership
company. Whether you are looking for
a new home or preparing to sell one, we
can make your dreams a reality, with the
convenience of a real estate, mortgage
and title company under one roof.

CUTLER  **Real Estate**

TITLE AGENCY **1** MORTGAGE **1ONE**

www.cutlergmac.com

Allows You Time To Enjoy What's Really Important.

FIVE *At* FIVE

CONCERTS OF UNIVERSAL INSPIRATION
ON SUNDAY AFTERNOONS AT 5 O'CLOCK

SEPTEMBER 21, 2003

THOMAS HEYWOOD

AUSTRALIAN ORGAN VIRTUOSO

OCTOBER 19, 2003

FAURÉ REQUIEM & ORGAN SOLOS

WESTMINSTER CHOIR, FIRESTONE SYMPHONIC CHOIR,
CHAMBER ORCHESTRA AND ORGAN

DECEMBER 7, 2003

AM AHL AND THE NIGHT VISITORS

A FULLY STAGED CHRISTMAS CLASSIC

FEBRUARY 29, 2004

OHIO STATE UNIVERSITY MEN'S GLEE CLUB

A SPECTACULAR 90 VOICE MEN'S CHORUS

MAY 9, 2004

HITS FROM THE OPERATIC & BROADWAY STAGE

PERFORMED IN WRIGHT-HERBERICH HALL

WESTMINSTER PRESBYTERIAN CHURCH
1250 WEST EXCHANGE STREET, AKRON, OHIO
330.836.2226

Beware of the Dreaded No-Show

Have you ever seen empty seats at a *sold out* sporting event or concert? Weathervane has the same problem. Single-ticket buyers and subscribers who may have exchanged from another performance wonder why they weren't given those prime empty seats for the evening.

When you buy a subscription, you are *promising* to come to the theater for that ticketed performance and we hold your seat(s). These subscription seats are held until intermission. This, additionally, makes it impossible to tell if a performance is ever really *sold out* and annoys ticket buyers who see that they could have been seated in a better spot.

Subscribers: Please call the Ticket Office at 836-2626 if you will not make your ticketed performance. Thanks.

Weathervane Traditions

Meet the cast Many cast members spend a few minutes in the lobby area to meet and greet friends after performances. It's your chance to thank them for their performance.

Intermission Tea is served with our compliments by our volunteers. Soft drinks are available at a nominal cost.

Opening Night Receptions welcome audiences on first Friday performances. We provide light snacks and refreshments after the show so you can share in the celebration.

For your sweet tooth snacks are available for purchase before the show and during intermission. Refresh-ments (other than water) are not permitted in the auditorium.



Who Gets On Stage?

Our volunteer performers come from throughout greater Akron and Northeastern Ohio. They've committed themselves to four or more weeks of rehearsals plus performances. Their greatest reward is your applause.

Many performers come with substantial theatrical experience. Others are new to the stage. Auditions are open to all and our non-traditional casting policy opens the way for many performance opportunities. Except in cases where race, gender, age or disability is essential to the play, all roles are cast on the basis of talent.

Local newspapers carry audition dates and times or call Weathervane at 330-836-2626 to be added to the audition mailing list. Some directors prefer to set appointments for audition times and may ask that you come prepared with a brief

monologue, improvisational subject or musical number. Copies of plays scheduled or audition scenes are often available for a nominal deposit.

When you arrive at the theater on audition nights, you'll learn about the rehearsal and performance schedule. You may also register as a production volunteer if you're interested in learning about the technical opportunities in the show.

You may be asked to return for callbacks and will be notified of the director's cast selection as soon as possible. Please note that if you don't win the role you've wanted so badly, it may not necessarily reflect on your talent. The director's choice of cast members must take many factors into account to develop the proper "relationships," style and reality of the ensemble. Don't be discouraged.

What If... every doctor knew as much about caring as curing?

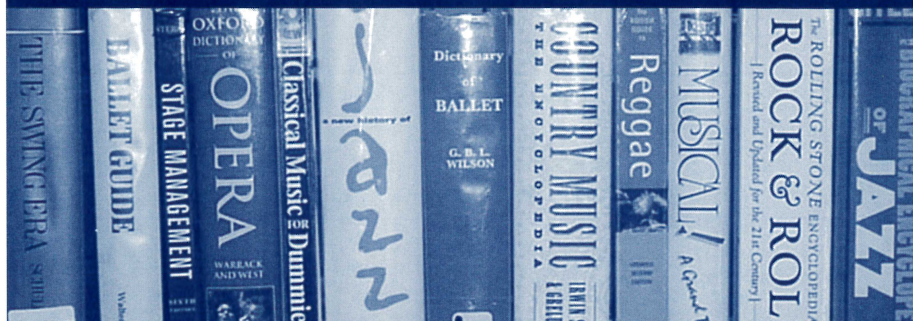
At NEOUCOM, we teach not only the *science* of medicine, but also the *art* of healing.

What If... everyone had a NEOUCOM doctor?

NEOUCOM
NORTHEASTERN OHIO UNIVERSITIES
COLLEGE OF MEDICINE
www.neoucom.edu

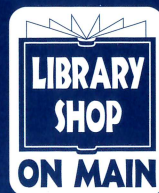
NEOUCOM is an equal opportunity employer and educator.

Top-shelf arts and culture (Within easy reach)



**Akron-Summit County
Public Library**

Main Library, Mobile Services
and 17 branches located
throughout Summit County
330-643-9000
www.ascpl.lib.oh.us



Your source for novel gifts
and gently used books
Operated by the
Friends of Main Library
1040 E. Tallmadge Ave.,
Akron 330-643-9070
www.lsom.org



Hiram College
Hiram College

Intimate Learning. Global Reach.

Experience our distinctive curriculum. Hiram has two different learning formats for students—for young adults, the **traditional college** offers our renowned academic program in a residential environment; for adult learners, the **Weekend College** lets students earn their degrees with minimal interference in work/family responsibilities.

Call 1.800.362.5280 or visit www.hiram.edu.
For information on the Weekend College program, please call 330.569.5161.

Fun and Free
for the Whole Family!



2003-2004 Exhibitions

**Hans Hofmann: Selections from the
Berkeley Art Museum Collection**
September 20, 2003 – January 3, 2004

Jim Dine Prints: 1985-2000
January 17 – March 27, 2004

**Akron
Art
Museum**

70 East Market Street
Akron, Ohio 44308-2084
330.376.9185
www.akronartmuseum.org

The arts
start here.

Art starts with inspiration.
Inspiration starts with new experiences.
New experiences are our business.
That's the Akron Advantage.

www.uakron.edu



"At The University of Akron, we have set the stage for world-class excellence in the arts. By developing new generations of artists, partnering with arts organizations, and providing local venues for internationally-acclaimed theatrical and musical productions, we continue to help define the social and cultural landscape of Northern Ohio."

- Luis M. Proenza
President, The University of Akron

**The
University
of Akron**

The University of Akron is an Equal Education and Employment Institution