

The perfect blend of skill,
talent and collaboration.



At KeyBank, we're proud to support the the Weathervane Playhouse in it's display of skill and talent. And we're proud to pool our skills to bring you financial services that support your talents.



1.800.KEY2YOU®
Key.com

Achieve anything.

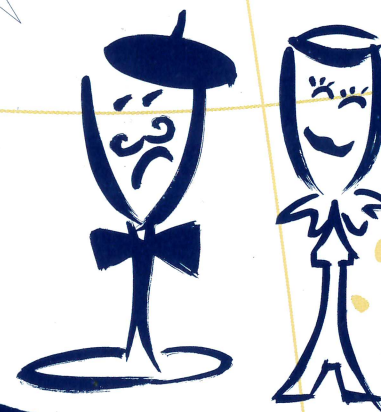
Key.com is a service mark of KeyCorp.



WEATHERVANE COMMUNITY PLAYHOUSE

Drea Greer
Artistic Director
Where Theater Comes Alive!

2003-2004
Sixty-Ninth Season



Neil Simon's

The Dinner Party

production no. 507

M A I N S T A G E

April 14 - May 9, 2004



Give yourself a hand!

For supporting the arts in Northeast Ohio

If not for you,
these performers would be playing
to an empty house.

The arts serve many millions of people every year, contribute well over a billion dollars to the economy, and employ hundreds of thousands of creative and technical workers. Approximately a thousand people are employed in the arts in Akron alone!

Consider the benefits of involvement in the arts: Those involved in music training or music appreciation score higher in verbal and math tests, and training in music contributes to self-satisfaction and success in later life. Theater, music, dance, and visual arts programs can act to connect diverse segments of a community by providing education and encouraging dialogue, thus promoting understanding. People exposed to the arts throughout their lives read more, perform more community service, and vote more often than those who do not participate in the arts.

Thank you for supporting the arts. Thank you for helping to make your community a better place to live.



Audio-Technica U.S., Inc., Stow, Ohio
Audio and video products for home and professional use.
www.audio-technica.com

Copyright ©2003 Audio-Technica U.S., Inc. and its licensors. All rights reserved.



THE HAGEN ROWLAND GROUP
FINANCIAL CONSULTANTS

*Producing financial
performance, professional
and personal.*

BRUCE ROWLAND
INVESTMENTS • INSURANCE

330.836.9245

Fax: 330.836.6114

E-Mail: browland@ameritech.net

Securities Offered Through:
WRP INVESTMENTS, INC.
MEMBER: NASD, SIPC



Weathervane Community Playhouse

1301 Weathervane Lane, Akron, OH 44313-5186

330-836-2626 ♦ Fax 300-873-2150 ♦ wcpakron@aol.com ♦ www.weathervaneplayhouse.com

Charlie and the Chocolate Factory

by Richard R. George, Novel by Roald Dahl

July 26 - Aug. 10, 2003 (*YT)

My Way

A Musical Tribute to Frank Sinatra

Compiled by David Grapes and Todd Olson

September 10 - October 5, 2003

Proof

by David Auburn

October 15 - November 2, 2003

Joseph

and the Amazing Technicolor Dreamcoat

by Tim Rice and Andrew Lloyd Webber

Nov. 22 - Dec. 21, 2003 (*YT)

The Mystery of Irma Vep

by Charles Ludlam

January 14 - February 1, 2004

The Crucible

by Arthur Miller

February 14 - 28, 2004 (*YT)

A Lesson Before Dying

by Romulus Linney, Novel by Ernest Gaines

March 10 - 28, 2004

The Dinner Party

by Neil Simon

April 14 - May 9, 2004

Pinocchio

Performed by the Piper Puppets
presented by WCP Women's Board

May 8, 2004 (*YT)

Nunsense

by Dan Goggin

June 9 - July 3, 2004

*Youth/Family Production

Patron Information

* **Emergency Exits** located at the left front of the auditorium and left side of the lobby. Front door and lobby doors will also be used.

* **Restrooms** Located in lobby alcove - wheelchair accessible.

* **Handicapped Services** Seating for a limited number of wheelchairs. Please notify in advance if needed.

* **Assistive Listening Devices** Available thanks to the generosity of Virginia and J. Robert Wilson.

* **Patrons:** Expecting a call? Leave name and seat number with the House Manager. Please turn off your cell phones, pagers and audible watches.

* **Beverages and Food** may not be taken into the auditorium during performances.

* **Use of Cameras and Recording Devices** is prohibited during performances.

* **Curtain time** Wed./Thurs. - 7:30 p.m., Fri./Sat. - 8 p.m. and Sun. - 2:30 p.m.

* **Latecomers** will be seated at the rear of the auditorium during a suitable break in the play if space is available and may take their reserved seats after intermission.

* **Exiting the Theater** Please remain seated until the auditorium lights are on. Parking lot illumination assures that getting to your car will be easy and secure.

* **Smoking** is permitted outside the building.

* **Lost and Found** items will be held at the Ticket Office until claimed.

* **Comments** from audience members are always welcomed with interest. Please feel free to write to Weathervane to express your views and opinions about our productions. Send your comments to: *Executive Director, Weathervane Community Playhouse.*



Weathervane appreciates the continuing strong support of individuals, corporations, foundations and other donors who help finance the theater's operations, capital improvements and endowment program. Weathervane is classified as a 501(c)(3) organization and contributions are tax deductible. Following are some of the many ways in which you can take pride in your support of the art of theater in our community.

* **Become a Weathervane Member**

Your annual support makes you a voting member of Weathervane Community Playhouse. You'll receive discounts on educational programs and other benefits, based on the membership level you choose. Members are invited to Weathervane's annual meeting and to other special events. Memberships are renewable annually, beginning at \$75 (Contributing), and continuing at Sustaining, Patron, Silver, Gold, Platinum and Diamond Levels. Membership is actively solicited in the fall but is accepted at any time. Members are recognized in the Playbill.

* **Give a Special Gift To Say You Care**

Special donations may be made at any time to memorialize a friend or relative whose interest in Weathervane was significant to his or her life. You may also recognize and celebrate important dates or current achievements of relatives, friends or associates.

* **Remember Weathervane in Your Will**

What better way to carry on your tradition of support to Weathervane than by a planned gift. By taking advantage of the tax laws which encourage charitable giving, the U.S. Government will share in the cost of your gift to Weathervane. Your gift can fulfill a specific purpose or project while providing your estate with tax savings. To help ensure that Weathervane will continue, please contact our Executive Director for more information.

* **Check For Matching Gifts** Many national and local corporations will

match your donations to Weathervane, increasing your generosity to the theater. Please check whether or not your company participates in such a program.

* **Designate Gifts To Local Foundations**

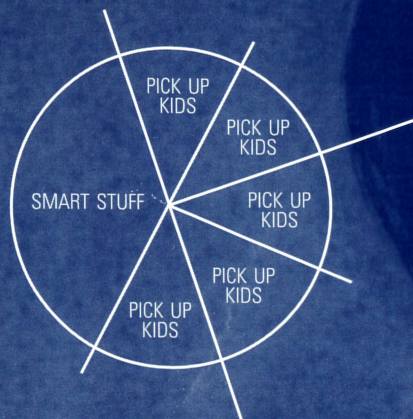
Several of this area's larger foundations accept memorial and tribute gifts in the name of specific organizations such as Weathervane Community Playhouse. Such gifts help assure continuing grants to the theater's operations and special projects. We are enormously grateful for the impressive history of foundation support in this community.

* **Sponsor or Underwrite a Production**

Our productions may be underwritten by local corporations or foundations. Benefits can include private "command performances" and special receptions for employees and friends when your business chooses this important method of support. Please call 330-836-2626. We'd like to discuss this kind of opportunity with you.

* **Capital Project**

The construction segment of the Capital Project included a scene shop with basement storage, a 2nd-floor classroom and rehearsal hall, soundproof production booth, elevator and fly gallery pocket above the stage and installation of the rigging system for the fly gallery. Donations for Stage Two of the project continue to purchase classroom furnishings, update the lighting system, renovate the lobby and replenish the Capital Fund for maintenance and repairs.



NPR. Classical.
Other smart stuff.
89.7 WKSU

A Service of Kent State University

Akron-Canton's
only
television
newscast
is here!

Watch Your
Newscast
Weeknights
at 6:30

Proud sponsor of
Weathervane
Community Playhouse

PAX23
news
UGA 2
bX53



ERIC MANSFIELD
anchors Akron-Canton news



MARK NOLAN
forecasts Akron-Canton weather



JIM DONOVAN
covers Akron-Canton sports



History From the Barn to the Valley



From 1935 until 1951, Weathervane was housed in a modest carriage house barn on Marshall Avenue. Some recall its cramped quarters but especially the energy and devotion of four ladies, Grace Hower Crawford, Laurine Schwan, Helen Troesch and Muriel MacLachlan, who believed that Akron deserved the best in theater and that volunteers could make it happen. A lobby plaque lists the names of other founders who shared their commitment. The rooftop weathervane gave the theater its name and logotype character, the Chanticleer.

In 1951, the organization renovated a building on Copley Road and, from 1960 - 1992, Bob Belfance served as director. Along with custodian/ticket office manag-

er, Nora Scott, the two-person staff relied on volunteer support. Paid guest directors and children's theater instructors served in part-time positions. Ticket receipts and donations helped meet expenses and created a modest endowment. A fund-raising drive resulted in construction of the present 263-seat facility which opened in 1970. Thanks to Grace Crawford's legacy, the mortgage has been paid off.

Construction made possible by the most recent Capital Campaign added classrooms, rehearsal space, scene shop, additional prop storage, elevator, library, fly gallery and fly system, a sound-proof production booth and a costume workshop.

Weathervane celebrated its 500th Mainstage production, *The Laramie Project*, during the 2002-2003 season. Thanks for being a part of our history.



Theater Education

Youth Education

Weathervane offers professionally taught classes in acting, stagecraft, musical theatre and improvisation for children up to age 18. Fall and spring classes are held on Saturdays and two-week **Hands on Theater (H.O.T.)** workshops are planned throughout the summer. The cost is minimal with a limited number of scholarships available and discounted fees for Weathervane members.

Children may also audition for roles in many productions. Casting is not dependent upon class enrollment. Participation is an extension of valuable training in every facet of production from the audition process to technical and performance experience. Family members may also have learning opportunities by participating in such productions.

Weathervane works with area schools by providing outreach information and study guides as part of our **Project STAGE** program, which brings public and private school students to see as many as five productions each season. This season, *Proof*, *The Crucible* and *A Lesson*

Before Dying will be featured in the **Project STAGE** events. Tickets are only \$8.

For information about classes or audition schedules for Youth Productions, please call our Education Coordinator at 330-836-2323.

Adult Classes

Professionally taught Adult Theatre classes include Classical Drama, Improvisation, Scenic Design, Stage Lighting and Directing. These classes help actors expand their performance and public speaking skills.

Learning On the Job

Every production participant becomes part of Weathervane's continuing education process. You'll learn from more experienced volunteers who share the creation of production and performance. If you don't have time for structured classes, sign on to become a crew member or performer. We'll help you expand your knowledge of backstage and onstage responsibilities.



Reserve: A Great Place to Be ... an exceptional place to learn

WESTERN RESERVE ACADEMY

Open House
Saturday,
Nov. 8, 2003 &
April 24, 2004

Visit classes, tour the campus and meet faculty and students. Families and prospective students of all ages welcome.

Check in between
8:45 a.m. and 11:00 a.m.
John D. Ong Library
College Street Entrance



Featured in U.S. News
& World Report

For further information: Visit Reserve
at www.wra.net or call 330.650.9717

WESTERN RESERVE ACADEMY
Hudson, Ohio 44236 • Day and Boarding 9-12



The Pathway to Quality Education

Preschool through Grade Eight

2315 Ira Road in Bath, Ohio near Hale Farm 330-666-1118 Visit our Web site at www.oldtrail.org





Generations of Giving.

The McDowell family's generosity and vision has transcended generations, establishing a permanent and living legacy for The University of Akron.

*From left to right:
Peggy McDowell Lloyd, C. Blake McDowell, III,
Beatrice McDowell (with her cat, Tammy),
Philip A. Lloyd, '72*

You can create an enduring legacy through a bequest to The University of Akron.

A gift through your Will or Trust helps students and provides lasting recognition for your family for generations.

To structure a charitable bequest that ensures the greatest tax results for your estate and celebrates your support of The University of Akron, please call:

David P. Horn
Director of Planned Giving
The University of Akron
330-972-6870
or e-mail: dhorn@uakron.edu

The University of Akron

The University of Akron is an Equal Education and Employment Institution.

THE POWER OF



FIRSTENERGY RECOGNIZES THE POWER OF THE ARTS AND ITS ABILITY TO ENHANCE THE QUALITY OF LIFE FOR EVERYONE IN OUR COMMUNITY.

WE'RE PROUD TO HELP SUPPORT PERFORMANCES THAT ENRICH US ALL.

FirstEnergy

2635

Ohio Arts Council

Building Ohio Through the Arts

Supporting organizations with state tax dollars to encourage economic growth, educational excellence and cultural enrichment.



Share the Arts

Ohio Arts Council
727 East Main Street
Columbus OH
43205-1796
614/466-2613
www.oac.state.oh.us

Visit today.

Arts in Ohio.com

Find what, when and where arts and cultural events are happening in Ohio...instantly! Just search the Event Finder by whatever criteria are most important to you.



Ticket Information

* **Tickets** Purchase in person or charge by phone with Visa, MasterCard or Discover at 330-836-2626, Tuesdays through Fridays 10 a.m. to 5:30 p.m. and on performance Saturdays from 11:30 a.m. to 5:30 p.m. *Reservations are also required when using coupons from your Weathervane Super Coupon Book, complimentary tickets or coupons offered from any other cooperating arts organization.* Please arrive 20 minutes before curtain time to pick up your tickets. Unclaimed tickets will be released for sale five minutes prior to curtain at the discretion of the Box Office Manager and volunteers.

* **Special seating** Please inform us if you have seating preferences due to visual, auditory or other physical needs. Please remember orders are filled on a first-come, first-served basis with season subscribers and advanced group sales taking first priority.

* **Season Subscriber Exchanges** must be phoned in at least 24 hours prior to

your originally scheduled performance. We can't always guarantee the same seats but we'll give you the closest available replacements. An upgrade fee applies when changing from a Preview Night. *If you cannot use your subscription seats, please call us at least 24 hours in advance to release them. We will recognize this as a donation.*

* **Student Rush Tickets** go on sale 30 minutes before curtain time. Students with a valid ID may purchase any remaining tickets for half price. Rush tickets cannot be reserved in advance.

* **Discounted Group Reservations** are available for groups of 15 or more. Call Weathervane at 330-836-2626 to learn how you can entertain friends, associates, or clients with a night at the theater or to plan a fund-raising event for larger groups.

* **Gift Certificates** are available at any time in any amount you choose.

* **Recycle your playbills** Anyone who doesn't wish to keep the playbill may drop it in our recycling box.

Money-saving super coupon books are available all season.

Super Coupon Books

Help You Save!

Where Theater Comes Alive!

Booklets contain eight coupons and serve as pre-paid admissions for main-stage series productions. Use them one-at-a-time or all at once!



WEST SIDE VOCAL ACADEMY

Professional Teachers — Professional Results

Voice — Acting

Ron Hazelett

Bass

330-864-0660

Susan Wallin

Soprano

Charting new paths towards the future of the Arts.

Look smart. Be smart.



Turning heads through smart design

MINXDESIGN

330.762.4126 • 1.888.GET.MINX

*The tradition continues...
distinctive retirement living*

The Merriman



The Merriman, our inaugural season, 2003 — 2004

For 52 years our home has provided a place for area seniors to receive loving care. With our commitment to preserving this tradition comes our ongoing promise to residents, families, staff, and the community that The Merriman will provide exceptional care and distinctive retirement living.

Now accepting reservations for gracious accommodations:

- Nursing Care
- Memory Care
- Gourmet Dining
- Restorative Care
- Assisted Living
- Senior Day Activities
- Wellness Programs
- Physical Therapy

For a personal tour of our distinctive residence, contact Barb Mullin at (330) 762-9341.

The Merriman, 209 Merriman Road, Akron Ohio 44303

**Supporting inspirational performances
delivered by exceptional people.**

www.brunercox.com



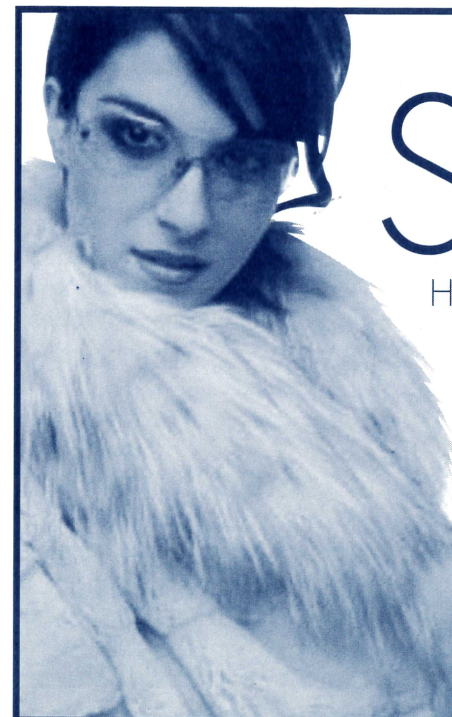
At Bruner-Cox LLP, we believe the expertise, integrity and continuity of our people allow us to deliver innovative accounting and consulting solutions to every client relationship.

Experience the value of our people.

BRUNER-COX LLP

Business Consultants & Certified Public Accountants

Our people. Your solutions.



SEXY

High fashion furs at a price
that will turn you on.



104 Summit Mall
Mon/Thu 10am-8pm • Tues/Wed/Fri 10am-6pm
Sat 10pm-5pm • Sun Closed • 330-867-2771



Women's Board

The Women's Board was formed in 1938 to "offer voluntary service and financial assistance to the Playhouse." Women's Board has energized youth education programs, sponsored productions, spearheaded fund raisers and paid for many of the amenities we appreciate in the Green Room/kitchen. Members of this active group are invaluable as hostesses, office helpers and backstage. The Women's Board sponsors an annual puppet presentation for children and also operates the Gift Boutique and Bank One Art Gallery.

New members are welcomed.

2003-2004 Officers

Thelma Coss	President	Jane Krimmer	Recording Sec.
Randie Sass	First Vice President	Nancy Zeigler	Treasurer
Jean Questel	Second Vice President	Evelyn Stiggers	Assistant Treasurer
Jacqui Sukie	Corresponding Sec.		

Committee Chairs

Art Gallery	Marci Paolucci	Hospitality	Marta Williger
Boutique	Mary Wolfman		Janet Budai
	Betty Watterson	Newsletters	Jacqui Sukie
Boutique Treasurer	Barbara O'Connor		Pat Weill
Costumes	Janet Heilmeier	Puppet Show	Jill Forster
	Henrietta Cook		Leslie Lund
Hostesses	Patrice Bechtol	Membership	Jacqui Sukie
	Pat Obenour		Thelma Coss
Cast Suppers	Wendy Cooley	House Committee	Jane Krimmer
			Betty Williams

Boutique Treasures

Our lobby Gift Boutique is a fund-raising project of our Weathervane Women's Board. Shop from one hour before curtain time or during intermission for great gift items. Prices are extremely reasonable and the items on sale include a

delightful variety from clowns and animal figures to pens, pins and earrings. Our Boutique volunteers will also assist you with information on purchasing gallery art works.



Weathervane's Professional Staff

ELYNMARIE KAZLE (Executive Director) begins her seventh season for WCP. She has spent 26 years in theater, first as a stage manager then in producing, fundraising and as a public relations rep for theaters across the US. She's had the pleasure of working with a wide range of artists from Mikhail Baryshnikov to Michael Korie, Ed Asner to Chita Rivera, in theaters such as San Diego's Old Globe, Sacramento Theater Company, LA Classical Ballet, Opera Columbus, Great Lakes (Shakespeare) and Brooklyn Academy of Music. Akron was important to Elynmarie early in her career when she served as lighting apprentice to Tom Skelton and Ohio Ballet in the early 1980s. Her diverse experience in Marketing/PR includes a stint with the Wall Street Journal. She is currently VP of Membership and Development of USITT and the founder of the nationally-known Stage Management Mentoring Project. She lives in Akron with her husband Mark and son Banno.

JANIS L. HARCAR (Director of Marketing & Development) holds an M.A. in Arts Administration from The University of Akron and a B.S. in Music Education from Kent State University and has been a Weathervane staff member since 1993. She serves as the Artistic Director of the Ravenna Community Choir and Director of St. Paul Lutheran Church Choir also in Ravenna. At the 2003 Chanticleer Ceremonies, Jan was honored with the Trustees Award.

ALAN SCOTT FERRALL (Scenic Designer/Technical Director) began at Weathervane under the tutelage of John R. Thomas. Learning the skills necessary to work full-time in the theater, Scott was hired at Cuyahoga Falls High School as auditorium manager, where he spent the next six years. During that time, he was awarded a

Design Excellence citation from USITT for *Carousel*, and a place in *Who's Who Among America's Teachers*. He has also designed for many local high schools as well as for The Players Guild, Cleveland Signstage and Channels 45/49. Scott has earned three Chanticleer Awards -- one as stage manager for *Fences*, the others as lighting co-designer for *A Man for All Seasons* and lighting designer for *The Laramie Project*. Scott also takes great pleasure in writing the end-of-the-season revue for The Not-Ready-for-Mainstage Players who appear at our annual Chanticleer Awards Dinner.

SEAN MCCONAHA (Director of Education and Producer of Youth/Family Productions) holds a dual major in Theater Performance and Pre-Law from West Virginia Wesleyan College and an M.A. in Theater from The University of Akron. He is a free-lance actor and director throughout Northeastern Ohio. Sean directed the OCTA award-winning production of *Romeo and Juliet* as well as the 1999-2000 season's Chanticleer winner for Best Production, *The King of the Kosher Grocers*. He lives in Bolivar with wife, Beth, daughters, Leda and Delaney, and twins born June 4, 2003, Zoe Grace and Griffin Dean.

KEITH D. CAMPBELL (Supervisor Front-of-House & Patron Services) holds a B.A. in English from The University of Akron, where he served as editor of *The Buchtelite* and sang with the Akron Symphony Chorus. During the summers of 1995 and 1996, he interned in the box office at Porthouse Theatre Company. Keith has done post-baccalaureate studies in Arts Administration at The University of Akron. This is his eighth season at WCP.

JOHN COTTER (Business and Public Relations Assistant) has the duties that come with helping Jan and Keith in the Marketing and Box Office areas. He also serves on



Building the Arts

Akron Art Museum
Blossom Music Center
Inventure Place
Weathervane Playhouse



123 South Miller Road, Akron, Ohio 44333 Phone: 330-867-2400



Professional Staff continued

Weathervane's Production Board as Co-Chair of Auditions. John is a retiree of 36 years with Ohio Edison and has been a long-time volunteer of the Playhouse having served on the Production Board as its President and Co-Chair of Properties. He has also worked backstage for many productions and has won Chanticleers for Properties Design for four productions, his most recent being design of *Proof* in 2003. He is, however, most proud of his three grandchildren, Dana, Nicholas and Kristin.

KATHRYN A. KOHL (Assistant Technical Director) holds a degree in Elementary Education from BGSU and a Master of Business Management Degree from Aurora College in Aurora, IL. She began her theater career as a volunteer on many lighting and set construction crews. She served as Properties Designer for *Dracula* and won a Chanticleer for proper-

ties co-design of *The Philadelphia Story*. Kathy also volunteers as Resident Master Carpenter and Master Painter for the Theatre Department at Firestone High School. She lives in West Akron with husband Doug and their three children, Stephanie, Zachary and Katie.

DREAJEAN L. BROWN (Data Services Manager) holds a Master of Science Degree in Technical Education and a Bachelor of Science Degree in Education from The University of Akron. She was recently promoted to the position of Director of Administration for the Ohio & Erie Canal Corridor Coalition. She is an active member of Delta Sigma Theta Sorority, Inc. Akron Alumnae Chapter. This season she eagerly welcomed a new granddaughter and a new son-in-law. Her major priority for this season is to spoil her grandchildren.

Many Thanks to Our Season Sponsors

Summit County Children Services
Sponsor for *Charlie & the Chocolate Factory*
County of Summit Alcohol, Drug
Addiction & Mental Health Services
Board Sponsor for *Proof*
Summa Health System Foundation
Sponsor for *The Dinner Party*
Akron Publishing Company - Ad Sales
Minx Design - Graphic Designer

Ohio Arts Council - Season Sponsor
PAX TV 23 - Season Sponsor
Greystone Hall -- Reception Sponsor
The Grotto on Merriman -- Reception
Sponsor
SAM'S Club -- Reception Sponsor
Tiffany's Bakery -- Opening Night Cakes
WKSU 89.7 FM -- Season Sponsor
WRMR 1420 AM -- Radio Sponsor for
My Way



Costumes • Wigs • Hats
Make Up • Santa & Bunny Suits
Mardi Gras Beads
St. Patrick's Day • Luau
Book Reports

10% Off your next purchase
thru 09/30/04

4130 State Road • Cuyahoga Falls
330-923-3339



Community
Cash Back Program

September 7 - May 15

Bring your Acme register tapes in to John Cotter and we'll receive a 1% return on them. This great program was developed by the Acme stores to help community organizations.



Board of Trustees

Weathervane Community Playhouse is a non-profit 501(c)(3) corporation operated by a board of volunteer trustees representative of the general community. Regular monthly meetings of the Board of Trustees are open.

Officers

George Moxon President	Jim Horvath Assistant Treasurer
Richard Worswick . . . First V. President	William Glaeser Secretary
Mary Beth Kluge . . . Second V. President	Margaret J. Dietz Historian
Laura Kerchner Treasurer	Steven P. Schmidt . . . Immed. Past Pres.

2003-2004 Trustees

Kathy Ashcroft	Dr. Rozelle Duncan	Karen Lefton	Thomas Stephan
Barbara Baskin	Christopher Esker	Myron Lewis	Elinore Stormer
Clarence F. Carlson	Jon Fiume	John Morgan	Mary Warhol
Thelma Coss	Roy Hartz	Doug Mory	Mark A. Zimmerman
Paul Daum, Ph.D.	Jeffrey Houck	Sheila Motter	
Michael Davis	Dr. Amy Lee	Jack Steele	

Advisory Board Members

Mary Adams	W. Scott Emerick	Libby Jacobs	Dr. Susan Speers
Chuck Ayers	Helen Fleming	Eric Jones	Bob Velotta
Bunny Ballance	Jill Forster	Ardith M. Keck	Shari Whitfield
Madeline Bozzelli	Dr. Penelope Frese	Dede Klein	Mary Whitmer
Stanley Brandt	Ian Haberman	Eileen Moushey	Mary Wolfman
Ann Brennan	Richard Harris III	Jim Nilsen	Mel Wolfman
Nancy Cates	Bob Hasman	Jo Ann Oelschlager	Mona Wolfman
Ron Cimini	Marilyn Heagerty	Margo Snider	June Zeno
Frank Comunale			

Production Board

Mark A. Zimmerman -- Chair

Auditions	M.J. Coulson & John Cotter
WOMEN'S BOARD Costume Shop	Sandra Harding
FIRST ENERGY Lighting Dept.	Mark A. Zimmerman
Properties	John Riazi
Sound	Charles Korecki & Tom C. Barnes
Stage Management	Nikki Rafferty
<i>Ex-Officio:</i>	
Women's Board Representative	Thelma Coss
Producer of Youth/Family Productions	Sean McConaha
Technical Director	Alan Scott Ferrall
Salon Series Coordinators	Tom Abdo & Suzanne Smith
Play Selection Chair	Beverly Smith
Executive Director	Elynmarie Kazle
House Managers	John Cotter



Our Generous Donors

Weathervane Playhouse gratefully acknowledges the financial support of our corporate, foundation and individual members. Their Membership helps keep admission prices low and helps us to maintain the high standards of production you've come to associate with Weathervane. This list is updated throughout the season.

SUPER FOUNDERS (Gifts of \$10,000+)

City of Akron	Ohio Arts Council
The GAR Foundation	Weathervane Women's Board
Northern Ohio Golf Charities	

FOUNDER'S CIRCLE (Gifts of \$5,000+)

Akron Community Foundation	John A. McAlonan Fund
Alpha Phi Alpha Fraternity, Inc.	OMNOVA Solutions Foundation
Bank One	Charles E. & Mabel M. Ritchie
Ann & Dave Brennan	Memorial Foundation
Bridgestone/Firestone Trust	Sisler McFawn Foundation
Eileen & H. Peter Burg	Lloyd L. & Louise K. Smith
Mary B. Demetros Foundation	Memorial Foundation

PLATINUM MEMBERS (Gifts of \$1,000+)

INDIVIDUALS

Fred & Francia Albrecht	Mr. & Mrs. George Moxon*
Family of Roger G. Berk, Sr.	Thomas R. Trotter & Martha Kaltenbach
Elynmarie Kazle & Mark A. Zimmerman	underwrites costumes for <i>Nonsense</i>

CORPORATIONS & FOUNDATIONS

Babco Publications	C. Blake & Beatrice McDowell Foundation
Glenn R. & Alice B. Boggess Memorial Foundation	Michelson Foundation
Brennan Family Foundation	Walter Mirapaul Foundation
Lisle M. Buckingham Fund of ACF	Laura R. & Lucian Q. Moffitt Foundation
FirstEnergy Foundation	The RC & Katherine Musson
The Goodyear Tire & Rubber Company	Charitable Foundation
Robert A. Kutz Charitable Trust	M. G. O'Neil Foundation



GOLD MEMBERS (Gifts of \$500 - \$999)

INDIVIDUALS

Susan & Patrick Baker	Janet & Jim Heilmeier	David & Orlene Makinson
Juanita & Chic Carlson	Dr. Jack & Libby Jacobs	Jo Ann Oelschlager
John Grafton & Richard Worswick*	Kathy & Doug Kohl	Steven P. Schmidt, PhD*
Eileen & Ralph Greene	Dr. & Mrs. Edward Koosed	Mary & Mel Wolfman
	Richard & Leslie Lund	

CORPORATIONS & FOUNDATIONS

A. Schulman	Myers Industries, Inc.
FirstMerit Bank	National City Bank
InfoCision Management Corp.	Summit County Internists, Inc.

**Denotes Board of Trustees*



Our Generous Donors continued

SILVER MEMBERS (Gifts of \$250 - \$499)

INDIVIDUALS

David Ashe	Barry Friedman	Barbara B. O'Connor
Juanitsa & Chic Carlson*	Roy & Mary Hartz*	John O'Neill
Mildred Collis	Jim & Charlotte Horvath*	Judy & Roger Read
Dr. Paul Daum*	Jeffrey P. Houck*	Dr. Douglas & Jane Sanders
Margaret J. Dietz*	Dr. Amy Lee*	Connie & Bob Velotta
Dr. Richard & Mary Beth Ellison	Dr. Douglas & Karen Lefton*	Richard Worswick* & John Grafton
W. Scott & Sandra Emerick	Samuel I. Levey	
Helen & Chisna Fleming	Patricia Obenour	

CORPORATIONS & FOUNDATIONS

Air Enterprises	Ernst & Young LLP	Roetzel & Andress
Annaco	FW Albrecht Family Foundation	Steele Enterprises
Bober, Markey, Fedorovich	GoJo Industries	Welty Building Company
Business Interiors	Jeter Systems	Zuckerman Consulting Group
Cedarwood Companies	Maynard Family Foundation	
Charter One Bank	Panhellenic Council of Akron	

PATRON MEMBERS (Gifts of \$150 - \$249)

INDIVIDUALS

Drs. Morton & Miriam Agins	Dr. Lowell & Francine Gerson	Doug Mory*
Nancy Ashcom*	Mary & William Glaeser*	Dr. George & Janet Nankervis
Kathleen Ashcroft*	Ginny & Jay Hershey	Dr. Luis & Theresa Proenza
Mr. & Mrs. Lance C. Bergstrom	Meg Hopp	Sandy & Sam Smith
Vicki & Dave Brockman	Mrs. Harvey Karam	Susan D. Speers, Ph.D.
Curt Brown	Laura & Jeff Kerchner*	Jack Steele*
Rozelle Duncan, Ph.D.*	Mary Beth Kluge*	Thomas Stephan*
Christopher Esker*	William W. & Anne M. Lowery	Judge & Mrs. Harold White
Dr. & Mrs. Stephen A. Farkas	Mrs. C. Blake McDowell, Jr.	Marta J. Williger
The Farmer Family	Tina & John Mogen	Mona Wolfman

CORPORATIONS & FOUNDATIONS

Akron Publishing Company	Database Marketing	Mogen Real Estate
Akron Tool & Die	The Davey Tree Expert Co.	North Akron Savings
Amer Insurance	Flexsys America	Peters, Tschantz & Bandwen
Arther Printing	GBC Design, Inc.	The Ruhlin Company
Brockman, Coats, Gedelian	Hitchcock Fleming & Assoc.	Smithers Scientific Services
Bruner-Cox LLP	Kastner, Westman & Wilkins,	Yoder Brothers, Inc.
ComDoc, Inc.	LLC	

SUSTAINING MEMBERS (Gifts of \$100-\$149)

INDIVIDUALS

John & Kathy Arther	Paul & Ruth Eisenzimmer	Mrs. Harvey Karam
Mary & Rollie Bauer	Barry Friedman	Stacia & Mike Kaschak
Doug & Mary Ann Bell	Diana & John Gayer	Dr. C. William & Ardith M. Keck
Curt Brown	Tatiana & Richard Harris	Richard & Judy Kotick
John & Maryanne Cotter	Ellen & Karl Hay	Shelley & Thomas Koutnik
Bea Dagilis	Marilyn Heagerty	Dr. Donald & Wendy MacKay
Jane & John DeYoung	Kathryn M. Hunter	Martha Mazak



Our Generous Donors continued

SUSTAINING MEMBERS - Individuals Continued

Margaret & John McBride	Lois & Paul Simmons	Pat & Leo Weill
Lynn & Edward Metzger	Mr. & Mrs. Richey Smith	Mary K. Whitmer & Stanley Brandt
Mr. & Mrs. Richard D. Miller	Mr. & Mrs. Edgar Steinmark	Mr. & Mrs. Jack Wigley
Virginia D. Moline	Dr. & Mrs. Robert Stone	Libby & Jeff Wilson
Norbert J. Moran	Paula & John Troche	B.J. Zeigler
Gloria T. Reich	Manny Underdown	Dan & June Zeno
Jay Sigler	Linda Waite	

CORPORATIONS & FOUNDATIONS

Akrochem Corporation	Holland Oil Company	Maynard Family Foundation
Cohen & Company		

CONTRIBUTING MEMBERS (Gifts of \$75 - \$99)

INDIVIDUALS

Carol Boyd	Dr. & Mrs. Raymond Kimberly	Barbara & Russell Stevic
Norma Bucey	Myron J. Lewis	Edith & Norbert Weisend
Bridget & Steve Dolin	Jo McGarvey	Linda Wernitz & Robert E. Cunningham
Raleigh & Gloria Drennon	Arlene McKinnon	Dr. Jeff Yatsu
Suzy Elderkin	The Moushey Family	Laurie Zuckerman & Steve Johnson
Carla & John Kachmar	Dr. Joseph Rapotec	
Mildred & Arthur Kattan	Bertie & Milton Sass	
Dr. & Mrs. Lawrence Kaye	Susan & David Scarponi	

FRIENDS (Non-Voting)

Madeline & Libert Bozzelli	Mr. & Mrs. Michael DelMedico	Jewell Cotter Sauser
Chick Master Incubator Company	Emily Fleisher	Ruth & Saul Senser
Mr. & Mrs. Gerald A. Colonna	George J. Gauthier	Christine Stewart
Rebecca DeBolt	Atha Hayes	Mr. & Mrs. Gale Urda
Janet & Donne Clark	General Metals Powder Company	A.E. & L.C. Wallach

SPECIAL 100-HOUR MEMBERS

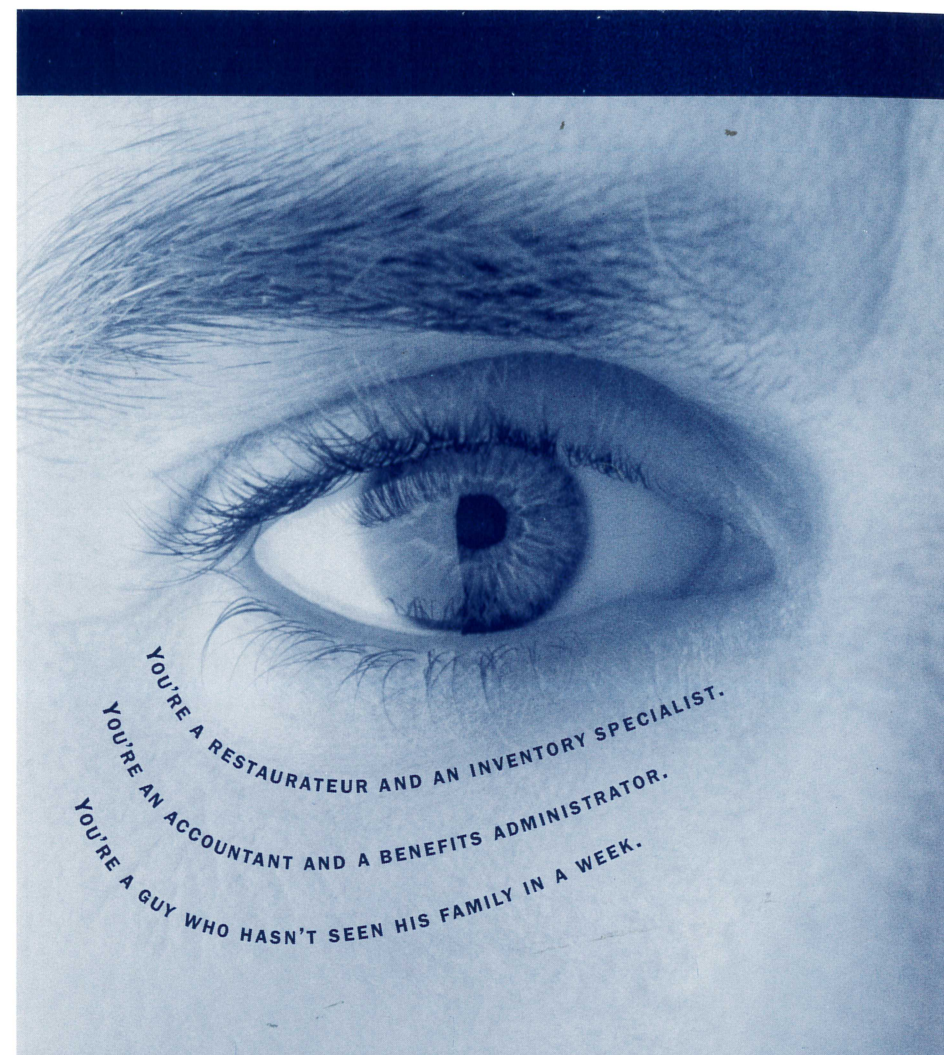
Bill Berry	Joanne S. Reed	Sonny Russo
Sarah Kormushoff	Robert H. Reynolds	

IN-KIND DONATIONS

Frank C. Comunale	The Kormushoff Family	Richard Worswick
	Sandridge Foods	

Weathervane Community Playhouse gratefully acknowledges **IBM, SBC, FirstEnergy, The BF Goodrich Company, Key Foundation, The Goodyear Tire & Rubber Company and Illinois Tool Works Foundation** for contributions made through matching gifts programs.

Weathervane Community Playhouse gratefully acknowledges **The Sisler McFawn Foundation, Akron Community Foundation, OMNOVA Solutions Foundation and Target Stores** for contributions for Project STAGE presentations and Youth Outreach Programs.



We're the bank who can help.

Second National Bank can handle all of your company's financial and banking needs. One of our advisors will be your inventory specialist, your accountant, your benefits administrator, your payroll manager, and your stress reliever. Which means you can go easily about your workday. And still make it a workday. **Smart Business Services**



The people making banking better.

A strong cast
makes all the difference.



Good luck to yours!

For information on how you can support Summa hospitals, please call **330-375-3159**



Weathervane Community Playhouse

69th Season – 2003-2004 – Production # 507
April 14 - May 9, 2004



by
Neil Simon

Sponsored by



Directed by
Sarah May

Scenic Designer
Alan Scott Ferrall

Stage Manager
Scott Custer

Costume Designer
Janet Heilmeier

Sound Designer
Donna Philips

Properties Designer
Tom Abdoo

Lighting Designer
Buddy Taylor

The Dinner Party is produced by special arrangement with
Samuel French, Inc., 45 West 25th Street, New York, N.Y. 10010.

Weathervane productions are sponsored in part by



Weathervane Community Playhouse, 1301 Weathervane Lane, Akron, OH 44313-5186
Ticket Office: 330-836-2626 – Fax: 330-873-2150 – Email: wcpakron@aol.com
www.weathervaneplayhouse.com



About the Playwright

Neil Simon is no stranger to divorce. After his first wife, Joan, died, he married and divorced Marcia Mason followed by Diane Lange--whom he married and divorced twice. Married for a fifth time to Elaine Joyce, Simon never stopped writing. *The Dinner Party* is his 31st play and it delves into the interplay among couples and the things that go wrong in their relationships. He was born in New York in 1927, the son of a salesman in a dress-manufacturing firm. As a 15-year-old, he began writing comedy material with his older brother Danny. After an Air Force hitch, Simon got his first job (\$30 a week) in the mailroom at Warner Brothers Pictures. Danny was working in the publicity department and they spent their evenings writing comedy and received on-the-job training in a program at Columbia Broadcasting System. Danny went then to Hollywood to go into TV production, but Simon stayed in New York writing for Sid Caesar and then Jerry Lewis. He wrote his first play, *Come Blow Your Horn*, in four weeks in 1961. Between 1961 and 1971, he had a play a year on Broadway. These included *Come Blow Your Horn*, *The Odd Couple*, *The Star-Spangled Girl* and *The Last of the Red Hot Lovers*. In 1972, *The Sunshine Boys* opened and the man just kept on writing hits. Recognition, however, was slow in coming. In 1968 he received a Shubert Foundation Award, fairly minor recognition. In 1975 a Tony Award followed for his contributions to the American Theater. In 1972 the Mayor of New York presented Simon with a scroll for "distinguished and exceptional service to the City." Not until 1983 did *Brighton Beach Memoirs* win Simon his first Critics' Circle Award. In 1985 *Biloxi Blues* won a Tony for a specific play. *Lost in Yonkers* won both the Pulitzer Prize and a Tony Award for Best Play of 1991. In 1994 the New Dramatists bestowed a Lifetime Achievement Award and in 1995 he was a recipient of Kennedy Center Honors.

Weatherlane Women's Board

presents



Pinocchio

**Saturday, May 8
11 a.m. & 1 p.m.**

All seats \$6

Also
M - F, May 3 - 7
at 10 a.m. & 12:30 p.m.

murder mystery-disco style! saturday, may 22, 2004

We're gonna groove! We're gonna get down! We're gonna get funky! A special surprise from Dr. Disco to you. Each team of eight will search for clues and interrogate suspects. Winners (those who figured out who done it) will receive prizes and become eligible for the grand prize.

Super Sleuths

\$50 each or \$350 for a team of 8
Includes: Pre-party, drinks,
hors d'oeuvres and dessert buffet

Dauntless Detectives

\$25 each or \$175 for a team of 8
Includes: Cash bar, munchies and
dessert buffet

Tickets increase \$5 after May 19.



The Dinner Party -- Cast

Claude Pichon **Brian Hutchison**
Albert Donay **Richard Worswick**
Andre Bouville **Michael Rogan**
Mariette Levieux **Melanie R. Korman**
Yvonne Fouchet **Brenda Redmond**
Gabrielle Buonocelli **Dede Klein**

Setting:

The Present.

A private dining room of a first-class Parisian restaurant

There will be a 10-minute intermission.

***For your safety, we request that you remain seated until the house lights have come up at intermission and after the curtain call.**

***The use of cameras, recording equipment and laser pointers is forbidden during this performance.**

***As a courtesy to fellow audience members, please make sure that cell phones and pagers are turned off during the performance.**

***Please do not bring food or drink in the auditorium.**

***NOTE: In case of an emergency in which the performance cannot continue, Calamity Vouchers will be issued for a future performance. Thank you.**

About the Play

Neil Simon's comedy/mystery has overtones of Agatha Christie: three men, seeming strangers in formal dress, arrive at a fabulous French restaurant in Paris. Each has been summoned by a mysterious invitation from a mutual friend. But the table is set for six. "Why are they here?" "Guess who's coming to dinner?" The men drink champagne, munch hors d'oeuvres, jockey for position and muse about the possibilities that the evening might hold. The puzzle is finally solved and the mystery turns to farce when three unexpected ladies arrive to fill out the dinner table. The evening is full of surprises and parlor games ensue. In the end, our comedy/mystery turns into a witty and sophisticated commentary on love, marriage and contemporary relationships.



Welcome from the Executive Director

Welcome to Weathervane!



Whether you are new to our Playhouse or an old friend, you are certainly in for a treat as you savor Neil Simon's tempting culinary mystery, *The Dinner Party*.

What a season we've had!! Many firsts came our way this season as we made the journey to several different times and places throughout the 2003-2004 season. Along the way, we have introduced you to some new actors, interesting stories and faraway places. We highlighted some critical needs in our community through our commission of the play *Mr. Lewis Rules, Stories from the Juvenile Justice System* and with our program *Faithful Fathers/Stage Dads* featuring the visit of an

award-winning stage and screen actor -- Charles S. Dutton. We are ending this season with an upbeat flourish -- with this play and the hi-jinks of the crazy ladies of *Nunsense*. We love to make you laugh and cry but we also understand that more laughing is needed right now.

This spring also brings the announcement of our 70th season, which I am truly excited to be able to share with you. Weathervane's 70th Season will run July 17, 2004 through July 3, 2005. "Following in Many Footsteps" is the theme of this special season as we commemorate seven decades of providing first-rate theater for our community. To celebrate, we have chosen two classic American stories and one from Great Britain: *The Grapes of Wrath*, *Little Women* and *Winnie the Pooh*; three musicals, the first featuring Fats Waller's American jazz -- *Ain't Misbehavin* -- the second, a cult classic chosen, in part, to entice more younger members to be a part of our audience -- *The Rocky Horror Show* -- and we will continue our own Akron family tradition with the five-year anniversary production of *Joseph and the Amazing Technicolor Dreamcoat* (where over 200 youth, most of them new to the production, get an opportunity to participate onstage). Following our founders' tradition, we have selected two plays new to the area -- Richard Greenberg's modern architectural mystery *Three Days of Rain* and Charles Busch's *The Tale of the Allergist's Wife*. And, finally, we open our mainstage season with homage to actors past with Michael Frayn's hilarious comedy *Noises Off*, a take-off on live theatrical performance. In addition, our special Community AIDS Network fundraiser this year will be NUNSENSE A-MEN, which follows our season-ending production of NUNSENSE. In addition, in the summer of 2005, we will have the pleasure of a return engagement of *Forever Plaid*, which will be presented in a special limited engagement in June.

Thank you for coming to our Playhouse and enjoy the show!

Elfrunice Kyle



The Dinner Party -- Director

Sarah May is thrilled to be working at Weathervane for the first time. She is a well-known Cleveland-area theater director who began her career as a company member of The Cleveland Play House, then spent ten years in New York City performing, directing and developing educational programs for Playwrights Horizons, Henry Street Settlement, and Roundabout Theatre. In Cleveland she has served as Director of Education for Great Lakes Theatre Festival and as Artistic Director of Karamu Theatre.

Sarah May is the 2001 winner of the **Northern Ohio Live** Award of Achievement in Theatre for her direction of *A Piece of My Heart* at Beck Center. She was nominated for the same award for *My Children! My Africa!* at Dobama, *Lady Day at Emerson's Bar and Grill* starring Rasheryl McCreary, *Mulebone* at Karamu, and *Having Our Say* at Ensemble Theatre. Most recently, she directed *Anton in Show Business* for Ensemble Theatre, *Spinning into Butter* for Beck Center and John Guare's *Six Degrees of Separation* for Charenton Theatre. **Scene Magazine** named the latter as Best Theatre Production of 2003. The **Cleveland Plain Dealer** designated her *Boy Gets Girl* at the Beck Center as one of Cleveland's ten best shows of 2003. Sarah lives in Cleveland Heights with her playwright/husband, Park Goist, her aspiring director/daughter, Joanna, and Gus, the cat.

Director's Notes

Bonsoir! Welcome to another theatrical treat from America's most prolific and successful playwright! Since 1960, when he made a historic leap from writing for TV comedy shows, Neil Simon has lit up Broadway with a new play almost every year. *The Dinner Party* is Neil Simon's 31st play, and a far cry from the ingenuous Manhattan humor of *Barefoot in the Park* and *The Odd Couple*. In this more mature play Simon blends his familiar humor and rich array of wacky characters with the perspective of a 75-year-old writer who has survived three marriages and still emphatically believes in the possibility of "committed relationships."

As Neil Simon's style has matured from his earliest Broadway comedies like *The Sunshine Boys* and *Come Blow Your Horn* to his mature, memory plays like *Brighton Beach Memoirs*, *Biloxi Blues* and the Pulitzer Prize-winner *Lost in Yonkers*, this playwright has never been afraid of experimenting with styles. I like to think of *The Dinner Party* as Simon's homage to Noel Coward (it could be subtitled *Private Lives X 3*). It is a sophisticated, thoughtful and witty exploration of marital relationships, with a hint of mystery thrown in. Perhaps Simon chose to make these characters French to give them a certain "savoir faire" when dealing with life's most painful challenges.

So let's uncork some bubbly and enjoy another wonderful evening in the theatre from Neil Simon!

Merci! Sarah May



Right here, in Akron, Ohio, we are home to a world class restaurant—Piatto, with Chef Roger Thomas creating culinary masterpieces to delight the most discriminating palates. Piatto was voted “Best Italian, Best Akron Restaurant” by the Readers’ Poll conducted annually by **Northern Ohio Live** and published in August 2001. The following year, Piatto was voted “Best Restaurant in Northern Ohio” by the Readers’ Poll.


On April 13, 2003, Piatto was host to The Friends of James Beard Benefit Dinner, “The Ohio Connection,” the first time an Akron restaurant had been chosen as a site. Each of the participating guest chefs were either currently working in Ohio restaurants or had roots in the state. Proceeds from this event were earmarked for improvements to the James Beard House in Greenwich Village, New York, as well as for culinary scholarships for financially strapped students. Chef Thomas had the rare pleasure of meeting James Beard almost 25 years ago, and he delights in the opportunity to further the foundation’s objectives. “A lot of the chefs who are enjoying their fame these days,” says Thomas, “owe it all to James Beard.” Thomas also hoped the dinner would turn the spotlight on Ohio, raising nationwide awareness of the state’s culinary talent.

Linda Hutchinson is a painter from Brimfield Township whose primary mediums are watercolor and oil. She is a member of Akron Society of Artists, The Ohio Watercolor Society and the recipient of the gold medal of honor in “Watercolor Ohio 2001.” In 2002, her work was chosen, along with that of eight other painters, to be awarded and exhibited in New York by The Joyce Dutka Arts Foundation. Her illustrative work has been featured by C.R. Gibson, Schurman Fine Papers and several others. She teaches painting and drawing through the continuing education program at The University of Akron and Kent City Schools.

Judy Carducci’s paintings have won Best of Show, Award of Excellence, First Place, Award of Merit, and purchase awards at international shows and competitions, and are in collections in the USA, Europe, Canada and Israel. She is a member of the Portrait Society of America (faculty), Pastel Society of America, Degas Pastel Society, American Artists Professional League, International Association of Pastel Societies, Cincinnati Art Club, Salmagundi Club, Akron Society of Artists, and Hudson Society of Artists. She’s listed in *Who’s Who in America*, *Who’s Who of American Women*, *Outstanding People of the 20th (& 21st) Century* (International Biographical Centre, Cambridge, England) and represented by Portrait Brokers, Inc., and Portraits South.

 Weathervane Playhouse is handicapped accessible. Ramps are available to the front doors, auditorium and seating.

 Assistive-listening devices for the hearing impaired are available at the Ticket Office.

 Large-Type program inserts are available at the Ticket Office. These copies are not full playbills but contain information unique to this production. These inserts are photocopied and are available in limited quantity.

 American Sign Language interpretations are scheduled for selected Sunday performances.

 Ohio Relay System 1-800-750-0750 TDD. Call to have your ticket order placed.



BRIAN HUTCHISON (Claude) comes to the Weathervane stage for the first time. He has won numerous awards for his theatrical work, including back-to-back Best Actor trophies (in 2002 and 2003) from the North Canton Playhouse for his performances as the blind Don Baker in *Butterflies Are Free* and as Ralph Parker in *A Christmas Story*. He has also appeared in the NCP productions of *As Bees in Honey Drown* and *Miracle on 34th Street*. He has played Atticus Finch in *To Kill a Mockingbird* at Strongsville Theatre and had the controversial part of Judas in *Corpus Christi* at The University of Akron. Brian is on the play reading committee at the Kent Stage and the Public Relations committee at NCP. He is a recent graduate of The University of Akron with a degree in Communication, and plans to move to Los Angeles just as soon as he saves up enough money to get there! He thanks Todd for helping him run lines for this production.

RICHARD WORSWICK (Albert) was one of those two frantic actors playing seven parts in *The Mystery of Irma Vep*. Richard does enjoy a challenge! Richard received a Chanticleer for Best Actor for his portrayal of Reuven Malter in *The Chosen*, and was part of the cast of *The Laramie Project*, judged Weathervane’s Best Play of the Year and Outstanding for its Ensemble Work by the Ohio Community Theater Association. He received a bachelor’s degree in theater from Eastern Michigan University, studied acting at The Academy of Dramatic Art at the Meadowbrook Theatre and was a member of the Indiana Theatre Company at Indiana University. He spent the last 22 years working as an administrator for the Cleveland Orchestra prior to retiring. He joined the Weathervane Board in 2001 and has been on our stage frequently in the last

three years. He has also appeared at the Paul A. Daum Theatre in *Fahrenheit 451*; at Dobama Theatre in *Porcelain*, *Our Country’s Good* and *Lisbon Traviata*; at the Cleveland Play House in *The Normal Heart*, *Loves of Cass McGuire* and *Small Craft Warnings*; at Berea Summer Theatre in *Greater Tuna*, *Butley*, *The King and I*, and *Story Book Theatre*; and in *Alice!* at the Palace Theatre in Playhouse Square. Richard has enjoyed working with Sarah May after knowing her for 30 years, but never having worked together until now.

MICHAEL ROGAN (Andre) is a retired attorney making his first appearance at Weathervane. No stranger to the stage, he last appeared as Prince Cherney in *Little Me* at the Cassidy Theatre. He has also appeared as the Tin Man in *The Wizard of Oz* at the Shore Cultural Centre, Sir Robarts in *Witness for the Prosecution* at Western Reserve Playhouse, Caiaphus in *Jesus Christ Superstar* at the Fine Arts Centre, and Beralde in *The Imaginary Invalid* at Lakeland Theatre. Other favorite roles include LeBret in *Cyrano de Bergerac* and Thesius in *A Midsummer Night’s Dream*. Michael has a Bachelor of Arts degree from Case Western Reserve University and a J.D. degree from Cleveland Marshall School of Law. He sends his love and thanks to his wife, Helen, and his children, Eric and Anne Marie, for their continued support, especially when he cornered them to run lines.

MELANIE R. KORMAN (Mariette Levieux) is honored to return to Weathervane’s stage. She made her debut here as Clair in last year’s production of *Proof*. Other favorite roles include Rosalind in Shakespeare’s *As You Like It*, Diana in *Lend Me a Tenor* and Bette in *Heaven Can Wait*. Melanie received a bachelor of arts degree in Mass Media Communications from The



Callboard Continued...

University of Akron with a minor in English. She is currently Director of Public Programs at Stan Hywet Hall & Gardens and mother to her lovely cats, Monty and Chloe. Many thanks go to her family (yes, her parents are Irv and Francine Korman), friends and David for their love and support. She would also like to thank Sarah and this talented cast for making this show so much fun!

BRENDA REDMOND (Yvonne) has journalism and law degrees from The Ohio State University and is currently working as an attorney for the U.S. Department of Education. She and husband, Rudy, moved to the Cleveland area three years ago and live in Northfield Center. Since March 2003, she has appeared as Opal in *Opal's Million Dollar Duck*, as Mrs. White in *The Monkey's Paw*, and as Norma Hubley in *The Plaza Suites*, all for the Mayfield Community Players. She extends thanks to the great Weathervane cast and director,

and also to her soulmates and eternal cheerleaders, Cindy, Pam, Katie and Michele for their constant support. She also thanks her husband Rudy.

DEDE KLEIN (Gabrielle) is a Chanticleer winner-Best Actress for playing Elvira in *Blithe Spirit* and Best Supporting Actress as Birdie in *The Little Foxes*. Other favorite roles on the Weathervane stage are Amanda in *The Glass Menagerie* and Florence in *The Odd Couple (Female Version)*. Some of Dede's other favorite roles include Charlotte Hay in *Moon Over Buffalo* and M'Lynn in *Steel Magnolias*, both at Aurora Community Theater. The latter production won a Best Ensemble Award from the Ohio Community Theater Association. She also particularly enjoyed playing Eleanor in *Lion in Winter* at the Chagrin Valley Little Theatre with many other parts and plays in between. She has appeared in industrial films for Goodyear Tire and Rubber Company.



Backstage Callboard

SCOTT CUSTER (Stage Manager) is a good man to have back stage. He has previously served as stage manager for Weathervane's *To Kill a Mockingbird*, as properties designer for *The Farndale Avenue...A Christmas Carol*, as sound operator for *Harvey*, as lighting designer for *James and the Giant Peach*, and as set builder for several other productions. He is a logistics analyst for Royal Appliance with a degree in business management from Walsh University. He and wife Mandi live in Streetsboro.

TARA L. SNYDER (Assistant Stage Manager) is managing her first show at Weathervane. She was previously on stage as Suzanne in *The Church Street Players'*

production of *Dearly Departed*. She is excited to be back in the theater after the birth of her first baby a year ago and she sends thanks to her family for encouraging her and to her husband for his constant support and for those many nights of being on baby duty alone. (I love you, P.) She thanks the cast for making her laugh every night and Sarah and Scott for inviting her to be a part of this party.

DONNA PHILIPS (Sound Design) is happy to be back designing sound at Weathervane. This is the latest in a long line of technical designing and crew work she has done since coming to Weathervane through the volunteer recruiting at the Akron Arts Expo. Last October, she



Backstage Callboard continued...

worked with the Kent Theater as stage manager for Jack Herman's *Dracula*. She previously served as stage manager for Weathervane's *Arsenic and Old Lace*. Currently, Donna is working as the service write-up person at Bill's Home and Garden in Stow. The best times for Donna are spent with family and friends.

TOM ABDON (Properties Design) is service manager for Parrish/McIntyre and has ten grandchildren to keep track of as well. He's used to coping with "stuff" and has done props design for Weathervane's *A Man for All Seasons*, *The Odd Couple (Female Version)* and *The Glass Menagerie*. He has also managed props for productions for Church Street Theater and The University of Akron.

JANET HEILMEIER (Costumes Design) This is Janet's eleventh Weathervane production for which she has served as costume designer. Trained as a dancer and choreographer, she has appeared on stage at Weathervane in *Kiss Me, Kate* and *Annie*. She had her own school of ballet in Texas and has choreographed shows for Firestone High School and the May Festival of Music here in Akron. Mother of four, she has published a children's book, and continues to be involved with her four grandchildren. With a degree in communi-

cations from The University of Akron, she has recently found a new career as the "voice of Sumner's Butter" on local radio stations, writing and recording commercials for her husband's company. You can find her most Sundays singing with the choir at St. Sebastian's Church. A member of the Weathervane Women's Board, she is currently serving as co-chairman of the Costume Department.

BUDDY TAYLOR (Lighting Design) was stage manager, lighting designer, and technical advisor for eighteen plays at the Pensacola, Florida Little Theater. He studied theater arts at the University of West Florida. He joined up with Weathervane last season and was Assistant Stage Manager for *The Complete Works of William Shakespeare*, then stage-managed our production of *Gypsy* last summer.

DAVID O'LEARY (Production Assistant) has traveled a long way to make his debut on the Weathervane stage. A native of Brisbane, Australia, David has stopped in Akron for three months amid his world travels amid his world travels. He recently visited England, Ireland, Scotland and Mexico and anticipates enhancing his itinerary in the future. We are delighted to have him as part of this production.



Greystone Hall & Catering

A fine dining experience for any event

103 S. High Street

Downtown Akron

330-761-1950



Production Team Members & Crews

Alan Scott Ferrall -- Technical Director

Kathy Kohl -- Assistant Technical Director

SET CONSTRUCTION

Ruth Richardson John Keller
Spencer Burke Lauri Agins
Tom Marshall Judy Willemssen
Kevin Ford

PROPERTIES

Heather Davis
David O'Leary
Tara Snyder

COSTUMES

Sandra Harding
Henrietta Cook
Betty Williams

SOUND

Lois Bennett Nikki Rafferty

PRODUCTION ASSISTANT

David O'Leary

ACKNOWLEDGMENTS

Margo Cohen
Professor Francoise Kenney, Ph.D.
and her Kent State University
class in French Literacy and
Cultural Translation
Andrew Farrell, Cleveland Play
House Properties Department
Nicholas Shaheen



Memorial Contributions were made to Weathervane Playhouse
in honor of **H. Peter Burg** by
Ardith M. & Dr. C. William Keck

Thanks to Our Volunteers

The following are the vivacious volunteers who assisted you by hostessing, house managing and staffing the boutique, office or Green Room during *A Lesson Before Dying*.

Dionne Atchison	Helen Fleming	Lois Murray	Evelyn Stiggers
Patrice Bechtol	Jill Forster	Pat Obenour	Jacqui Sukie
Connie Bowen	Sandra Harding	Barbara O'Connor	Helen Tschantz
Dreajean Brown	Marilyn Heagerty	John O'Neill	Lynn Vanca
Karen Burridge	Linda Heath	Jean Questel	Linda Waite
Alberta Carlin	Janet Heilmeier	Bess Raines	Betty Watterson
Juanita Carlson	Jane Hessin	Joanne Reed	Pat Weill
Henrietta Cook	Pat Hudson	Ruth Richardson	Betty Williams
Wendy & Ralph Cooley	Kim Jameyson	Randie Sass	Marta Williger
Thelma Coss	Elynmarie Kazle	Lois Simmons	Mary & Mel Wolfman
John Cotter	Jane Krimmer	Suzanne Smith	Gen Woods
M.J. Coulson	Leslie & Richard Lund	Amy Snell	Richard Worswick
Margaret Dietz	Claudena Miller	Ethel Soudry	B.J. Zeigler
Virginia Flemm	Eileen & Stephen Moushey	Susan Speers	Nancy Zeigler



Next On Our Stage



Musical by Dan Goggin

June 9 - July 3, 2004

Five nuns put on a musical talent show to raise funds for the burial of some of their sisters who imbibed too freely of some tainted vichyssoise and who repose temporarily in the convent freezer.

Future Events

Saturday, May 8 at 11 a.m. & 1 p.m.

The Piper Puppets in Pinocchio

Saturday, May 22

MURDER MYSTERY -- DISCO

STYLE! MYSTERIES BY MOUSHEY at

Weathervane -- Fundraiser

Saturday, June 26

Annual Gala

See *Nunsense*, dine and bid on great auction items.



July 17 - Aug. 1

The first youth/family production of the 2004 season.

August 21, 2004

Chanticleer Awards Night

summitartspace
plus



a
partnership

James B. McCarthy
James B. McCarthy, Executive

Weathervane Playhouse Staff

Elynmarie Kazle -- Executive Director

Keith D. Campbell

Supervisor, Front-of-House
& Patron Relations

Alan Scott Ferrall

Scenic Designer/Technical Director

Janis L. Harcar

Director of Marketing & Development

Sean McConaha

Dir. of Ed./Producer Youth Prod.

John A. Cotter

Business & Public Relations Assistant

Kathy Kohl

Assistant Technical Director

Caroline Klein

Bookkeeper

Dreajean L. Brown

Data Services Manager

Dionne Atchison

Intern

MAGICAL THEATRE COMPANY

Professional Theatre for Young Audiences & Families

2003-2004



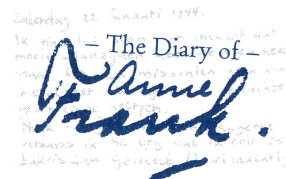
Bunnacula

Oct. 17 - 26, 2003



The
**VELVETEEN
RABBIT**

Nov. 28 - Dec. 19, 2003



Jan. 30 - Feb. 1, 2004

Sponsored in part by Bridgestone/Firestone Trust Fund



The
**BOXCAR
Children**

May 7 - 16, 2004

330/848-3708

565 W Tuscarawas Ave • Downtown Barberton



Coach House Theatre

Akron's 1st Theatre

Crimes of the Heart

by Beth Henley

September 4 - 20, 2003

barefoot in the park

by Neil Simon

November 13 - 29, 2003

A Christmas Carol

by Charles Dickens

Adapted by Mark Dawodzoal

December 13 - 21, 2003

ART

by Yasmina Reza

Translated by Christopher Hampton

February 12 - 28, 2004

ten little indians

by Agatha Christie

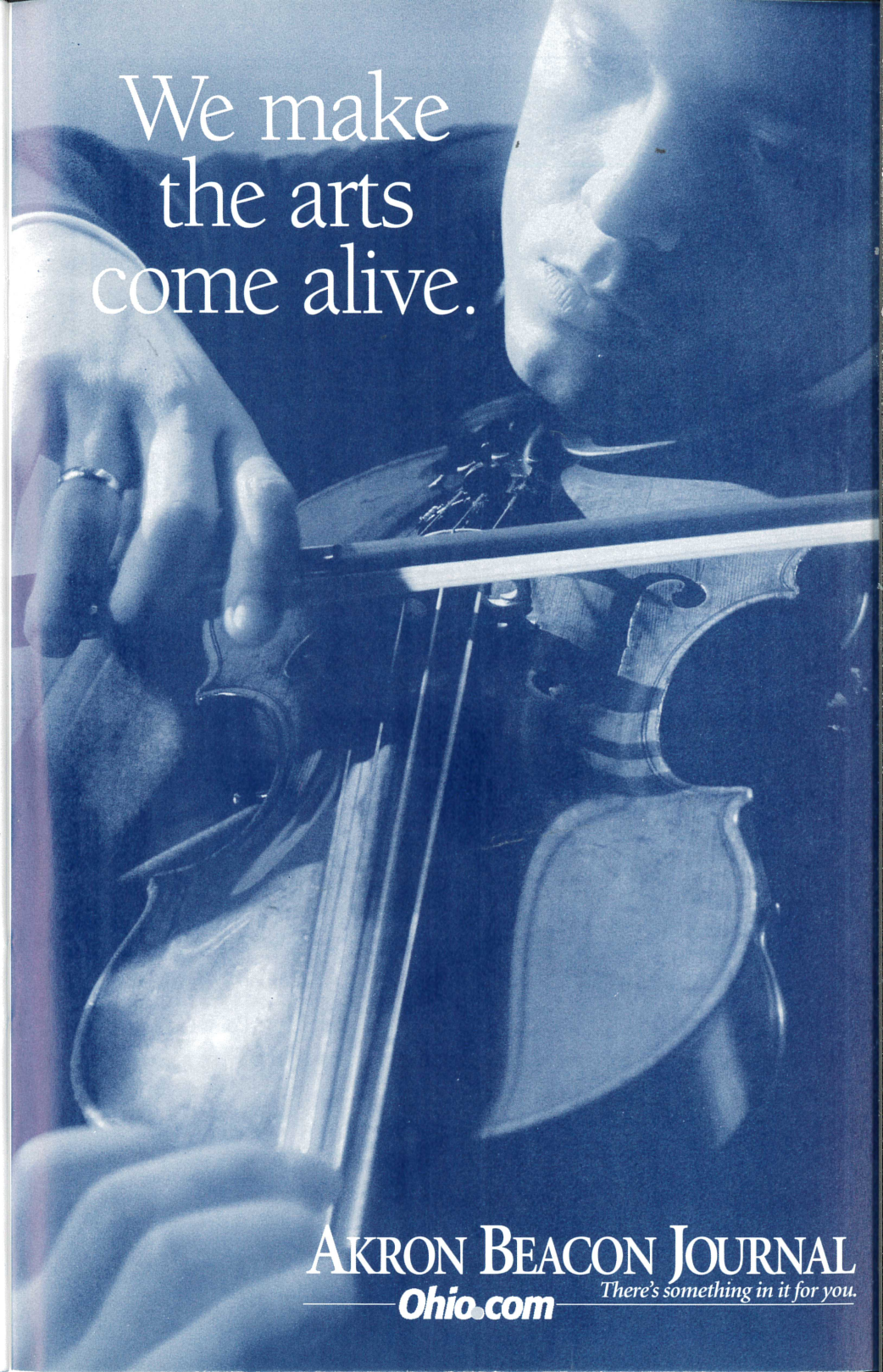
May 6 - 29, 2004

*Join us this season at Coach House
as we share our passion -- without
you, it's just a rehearsal!*

Jim Fippin

Resident Director

We make
the arts
come alive.



AKRON BEACON JOURNAL
Ohio.com *There's something in it for you.*



The Best Place For Fine Furniture in Greater Akron is at Wayside



- Over 200,000 sq. ft. of inventory.
- Providing friendly, responsive service for over 66 years.
- Professional interior designers on staff.
- We buy and sell for less ... every day.

Fine pieces from these quality manufacturers on display:

Kincaid • Pennsylvania House
Stanley • Lexington • Nautica
Lane • Smith Brothers • Flexsteel
Bob Timberlake • Cochrane
Serta • Broyhill • Clayton Marcus
Canadel • Howard Miller • Hooker
Sumter • Crescent • Dozens More

Visit our newly-opened 10,000 square-foot addition!

Wayside
furniture

"Where You'll Find Better Furniture Priced Lower"

1367 Canton Road Akron On Route 91,
just 1/4 mile south of Route 224
Shop Daily 10 to 9, Saturday 10 to 6, Sunday 1 to 6
Visit our website: www.wayside-furniture.com

330-733-6221
Toll Free 877-499-3968

Stinaff's
DATA FORMS & SYSTEMS SINCE 1935



We're a great cast
of performers
in meeting your
full color printing and
business form needs!

44 S. Summit St. • Akron, OH 44308
330-434-2106 • Fax 330-434-9376

SPOTLIGHTS

Your Ticket To ENTERTAINMENT

WEST SIDE
Leader

Reaching 43,600 homes
and businesses in one
of America's best
demographic markets.

GREEN
Leader

Reaching over
10,000 homes and
businesses
in the city of Green.

3075 Smith Road Suite 204 • Akron, OH 44333
(330) 665-9595 • Fax: (330) 665-9590

Graf
Growers
Garden Center • Farm Market

1015 White Pond Dr. Akron
330.836.2727
grafgrowers.com

Bring this ad to
Graf Growers & receive

\$5 off \$25
reg. price plant purchase
through 8/31/04

Be Anybody.

Our Lady of the Elms

A Dominican Education for Girls.

Open House

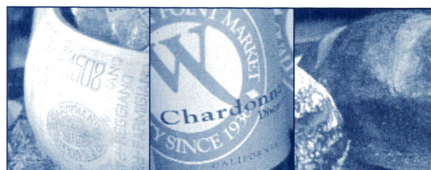
Sun, Sept 14: 1-3 p.m.
Wed, Oct 8: 6-8 p.m.
Sun, Nov 2: 1-3 p.m.
Wed, Mar 31: 6-8 p.m.



For more information, please contact
the Office of Admissions at:

1220 W. Market St.
Akron, Ohio 44313-7108
(330) 867-0918
www.ourladyoftheelms.org

Start Here.



Entertain Your Palette

Specialty foods and wines

Mrs. Ticklemore's Tea Room

Beside the Point Café

Movable Feast box lunches & dinners

Catering

Gift baskets for all occasions

WEST POINT MARKET

1711 West Market St., Akron OH 44313
330-864-2151 / 800-838-2156
Mon-Sat 8am-7pm / Sunday 10am-5pm
www.westpointmarket.com



Where Theater Comes Alive!



Accomini's
SINCE 1932

Dinner before or after the show.

Minutes from

WeatherVane Playhouse
Restaurant - Deli - Wine Shoppe

Banquets - Catering

1561 Akron-Peninsula Road
(330) 923-7999

THE
Grotto
ON MERRIMAN

Seafood & Steaks
at casual
dining prices.

1841 Merriman Rd.
Akron, OH 44313

330.869.4981



**Membership
Warehouse**
FOR BUSINESS & HOME

A SAM'S CLUB Membership gives you access to:

Huge Savings
Brand-name Merchandise
Great member Benefits

3750 "J" West Market St.
Fairlawn, Ohio 44333

Marketing 330-665-5337
Main 330-665-5336
Fax 330-665-5430

*Weathervane Playhouse
thanks
Tiffany Bakery
for the beautiful opening
night cakes.*

Tiffany's Bakery
Elegant Selections



Wedding Cakes

330-753-0017
2176 Romig Road
Akron, OH 44320



Volunteering at Weathervane

Weathervane began as a volunteer organization and continues its growth thanks to the time and talent that members of our community invest in it. Our on-stage performers have worked long and hard to earn your applause. But their work is supported by many other unseen men and women who've helped build and paint sets, run the lights and sound, make sure that properties and set dressing items are in their proper places and do other backstage labor from stage managing to costuming and make-up. Supporting those who are actively involved in putting on each show are still more volunteers who usher, house manage, sell tickets, keep our office running and serve on our Board of Trustees, Board committees, Production Board and Women's Board.

Their spirit is the backbone of our continuing operations, a valued support on which our professional staff relies.

Each month, we acknowledge the outstanding Volunteers of the Month in our lobby, but those volunteers represent all who commit their time and interest to create a great theater experience for everyone who's come to see this show.

If you have friends or relatives who volunteer generously at Weathervane, we hope you'll take a moment to thank them for their help and their support of the cultural enrichment of our community. Better yet, join them! Call us and we'll help you win your own share of the applause for a "jolly good show," an experience that offers unique challenges with every performance.

Share the Annual Chanticleer Celebration

Shortly after the final production of each season, Weathervane volunteers and friends share an exciting party to acknowledge outstanding performances by performers and technical volunteers. The top performers are awarded rooster statuettes—Chanticleers—in recognition of their work, as voted by Chanticleer "judges." It's a great night to get together, share hopes, fun and festivities and is open to all.

Awards are presented for outstanding lead performances by a male or female

in a drama or comedy, outstanding support performances, and outstanding lead and support in a musical as well as choices in technical achievement. Chanticleers are also awarded for Properties, Lights, Costumes and Sound Design, plus Best Production of the season. In addition to performance and production awards, the event also recognizes the Top 25 outstanding volunteers of the season. We welcome you to take part in the biggest nail-biting party of the year.

GREGG LAUCK

800.795.1366
Fax 330.342.4826



THE GREENHOUSE
FLORIST



Mon. - Fri. 9-5
Sat. - 9-3



Teleflora

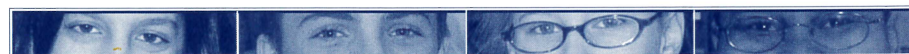
ORCHARD PLAZA * 5825 DARROW RD * HUDSON, OH 44236

**Don Drumm
Studios &
Gallery**

It all comes together here.

437 Crouse Street, Akron, OH 44313
330.253.6268
M-F: 10-6, S: 10-5

glass, jewelry, sculpture, photography, ceramics



Different stories. Proven approach. Real success. Lawrence School.

Northeast Ohio's leader in learning disabilities education since 1969!

1551 East Wallings Road • Broadview Hts. • 440-526-0717 • www.lawrenceschool.org

MALONE

CHALLENGING
CONTEMPORARY
CHRISTIAN

God has blessed us with great powers of expression, and Malone College wants you to appreciate the energy such expression generates. At Malone you can immerse yourself in the arts—just dive in! There are a wide variety of opportunities in the visual arts, music, and theatre, both on and off campus.

Looking for an “arts experience” at Malone?

You don't have to look far: Chancel Players, Chapel Band, Chorale, Concert Band, Instrumental Ensembles, Jazz Band, Marching Band, MC Comedy, Mime Team Ministry, Mural Projects, Outreach Music & Drama, Theatre Productions, Vocal Ensembles, Women's Concert Choir, and the list goes on...

MALONE
COLLEGE
CHRIST'S KINGDOM FIRST
www.malone.edu

Why is this man smiling?



Because his customers are too.

If you haven't been smiling lately, please call Akron Publishing Company for your next custom publishing project. We will produce brochures, magazines, catalogs, directories, books and more... all of them from concept to completion. Akron Publishing Company will be the only call you'll need to make.

AKRON
PUBLISHING COMPANY

phone: 330.929.2703 ▲ fax: 330.923.0856
e-mail: akronpublishing@neo.rr.com

We do really good work, so that you'll look really good.



Volunteer Opportunities

Complete and detach this form and return it to the Ticket Office or mail to:
Volunteer Opportunities, 1301 Weathervane Lane, Akron, OH 44313-5186

NAME _____

ADDRESS _____

CITY _____ ZIP _____ PHONE _____

I am interested in the following areas: (Check as many as you wish)

- | | | |
|--|--|---|
| <input type="checkbox"/> Acting | <input type="checkbox"/> Costuming | <input type="checkbox"/> Fund Raising |
| <input type="checkbox"/> Set Building | <input type="checkbox"/> Orchestra | <input type="checkbox"/> Box Office |
| <input type="checkbox"/> Painting | <input type="checkbox"/> Sound | <input type="checkbox"/> House Managing |
| <input type="checkbox"/> Usher | <input type="checkbox"/> Lighting | <input type="checkbox"/> Play Reading/Selection |
| <input type="checkbox"/> Backstage Crew | <input type="checkbox"/> Classes | <input type="checkbox"/> Board Membership |
| <input type="checkbox"/> Other _____ | | |
| <input type="checkbox"/> Best time to reach me at the above phone number _____ | | |
| <input type="checkbox"/> I am a subscriber. | <input type="checkbox"/> I am a donor. | |

I HAVE AN OPINION...

About tonight's play _____

About the current season _____

About future seasons _____

I have a fund-raising idea. _____

We appreciate, and often respond to, opinions offered about our work. Be sure to fill in your name and address above if you wish a response or would like to be contacted.



Volunteer Responsibilities

Here's a quick introduction to the responsibilities volunteers undertake to make our shows work. If you'd like to try your hand at any of these jobs, please call us. We'll help you learn! Volunteers with 100 hours or more of service are eligible for a special Weathervane membership!

*** Stage Management** - Duties include assisting the director throughout the rehearsal period, calling cues, keeping backstage safe and orderly, and coordinating the technical needs of the show with the actors. A great opportunity for those who enjoy planning, communicating and taking charge. Once the director's work is done, it's the Stage Manager who runs each performance.

*** Set Construction** Use your building skills, carpentry or painting techniques to help make illusion come to life. Help is needed days and evenings.

*** Costumes** Designers and workers are vital. We invite skilled and unskilled seamstresses to make or alter costumes, create patterns, care for costumes during a show and keep our wardrobe department organized.

*** Lighting** Experience is a plus, but you can learn by assisting others who know computers and electrical requirements. We'll train eager volunteers to help hang, focus, and add color to lighting instruments. We'll also teach you how to run the light board and follow spots. *Nobody can see the show without you.*

*** Sound** Create the music and sound effects tapes that enrich the aural envi-

ronment for each show or add "live" backstage sound. Run the sound system for technical rehearsals and productions.

*** Properties** All the items that help "dress" a set and all those used by actors in rehearsal and performance (from tea sandwiches to "deadly" weapons and "shattering" windowpanes) must be borrowed, built or cooked. Many volunteers are needed to work on each performance.

*** Office Volunteer** If you enjoy dealing with the public, we can use your help during office hours and on show nights to assist in taking money and answering the phone to take reservations. You may also help with mailings, work with staff, and greet customers and visitors.

*** Ushering** Welcome audience members with your smile, show them to their seats, pass out programs, and serve refreshments at intermission. Your help is always welcome.

*** House Manager** This representative greets the audience, tears tickets and guides theater-goers to ushers for seating. You'll work with the stage manager to coordinate the timing of intermissions and remain in the lobby throughout the show to handle any emergency.

Weathervane Community Playhouse

is a proud member of



Ohio
Community
Theatre
Association



Luigi's

"An Akron Tradition Since 1949"

- Award Winning Food
- Casual Dining
- Old World Elegance

Featuring Our Famous Homemade

- Pizza
- Lasagna
- Antipasto

OPEN 7 DAYS
105 N. MAIN ST.
330-253-2999



*A healthy
child is
music to
our ears.*



Akron
Children's
Hospital

Feels Like Family

One Perkins Square
Akron, Ohio 44308-1062
(330) 543-1000
www.akronchildrens.org



A Great Night Out Deserves A Good Ending...
Stop at the Whistle Stop Tavern

Located in Quaker Square
Downtown Akron
330.253.5970

Featuring great food & drinks
Experience our wine list
Visit our new and unique shops



Kindermusik®

a good beginning
never ends

Singing, Movement & Instrument Play,
Ages infant - 7

Daniel's Music Studio
BATH • RICHFIELD • FAIRLAWN
(330) 659-3173
www.kindermusikneohio.com

Kindermusik® with Miss Terri & Friends
STOW RETAIL PARK • 4962 DARROW RD.
Also visit our DrumPlay Store or have
your Birthday Party with us!
(330) 655-8499 • (877) 650-8320
www.kindermusikwithmissterri.com

The CUTLER Family of Companies *Under One Roof...*



CUTLER/GMAC Real Estate,
Akron/Canton's real estate leader, is a
diversified one-stop, total homeownership
company. Whether you are looking for
a new home or preparing to sell one, we
can make your dreams a reality, with the
convenience of a real estate, mortgage
and title company under one roof.

CUTLER  **Real Estate**

TITLE AGENCY **1** MORTGAGE **1** ONE

www.cutlergmac.com

Allows You Time To Enjoy What's Really Important.

FIVE *At* FIVE

CONCERTS OF UNIVERSAL INSPIRATION
ON SUNDAY AFTERNOONS AT 5 O'CLOCK

SEPTEMBER 21, 2003

THOMAS HEYWOOD

AUSTRALIAN ORGAN VIRTUOSO

OCTOBER 19, 2003

FAURÉ REQUIEM & ORGAN SOLOS

WESTMINSTER CHOIR, FIRESTONE SYMPHONIC CHOIR,
CHAMBER ORCHESTRA AND ORGAN

DECEMBER 7, 2003

AMAH! AND THE NIGHT VISITORS

A FULLY STAGED CHRISTMAS CLASSIC

FEBRUARY 29, 2004

OHIO STATE UNIVERSITY MEN'S GLEE CLUB

A SPECTACULAR 90 VOICE MEN'S CHORUS

MAY 9, 2004

HITS FROM THE OPERATIC & BROADWAY STAGE

PERFORMED IN WRIGHT-HERBERICH HALL

WESTMINSTER PRESBYTERIAN CHURCH
1250 WEST EXCHANGE STREET, AKRON, OHIO
330.836.2226

Beware of the Dreaded No-Show

Have you ever seen empty seats at a *sold out* sporting event or concert? Weathervane has the same problem. Single-ticket buyers and subscribers who may have exchanged from another performance wonder why they weren't given those prime empty seats for the evening.

When you buy a subscription, you are *promising* to come to the theater for that ticketed performance and we hold your seat(s). These subscription seats are held until intermission. This, additionally, makes it impossible to tell if a performance is ever really *sold out* and annoys ticket buyers who see that they could have been seated in a better spot.

Subscribers: Please call the Ticket Office at 836-2626 if you will not make your ticketed performance. Thanks.

Weathervane Traditions

Meet the cast Many cast members spend a few minutes in the lobby area to meet and greet friends after performances. It's your chance to thank them for their performance.

Intermission Tea is served with our compliments by our volunteers. Soft drinks are available at a nominal cost.

Opening Night Receptions welcome audiences on first Friday performances. We provide light snacks and refreshments after the show so you can share in the celebration.

For your sweet tooth snacks are available for purchase before the show and during intermission. Refresh-ments (other than water) are not permitted in the auditorium.



Who Gets On Stage?

Our volunteer performers come from throughout greater Akron and Northeastern Ohio. They've committed themselves to four or more weeks of rehearsals plus performances. Their greatest reward is your applause.

Many performers come with substantial theatrical experience. Others are new to the stage. Auditions are open to all and our non-traditional casting policy opens the way for many performance opportunities. Except in cases where race, gender, age or disability is essential to the play, all roles are cast on the basis of talent.

Local newspapers carry audition dates and times or call Weathervane at 330-836-2626 to be added to the audition mailing list. Some directors prefer to set appointments for audition times and may ask that you come prepared with a brief

monologue, improvisational subject or musical number. Copies of plays scheduled or audition scenes are often available for a nominal deposit.

When you arrive at the theater on audition nights, you'll learn about the rehearsal and performance schedule. You may also register as a production volunteer if you're interested in learning about the technical opportunities in the show.

You may be asked to return for callbacks and will be notified of the director's cast selection as soon as possible. Please note that if you don't win the role you've wanted so badly, it may not necessarily reflect on your talent. The director's choice of cast members must take many factors into account to develop the proper "relationships," style and reality of the ensemble. Don't be discouraged.

What If... every doctor knew as much
about caring as curing?

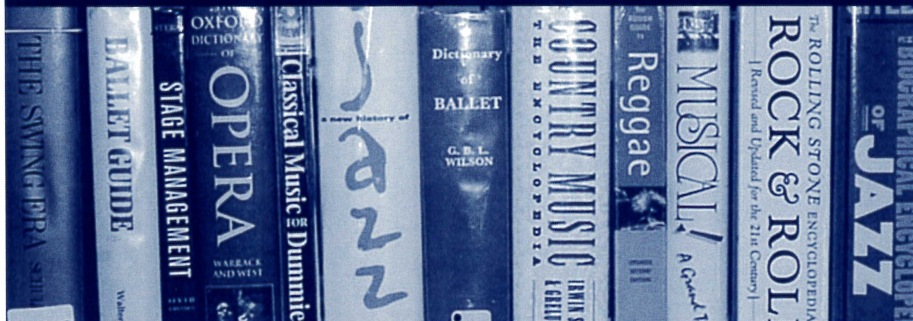
At NEOUCOM, we teach
not only the *science* of
medicine, but also the
art of healing.

What If... everyone had a
NEOUCOM doctor?

 **NEOUCOM**
NORTHEASTERN OHIO UNIVERSITIES
COLLEGE OF MEDICINE
www.neoucom.edu

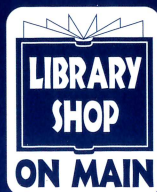
NEOUCOM is an equal opportunity employer and educator.

Top-shelf arts and culture (Within easy reach)



**Akron-Summit County
Public Library**

Main Library, Mobile Services
and 17 branches located
throughout Summit County
330-643-9000
www.ascpl.lib.oh.us



Your source for novel gifts
and gently used books
Operated by the
Friends of Main Library
1040 E. Tallmadge Ave.,
Akron 330-643-9070
www.lsom.org



Hiram College
Hiram College

Intimate Learning.Global Reach.

Experience our distinctive curriculum. Hiram has two different learning formats for students—for young adults, the **traditional college** offers our renowned academic program in a residential environment; for adult learners, the **Weekend College** lets students earn their degrees with minimal interference in work/family responsibilities.

Call 1.800.362.5280 or visit www.hiram.edu.
For information on the Weekend College
program, please call 330.569.5161.



Fun and Free
for the Whole Family!

2003-2004 Exhibitions

**Hans Hofmann: Selections from the
Berkeley Art Museum Collection**
September 20, 2003 – January 3, 2004

Jim Dine Prints: 1985-2000
January 17 – March 27, 2004

**Akron
Art
Museum**

70 East Market Street
Akron, Ohio 44308-2084
330.376.9185
www.akronartmuseum.org

The arts
start here.

Art starts with inspiration.
Inspiration starts with new experiences.
New experiences are our business.
That's the Akron Advantage.

www.uakron.edu



"At The University of Akron, we have set the stage for world-class excellence in the arts. By developing new generations of artists, partnering with arts organizations, and providing local venues for internationally-acclaimed theatrical and musical productions, we continue to help define the social and cultural landscape of Northern Ohio."

- Luis M. Proenza
President, The University of Akron

**The
University
of Akron**

The University of Akron is an Equal Education and Employment Institution