

*Listen to
your dreams.*

Valley Savings Bank has been contributing to
the rhythm of life in this community since 1923.
Our commitment is to help our customers reap the
benefits of their hard work and dreams.



330-923-0454

www.valleysavingsbank.com

140 Portage Trail and 505 Graham Road, Cuyahoga Falls • 3707 Darrow Road, Stow

WEATHERVANE

COMMUNITY PLAYHOUSE

Drea Bacon

Mainstage Production No. 519

2005-2006

Wait Until Dark

By Frederick Knott

Simply Grand
ENTERTAINMENT

April 26 May 14, 2006



Always Listening

With U.S. headquarters in Stow, Ohio, Audio-Technica is a worldwide group of companies devoted to the design, manufacture, marketing and distribution of problem-solving audio equipment. Initially known for state-of-the-art phonograph cartridges, A-T now creates high-performance microphones, headphones, wireless systems, mixers and electronic products for professional and home use.

Winner of numerous industry awards, Audio-Technica manufactures products that set quality, durability and price/performance standards for major concert tours, broadcast and recording studios, corporate and government facilities, theaters and house-of-worship venues. Learn more at www.audio-technica.com



audio-technica
always listening™

To all Weathervane Playhouse Patrons:

This Invitation is for You!

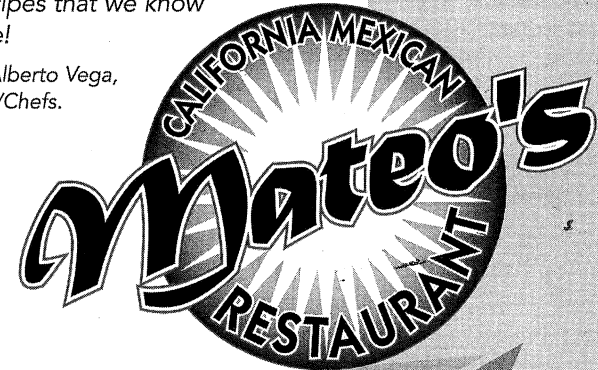
Please join us at **Mateo's** for our *California Mexican Style Cuisine* which is different from south of the border cooking and is known for its eclectic and flavorful dishes.

"Mateo's Restaurant is defined as classic, colorful, eclectic, with exquisite presentation. Mild and flavorful dishes, using only the freshest and highest quality products available."

— Akron Beacon Journal, West Akron Sun and Scene Magazine.

"The dishes on our menu are original recipes that we have created and prepared. We have 28 years of travel, creativity and experience to bring you new recipes that we know you will love!"

— Zoila and Alberto Vega,
Proprietors/Chefs.



- Traditional & Fresh Fruit-Flavored Margaritas
- Imported Beers from Latin America

Mention the Weathervane Playhouse to your server and we will reward you with a 10% discount off your next meal (food only, please).

Tuesday – Thursday 11am to 9pm, Friday 11am to 10pm
Saturday 9am to 10pm, Sunday 9am to 8:30pm
Closed Mondays.

330.836.3944

1375 N. Portage Path, Akron, OH 44313

We are conveniently located just down the street from the Weathervane, turn left onto Akron-Peninsula Rd. turn right on Portage Path and a quick left into Mateo's.



2005-2006 *The 71st Season*

Weathervane Community Playhouse

1301 Weathervane Lane, Akron, OH 44313-5186

330-836-2626 ♦ Fax 300-873-2150 ♦ www.weathervaneplayhouse.com

Snow White and the Seven Dwarfs

Adapted by Jessie Braham White
July 30 - August 14, 2005

Much Ado about Nothing

Comedy by William Shakespeare
September 14 - October 2, 2005

Over the River and through the Woods

Comedy by Joe DiPietro
October 19 - November 6, 2005

***Joseph and the
Amazing Technicolor Dreamcoat***

by Tim Rice and Andrew Lloyd Webber
Nov. 25 - Dec. 18, 2005

Crowns

by Regina Taylor

A gospel musical based on the best-selling book *Crowns:
Portraits of Black Women in Church Hats*
January 11 - February 5, 2006

***Anitgone* by Sophocles**

February 17 - March 5, 2006

Lend Me a Tenor

Comedy by Ken Ludwig
March 22 - April 9, 2006

Wait Until Dark

Thriller by Frederick Knott
April 26 - May 14, 2006

***Aladdin* Performed by the Piper Puppets**

May 6, 2006

The Sound of Music

by Richard Rodgers & Oscar Hammerstein II
June 14 - July 16, 2006

Angels in America

by Tony Kushner

Millennium Approaches -- Nov. 10 - 19, 2005
Perestroika -- May 18 - June 4, 2006

Patron Information

* **Emergency Exits** located at the left front of the auditorium and left side of the lobby. Front door and lobby doors will also be used.

* **Restrooms** Located in lobby alcove - wheelchair accessible.

* **Handicapped Services** Seating for a limited number of wheelchairs. Please notify in advance if needed.

* **Assistive Listening Devices** Available thanks to the generosity of Virginia and J. Robert Wilson.

* **Patrons:** Expecting a call? Leave name and seat number with the House Manager. *Please turn off your cell phones, pagers and audible watches.*

* **Beverages and Food** may not be taken into the auditorium during performances.

* **Use of Cameras and Recording Devices** is prohibited during performances.

* **Curtain time** Wed./Thurs. at 7:30 p.m., Fri./Sat. at 8 p.m. and Sun. at 2:30 p.m.

* **Latecomers** will be seated at the rear of the auditorium during a suitable break in the play if space is available and may take their reserved seats after intermission.

* **Exiting the Theater** Please remain seated until the auditorium lights are on. Parking lot illumination assures that getting to your car will be easy and secure.

* **Smoking** is permitted outside the building.

* **Lost and Found** items will be held at the Ticket Office until claimed.

* **Comments** from audience members are always welcomed with interest. Please feel free to write to Weathervane to express your views and opinions about our productions. Send your comments to: *Executive Director, Weathervane Community Playhouse.*



Patron

Generosity

Weathervane appreciates the continuing strong support of individuals, corporations, foundations and other donors who help finance the theater's operations, capital improvements and endowment program. Weathervane is classified as a 501(c)(3) organization and contributions are tax deductible. Following are some of the many ways in which you can take pride in your support of the art of theater in our community.

*** Become a Weathervane Member**

Your annual support makes you a voting member of Weathervane Community Playhouse. You'll receive discounts on educational programs and other benefits, based on the membership level you choose. Members are invited to Weathervane's annual meeting and to other special events. Memberships are renewable annually, beginning at \$75 (Contributing), and continuing at Sustaining, Patron, Silver, Gold, Platinum and Diamond Levels. Membership is actively solicited in the fall but is accepted at any time. Members are recognized in the Playbill.

*** Give a Special Gift To Say You Care**

Special donations may be made at any time to memorialize a friend or relative whose interest in Weathervane was significant to his or her life. You may also recognize and celebrate important dates or current achievements of relatives, friends or associates.

*** Remember Weathervane in Your Will**

What better way to carry on your tradition of support to Weathervane than by a planned gift. By taking advantage of the tax laws which encourage charitable giving, the U.S. Government will share in the cost of your gift to Weathervane. Your gift can fulfill a specific purpose or project while providing your estate with tax savings. To help ensure that Weathervane will continue, please contact our Executive Director for more information.

*** Check For Matching Gifts** Many national and local corporations will

match your donations to Weathervane, increasing your generosity to the theater. Please check whether or not your company participates in such a program.

*** Designate Gifts To Local Foundations**

Several of this area's larger foundations accept memorial and tribute gifts in the name of specific organizations such as Weathervane Community Playhouse. Such gifts help assure continuing grants to the theater's operations and special projects. We are enormously grateful for the impressive history of foundation support in this community.

*** Sponsor or Underwrite a Production**

Our productions may be underwritten by local corporations or foundations. Benefits can include private "command performances" and special receptions for employees and friends when your business chooses this important method of support. Please call 330-836-2626. We'd like to discuss this kind of opportunity with you.

* **Capital Project** The construction segment of the Capital Project in 2000 included a scene shop with basement storage, a 2nd-floor classroom and rehearsal hall, soundproof production booth, elevator and fly gallery pocket above the stage and installation of the rigging system for the fly gallery. Donations for Stage Two of the project continue to purchase classroom furnishings, update the lighting system, renovate the lobby and replenish the Capital Fund for maintenance and repairs.

The Best Place For Fine Furniture in Greater Akron is at Wayside

HENREDON

- Over 200,000 sq. ft. of inventory.
- Providing friendly, responsive service for over 68 years.
- Professional interior designers on staff.
- We buy and sell for less ... every day.

Fine pieces from these quality manufacturers on display:

Kincaid • Pennsylvania House
Stanley • Lexington • Nautica
Lane • Smith Brothers • Flexsteel
Bob Timberlake • Cochrane
Serta • Broyhill • Clayton Marcus
Canadel • Howard Miller • Hooker
Saloom • Crescent • Dozens More

Financing available on most Henredon purchases. See store for details.

Visit Our New Premium Furniture Clearance Outlet

Wayside
furniture

"Where You'll Find Better Furniture Priced Lower"

1367 Canton Road Akron On Route 91,
just 1/4 mile south of Route 224
Shop Daily 10 to 9, Saturday 10 to 6, Sunday 1 to 6
Visit our website: www.wayside-furniture.com

330-733-6221
Toll Free 877-499-3968

Experience the dedication and talent of spirited performances.



Our range of legal expertise will move you.

Proud to Support the
Akron Arts Community

**VORYS, SATER,
SEYMOUR AND PEASE LLP**

First National Tower • 106 South Main Street
Akron, OH 44308-1417
tel (330) 208-1000 • fax (330) 208-1001
www.vssp.com

Akron, OH Cleveland, OH Columbus, OH Cincinnati, OH Alexandria, VA Washington, DC

3 Hiram College

INTIMATE LEARNING. GLOBAL REACH.

3 DISTINCT PROGRAMS AT ONE PRESTIGIOUS INSTITUTION

Hiram's **residential program** offers students unmatched opportunities for study abroad and hands-on learning through our unique academic calendar. Our Tuition Guarantee locks in tuition and fees for four years, making college costs predictable. Call 800.362.5280.

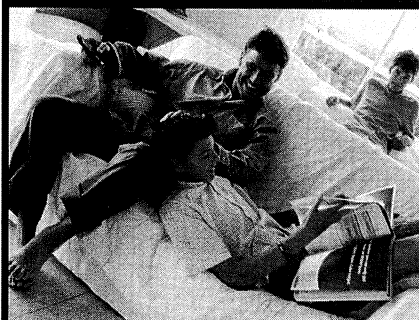
Working adults can earn their degree by taking classes on alternate weekends through the **Weekend College at Hiram College**. Students enjoy small classes, flexible scheduling, and career counseling. Call 330.569.5161.

Hiram's new **Master of Arts in Interdisciplinary Studies** is an innovative and flexible program. Students can earn their master's in as little as two years by taking classes on alternate weekends. Call 330.569.6111.

www.hiram.edu

relax.

Business Insurance • Personal Insurance • Life Insurance • Employee Benefits



LEONARD
Insurance Services

Providing Professional Insurance Service Since 1984.

4244 Mt. Pleasant St. N.W. Suite 200
North Canton, Ohio 44720
1-800-451-1904 / 330-266-1904 / Fax 330-498-6946

www.leonardinsurance.com



History

From the Barn to the Valley



Four society women urged Weathervane Playhouse into existence in 1935 - Grace Hower Crawford, Laurie Schwan, Helen Troesch and Muriel Maclachlan. They started with amateur theatricals at Coach House Theater, then as now part of Akron Woman's City Club. Back then Coach House was a club theater with closed membership and profits going back to the club. This left nothing for theatrical expansion or experimentation, so the ladies set up shop in a barn owned by U.S. Senator Charles Dick on Marshall Avenue. They had no money so they planned a carnival. After expenses, they cleared \$65 and declared themselves good to go.

Friends assisted in cleaning the barn that had been a garage for the Senator's cars. They scrounged for seats, curtains and a coffee pot. Seven fully costumed and staged plays were presented during the first three weeks of the summer of 1935. The audience applauded while bringing cushions from home to sit on -- the benches were hard. There was no running water or heat in the barn, but the operation had a name -- Weathervane, named for the chancicleer on the cupola of the barn. The ladies agreed that they would produce everything -- comedy, tragedy, Shakespeare, new works -- even opera. They also decreed that anyone who fit a part could be on their stage.

"The barn" was home until 1951 when it was sold, leaving the troupe homeless. The Board renovated a cement block building on Copley Road. This served until the late 1960's when the troupe moved to the Valley. In the early years,

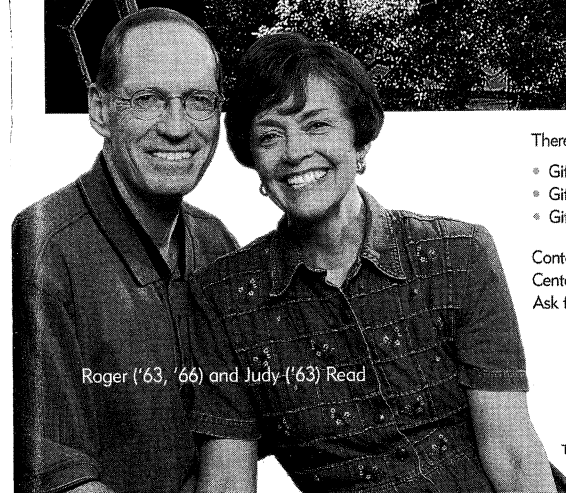
directors came from the membership and were charged with casting, costumes, settings and publicity. By 1960, there were so many shows that Bob Belfance was hired as theater director. Along with custodian/ticket manager Nora Scott, the two-person staff relied on volunteer support.

A Women's Board was formed in 1938 to offer volunteer and financial assistance. The Youth Theater Workshop grew out of classes offered by the original founders. Muriel Maclachlan was particularly energetic in teaching children, bringing in experts in dance and voice to assist her in teaching the youngsters. Muriel's classes grew until they became today's Education Department. Project STAGE®, a program with reduced-price, school day matinees for students, was added in the early 1990s.

A fund-raising drive in the late 1960s built the present facility on Weathervane Lane. The Playhouse opened in 1970 with Maggie Moore's production of *Dark of the Moon*. Grace Crawford, who died in 1971, left a legacy to pay off the mortgage. Construction made possible by the most recent Capital Campaign added classrooms, rehearsal space, scene shop, additional prop storage, elevator, library, fly gallery, stage mechanics, a sound-proof production booth and a costume shop, and also upgraded the roof and HVAC system.

Weathervane celebrated its 500th Mainstage production with the award-winning *The Laramie Project* in February, 2003. The John L. Dietz Classroom Theater for students and black box productions had its inaugural production as part of our 70th Season, opening with *Angels in America: Millennium Approaches* in January 2005.

Invest in the future. Invest in The University of Akron.



Roger ('63, '66) and Judy ('63) Read

There are many ways you can give to The University of Akron.

- Gifts of Cash
- Gifts of Appreciated Property
- Gifts of Real Estate
- Bequests
- Gift Annuities
- Charitable Remainder Trusts

Contact David Horn, Director,
Center for Gift and Estate Planning at 330-972-6870.
Ask for the booklet entitled *Reflecting on Tomorrow*.

The
University
of Akron

The University of Akron is an Equal Education and Employment Institution



Volunteer Sign-Up

Complete and detach this form and return it to the Ticket Office or mail to:
Volunteer Opportunities, 1301 Weathervane Lane, Akron, OH 44313-5186

NAME _____

ADDRESS _____

CITY _____ ZIP _____ PHONE _____

E-Mail Address _____

I am interested in the
following areas:

(Check as many as
you wish)

_____ Usher

_____ Classes

_____ Backstage Crew

_____ Fund Raising

_____ Costuming

_____ Box Office

_____ Acting

_____ Orchestra

_____ House Managing

_____ Set Building

_____ Sound

_____ Play Reading/Selection

_____ Painting

_____ Lighting

_____ Board Membership

_____ Other _____

_____ Best time to reach me at the above phone number _____

_____ I am a subscriber.

_____ I am a donor.

I HAVE AN OPINION...

About tonight's play _____

About the current season _____

About future seasons _____

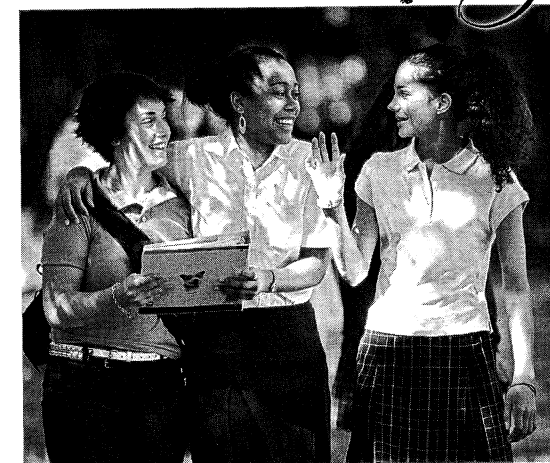
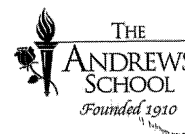
I have a fund-raising idea. _____

We appreciate, and often respond to, opinions offered about our work. Be sure to fill
in your name and address above if you wish a response or would like to be contacted.

the Andrews Advantage

The Andrews Advantage is a curriculum
designed to encourage critical thinking
skills. Intensive writing, insightful reading
and effective communication across all
disciplines prepare students for a lifetime
of learning.

Andrews has it all! Day school and
boarding options, small class sizes,
athletics, fine arts, and a world-class
equestrian program. Call the Admissions
office at 440-942-3606 or visit
www.andrews-school.org to find out
how The Andrews Advantage can benefit
your daughter."



Prepared for College, Prepared for Life!

The Andrews School ~ www.andrews-school.org ~ 38588 Mentor Ave. Willoughby, Ohio 44094



Become a Part of Summit County's Musical History

Special Collections, the Library's division responsible
for maintaining local history materials, is planning a
permanent collection of area music from Summit
County-based musicians, professional or amateur,
past and present.

Our local music wish list includes recordings by local

- pop
- rock
- blues
- jazz
- gospel
- classical
- R&B
- rap/hip-hop
- country
- folk and ethnic recording artists

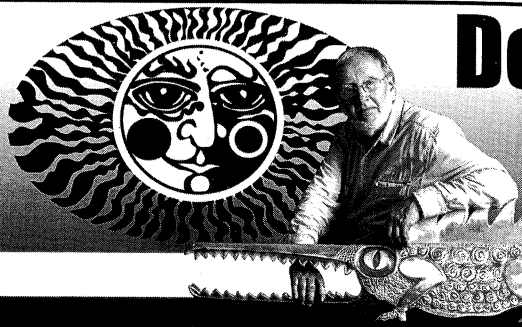
Also accepting related
historical materials
such as photographs,
posters, programs,
flyers and videos.

How?
By participating in a new
initiative to collect and
preserve Summit County's
rich musical heritage!

If you are willing to donate your materials to the
Library, please contact the Special Collections
Division at 330-643-9030, by e-mail at
speccollections@akronlibrary.org or visit the
Web site at www.akronlibrary.org/main-sc.html

All materials will be housed in the Library's new
Special Collections Division at Main Library





Don Drumm

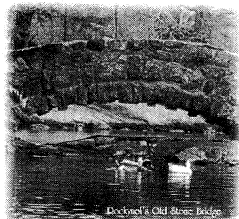
Studios & Gallery

437 Crouse St., Akron
330.253.6268
m-f: 10-6, sat: 10-5
500+ artists

shop on-line:
DonDrummStudios.com

The Longer I Live
the More Beautiful
Life Becomes.

— Frank Lloyd Wright



Rockynol...You'll Be Happy to Call Us Home!

ROCK RYNOL

Akron's Premier Retirement Community

330-867-2150



Amer
Cunningham
Co., L.P.A.

Attorneys and Counselors At-Law

159 South Main Street, Suite 1100 Akron, Ohio 44308

Phone: 330/762-2411 Fax 330/762-9918

Visit us online at www.amer-law.com



Ticket Information

* **Tickets** Purchase in person or charge by phone with Visa, MasterCard or Discover at 330-836-2626, Tuesdays through Fridays 10 a.m. to 5:30 p.m. and on performance Saturdays from noon to 5:00 p.m. *Reservations are also required when using coupons from your Weather-vane Super Coupon Book, complimentary tickets or coupons offered from any other cooperating arts organization.* Please arrive 20 minutes before curtain time to pick up your tickets.

* **Special seating** Please inform us if you have seating preferences due to visual, auditory or other physical needs. Please remember orders are filled on a first-come, first-served basis with season subscribers and advanced group sales taking first priority.

* **Season Subscriber Exchanges** must be phoned in at least 24 hours prior to your originally scheduled performance. We can't always guarantee the same seats but we'll give you the closest available re-

placements. An upgrade fee applies when changing from a Preview Night. *If you cannot use your subscription seats, please call us at least 24 hours in advance to release them. We will recognize this as a donation.*

* **Student Rush Tickets** go on sale 30 minutes before curtain time. Students with a valid ID may purchase any remaining tickets for half price. Rush tickets cannot be reserved in advance.

* **Discounted Group Reservations** are available for groups of 15 or more. Call Weathervane at 330-836-2626 to learn how you can entertain friends, associates or clients with a night at the theater or to plan a fund-raising event for larger groups.

* **Gift Certificates** are available at any time in any amount you choose.

* **Recycle your playbills** If you do not wish to keep the playbill, please drop it in our recycling box as you exit the theater.

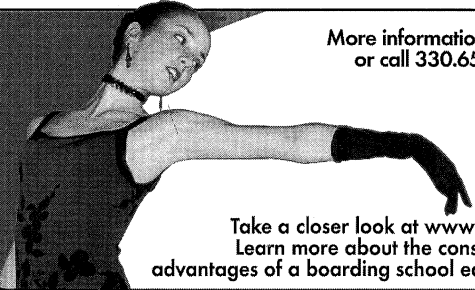
THE Grotto

ON MERRIMAN

Seafood & Steaks at casual dining prices.

1841 Merriman Rd.
Akron, OH 44313
330.869.4981

One of the nation's **finest** boarding schools is not in New England




More information online or call 330.650.9717.

Open House:
Sat., Oct. 29, 2005
Sat., Apr. 29, 2006

Take a closer look at www.wra.net.
Learn more about the considerable
advantages of a boarding school education.

WESTERN RESERVE ACADEMY Hudson, Ohio / Coed / Day & Boarding / Grades 9-12

PROUDLY
SUPPORTING
THE ARTS.



One Stop Shopping from

CUTLER **GMAC**
Real Estate

TITLE ONE AGENCY **1** **MORTGAGE ONE** 

www.cutlergmac.com

CUTLER/GMAC Real Estate is the solution to *all* your home service needs. In one stop, you'll find a real estate, title and mortgage company to simplify your home buying/selling process. Visit our award-winning website to assist in your home search and provide answers to many of your questions.

An independently owned and operated firm



New members are welcomed.

Margaret Dietz President
Jill Forster First Vice President
Wendy Cooley Second Vice President

Lois SimmonsCorresponding Sec.
Sue SmithRecording Sec.
Jill ForsterTreasurer

Art Gallery	Marci Paolucci
Boutique	Mary Wolfman
	B.J. Ziegler
Boutique Treasurer	Barbara O'Connor
Cast Suppers	Randie Sass
Costumes	Henrietta Cook
Hospitality	Janet Budai
	Marta Williger
Hostesses	Bess Raines
	Wendy Cooley

House Committee Sue Smith
Membership Lois Simmons
Newsletter Lois Simmons
Pat Weill
Nominating Nancy Ziegler
Murder Mystery Karen Burrridge
Puppet Show Betty Williams
Leslie Lund

Our lobby Gift Boutique is a fund-raising project of our Weathervane Women's Board. Shop from one hour before curtain time or during intermission for great gift items. Prices are extremely reasonable and the items on sale include a

delightful variety from clowns and animal figures to pens, pins and earrings and some special items for the “men” in your life. Our Boutique volunteers will also assist you with information on purchasing gallery art works.

Weathervane Playhouse is a member of American Association of Community Theatre,
Akron Area Arts Alliance and Ohio Community Theatre Association.



akron area **arts** alliance





Weathervane's Professional Staff

ELYNMARIE KAZLE (Executive Director) is in her ninth Weathervane season. Her 25+ year theatre career began in stage management then moved into producing, fundraising and public relations. She's had the pleasure of working with a wide range of artists from Baryshnikov to Tommy Tune to Viggo Mortenson, in theaters such as The Mark Taper Forum, San Diego's Old Globe, Sacramento Theater Company, Opera Columbus, Great Lakes Shakespeare Festival and Brooklyn Academy of Music. Akron played an important part of her career early on when she apprenticed with Tom Skelton at Ohio Ballet. In addition, past experience includes a stint with the *Wall Street Journal*, working at Brandt & Brandt, Robert Freedman Dramatic Agency serving as cultural ambassador to Sweden. She has served six years as USITT's VP of Membership and Development where she founded the nationally-known Stage Management Mentoring Project. She lives in Akron with husband Mark and her 10-year-old son Banno.

JANIS L. HARCAR (Director of Marketing & Development) holds an M.A. in Arts Administration from The University of Akron and a B.S. in Music Education from Kent State University and has been a Weathervane staff member since 1993. She serves as the Artistic Director of the Ravenna Community Choir and Director of St. Paul Lutheran Church Choir also in Ravenna. Jan was honored with the 2003 Trustees Award.

ALAN SCOTT FERRALL (Scenic Designer/Technical Director) began at Weathervane under the tutelage of John R. Thomas. This is his ninth season. Before Weathervane, he worked at Cuyahoga Falls High School where he was awarded a Design Excellence citation from USITT

and a place in *Who's Who Among America's Teachers*. He has designed for many local high schools as well as for The Players Guild, Cleveland Signstage and Channels 45/49. This past year he was awarded an Excellence in Set Design from the Ohio AACTFEST for *A Lesson Before Dying*. Scott has earned four Chanticleer Awards -- one as stage manager for *Fences*, the others as lighting co-designer for *A Man for All Seasons* and lighting designer for *The Laramie Project* and *A Lesson Before Dying*. He takes great pleasure in writing the end-of-the-season revue for The Not-Ready-for-Mainstage Players who appear at our annual Chanticleer Awards Dinner.

SEAN McCONAHA (Director of Education and Producer of Youth/Family Productions) holds a dual major in Theater Performance and Pre-Law from West Virginia Wesleyan College and an M.A. in Theater from The University of Akron. He is a free-lance actor and director throughout northeastern Ohio. Sean directed the OCTA award-winning production of *Romeo and Juliet* as well as Chanticleer winners for Best Production, *The King of the Kosher Grocers* and *A Lesson Before Dying* and the inaugural Dietz production of *Angels in America: Millennium Approaches*. He lives in Bolivar with wife, Beth, daughters, Leda and Delaney, and twins Zoe and Griffin.

KEITH D. CAMPBELL (Supervisor Front-of-House & Patron Services) holds a B.A. in English from The University of Akron, where he served as editor of *The Buchtelite* and sang with the Akron Symphony Chorus. During the summers of 1995 and 1996, he interned in the box office at Porthouse Theatre Company. Keith joined the Weathervane staff in November 1996 and was honored with the 2005 Trustees Award. He lives in Akron.



Professional Staff continued

JOHN COTTER (Business and Public Relations Assistant) has the duties that come with helping Jan and Keith in the Marketing and Box Office areas. He also coordinates our Acme Community CashBack program and urges everyone to save their Acme register tapes and bring them to him at the Playhouse. John retired after 36 years with Ohio Edison and has been a long-time volunteer of the Playhouse having served on the Production Board as its President and Co-Chair of Properties. He has worked backstage for many productions and has won Chanticleers for Properties Design for four productions. He is, however, most proud of his four grandchildren, Dana, Nicholas, Kristin and Sammy.

KATHRYN A. KOHL (Assistant Technical Director) holds a degree in Elementary Education from BGSU and a Master of Business Management degree from Aurora College in Aurora, IL. She began her theater career as a volunteer on many lighting, set construction and props crews. She won a Chanticleer for properties co-design of *The Philadelphia Story*. Kathy also serves as Resident Master Carpenter and Master Painter for the Theatre Department at Firestone High School. She lives in West Akron with hus-

band Doug and their three children, Stephanie, Zachary and Katie.

DREA JEAN L. BROWN (Data Services Manager) holds a Master of Science degree in Technical Education and a Bachelor of Science degree in Education from The University of Akron. She is an active member of Delta Sigma Theta Sorority, Inc. Akron Alumnae Chapter. Drea says her major priority is spoiling her grandchildren. Balancing her time with work and family, she still finds time to crochet baby blankets for the Neo Natal Unit at Children's Hospital in Akron, and lap afghans for the Life Care Facility in Pittsburgh, PA.

BARBARA TROTTER (Volunteer Coordinator) holds a Master of Arts degree in Communications from the New York Institute of Technology. She teaches speech and communication courses at Stark State College of Technology in North Canton. Barb began volunteering with Weathervane Community Playhouse in 2000, working backstage on props crews. She designed costumes for the productions of *Arsenic and Old Lace* and *Proof*, both in 2003. A member of the Weathervane Women's Board, Barb lives in Akron.

Many Thanks to Our Season Sponsors

Ohio Arts Council -- Season Sponsor
WKSU 89.7 FM -- Season Sponsor
Buckingham, Doolittle & Burroughs --
Much Ado about Nothing
The Goodyear Tire and Rubber Company --
our Youth/Family Series
Sisler McFawn Foundation -- Project STAGE
ONMOVA Solutions Foundation --
Project STAGE
Akron Publishing Company - Ad Sales
Minix Design - Graphic Designer

Greystone Hall -- Reception Sponsor
The Grotto on Merriman -- Reception Sponsor
Watch for the Grand Opening of the
Grotto at Tallmadge Circle featuring the
"Grand Buffet"
Tiffany's Bakery -- Opening Night Cakes
Ashe/Graves Management Group -- *Wait Until*
Dark
Summa Health System Foundation -- *The*
Sound of Music



Board of Trustees

Weathervane Community Playhouse is a non-profit 501(c)(3) corporation operated by a board of volunteer trustees representative of the general community. Regular monthly meetings of the Board of Trustees are open.

Officers

Mary Beth Kluge	President	Jim Horvath	Assistant Treasurer
William Glaeser	First Vice Pres.	Chic Carlson	Secretary
Christopher Esker	Second Vice Pres.	Margaret J. Dietz	Historian
Jack Steele	Treasurer	George Moxon	Immed. Past Pres.

2005-2006 Trustees

Kathy Ashcroft	Margaret Dietz	Roy Hartz	Lucy J. Randles
Aaron S. Berke	Rozell Duncan	Charles Korecki	Virginia Sayre
Henry Bishop	Jon Fiume	Karen Lefton	Chas Schreckenberger
Desiree Bolden	Harold Foster	Myron Lewis	James Sneed
Robert Core	Barry Friedman	Gregg Manes	Richard Worswick

Advisory Board Members

Mary Adams	W. Scott Emerick	Eric Jones	Thomas R. Trotter
Chuck Ayers	Helen Fleming	Ardith M. Keck	Bob Velotta
Bunny Ballance	Jill Forster	Dede Klein	Shari Whitfield
Madeline Bozzelli	Dr. Penelope Frese	Leslie Lund	Mary Whitmer
Stanley Brandt	Ian Haberman	Eileen Moushey	Mary Wolfman
Ann Brennan	Richard Harris III	Jim Nilsen	Mel Wolfman
Nancy Cates	Bob Hasman	Jo Ann Oelschlager	Mona Wolfman
Ron Cimini	Marilyn Heagerty	Margo Snider	June Zeno
Frank Comunale	Libby Jacobs	Dr. Susan Speers	

Production Board

Charles Korecki and Bill Berry -- Chairs

Auditions	M.J. Coulson
Costume Shop	Betty Williams
Lighting Department	Mark A. Zimmerman
Sound Department	Charles Korecki
Stage Management	Bill Berry
Play Selection	Ian S. Haberman
Women's Board Representative	Margaret Dietz
Salon Series Coordinators	Tom Abdoo & Sue Smith
<i>Ex-Officio from the Staff:</i>	
Executive Director	Elynmarie Kazle
Technical Director	Alan Scott Ferrall
Producer of Youth/Family Productions	Sean McConaha
House Managers	John Cotter



Our Generous Donors

Did you know that the average cost, per seat, to produce a Weathervane show is \$32.85? Thanks to the generosity of the following individuals, corporations and foundations, the cost of your seat is \$20 or less! We gratefully acknowledge their support.

SUPER FOUNDERS (Gifts of \$10,000+)

City of Akron	Ohio Arts Council
Estate of Vaughn G. Austin	State of Ohio
Estate of Paul A. Daum	The University of Akron
The GAR Foundation	Weathervane Women's Board

FOUNDER'S CIRCLE (Gifts of \$5,000+)

Akron Community Foundation	OMNOVA Solutions Foundation
H. Peter Burg Fund of ACF	Charles E. & Mabel M. Ritchie
Mary B. & Dr. George L. Demetros Foundation	Memorial Foundation
Margaret J. Dietz	Sisler McFawn Foundation
John S. & James L. Knight Foundation	Lloyd L. & Louise K. Smith
John A. McAlonan Fund	Memorial Foundation

PLATINUM MEMBERS (Gifts of \$1,000+)

INDIVIDUALS

David N. Ashe	Roy & Mary Hartz♦
Susan C. & Patrick T. Baker	Charlotte & Jim Horvath♦
Family of Roger G. Berk, Sr.	Elynmarie Kazle & Mark A. Zimmerman
Ann & Dave Brennan	

CORPORATIONS & FOUNDATIONS

Aircraft Braking Systems Corporation	Gay Community Endowment Fund
F.W. Albrecht Family Foundation	The Goodyear Tire & Rubber Company
Glenn R. & Alice B. Boggess Memorial Foundation	The Lehner Family Foundation
Brennan Family Foundation	Millennium Fund for Children
Bridgestone Firestone Trust Fund	Walter Mirapaul Foundation
Lisle M. Buckingham Fund of ACF	Laura R. & Lucian Q. Moffitt Foundation
Dominion East Ohio	The RC & Katherine Musson
FirstMerit / Akron	Charitable Foundation
	M.G. O'Neil Foundation

GOLD MEMBERS (Gifts of \$500 - \$999)

INDIVIDUALS

David N. Ashe	Lillian L. Hudimac	Gregg A. Manes♦
W. Scott & Sandra Emerick	Dr. & Mrs. Edward Koosed	George Moxon II♦
Mary & William Glaeser♦	Leslie & Richard Lund	Mary & Mel Wolfman
Janet & Jim Heilmeyer	David & Orlene Makinson	

CORPORATIONS & FOUNDATIONS

*A. Schulman	National City Bank
Michelson Foundation	*Summit County Internists, Inc.
Myers Industries, Inc.	

♦Denotes Board of Trustees



Our Generous Donors continued

SILVER MEMBERS (Gifts of \$250 - \$499)

INDIVIDUALS

Juanita & Chic Carlson
Mildred Collis
Frank C. Comunale
Susan & Michael Davis
Dr. Richard & Mary Beth Ellison
Helen & Chisna Fleming
Barry Friedman
Dr. Jack & Libby Jacobs

Mrs. Harvey Karam
Mary Beth Kluge♦
Kathy & Doug Kohl
Shelley & Thomas Koutnik
Patricia Obenour
Barbara B. O'Connor
Judy & Roger Read
Helene & Bill Rogovy

Michael Russell
Dr. Douglas & Jane Sanders
Dr. Steven P. Schmidt
Dr. Susan D. Speers
Jack Steele♦
Martha Kaltenbach & Tom Trotter
Connie & Bob Velotta
Libby & Jeff Wilson

CORPORATIONS & FOUNDATIONS

Brockman, Coats, Gedelian & Co. *GoJo Industries *Zuckerman Consulting Group
*Cedarwood Companies *Morris Berzon Fund of the
*Davey Tree Expert Company Jewish Community Board

PATRON MEMBERS (Gifts of \$150 - \$249)

INDIVIDUALS

David Ashe
Kathleen Ashcroft♦
Mary & Rollie Bauer
Curt Brown
Carol Button
Mr. & Mrs. James D. D'Ianni
Rozell R. Duncan, Ph.D.♦
Marie & Marc Dusini

Dr. & Mrs. Stephen A. Farkas
Jon A. Fiume♦
Diana & John Gayer
Ellen & Karl Hay
Jay Hershey
William W. & Anne M. Lowery
William Manby
Margaret & John McBride

Leslie & David Nelson
Lucy J. Randles♦
Dr. John M. Ream, Jr.
Virginia A. Sayre♦
Charles Schreckenberger♦
Betty Watterson
Pat & Leo Weill
Harold F. White

CORPORATIONS & FOUNDATIONS

*AAA - Akron Automobile Assoc. Flexsys America North Akron Savings
Akrochem Corporation *Hitchcock Fleming & Assoc. *Peters, Tschantz & Bandwen, Inc.
Akron Tool and Die Infocision Management Corp. *Smithers Scientific Services
*Amer Insurance *Maynard Family Foundation *Steere Enterprises
*Fifth Third Bank *Mogen Real Estate *Yoder Brothers, Inc.

SUSTAINING MEMBERS (Gifts of \$100-\$149)

INDIVIDUALS

Dr. Miriam Agins
Doug & Mary Ann Bell
Henry Bishop & Karen Wood
Robert W. Briggs
Patricia & James Burke
Timothy H. Champion
Mrs. C.B. Dagilis
Mrs. Carol A. Deeser
Patricia & Thomas Doak
Tatiana & Richard Harris
Marilyn Heagerty
Mary Ann Jackson
Carla & John Kachmar

Dr. & Mrs. Lawrence Kaye
Dr. & Mrs. C. William Keck
Dede Klein
Richard & Judy Kotick
Bruce G. Kriete
Carol Krueger
Margaret Lloyd
Mr. & Mrs. Gary Leidick
Dr. Donald & Wendy MacKay
Virginia D. Moline
N. Joel Moran
The Moushey Family
Dr. George & Janet Nankervis

Jo Ann Oelschlager
John O'Neill
Gloria T. Reich
Cynthia Ross
Sue & Joe Schaut
Lois & Paul Simmons
Sue & Richard Smith
Jean & Ethel Soudry
Mr. & Mrs. Edgar Steinmark
Thomas Stephan
Dr. & Mrs. Robert Stone
James Switzer & Gretchen
Laatsch



Our Generous Donors continued

SUSTAINING MEMBERS - Individuals Continued

Paula & John Troche
Linda Waite
Mr. & Mrs. Jack Wigley

Mona Wolfman
Dr. Jeff Yatsu
B.J. Zeigler

Dan & June Zeno
Laurie Zuckerman

CORPORATIONS & FOUNDATIONS

Business Interiors & Environments *Hottle & Associates, Inc. *SGS Tool Company
Holland Oil Company *Sterling Jewelers, Inc.

CONTRIBUTING MEMBERS (Gifts of \$75 - \$99)

INDIVIDUALS

Joseph Bolta
Carol Boyd
The Core Family♦
Trish & Stephen Crane
Jane & John DeYoung
Todd Dieringer

Bridget & Steve Dolin
Alan Scott Ferrall
Mr. & Mrs. James Forster
Shirley E. Jordan
Dona Bowman & Karlan Kamerer
Thelma & Joseph Rapotec

Nancy & Harold Rex
Barbara & Jim Shriner
Barbara & Russell Stevic
Linda M. Werntz &
Robert E. Cunningham

FRIENDS (Non-Voting)

Mary Jane Baron
Bill Berry
Jeff Brinton
Richard Brockett
Robert Dague
Rebecca DeBolt
Extra Stimulus Inc./Akrobiz.com
Emily Audra Fleisher

George J. Gauthier
James Gilder
Ian S. Haberman
Harry E. Jackson
Bonnie M. Jones
David W. Kellogg
Marilyn & Bill Miller
Richard Oberdorfer

Dr. & Mrs. John Saks
Jewell Cotter Sauser
Jody & Todd Schweiger
Pearl D. Sentelik
Janey & Howard K. Slaughter
Ludwig Stern

SPECIAL 100-HOUR MEMBERSHIPS

Maryanne & John Cotter
Dede Klein
Jo McGarvey

Dana North
Helena Olee

Banno Rothman
Chris Simmons

IN-KIND DONATIONS

Martha Kaltenbach Trotter
Cecilia Sveta
John Cotter
Richard Lund
Jim Horvath

Elynmarie Kazle
Alan Scott Ferrall
Dreajean Brown
Janis Harcar
USITT

Tom Marshall
Tom C. Barnes
Betty Watterson
John O'Neill

*Thank you for your early corporate support for 2006.

Weatherlane Community Playhouse gratefully acknowledges **Allstate Giving Campaign, IBM, SBC, The Lubrizol Foundation, ExxonMobil Foundation, Merrill Lynch and State Farm Companies Foundation** for contributions made through matching gifts programs.

Weatherlane Community Playhouse gratefully acknowledges **The Sisler McFawn Foundation, Akron Community Foundation, OMNOVA Solutions Foundation, Dominion East Ohio and The Millennium Fund for Children of the ACF** for contributions for Project STAGE presentations and Youth Outreach Programs..



In the Bank One Visual Arts Gallery

Marci Paolucci, Weathervane's Gallery Director, has assembled a variety of items created by the visually impaired for the run of *Wait until Dark*. Pieces from Vision Support Services of Akron have been created by participants in the craft programs which include sewing/quilting, leatherwork, woodworking, macramé, rug hooking, knitting, bead work and other crafts. These pieces are a result of group efforts.

Perhaps the most touching of the works are the "quillows," small quilts big enough to cover a child, which fold up into their own carrying case and then become pillows. Some ninety quillows were donated to the Children's Services Board of Summit County last year as part of the Wrapped in Love Program for the children.

For the first time, Weathervane's Gallery exhibits sculpture, these created by blind artists, including three pieces by Chapelle Letman, who works at the Cleveland Sight Center. One piece, a large leather bag big enough to hold a Braille book, was designed and executed by **Terry Kebbel**, a Vietnam veteran who lost his sight four years ago. Other artists include **Linda Hoffman**, who creates small ceramic flowers and other items including a small wire piece of a honeybee; **Joe Crauthamel**, who makes small baskets from clothesline and raffia as well as small ceramic fantasy creatures; and **Rose Dicicco**, age 86, who crochets small animals (bears, ducks, rabbits, etc.). The Cleveland Sight Center instructor is **Denise Buckley**.

There is original art done by sighted graduate students from the Cleveland Institute of Art, representing many aspects of being blind. There is also a huge piece made from thin, coppery looking metal in place of canvas that is very textural in nature. There are words painted on it, then repeated in Braille. The piece has been on display in the Cleveland Sight Center for a very long time and the artist's name is illegible.

Marci comments about this exhibit: "The skill levels vary, but I, as a sighted person, would not be able to make any of the things these blind people have made."

H.O.T. Summer Camps 2006

It won't be long before you begin to plan your summer activities. Weathervane's summer camps are **Hands On Theater** and fun! We offer three summer sessions in our education facility. In a comprehensive theater-training program led by theater professionals, students learn about acting, improvisation, stage directions, auditioning and more. (*Register online at weathervaneplayhouse.com*)

H.O.T. Session 1

June 18 - 29, 2006
6- to 8-year-olds

H.O.T. Session 2

July 2 - 13, 2006
8- to 10-year-olds (no class 7/4)

H.O.T. Session 3

July 16 - 27, 2006
10- to 12-year-olds

Audition

Workshop

Students 13+ years of age
June 18 - 22, 2006

Musical Theater

Students ages 9 - 12
June 18 - 22, 2006

Summer Stock

Students 13 years of age and up
Previous theatrical experience required
Special performances Aug. 18 & 19
Limited to 18 acting and 4 technical positions

August 6 - 19, 2006

9 a.m. to 5 p.m. Monday - Friday

The production will be Edgar Lee Masters' *Spoon River Anthology*.



Welcome from the Executive Director

Welcome to Weathervane.



Spring has finally arrived! And as final preparations are underway here for *Wait until Dark*, I am in New York to see theater and to hopefully find something for our Play Selection Committee to consider as a second selection for our newest series in the John L. Dietz Theater. In the fall, that space will play host to *The Last Five Years*, a wonderful intimate musical which tells the story of a young couple's relationship from opposite ends to the middle. We hope to find a new comedy to pair it with in the spring.

Next season, families and youth will enjoy our summer musical, *Madeline's Rescue*, which is adapted from the best selling children's series and *Joseph and the Amazing Technicolor Dreamcoat*. Our teen actors will spend the spring preparing *Romeo and Juliet* for you.

As for the mainstage, we will focus on comedies, dramas and a musical centered around the theme of family along with a good old fashioned musical review called *Smokey Joe's Cafe* -- a collection of ever so familiar songs by song writers Lieber and Stoller. We begin next season's journey with the Tom Dudznik's funny take on the Italian-Catholic family, *Over the Tavern*. This tells the tale of what can happen when a budding young comic debates religion with a seriously traditional nun. Three other shows in the season were written by artists who, until recently, were still productive and prolific but have, unfortunately, passed away. I know you will be engaged by the drama of Arthur Miller's *All My Sons*, August Wilson's *Fences* and Wendy Wasserstein's funny take on sisters, *The Sister's Rosensweig*. We close with a musical -- *The Full Monty*. Don't be fooled by the title. This musical is about a post-industrial town much like Akron. In this story, the plant has closed and the workers are left to find a way to care for themselves and their families. The solution is not a traditional one, but we can see that they will do nearly anything to keep their families cared for and safe.

This season we had the good fortune to have two plays sold out the last weekend of the run. The 2006-2007 season promises to be every bit as good as the last and you don't want to be left out. Subscription renewals and early-bird options are on sale now ... And, Thank you for coming to see *Wait until Dark*. Remember, the fun of a thriller is not to tell the ending. So, when you recommend this show to a friend, remember to keep our secret! Enjoy the show.

Edmundie Kozle

No one appreciates
a great performance
more than we do.



**We proudly sponsor the
Weathervane Community Playhouse.**

Ashe/Graves Wealth Management Group

David N. Ashe
First Vice President-Investments

Deborah A. Graves
Financial Advisor

One Chagrin Highlands
2000 Auburn Drive, Suite 100, Beachwood, OH 44122
800-274-7862

www.ubs.com/financialservicesinc

You & Us



©2006 UBS Financial Services Inc.
All Rights Reserved. Member SIPC.



Weathervane

Community Playhouse

71st Season – 2005-2006 – Production # 519

April 26 - May 14, 2006



**A thriller by
Frederick Knott**

Sponsored by
UBS Financial Services, Inc.
The Ashe/Graves
Wealth Management Group
David N. Ashe, First Vice President - Investments
Deborah A. Graves, Financial Advisor

Directed by Sarah May

**Stage Manager
Jill Forster**

**Lighting Design by
Derric Nolte**

**Properties Co-Design by
Alison Cooper
Jordan Cooper**

**Sound Co-Design by
Kathryn A. Kohl
Alan Scott Ferrall**

**Costume Design by
Susie Stech**

**Assistant Stage Manager
Michael Pistrui**

**Scenic Designer/Technical Director
Alan Scott Ferrall**

Wait until Dark is produced by special arrangement with
Dramatists Play Service, Inc., 45 West 25th Street, New York, N.Y. 10010.

Weathervane productions are sponsored in part by



Weathervane Community Playhouse, 1301 Weathervane Lane, Akron, OH 44313-5186
Ticket Office: 330-836-2626 – Fax: 330-873-2150 – For staff Emails -- please see website
www.weathervaneplayhouse.com



About the Play & Playwright

About the Play

Welcome to *Wait until Dark*. It has been such fun to revisit this classic stage thriller. In the forty years since the play was written very few new stage mysteries have made it to Broadway. Maybe we have been so inundated with graphic violence on screen and in real life that the creepy, steady unfolding of terror on stage is a forgotten pleasure.

Wait until Dark, however, continues to terrify us because it is set in a time of innocence; doors are left unlocked, and young girls are sent on errands out on the streets of New York City. Today we live in fear of strangers, set our security systems, monitor our phone calls, and mistrust every kindness. But in this wonderful play, set in 1966, we have a victim/heroine who is totally vulnerable and trusting. Susy Hendrix, a young wife, recently blinded in an accident, is easily disoriented and trying to cope in a world of darkness.

She allows three strangers into her Greenwich Village apartment while her photographer husband is away on a job. They are looking for a doll, brought into the country illegally, that they believe may be in the apartment. Who are these men? Are they who they say they are? Why is the doll so important? As the strangers lead Susy through a carefully orchestrated con game, her suspicion grows with every ring of the old land-line phone, every click of the rotary dial, every knock on the door, every call from the corner phone booth. Her trust is destroyed and she is plunged into terror. She must wait for evening to fall so she can fight back.

Wait until Dark is old-fashioned scary stuff and great fun for all. "Be afraid" and enjoy! **Sarah May**, Director

About the Playwright

Frederick Knott was born to English parents in Kiukiang, China, and was educated in England. At Cambridge University, he was named captain of the tennis team. In 1937 he came to the U.S. as a member of the Oxford-Cambridge tennis team which played against a Harvard-Yale team at Newport, R.I. This experience provided the ground work for the character of the "tennis bum" in his first stage hit, *Dial M for Murder*. He served six years as a major in the British army during World War II, then joined the J. Arthur Rank film organization in London. After writing *Dial M for Murder*, Knott couldn't sell the script to anyone so he converted it into a 90-minute television play for BBC for \$400. Eventually Sir Alexander Korda bought the film rights for \$2,800. Korda then sold the rights to Warner Brothers for \$146,000 of which Knott got absolutely nothing. *Wait until Dark* was produced in 1966 and was Knott's last produced play. He died in December 2002 at the age of 86.



Wait until Dark Cast

Mike Talman	Steven Robert Wright ✓
Sgt. Carlino	Barry Wakser ✓
Harry Roat, Jr.	Timothy M. Kelley ✓
Susy Hendrix	Susan Lucier
Sam Hendrix	Sam Capaldi ✓
Gloria	Mattie Kranz ✓
Policemen	Jeff Kostko and Sean Wedig ✓

The action takes place in a basement apartment in Greenwich Village.

Act I

Scene 1 Friday evening
Scene 2 Saturday afternoon
Scene 3 Twenty minutes later

There will be one 15-minute intermission.

Act II

Scene 1 About an hour later
Scene 2 A few minutes later
Scene 3 A minute later.

***For your safety, we request that you remain seated until the house lights have come up at intermission and after the curtain call.**

***The use of cameras, recording equipment and laser pointers is forbidden during this performance.**

***As a courtesy to fellow audience members, please make sure that cell phones and pagers are turned off during the performance.**

***Please do not bring food or drink in the auditorium.**

***NOTE: In case of an emergency in which the performance cannot continue, Calamity Vouchers will be issued for a future performance. Thank you.**

Track Your Favorites

Keep track of your favorites all season long and you'll be prepared to vote for our Chanticleer Awards! Use this list as a guide...

Sound Design	Supporting Actor -- play & musical
Lighting Design	Lead Actress - play & musical
Properties Design	Featured Actress -- play & musical
Costume Design	Supporting Actress -- play & musical
Lead Actor - play & musical	Best Production
Featured Actor -- play & musical	



About Our Director

Sarah May is a well-known Cleveland-area theater director. Sarah began her career as a company member of the Cleveland Play House, then spent ten years in New York City performing, directing and developing education programs for Playwrights Horizons, Henry Street Settlement and Roundabout Theatre. In Cleveland she has served as Director of Education for Great Lakes Theatre Festival and as Artistic Director of Karamu Theatre. She is the winner of the **Northern Ohio Live** Award of Achievement in Theatre for her direction of *A Piece of My Heart* at The Beck Center. She has been nominated for that same award five other times. Her work has been seen at Dobama, Ensemble, Lakeland and Charenton Theatres in Cleveland. She is delighted to return to Weathervane, where she directed Neil Simon's *The Dinner Party* in 2004.

Memorial Contributions were made to Weathervane Playhouse
in memory of **Ruth Eisenzimmer** by

Margaret J. Dietz
Weathervane Women's Board
Barbara B. O'Connor

Memorial Contributions were made to Weathervane Playhouse
in memory of **Patricia "Pat" Weill** by

Margaret J. Dietz
Weathervane Women's Board
Barbara B. O'Connor
Weathervane "Costume Committee"
Betty & Glen Williams

Memorial Contributions were made to Weathervane Playhouse
in memory of **Chisna "Cue" Fleming** by

Randie & Brian Sass	Sheila Motter
Mary & Dave Brown	Libby Jacobs
June & Dan Zeno	Dorothy Jean & Arthur T. Schooley
The Moushey Family	Alita & Richard Rogers
Leslie & Richard Lund	Paul Teagle
Dreajean W. Brown	Barbara & Bob Jenkins
Judy & Richard Kotick	
Mary Louise Kuehnling	

This list represents additional donations since March 14.



Cast Callboard

STEVEN ROBERT WRIGHT (Mike Talman) has been actively involved in theatre for nearly two decades. He has portrayed characters in a wide variety of community and university productions, including: The Scarecrow in *The Wizard of Oz*, Joe in *The Shadow Box* (at the University of North Carolina), Jesus in *The Crucifixion of Christ*, J. Pierpont Finch in *How to Succeed in Business*, Cornelius Hackl in *Hello, Dolly*, The Baker in *Into the Woods* and the villainous Bill Sykes in *Oliver!* Steven was seen recently at Weathervane as Ebenezer Scrooge in a salon reading of *The Christmas Carol*. His professional theatre experience includes the Magical Theatre production of *Willy Wonka and the Chocolate Factory*, in which he portrayed both Grandpa George and Mr. Salt. Numbered among Steven's biggest fans are his wife, Charity, and his daughter, Julia. Steven, an administrator with Woodridge Local Schools, spends his free time amassing degrees. He is currently working toward a Ph.D. in Public Affairs at the University of Akron.

BARRY WAKSER (Sgt. Carlino) is a Stark County Public Defender and has a Bachelor of Arts degree in psychology from Kent State University and a J.D. degree from The University of Akron. This year he has played Tom Davenport in *Inherit the Wind* for The Players Guild and a McDonald's employee in *Exodus from McDonaldland* at Walsh University. In 2005 he was seen as Dr. Seward in *Dracula* for the Louisville Community Theatre and as Phil Benson in *Adaptation* for Walsh University. In 2004 he appeared for Kent Stark Players in *The Madwoman of Chaillot*, for The Players Guild in *Footloose* and *The Diary of Anne Frank* and for the Carnation Players in *Fools*.

Barry last appeared at Weathervane four years ago in *Wit*.

TIMOTHY M. KELLEY (Harry Roat, Jr.) has just rung down the curtain at Coach House Theatre, where he played Schmendiman in *Picasso at the Lapin Agile*. Before that he played Ben in *Broadway Bound*, also for Coach House. He appeared in Weathervane's *Much Ado about Nothing* as Verges (Dogberry's Deputy) and played Dogberry in *Much Ado* at Stan Hywet. He has appeared in *Tartuffe* for Actors' Summit and been on stage at The University of Akron in *Fahrenheit 451*, *The Bear* and *The Taming of the Shrew*. He holds a Bachelor of Arts degree in Theater from The University of Akron and is employed by Carter Lumber Company.

SUSAN LUCIER (Susy Hendrix) was most recently seen as Haley Walker in *Bad Dates* and as Lenny in *Crimes of the Heart*, both at the Solon Arts Center. She has also worked at the Cleveland Play House, Dobama, Karamu and Bad Epitaph Theaters in Cleveland as well as at the Seaside Shakespeare Festival in Nantucket, where she premiered *The Wit and Wisdom of Will's Women*. Susan will be in *Smell of the Kill* at the Nantucket Theater Workshop this summer. She holds a Bachelor of Arts degree in Theater Arts from Case Western Reserve University and she has also studied at the Stella Adler Conservatory of Acting and the Michael Chekhov Association in New York.

SAM CAPALDI (Sam Hendrix), a Northeast Ohio native, is a graduate of Canton McKinley High School and John Carroll University, where he received a bachelor's degree in computer science. Currently working at Ernst & Young in Cleveland in network infrastructure support, Mr. Capaldi recently appeared in *The*



Cast Callboard Continued

Reunion, a short film shot in Akron which will appear in the Cleveland Independent Film Festival, and a documentary about Shaker Heights resident, Dr. Robert White, that will appear on the National Geographic channel. Other acting credits include NBC's *Bet Your Life* and *Arsenic and Old Lace* at The Players Guild.

MATTIE KRANZ (Gloria) is a sixth grader at A.I. Root Middle School in Medina. She recently played the Knave of Hearts in *Alice in Wonderland* at the Cassidy Theater and, in 2004, was Gracie Shinn, the mayor's youngest daughter, in the Medina Summer Collaborative's production of *The Music Man*. She played Lucy in the H.G. Blake Elementary 4th grade production of *A Charlie Brown Christmas* in 2003 and Beth in *Only a Game* for Medina Children's Theater the same year. In her spare time this busy sixth grader studies ballet and jazz, tap and violin.

JEFF KOSTKO (Policeman) began his acting career as Tiny Tim for Pfeiffer Elementary School in 1987 followed by the role of Leroy Johnson in *Fame* at Bryan High School in 1998 where he also played

Dallas in *The Outsiders* in 2000. He was Mike in *Wall of Water* at Kent Stark University in 2003. Jeff has a Bachelor of Arts degree in communication studies from Kent State University and is an inside sales/customer service representative for Novex, Inc.

SEAN WEDIG (Policeman) was co-writer and played a variety of roles in *Sexxe Kraft Tyme* for The Players' Theater Group in 2005 at Case Western Reserve University. Between 2000 and 2004, Sean played Charley in *Where's Charley*, gave voice to the plant in *Little Shop of Horrors*, was Otto Kringelein in *Grand Hotel* and Caiaphus in *Jesus Christ Superstar* for the CWRU Footlighters. He also played Ebenezer Scrooge in *A Christmas Carol* for the Mid-Ohio Valley Players in Marietta. Sean has a Bachelor of Science degree from Case Western Reserve University in computer science with a minor in theater arts. He is a computer programmer for Bridgestone Firestone, and has a wife, Sara. His goal in life to be become independently wealthy and be lazy for the rest of his days.



Backstage Callboard

JILL FORSTER (Stage Manager) is director of Specialty Courts for Akron Municipal Courts. She has a Bachelor of Arts degree in Sociology and an A.A.S. degree in Criminal Justice, both from The University of Akron. Jill has won three Chanticleer Awards for lighting design and is first vice president and treasurer of the Weathervane Women's Board. She is a second-generation Weathervaner: her mother, Jan Michael, was musical director for more than 30 years.

MICHAEL PISTRUI (Assistant Stage Manager) is a tenth grader at Firestone High School who last year provided support on the properties crew for *Snow White* and *Much Ado about Nothing* at Weathervane. For Firestone High School, he was sound designer for *For Colored Girls Who Have Considered Suicide When the Rainbow Is Enuf* and props designer for *Grease*. He played Sir Andrew in *Twelfth Night* and Henry Homeward in *The Wild Flowering of Chastity*, both for FHS.



Backstage Callboard

SUSIE STECH (Costume Design) was born and raised in Akron and has lived in the same house her entire life. "I've been married for almost 14 years to my husband, Mike, who I met through a dating service. We enjoy camping and eating out and having friends and family over for dinner. I enjoy sewing of all kinds including clothing, home decorating projects and crafty items. One of my all time greatest accomplishments is losing over 100 pounds over the past 3 years. I know now that, if I can do that, I can do anything I set my mind to!"

DERRIC NOLTE (Lighting Design) is a senior at Tallmadge High School and plans to attend Cincinnati's College Conservatory of Music where he will major in Theater Design and Production. Recent credits include *Blackbird* and *Closer* at The Bang and the Clatter Theatre Company, and *Much Ado about Nothing* at Weathervane. "Experience is everything!"

ALISON COOPER (Properties Co-Design) was on the props and light crew for *Much Ado about Nothing* and on the

props crew for *Over the River and through the Woods* and *Lend Me a Tenor*. She has received her GED, enjoys writing, concerts and reading.

JORDAN COOPER (Properties Co-Design) played the role of Don Pedro in *Much Ado about Nothing* earlier this season. He was Props Master for *Over the River and through the Woods* and on the props crew for *Lend Me a Tenor*. He was the Assistant Stage Manager for *Crowns* and played piano in the orchestra for *Joseph*. He works at Borders Books and Music.

KATHRYN A. KOHL (Sound Design) is Weathervane's Assistant Technical Director. See Weathervane's Professional Staff listing for information.

ALAN SCOTT FERRALL (Sound and Scenic Design) is Weathervane's Scenic Designer and Technical Director. He previously designed sound for *The Heidi Chronicles* and *Harvey*. See Weathervane's Professional Staff listing for information.



Thanks
--for the--
Arts

Co-chairs
Lucy Randles and
Virginia Sayre

2006 Weathervane Gala HONORING AKRON MAYOR DON PLUSQUELLIC

in Recognition of His Contribution & Support for the Arts

FRIDAY EVENING, MAY 12, 2006

GREYSTONE HALL
BALLROOM (2ND FLOOR)
103 SOUTH HIGH STREET
DOWNTOWN AKRON
Business Attire ♦ Valet Service

5:30 - 6:30 p.m.	Patron Party	
6:15 - 7:15 p.m.	Silent Auction Browsing	\$125
7:15 p.m.	Dinner	\$175 patron level
8:30 p.m.	Oral Auction	

Tickets may be secured from any theater trustee or from the Weathervane box office.

Download an invitation/reservation form at
weathervaneplayhouse.com.

proceeds benefit Weathervane Playhouse Operating Fund



Aladdin

May 6

11 a.m. & 1:30 p.m.



Kathy Piper & "Aladdin"

This is your last opportunity to see these half life-size marionettes as **Kathy Piper** plans to retire after this season. For 25 years Kathy has constructed all her marionettes, the stage and scenery and written the scripts. She has been named among the Outstanding Young Women in America and her production of *Snow White* received a Citation of Excellence from the Union Internationale de a Marionette. She served four terms as president of the Puppeteers of America, Inc. and her puppets have been featured in gallery exhibitions across the United States. Don't miss this farewell performance of the Piper Puppets!

Weathervane Playhouse is handicapped accessible. Ramps are available to the front doors, auditorium and seating.

Assistive-listening devices for the hearing impaired are available at the Ticket Office.

Large-Type program inserts are available at the Ticket Office. These copies are not full playbills but contain information unique to this production. These inserts are photocopied and are available in limited quantity.

American Sign Language interpretations are scheduled for selected Sunday performances.

Ohio Relay System 1-800-750-0750 TDD. Call to have your ticket order placed.



Production Team Members & Crews

Alan Scott Ferrall -- Technical Director

Kathy Kohl -- Assistant Technical Director

SET CONSTRUCTION

Ruth Richardson ✓ Kristopher Sperry ✓
Tom Marshall ✓ Justyn Jaymes ✓
Erin Katz ✓ Todd Dieringer ✓
Kevin Ford ✓ Patrick Gaffney ✓

LIGHTS

Leah Magnus ✓ -- Master Electrician
Tyler Tannert ✓

COSTUMES

Betty Williams ✓ Henrietta Cook ✓
Dorothy Kies ✓ Karen Burridge ✓

PROPERTIES

Jerry Mirman ✓ M.J. Coulson ✓
Mandy Davis ✓

SOUND

Ryan Durfee ✓ Roger Zema
Brian Jackson ✓ Steve Lawson

ACKNOWLEDGMENTS

Bill Van Nostran -- Publicity Volunteer
Household Appliance

New York photographs by **Alan Scott Ferrall**

Enlargements by **Dan Liddle** and **Image2go.com**

Wedding photographs by **Scott Diëse**

Stephen W. Albro, Kathy McKinsey & J.D. Sidley from the **Cleveland Siught Center**

Thanks to Our Hard-Working Volunteers

The following are the vivacious volunteers who assisted you in many ways including hostessing, house managing and/or staffing the boutique, concession stand and office during *Lend Me a Tenor*.

Lauri Agins	John Cotter	Pat Obenour	Susie Stech
Meena & Puru Agrawal	M.J. Coulson	Barbara O'Connor	Helen Tschantz
Sue Baker	Beverly DeSanzo	John O'Neill	Linda Waite
Nora Barner	Margaret Dietz	Marci Paolucci	Betty Watterson
Patrice Bechtol	Jill Forster	Jean Questel	Betty Williams
Jan Budai	Marilyn Heagerty	Bess Raines	Marta Williger
Karen Burridge	Janet Heilmeier	Ruth Richardson	Mary & Mel Wolfman
Gail Cheslock	Betty Jacobs	Randie & Brian Sass	Gen Woods
Leonard Cheslock	Debra Sharp Katos	Marla Scarpitti	B.J. Zeigler
Henrietta Cook	Leslie & Richard Lund	Lois Simmons	Nancy Zeigler
Wendy & Ralph Cooley	Linda Mateen	Sue & Richard Smith	
Thelma Coss	Lois Murray	Amey Snell	



Next On Our Stage



Musical by Rodgers & Hammerstein

June 14 - July 16

Director Kevin Joseph Kelly

Musical Director Heidi Herczeg

Choreographer Martin Cespedes

The hills of the Merriman Valley come alive with this beloved tale of love against all odds. Maria, who wants to become a nun, is sent to serve as a governess to a widowed naval captain and his seven unruly children. As she wins the hearts of the children, her heart discovers its own budding love.

Attention K-12 Teachers: discount tickets are still available for *The Sound of Music*. Please inquire at the box office for further information. *Discount not available on previously purchased tickets.*



PART TWO: PERESTROIKA
May 18 - June 3, 2006

by Tony Kushner Director: Sean McConaha

This is part two of Kushner's epic play that dissects "the state of the nation." The universal themes of life, love, democracy and personal responsibility play out against the backdrop of the Reagan administration and the spectre of AIDS.



More Coming Events

April 30 -- Salon Reading Series 2:30 p.m. (note time change!) Weathervane presents a new musical by **Kimberly Aldrich-Ceja** titled *Pale Mary*, about a homeless woman who is haunted by her past as she faces an uncertain future with the family she left behind.

May 6 -- *Aladdin* by The Piper Puppets is sponsored by Weathervane's Women's Board and presented on Saturday, May 6 at 11 a.m. and 1:30 p.m. Weekday performances for groups and others are scheduled for Monday through Friday, May 1-5 at 10 a.m. and also at 12:30 p.m. on Friday, May 5.

May 10 -- Dorothy Fuldheim Celebrated -- **Carol Starre-Kmiecik** brings to life the feisty Cleveland TV personality on May 10 at 6:30 p.m., a performance free and open to the public. Starre-Kmiecik discusses Fuldheim's childhood, her growth into lecturing on social issues which led to a stint reading the news on WEWS, Channel 5, the first TV station in Ohio. Fuldheim was engaged to replace a man for 13 weeks and stayed for 37 years. This event is sponsored by Weathervane's Women's Board. A reception follows the program and guests are encouraged to learn about Weathervane and join in theater and Women's Board activities if they wish.

Join us after the show!



New Hours:

Sunday - Thursday 11:00am - 10:00pm

Friday & Saturday 11:00am - 11:00pm

Closed on Mondays

See our ad on page one of this program.

Including Weathervane Playhouse in your philanthropic plans helps us to continue producing theater that enriches our city and can provide you with tax advantages. Call us at 330-836-2626 for more information.

Weathervane Playhouse Staff

Elynmarie Kazle -- Executive Director

Keith D. Campbell

Supervisor, Front-of-House
& Patron Relations

Alan Scott Ferrall

Scenic Designer/Technical Director

Janis L. Harcar

Director of Marketing & Development

Sean McConaha

Dir. of Ed./Producer Youth Prod.

John A. Cotter

Business & Public Relations Assistant

Kathy Kohl

Assistant Technical Director

Caroline Klein

Bookkeeper

Dreajean L. Brown

Data Services Manager

Barbara Trotter

Coordinator of Volunteers

1,928  2006
Coach House Theatre
proudly presents our
2005/2006 Season

proof

by David Auburn
September 8-24, 2005

B R O A D W A Y

B O U N D

by Neil Simon
November 3-19, 2005

*Who's Afraid of
Virginia Woolf?*

by Edward Albee
January 19-February 4, 2006

**PICASSO AT THE
LAPIN AGILE**

by Steve Martin
March 23-April 8, 2006

MURDER ON THE NILE

by Agatha Christie
June 1-24, 2006

330/434-7741

732 West Exchange Street
all titles and dates are subject to change



**Come for the
history and
take away an
experience.**

A Magnificent Historic House Museum and Country Estate

714 North Portage Path • Akron
330-836-5533
www.stanhywet.org

**Stan
Hywet**
HALL & GARDENS



1887

...continues to present the

*"Best of
the Best"*
in 2005-2006

Imani Winds with

Paquito D'Rivera, clarinet

Tuesday, September 27, 2005 • 8 pm

International Sejong Soloists with

Eugenia Zukerman, flute

Tuesday, October 25, 2005 • 8 pm

Olga Kern, piano

Thursday, February 2, 2006 • 8 pm

The Cleveland Orchestra with

Osmo Vänskä, guest conductor

Sunday, February 26, 2006 • 3 pm

Frederica von Stade, mezzo-soprano

& Samuel Ramey, bass

Tuesday, March 28, 2006 • 8 pm

Tokyo String Quartet

Tuesday, May 9, 2006 • 8 pm

All concerts are at E.J. Thomas Hall, The University of Akron; pre-concert talks are held one hour prior to performance time. For more information or a detailed season brochure, call the Tuesday Musical office.

www.tuesdajmusical.org

330-972-2342

**MAGICAL
THEATRE COMPANY**

Professional Theatre for Young Audiences & Families

Treasures await you this season...



Oct. 14 - 23, 2005



**CHRISTMAS
CAROL**

Dec. 2 - 18, 2005



Jan. 27 - 29, 2006



May 12 - 21, 2006

330/848-3708

565 W Tuscarawas Ave • Downtown Barberton

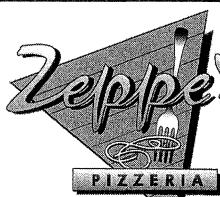
*Weathervane Playhouse
thanks
Tiffany's Bakery
for the beautiful opening
night cakes.*



Wedding Cakes

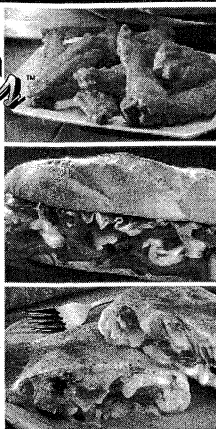
Specializing in Birthday Cakes
330-753-0017
2176 Romig Road
Akron, OH 44320

**PIZZA PASTA SUBS SALADS
WINGS CALZONES**



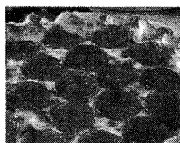
**PASSIONATE
ABOUT PIZZA™**

Best wishes on your
2005 season
Zepp's Pizzeria in The Valley
1676 Merriman Road
(330) 836-6000



X-LARGE PIZZA

\$9.99



X-Large 12-cut
Traditional Pizza
with 1 Topping



CODE WP100 Not valid with any other offer. This coupon is available
for pick-up or delivery at The Valley location only. Limited time only.

**Supporting inspirational performances
delivered by exceptional people.**

www.brunercox.com



At Bruner-Cox LLP, we believe the expertise,
integrity and continuity of our people
allow us to deliver innovative accounting
and consulting solutions to every client
relationship.

Experience the value of our people.

BRUNER-COX LLP

Business Consultants & Certified Public Accountants

Our people. Your solution.

AKRON & CANTON

An independently-owned member of the RSM McGladrey Network



Greystone Hall & Catering

A fine dining experience for any event

Featuring the Captain's Lunch Tues. - Fri. 11:30 - 1:30 p.m.

103 S. High Street

Downtown Akron

330-761-1950



Daily Delivery to Hudson and Surrounding Area
European/Holland & Tropical fresh Cuts brought in Daily
Gourmet Fruit Baskets, Goodie Baskets, Balloon Bouquets
Custom Dried & Silk Arrangements for Home & Office
Blooming Garden Baskets, Green Plants, Plush Animals

Monday - Saturday 9 - 7 • Sunday Noon - 6

330.650.1366 or 330.656.3676 or

800.795.1366

12 Clinton St. • Hudson • At First & Main

www.thegreenhouseflorist.com

Gregg Lauck, Proprietor

**at Stinaff's
the spotlight
is on**



Stinaff's
PRINTING FOR BUSINESS SINCE 1935

44 S. Summit St. • Akron, OH 44308
330-434-2106 • Fax 330-434-9376

open daily all year



encore!

*some
performances
simply demand
applause*

Donzell's

Greenhouses • Nursery • Garden Center • Landscape • Floral • Seasonal Design
937 East Waterloo Rd • Akron • Ohio • 330.724.0505



LaComini's
SINCE 1932

Dinner before or after the show.

Minutes from

Weathervane Playhouse
Restaurant - Deli - Wine Shoppe
Banquets - Catering

1561 Akron-Peninsula Road

(330) 923-7999



Volunteering at Weathervane

Weathervane began as a volunteer organization and continues its growth thanks to the time and talent that members of our community invest in it. Our on-stage performers have worked long and hard to earn your applause. But their work is supported by many other unseen men and women who've helped build and paint sets, run the lights and sound, make sure that properties and set dressing items are in their proper places and do other backstage labor from stage managing to costuming and make-up. Supporting those who are actively involved in putting on each show are still more volunteers who usher, house manage, sell tickets, keep our office running and serve on our Board of Trustees, Board committees, Production Board and Women's Board.

Their spirit is the backbone of our continuing operations, a valued support on which our professional staff relies.

Each month, we acknowledge the outstanding Volunteers of the Month in our lobby, but those volunteers represent all who commit their time and interest to create a great theater experience for everyone who's come to see this show.

If you have friends or relatives who volunteer generously at Weathervane, we hope you'll take a moment to thank them for their help and their support of the cultural enrichment of our community. Better yet, join them! Call us and we'll help you win your own share of the applause for a "jolly good show," an experience that offers unique challenges with every performance.

Share the Annual Chanticleer Celebration

Let's talk Chanticleer! Shortly after the final production of each season (August 19, 2006), Weathervane volunteers, subscribers and friends share an exciting awards banquet and party to acknowledge outstanding performances by performers and technical volunteers. And, if you have seen all of the six main-stage productions, you are eligible to be a judge!

The top performers are awarded rooster statuettes -- Chanticleers -- in recognition of their work, as voted by Chanticleer "judges." It's a great night to get together, share hopes, fun and festivities and is open to all.

Awards are presented for outstanding lead performances by a male or female in a drama or comedy, outstanding support performances, and outstanding lead and support in a musical, as well as choices in technical achievement. Chanticleers are also awarded for properties, lights, costumes and sound design, plus best production of the season. In addition to performance and production awards, the event also recognizes the Top 25 outstanding volunteers of the season. We welcome you to take part in the biggest nail-biting party of the year. Make sure to pick up your ballot at the end of the season and join us!



Supporting Our Community Through
Education, Research, Service.

www.neoucom.edu



Volunteer Responsibilities

Here's a quick introduction to the responsibilities volunteers undertake to make our shows work. If you'd like to try your hand at any of these jobs, please call us. We'll help you learn! Volunteers with 100 hours or more of service are eligible for a special Weathervane membership!

*** Stage Management** Duties include assisting the director throughout the rehearsal period, calling cues, keeping backstage safe and orderly, and coordinating the technical needs of the show with the actors. A great opportunity for those who enjoy planning, communicating and taking charge. Once the director's work is done, it's the Stage Manager who runs each performance.

*** Set Construction** Use your building skills, carpentry or painting techniques to help make illusion come to life. Help is needed days and evenings.

*** Costumes** Designers and workers are vital. We invite skilled and unskilled seamstresses to make or alter costumes, create patterns, care for costumes during a show and keep our wardrobe department organized.

*** Lighting** Experience is a plus, but you can learn by assisting others who know computers and electrical requirements. We'll train eager volunteers to help hang, focus and add color to lighting instruments. We'll also teach you how to run the light board and follow spots. *Nobody can see the show without you.*

*** Sound** Create the music and sound effects tapes that enrich the aural envi-

ronment for each show or add "live" backstage sound. Run the sound system for technical rehearsals and productions.

*** Properties** All the items that help "dress" a set and all those used by actors in rehearsal and performance (from tea sandwiches to "deadly" weapons and "shattering" windowpanes) must be borrowed, built or cooked. Many volunteers are needed to work on each performance.

*** Office Volunteer** If you enjoy dealing with the public, we can use your help during office hours and on show nights to assist in taking money and answering the phone to take reservations. You may also help with mailings, work with staff, and greet customers and visitors.

*** Ushering** Welcome audience members with your smile, show them to their seats, pass out programs, and serve refreshments at intermission. Your help is always welcome.

*** House Manager** This representative greets the audience, tears tickets and guides theater-goers to ushers for seating. You'll work with the stage manager to coordinate the timing of intermissions and remain in the lobby throughout the show to handle any emergency.

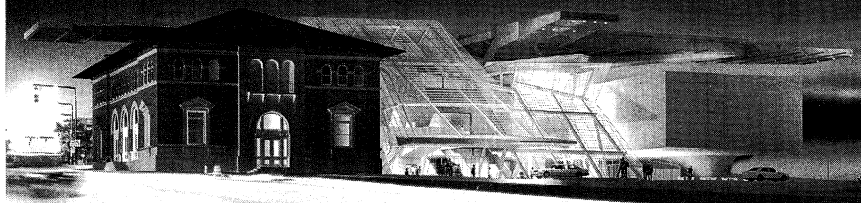
Weathervane Community Playhouse

is a proud member of



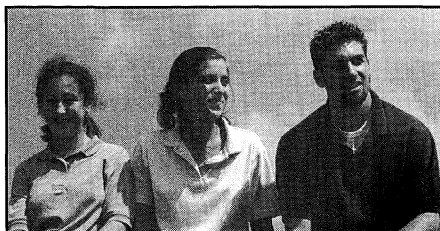
Ohio
Community
Theatre
Association

The New Akron Art Museum



Coming Soon **Akron
Art
Museum**

330. 376. 9185
www.akronartmuseum.org



Lawrence School students come from
over 9 counties and 60 communities...
including yours.

*Lawrence School is a college
preparatory day school serving
bright students in Grades 1-12
with learning disabilities
and attention deficits*



LAWRENCE SCHOOL

1551 E. Wallings Road in Broadview Heights
www.lawrenceschool.org 440-526-0717

COMING 2007: Lawrence Upper School
(grades 7-12) moves to Sagamore Hills



Luigi's

"An Akron Tradition
Since 1949"

- Award Winning Food
- Casual Dining
- Old World Elegance

Featuring Our Famous
Homemade

- Pizza
- Lasagna
- Antipasto

OPEN 7 DAYS
105 N. MAIN ST.
330-253-2999

Vacations Made Easy!

Looking to get away from it all?
AAA Travel has a variety of
romantic cruises and an
endless selection of trips to
exotic destinations around the
world! No matter the occasion,
we'll find a vacation package
that fits your every need. And
if you have a question, we're
just a phone call away.
Give AAA Travel a call today,
or look us up on the web at
www.aaa.com!



Akron Auto Club

Travel With Someone You Trust.®

Downtown
330.762.0631

Hudson/Hudson Plaza
330.650.6727

Fairlawn Town Centre
330.867.0694

Cuyahoga Falls
330.923.4826

Ellet/Eastgate Plaza
330.798.0166



www.aaa.com



Who Gets On Stage?

Our volunteer performers come from throughout greater Akron and northeastern Ohio. They've committed themselves to four or more weeks of rehearsals plus performances. Their greatest reward is your applause.

Many performers come with substantial theatrical experience. Others are new to the stage. Auditions are open to all and our non-traditional casting policy opens the way for many performance opportunities. Except in cases where race, gender, age or disability is essential to the play, all roles are cast on the basis of talent.

Local newspapers carry audition dates and times or call Weathervane at 330-836-2626 to be added to the audition mailing list. Some directors prefer to set appointments for audition times and may ask that you come prepared with a brief

monologue, improvisational subject or musical number. Copies of plays scheduled or audition scenes are often available for a nominal deposit.

When you arrive at the theater on audition nights, you'll learn about the rehearsal and performance schedule. You may also register as a production volunteer if you're interested in learning about the technical opportunities in the show.

You may be asked to return for callbacks and will be notified of the director's cast selection as soon as possible. Please note that if you don't win the role you've wanted so badly, it may not necessarily reflect on your talent. The director's choice of cast members must take many factors into account to develop the proper "relationships," style and reality of the ensemble. Don't be discouraged.

Beware of the Dreaded No-Show

Have you ever seen empty seats at a sold out sporting event or concert? Weathervane has the same problem. Subscribers who may have exchanged from another performance wonder why they weren't given those prime empty seats for the evening.

When you buy a subscription, you are promising to come to the theater for that ticketed performance and we hold your seat(s). This makes it impossible to tell if a performance is ever really sold out and annoys other ticket buyers who see that they could have been seated in a better spot.

Subscribers: Please call the Ticket Office at 836-2626 if you will not make your ticketed performance. Thank you.

Weathervane Traditions

Meet the cast Many cast members spend a few minutes in the lobby area to meet and greet friends after performances. It's your chance to thank them for their performance.

Intermission Tea is served with our compliments by our volunteers. Soft drinks are available at a nominal cost.

Opening Night Receptions welcome audiences on Main Stage first Friday performances. We provide light refreshments after the show so you can share in the celebration.

For your sweet tooth snacks are available for purchase before the show and during intermission. Refreshments (other than water) are not permitted in the auditorium.



Theatre Education

Youth Education

Weathervane offers professionally taught classes in acting, stagecraft, musical theatre and improvisation for children up to age 18. Fall and spring classes are held on Saturdays and two-week Hands on Theatre (H.O.T.) workshops are planned throughout the summer. The cost is minimal with a limited number of scholarships available and discounted fees for Weathervane members.

Children may also audition for roles in many productions. Casting is not dependent upon class enrollment. Participation is an extension of valuable training in every facet of production from the audition process to technical and performance experience. Family members may also have learning opportunities by participating in such productions.

Weathervane works with area schools by providing outreach information and study guides as part of our Project STAGE© program, which brings public and private school students to see as many as five productions each season. This season, *Much Ado about Nothing*, *Crowns*

and *Antigone* will be featured in the Project STAGE© events. Tickets are \$8.

For information about classes or audition schedules for Youth Productions, please call our Director of Education at 330-836-2323.

Adult Classes

Professionally taught adult theatre classes have included classical drama, improvisation, scenic design, stage lighting and directing. These classes help actors expand their performance and public speaking skills. Look for new schedules for classes periodically.

Learning On the Job

Every production participant becomes part of Weathervane's continuing education process. You'll learn from more experienced volunteers who share the creation of production and performance. If you don't have time for structured classes, sign on to become a crew member or performer. We'll help you expand your knowledge of backstage and onstage responsibilities.



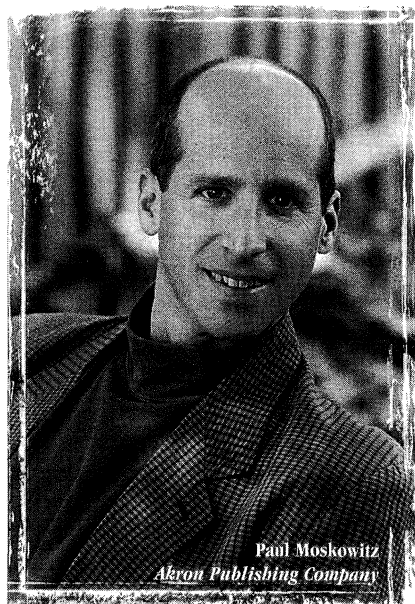
The Pathway to Quality Education

Preschool through Grade Eight

2315 Ira Road in Bath, Ohio near Hale Farm 330-666-1118 Visit our Web site at www.oldtrail.org



Why is this man smiling?



Because his customers are too.

If you haven't been smiling lately, please call Akron Publishing Company for your next graphic design or custom publishing project. We design and produce advertising, brochures, direct mail pieces, customized magazines, catalogs, books and more. Give us a try ... you'll be *happy* you did.

AKRON
PUBLISHING COMPANY

phone: 330.929.2703 ▲ fax: 330.923.0856

www.akronpublishing.com
www.everythingakron.com

A really good custom publishing and graphic design firm.

**The perfect blend of skill,
talent and collaboration.**



At KeyBank, we're proud to support the Weathervane Playhouse in it's display of skill and talent. And we're proud to pool our skills to bring you financial services that support your talents.

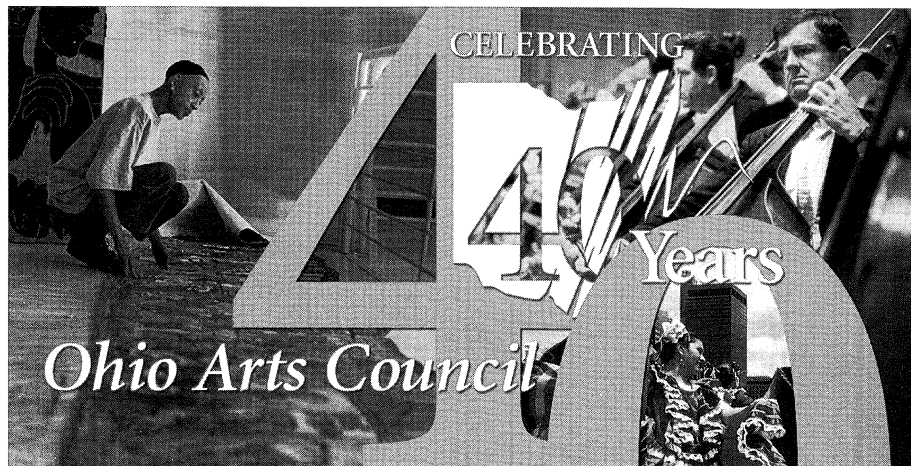
KeyBank

1.800.KEY2YOU®

Key.com

Achieve anything.

Key.com is a service mark of KeyCorp.



CELEBRATING

40 Years

Ohio Arts Council

1965 - 2005

40 Years of Strengthening Ohio Communities
Culturally, Educationally and Economically.

727 East Main Street
Columbus, OH 43205-1796
614/466-2613
www.oac.state.oh.us

Be in the know by visiting

ArtsinOhio.com

For thousands of performances and events,
festivals and exhibitions that are sure to move
you, visit ArtsinOhio.com—an easy to use
website that allows you to search by location,
interests, dates and more.

Have Your Wedding on

BROADWAY

WEDDING RECEPTIONS

Starting at ***\$25.00** pp+

*Price does not include Bar service,
tax or service charge. Prices subject to
change.

**HOTEL
ACCOMMODATIONS**

CROWNE PLAZA
HOTELS • RESORTS

QUAKER STATION

HISTORIC QUAKER SQUARE • DOWNTOWN AKRON
135 SOUTH BROADWAY • AKRON, OHIO 44308
(330) 253-5970 • www.quakersquare.com

Quaker Station

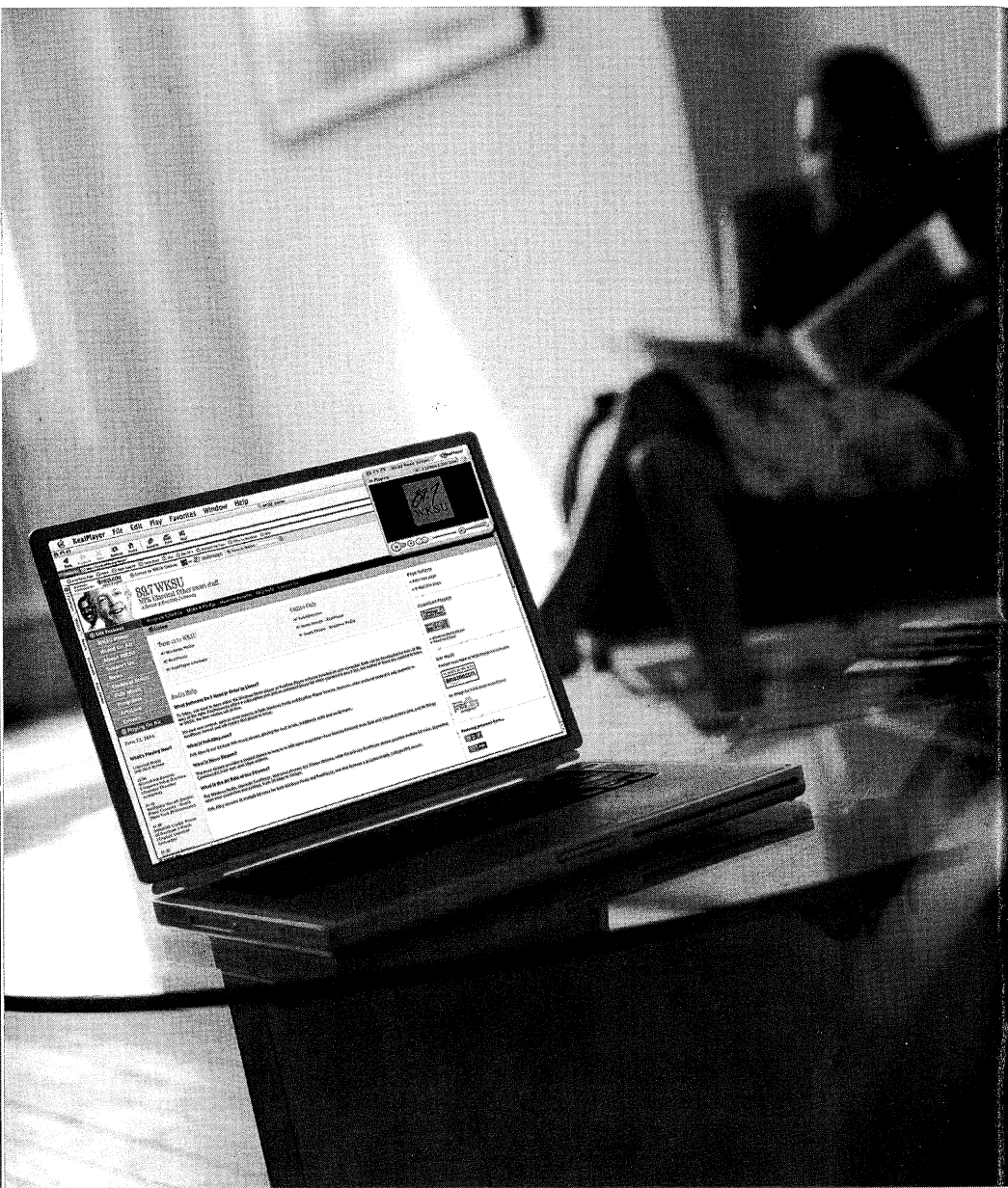
Grand
IDEAS

MINX DESIGN

330.762.4126 • 1.888.GET.MINX

Fresh Solutions for Print Communication

Norwalk, Ohio. 2:13 p.m. *Michelle Vocaire listens to classical music.*



NPR. Classical. Other smart stuff. 89.7 WKSU

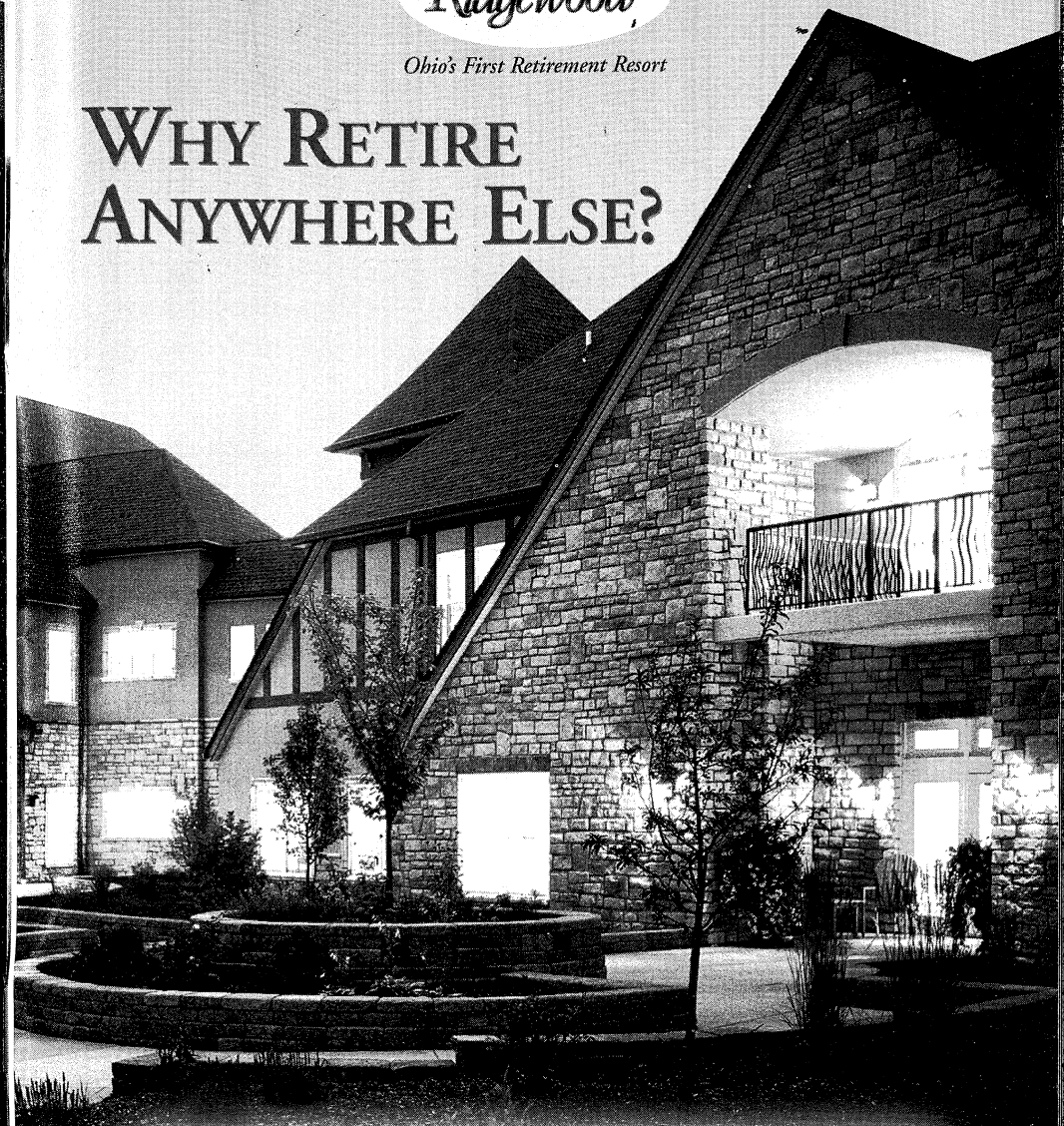
A Service of Kent State University

Akron, Ohio

SUMNER ON
Ridgewood

Ohio's First Retirement Resort

WHY RETIRE ANYWHERE ELSE?



Good News! You no longer need to move to Florida or Arizona to enjoy a great retirement lifestyle! Sumner on Ridgewood, in Copley Township, has recently been certified as Ohio's first *Retirement Resort* - in recognition of the active retirement amenities (like indoor swimming pool & fitness center) and supportive healthcare services, all beautifully situated on a 64-acre campus. Bring a friend and let us treat you to a free luncheon and a grand tour - a free 2-hour "vacation" for you to enjoy!

Call today to reserve your spot at an upcoming Taste & Tour of Sumner on Ridgewood.

330-664-1283 (Ref. #510L)

