

The perfect blend of skill,
talent and collaboration.



At KeyBank, we're proud to support the the Weathervane Playhouse in it's display of skill and talent. And we're proud to pool our skills to bring you financial services that support your talents.



1.800.KEY2YOU®
Key.com

Achieve anything.

Key.com is a service mark of KeyCorp.

Drew Bruce
WEATHERVANE COMMUNITY PLAYHOUSE
Natalee MacGregor
Where Theater Comes Alive!

2003-2004
Sixty-Ninth Season



the crucible

By Arthur Miller

A YOUTH/FAMILY PRODUCTION

February 14 - 28, 2004

Give yourself a hand!

For supporting the arts in Northeast Ohio

If not for you,
these performers would be playing
to an empty house.

The arts serve many millions of people every year, contribute well over a billion dollars to the economy, and employ hundreds of thousands of creative and technical workers. Approximately a thousand people are employed in the arts in Akron alone!

Consider the benefits of involvement in the arts: Those involved in music training or music appreciation score higher in verbal and math tests, and training in music contributes to self-satisfaction and success in later life. Theater, music, dance, and visual arts programs can act to connect diverse segments of a community by providing education and encouraging dialogue, thus promoting understanding. People exposed to the arts throughout their lives read more, perform more community service, and vote more often than those who do not participate in the arts.

Thank you for supporting the arts. Thank you for helping to make your community a better place to live.



Audio-Technica U.S., Inc., Stow, Ohio
Audio and video products for home and professional use.
www.audio-technica.com

Copyright ©2003 Audio-Technica U.S., Inc. and its licensors. All rights reserved.



THE HAGEN ROWLAND GROUP
FINANCIAL CONSULTANTS

*Producing financial
performance, professional
and personal.*

BRUCE ROWLAND
INVESTMENTS • INSURANCE

330.836.9245

Fax: 330.836.6114

E-Mail: browland@ameritech.net

Securities Offered Through:
WRP INVESTMENTS, INC.
MEMBER: NASD, SIPC



Weathervane Community Playhouse

1301 Weathervane Lane, Akron, OH 44313-5186

330-836-2626 ♦ Fax 300-873-2150 ♦ wcpakron@aol.com ♦ www.weathervaneplayhouse.com

Charlie and the Chocolate Factory

by Richard R. George, Novel by Roald Dahl

July 26 - Aug. 10, 2003 (*YT)

My Way

A Musical Tribute to Frank Sinatra

Compiled by David Grapes and Todd Olson

September 10 - October 5, 2003

Proof

by David Auburn

October 15 - November 2, 2003

Joseph

and the Amazing Technicolor Dreamcoat

by Tim Rice and Andrew Lloyd Webber

Nov. 22 - Dec. 21, 2003 (*YT)

The Mystery of Irma Vep

by Charles Ludlam

January 14 - February 1, 2004

The Crucible

by Arthur Miller

February 14 - 28, 2004 (*YT)

A Lesson Before Dying

by Romulus Linney, Novel by Ernest Gaines

March 10 - 28, 2004

The Dinner Party

by Neil Simon

April 14 - May 9, 2004

Pinocchio

Performed by the Piper Puppets
presented by WCP Women's Board

May 8, 2004 (*YT)

Nunsense

by Dan Goggin

June 9 - July 3, 2004

*Youth/Family Production

Patron Information

* **Emergency Exits** located at the left front of the auditorium and left side of the lobby. Front door and lobby doors will also be used.

* **Restrooms** Located in lobby alcove - wheelchair accessible.

* **Handicapped Services** Seating for a limited number of wheelchairs. Please notify in advance if needed.

* **Assistive Listening Devices** Available thanks to the generosity of Virginia and J. Robert Wilson.

* **Patrons:** Expecting a call? Leave name and seat number with the House Manager. *Please turn off your cell phones, pagers and audible watches.*

* **Beverages and Food** may not be taken into the auditorium during performances.

* **Use of Cameras and Recording Devices** is prohibited during performances.

* **Curtain time** Wed./Thurs. - 7:30 p.m., Fri./Sat. - 8 p.m. and Sun. - 2:30 p.m.

* **Latecomers** will be seated at the rear of the auditorium during a suitable break in the play if space is available and may take their reserved seats after intermission.

* **Exiting the Theater** Please remain seated until the auditorium lights are on. Parking lot illumination assures that getting to your car will be easy and secure.

* **Smoking** is permitted outside the building.

* **Lost and Found** items will be held at the Ticket Office until claimed.

* **Comments** from audience members are always welcomed with interest. Please feel free to write to Weathervane to express your views and opinions about our productions. Send your comments to: *Executive Director, Weathervane Community Playhouse.*



Weathervane appreciates the continuing strong support of individuals, corporations, foundations and other donors who help finance the theater's operations, capital improvements and endowment program. Weathervane is classified as a 501(c)(3) organization and contributions are tax deductible. Following are some of the many ways in which you can take pride in your support of the art of theater in our community.

* **Become a Weathervane Member**

Your annual support makes you a voting member of Weathervane Community Playhouse. You'll receive discounts on educational programs and other benefits, based on the membership level you choose. Members are invited to Weathervane's annual meeting and to other special events. Memberships are renewable annually, beginning at \$75 (Contributing), and continuing at Sustaining, Patron, Silver, Gold, Platinum and Diamond Levels. Membership is actively solicited in the fall but is accepted at any time. Members are recognized in the Playbill.

* **Give a Special Gift To Say You Care**

Special donations may be made at any time to memorialize a friend or relative whose interest in Weathervane was significant to his or her life. You may also recognize and celebrate important dates or current achievements of relatives, friends or associates.

* **Remember Weathervane in Your Will**

What better way to carry on your tradition of support to Weathervane than by a planned gift. By taking advantage of the tax laws which encourage charitable giving, the U.S. Government will share in the cost of your gift to Weathervane. Your gift can fulfill a specific purpose or project while providing your estate with tax savings. To help ensure that Weathervane will continue, please contact our Executive Director for more information.

* **Check For Matching Gifts** Many national and local corporations will

match your donations to Weathervane, increasing your generosity to the theater. Please check whether or not your company participates in such a program.

* **Designate Gifts To Local Foundations**

Several of this area's larger foundations accept memorial and tribute gifts in the name of specific organizations such as Weathervane Community Playhouse. Such gifts help assure continuing grants to the theater's operations and special projects. We are enormously grateful for the impressive history of foundation support in this community.

* **Sponsor or Underwrite a Production**

Our productions may be underwritten by local corporations or foundations. Benefits can include private "command performances" and special receptions for employees and friends when your business chooses this important method of support. Please call 330-836-2626. We'd like to discuss this kind of opportunity with you.

* **Capital Project** The construction segment of the Capital Project included a scene shop with basement storage, a 2nd-floor classroom and rehearsal hall, soundproof production booth, elevator and fly gallery pocket above the stage and installation of the rigging system for the fly gallery. Donations for Stage Two of the project continue to purchase classroom furnishings, update the lighting system, renovate the lobby and replenish the Capital Fund for maintenance and repairs.



Weatherlane Community Playhouse

1301 Weatherlane Lane, Akron, OH 44313-5186

330-836-2626 ♦ Fax 300-873-2150 ♦ wcpakron@aol.com ♦ www.weatherlaneplayhouse.com

Charlie and the Chocolate Factory

by Richard R. George, Novel by Roald Dahl

July 26 - Aug. 10, 2003 (*YT)

My Way

A Musical Tribute to Frank Sinatra

Compiled by David Grapes and Todd Olson

September 10 - October 5, 2003

Proof

by David Auburn

October 15 - November 2, 2003

Joseph

and the Amazing Technicolor Dreamcoat

by Tim Rice and Andrew Lloyd Webber

Nov. 22 - Dec. 21, 2003 (*YT)

The Mystery of Irma Vep

by Charles Ludlam

January 14 - February 1, 2004

The Crucible

by Arthur Miller

February 14 - 28, 2004 (*YT)

A Lesson Before Dying

by Romulus Linney, Novel by Ernest Gaines

March 10 - 28, 2004

The Dinner Party

by Neil Simon

April 14 - May 9, 2004

Pinocchio

Performed by the Piper Puppets
presented by WCP Women's Board

May 8, 2004 (*YT)

Nunsense

by Dan Goggin

June 9 - July 3, 2004

*Youth/Family Production

Patron Information

* **Emergency Exits** located at the left front of the auditorium and left side of the lobby. Front door and lobby doors will also be used.

* **Restrooms** Located in lobby alcove - wheelchair accessible.

* **Handicapped Services** Seating for a limited number of wheelchairs. Please notify in advance if needed.

* **Assistive Listening Devices** Available thanks to the generosity of Virginia and J. Robert Wilson.

* **Patrons:** Expecting a call? Leave name and seat number with the House Manager. *Please turn off your cell phones, pagers and audible watches.*

* **Beverages and Food** may not be taken into the auditorium during performances.

* **Use of Cameras and Recording Devices** is prohibited during performances.

* **Curtain time** Wed./Thurs. - 7:30 p.m., Fri./Sat. - 8 p.m. and Sun. - 2:30 p.m.

* **Latecomers** will be seated at the rear of the auditorium during a suitable break in the play if space is available and may take their reserved seats after intermission.

* **Exiting the Theater** Please remain seated until the auditorium lights are on. Parking lot illumination assures that getting to your car will be easy and secure.

* **Smoking** is permitted outside the building.

* **Lost and Found** items will be held at the Ticket Office until claimed.

* **Comments** from audience members are always welcomed with interest. Please feel free to write to Weatherlane to express your views and opinions about our productions. Send your comments to: *Executive Director, Weatherlane Community Playhouse.*



Weatherlane appreciates the continuing strong support of individuals, corporations, foundations and other donors who help finance the theater's operations, capital improvements and endowment program. Weatherlane is classified as a 501(c)(3) organization and contributions are tax deductible. Following are some of the many ways in which you can take pride in your support of the art of theater in our community.

* **Become a Weatherlane Member**

Your annual support makes you a voting member of Weatherlane Community Playhouse. You'll receive discounts on educational programs and other benefits, based on the membership level you choose. Members are invited to Weatherlane's annual meeting and to other special events. Memberships are renewable annually, beginning at \$75 (Contributing), and continuing at Sustaining, Patron, Silver, Gold, Platinum and Diamond Levels. Membership is actively solicited in the fall but is accepted at any time. Members are recognized in the Playbill.

* **Give a Special Gift To Say You Care**

Special donations may be made at any time to memorialize a friend or relative whose interest in Weatherlane was significant to his or her life. You may also recognize and celebrate important dates or current achievements of relatives, friends or associates.

* **Remember Weatherlane in Your Will**

What better way to carry on your tradition of support to Weatherlane than by a planned gift. By taking advantage of the tax laws which encourage charitable giving, the U.S. Government will share in the cost of your gift to Weatherlane. Your gift can fulfill a specific purpose or project while providing your estate with tax savings. To help ensure that Weatherlane will continue, please contact our Executive Director for more information.

* **Check For Matching Gifts** Many national and local corporations will

match your donations to Weatherlane, increasing your generosity to the theater. Please check whether or not your company participates in such a program.

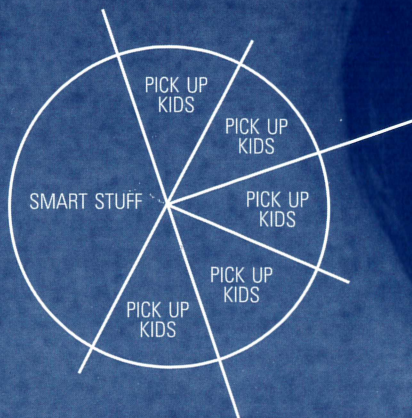
* **Designate Gifts To Local Foundations**

Several of this area's larger foundations accept memorial and tribute gifts in the name of specific organizations such as Weatherlane Community Playhouse. Such gifts help assure continuing grants to the theater's operations and special projects. We are enormously grateful for the impressive history of foundation support in this community.

* **Sponsor or Underwrite a Production**

Our productions may be underwritten by local corporations or foundations. Benefits can include private "command performances" and special receptions for employees and friends when your business chooses this important method of support. Please call 330-836-2626. We'd like to discuss this kind of opportunity with you.

* **Capital Project** The construction segment of the Capital Project included a scene shop with basement storage, a 2nd-floor classroom and rehearsal hall, soundproof production booth, elevator and fly gallery pocket above the stage and installation of the rigging system for the fly gallery. Donations for Stage Two of the project continue to purchase classroom furnishings, update the lighting system, renovate the lobby and replenish the Capital Fund for maintenance and repairs.



NPR. Classical.
Other smart stuff.
89.7 WKSU

A Service of Kent State University

Akron-Canton's
only
television
newscast
is here!

Watch Your
Newscast
Weeknights
at 6:30

Proud sponsor of
Weathervane
Community Playhouse

PAX23
news
UGA2
bX53



ERIC MANSFIELD
anchors Akron-Canton news



MARK NOLAN
forecasts Akron-Canton weather



JIM DONOVAN
covers Akron-Canton sports



History *From the Barn to the Valley*



From 1935 until 1951, Weathervane was housed in a modest carriage house barn on Marshall Avenue. Some recall its cramped quarters but especially the energy and devotion of four ladies, Grace Hower Crawford, Laurine Schwan, Helen Troesch and Muriel MacLachlan, who believed that Akron deserved the best in theater and that volunteers could make it happen. A lobby plaque lists the names of other founders who shared their commitment. The rooftop weathervane gave the theater its name and logotype character, the Chanticleer.

In 1951, the organization renovated a building on Copley Road and, from 1960 - 1992, Bob Belfance served as director. Along with custodian/ticket office manag-

er, Nora Scott, the two-person staff relied on volunteer support. Paid guest directors and children's theater instructors served in part-time positions. Ticket receipts and donations helped meet expenses and created a modest endowment. A fund-raising drive resulted in construction of the present 263-seat facility which opened in 1970. Thanks to Grace Crawford's legacy, the mortgage has been paid off.

Construction made possible by the most recent Capital Campaign added classrooms, rehearsal space, scene shop, additional prop storage, elevator, library, fly gallery and fly system, a sound-proof production booth and a costume workshop.

Weathervane celebrated its 500th Mainstage production, *The Laramie Project*, during the 2002-2003 season. Thanks for being a part of our history.



Theater Education

Youth Education

Weathervane offers professionally taught classes in acting, stagecraft, musical theatre and improvisation for children up to age 18. Fall and spring classes are held on Saturdays and two-week **Hands on Theater (H.O.T.)** workshops are planned throughout the summer. The cost is minimal with a limited number of scholarships available and discounted fees for Weathervane members.

Children may also audition for roles in many productions. Casting is not dependent upon class enrollment. Participation is an extension of valuable training in every facet of production from the audition process to technical and performance experience. Family members may also have learning opportunities by participating in such productions.

Weathervane works with area schools by providing outreach information and study guides as part of our **Project STAGE** program, which brings public and private school students to see as many as five productions each season. This season, *Proof*, *The Crucible* and *A Lesson*

Before Dying will be featured in the **Project STAGE** events. Tickets are only \$8.

For information about classes or audition schedules for Youth Productions, please call our Education Coordinator at 330-836-2323.

Adult Classes

Professionally taught Adult Theatre classes include Classical Drama, Improvisation, Scenic Design, Stage Lighting and Directing. These classes help actors expand their performance and public speaking skills.

Learning On the Job

Every production participant becomes part of Weathervane's continuing education process. You'll learn from more experienced volunteers who share the creation of production and performance. If you don't have time for structured classes, sign on to become a crew member or performer. We'll help you expand your knowledge of backstage and onstage responsibilities.



Reserve: A Great Place to Be ... an exceptional place to learn

WESTERN RESERVE ACADEMY

Open House
Saturday,
Nov. 8, 2003 &
April 24, 2004

Visit classes, tour the campus and meet faculty and students. Families and prospective students of all ages welcome.

Check in between
8:45 a.m. and 11:00 a.m.
John D. Ong Library
College Street Entrance



Featured in U.S. News
& World Report

For further information: Visit Reserve
at www.wra.net or call 330.650.9717

WESTERN RESERVE ACADEMY
Hudson, Ohio 44236 • Day and Boarding 9-12



The Pathway to Quality Education

Preschool through Grade Eight

2315 Ira Road in Bath, Ohio near Hale Farm 330-666-1118 Visit our Web site at www.oldtrail.org





Generations of Giving.

The McDowell family's generosity and vision has transcended generations, establishing a permanent and living legacy for The University of Akron.

*From left to right:
Peggy McDowell Lloyd, C. Blake McDowell, III,
Beatrice McDowell (with her cat, Tammy),
Philip A. Lloyd, '72*

You can create an enduring legacy through a bequest to The University of Akron.

A gift through your Will or Trust helps students and provides lasting recognition for your family for generations.

To structure a charitable bequest that ensures the greatest tax results for your estate and celebrates your support of The University of Akron, please call:

David P. Horn
Director of Planned Giving
The University of Akron
330-972-6870
or e-mail: dhorn@uakron.edu

The University of Akron

The University of Akron is an Equal Education and Employment Institution.

THE POWER OF



FIRSTENERGY RECOGNIZES THE POWER OF THE ARTS AND ITS ABILITY TO ENHANCE THE QUALITY OF LIFE FOR EVERYONE IN OUR COMMUNITY.

WE'RE PROUD TO HELP SUPPORT PERFORMANCES THAT ENRICH US ALL.

FirstEnergy

2635

Ohio Arts Council

Building Ohio Through the Arts

Supporting organizations with state tax dollars to encourage economic growth, educational excellence and cultural enrichment.



Share the Arts

Ohio Arts Council
727 East Main Street
Columbus OH
43205-1796
614/466-2613
www.oac.state.oh.us

Visit today.

ArtsinOhio.com

Find what, when and where arts and cultural events are happening in Ohio...instantly! Just search the Event Finder by whatever criteria are most important to you.



Ticket Information

*** Tickets** Purchase in person or charge by phone with Visa, MasterCard or Discover at 330-836-2626, Tuesdays through Fridays 10 a.m. to 5:30 p.m. and on performance Saturdays from 11:30 a.m. to 5:30 p.m. *Reservations are also required when using coupons from your Weathervane Super Coupon Book, complimentary tickets or coupons offered from any other cooperating arts organization.* Please arrive 20 minutes before curtain time to pick up your tickets. Unclaimed tickets will be released for sale five minutes prior to curtain at the discretion of the Box Office Manager and volunteers.

*** Special seating** Please inform us if you have seating preferences due to visual, auditory or other physical needs. Please remember orders are filled on a first-come, first-served basis with season subscribers and advanced group sales taking first priority.

*** Season Subscriber Exchanges** must be phoned in at least 24 hours prior to

your originally scheduled performance. We can't always guarantee the same seats but we'll give you the closest available replacements. An upgrade fee applies when changing from a Preview Night. *If you cannot use your subscription seats, please call us at least 24 hours in advance to release them. We will recognize this as a donation.*

*** Student Rush Tickets** go on sale 30 minutes before curtain time. Students with a valid ID may purchase any remaining tickets for half price. Rush tickets cannot be reserved in advance.

*** Discounted Group Reservations** are available for groups of 15 or more. Call Weathervane at 330-836-2626 to learn how you can entertain friends, associates, or clients with a night at the theater or to plan a fund-raising event for larger groups.

*** Gift Certificates** are available at any time in any amount you choose.

*** Recycle your playbills** Anyone who doesn't wish to keep the playbill may drop it in our recycling box.

Money-saving super coupon books are available all season.

Super Coupon Books

Help You Save!

Where Theater Comes Alive!

Booklets contain eight coupons and serve as pre-paid admissions for main-stage series productions. Use them one-at-a-time or all at once!



WEST SIDE VOCAL ACADEMY

Professional Teachers — Professional Results

Voice — Acting

Ron Hazelett

Bass

330-864-0660

Susan Wallin

Soprano

Charting new paths towards the future of the Arts.

Look smart. Be smart.



Turning heads through smart design

MINX DESIGN

330.762.4126 • 1.888.GET.MINX

*The tradition continues...
distinctive retirement living*

The Merriman



The Merriman, our inaugural season, 2003 – 2004

For 52 years our home has provided a place for area seniors to receive loving care. With our commitment to preserving this tradition comes our ongoing promise to residents, families, staff, and the community that The Merriman will provide exceptional care and distinctive retirement living.

Now accepting reservations for gracious accommodations:

- Nursing Care
- Memory Care
- Gourmet Dining
- Restorative Care
- Assisted Living
- Senior Day Activities
- Wellness Programs
- Physical Therapy

For a personal tour of our distinctive residence, contact Barb Mullin at (330) 762-9341.

The Merriman, 209 Merriman Road, Akron Ohio 44303

**Supporting inspirational performances
delivered by exceptional people.**

www.brunercox.com



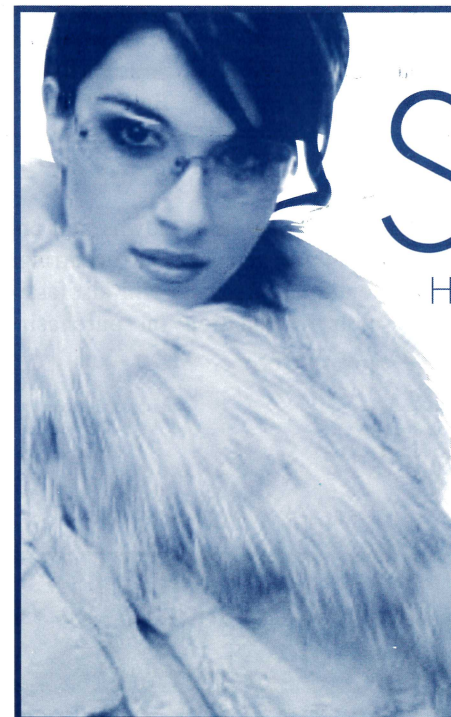
At Bruner-Cox LLP, we believe the expertise, integrity and continuity of our people allow us to deliver innovative accounting and consulting solutions to every client relationship.

Experience the value of our people.

BRUNER-COX LLP

Business Consultants & Certified Public Accountants

Our people. Your solutions.



SEXY

High fashion furs at a price
that will turn you on.



104 Summit Mall
Mon/Thu 10am-8pm • Tues/Wed/Fri 10am-6pm
Sat 10pm-5pm • Sun Closed • 330-867-2771



Women's Board

The Women's Board was formed in 1938 to "offer voluntary service and financial assistance to the Playhouse." Women's Board has energized youth education programs, sponsored productions, spearheaded fund raisers and paid for many of the amenities we appreciate in the Green Room/kitchen. Members of this active group are invaluable as hostesses, office helpers and backstage. The Women's Board sponsors an annual puppet presentation for children and also operates the Gift Boutique and Bank One Art Gallery.

New members are welcomed.

2003-2004 Officers

Thelma Coss President	Jane Krimmer Recording Sec.
Randie Sass First Vice President	Nancy Zeigler Treasurer
Jean Questel Second Vice President	Evelyn Stiggers Assistant Treasurer
Jacqui Sukie Corresponding Sec.	

Committee Chairs

Art Gallery Marci Paolucci	Hospitality Marta Williger
Boutique Mary Wolfman	Janet Budai
Boutique Treasurer Barbara O'Connor	Newsletters Jacqui Sukie
Costumes Janet Heilmeier	Pat Weill
Henrietta Cook	Puppet Show Jill Forster
Hostesses Patrice Bechtol	Leslie Lund
Pat Obenour	Membership Jacqui Sukie
Cast Suppers Wendy Cooley	Thelma Coss
	House Committee Jane Krimmer
	Betty Williams

Boutique Treasures

Our lobby Gift Boutique is a fund-raising project of our Weathervane Women's Board. Shop from one hour before curtain time or during intermission for great gift items. Prices are extremely reasonable and the items on sale include a

delightful variety from clowns and animal figures to pens, pins and earrings. Our Boutique volunteers will also assist you with information on purchasing gallery art works.



Our Generous Donors

Weathervane Playhouse gratefully acknowledges the financial support of our corporate, foundation and individual members. Lack of space keeps us from including a complete list in this playbill. A complete list is included in our mainstage playbills.

SUPER FOUNDERS (Gifts of \$10,000+)

City of Akron	The GAR Foundation	Ohio Arts Council
	Northern Ohio Golf Charities	Weathervane Women's Board

FOUNDER'S CIRCLE (Gifts of \$5,000+)

Akron Community Foundation	John A. McAlonan Fund	Sisler McFawn Foundation
Ann & Dave Brennan	OMNOVA Solutions Foundation	Lloyd L. & Louise K. Smith
Bridgestone/Firestone Trust	Charles E. & Mabel M. Ritchie	Memorial Foundation
Eileen & H. Peter Burg	Memorial Foundation	
Mary B. Demetros Foundation		

PLATINUM MEMBERS (Gifts of \$1,000+)

INDIVIDUALS

Fred & Francia Albrecht	Mr. & Mrs. George Moxon*
Elynmarie Kazle & Mark A. Zimmerman	Thomas R. Trotter & Martha Kaltenbach

CORPORATIONS & FOUNDATIONS

Babcox Publications	Michelson Foundation
Glenn R. & Alice B. Boggess Memorial Foundation	Laura R. & Lucian Q. Moffitt Foundation
Brennan Family Foundation	The RC & Katherine Musson
FirstEnergy Foundation	Charitable Foundation
The Goodyear Tire & Rubber Company	M. G. O'Neil Foundation
C. Blake & Beatrice McDowell Foundation	© TARGET

GOLD MEMBERS (Gifts of \$500 - \$999)

INDIVIDUALS

Susan & Patrick Baker	Eileen & Ralph Greene	David & Orlene Makinson
John Grafton &	Dr. & Mrs. Edward Koosed	Steven P. Schmidt, PhD*
Richard Worswick*	Richard & Leslie Lund	Mary & Mel Wolfman

CORPORATIONS & FOUNDATIONS

FirstMerit Bank, N.A.	Myers Industries, Inc.	Summit County Internists, Inc.
InfoCision Management Corp.	National City Bank	

SILVER MEMBERS (Gifts of \$250 - \$499)

INDIVIDUALS

David Ashe	Barry Friedman	Samuel I. Levey
Juanita & Chic Carlson*	Roy & Mary Hartz*	Patricia Obenour
Mildred Collis	Jim & Charlotte Horvath*	Barbara B. O'Connor
Dr. Paul Daum*	Jeffrey P. Houck*	John O'Neill
Margaret J. Dietz*	Dr. Jack & Libby Jacobs	Dr. Douglas & Jane Sanders
Dr. Richard & Mary Beth Ellison	Kathy & Doug Kohl	Connie & Bob Velotta
W. Scott & Sandra Emerick	Dr. Amy Lee*	
Helen & Chisna Fleming	Dr. Douglas & Karen Lefton*	

CORPORATIONS & FOUNDATIONS

Air Enterprises	FW Albrecht Family Foundation	Steere Enterprises
Annaco	GoJo Industries	Wetly Building Company
Bober, Markey, Fedorovich	Jeter Systems	Zuckerman Consulting Group
Business Interiors	Maynard Family Foundation	
Cedarwood Companies	Roetzel & Andress	

**Denotes Board of Trustees*



Building the Arts

Akron Art Museum
Blossom Music Center
Venture Place
Weathervane Playhouse



123 South Miller Road, Akron, Ohio 44333 Phone: 330-867-2400



Board of Trustees

Weatherlane Community Playhouse is a non-profit 501(c)(3) corporation operated by a board of volunteer trustees representative of the general community. Regular monthly meetings of the Board of Trustees are open.

Officers

George Moxon	President	Jim Horvath	Assistant Treasurer
Richard Worswick . . .	First V. President	William Glaeser	Secretary
Mary Beth Kluge . . .	Second V. President	Margaret J. Dietz	Historian
Laura Kerchner	Treasurer	Steven P. Schmidt . . .	Immed. Past Pres.

2003-2004 Trustees

Nancy Ashcom	Michael Davis	Dr. Amy Lee	Jack Steele
Kathy Ashcroft	Dr. Rozelle Duncan	Karen Lefton	Thomas Stephan
Barbara Baskin	Christopher Esker	Myron Lewis	Elinore Stormer
Clarence F. Carlson	Jon Fiume	John Morgan	Mary Warhol
Thelma Coss	Roy Hartz	Doug Mory	Mark A. Zimmerman
Paul Daum, Ph.D.	Jeffrey Houck	Sheila Motter	

Advisory Board Members

Mary Adams	W. Scott Emerick	Libby Jacobs	Dr. Susan Speers
Chuck Ayers	Helen Fleming	Eric Jones	Bob Velotta
Bunny Ballance	Jill Forster	Ardith M. Keck	Shari Whitfield
Madeline Bozzelli	Dr. Penelope Frese	Dede Klein	Mary Whitmer
Stanley Brandt	Ian Haberman	Eileen Moushey	Mary Wolfman
Ann Brennan	Richard Harris III	Jim Nilsen	Mel Wolfman
Nancy Cates	Bob Hasman	Jo Ann Oelschlager	Mona Wolfman
Ron Cimini	Marilyn Heagerty	Margo Snider	June Zeno
Frank Comunale			

Production Board

Mark A. Zimmerman -- Chair

Auditions	M.J. Coulson & John Cotter
WOMEN'S BOARD Costume Shop	Sandra Harding
FIRST ENERGY Lighting Dept.	Mark A. Zimmerman
Properties	John Riazzi
Sound	Charles Korecki & Tom C. Barnes
Stage Management	Nikki Rafferty
<i>Ex-Officio:</i>	
Women's Board Representative	Thelma Coss
Producer of Youth/Family Productions	Sean McConaha
Technical Director	Alan Scott Ferrall
Salon Series Coordinators	Tom Abdo & Suzanne Smith
Play Selection Chair	Beverly Smith
Executive Director	Elynmarie Kazle
House Managers	John Cotter



We're the bank who can help.

Second National Bank can help you adapt to parenthood by taking care of your newly acquired financial obligations. One of our Wealth Managers will help you invest, insure, and plan for future tuition payments. Along with anything else you need to give your wealth the attention it deserves. So you can give your family the attention it deserves. **Wealth Management**



The people making banking better.

Future Events

Special Events:

Schoolhouse Rock Live, Jr.

Sundays, Feb. 15 & 22 at 7 p.m.

Saturday, Feb. 28 at 2:30 p.m.

Tickets \$7

Mr. Lewis Rules: Stories of the Juvenile Justice System

Feb. 16 & 17 at 7:30 p.m.

Tickets \$10

Faithful Fathers/Stage Dads

April 2, 3 & 4

A weekend of education, entertainment and fun for African-American families.

Special guest: Charles S. Dutton

Pinocchio

by The Piper Puppets

May 6, 11 a.m. & 1 p.m. Tickets \$6

Mainstage Schedule:

A Lesson Before Dying

March 10 - 28

The Dinner Party -- April 14 - May 9,

Sponsored by Summa Health System

Nunsense -- June 9 - July 3, Musical

****Sundays at Seven:**

Enchanted April

February 29 at *2:30 p.m.

*note time change

**Sundays at Seven: Salon Play Readings are held in Weathervane's lobby at 7 p.m. on selected Sundays with light refreshments and discussions following presentations. Free of charge. All welcome.



In Our Bank One Visual Arts Gallery

Weathervane's theme for the season is "We're Going Places." To that end, Marci Paolucci, curator of the gallery, has enlisted the talents of two world travelers, **Michael** and **Martha Kermizis**, who have photographed many exotic places which include some interesting pictures taken in Scotland. Michael, an Akron native, is a former photography teacher at Buchtel High School. Though officially "retired," Michael and his wife continue their adventures into photography. Traveling with the "People to People Student Ambassador Program," an outbound student educational experience, has taken them into many strange lands and enhanced their collection exponentially. Michael likes to use a macro lens or a telephoto lens to capture pictures of considerable color saturation and density, always striving to catch his subjects off-guard. Martha reports: "As life pushes toward me, I distill the moment frozen on a fraction-of-a-second time scale, a microcosm, returning mystery and sacredness to space and place captured in a photo image for all to embrace. With camera in hand for fifty-one years, I have recorded these ciphers of my daily life experiences in my backyard, the Grand Canyon, Egypt, China, Utah, Oregon, biking the Cuyahoga Valley and walking around Our Lady of the Elms High School campus, where I have been teaching biology for thirty-two years. This photographic journey has given me an awareness of and gratitude for four billion years of the history of life on earth. It has revealed to me my personal connection with all of life and the enduring feeling that, in our life's journey, it all matters."

There is a Kermizis exhibit at Café Bohème, next to the Denis Conley Gallery and down the street from Ken Stewart's Grill on West Market Street, in addition to this show at Weathervane. The photographs are for sale with prices attached.



Next On Our Schedule



From the series created by George Newall and Tom Yohe
Based on an idea by David McCall
Book by Scott Ferguson, George Keating and Kyle Hall
Music and lyrics by Lynn Ahrens, Bob Dorough, Dave Frishberg,
Kathy Mandry, George Newall and Tom Yohe

A special presentation performed by
Firestone High School Theatre
Sundays, Feb. 15 & 22 at 7 p.m.
Saturday, Feb. 28 at 2:30 p.m.
Tickets \$7

A benefit for weathervane Playhouse and Firestone Theatre
330-836-2626 (Tu-F 10 a.m. - 5:30 p.m.)

Mr. Lewis Rules...

Stories of the
Juvenile Justice
System

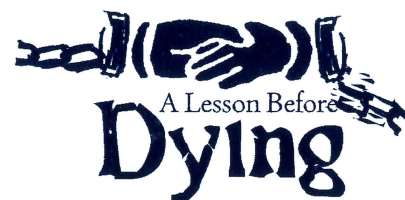
7:30 p.m.
Feb. 16 & 17
Tickets \$10

Written and performed by
Myron Lewis
Dramaturg & creative
consultant -- **Paul Linke**
Conceived & directed by
Jacqi Loewy



Lewis allows us into his "world" through his cautionary tales, shedding light on a day in the life of a juvenile parole officer.

Funding provided by the John A. McAlonan Fund of the Akron Community Foundation



adapted by Romulus Linney
from the novel by Ernest J. Gaines
March 10 - 28

The play tells the story of a guileless young black laborer who is wrongly convicted of murder. A teacher answers the plea of his Godmother and shows him how to die with dignity.

A Mainstage drama.



A restaurant in Paris.
Six place settings.
Mysterious invitations
to dine.

A Mainstage comedy
AKRON PREMIERE
Sponsored by
Summa Health System
Foundation

Members of every
faith will "heed the
call" to attend this
musical comedy about
the little sisters
of Hoboken.

A Mainstage
Musical



by Dan Goggin
June 9 - July 3

Weathervane Women's Board

presents



Pinocchio

Saturday, May 8
11 a.m. & 1 p.m.
All seats \$6

Also
M - F, May 3 - 7
at 10 a.m. & 12:30 p.m.

GOODYEAR

TRUST IN OUR PERFORMANCE

GOODYEAR PROUDLY SUPPORTS THE
**WEATHERVANE
COMMUNITY PLAYHOUSE**

Lonia,

Please don't "Break a leg!"

You are supposed to be dancing in College next year!

Enjoy your performance as much as we do.

Love,

Abba, Ema, Sarah, Rivka and Leah Friedlander



always ask for

Brad Ford Hirsch

**Sales and Leasing Consultant
KLABEN FORD, INC.**

1089 West Main Street
Kent Ohio 44240
330-593-6724 Direct Line
330-677-2863 FAX
800-686-3139 Toll Free
bhirsch@klaben.com
www.klaben.com



Weatheravane Community Playhouse

69th Season – 2003-2004

February 14 - 28, 2004

the crucible

by Arthur Miller

Directed by
Mark A. Zimmerman

Scenic Designer
Alan Scott Ferrall

Stage Manager
Rachel Harold

Properties Designers
Mike & Patrice Kormushoff

Assistant Stage Manager
Alison Cooper

Costume Designer
Randie O. Sass

Sound Designer
Jimmy Yost

Lighting Designer
Becca Carter

Choreographer
Lonia Friedlander

The Crucible is produced by special arrangement with
Dramatists Play Service, Inc.,
440 Park Avenue South, New York, N.Y. 10016.

Weatheravane Youth/Family productions are sponsored in part by **GOODYEAR**

All Weatheravane productions are sponsored in part by



Weatheravane Community Playhouse, 1301 Weatheravane Lane, Akron, OH 44313-5186
Ticket Office: 330-836-2626 – Fax: 330-873-2150 – Email: wcpakron@aol.com
www.weatheravaneplayhouse.com



Our Director

Mark A. Zimmerman is a working director with over 40 plays and musicals to his credit, including productions at Weathervane Playhouse (*The Philadelphia Story*, *Oliver!*, *All in the Timing*, *Dear Gabby: the Confessions of an Over-Achiever*), Coach House Theatre (*Collected Stories*), Cleveland Public Theatre (Eve Ensler's *Lemonade*, *Humankindness*, *The Fable of the Cloister Cemeteries*, *Progress*), The University of Akron (*Into the Woods*, *Picnic on a Battlefield*, *Talk Radio*), the Firehouse Theatre in Alliance (*The Nerd*) and Sandstone Summer Theatre in Amherst (*Fiddler on the Roof*). Zimmerman also serves as Weathervane's Production Board Chairman as well as the FirstEnergy Lighting Chair. He has lit Weathervane productions of *Proof*, *The Wiz*, *The Fantasticks*, *Seven Guitars*, *Little Shop of Horrors*, *The Glass Menagerie* and *Joseph and the Amazing Technicolor Dreamcoat*.

Director's Notes...

The Crucible has long been a vital part of the high school, college, and graduate school curriculum for many years. It is not hard to understand why when one encounters the play. The play itself is a relatively factual account of the 17th Century witch trials in Salem, Massachusetts. The actual trials were the result of a teenager's accusation of witchcraft against a slave named Tituba and later evolved into something larger.

Miller seems to show a keen interest in the historical situation; he maintains the outline of events with few changes. His detailed research helps him to recreate a remote and different civilization that could be easily linked to the McCarthy hearings of the 1950s, a situation in which the playwright was implicated at the time he was writing *The Crucible*.

The play moves beyond both the witch trials and the McCarthy hearings, however, and deals directly with the conflict between justice and evil, about the ever-present dangers of societal pressure and mass hysteria, and about the human emotions which often drive illogical conclusions and reactions. Miller's play shows these troubles as they stem from recognizable human failings: greed, vengeance, and jealousy, to name a few.

I think the play speaks to us all in a universal truth that is easily applied to our lives. In *The Crucible*, Arthur Miller speaks to us about the past and the present with eloquence.



The Crucible Cast (alphabetical listing)

Tituba	Dionne Atchison
Hysterical Girl/understudy, Abigail Williams	Kayley Bebber
Hopkins	Takéis Boston
Mary Warren	Elise Cordle
Hysterical Girl	Laura Cordle
Francis Nurse	Jason Davis
Hysterical Girl	Emily Esker
Mercy Lewis	Lonja Friedlander
Ann Putnam	Michelle Garrett
Sarah Good/Hysterical Girl	Kristen Goodearly
Thomas Putnam	Kyle Herman
Giles Corey	Blaze Hirsch
Rebecca Nurse	Margaret Lute
John Proctor	David Magnus
Hysterical Girl	Leah Magnus
Deputy-Gov. Danforth	Chase McGuire
Betty Parris	Kenzie Nothnagel
Hathorne	Santino Russo
Ezekial Cheever	Ruben R. Ryan
Rev. Samuel Parris	Simon A. Siegel
Susanna Walcott	Allison Smith
Rev. John Hale	James Smith III
Elizabeth Proctor	Zita Smith
Abigail Williams	Jessica Whitaker
Marshall Herrick	John Zido

Setting: Salem, Mass. -- 1692

There will be one 15-minute intermission.

***For your safety, we request that you remain seated until the house lights have come up at intermission and after the curtain call.**

***The use of cameras, recording equipment and laser pointers is forbidden during this performance.**

***As a courtesy to fellow audience members, please make sure that cell phones and pagers are turned off during the performance.**

***Please do not bring food or drink in the auditorium.**

***NOTE: In case of an emergency in which the performance cannot continue, Calamity Vouchers will be issued for a future performance. Thank you.**

Join Us for the Story of a Lifetime!

FROM THE DEAD SEA SCROLLS TO THE FORBIDDEN BOOK

Coming to Akron March 16-April 18, 2004

Mon.-Sat. 9am-9pm, Sun. Noon-9pm

John S. Knight Center • 77 E. Mill St.

Hosted by:

for the Benefit of:

FIRSTMERIT.

MAKE-A-WISH.

Make plans to experience one of the most impressive collections ever assembled to bring 5,000 years of history to life. Get a rare glimpse of more than a dozen fragments of the Dead Sea Scrolls and other religious treasures ranging from **actual artifacts from the time of Noah** (3100 B.C.), to a 1611 First Edition first issue of **The King James Bible**, to a 5,100-year-old **pictographic clay tablet**. This exhibit is the story of the written origins of where the Bible came from and the many manifestations of what it has become. World-renown academic scholars will speak on various dates throughout the exhibit.



Appearing Live
One Night Only

Wed., March 17, 7:00 pm Signature Sound Quartet

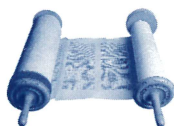
Special Combo Ticket: \$20, includes entrance to exhibit

- Voted Horizon Group of the Year SN Fan Awards '03
- Featuring Ernie Haase of the Cathedrals, voted Favorite Tenor, SN Fan Awards '03. Also featuring Tim Duncan, Ryan Seaton, Doug Anderson and Roy Webb
- Debut song was a top ten hit

www.TheScrolls.com

FOR EXHIBIT OR
CONCERT TICKETS

1-888-362-4253



Cast Callboard

DIONNE D. ATCHISON (Tituba) is a senior at Firestone High School and was recently named to the *Who's Who of American High School Students*. Dionne is active in theatre, performing in *Limbo*, *Annie Get Your Gun* and *The Wiz* among others. Her other activities include being the captain of the Firestone color guard and a member of the orchestra.

KAYLEY BEBBER (Hysterical Girl/understudy, Abigail Williams) is new to the Weathervane stage. A junior at Cuyahoga Falls High School, she was seen in its production of *Fiddler on the Roof*, as well as productions at ANTIC and Walsh Jesuit High School. Kayley's interests include yoga, visual art and reading.

TAKÉIS BOSTON (Hopkins) is a sophomore at Central-Hower High School and is making his stage debut in this production. His interests include dancing, rapping, and stand-up comedy.

ELISE MARIE CORDLE (Mary Warren) is a student at St. Vincent-St. Mary High School. Her interests include piano, horses and politics. She has performed as Golde in *Fiddler on the Roof* and as Marian in *The Music Man* and is making her second appearance on the Weathervane stage, having performed in this season's production of *Joseph*.

LAURA CORDLE (Hysterical Girl) is making her stage debut in *The Crucible*. Laura is a 7th grader at St. Hilary School in Fairlawn.

JASON DAVIS (Francis Nurse) is a freshman at Firestone High School, having previously appeared on the Weathervane stage in *The Emperor's New Clothes*. Jason plays soccer for the Firestone Falcons and for the Greater Akron Premier.

EMILY CAROLINE ESKER (Hysterical Girl) is a seasoned performer, having been seen in theatre and ballet venues

across the city. A sophomore at St. Vincent-St. Mary High School, her stage work has been in *A Christmas Carol*, *Brigadoon*, *The Snow Maiden*, *Fiddler on the Roof* and *Newsies*.

LONIA FRIEDLANDER (Mercy Lewis/Choreographer) is a National Merit Scholar Semi-Finalist who plans to major in chemistry at Washington University in St. Louis. Lonia is a senior at Firestone High School making her Weathervane debut with this production of *The Crucible*.

MICHELLE GARRETT (Ann Putnam) returns to Weathervane after being seen in the theatre's 1995 production of *Winnie the Pooh*. A junior at Central-Hower High School, Michelle is an active student, involved in softball and volleyball, and enjoys dancing in her spare time.

KRISTEN GOODEARLY (Sarah Good/Hysterical Girl) is a senior at Wadsworth High School and works as a sales associate at Karen's Hallmark. Her most recent stage role was as the Centaur in *The Lion, the Witch and the Wardrobe* at the Brunswick Theatre. She enjoys playing basketball.

KYLE HERMAN (Thomas Putnam) is a freshman at Stow-Munroe Falls High School. Kyle is a seasoned performer who has previously appeared at Weathervane in *Joseph* in 2002 and 2003 and as Wilbur in the 2001 production of *Charlotte's Web*.

BLAZE F. HIRSCH (Giles Corey) is an Akron resident and a sophomore at Firestone High School. A 4.0 student, Blaze is also a two-time letterman for the Falcons football team. His previous experience includes the role of George Gibbs in Weathervane's production of *Our Town* in 2002.

MARGARET LUTE (Rebecca Nurse) is one busy young woman. A junior at Firestone High School, Margaret is also a representative for the Thespian troupe, a



Cast Callboard Continued

volunteer at Edwin Shaw Hospital, and a Soap Box Derby racer. Her acting talents have taken her to stages across the region including Stow Players, Streetsboro Community Theatre and ANTIC.

DAVID MAGNUS (John Proctor) is a seasoned performer whose representative work includes roles in *The Servant of Two Masters*, *The Man Who Came to Dinner*, *Romeo and Juliet* and *The Laramie Project*. He is a junior at Firestone High School.

LEAH MAGNUS (Hysterical Girl) is a student at Miller South School of the Visual and Performing Arts where she performed in productions of *Richard III*, *Macbeth* and *The Philadelphia*. This eighth grader has also performed with the Ingenue Theatre Company, an arts program sponsored by the City of Akron.

CHASE MCGUIRE (Deputy-Governor Danforth) is returning to Weathervane many years after appearing in *Holiday Memories*. A senior at Norton High School, Chase has performed at The Players Guild, Western Reserve Playhouse, and The Magical Theatre Company. His hobbies include watching movies, writing and listening to music.

KENZIE NOTHNAGEL (Betty Parris) was last seen at Weathervane as Baby Louise in last season's production of *Gypsy*. A 7th grader at Our Lady of the Elms, Kenzie has studied piano, ballet, jazz and voice for the past decade.

SANTINO JAMES RUSSO (Hathorne) is a sophomore at Highland High School. He has been seen on the Weathervane stage in *Our Town*, *Stuart Little* and the last three productions of *Joseph*. Russo recently appeared as Mike in *Charlie and the Chocolate Factory* at Brecksville Theatre on the Square and he is very active in the theatre program at his high school.

RUBEN R. RYAN (Ezekial Cheever) has spent most of his teenage years at Weathervane. A seasoned performer, Ruben has appeared in Weathervane productions of *Hamlet*, *The Laramie Project*, *Our Town* and *Anne of Green Gables*. A second degree brown belt in karate, Ruben enjoys many other pursuits including, comic books, Anime, video games and Dungeons and Dragons.

SIMON ANTHONY SIEGEL (Reverend Samuel Parris) is a senior at Firestone High School where he has appeared in seven productions. His representative roles include Young Reuven in *The Chosen*, Truffaldino in *The Servant of Two Masters* and Prince John in *The Lion in Winter*. Simon is also an accomplished juggler.

ALLISON SMITH (Susanna Walcott) is making her stage debut in *The Crucible*. A freshman at Revere High School, Allison enjoys playing guitar, photography and raising her pet goat. Allison dedicates her time to helping save the ever-depleting species of the sea turtle.

JAMES SMITH III (Reverend John Hale) was the 2002-2003 Winner of the Chanticleer Award for Best Supporting Actor in a Musical for *The Wiz* at Weathervane. A senior at Firestone High School, James has appeared in many shows including *Gypsy*, *Annie Get Your Gun*, *Our Town* and *Schoolhouse Rock Live, Jr.*

ZITA SMITH (Elizabeth Proctor) is a junior at Barberton High School where she was honored as a National Merit Scholar. She has appeared in school productions as well as productions at The Magical Theatre Company. Zita enjoys sculpting, painting and swimming.

JESSICA WHITAKER (Abigail Williams) is a senior at Firestone High School. Performances there include *Dear*



Cast Callboard Continued

Gabby, *The Man Who Came to Dinner* and *The Servant of Two Masters*. She hopes to pursue acting in college.

JOHN ZIDO (Marshall Herrick) is a

freshman, at Ellet High School and returns to the Weathervane stage having performed in the 2003 Summer Stock production of *The Laramie Project*.



Backstage Callboard

RACHEL HAROLD (Stage Manager) is a junior at Firestone High School and is a veteran of the Weathervane stage management training class. She has previously served as an assistant stage manager for *The Wiz* and the Ohio Community Theatre Association Festival 2003 and stage managed her first show, *Just Passing Thru*, at Firestone this past fall.

ALISON COOPER (Assistant Stage Manager) has worked on and performed in many shows at Weathervane, Miller South and Firestone High School. A freshman at Firestone, Alison has participated in the Power of the Pen program, Jr. Thespians, and loves watching *ER*. The *Lord of the Rings* trilogy is her current obsession.

JIMMY YOST (Sound Designer) is a junior at Cuyahoga Falls High School, where he has crewed *Fiddler on the Roof*, *Faith County*, *Rumors*, *The Diary of Anne Frank* and *A Connecticut Yankee in King Arthur's Court*. Jimmy enjoys working with machines and building cool stuff.

BECCA CARTER (Lighting Designer) is a junior at Firestone High School. Her previous work includes *Just Passing Thru*, *The Man Who Came to Dinner*, *Annie Get Your Gun*, *The Wiz*, *Fiddler on the Roof* and *Gypsy*. She thanks her talented crew.

MIKE & PATRICE KORMUSHOFF (Properties Design) are pleased to be

involved in their first production at Weathervane. They encourage all other Youth Theatre parents to become involved in the production aspects of the shows at Weathervane Playhouse.

RANDIE OSTROFF SASS (Costume Design) has costumed many of Weathervane's award-winning shows: *Fiddler on the Roof*, *Fences*, *Master Harold...and the boys*, *The King of the Kosher Grocers* and *Oliver!* She holds a Master's degree in library science and is the local past president of the Hadassah and she wishes to thank her daughter, Leah, for her help and support on this show.

KATHRYN A. KOHL (Assistant Technical Director) holds a degree in Elementary Education from Bowling Green State University and a Masters of Business Management from Aurora College. Kohl began her theatre career as a volunteer on many lighting and set construction crews. She won a Chanticleer for her work on *The Philadelphia Story*.

ALAN SCOTT FERRALL (Scenic and Lighting Design) began at Weathervane Community Playhouse under the guidance of former Technical Director John R. Thomas. Scott has won three Chanticleer awards, as stage manger for *Fences*, as lighting designer for *The Laramie Project* and co-lighting designer for *A Man for All Seasons*.



More Information...

Accessibility

Weather vane Playhouse is handicapped accessible. Ramps are available to the front doors, auditorium and seating.

Assisted-listening devices for the hearing impaired are available at the Ticket Office.

Large-Type program inserts are available at the Ticket Office. These copies are not full playbills but contain information unique to this production. These inserts are photo-copied and are available in limited quantity.

American Sign Language interpretations are scheduled for selected Sunday performances.

Ohio Relay System 1-800-750-0750 TDD. Call to have your ticket order placed.

Weather vane Playhouse Staff

Elynmarie Kazle -- Executive Director

Keith D. Campbell

Supervisor, Front-of-House
& Patron Relations

Alan Scott Ferrall

Scenic Designer/Technical Director

Janis L. Harcar

Director of Marketing &
Development

Sean McConaha

Dir. of Ed./Producer Youth Prod.

John A. Cotter

Business & Public Relations Assistant

Kathy Kohl

Assistant Technical Director

Caroline Kline

Bookkeeper

Drea Jean L. Brown

Data Services Manager

Dionne Atchison

Intern

Memorial Contributions were made to Weather vane Playhouse
in honor of **H. Peter Burg** by

Margaret J. Dietz
The Moushey Family
Mary Kate Clancy

Helen & C.H. Fleming
Elynmarie Kazle & Mark A. Zimmerman

Memorial Contributions were made to Weather vane Playhouse
in honor of **Bill Plant** by

Sandra & Mark Auburn
Kathryn A. Belfance
Mary Jean & Ted Colberg
Margaret J. Dietz
Helen & C.H. Fleming
Elynmarie Kazle & Mark A. Zimmerman
Martha & Andrew Kochman
Leslie & Richard Lund

Frances McGovern
The Moushey Family
Aldah & Tress Pittenger
Marguerite L. Plant
Doris Rehm
Gertrude & John Skelly
Nancy & Robert Welch
Mary & Mel Wolfman



Production Team Members & Crews

Alan Scott Ferrall -- Technical Director

Kathy Kohl -- Assistant Technical Director

SET CONSTRUCTION

Ruth Richardson

Kathy Kohl

Kevin Ford

Tom Marshall

Spencer Burke

John Keller

PROPERTIES

Sarah Kormushoff

COSTUMES

Leah Sass

Ben Sass

Sandra Harding

Betty Williams

Henrietta Cook

Dorothy Kies

Sarah Friedlander

Babs Uhl

Janet Heilmeier

Linda Avers

Pat Weill

Cindy Smith

Zita Smith

~~Jane Smith~~

~~Julie Cooper~~

~~Lori Davis~~

Ethel Soudry

LIGHTS

Spencer Burke

Andrea Baer ✓

Rachel Zelin

Sarah Swirsky

Leandra Schindler

Becca Winer ✓

Rachel Dubin

Katie Farragher

Evan Cohen ✓

SOUND

Dan Jankura

Maureen Burns

Tom Barnes

David Ruggles

Acknowledgments

Vaughn Austin -- OCTA Representative

Weather vane Women's Board

Weather vane Staff

Parents of the Cast & Crew

Hudson Players

Streetsboro Community Theatre

Sandridge Foods,

Mike and Kim Sandridge

ACME Fresh Markets

estatesalestuff@ebay.com

John Riazzi

Belated Acknowledgements for

The Mystery of Irma Vep

Amber Kempthorn - paintings

Dick's Gun Room, Inc. - antique guns

Richard Worswick - starter pistol

Weather vane Community Playhouse

is a proud member of




**Ohio
Community
Theatre
Association**


Project STAGE

Project STAGE is a program developed by Weathervane Playhouse to bring to young audiences the excitement of live theater. Teachers and students receive study guides and pre-performance, in-class discussions are conducted free of charge by Weathervane staff and volunteers. The **special Project STAGE ticket price is \$8.**

Proof, October 15 - November 2, 2003; *The Crucible*, February 14 - 28, 2004 and *A Lesson Before Dying*, March 10 - 28, 2004 are the Project STAGE offerings for the 2003-2004 season. We will be glad to help you make the arrangements to bring your students. Call our Education Department at 330-836-2323 ext. 17.



summit artspace
plus




SUMMIT COUNTY
THE HIGH POINT
OF OHIO

a
partnership

James B. McCarthy

Firestone Theatre

2003-2004 Season



EVITA

music by Andrew Lloyd Webber
Lyrics by Tim Rice

directed by Mark A. Zimmerereman
and Michele Valdez

March 4 - 6, 2004, 7:30 p.m.

Firestone High School
333 Rampart Avenue, Akron
(330) 873-3408




FUNS COSTUMES

& MAGIC EMPORIUM

Costumes • Wigs • Hats
Make Up • Santa & Bunny Suits
Mardi Gras Beads
St. Patrick's Day • Luau
Book Reports

10% Off your next purchase
thru 09/30/04

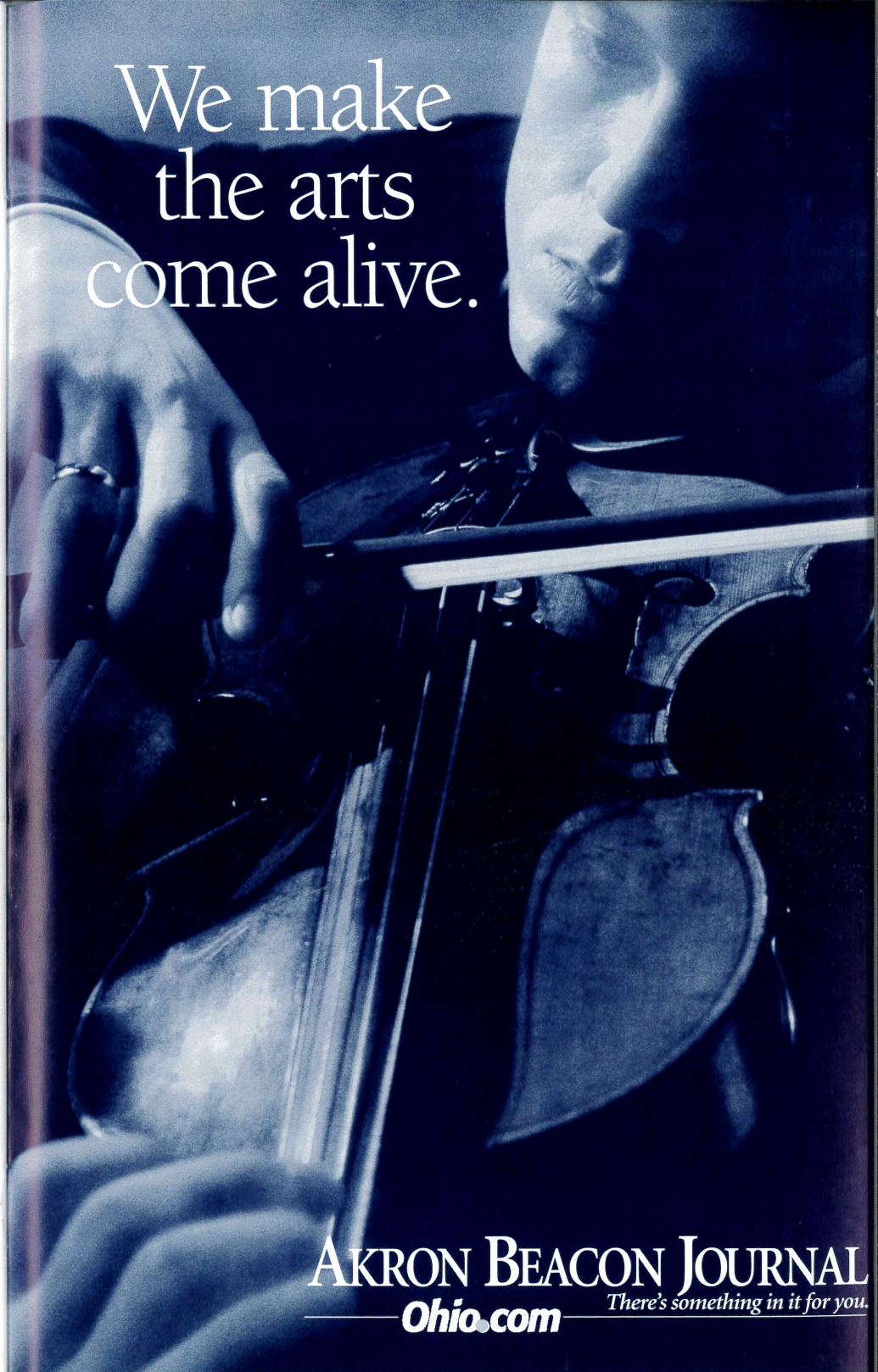
4130 State Road • Cuyahoga Falls
330-923-3339



Community
Cash Back Program

September 7 - May 15

Bring your Acme register tapes in to John Cotter and we'll receive a 1% return on them. This great program was developed by the Acme stores to help community organizations.



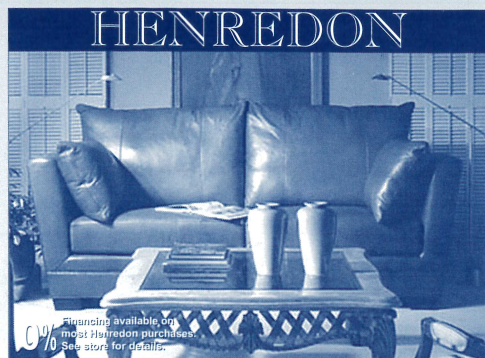
We make
the arts
come alive.

AKRON BEACON JOURNAL

Ohio.com *There's something in it for you.*



The Best Place For Fine Furniture in Greater Akron is at Wayside



- Over 200,000 sq. ft. of inventory.
- Providing friendly, responsive service for over 66 years.
- Professional interior designers on staff.
- We buy and sell for less ... every day.

Fine pieces from these quality manufacturers on display:

Kincaid • Pennsylvania House
Stanley • Lexington • Nautica
Lane • Smith Brothers • Flexsteel
Bob Timberlake • Cochrane
Serta • Broyhill • Clayton Marcus
Canadel • Howard Miller • Hooker
Sumter • Crescent • Dozens More

Visit our newly-opened 10,000 square-foot addition!

Wayside
furniture

"Where You'll Find Better Furniture Priced Lower"

1367 Canton Road Akron On Route 91,
just 1/4 mile south of Route 224
Shop Daily 10 to 9, Saturday 10 to 6, Sunday 1 to 6
Visit our website: www.wayside-furniture.com

330-733-6221
Toll Free 877-499-3968

Stinaff's
DATA FORMS & SYSTEMS SINCE 1935



We're a great cast
of performers
in meeting your
full color printing and
business form needs!

44 S. Summit St. • Akron, OH 44308
330-434-2106 • Fax 330-434-9376

SPOTLIGHTS

Your Ticket To ENTERTAINMENT

WEST SIDE
Leader

Reaching 43,600 homes
and businesses in one
of America's best
demographic markets.

GREEN
Leader

Reaching over
10,000 homes and
businesses
in the city of Green.

3075 Smith Road Suite 204 • Akron, OH 44333
(330) 665-9595 • Fax: (330) 665-9590

Graf
Growers
Garden Center • Farm Market

1015 White Pond Dr. Akron
330.836.2727
grafgrowers.com

Bring this ad to
Graf Growers & receive

\$5 off \$25
reg. price plant purchase
through 8/31/04

Be Anybody.

Our Lady of the Elms

A Dominican Education for Girls.

Open House

Sun, Sept 14: 1-3 p.m.
Wed, Oct 8: 6-8 p.m.
Sun, Nov 2: 1-3 p.m.
Wed, Mar 31: 6-8 p.m.

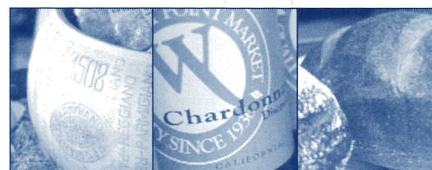
For more information, please contact
the Office of Admissions at:

1220 W. Market St.
Akron, Ohio 44313-7108

(330) 867-0918

www.ourladyoftheelms.org

Start Here.



Entertain Your Palette

Specialty foods and wines

Mrs. Ticklemore's Tea Room

Beside the Point Café

Movable Feast box lunches & dinners

Catering

Gift baskets for all occasions

WEST POINT MARKET

1711 West Market St., Akron OH 44313

330-864-2151 / 800-838-2156

Mon-Sat 8am-7pm / Sunday 10am-5pm

www.westpointmarket.com



PAPAJOE'S

Lucasini's
SINCE 1932

Dinner before or after the show.

Minutes from

Weathervane Playhouse

Restaurant - Deli - Wine Shoppe

Banquets - Catering

1561 Akron-Peninsula Road

(330) 923-7999

THE
Grotto
ON MERRIMAN

Seafood & Steaks
at casual
dining prices.

1841 Merriman Rd.
Akron, OH 44313

330.869.4981



**Membership
Warehouse**
FOR BUSINESS & HOME

A SAM'S CLUB Membership gives you access to:

Huge Savings
Brand-name Merchandise
Great member Benefits

3750 "J" West Market St.
Fairlawn, Ohio 44333

Marketing 330-665-5337
Main 330-665-5336
Fax 330-665-5430

*Weathervane Playhouse
thanks
Tiffany Bakery
for the beautiful opening
night cakes.*



Wedding Cakes

330-753-0017
2176 Romig Road
Akron, OH 44320



Volunteering at Weathervane

Weathervane began as a volunteer organization and continues its growth thanks to the time and talent that members of our community invest in it. Our on-stage performers have worked long and hard to earn your applause. But their work is supported by many other unseen men and women who've helped build and paint sets, run the lights and sound, make sure that properties and set dressing items are in their proper places and do other backstage labor from stage managing to costuming and make-up. Supporting those who are actively involved in putting on each show are still more volunteers who usher, house manage, sell tickets, keep our office running and serve on our Board of Trustees, Board committees, Production Board and Women's Board.

Their spirit is the backbone of our continuing operations, a valued support on which our professional staff relies.

Each month, we acknowledge the outstanding Volunteers of the Month in our lobby, but those volunteers represent all who commit their time and interest to create a great theater experience for everyone who's come to see this show.

If you have friends or relatives who volunteer generously at Weathervane, we hope you'll take a moment to thank them for their help and their support of the cultural enrichment of our community. Better yet, join them! Call us and we'll help you win your own share of the applause for a "jolly good show," an experience that offers unique challenges with every performance.

GREGG LAUCK

800.795.1366
Fax 330.342.4826



**THE GREENHOUSE
FLORIST**



Mon. - Fri. 9-5
Sat. - 9-3



ORCHARD PLAZA * 5825 DARROW RD * HUDSON, OH 44236

Share the Annual Chanticleer Celebration

Shortly after the final production of each season, Weathervane volunteers and friends share an exciting party to acknowledge outstanding performances by performers and technical volunteers. The top performers are awarded rooster statuettes—Chanticleers—in recognition of their work, as voted by Chanticleer "judges." It's a great night to get together, share hopes, fun and festivities and is open to all.

Awards are presented for outstanding lead performances by a male or female

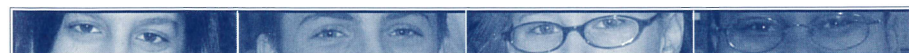
in a drama or comedy, outstanding support performances, and outstanding lead and support in a musical as well as choices in technical achievement. Chanticleers are also awarded for Properties, Lights, Costumes and Sound Design, plus Best Production of the season. In addition to performance and production awards, the event also recognizes the Top 25 outstanding volunteers of the season. We welcome you to take part in the biggest nail-biting party of the year.



**Don Drumm
Studios & Gallery**

It all comes together here.

437 Crouse Street, Akron, OH 44313
330.253.6268
M-F: 10-6, S:10-5



Different stories. Proven approach. Real success. Lawrence School.

Northeast Ohio's leader in learning disabilities education since 1969!

1551 East Wallings Road • Broadview Hts. • 440-526-0717 • www.lawrenceschool.org

MALONE

CHALLENGING
CONTEMPORARY
CHRISTIAN

God has blessed us with great powers of expression, and Malone College wants you to appreciate the energy such expression generates. At Malone you can immerse yourself in the arts—just dive in! There are a wide variety of opportunities in the visual arts, music, and theatre, both on and off campus.

Looking for an “arts experience” at Malone?

You don't have to look far: Chancel Players, Chapel Band, Chorale, Concert Band, Instrumental Ensembles, Jazz Band, Marching Band, MC Comedy, Mime Team Ministry, Mural Projects, Outreach Music & Drama, Theatre Productions, Vocal Ensembles, Women's Concert Choir; and the list goes on. . .

MALONE
COLLEGE
CHRIST'S KINGDOM FIRST

www.malone.edu

Why is this man smiling?



Paul Moskowitz
Akron Publishing Company

Because his customers are too.

If you haven't been smiling lately, please call Akron Publishing Company for your next custom publishing project. We will produce brochures, magazines, catalogs, directories, books and more . . . all of them from concept to completion. Akron Publishing Company will be the only call you'll need to make.

AKRON
PUBLISHING COMPANY

phone: 330.929.2703 ▲ fax: 330.923.0856

e-mail: akronpublishing@neo.rr.com

We do really good work, so that you'll look really good.



Volunteer Opportunities

Complete and detach this form and return it to the Ticket Office or mail to:
Volunteer Opportunities, 1301 Weathervane Lane, Akron, OH 44313-5186

NAME _____

ADDRESS _____

CITY _____ ZIP _____ PHONE _____

I am interested in the following areas: (Check as many as you wish)

_____ Acting	_____ Costuming	_____ Fund Raising
_____ Set Building	_____ Orchestra	_____ Box Office
_____ Painting	_____ Sound	_____ House Managing
_____ Usher	_____ Lighting	_____ Play Reading/Selection
_____ Backstage Crew	_____ Classes	_____ Board Membership

_____ Other _____

_____ Best time to reach me at the above phone number _____

_____ I am a subscriber. _____ I am a donor.

I HAVE AN OPINION...

About tonight's play _____

About the current season _____

About future seasons _____

I have a fund-raising idea. _____

We appreciate, and often respond to, opinions offered about our work. Be sure to fill in your name and address above if you wish a response or would like to be contacted.



Volunteer Responsibilities

Here's a quick introduction to the responsibilities volunteers undertake to make our shows work. If you'd like to try your hand at any of these jobs, please call us. We'll help you learn! Volunteers with 100 hours or more of service are eligible for a special Weathervane membership!

*** Stage Management** - Duties include assisting the director throughout the rehearsal period, calling cues, keeping backstage safe and orderly, and coordinating the technical needs of the show with the actors. A great opportunity for those who enjoy planning, communicating and taking charge. Once the director's work is done, it's the Stage Manager who runs each performance.

*** Set Construction** Use your building skills, carpentry or painting techniques to help make illusion come to life. Help is needed days and evenings.

*** Costumes** Designers and workers are vital. We invite skilled and unskilled seamstresses to make or alter costumes, create patterns, care for costumes during a show and keep our wardrobe department organized.

*** Lighting** Experience is a plus, but you can learn by assisting others who know computers and electrical requirements. We'll train eager volunteers to help hang, focus, and add color to lighting instruments. We'll also teach you how to run the light board and follow spots. *Nobody can see the show without you.*

*** Sound** Create the music and sound effects tapes that enrich the aural envi-

ronment for each show or add "live" backstage sound. Run the sound system for technical rehearsals and productions.

*** Properties** All the items that help "dress" a set and all those used by actors in rehearsal and performance (from tea sandwiches to "deadly" weapons and "shattering" windowpanes) must be borrowed, built or cooked. Many volunteers are needed to work on each performance.

*** Office Volunteer** If you enjoy dealing with the public, we can use your help during office hours and on show nights to assist in taking money and answering the phone to take reservations. You may also help with mailings, work with staff, and greet customers and visitors.

*** Ushering** Welcome audience members with your smile, show them to their seats, pass out programs, and serve refreshments at intermission. Your help is always welcome.

*** House Manager** This representative greets the audience, tears tickets and guides theater-goers to ushers for seating. You'll work with the stage manager to coordinate the timing of intermissions and remain in the lobby throughout the show to handle any emergency.

Weathervane Community Playhouse

is a proud member of



Ohio
Community
Theatre
Association



Luigi's

"An Akron Tradition Since 1949"

- Award Winning Food
- Casual Dining
- Old World Elegance

Featuring Our Famous Homemade

- Pizza
- Lasagna
- Antipasto

OPEN 7 DAYS
105 N. MAIN ST.
330-253-2999



*A healthy
child is
music to
our ears.*



Akron
Children's
Hospital

Feels Like Family

One Perkins Square
Akron, Ohio 44308-1062
(330) 543-1000
www.akronchildrens.org



A Great Night Out Deserves A Good Ending...

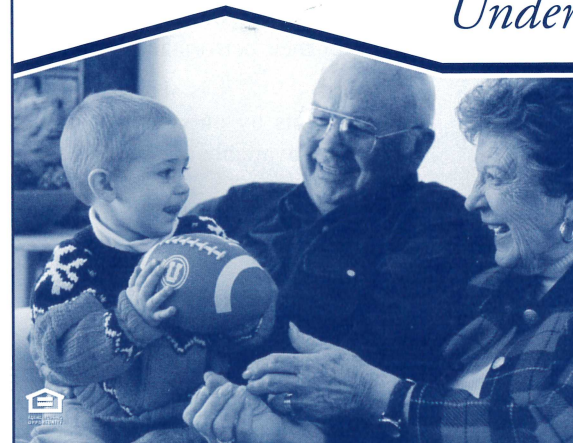
Stop at the Whistle Stop Tavern

Located in Quaker Square
Downtown Akron
330.253.5970

Featuring great food & drinks
Experience our wine list
Visit our new and unique shops



The CUTLER
Family of Companies
Under One Roof...



CUTLER/GMAC Real Estate, Akron/Canton's real estate leader, is a diversified one-stop, total homeownership company. Whether you are looking for a new home or preparing to sell one, we can make your dreams a reality, with the convenience of a real estate, mortgage and title company under one roof.

CUTLER  Real Estate

TITLE
ONE
AGENCY

MORTGAGE **1** ONE

www.cutlergmac.com

Allows You Time To Enjoy What's Really Important.

Kindermusik®
a good beginning
never ends

Singing, Movement & Instrument Play,
Ages infant - 7

Daniel's Music Studio

BATH • RICHFIELD • FAIRLAWN
(330) 659-3173

www.kindermusikneohio.com

Kindermusik® with Miss Terri
& Friends

STOW RETAIL PARK • 4962 DARROW RD.

Also visit our DrumPlay Store or have
your Birthday Party with us!

(330) 655-8499 • (877) 650-8320

www.kindermusikwithmissterri.com

FIVE *At* FIVE

CONCERTS OF UNIVERSAL INSPIRATION
ON SUNDAY AFTERNOONS AT 5 O'CLOCK

SEPTEMBER 21, 2003

THOMAS HEYWOOD

AUSTRALIAN ORGAN VIRTUOSO

OCTOBER 19, 2003

FAURÉ REQUIEM & ORGAN SOLOS

WESTMINSTER CHOIR, FIRESTONE SYMPHONIC CHOIR,
CHAMBER ORCHESTRA AND ORGAN

DECEMBER 7, 2003

AMAH AND THE NIGHT VISITORS

A FULLY STAGED CHRISTMAS CLASSIC

FEBRUARY 29, 2004

OHIO STATE UNIVERSITY MEN'S GLEE CLUB

A SPECTACULAR 90 VOICE MEN'S CHORUS

MAY 9, 2004

HITS FROM THE OPERATIC & BROADWAY STAGE

PERFORMED IN WRIGHT-HERBERICH HALL

WESTMINSTER PRESBYTERIAN CHURCH
1250 WEST EXCHANGE STREET, AKRON, OHIO
330.836.2226

Beware of the Dreaded No-Show

Have you ever seen empty seats at a sold out sporting event or concert? Weathervane has the same problem. Single-ticket buyers and subscribers who may have exchanged from another performance wonder why they weren't given those prime empty seats for the evening.

When you buy a subscription, you are promising to come to the theater for that ticketed performance and we hold your seat(s). These subscription seats are held until intermission. This, additionally, makes it impossible to tell if a performance is ever really sold out and annoys ticket buyers who see that they could have been seated in a better spot.

Subscribers: Please call the Ticket Office at 836-2626 if you will not make your ticketed performance. Thanks.

Weathervane Traditions

Meet the cast Many cast members spend a few minutes in the lobby area to meet and greet friends after performances. It's your chance to thank them for their performance.

Intermission Tea is served with our compliments by our volunteers. Soft drinks are available at a nominal cost.

Opening Night Receptions welcome audiences on first Friday performances. We provide light snacks and refreshments after the show so you can share in the celebration.

For your sweet tooth snacks are available for purchase before the show and during intermission. Refresh-ments (other than water) are not permitted in the auditorium.



Who Gets On Stage?

Our volunteer performers come from throughout greater Akron and North-eastern Ohio. They've committed themselves to four or more weeks of rehearsals plus performances. Their greatest reward is your applause.

Many performers come with substantial theatrical experience. Others are new to the stage. Auditions are open to all and our non-traditional casting policy opens the way for many performance opportunities. Except in cases where race, gender, age or disability is essential to the play, all roles are cast on the basis of talent.

Local newspapers carry audition dates and times or call Weathervane at 330-836-2626 to be added to the audition mailing list. Some directors prefer to set appointments for audition times and may ask that you come prepared with a brief

monologue, improvisational subject or musical number. Copies of plays scheduled or audition scenes are often available for a nominal deposit.

When you arrive at the theater on audition nights, you'll learn about the rehearsal and performance schedule. You may also register as a production volunteer if you're interested in learning about the technical opportunities in the show.

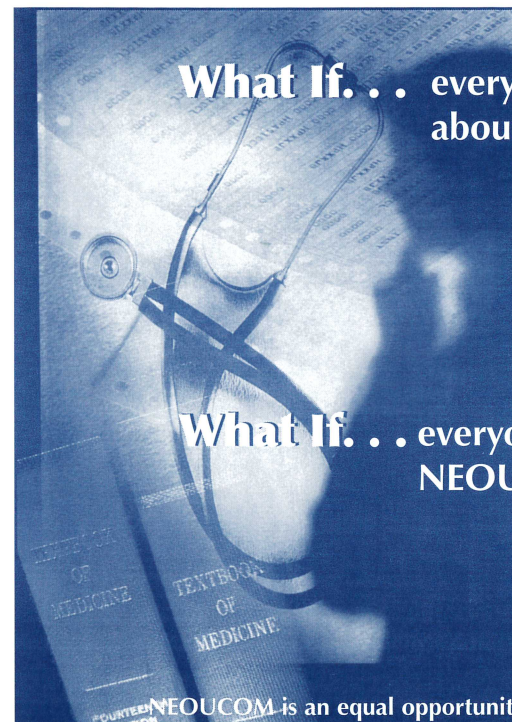
You may be asked to return for callbacks and will be notified of the director's cast selection as soon as possible. Please note that if you don't win the role you've wanted so badly, it may not necessarily reflect on your talent. The director's choice of cast members must take many factors into account to develop the proper "relationships," style and reality of the ensemble. Don't be discouraged.

What If... every doctor knew as much about caring as curing?

At NEOUCOM, we teach not only the science of medicine, but also the art of healing.

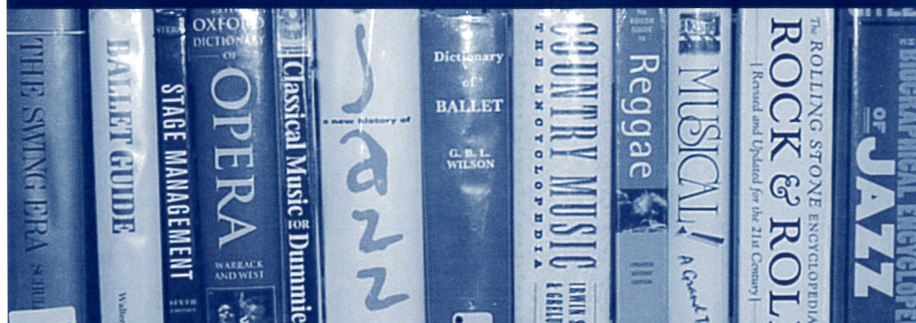
What If... everyone had a NEOUCOM doctor?

NEOUCOM
NORTH EASTERN OHIO UNIVERSITIES
COLLEGE OF MEDICINE
www.neoucom.edu

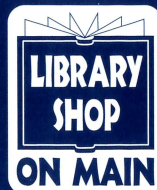


NEOUCOM is an equal opportunity employer and educator.

Top-shelf arts and culture (Within easy reach)



**Akron-Summit County
Public Library**
Main Library, Mobile Services
and 17 branches located
throughout Summit County
330-643-9000
www.ascpl.lib.oh.us



Your source for novel gifts
and gently used books
Operated by the
Friends of Main Library
1040 E. Tallmadge Ave.,
Akron 330-643-9070
www.lsom.org



Hiram College

Intimate Learning. Global Reach.

Experience our distinctive curriculum. Hiram has two different learning formats for students—for young adults, the **traditional college** offers our renowned academic program in a residential environment; for adult learners, the **Weekend College** lets students earn their degrees with minimal interference in work/family responsibilities.

Call 1.800.362.5280 or visit www.hiram.edu.
For information on the Weekend College
program, please call 330.569.5161.

Fun and Free for the Whole Family!



2003-2004 Exhibitions

**Hans Hofmann: Selections from the
Berkeley Art Museum Collection**
September 20, 2003 – January 3, 2004

Jim Dine Prints: 1985-2000
January 17 – March 27, 2004

**Akron
Art
Museum**

70 East Market Street
Akron, Ohio 44308-2084
330.376.9185
www.akronartmuseum.org

The arts start here.

Art starts with inspiration.
Inspiration starts with new experiences.
New experiences are our business.
That's the Akron Advantage.

www.uakron.edu



"At The University of Akron, we have set the stage for world-class excellence in the arts. By developing new generations of artists, partnering with arts organizations, and providing local venues for internationally-acclaimed theatrical and musical productions, we continue to help define the social and cultural landscape of Northern Ohio."

- Luis M. Proenza
President, The University of Akron

The University of Akron

The University of Akron is an Equal Education and Employment Institution