

*Listen to  
your dreams.*

Valley Savings Bank has been contributing to  
the rhythm of life in this community since 1923.  
Our commitment is to help our customers reap the  
benefits of their hard work and dreams.



**330-923-0454**

[www.valleysavingsbank.com](http://www.valleysavingsbank.com)

140 Portage Trail and 505 Graham Road, Cuyahoga Falls • 3707 Darrow Road, Stow

# WEATHERVANE

## COMMUNITY PLAYHOUSE

*Andrea Bauer*

Youth/Family Production No. 74

**2005-2006**

# ANTIGONE

*By Sophocles*

Simply Grand  
ENTERTAINMENT

February 17 - March 5, 2006





## Always Listening

With U.S. headquarters in Stow, Ohio, Audio-Technica is a worldwide group of companies devoted to the design, manufacture, marketing and distribution of problem-solving audio equipment. Initially known for state-of-the-art phonograph cartridges, A-T now creates high-performance microphones, headphones, wireless systems, mixers and electronic products for professional and home use.

Winner of numerous industry awards, Audio-Technica manufactures products that set quality, durability and price/performance standards for major concert tours, broadcast and recording studios, corporate and government facilities, theaters and house-of-worship venues.

Learn more at [www.audio-technica.com](http://www.audio-technica.com)



To all Weathervane Playhouse Patrons:

# This Invitation is for You!

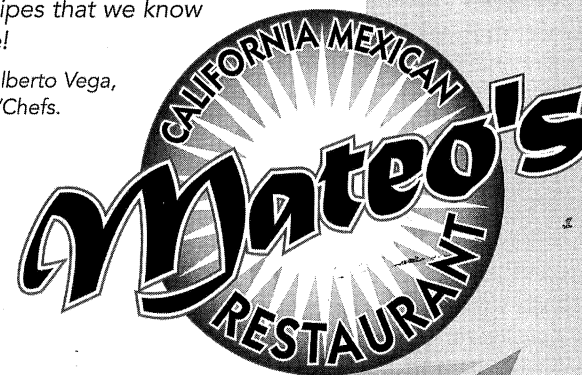
Please join us at **Mateo's** for our *California Mexican Style Cuisine* which is different from south of the border cooking and is known for its eclectic and flavorful dishes.

*"Mateo's Restaurant is defined as classic, colorful, eclectic, with exquisite presentation. Mild and flavorful dishes, using only the freshest and highest quality products available."*

— Akron Beacon Journal, West Akron Sun and Scene Magazine.

*"The dishes on our menu are original recipes that we have created and prepared. We have 28 years of travel, creativity and experience to bring you new recipes that we know you will love!"*

— Zoila and Alberto Vega,  
Proprietors/Chefs.



- Traditional & Fresh Fruit-Flavored Margaritas
- Imported Beers from Latin America

Mention the Weathervane Playhouse to your server and we will reward you with a 10% discount off your next meal (food only, please).

Tuesday – Thursday 11am to 9pm, Friday 11am to 10pm  
Saturday 9am to 10pm, Sunday 9am to 8:30pm  
Closed Mondays.

**330.836.3944**

1375 N. Portage Path, Akron, OH 44313

We are conveniently located just down the street from the Weathervane, turn left onto Akron-Peninsula Rd. turn right on Portage Path and a quick left into Mateo's.



2005-2006 *The 71st Season*

*Weathervane Community Playhouse*

1301 Weathervane Lane, Akron, OH 44313-5186

330-836-2626 ♦ Fax 300-873-2150 ♦ www.weathervaneplayhouse.com

***Snow White and the Seven Dwarfs***

Adapted by Jessie Braham White  
July 30 - August 14, 2005

***Much Ado about Nothing***

Comedy by William Shakespeare  
September 14 - October 2, 2005

***Over the River and through the Woods***

Comedy by Joe DiPietro  
October 19 - November 6, 2005

***Joseph and the***

***Amazing Technicolor Dreamcoat***

by Tim Rice and Andrew Lloyd Webber  
Nov. 25 - Dec. 18, 2005

***Crowns***

by Regina Taylor

A gospel musical based on the best-selling book *Crowns:*

*Portraits of Black Women in Church Hats*

January 11 - February 5, 2006

***Anitgone*** by Sophocles

February 17 - March 5, 2006

***Lend Me a Tenor***

Comedy by Ken Ludwig  
March 22 - April 9, 2006

***Wait Until Dark***

Thriller by Frederick Knott  
April 26 - May 14, 2006

***Aladdin*** Performed by the Piper Puppets

May 6, 2006

***The Sound of Music***

by Richard Rodgers & Oscar Hammerstein II

June 14 - July 16, 2006

***Angels in America***

by Tony Kushner

*Millennium Approaches* -- Nov. 10 - 19, 2005

*Perestroika* -- May 18 - June 4, 2006

*Patron Information*

\* **Emergency Exits** located at the left front of the auditorium and left side of the lobby. Front door and lobby doors will also be used.

\* **Restrooms** Located in lobby alcove - wheelchair accessible.

\* **Handicapped Services** Seating for a limited number of wheelchairs. Please notify in advance if needed.

\* **Assistive Listening Devices** Available thanks to the generosity of Virginia and J. Robert Wilson.

\* **Patrons:** Expecting a call? Leave name and seat number with the House Manager. *Please turn off your cell phones, pagers and audible watches.*

\* **Beverages and Food** may not be taken into the auditorium during performances.

\* **Use of Cameras and Recording Devices** is prohibited during performances.

\* **Curtain time** Wed./Thurs. at 7:30 p.m., Fri./Sat. at 8 p.m. and Sun. at 2:30 p.m.

\* **Latecomers** will be seated at the rear of the auditorium during a suitable break in the play if space is available and may take their reserved seats after intermission.

\* **Exiting the Theater** Please remain seated until the auditorium lights are on. Parking lot illumination assures that getting to your car will be easy and secure.

\* **Smoking** is permitted outside the building.

\* **Lost and Found** items will be held at the Ticket Office until claimed.

\* **Comments** from audience members are always welcomed with interest. Please feel free to write to Weathervane to express your views and opinions about our productions. Send your comments to: *Executive Director, Weathervane Community Playhouse.*



Patron

Generosity

Weathervane appreciates the continuing strong support of individuals, corporations, foundations and other donors who help finance the theater's operations, capital improvements and endowment program. Weathervane is classified as a 501(c)(3) organization and contributions are tax deductible. Following are some of the many ways in which you can take pride in your support of the art of theater in our community.

\* **Become a Weathervane Member**

Your annual support makes you a voting member of Weathervane Community Playhouse. You'll receive discounts on educational programs and other benefits, based on the membership level you choose. Members are invited to Weathervane's annual meeting and to other special events. Memberships are renewable annually, beginning at \$75 (Contributing), and continuing at Sustaining, Patron, Silver, Gold, Platinum and Diamond Levels. Membership is actively solicited in the fall but is accepted at any time. Members are recognized in the Playbill.

\* **Give a Special Gift To Say You Care**

Special donations may be made at any time to memorialize a friend or relative whose interest in Weathervane was significant to his or her life. You may also recognize and celebrate important dates or current achievements of relatives, friends or associates.

\* **Remember Weathervane in Your Will**

What better way to carry on your tradition of support to Weathervane than by a planned gift. By taking advantage of the tax laws which encourage charitable giving, the U.S. Government will share in the cost of your gift to Weathervane. Your gift can fulfill a specific purpose or project while providing your estate with tax savings. To help ensure that Weathervane will continue, please contact our Executive Director for more information.

\* **Check For Matching Gifts** Many national and local corporations will

match your donations to Weathervane, increasing your generosity to the theater. Please check whether or not your company participates in such a program.

\* **Designate Gifts To Local Foundations**

Several of this area's larger foundations accept memorial and tribute gifts in the name of specific organizations such as Weathervane Community Playhouse. Such gifts help assure continuing grants to the theater's operations and special projects. We are enormously grateful for the impressive history of foundation support in this community.

\* **Sponsor or Underwrite a Production**

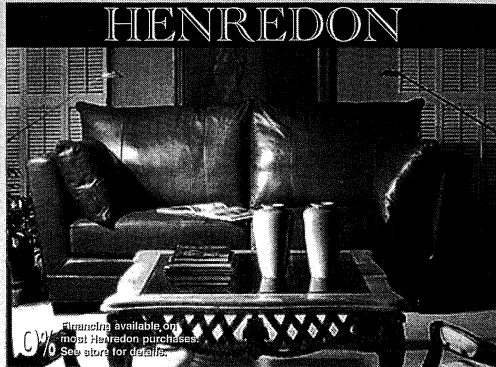
Our productions may be underwritten by local corporations or foundations. Benefits can include private "command performances" and special receptions for employees and friends when your business chooses this important method of support. Please call 330-836-2626. We'd like to discuss this kind of opportunity with you.

\* **Capital Project**

The construction segment of the Capital Project in 2000 included a scene shop with basement storage, a 2nd-floor classroom and rehearsal hall, soundproof production booth, elevator and fly gallery pocket above the stage and installation of the rigging system for the fly gallery. Donations for Stage Two of the project continue to purchase classroom furnishings, update the lighting system, renovate the lobby and replenish the Capital Fund for maintenance and repairs.



The Best Place For Fine Furniture in Greater Akron is at Wayside



- Over 200,000 sq. ft. of inventory.
- Providing friendly, responsive service for over 68 years.
- Professional interior designers on staff.
- We buy and sell for less ... every day.

Fine pieces from these  
quality manufacturers on display:

Kincaid • Pennsylvania House  
Stanley • Lexington • Nautica  
Lane • Smith Brothers • Flexsteel  
Bob Timberlake • Cochrane  
Serta • Broyhill • Clayton Marcus  
Canadel • Howard Miller • Hooker  
Saloom • Crescent • Dozens More

Visit Our New Premium Furniture Clearance Outlet

**Wayside**  
furniture

"Where You'll Find Better Furniture Priced Lower"

1367 Canton Road Akron On Route 91,  
just 1/4 mile south of Route 224  
Shop Daily 10 to 9, Saturday 10 to 6, Sunday 1 to 6  
Visit our website: [www.wayside-furniture.com](http://www.wayside-furniture.com)

330-733-6221  
Toll Free 877-499-3968

Experience the dedication and  
talent of spirited performances.



Our range of legal expertise will move you.

Proud to Support the  
Akron Arts Community

**VORYS, SATER,  
SEYMOUR AND PEASE LLP**

First National Tower • 106 South Main Street  
Akron, OH 44308-1417

tel (330) 208-1000 • fax (330) 208-1001

[www.vssp.com](http://www.vssp.com)

Akron, OH Cleveland, OH Columbus, OH Cincinnati, OH Alexandria, VA Washington, DC

**3** Hiram  
College

INTIMATE LEARNING. GLOBAL REACH.

3 DISTINCT PROGRAMS AT ONE PRESTIGIOUS INSTITUTION

Hiram's **residential program** offers students unmatched opportunities for study abroad and hands-on learning through our unique academic calendar. Our Tuition Guarantee locks in tuition and fees for four years, making college costs predictable. Call 800.362.5280.

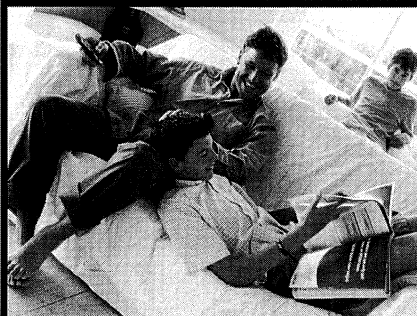
Working adults can earn their degree by taking classes on alternate weekends through the **Weekend College at Hiram College**. Students enjoy small classes, flexible scheduling, and career counseling. Call 330.569.5161.

Hiram's new **Master of Arts in Interdisciplinary Studies** is an innovative and flexible program. Students can earn their master's in as little as two years by taking classes on alternate weekends. Call 330.569.6111.

[www.hiram.edu](http://www.hiram.edu)

relax.

Business Insurance • Personal Insurance • Life Insurance • Employee Benefits



**LEONARD**  
Insurance Services

Providing Professional Insurance Service Since 1964.

4244 Mt. Pleasant St. N.W. Suite 200  
North Canton, Ohio 44720  
1-800-451-1904 / 330-266-1904 / Fax 330-498-9946

[www.leonardinsurance.com](http://www.leonardinsurance.com)





## History *From the Barn to the Valley*



Four society women urged Weathervane Playhouse into existence in 1935 - Grace Hower Crawford, Laurine Schwan, Helen Troesch and Muriel Maclachlan. They started with amateur theatricals at Coach House Theater, then as now part of Akron Woman's City Club. Back then Coach House was a club theater with closed membership and profits going back to the club. This left nothing for theatrical expansion or experimentation, so the ladies set up shop in a barn owned by U.S. Senator Charles Dick on Marshall Avenue. They had no money so they planned a carnival. After expenses, they cleared \$65 and declared themselves good to go.

Friends assisted in cleaning the barn that had been a garage for the Senator's cars. They scrounged for seats, curtains and a coffee pot. Seven fully costumed and staged plays were presented during the first three weeks of the summer of 1935. The audience applauded while bringing cushions from home to sit on -- the benches were hard. There was no running water or heat in the barn, but the operation had a name -- Weathervane, named for the chanticleer on the cupola of the barn. The ladies agreed that they would produce everything -- comedy, tragedy, Shakespeare, new works -- even opera. They also decreed that anyone who fit a part could be on their stage.

"The barn" was home until 1951 when it was sold, leaving the troupe homeless. The Board renovated a cement block building on Copley Road. This served until the late 1960's when the troupe moved to the Valley. In the early years,

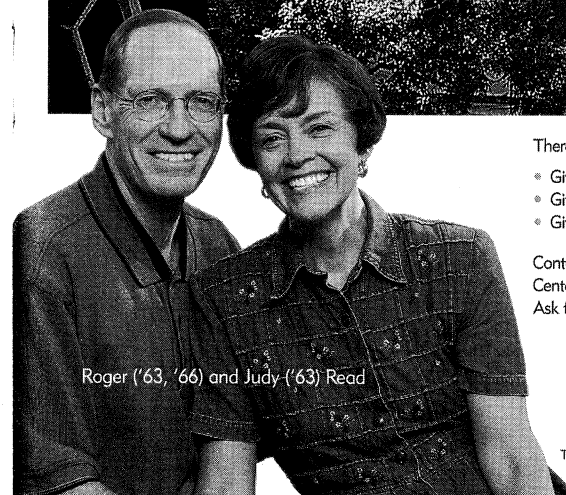
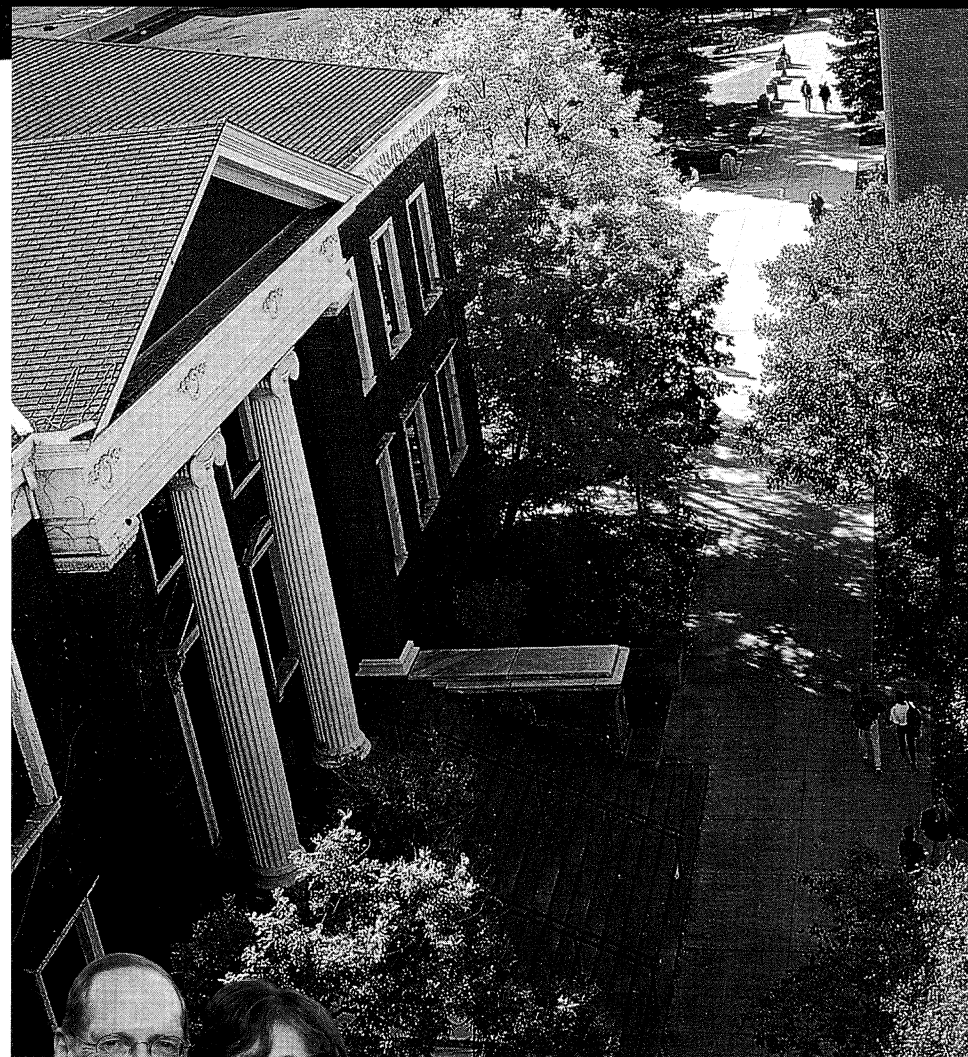
directors came from the membership and were charged with casting, costumes, settings and publicity. By 1960, there were so many shows that Bob Belfance was hired as theater director. Along with custodian/ticket manager Nora Scott, the two-person staff relied on volunteer support.

A Women's Board was formed in 1938 to offer volunteer and financial assistance. The Youth Theater Workshop grew out of classes offered by the original founders. Muriel Maclachlan was particularly energetic in teaching children, bringing in experts in dance and voice to assist her in teaching the youngsters. Muriel's classes grew until they became today's Education Department. Project STAGE©, a program with reduced-price, school day matinees for students, was added in the early 1990s.

A fund-raising drive in the late 1960s built the present facility on Weathervane Lane. The Playhouse opened in 1970 with Maggie Moore's production of *Dark of the Moon*. Grace Crawford, who died in 1971, left a legacy to pay off the mortgage. Construction made possible by the most recent Capital Campaign added classrooms, rehearsal space, scene shop, additional prop storage, elevator, library, fly gallery, stage mechanics, a sound-proof production booth and a costume shop, and also upgraded the roof and HVAC system.

Weathervane celebrated its 500th Mainstage production with the award-winning *The Laramie Project* in February, 2003. The John L. Dietz Classroom Theater for students and black box productions had its inaugural production as part of our 70th Season, opening with *Angels in America: Millennium Approaches* in January 2005.

Invest in the future. Invest in The University of Akron.



Roger ('63, '66) and Judy ('63) Read

There are many ways you can give to The University of Akron.

- Gifts of Cash
- Gifts of Appreciated Property
- Gifts of Real Estate
- Bequests
- Gift Annuities
- Charitable Remainder Trusts

Contact David Horn, Director,  
Center for Gift and Estate Planning at 330-972-6870.  
Ask for the booklet entitled *Reflecting on Tomorrow*.

The  
University  
of Akron

The University of Akron is an Equal Education and Employment Institution



Volunteer

Sign-Up

Complete and detach this form and return it to the Ticket Office or mail to:  
Volunteer Opportunities, 1301 Weathervane Lane, Akron, OH 44313-5186

NAME \_\_\_\_\_

ADDRESS \_\_\_\_\_

CITY \_\_\_\_\_ ZIP \_\_\_\_\_ PHONE \_\_\_\_\_

E-Mail Address \_\_\_\_\_

I am interested in the  
following areas:

(Check as many as  
you wish)

\_\_\_\_\_ Usher

\_\_\_\_\_ Classes

\_\_\_\_\_ Backstage Crew

\_\_\_\_\_ Fund Raising

\_\_\_\_\_ Costuming

\_\_\_\_\_ Box Office

\_\_\_\_\_ Acting

\_\_\_\_\_ Orchestra

\_\_\_\_\_ House Managing

\_\_\_\_\_ Set Building

\_\_\_\_\_ Sound

\_\_\_\_\_ Play Reading/Selection

\_\_\_\_\_ Painting

\_\_\_\_\_ Lighting

\_\_\_\_\_ Board Membership

\_\_\_\_\_ Other \_\_\_\_\_

\_\_\_\_\_ Best time to reach me at the above phone number \_\_\_\_\_

\_\_\_\_\_ I am a subscriber.

\_\_\_\_\_ I am a donor.

I HAVE AN OPINION...

About tonight's play \_\_\_\_\_

\_\_\_\_\_

About the current season \_\_\_\_\_

\_\_\_\_\_

About future seasons \_\_\_\_\_

\_\_\_\_\_

I have a fund-raising idea. \_\_\_\_\_

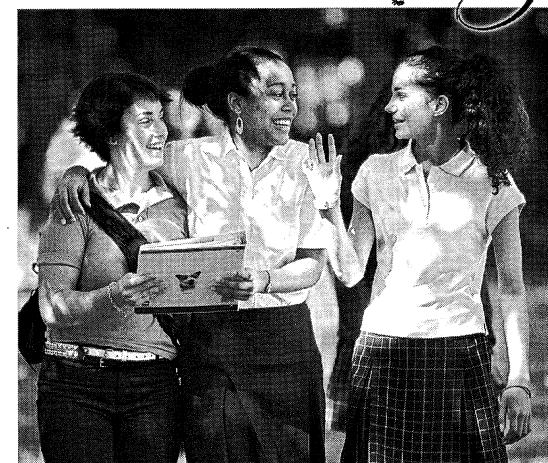
\_\_\_\_\_

We appreciate, and often respond to, opinions offered about our work. Be sure to fill  
in your name and address above if you wish a response or would like to be contacted.

# the Andrews Advantage

The Andrews Advantage is a curriculum designed to encourage critical thinking skills. Intensive writing, insightful reading and effective communication across all disciplines prepare students for a lifetime of learning.

Andrews has it all! Day school and boarding options, small class sizes, athletics, fine arts, and a world-class equestrian program. Call the Admissions office at 440-942-3606 or visit [www.andrews-school.org](http://www.andrews-school.org) to find out how The Andrews Advantage can benefit your daughter."



*Prepared for College, Prepared for Life!*

The Andrews School ~ [www.andrews-school.org](http://www.andrews-school.org) ~ 38588 Mentor Ave. Willoughby, Ohio 44094



## Become a Part of Summit County's

## Musical History™

Special Collections, the Library's division responsible for maintaining local history materials, is planning a permanent collection of area music from Summit County-based musicians, professional or amateur, past and present.

Our local music wish list includes recordings by local

- pop
- rock
- blues
- jazz
- gospel
- classical
- R&B
- rap/hip-hop
- country
- folk and ethnic recording artists

Also accepting related  
historical materials  
such as photographs,  
posters, programs,  
flyers and videos.

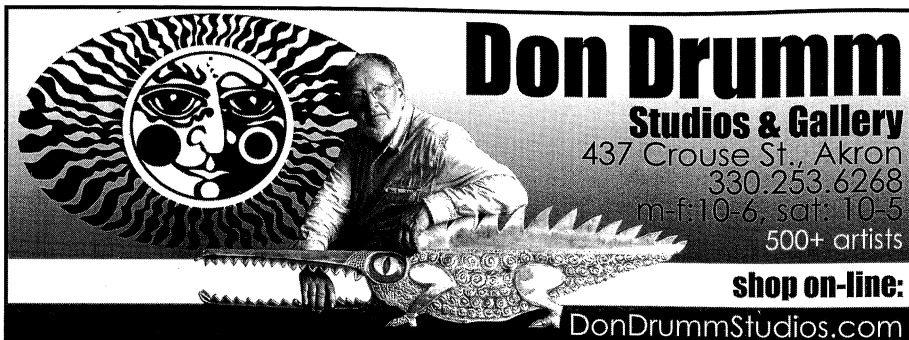
**How?**  
*By participating in a new  
initiative to collect and  
preserve Summit County's  
rich musical heritage!*

If you are willing to donate your materials to the  
Library, please contact the Special Collections  
Division at 330-643-9030, by e-mail at  
[speccollections@akronlibrary.org](mailto:speccollections@akronlibrary.org) or visit the  
Web site at [www.akronlibrary.org/main-sc.html](http://www.akronlibrary.org/main-sc.html)

All materials will be housed in the Library's new  
Special Collections Division at Main Library







# Don Drumm

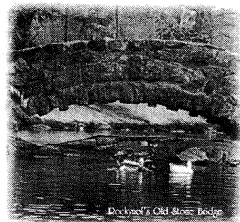
## Studios & Gallery

437 Crouse St., Akron  
330.253.6268  
m-f: 10-6, sat: 10-5  
500+ artists

**shop on-line:**  
DonDrummStudios.com

The Longer I Live  
the More Beautiful  
Life Becomes.

— Frank Lloyd Wright



Rockynol...You'll Be Happy to Call Us Home!

ROCK RYNOL

Akron's Premier Retirement Community

330-867-2150



Amer  
Cunningham  
Co., L.P.A.

Attorneys and Counselors At-Law

159 South Main Street, Suite 1100 Akron, Ohio 44308  
Phone: 330/762-2411 Fax 330/762-9918  
Visit us online at [www.amer-law.com](http://www.amer-law.com)



Ticket Information

❖ **Tickets** Purchase in person or charge by phone with Visa, MasterCard or Discover at 330-836-2626, Tuesdays through Fridays 10 a.m. to 5:30 p.m. and on performance Saturdays from noon to 5:00 p.m. *Reservations are also required when using coupons from your Weather-vane Super Coupon Book, complimentary tickets or coupons offered from any other cooperating arts organization.* Please arrive 20 minutes before curtain time to pick up your tickets.

❖ **Special seating** Please inform us if you have seating preferences due to visual, auditory or other physical needs. Please remember orders are filled on a first-come, first-served basis with season subscribers and advanced group sales taking first priority.

❖ **Season Subscriber Exchanges** must be phoned in at least 24 hours prior to your originally scheduled performance. We can't always guarantee the same seats but we'll give you the closest available re-

placements. An upgrade fee applies when changing from a Preview Night. *If you cannot use your subscription seats, please call us at least 24 hours in advance to release them. We will recognize this as a donation.*

❖ **Student Rush Tickets** go on sale 30 minutes before curtain time. Students with a valid ID may purchase any remaining tickets for half price. Rush tickets cannot be reserved in advance.

❖ **Discounted Group Reservations** are available for groups of 15 or more. Call Weather-vane at 330-836-2626 to learn how you can entertain friends, associates or clients with a night at the theater or to plan a fund-raising event for larger groups.

❖ **Gift Certificates** are available at any time in any amount you choose.

❖ **Recycle your playbills** If you do not wish to keep the playbill, please drop it in our recycling box as you exit the theater.


# THE Grotto

ON MERRIMAN

## Seafood & Steaks at casual dining prices.

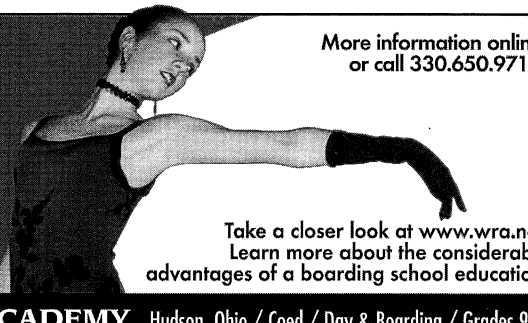
1841 Merriman Rd.  
Akron, OH 44313  
**330.869.4981**

One of the nation's **finest** boarding schools is not in New England



**Open House:**  
Sat., Oct. 29, 2005  
Sat., Apr. 29, 2006

More information online  
or call 330.650.9717.



Take a closer look at [www.wra.net](http://www.wra.net).  
Learn more about the considerable  
advantages of a boarding school education.

**WESTERN RESERVE ACADEMY** Hudson, Ohio / Coed / Day & Boarding / Grades 9-12

PROUDLY  
SUPPORTING  
THE ARTS.



**TITLE ONE AGENCY** **1** **MORTGAGE ONE**

Want to make your real estate experience as simple as possible?

**Let the convenience of CUTLER/GMAC Real Estate work for you.**

An independently owned and operated firm



*New members are welcomed.*

**Margaret Dietz** . . . . . President  
**Jill Forster** . . . . . First Vice President  
**Wendy Cooley** . Second Vice President

Art Gallery .....	<b>Marci Paolucci</b>
Boutique .....	<b>Mary Wolfman</b>
	<b>B.J. Ziegler</b>
Boutique Treasurer	<b>Barbara O'Connor</b>
Cast Suppers .....	<b>Randie Sass</b>
Costumes .....	<b>Henrietta Cook</b>
Hospitality .....	<b>Janet Budai</b>
	<b>Marta Williger</b>
Hostesses .....	<b>Bess Raines</b>
	<b>Wendy Cooley</b>

delightful variety from clowns and animal figures to pens, pins and earrings and some special items for the “men” in your life. Our Boutique volunteers will also assist you with information on purchasing gallery art works.





## Weathervane's Professional Staff

**ELYNMARIE KAZLE** (Executive Director) is in her ninth Weathervane season. Her 25+ year theatre career began in stage management then moved into producing, fundraising and public relations. She's had the pleasure of working with a wide range of artists from Baryshnikov to Tommy Tune to Viggo Mortenson, in theaters such as The Mark Taper Forum, San Diego's Old Globe, Sacramento Theater Company, Opera Columbus, Great Lakes Shakespeare Festival and Brooklyn Academy of Music. Akron played an important part of her career early on when she apprenticed with Tom Skelton at Ohio Ballet. In addition, past experience includes a stint with the *Wall Street Journal*, working at Brandt & Brandt, Robert Freedman Dramatic Agency serving as cultural ambassador to Sweden. She has served six years as USITT's VP of Membership and Development where she founded the nationally-known Stage Management Mentoring Project. She lives in Akron with husband Mark and her 10-year-old son Banno.

**JANIS L. HARCAR** (Director of Marketing & Development) holds an M.A. in Arts Administration from The University of Akron and a B.S. in Music Education from Kent State University and has been a Weathervane staff member since 1993. She serves as the Artistic Director of the Ravenna Community Choir and Director of St. Paul Lutheran Church Choir also in Ravenna. Jan was honored with the 2003 Trustees Award.

**ALAN SCOTT FERRALL** (Scenic Designer/Technical Director) began at Weathervane under the tutelage of John R. Thomas. This is his ninth season. Before Weathervane, he worked at Cuyahoga Falls High School where he was awarded a Design Excellence citation from USITT

and a place in *Who's Who Among America's Teachers*. He has designed for many local high schools as well as for The Players Guild, Cleveland Signstage and Channels 45/49. This past year he was awarded an Excellence in Set Design from the Ohio AACTFEST for *A Lesson Before Dying*. Scott has earned four Chanticleer Awards -- one as stage manager for *Fences*, the others as lighting co-designer for *A Man for All Seasons* and lighting designer for *The Laramie Project* and *A Lesson Before Dying*. He takes great pleasure in writing the end-of-the-season revue for The Not-Ready-for-Mainstage Players who appear at our annual Chanticleer Awards Dinner.

**SEAN McCONAHA** (Director of Education and Producer of Youth/Family Productions) holds a dual major in Theater Performance and Pre-Law from West Virginia Wesleyan College and an M.A. in Theater from The University of Akron. He is a free-lance actor and director throughout northeastern Ohio. Sean directed the OCTA award-winning production of *Romeo and Juliet* as well as Chanticleer winners for Best Production, *The King of the Kosher Grocers* and *A Lesson Before Dying* and the inaugural Dietz production of *Angels in America: Millennium Approaches*. He lives in Bolivar with wife, Beth, daughters, Leda and Delaney, and twins Zoe and Griffin.

**KEITH D. CAMPBELL** (Supervisor Front-of-House & Patron Services) holds a B.A. in English from The University of Akron, where he served as editor of *The Buchtelite* and sang with the Akron Symphony Chorus. During the summers of 1995 and 1996, he interned in the box office at Porthouse Theatre Company. Keith joined the Weathervane staff in November 1996 and was honored with the 2005 Trustees Award. He lives in Akron.



## Professional Staff continued

**JOHN COTTER** (Business and Public Relations Assistant) has the duties that come with helping Jan and Keith in the Marketing and Box Office areas. He also coordinates our Acme Community CashBack program and urges everyone to save their Acme register tapes and bring them to him at the Playhouse. John retired after 36 years with Ohio Edison and has been a long-time volunteer of the Playhouse having served on the Production Board as its President and Co-Chair of Properties. He has also worked backstage for many productions and has won Chanticleers for Properties Design for four productions. He is, however, most proud of his three grandchildren, Dana, Nicholas and Kristin.

**KATHRYN A. KOHL** (Assistant Technical Director) holds a degree in Elementary Education from BGSU and a Master of Business Management degree from Aurora College in Aurora, IL. She began her theater career as a volunteer on many lighting, set construction and props

crews. She won a Chanticleer for properties co-design of *The Philadelphia Story*. Kathy also serves as Resident Master Carpenter and Master Painter for the Theatre Department at Firestone High School. She lives in West Akron with husband Doug and their three children, Stephanie, Zachary and Katie.

**DREAJEAN L. BROWN** (Data Services Manager) holds a Master of Science degree in Technical Education and a Bachelor of Science degree in Education from The University of Akron. She is the Director of Administration for the Ohio & Erie Canalway Coalition. She is an active member of Delta Sigma Theta Sorority, Inc. Akron Alumnae Chapter. Drea says her major priority is spoiling her grandchildren. Balancing her time with work and family, she still finds time to crochet baby blankets for the Neo Natal Unit at Children's Hospital in Akron, and lap afghans for the Life Care Facility in Pittsburgh, PA.

Weathervane Playhouse is a member of American Association of Community Theatre, Akron Area Arts Alliance and Ohio Community Theatre Association.



## Many Thanks to Our Season Sponsors

Ohio Arts Council - Season Sponsor  
WKSU 89.7 FM -- Season Sponsor  
Buckingham, Doolittle & Burroughs --  
*Much Ado about Nothing*  
The Goodyear Tire and Rubber Company --  
our Youth/Family Series  
Sisler McFawn Foundation -- Project STAGE  
ONMOVA Solutions Foundation --  
Project STAGE  
Akron Publishing Company - Ad Sales

Minx Design - Graphic Designer  
Greystone Hall -- Reception Sponsor  
The Grotto on Merriman -- Reception Sponsor  
*Watch for the Grand Opening of the  
Grotto at Tallmadge Circle featuring the  
"Grand Buffet"*  
Tiffany's Bakery -- Opening Night Cakes  
Ashe/Graves Management Group -- *Wait Until  
Dark*



## Board of Trustees

Weathervane Community Playhouse is a non-profit 501(c)(3) corporation operated by a board of volunteer trustees representative of the general community. Regular monthly meetings of the Board of Trustees are open.

### Officers

Mary Beth Kluge . . . . .	President	Jim Horvath . . . . .	Assistant Treasurer
William Glaeser . . . . .	First Vice Pres.	Chic Carlson . . . . .	Secretary
Christopher Esker . . . . .	Second Vice Pres.	Margaret J. Dietz . . . . .	Historian
Jack Steele . . . . .	Treasurer	George Moxon . . . . .	Immed. Past Pres.

### 2005-2006 Trustees

Kathy Ashcroft	Margaret Dietz	Roy Hartz	Lucy J. Randles
Barbara Baskin	Rozell Duncan	Charles Korecki	Virginia Sayre
Aaron S. Berke	Jon Fiume	Karen Lefton	Chas Schreckenberger
Henry Bishop	Harold Foster	Myron Lewis	James Sneed
Desiree Bolden	Barry Friedman	Gregg Manes	Richard Worswick
Robert Core			

### Advisory Board Members

Mary Adams	W. Scott Emerick	Eric Jones	Thomas R. Trotter
Chuck Ayers	Helen Fleming	Ardith M. Keck	Bob Velotta
Bunny Ballance	Jill Forster	Dede Klein	Shari Whitfield
Madeline Bozzelli	Dr. Penelope Frese	Leslie Lund	Mary Whitmer
Stanley Brandt	Ian Haberman	Eileen Moushey	Mary Wolfman
Ann Brennan	Richard Harris III	Jim Nilsen	Mel Wolfman
Nancy Cates	Bob Hasman	Jo Ann Oelschlager	Mona Wolfman
Ron Cimini	Marilyn Heagerty	Margo Snider	June Zeno
Frank Comunale	Libby Jacobs	Dr. Susan Speers	

### Production Board

**Charles Korecki and Bill Berry -- Chairs**

Auditions . . . . .	M.J. Coulson
Costume Shop . . . . .	Betty Williams
Lighting Department. . . . .	Mark A. Zimmerman
Sound Department . . . . .	Charles Korecki
Stage Management . . . . .	Bill Berry
Play Selection . . . . .	Ian S. Haberman
Women's Board Representative . . . . .	Margaret Dietz
Salon Series Coordinators . . . . .	Tom Abdoo & Sue Smith

*Ex-Officio from the Staff:*

Executive Director . . . . .	Elynmarie Kazle
Technical Director . . . . .	Alan Scott Ferrall
Producer of Youth/Family Productions . . . . .	Sean McConaha
House Managers . . . . .	John Cotter



## Our Generous Donors

*Did you know that the average cost, per seat, to produce a Weathervane show is \$32.85? Thanks to the generosity of the following individuals, corporations and foundations, the cost of your seat is \$20 or less! We gratefully acknowledge their support.*

### SUPER FOUNDERS (Gifts of \$10,000+)

City of Akron	Ohio Arts Council
Estate of Vaughn G. Austin	State of Ohio
Estate of Paul A. Daum	The University of Akron
The GAR Foundation	Weathervane Women's Board

### FOUNDER'S CIRCLE (Gifts of \$5,000+)

Akron Community Foundation	Charles E. & Mabel M. Ritchie
Mary B. & Dr. George L. Demetros Foundation	Memorial Foundation
Margaret J. Dietz	Sisler McFawn Foundation
John S. & James L. Knight Foundation	Lloyd L. & Louise K. Smith
John A. McAlonan Fund	Memorial Foundation
OMNOVA Solutions Foundation	

### PLATINUM MEMBERS (Gifts of \$1,000+)

#### INDIVIDUALS

David N. Ashe	Roy & Mary Hartz♦
Susan C. & Patrick T. Baker	Charlotte & Jim Horvath♦
Family of Roger G. Berk, Sr.	Elynmarie Kazle & Mark A. Zimmerman
Ann & Dave Brennan	

#### CORPORATIONS & FOUNDATIONS

Aircraft Braking Systems Corporation	Gay Community Endowment Fund
F.W. Albrecht Family Foundation	The Goodyear Tire & Rubber Company
Glenn R. & Alice B. Boggess Memorial Foundation	The Lehner Family Foundation
Brennan Family Foundation	Millennium Fund for Children
Bridgestone Firestone Trust Fund	Walter Mirapaul Foundation
Lisle M. Buckingham Fund of ACF	Laura R. & Lucian Q. Moffitt Foundation
Dominion East Ohio	The RC & Katherine Musson
FirstMerit / Akron	Charitable Foundation
	M.G. O'Neil Foundation

### GOLD MEMBERS (Gifts of \$500 - \$999)

#### INDIVIDUALS

David N. Ashe	Dr. & Mrs. Edward Koosed	Gregg A. Manes
W. Scott & Sandra Emerick	Leslie & Richard Lund	George Moxon II♦
Janet & Jim Heilmeier	David & Orlene Makinson	Mary & Mel Wolfman

#### CORPORATIONS & FOUNDATIONS

*A. Schulman	National City Bank
Michelson Foundation	*Summit County Internists, Inc.
Myers Industries, Inc.	

♦Denotes Board of Trustees





## Our Generous Donors continued

### SILVER MEMBERS (Gifts of \$250 - \$499)

#### INDIVIDUALS

Juanita & Chic Carlson	Dr. Jack & Libby Jacobs	Michael Russell
Mildred Collis	Mrs. Harvey Karam	Dr. Douglas & Jane Sanders
Frank C. Comunale	Mary Beth Kluge♦	Dr. Steven P. Schmidt
Susan & Michael Davis	Kathy & Doug Kohl	Dr. Susan D. Speers
Dr. Richard & Mary Beth Ellison	Shelley & Thomas Koutnik	Jack Steele♦
Helen & Chisna Fleming	Patricia Obenour	Martha Kaltenbach & Tom Trotter
Barry Friedman	Barbara B. O'Connor	Connie & Bob Velotta
Mary & William Glaeser♦	Judy & Roger Read	Libby & Jeff Wilson
Lillian L. Humidac	Helene & Bill Rogovy	

#### CORPORATIONS & FOUNDATIONS

Brockman, Coats, Gedelian & Co.	*GoJo Industries	*Zuckerman Consulting Group
*Cedarwood Companies	*Morris Berzon Fund of the	
*Davey Tree Expert Company	Jewish Community Board	

### PATRON MEMBERS (Gifts of \$150 - \$249)

#### INDIVIDUALS

David Ashe	Dr. & Mrs. Stephen A. Farkas	Leslie & David Nelson
Kathleen Ashcroft♦	Jon A. Fiume♦	Lucy J. Randles♦
Mary & Rollie Bauer	Diana & John Gayer	Dr. John M. Ream, Jr.
Curt Brown	Ellen & Karl Hay	Virginia A. Sayre♦
Carol Button	Jay Hershey	Charles Schreckenberger♦
Mr. & Mrs. James D. D'Ianni	William W. & Anne M. Lowery	Betty Watterson
Rozell R. Duncan, Ph.D.♦	William Manby	Pat & Leo Weill
Marie & Marc Dusini	Margaret & John McBride	Harold F. White

#### CORPORATIONS & FOUNDATIONS

*AAA - Akron Automobile Assoc.	Flexsys America	North Akron Savings
Akrochem Corporation	*Hitchcock Fleming & Assoc.	*Peters, Tschantz & Bandwen, Inc.
Akron Tool and Die	Infocision Management Corp.	*Smithers Scientific Services
*Amer Insurance	*Maynard Family Foundation	*Steere Enterprises
*Fifth Third Bank	*Mogen Real Estate	*Yoder Brothers, Inc.

### SUSTAINING MEMBERS (Gifts of \$100-\$149)

#### INDIVIDUALS

Dr. Miriam Agins	Dr. & Mrs. C. William Keck	John O'Neill
Doug & Mary Ann Bell	Dede Klein	Gloria T. Reich
Henry Bishop & Karen Wood	Richard & Judy Kotick	Cynthia Ross
Robert W. Briggs	Bruce G. Kriete	Lois & Paul Simmons
Patricia & James Burke	Carol Krueger	Sue & Richard Smith
Mrs. C.B. Dagilis	Margaret Lloyd	Jean & Ethel Soudry
Mrs. Carol A. Deeser	Mr. & Mrs. Gary Leidick	Mr. & Mrs. Edgar Steinmark
Patricia & Thomas Doak	Dr. Donald & Wendy MacKay	Thomas Stephan
Tatiana & Richard Harris	Virginia D. Moline	Dr. & Mrs. Robert Stone
Marilyn Heagerty	N. Joel Moran	James Switzer & Gretchen
Mary Ann Jackson	The Moushey Family	Laatsch
Carla & John Kachmar	Dr. George & Janet Nankervis	Paula & John Troche
Dr. & Mrs. Lawrence Kaye	Jo Ann Oelschlager	Mr. & Mrs. Edgar Steinmark



## Our Generous Donors continued

### SUSTAINING MEMBERS - Individuals Continged

Thomas Stephan	Mr. & Mrs. Jack Wigley	Dan & June Zeno
Dr. & Mrs. Robert Stone	Mona Wolfman	Laurie Zuckerman
Paula & John Troche	Dr. Jeff Yatsu	
Linda Waite	B.J. Zeigler	

#### CORPORATIONS & FOUNDATIONS

Business Interiors & Environments	*Hottle & Associates, Inc.	*SGS Tool Company
Holland Oil Company		*Sterling Jewelers, Inc.

### CONTRIBUTING MEMBERS (Gifts of \$75 - \$99)

#### INDIVIDUALS

Joseph Bolta	Bridget & Steve Dolin	Nancy & Harold Rex
Carol Boyd	Alan Scott Ferrall	Barbara & Jim Shriner
The Core Family♦	Mr. & Mrs. James Forster	Barbara & Russell Stevic
Trish & Stephen Crane	Shirley E. Jordan	Linda M. Wertz &
Jane & John DeYoung	Dona Bowman & Karlan Kameron	Robert E. Cunningham
Todd Dieringer	Thelma & Joseph Rapotec	

#### FRIENDS (Non-Voting)

Mary Jane Baron	Emily Audra Fleisher	Dr. & Mrs. John Saks
Bill Berry	George J. Gauthier	Jewell Cotter Sausser
Jeff Brinton	James Gilder	Sue & Joe Schaut
Richard Brockett	Ian S. Haberman	Jody & Todd Schweiger
Robert Dague	Harry E. Jackson	Pearl D. Sentelik
Rebecca DeBolt	David W. Kellogg	Janey & Howard K. Slaughter
Extra Stimulus Inc./Akrobiz.com	Marilyn & Bill Miller	Ludwig Stern
	Richard Oberdorfer	

### SPECIAL 100-HOUR MEMBERSHIPS

Maryanne & John Cotter	Dana North	Banno Rothman
Dede Klein	Helena Olee	Chris Simmons
Jo McGarvey		

#### IN-KIND DONATIONS

Martha Kaltenbach Trotter	Elynmarie Kazle	Tom Marshall
Cecilia Sveda	Alan Scott Ferrall	Tom C. Barnes
John Cotter	Drea Jean Brown	Betty Watterson
Richard Lund	Janis Harcar	John O'Neill
Jim Horvath	USITT	

\*Thank you for your early corporate support for 2006.

Weathervane Community Playhouse gratefully acknowledges **Allstate Giving Campaign, IBM, SBC, The Lubrizol Foundation, ExxonMobil Foundation, Merrill Lynch and State Farm Companies Foundation** for contributions made through matching gifts programs.

Weathervane Community Playhouse gratefully acknowledges **The Sisler McFawn Foundation, Akron Community Foundation, OMNOVA Solutions Foundation, Dominion East Ohio and The Millennium Fund for Children of the ACF** for contributions for Project STAGE presentations and Youth Outreach Programs..

Memorial Contributions were made to Weathervane Playhouse  
in memory of **Keith G. Cantine, Jr.** by

Joann & Jerry Hayes

Memorial Contributions were made to Weathervane Playhouse  
in memory of **Shirley Elaine Grandel** by

Margaret J. Dietz

Memorial Contributions were made to Weathervane Playhouse  
in memory of **Susan Moxon** by

Margaret J. Dietz  
Dr. & Mrs. C. William Keck


## Advertise for your company in Weathervane playbills for a full season September 2006 - August 2007.


Ad Space Reservations are now being accepted for  
the 2006-2007 Weathervane Playbill.


Call Janis Harcar


Director of Marketing & Development

330-836-2323 X16 for details.

 Weathervane Playhouse is handicapped accessible. Ramps are available to the front doors, auditorium and seating.

 Assistive-listening devices for the hearing impaired are available at the Ticket Office.

 Large-Type program inserts are available at the Ticket Office. These copies are not full playbills but contain information unique to this production. These inserts are photocopied and are available in limited quantity.

 American Sign Language interpretations are scheduled for selected Sunday performances.

 Ohio Relay System 1-800-750-0750 TDD. Call to have your ticket order placed.



*In the Bank One Visual Arts Gallery*

**First Week Performances:** **Debra Calhoun** has a Bachelor of Arts degree in Political Science and a Master of Arts degree in U.S. History, both from The University of Akron. She is a self-taught quilter who, in 1995, was artist-in-residence at both Hillcrest Elementary School and Portage Path Elementary School, followed in 1997 as artist-in-residence at King Elementary School. Most recently she has had solo exhibits at the Lucy Laney Craft Gallery, Augusta, Georgia, and at the Ponder Art Gallery at Benedict College in Columbia, S.C. Her work has also been featured at the Akron Woman's City Club, the Akron Art Museum, and Tomorrow's Treasures.

### Remaining Performances:

**The Photo Literacy Project -- Photosynthesis -- Me, My World and Me as a Woman in the World.** This collaboration brought together the talents of Akron's Project RISE, teaching artist **Anitra Redlefsen** and the young women of Safe Landing Youth Shelter. This special project was designed to enhance the literacy development of teenage girls experiencing a life transition and residing in local shelters, through the use of photography and journaling arts.

Through the process, the students were able to explore self-esteem, autonomy, decision making, problem solving, reflection and stewardship. Using a visual learning approach, the students practiced visual encoding, the study of translating the content and meaning of imagery, to gain a better appreciation of community.

This complex process enhances young people's literacy development by allowing the students to more consciously examine the ideas of Self, Community and the World around them through a camera lens. The girls' experiences and perceptions were then discussed in a group format and documented through journaling. This is the outcome of their process.

### Looking for the most talented young actors in Akron...

Our 2006-2007 mainstage season opener is *Over the Tavern* by Tom Dudzick, which requires four children (3 boys and 1 girl) between the ages of 10 - 16. Auditions will be held in the early part of the summer. If you are not on Weathervane's audition list, please fill out a volunteer card in the lobby so that you receive audition notices.



Community  
Cash Back Program  
"In Progress"

**2005-2006**

**HURRY! Program ends 3/25!**

SAVE YOUR ACME STORE REGISTER TAPES and bring them to the Playhouse. We'll collect them, turn them in and receive 1% cash back!

To be sure your tapes are valid, they must have the words **community cash back** at the bottom of the tape. Please **DO NOT TEAR THIS OFF**. No need to worry about the privacy of your credit card number; it is not reflected on the tape.

*Thanks for your help! We look forward to another successful season!*





# GOODYEAR

## TRUST IN OUR PERFORMANCE

GOODYEAR PROUDLY SUPPORTS THE  
**WEATHERVANE  
COMMUNITY PLAYHOUSE**



Weathervane

Community Playhouse

71st Season – 2005-2006 – Youth Production # 73

February 17 - March 5, 2006

With support from

**GOODYEAR**



by Sophocles

Translated by  
Dudley Fitts and  
Robert Fitzgerald

Directed by **Suzanne Graham**

Stage Manager  
**Kellie Hale**

Lighting Design by  
**Will Roth &  
Katherine F. Góytowski**

Costume Design by  
**Suzanne Graham**

Properties Design by  
**Linda Hale**

Scenic Designer/Technical Director  
**Alan Scott Ferrall**

*Antigone* is a Project STAGE production. We thank **The Sisler McFawn Foundation, Akron Community Foundation, OMNOVA Solutions Foundation, Dominion East Ohio** and **The Millennium Fund for Children of the ACF** for contributions for Project STAGE presentations and Youth Outreach Programs.

### ANNOUNCING...

## 2006-2007 Youth Productions

### Madeline's Rescue

Story by Ludwig Bemelmans

Adapted for the stage by Constance Congdon

Music by Mel Marvin

Musical -- July 29 - August 13, 2006

### JOSEPH and the Amazing Technicolor Dreamcoat

by Tim Rice and Andrew Lloyd Webber

November 24 - December 17, 2006

### Romeo & Juliet

by William Shakespeare

February 16 - March 4, 2007

Weathervane productions are sponsored in part by



Ohio Arts Council

Weathervane Community Playhouse, 1301 Weathervane Lane, Akron, OH 44313-5186  
Ticket Office: 330-836-2626 – Fax: 330-873-2150 – For staff Emails -- please see website  
[www.weathervaneplayhouse.com](http://www.weathervaneplayhouse.com)



## About the Play & Playwright

### The Play -- *Antigone*

Oedipus, the former ruler of Thebes, has died. Oedipus had given his kingdom to his two sons, Polynices and Eteocles, who agreed to alternate the throne each year -- but this arrangement has not gone as planned.

When Eteocles refuses to step down from the throne after his first year, Polynices attacks Thebes in an attempt to seize power. In the battle for Thebes, each brother dies at the other brother's hand. King Creon ascends to the throne, and he shows no mercy for the supporters of the late Polynices.

Antigone, daughter of Oedipus and sister of Polynices, seeks a proper burial for her slain brother, Polynices. Creon, however, forbids Antigone to bury her brother, declaring him a traitor to the state.

Antigone defies her uncle the king -- and the two enact a primal conflict between young and old, woman and man, individual and ruler, family and state, representing the courageous and self-sacrificing reverence for the gods of the earth versus the perhaps self-serving allegiance to the gods of the sky.

Echoing through Western culture for more than two millennia, Sophocles' *Antigone* has stood as a touchstone of thinking about human conflict and tragedy. It exemplifies such themes as the role of the divine in human life and the degree to which men and women are the creators of their own destiny. This exciting new translation of the play is extremely faithful to the ancient Greek text, eminently playable and poetically powerful.

For readers, actors, students, teachers and theatrical directors, this new translation of one of the greatest plays in the history of the Western world provides the best combination of contemporary, powerful language along with superb background and notes on meaning, interpretation and ancient beliefs, attitudes, and contexts.

### The Playwright -- Sophocles (c. 496-406 BCE)

Sophocles' work is considered the pinnacle of Greek tragedy. Born near Athens in 496 BCE in the town of Colonus, in his 90-year lifespan he witnessed the rise and fall of the Athenian Golden Age.

Sophocles was the son of a wealthy manufacturer. Despite a reported aversion to politics, Sophocles did play a significant role in Athenian social and political life. In his old age he was honored with an important advisory position in the Athenian government to help deal with the aftermath of the disastrous military campaign at Syracuse. He was also the father of two sons, one of whom went on to become a playwright.

Revered by modern scholars for his treatment of the individual and for the complex issues that his plays address, Sophocles was also revered by his contemporaries: he received the first prize for tragic drama over fellow dramatist Aeschylus at the drama festival (the City Dionysia) held in 468 BCE, when he was 28 years old. He wrote approximately 123 plays for the Athenian theatre, and won 24 festivals (and he placed second in every festival that he did not win).

Only seven of his plays, however, have survived intact. They are (in the order in which they are thought to have been written): *Ajax*, *Antigone*, *The Women of Trachis*,

continued at right



## Antigone Cast

Katie Markovich	Antigone
Jessi Hale	Ismene
Christina Stavale	Eurydice
Ryan Stevenson	Creon
Michael Rauh	Haimon
Scott Jones	Teiresias
Rosilyn Jentner	Sentry/Chorus
Angel Pay	Messenger/Chorus
Lilly Elani Romestant	Choragos
Julia Haines	Chorus
Rachel Stevenson	Chorus
Madeline Durante	Chorus
Emily Caroline Esker	Chorus
Mara Fragge	Chorus
Laura Belle Cordle	Chorus
Tyron Hoisten	Guard
Cameron Arias	Guard

Setting: Ancient Greece

There will be one 15-minute intermission.

\* Halin DB

**\*For your safety, we request that you remain seated until the house lights have come up at intermission and after the curtain call.**  
 \*The use of cameras, recording equipment and laser pointers is forbidden during this performance.  
 \*As a courtesy to fellow audience members, please make sure that cell phones and pagers are turned off during the performance.  
 \*Please do not bring food or drink in the auditorium.  
 \*NOTE: In case of an emergency in which the performance cannot continue, Calamity Vouchers will be issued for a future performance. Thank you.

About Sophocles continued...

*Oedipus the King*, *Electra*, *Philoctetes* and *Oedipus at Colonus*. From the fragments remaining, and from references to lost plays in other works, scholars have discovered that Sophocles wrote on an enormous variety of topics. He also introduced several key innovations, including ending the tradition of writing trilogies on connected topics at the City Dionysia, introducing painted background scenery, changing the number of speaking actors from two to three, and enlarging the chorus from 12 to 15 men.





## About Our Director

**Suzanne (Suzie) Graham** is a coordinator for the City of Akron with duties including downtown events such as the LeBron James Bikeathon, the Lock 3 Summer Arts Experience and Holidayfest. She also coordinates, writes and directs for the Ingenue Theatre Ensemble, the city's youth drama program. Her favorite aspect of working with youth is convincing them that they are capable of doing great things that people never would expect, and then seeing them realize that they are capable of doing things they never expected of themselves. She lives in Akron with her husband Aaron, two-year-old son Max and one year old daughter Zoe. She is very grateful for the opportunity to work with such a wonderful group of young people and volunteers, and would like to thank Sean McConaha and the Playhouse for inviting her to direct *Antigone*.

### Director's Notes

*Antigone's* story of the power of the human will is a timeless one -- whether in ancient Greece or on the street today, the struggles within *Antigone* are ever present. *Antigone's* challenge to the state, Creon's advocacy of the rule of the state and the dynamic power of public opinion are issues still questioned today. The notion of "patriotism" as silence and the extent of civic power over human choice are both as much alive now as they were for Sophocles. What does it say for the growth of humanity if we are still wearing "masks" of submission as a response to intimidation and fear after so many centuries? Our masks today are subtler. Comfort and ignorance are the graceful faces that we show one another, our excuses for our inaction against the wrongs of our society -- excuse is simpler than apology, defense is easier than opposition. Do we as a society acknowledge our *Antigones* and learn from their sacrifices? Or do we watch in silent, complacent tears as they march to their graves?

## H.O.T. Summer Camps 2006

It won't be long before you begin to plan your summer activities. Weathervane's summer camps are **Hands On Theater** and fun! We offer three summer sessions in our education facility. In a comprehensive theater-training program led by theater professionals, students learn about acting, improvisation, stage directions, auditioning and more. (*Register online at [weathervaneplayhouse.com](http://weathervaneplayhouse.com)*)

### H.O.T. Session 1

**June 18 - 29, 2006**  
6- to 8-year-olds

### H.O.T. Session 2

**July 2 - 13, 2006**  
8- to 10-year-olds (no class 7/4)

### H.O.T. Session 3

**July 16 - 27, 2006**  
10- to 12-year-olds

### Audition

**Workshop**  
Students 13+ years of age  
**June 18 - 22, 2006**

### Musical Theater

Students ages 9 - 12  
**June 18 - 22, 2006**

### Summer Stock

Students 13 years of age and up  
Previous theatrical experience required  
Special performances Aug. 18 & 19  
Limited to 18 acting and 4 technical positions

**August 6 - 19, 2006**

9 a.m. to 5 p.m. Monday - Friday

The production will be Edgar Lee Master's *Spoon River Anthology*.



## Welcome from the Executive Director

Welcome to Weathervane.



What do kids today want? What do they need? What will help them grow, learn about the world, move them toward adulthood but not compromise their innocence? As the parent of a tweener myself, I am faced with this question every time my son turns on the television or asks to see a movie. More than once over the past few months a volunteer has stopped me to ask why we are doing a show like *Antigone* for the spring teen show. Why not something lighter, more comedic?

The answer: we select dramas like *Antigone* because they exemplify the power of live theater. And just maybe experiencing these stories together helps us find a way to begin to understand the tough world in which our young people, in fact, grow up. Their world is a far cry from my childhood in the '60s.

It is clear to me that some kids today are numbed by violence -- it's on TV, on the 'net and in the news daily. It seems that sometimes they see it more as acting out than real crime. Recently the local news was full of the Jessica Coleman story. Jessica had a baby at fifteen. Afraid of the consequences and feeling she had nowhere else to turn, she murdered the newborn, saying she wanted to "send him back to heaven." She did not tell anyone about this for five years. Finally she did tell and the consequence was a trial for murder. At the conclusion of the trial, Jessica, now age 22, was hoping for probation but received six years in prison. The judge who sentenced her said it did not matter how old she was, being 15 or 50 does not permit us to commit crimes. When some teens get in real trouble, they assume that mom or dad will get them off, write a note, not hold them accountable for their actions or the judge will just give them probation.

A play like *Antigone* provides us an opportunity to share a story about the consequence of bad choice. Its classical setting allows us to consider a tragic situation from a distance, to examine it and to renew our own belief about right and wrong. And, perhaps more importantly, it gives us an opportunity to discuss the right and wrong choices these characters make with our children. Live theatrical experiences both dramatic and comedic are a keys to a healthy society. And in raising our children -- our future leaders -- discussing the tragic consequences faced by the characters in *Antigone* allows us an important opportunity to reinforce our values and to redefine for our kids and for ourselves the complexity of the choices we make as humans, be they for good or for ill.

It is an opportunity for us all. Don't miss it. Start the conversation.

*Elaine Kagle*



## Cast Callboard

**KATIE MARKOVICH** (Antigone) is a 10th-grader at St. Vincent-St. Mary High School. Her previous Weathervane experiences include Jo in *Little Women* and Violet in *Charlie and the Chocolate Factory*. Other work includes *Macbeth*, *Dr. Faustus* and *As You Like It!* with Ingenue Theatre. A talented playwright, Katie had her work, *The Kingdom that Forgot How to Read*, produced at Miller South School.

**JESSI HALE** (Ismene) is making her second appearance on the Weathervane stage, having appeared as a wife in 2004's *Joseph*. Her past backstage work at the Playhouse includes *Snow White and the Seven Dwarfs*, *The Rocky Horror Show* and *Little Women*. Jessi is a junior at Firestone High School and has been seen on stage in its productions of *Twelfth Night* and *I Hate Hamlet*.

**CHRISTINA STAVALE** (Eurydice) is making her Weathervane debut. Her other stage work includes *A Midsummer Night's Dream*, *Hello, Dolly!*, *A Christmas Carol*, *The King and I* and *Brigadoon*. A senior at St. Vincent-St. Mary High School, she is a member of the National Honor Society and the International Thespian Society. She plans to pursue a degree in journalism with the hope of becoming a theatre critic.

**RYAN STEVENSON** (Creon) is a 12th grade home-schooler from Fairlawn. Creon is his first non-Shakespearean role. His prior credits include Laertes in *Hamlet* and Conrade in *Much Ado about Nothing* at Weathervane. Ryan has also played Macbeth in a student film project that he co-directed. Ryan's interests include English literature, classical studies, history, mythology, philosophy, music and fencing.

**MICHAEL RAUH** (Haimon) is a freshman at Firestone High School and is pleased to be appearing in his second show

at Weathervane. Michael was last seen as Treplev in the 2005 Summer Stock production of Chekhov's *The Seagull*.

**SCOTT THOMAS** (Teiresais) will be graduating in the spring from St. Vincent-St. Mary High School where he serves as the special events coordinator of the Drama department. Scott's stage work includes *A Little Princess*, *Hello, Dolly!*, *A Midsummer Night's Dream* and *A Christmas Carol*. His interests include running, dance and volunteering at Playhouse Square in Cleveland.

**ROSILYN K. JENTNER** (Sentry/Chorus) is new to the Weathervane stage. A 9th grader at Firestone High School, Rosilyn has performed in two separate versions of *Twelfth Night* and in *Words, Words, Words* for the One-Act Play Festival at Firestone. Her interests include performing and laughing.

**ANGEL PAY** (Messenger/Chorus) is an 8th-grade honor roll student at Litchfield Middle School. She previously appeared on stage in *Mother Goose* at Miller South School for the Visual and Performing Arts.

**LILLY ELANI ROMESTANT** (Choragos) is a 7th-grader at Miller South School in Akron. She has performed in *The Kingdom that Forgot How to Read* and is a member of the Commedia dell'arte troupe at school. Lilly also performed in *The Nutcracker* this past year at the Akron Civic Theatre. Her interests include singing, writing and social studies.

**JULIA HAINES** (Amelotte) is an 8th grade home-schooler whose interests include reading and graphic design. She has attended drama camp at Cuyahoga Valley Christian Academy for four summers and has performed in productions of *Comedia Delight* and *Sinbad* at Aurora Community Theater and *Snow White and the Seven Dwarfs* here at Weathervane.



## Cast Callboard Continued

Julia enjoys dancing, movies, reading, web design and volunteering at Hattie Larlham.

**RACHEL STEVENSON** (Chorus) is a 10th grade home-schooler from Fairlawn making her stage debut in *Antigone*. Rachel's interests include marine biology, geology, Shakespeare, filmmaking, journalism, photography, swimming, playing the clarinet and piano and scuba diving.

**MADELINE DURANTE** (Chorus) has been involved with The Ingenue Theatre Ensemble since 2002, appearing in its productions of *Dr. Faustus*, *As You Like It!*, *Alice* and *Gardens of Olympus* to name a few. A sophomore at Firestone High School in the International Baccalaureate program, Madeline was the MVP for the Junior Varsity Tennis team and enjoys skiing.

**EMILY CAROLINE ESKER** (Chorus) was last seen on the Weathervane stage in *The Crucible*. Her other acting credits include *The King and I*, *The Snow Maiden*, *Hello, Dolly!*, *A Midsummer Night's Dream* and *Joseph*. Emily is a senior and active in the drama program at St. Vincent-St. Mary High School.

**MARA' FRAGGE** (Chorus) is a sophomore at Copley High School where she has appeared in *The Great High School Whodunit* and *A Midsummer Night's Dream*. Her role in *Antigone* marks Mara's Weathervane debut.

**LAURA BELLE CORDLE** (Chorus) has been on stage at Weathervane in productions of *Joseph* and *The Crucible*. A freshman at Firestone High School, Laura has also performed in *The Music Man* and *The Wildflowering of Chastity*. Her hobbies include singing, dancing and snowboarding.

**TYRON HOISTEN** (Chorus) is making his stage debut in *Antigone*. An 8th grader at Hyre Middle School, Tyron has taken acting classes at The Ohio State University and loves to act, draw and design costumes.

**CAMERON ARIAS** (Chorus) loves creative writing and received a Disney Literary Award for his work. A junior at St. Vincent - St. Mary High School, Cameron has appeared in school productions of *Hello, Dolly!*, *A Midsummer Night's Dream* and *The King & I*. He loves to sing.



## Backstage Callboard

**KELLIE HALE** (Stage Manager) has worked on several backstage crews here at Weathervane but this will be her first time as a production stage manager. Kellie's acting/crew experiences include *Grease*, *Annie*, *Charlie and the Chocolate Factory*, *Snow White and the Seven Dwarfs*, *Little Women* and *Joseph*. She is an 8th grader at Litchfield Middle School.

**LINDA HALE** (Properties Design) is a married mother of four and a self-employed

web developer. She volunteers for the Theatre program at Firestone High School and Western Reserve Playhouse. For Weathervane she has designed props for *The Rocky Horror Show* and *Little Women* and served on the costume crew for three seasons of *Joseph and the Amazing Technicolor Dreamcoat*.

**WILL ROTH** (Lighting Co-Design) is the owner and operator of AA Sound and Lighting Inc., an Akron-based sound, light-



## Backstage Callboard Continued

ing, staging and video production/rental/installation company. Will has provided services for national entertainers, political figures, orchestras, operas, trade show and corporate events across the United States and even a nightclub in St. Petersburg, Russia. He was the systems specialist for the technical services department of Sea World of Ohio. Will is currently the production manager for The Vocal Group Hall of Fame and, someday, when he grows up, hopes to be just like his hero, Charles Korecki.

**KATHERINE F. GOYTOWSKI** (Lighting Co-Design) is currently a senior at Kent State University, will be graduating in May with a Bachelor of Science degree from the School of Architecture and Environmental Design and will be graduating in May with a B.F.A. degree. She works for the design firm, Business Interiors & Environments. A native of Steven's Point, Wisconsin, Katherine has no pets, children or spouse and plans on keeping it that way. Her goal is to provide exhibition and lighting design for the world's greatest museums.

**ACTORS' SUMMIT**  
Professional Theater  
in Historic Hudson

*Midsummer  
Night's Dream*

**March 23 -  
April 9**  
With Special  
Daytime School  
Matinees

Actors'  
Equity  
Association

[actorssummit.org](http://actorssummit.org) 330-342-0800



## Production Team Members & Crews

**Alan Scott Ferrall -- Technical Director**

Kathy Kohl -- Assistant Technical Director

### SET CONSTRUCTION

Ruth Richardson	Tom Marshall
Erin Katz	Todd Dieringer
Kevin Ford	Kristopher Sperry

### LIGHTS

Connor Mathis	Derric Nolte
Alison Cooper	

### COSTUMES

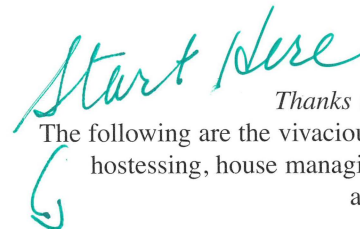
Betty Williams	Susie Stech
Dorothy Kies	Cindy Hartline
Henrietta Cook	Randie O. Sass
Karen Burrige	

### PROPERTIES

Leah Magnus	Shelly Haines
Mary Ann Zavertnik	

### ACKNOWLEDGMENTS

Cue Fleming -- Archivist  
Bill Van Nostran -- Publicity Volunteer



*Thanks to Our Hard-Working Volunteers*

The following are the vivacious volunteers who assisted you in many ways including hostessing, house managing and/or staffing the boutique, concession stand and office during *Crowns*.

Meena & Puru Agrawal	Jill Forster	Barbara O'Connor	Helen Tschantz
Sue Baker	Sandra Harding	John O'Neill	Lynn Vanca
Patrice Bechtol	Marilyn Heagerty	Marci Paolucci	Linda Waite
Jan Budai	Linda Heath	Bess Raines	Betty Watterson
Karen Burrige	Betty Jacobs	Ruth Richardson	Pat Weill
Henrietta Cook	Debra Sharp Katos	Danielle Rusen	Betty Williams
Wendy & Ralph Cooley	Leslie & Richard Lund	Randie & Brian Sass	Mary & Mel Wolfman
Thelma Coss	Linda Mateen	Susan Sawyer	Gen Woods
John Cotter	Claudina Miller	Lois Simmons	B.J. Zeigler
M.J. Coulson	Jerry Mirman	Sue & Richard Smith	Nancy Zeigler
Beverly DeSanzo	Sheila Motter	Amy Snell	
Margaret Dietz	Lois Murray	Ethel Soudry	
Helen Fleming	Pat Obenour	Susie Stech	





Next On Our Stage

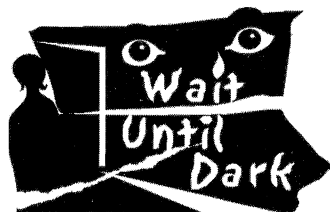


## Lend Me A Tenor

Comedy by  
Ken Ludwig  
March 22 -  
April 9, 2006

Director  
Nancy Cates

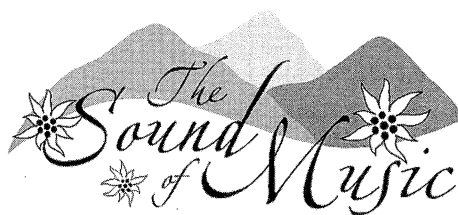
You'll roar with laughter at this comic farce in which Tito Morelli, a world-famous opera tenor, and a group of high-society types, are thrust into desperately comic situations, mistaken identities, slamming doors and hilarious shenanigans.



by Frederick Knott  
April 26 - May 14

Director: Sarah May

Suspenseful chills reign supreme in this sinister thriller about a brave blind woman, a homicidal criminal and a drug-stuffed doll.



Musical by Rodgers & Hammerstein  
June 14 - July 16

Director Kevin Joseph Kelly  
Musical Director Heidi Herczeg  
Choreographer Martin Cespedes

The hills of the Merriman Valley come alive with this beloved tale of love against all odds. Maria, who wants to become a nun, is sent to serve as a governess to a widowed naval captain and his seven unruly children. As she wins the hearts of the children, her heart discovers its own budding love.

AUDITIONS  
Sunday, April 9  
Monday, April 10

**Attention K-12 Teachers:** discount tickets are available for the following productions - *Lend Me a Tenor*, *Wait Until Dark* and *The Sound of Music*. Please inquire at the box office for further information. *Discount not available on previously purchased tickets.*



More Coming Events

April 3 & 4 -- Step-Up Production -- *Streets of Home* (formerly *Immigrant*) by Chuck Keiper and Bonnie Eavers. 7:30 p.m., Tickets \$10 -- open seating.

May 10 -- Women's Board **New Membership Tea** at 6:30 p.m. features **Carol Starre-Kmiecik** who, for the evening, will be Cleveland's pre-eminent TV journalist, Dorothy Fuldheim.

Join us after the show!



New Hours:  
Sunday - Thursday 11:00am - 10:00pm  
Friday & Saturday 11:00am - 11:00pm  
Closed on Mondays

See our ad on page one of this program.



Including Weathervane Playhouse in your philanthropic plans helps us to continue producing theater that enriches our city and can provide you with tax advantages. Call us at 330-836-2626 for more information.

Weathervane Playhouse Staff  
Elynmarie Kazle -- Executive Director

Keith D. Campbell  
Supervisor, Front-of-House  
& Patron Relations

Alan Scott Ferrall  
Scenic Designer/Technical Director

Janis L. Harcar  
Director of Marketing & Development

Sean McConaha  
Dir. of Ed./Producer Youth Prod.

John A. Cotter  
Business & Public Relations Assistant

Kathy Kohl  
Assistant Technical Director

Caroline Klein  
Bookkeeper

Dreajean L. Brown  
Data Services Manager

1928  2006

Coach House Theatre  
proudly presents our  
2005/2006 Season

proof

by David Auburn  
September 8-24, 2005

B R O A D W A Y

B O U N D

by Neil Simon  
November 3-19, 2005

Who's Afraid of  
Virginia Woolf?

by Edward Albee  
January 19-February 4, 2006

PICASSO AT THE  
LAPIN AGILE

by Steve Martin  
March 23-April 8, 2006

MURDER ON THE NILE

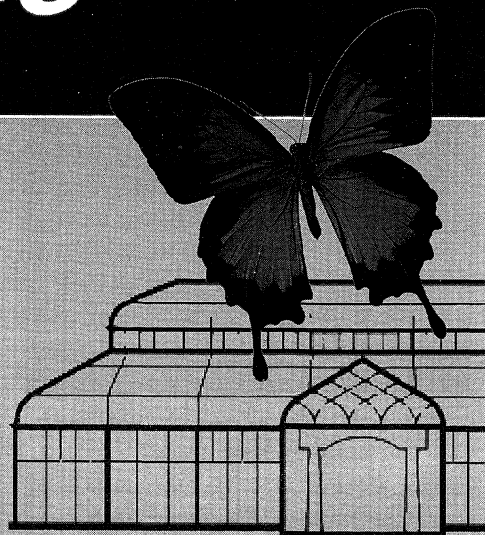
by Agatha Christie  
June 1-24, 2006

330/434-7741

732 West Exchange Street  
all titles and dates are subject to change

# Butterflies in Flight!

Northeast  
Ohio's  
largest free-flying  
exotic butterfly  
exhibit.



## The Corbin Conservatory Through Dec 30

Media sponsors include PBS 45 & 49;  
89.7 WKSU-FM; Ohio Magazine;  
WMVX Mix 106.5; PAX23/TV3;  
90.3 WCPN Ideastream

714 North Portage Path • Akron  
330-836-5533  
www.stanhywet.org

**Stan  
Hywet**  
HALL & GARDENS



...continues to present the

## "Best of the Best" in 2005-2006

**Imani Winds with  
Paquito D'Rivera, clarinet**  
Tuesday, September 27, 2005 • 8 pm

**International Sejong Soloists with  
Eugenia Zukerman, flute**  
Tuesday, October 25, 2005 • 8 pm

**Olga Kern, piano**  
Thursday, February 2, 2006 • 8 pm

**The Cleveland Orchestra with  
Osmo Vänskä, guest conductor**  
Sunday, February 26, 2006 • 3 pm

**Frederica von Stade, mezzo-soprano  
& Samuel Ramey, bass**  
Tuesday, March 28, 2006 • 8 pm

**Tokyo String Quartet**  
Tuesday, May 9, 2006 • 8 pm

All concerts are at E.J. Thomas Hall, The University of Akron; pre-concert talks are held one hour prior to performance time. For more information or a detailed season brochure, call the Tuesday Musical office.

www.tuesdaysmusical.org  
**330-972-2342**

## MAGICAL THEATRE COMPANY

Professional Theatre for Young Audiences & Families

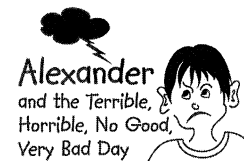
*Treasures await you this season...*



Dec. 2 - 18, 2005



Jan. 27 - 29, 2006



May 12 - 21, 2006

**330/848-3708**

565 W Tuscarawas Ave • Downtown Barberton

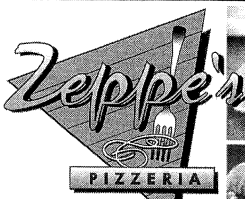
*Weathervane Playhouse  
thanks  
Tiffany's Bakery  
for the beautiful opening  
night cakes.*



**Wedding Cakes**

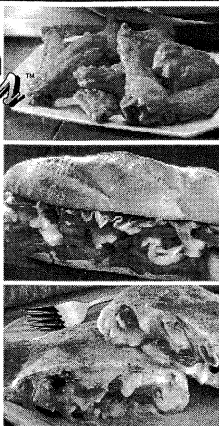
*Specializing in Birthday Cakes*  
330-753-0017  
2176 Romig Road  
Akron, OH 44320

**PIZZA PASTA SUBS SALADS  
WINGS CALZONES**



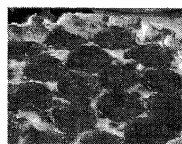
**PASSIONATE  
ABOUT PIZZA™**

Best wishes on your  
2005 season  
Zepp's Pizzeria in The Valley  
1676 Merriman Road  
(330) 836-6000



**X-LARGE PIZZA**

**\$9.99**



X-Large 12-cut  
Traditional Pizza  
with 1 Topping



CODE WP100 Not valid with any other offer. This coupon is available  
for pick-up or delivery at The Valley location only. Limited time only.

**Supporting inspirational performances  
delivered by exceptional people.**

www.brunercox.com



At Bruner-Cox LLP, we believe the expertise,  
integrity and continuity of our people  
allow us to deliver innovative accounting  
and consulting solutions to every client  
relationship.

Experience the value of our people.

**BRUNER-COX LLP**

Business Consultants & Certified Public Accountants

**Our people. Your solution.**

AKRON & CANTON

An independently-owned member of the RSM McGladrey Network



**Greystone Hall & Catering**

A fine dining experience for any event  
Featuring the Captain's Lunch Tues. - Fri. 11:30 - 1:30 p.m.

103 S. High Street

Downtown Akron

330-761-1950



Daily Delivery to Hudson and Surrounding Area  
European/Holland & Tropical fresh Cuts brought in Daily  
Gourmet Fruit Baskets, Goodie Baskets, Balloon Bouquets  
Custom Dried & Silk Arrangements for Home & Office  
Blooming Garden Baskets, Green Plants, Plush Animals

Monday - Saturday 9 - 7 • Sunday Noon - 6

330.650.1366 or 330.656.3676 or

800.795.1366

12 Clinton St. • Hudson • At First & Main

www.thegreenhouseflorist.com  
Gregg Lauck, Proprietor

**at Stinaff's  
the spotlight  
is on**



**Stinaff's**  
PRINTING FOR BUSINESS SINCE 1935

44 S. Summit St. • Akron, OH 44308  
330-434-2106 • Fax 330-434-9376

open daily all year



**encore!**

*some  
performances  
simply demand  
applause*

**Donzell's**

Greenhouses • Nursery • Garden Center • Landscape • Floral • Seasonal Design  
937 East Waterloo Rd • Akron • Ohio 330.724.0505



*Sacomin's  
SINCE 1932*

Dinner before or after the show.

Minutes from

**Weathervane Playhouse**

**Restaurant - Deli - Wine Shoppe**

**Banquets - Catering**

1561 Akron-Peninsula Road

(330) 923-7999





## Volunteering at Weathervane

Weathervane began as a volunteer organization and continues its growth thanks to the time and talent that members of our community invest in it. Our on-stage performers have worked long and hard to earn your applause. But their work is supported by many other unseen men and women who've helped build and paint sets, run the lights and sound, make sure that properties and set dressing items are in their proper places and do other backstage labor from stage managing to costuming and make-up. Supporting those who are actively involved in putting on each show are still more volunteers who usher, house manage, sell tickets, keep our office running and serve on our Board of Trustees, Board committees, Production Board and Women's Board.

Their spirit is the backbone of our continuing operations, a valued support on which our professional staff relies.

Each month, we acknowledge the outstanding Volunteers of the Month in our lobby, but those volunteers represent all who commit their time and interest to create a great theater experience for everyone who's come to see this show.

If you have friends or relatives who volunteer generously at Weathervane, we hope you'll take a moment to thank them for their help and their support of the cultural enrichment of our community. Better yet, join them! Call us and we'll help you win your own share of the applause for a "jolly good show," an experience that offers unique challenges with every performance.

### Share the Annual Chanticleer Celebration

**Let's talk Chanticleer!** Shortly after the final production of each season (August 19, 2006), Weathervane volunteers, subscribers and friends share an exciting awards banquet and party to acknowledge outstanding performances by performers and technical volunteers. And, if you have seen all of the six main-stage productions, you are eligible to be a judge!

The top performers are awarded rooster statuettes -- Chanticleers -- in recognition of their work, as voted by Chanticleer "judges." It's a great night to get together, share hopes, fun and festivities and is open to all.

Awards are presented for outstanding lead performances by a male or female in a drama or comedy, outstanding support performances, and outstanding lead and support in a musical, as well as choices in technical achievement. Chanticleers are also awarded for properties, lights, costumes and sound design, plus best production of the season. In addition to performance and production awards, the event also recognizes the Top 25 outstanding volunteers of the season. We welcome you to take part in the biggest nail-biting party of the year. Make sure to pick up your ballot at the end of the season and join us!



**Supporting Our Community Through  
Education, Research, Service.**

[www.neoucom.edu](http://www.neoucom.edu)



## Volunteer Responsibilities

*Here's a quick introduction to the responsibilities volunteers undertake to make our shows work. If you'd like to try your hand at any of these jobs, please call us. We'll help you learn! Volunteers with 100 hours or more of service are eligible for a special Weathervane membership!*

**\* Stage Management** Duties include assisting the director throughout the rehearsal period, calling cues, keeping backstage safe and orderly, and coordinating the technical needs of the show with the actors. A great opportunity for those who enjoy planning, communicating and taking charge. Once the director's work is done, it's the Stage Manager who runs each performance.

**\* Set Construction** Use your building skills, carpentry or painting techniques to help make illusion come to life. Help is needed days and evenings.

**\* Costumes** Designers and workers are vital. We invite skilled and unskilled seamstresses to make or alter costumes, create patterns, care for costumes during a show and keep our wardrobe department organized.

**\* Lighting** Experience is a plus, but you can learn by assisting others who know computers and electrical requirements. We'll train eager volunteers to help hang, focus and add color to lighting instruments. We'll also teach you how to run the light board and follow spots. *Nobody can see the show without you.*

**\* Sound** Create the music and sound effects tapes that enrich the aural envi-

ronment for each show or add "live" backstage sound. Run the sound system for technical rehearsals and productions.

**\* Properties** All the items that help "dress" a set and all those used by actors in rehearsal and performance (from tea sandwiches to "deadly" weapons and "shattering" windowpanes) must be borrowed, built or cooked. Many volunteers are needed to work on each performance.

**\* Office Volunteer** If you enjoy dealing with the public, we can use your help during office hours and on show nights to assist in taking money and answering the phone to take reservations. You may also help with mailings, work with staff, and greet customers and visitors.

**\* Ushering** Welcome audience members with your smile, show them to their seats, pass out programs, and serve refreshments at intermission. Your help is always welcome.

**\* House Manager** This representative greets the audience, tears tickets and guides theater-goers to ushers for seating. You'll work with the stage manager to coordinate the timing of intermissions and remain in the lobby throughout the show to handle any emergency.

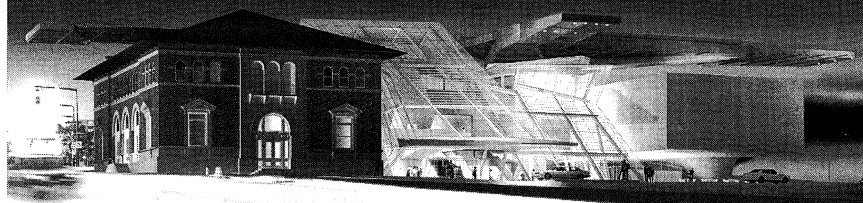
## Weathervane Community Playhouse

is a proud member of



**Ohio  
Community  
Theatre  
Association**

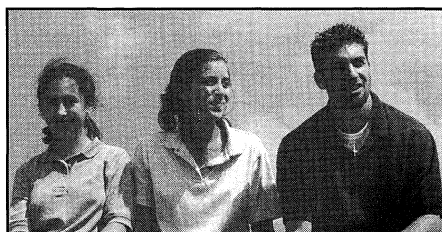
## The New Akron Art Museum



## Coming Soon Akron Art Museum

330. 376. 9185

[www.akronartmuseum.org](http://www.akronartmuseum.org)



Lawrence School students come from over 9 counties and 60 communities... **including yours.**

*Lawrence School is a college preparatory day school serving bright students in Grades 1-12 with learning disabilities and attention deficits*



### LAWRENCE SCHOOL

1551 E. Wallings Road in Broadview Heights  
[www.lawrenceschool.org](http://www.lawrenceschool.org) 440-526-0717

COMING 2007: Lawrence Upper School (grades 7-12) moves to Sagamore Hills



## Luigi's

"An Akron Tradition Since 1949"

- Award Winning Food
- Casual Dining
- Old World Elegance

Featuring Our Famous Homemade

- Pizza
- Lasagna
- Antipasto

### OPEN 7 DAYS

105 N. MAIN ST.

## 330-253-2999

# Vacations Made Easy!

Looking to get away from it all? AAA Travel has a variety of romantic cruises and an endless selection of trips to exotic destinations around the world! No matter the occasion, we'll find a vacation package that fits your every need. And if you have a question, we're just a phone call away. Give AAA Travel a call today, or look us up on the web at [www.aaa.com](http://www.aaa.com)!



**Akron Auto Club**

Travel With Someone You Trust.®

**Downtown**  
330.762.0631

**Hudson/Hudson Plaza**  
330.650.6727

**Fairlawn Town Centre**  
330.867.0694

**Cuyahoga Falls**  
330.923.4826

**Ellet/Eastgate Plaza**  
330.798.0166



[www.aaa.com](http://www.aaa.com)



## Who Gets On Stage?

Our volunteer performers come from throughout greater Akron and northeastern Ohio. They've committed themselves to four or more weeks of rehearsals plus performances. Their greatest reward is your applause.

Many performers come with substantial theatrical experience. Others are new to the stage. Auditions are open to all and our non-traditional casting policy opens the way for many performance opportunities. Except in cases where race, gender, age or disability is essential to the play, all roles are cast on the basis of talent.

Local newspapers carry audition dates and times or call Weathervane at 330-836-2626 to be added to the audition mailing list. Some directors prefer to set appointments for audition times and may ask that you come prepared with a brief

monologue, improvisational subject or musical number. Copies of plays scheduled or audition scenes are often available for a nominal deposit.

When you arrive at the theater on audition nights, you'll learn about the rehearsal and performance schedule. You may also register as a production volunteer if you're interested in learning about the technical opportunities in the show.

You may be asked to return for callbacks and will be notified of the director's cast selection as soon as possible. Please note that if you don't win the role you've wanted so badly, it may not necessarily reflect on your talent. The director's choice of cast members must take many factors into account to develop the proper "relationships," style and reality of the ensemble. Don't be discouraged.

### *Beware of the Dreaded No-Show*

Have you ever seen empty seats at a sold out sporting event or concert? Weathervane has the same problem. Subscribers who may have exchanged from another performance wonder why they weren't given those prime empty seats for the evening.

When you buy a subscription, you are promising to come to the theater for that ticketed performance and we hold your seat(s). This makes it impossible to tell if a performance is ever really sold out and annoys other ticket buyers who see that they could have been seated in a better spot.

*Subscribers: Please call the Ticket Office at 836-2626 if you will not make your ticketed performance. Thank you.*

### *Weathervane Traditions*

**Meet the cast** Many cast members spend a few minutes in the lobby area to meet and greet friends after performances. It's your chance to thank them for their performance.

**Intermission Tea** is served with our compliments by our volunteers. Soft drinks are available at a nominal cost.

**Opening Night Receptions** welcome audiences on Main Stage first Friday performances. We provide light refreshments after the show so you can share in the celebration.

**For your sweet tooth** snacks are available for purchase before the show and during intermission. Refreshments (other than water) are not permitted in the auditorium.



## Theatre Education

### *Youth Education*

Weathervane offers professionally taught classes in acting, stagecraft, musical theatre and improvisation for children up to age 18. Fall and spring classes are held on Saturdays and two-week Hands on Theatre (H.O.T.) workshops are planned throughout the summer. The cost is minimal with a limited number of scholarships available and discounted fees for Weathervane members.

Children may also audition for roles in many productions. Casting is not dependent upon class enrollment. Participation is an extension of valuable training in every facet of production from the audition process to technical and performance experience. Family members may also have learning opportunities by participating in such productions.

Weathervane works with area schools by providing outreach information and study guides as part of our Project STAGE© program, which brings public and private school students to see as many as five productions each season. This season, *Much Ado about Nothing*, *Crowns*

and *Antigone* will be featured in the Project STAGE© events. Tickets are \$8.

For information about classes or audition schedules for Youth Productions, please call our Director of Education at 330-836-2323.

### *Adult Classes*

Professionally taught adult theatre classes have included classical drama, improvisation, scenic design, stage lighting and directing. These classes help actors expand their performance and public speaking skills. Look for new schedules for classes periodically.

### *Learning On the Job*

Every production participant becomes part of Weathervane's continuing education process. You'll learn from more experienced volunteers who share the creation of production and performance. If you don't have time for structured classes, sign on to become a crew member or performer. We'll help you expand your knowledge of backstage and onstage responsibilities.



## The Pathway to Quality Education

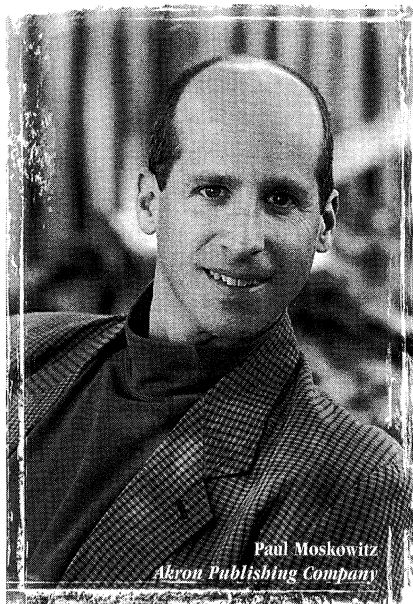
Preschool through Grade Eight

2315 Ira Road in Bath, Ohio near Hale Farm 330-666-1118 Visit our Web site at [www.oldtrail.org](http://www.oldtrail.org)





# Why is this man smiling?



*Because his customers are too.*

If you haven't been smiling lately, please call Akron Publishing Company for your next graphic design or custom publishing project. We design and produce advertising, brochures, direct mail pieces, customized magazines, catalogs, books and more. Give us a try ... you'll be *happy* you did.

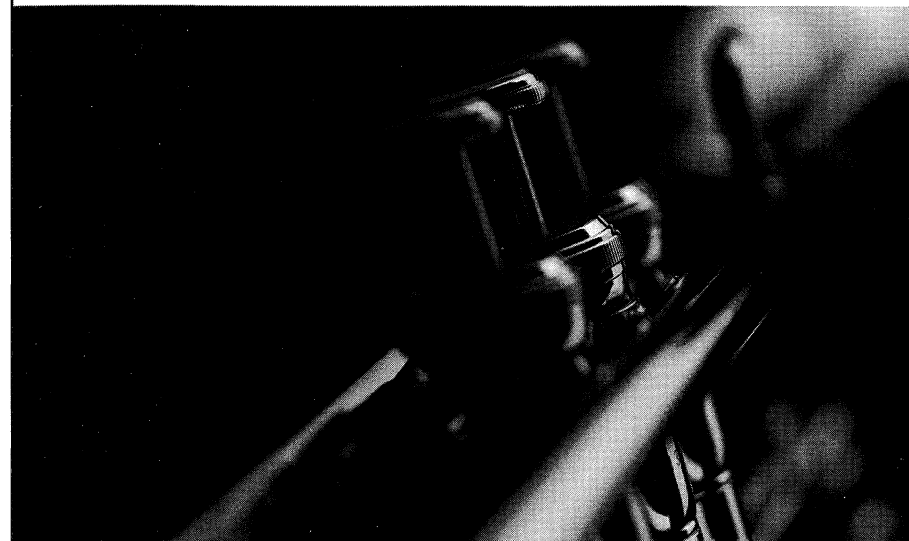
**AKRON**  
PUBLISHING COMPANY

phone: 330.929.2703 ▲ fax: 330.923.0856

[www.akronpublishing.com](http://www.akronpublishing.com)  
[www.everythingakron.com](http://www.everythingakron.com)

*A really good custom publishing and graphic design firm.*

**The perfect blend of skill,  
talent and collaboration.**



At KeyBank, we're proud to support the Weathervane Playhouse in it's display of skill and talent. And we're proud to pool our skills to bring you financial services that support your talents.

**KeyBank**

**1.800.KEY2YOU®**  
**Key.com**

---

**Achieve anything.**

Key.com is a service mark of KeyCorp.

CELEBRATING

# 40 Years

*Ohio Arts Council*

1965 - 2005

40 Years of Strengthening Ohio Communities  
Culturally, Educationally and Economically.

727 East Main Street  
Columbus, OH 43205-1796  
614/466-2613  
www.oac.state.oh.us

Be in the know by visiting

**ArtsinOhio.com**

For thousands of performances and events, festivals and exhibitions that are sure to move you, visit ArtsinOhio.com — an easy to use website that allows you to search by location, interests, dates and more.

*Have Your Wedding on*

## BROADWAY

**WEDDING RECEPTIONS**

Starting at **\*\$25.00 pp+**

\*Price does not include Bar service, tax or service charge. Prices subject to change.

**HOTEL ACCOMMODATIONS**

**CROWNE PLAZA**  
HOTELS • RESORTS

**QUAKER STATION**

**HISTORIC QUAKER SQUARE • DOWNTOWN AKRON**  
**135 SOUTH BROADWAY • AKRON, OHIO 44308**  
**(330) 253-5970 • www.quakersquare.com**

Quaker Station

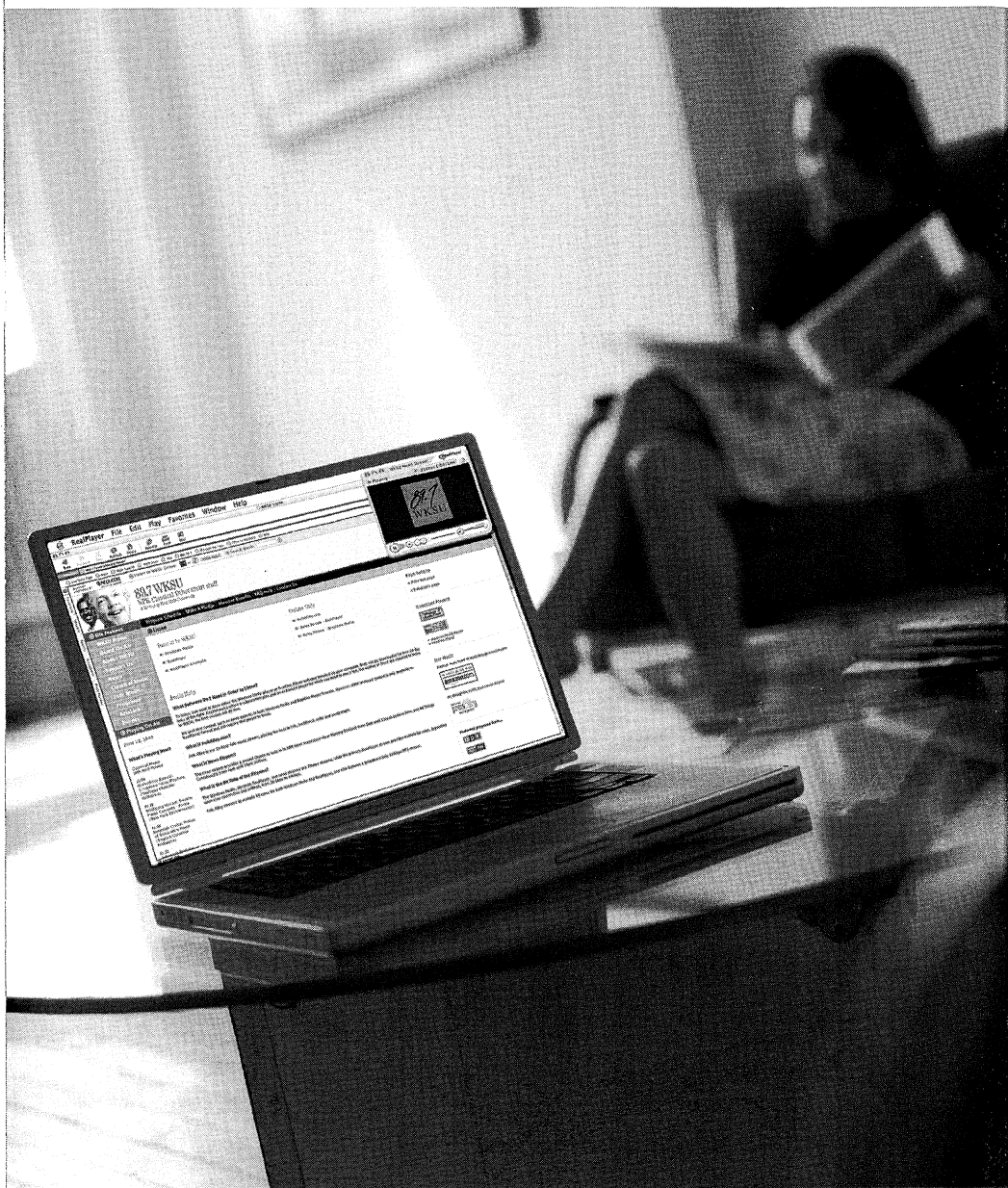
*Grand*  
**IDEAS**

**MINX**DESIGN

330.762.4126 • 1.888.GET.MINX

Fresh Solutions for Print Communication

Norwalk, Ohio. 2:13 p.m. *Michelle Vocaire listens to classical music.*



**NPR. Classical. Other smart stuff. 89.7 WKSU**

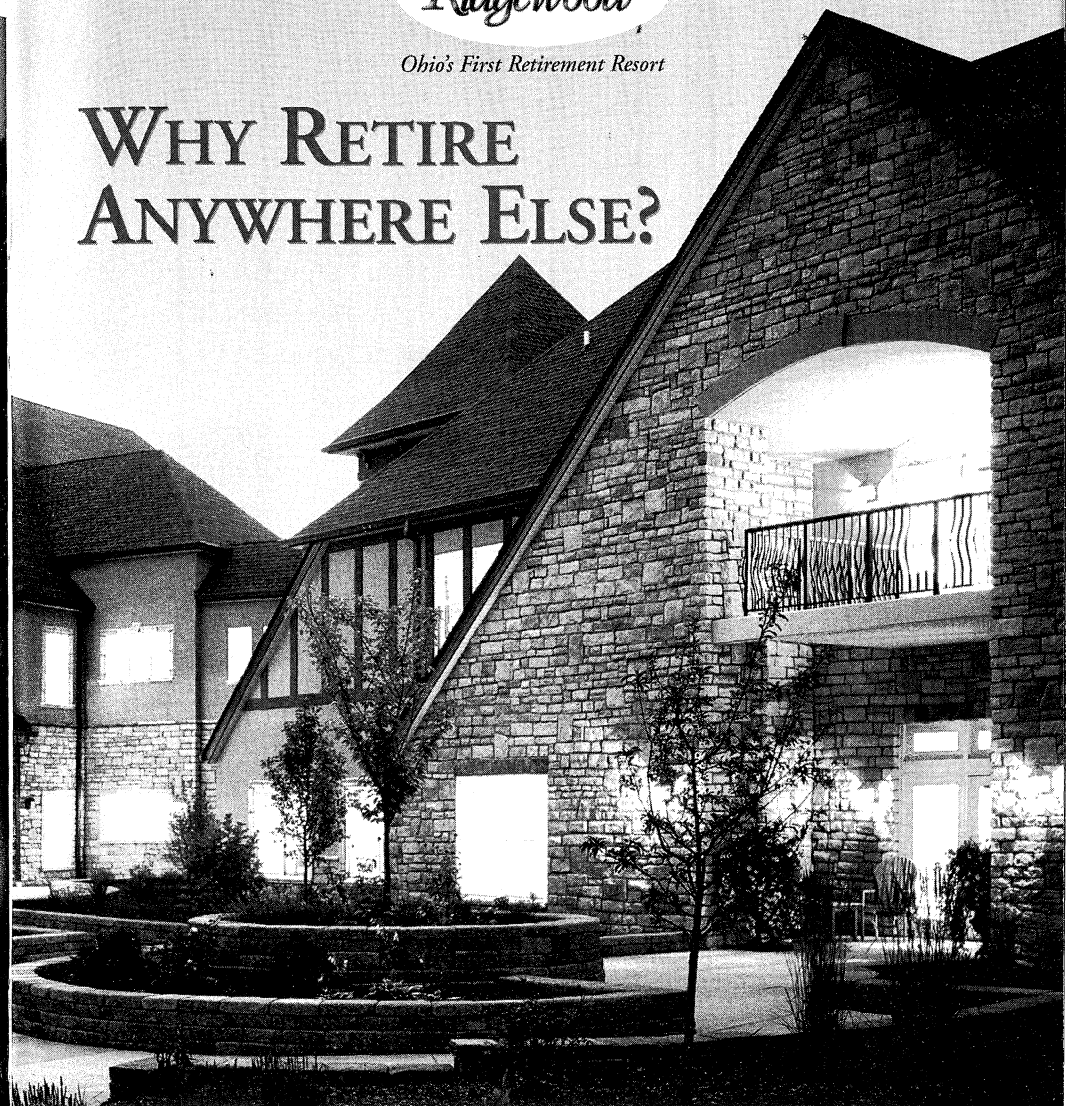
*A Service of Kent State University*

Akron, Ohio

SUMNER ON  
**Ridgewood**

*Ohio's First Retirement Resort*

## WHY RETIRE ANYWHERE ELSE?



**G**ood News! You no longer need to move to Florida or Arizona to enjoy a great retirement lifestyle! Sumner on Ridgewood, in Copley Township, has recently been certified as Ohio's first *Retirement Resort* - in recognition of the active retirement amenities (like indoor swimming pool & fitness center) and supportive healthcare services, all beautifully situated on a 64-acre campus. Bring a friend and let us treat you to a free luncheon and a grand tour - a free 2-hour "vacation" for you to enjoy!

*Call today to reserve your spot at an upcoming Taste & Tour of Sumner on Ridgewood.*

**330-664-1283** (Ref. #510L)

