



Dear David - WPC-DSM2
WEATHERVANE COMMUNITY PLAYHOUSE

Where Theatre Comes Alive!

A Youth/Family Production

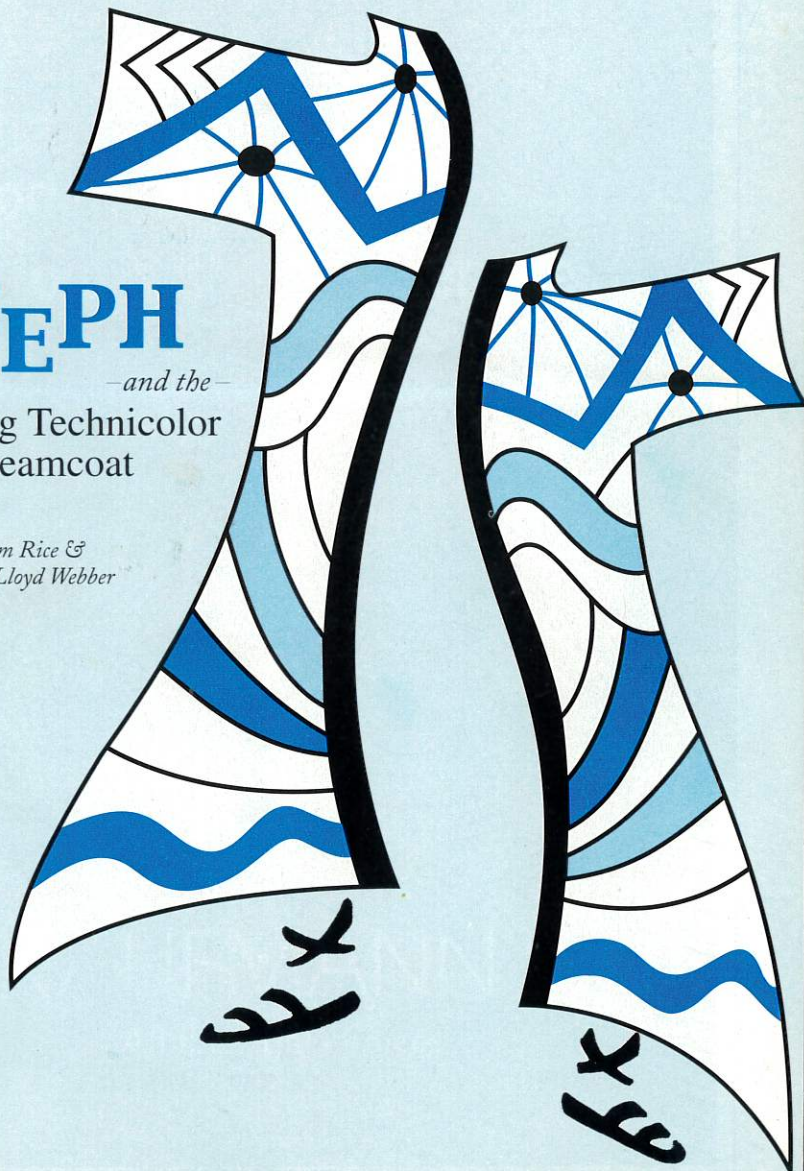
2002-2003

Sixty-Eighth Season

A season of Celebration!

JOSEPH
-and the-
**Amazing Technicolor
Dreamcoat**

*By Tim Rice &
Andrew Lloyd Webber*



November 23 - December 22, 2002



In step . . .

On cue . . .

In tune . . .

*Our thanks
to the
performing
artists of
northeastern
Ohio.*



audio-technica.

Audio-Technica U.S., Inc., Stow, Ohio
Audio products for home and professional use.
www.audio-technica.com



**modern style...
old-fashioned service**

KAUFMANN'S

All the right choices



68th Season

Weatherlane Community Playhouse

1301 Weatherlane Lane, Akron, OH 44313-5186
330-836-2626 Fax 330-873-2150 email: wcpakron@aol.com
on the web at www.weatherlaneplayhouse.com

2001-2002 MAINSTAGE SEASON PRODUCTIONS

#497 - #502

September 18 - October 6, 2002

The Chosen

Drama by Aaron Posner & Chaim Potok
Based on the novel by Chaim Potok

October 16 - November 3, 2002

The Wiz

Musical based on L. Frank Baum's The
Wonderful Wizard of Oz
Music & Lyrics by Charlie Small

January 15 - February 9, 2003

Arsenic and Old Lace

Comedy by Joseph Kesselring

February 26 - March 16, 2003

The Laramie Project

Drama by Moises Kaufman
& The Members of the Tectonic Theater Project

April 2 - 19, 2003

The Complete Works of William Shakespeare (Abridged)

Comedy by Jess Borgeson, Adam Long
& Daniel Singer

June 18 - July 20, 2003

Gypsy

Book by Arthur Laurents
Music by Jule Styne
Lyrics by Stephen Sondheim
Program subject to change

YOUTH/FAMILY PRODUCTIONS

July 27 - August 11, 2002

The Emperor's New Clothes

by Charlotte Chorpenning
Story by Hans Christian Anderson

November 23 - December 22, 2002

Joseph and the Amazing Technicolor Dreamcoat

Musical by Andrew Lloyd Webber

March 15 - 30, 2003

Hamlet

by William Shakespeare



WEATHERLANE WOMEN'S BOARD

presents

The Brementown Musicians

Performed by the Piper Puppets
April 26, 2003



Patron Information

★ **Emergency Exits** are located at the left front of the auditorium and the left side of the lobby. Front door and main lobby side exits will also be used in case of emergency.

★ **Restrooms** are found just off the entrance lobby ramp at the rear of the auditorium. Both men's and women's restrooms are wheelchair accessible.

★ **Handicapped Services** include seating for a limited number of wheelchairs. Please notify in advance if needed. Exterior and interior ramps make access easy for wheelchairs.

★ **Assistive Listening Devices** are available at the Box Office for the hearing impaired. This service is available thanks to the generosity of Virginia and J. Robert Wilson. In addition, some performances at Weatherlane may feature American Sign Language or audio-description translations.

★ **Patrons** who are expecting calls should leave name and seat number with the House Manager. Please turn off your cell phones, pagers and audible watches.

★ **Beverages and Food** may not be taken into the auditorium during performances.

★ **Use of Cameras, Tape Recorders, TV cameras** is prohibited during performances.

★ **Curtain time** - Every effort is made to begin shows promptly at 8 p.m. for evening performances and at 2:30 p.m. for Sunday

matinees. We appreciate audience courtesy in arriving on time.

★ **Latecomers** will be quietly seated at the rear of the auditorium during a suitable break in the play if space is available and may take their reserved seats after intermission.

★ **Exiting the Theater** - For safety and as a courtesy to other patrons and the performers, please remain seated until the auditorium lights are on at intermission or after the show. Auditorium doors will not be opened until the house lights are on. Parking lot illumination assures that getting to your car will be easy and secure.

★ **Smoking** - Weatherlane Playhouse is a smoke-free facility. Smoking is permitted outside the building.

★ **Lost and Found** items will be held at the Ticket Office until claimed. Please inquire about them during business hours.

★ **Comments** from audience members are always welcomed with interest. Please feel free to write to Weatherlane or call us to express your views and opinions about our productions, play selection or other matters. We appreciate hearing from you and will respond. Please send your comments to: *Executive Director, Weatherlane Community Playhouse, 1301 Weatherlane Lane, Akron, OH 44313-5186.*

BOXES PLUS™

Fairlawn Town Centre
330-836-3377

Stow Retail Park
330-342-1226

Akron's largest selection
of unique greeting cards

Full-service gift wrapping,
packaging and shipping

Avoid paying up to 70%
in estate and income taxes.



Sound financial planning
allows you to leave more
for your family and make
the gift of a lifetime to
The University of Akron.

Contact David Horn
Director of Planned Giving
The University of Akron
330-972-6870, or
e-mail dhorn@uakron.edu.
Ask for the booklet
entitled Giving Through
Retirement Plans.

The University of Akron

The University of Akron is an Equal
Education & Employment Institution.

Paul A. Daum ('64)



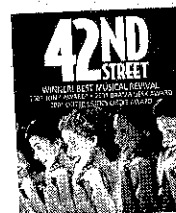
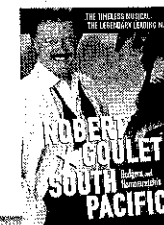
THE PLAIN DEALER **CLEVELAND.COM**
BROADWAY SERIES
www.playhousesquare.com 2002-2003

PLAYHOUSE
SQUARE
CENTER



Disney's
THE LION KING
June 27 -
August 17, 2003
State Theatre
ON SALE FEBRUARY 8TH

ROBERT
GOULET in
SOUTH
PACIFIC
Nov. 5 - 17, 2002
Palace Theatre

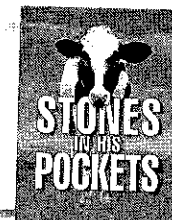


42ND
STREET
Feb. 18 -
March 2, 2003
Palace Theatre



THE PRODUCERS
the new
MEL BROOKS
musical
October 1 - 20, 2002
Allen Theatre

STONES
IN HIS
POCKETS
January 7 - 19, 2003
Palace Theatre



THE FULL
MONTY
March 25 -
April 6, 2003
Palace Theatre

LATE NITE CATECHISM
Starting in January, 2003
Your instructor
will notify you
of the class
location!



FOR TICKETS CALL:
216-241-6000

Groups of 20 or more, call 216-771-4444
www.playhousesquare.com

Continental
Airlines

PLAYHOUSE
SQUARE
CENTER

Magic 105.7

3
WKYC

PLAYHOUSE
SQUARE
CENTER

DESTINATION: PLAYHOUSE SQUARE CENTER...WE BRING THE WORLD TO YOU!



From the Barn to the Valley A Brief Weathervane History



From 1935 until 1951, Weathervane was housed in a modest carriage house barn on Marshall Avenue in Akron. The Barn, as it was known, has long since been destroyed but there are still a few people who recall its cramped quarters and especially the energy and devotion of the four ladies, Grace Hower Crawford, Laurine Schwan, Helen Troesch and Muriel MacLachlan, who believed that Akron deserved the best in theater and that volunteers could make it all happen. The plaque in our lobby lists the names of the other founders who shared their commitment and who joined their ambitious mission, producing everything from light comedy to Shakespeare and opera.

Though the Barn is now only a memory, its rooftop weathervane gave the theater its name and logotype character, the Chanticleer.

Except in 1948 when located at the Pythian Temple, the Barn was home to Weathervane until 1951. Then the organization renovated a building on Copley Road and became a more accommodating 100-seat facility. In 1960, Weathervane hired its first professional director, Bob Belfance, who served until 1992. Along with long-time custodian/ticket office manager, Nora Scott, the two-person staff relied on volunteer support. Paid guest directors and children's theater instructors served in part-time positions and Weathervane existed on a lean budget. Ticket office receipts, along with donations and community support, helped Weathervane meet expenses and created a modest endowment fund. Volunteers still nourish all of Weathervane's activities.

In the mid-1960s, a fund-raising drive resulted in construction of the present 263-seat facility which opened in 1970, one of the first enterprises at the head of the corridor into the Cuyahoga Valley National Recreation Area. Thanks to Grace Crawford's legacy, the mortgage has since been paid off. Growing audience demand for live entertainment and theater education continues to underscore Weathervane's needs for increased community support.

In its nearly seven decades, Weathervane has constructed, torn down, recycled, painted and refitted stage settings for more than 500 productions (when Stage Two and Youth Theater productions are included). We've stitched up hundreds of costumes, created lighting magic by the multi-watt, crafted reality out of scores of stage properties and, most of all, shared the talents of well over a thousand amateur performers, who take their performance curtain calls to the applause of more than a hundred thousand theatergoers. This effort is the result of volunteer dedication based on the founders' original philosophy that "all who can contribute are welcome."

Our volunteer archivist, Cue Fleming, has compiled the impressive list of productions back to 1935, a record of the dedication of those who have given their time to present each show to please the audiences who seek entertainment excellence each time the lights go up. Share the link to Weathervane's past by joining in the applause for today's performance.

NOTE: Weathervane always appreciates donations of past programs, photographs or other theater memorabilia which can be added to our archives kept at the University of Akron. Thank you.



Ticket Information

★ **Tickets** may be purchased by telephone when you call 330-836-2626 Tuesdays through Fridays from 10 a.m. to 5:30 p.m. You may also purchase tickets in person during these hours. On performance Saturdays only, the Ticket Office is open from 11:30 a.m. to 5:30 p.m. The Ticket Office is also open one hour prior to all performances and remains open through the first intermission.

★ **Telephone reservations** must be charged to a Visa, MasterCard or Discover credit card. Reservations are also required when using coupons from your Weathervane Super Coupon book, complimentary tickets or coupons offered from any other cooperating arts organization. Please arrive at the Ticket Office at least 20 minutes before curtain time to pick up your tickets. Any unclaimed tickets will be released for sale to waiting ticket buyers five minutes prior to curtain at the discretion of the Ticket Office Manager and volunteers.

★ **Special seating** - Please inform us if you have seating preferences, or require special attention due to visual, auditory or other physical needs. We'll do our best to accommodate you, but please remember orders are filled on a first-come, first-served basis with season subscribers and advanced group sales taking first priority.

★ **Super Coupon holders** are reminded that coupons do *not* ensure seats for a specific performance. Please call the box office early to reserve seats with these prepaid coupons.

★ **Season Subscriber Exchange** - Please call the Ticket Office at 330-836-2626 if you wish to exchange your subscription seat for another performance of the same show. Exchanges must be phoned in at least 24 hours prior to your originally

scheduled performance. We can't always guarantee the same seats but we'll give you the closest available replacements. An upgrade fee will be charged when changing subscription seats from a Preview Night to any other performance. *If you cannot use your subscription seats, please call us at least 24 hours in advance to release them. We will recognize this as a donation to Weathervane.*

★ **Student Rush Tickets** go on sale 30 minutes before curtain time allowing students with valid ID to purchase remaining tickets for half price on the night of performance, pending ticket availability. These tickets cannot be reserved in advance.

★ **Complimentary Tickets** for cast members and production volunteers require reservations and may be used only on designated performances. Complimentary tickets distributed to special donors also require reservations but may not be restricted to specific performances. Please let us know you wish to use a complimentary ticket when you telephone for a reservation.

★ **Discounted Group Reservations** are available for groups of 15 or more. Call Weathervane at 330-836-2626 to learn how you can entertain friends, associates, or clients with a night at the theater or to plan a fund-raising event for larger groups.

★ **Gift Certificates** are available through the Ticket Office at any time in any amount you choose.

★ **Recycle your playbills** - Anyone who doesn't wish to keep the playbill as a souvenir may drop it in our recycling box near the main entrance. We request that you do not bend, fold or deface the playbills as we will use them again for subsequent performances. Thank you.



“One of America’s
Best Hospitals”



The Pathway to
Quality Education

Preschool through Grade Eight

2315 Ira Road in Bath, Ohio near Hale Farm 330-666-1118 Visit our Web site at www.oldtrail.org



POINTE WEST PERFORMANCES

*“Eclectic Repertory
for the Serious Dancer”*

Call (330) 668-1254 for information
about our 2002-2003 Repertory Season
& Audition Dates



Ohio Arts Council

Building Ohio Through the Arts

Supporting organizations
with state tax dollars
to encourage
economic growth,
educational excellence
and cultural enrichment.



Share the Arts

727 East Main Street
Columbus OH
43205-1796
614/466-2613
www.oac.state.oh.us

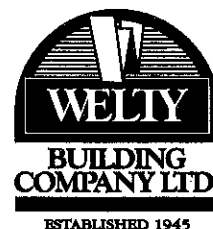
Visit today.

Arts in Ohio.com

Find out when and where arts and cultural events are
happening in Ohio. It's an easy list to search the Internet.
Find out what you can do to make the most important to you.

OOPS

NOT SPOKEN HERE.



No sheepish grins. No excuses either.
Construction management or
design/build services for your project.
On time and on budget.
End of story. Call Don Taylor, CEO.

123 S. Miller Road, Akron, Ohio 44333
330-867-2400 Fax: 330-864-4566
info@weltybldg.com
www.weltybldg.com

THE CREATIVE BUILDERS



Women's Board

The Women's Board was formed in 1938 to "offer voluntary service and financial assistance to the Playhouse" and has been a vital part of Weathervane functions ever since. Women's Board has energized the youth education program, sponsored productions, spearheaded fund raisers and paid for many of the amenities audiences and production volunteers continue to appreciate in the Green Room and kitchen. Members of this active group are invaluable as hostesses, office helpers and hard workers on backstage projects. The Women's Board sponsors an annual puppet presentation for children and also operates the Gift Boutique and art gallery as on-going fund sources.

Weathervane Women's Board welcomes new members who serve an apprenticeship allowing them to explore the full spectrum of Weathervane activities in which they may wish to participate. Membership is open to all. If you are interested in becoming part of this vibrant organization, please let us know. Leave your name at the Ticket Office or write: Weathervane Women's Board, c/o Weathervane Community Playhouse, 1301 Weathervane Lane, Akron, OH 44313-5186.

2002-2003 Women's Board Officers

Pat Obenour	President
Jean Questel	First Vice President
Susan Speers	Second Vice President
Alberta Carlin	Corresponding Secretary
Nancy Zeigler	Treasurer
Evelyn Stiggers	Assistant Treasurer

2002-2003 Women's Board Committee Chairs

Marci Paolucci	Art Gallery
Mary Wolfman & Barb Kistler	Boutique
Barbara O'Connor	Boutique Treasurer
Henrietta Cook & Dorothy Kies	Costumes
Lois Murray & Mina Agrawal	Hostesses
Alberta Carlin & Pat Weill	Newsletter
Marta Williger & Barbara Stevic	Cast Suppers
Marilyn Heagerty	Office Volunteer Scheduler
Lois Simmons & Linda Shearl	Hospitality
Liz Raines & Thelma Coss	Puppet Show
Betty Williams & B.J. Zeigler	Membership

The Women's Board welcomes new members.



Patron Generosity

Weathervane appreciates the continuing strong support of individuals, corporations, foundations and other donors who help finance the theater's operations, capital improvements and endowment program. Weathervane is classified as a 501(c)(3) organization and contributions are tax deductible. Following are some of the many ways in which you can take pride in your support of the art of theater in our community.

★ Become a Weathervane Member.

Your annual support makes you a voting member of Weathervane Community Playhouse. You'll receive discounts on educational programs and other benefits, based on the membership level you choose. Members are invited to Weathervane's annual meeting and to other special events such as the Chanticleer Awards Banquet. Memberships are renewable annually, beginning at \$50 (Contributing), and continuing at Sustaining, Patron, Silver, Gold and Platinum Levels. Membership is actively solicited in the fall but is accepted at any time. Members are recognized in the Playbill.

★ **Give a Special Gift To Say You Care.** Special donations may be made at any time to memorialize a friend or relative whose interest in Weathervane was significant to his or her life. You may also recognize and celebrate important dates or current achievements of relatives, friends or associates.

★ **Remember Weathervane in Your Heart and in Your Will.** What better way to carry on your tradition of support to Weathervane than by a planned gift. By taking advantage of the tax laws which encourage charitable giving, the U.S. Government will share in the cost of your gift to Weathervane. Your gift can fulfill a specific purpose or project while providing your estate with tax savings. To help ensure that Weathervane will continue, please contact our Executive Director for more information.

★ **Check For Matching Gifts.** Many national and local corporations will match your donations to Weathervane,

increasing your generosity to the theater. Please check whether or not your company participates in such a program.

★ **Designate Gifts To Local Foundations.** Several of this area's larger foundations accept memorial and tribute gifts in the name of specific organizations such as Weathervane Community Playhouse. Such gifts help assure continuing grants to the theater's operations and special projects. We are enormously grateful for the impressive history of foundation support in this community.

★ **Sponsor or Underwrite a Production.** Our productions may be underwritten by local corporations or foundations. Benefits can include private "command performances" and special receptions for employees and friends when your business chooses this important method of support. Please call 330-836-2626. We'd like to discuss this kind of opportunity with your executive officers.

★ **Capital Project.** The new construction segment of the Capital Project included a scene shop with basement storage, a 2nd-floor classroom, a 2nd-floor rehearsal hall, soundproof corral with construction of a production booth and office, elevator and fly gallery pocket above the stage. Donations for Stage Two of the project continue to purchase classroom furnishings, update the lighting system, purchase and install the rigging system for the fly gallery, renovate the lobby and replenish the Capital Fund for maintenance and repairs through 2010.



The clear
choice for
children



Children's
Hospital Medical Center of Akron
One Perkins Square
Akron, Ohio 44308-1062

Dress Up With Weathervane

Churches, schools, individuals and other theater groups may find rentable costumes or theater properties and stage dressing for their own productions in the Weathervane wardrobe and set storage areas. Please call 330-836-2626 to arrange for a consultation on your special production needs.



Graf Growers
Garden Center ~ Farm Market
1015 White Pond Dr. Akron
330-836-2727 www.grafgrowers.com



HERE'S TO ANOTHER HIGH-ENERGY PERFORMANCE.

AT FIRSTENERGY, WE APPLAUD THE MANY CONTRIBUTIONS THE ARTS MAKE TO ENRICH AND BRIGHTEN OUR COMMUNITY. WE'RE PROUD TO SUPPORT THE EFFORTS AND DEDICATION OF ALL THESE FINE PERFORMERS.

FirstEnergy®

2 2 3 8



Luigi's


"An Akron Tradition Since 1949"

- Award Winning Food
- Casual Dining
- Old World Elegance

Featuring Our Famous Homemade

- Pizza
- Lasagna
- Antipasto

OPEN 7 DAYS
105 N. MAIN ST.
330-253-2999



Another
bright spot
in the
Arts
in
Akron

DON DRUMM
Studios & Gallery

Over 800 top
artists represented

437 Crouse St.
Akron
330-253-6268
Weekdays 10-6, Saturday 10-5



Theater Education at Weathervane



Youth Education

Weathervane's mission to provide children's theatrical education began with Junior Weathervane classes in 1937. The education program has continued to grow since then with workshops and classes, plus production opportunities for children. In the 2001-2002 season, we offer professionally taught classes in acting, stagecraft, musical theatre and improvisation for children up to age 18. Fall and spring classes are held on Saturdays at Weathervane. In addition, two-week workshops for children are planned throughout the summer months. The cost is minimal with a limited number of scholarships available for motivated students and discounted fees for Weathervane members.

Children from throughout the community may also audition for roles in Youth/Family productions. Casting is not dependent upon class enrollment. Participation is an extension of valuable training in every facet of production from the audition process to technical and performance experience. Family members may also have learning opportunities by participating in such productions.

Weathervane works with area schools by providing outreach information and study guides in our **Project STAGE** program, which brings public and private school students to see as many as three productions each season. This season, *The*

Chosen, The Wiz, The Laramie Project and *Hamlet* will be featured in the **Project STAGE** events. Tickets are only \$8.

For information about classes or audition schedules for Youth Theater productions, please call our Education Coordinator at 330-836-2323.

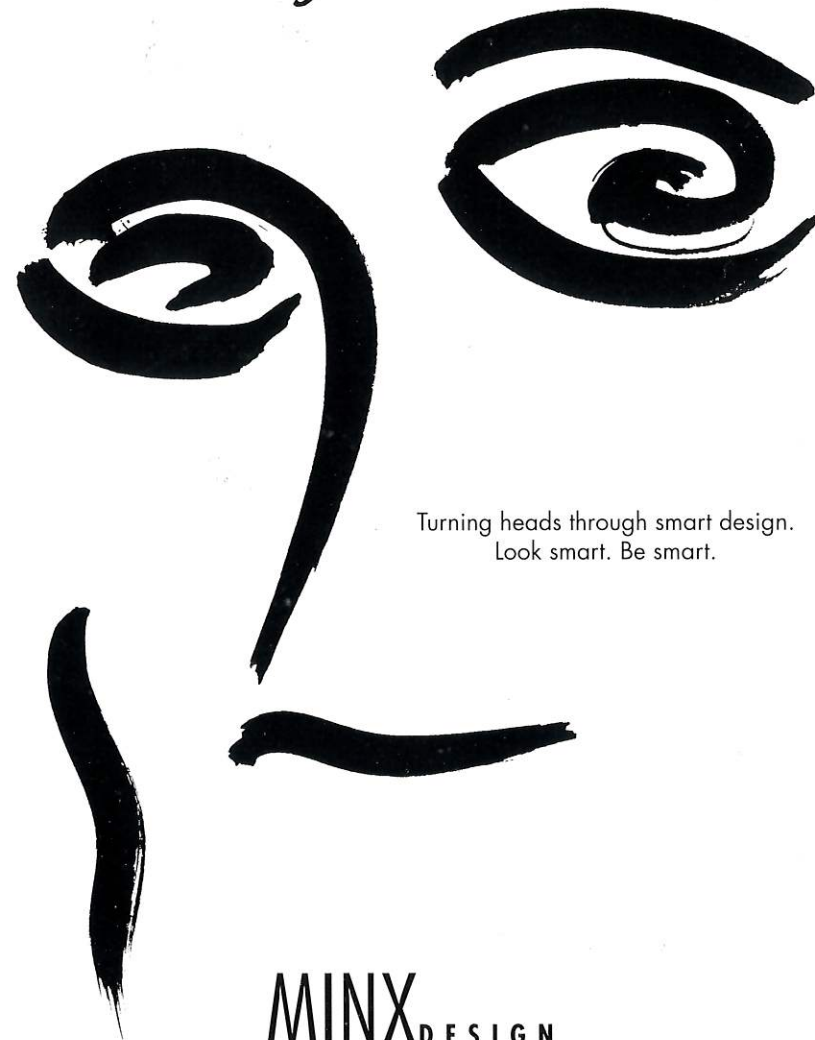
Adult Classes and Theater Training

Professionally taught fall and spring Adult Theatre Education classes include Scenic Design, Stage Lighting, Directing, Improvisation and Classical Drama. These classes help both new and experienced actors to expand their own performance and public speaking skills. Classes are held at the theater and costs are affordable. Call 330-836-2323 ext. 17 for details.

Learning On the Job

Every volunteer participant in a production actually becomes part of Weathervane's continuing education process. You'll learn from more experienced actors and technical helpers who share the creation of production and performance. If you don't have time for structured classes, sign on to become a crew member or performer. We'll help you expand your knowledge of backstage and onstage responsibilities along with your own talents and imagination. Please call us at 330-836-2626 and let us show you how to give new wings to your talent and new meaning to your time.

What Are You Looking At?



Turning heads through smart design.
Look smart. Be smart.

MINX DESIGN
330.762.4126 • 1.888.GET.MINX



Our Lady of the Elms

A Dominican Education for Girls.

Be Anybody. Start Here.

1220 W. Market St. • Akron, Ohio 44313-7108 • (330)-867-0918 • www.ourladyoftheelms.org

NPR. Classical.
Other smart stuff.
89.7 WKSU

A Service of Kent State University

Our Generous Donors

Weathervane Playhouse gratefully acknowledges the financial support of our corporate, foundation and individual members. Lack of space keeps us from including a complete list in this playbill. A complete list is included in our mainstage playbills.

FOUNDER'S CIRCLE (Gifts of \$5,000+)

Akron Community Foundation	Ohio Arts Council
City of Akron	OMNOVA Solutions Foundation
Margaret J. Dietz	Charles E. & Mabel M. Ritchie
The GAR Foundation	Memorial Foundation
The Goodyear Tire & Rubber Company	Sisler McFawn Foundation
The Lehner Family Foundation	Lloyd L. & Louise K. Smith
John A. McAlonan Fund	Memorial Foundation
Northeastern Ohio Education Association	Weathervane Women's Board

CORPORATIONS & FOUNDATION PLATINUM MEMBERS (Gifts of \$1000+)

Glenn R. & Alice B. Boggess Memorial Foundation	Michelson Foundation
Brennan Family Foundation	Laura R. & Lucian Q. Moffitt Foundation
Bridgestone/Firestone Trust	The RC & Katherine Musson
Kenneth L. Calhoun Charitable Trust	Charitable Foundation
Key Foundation	M. G. O'Neil Foundation
Robert A. Kutz Charitable Trust	◎ TARGET.
C. Blake & Beatrice McDowell Foundation	

INDIVIDUAL PLATINUM MEMBERS (Gifts of \$1,000+)

Fred & Francia Albrecht	Hubert E. Kirkland
Roger G. Berk	Jo Ann Oelschlager
Ann & Dave Brennan	Thomas R. Trotter
Elynmarie Kazle & Mark A. Zimmerman	Bernice Vigar

CORPORATIONS & FOUNDATION GOLD MEMBERS (\$500-\$999)

A. Schulman, Inc.	Fifth Third Bank	Roetzel & Andress
Akron Dispersions, Inc.	FirstMerit Bank	Summit County Internists, Inc.
Buckingham, Doolittle & Burroughs	GoJo Industries	Written Communication Radio Service
	Myers Industries, Inc.	

INDIVIDUAL GOLD MEMBERS

Eileen & Peter Burg	Dr. Jack & Libby Jacobs	Steven P. Schmidt, Ph.D.
John Grafton & Richard Worswick	Dr. & Mrs. Edward Koosed	Jean P. Stevens
Ralph & Eileen Greene	Richard & Leslie Lund	Mary & Mel Wolfman
Jim & Janet Heilmeyer	David & Orlene Makinson	Mona L. Wolfman
	Mrs. C. Blake McDowell, Jr.	

Next On Our Stage -- The 68th Season Continues

The final Youth/Family Production of the 2002-2003 Season...



by William Shakespeare
March 15 - 30, 2003

Arsenic and Old Lace

by Joseph Kesselring
Jan. 15 - Feb. 9, 2003

The Laramie Project

by Moises Kaufman
Feb. 26 -
Mar. 16, 2003

The Complete Works of William Shakespeare

(Abridged)
by Jess Borgeson,
Adam Long & Daniel
Singer
April 2 - 19, 2003

Gypsy

by Jule Styne & Stephen Sondheim
June 18 - July 20, 2003

Accessibility

Weathervane Playhouse is handicapped accessible. Ramps are available to the front doors, auditorium and seating.

Assisted-listening devices for the hearing impaired are available at the Ticket Office.

Large-Type program inserts are available at the Ticket Office. These copies are not full playbills but contain information unique to this production. These inserts are photocopied and are available in limited quantity.

American Sign Language interpretations are scheduled for selected Sunday performances.

Ohio Relay System 1-800-750-0750 TDD. Call to have your ticket order placed.

Limited Edition Set

WENDELL AUGUST

ESTD 1923

A Tradition of Craftsmanship

Flagship Location, Grove City, PA
(724) 458-8360

Prime Outlets Grove City, PA
(724) 748-4132

Holmes County, Berlin, OH
(866) 354-5192 Toll-Free

(800) 923-4438 Catalog
WendellAugust.com

10 Piece "Nutcracker"
2003 Collector's Ornament Set
& Nutcracker Figure
Aluminum, Bronze, Pewter
or Sterling Silver

For a unique shopping experience
visit one of our stores!



PORTAGE GLASS

INSURANCE WORK

Al Montigney

CUSTOM: Tub & Shower Enclosures - Mirror Installations

655-2777

FAX 650-1579

Table Tops - Mirrors - Screens & Storms repaired or manufactured

Window Glass - Plate Glass Replacement - Non-Glare & Regular Glare Glass -

Aluminium Entrance & Store Fronts

AUTO GLASS - WINDSHIELD HOLE REPAIR

Insulated Glass Replacement - One Day Service on Fogged or Broken Glass

5245 Darrow Road - Hudson, Ohio 44236

Weathervane Playhouse Staff

Elynmarie Kazle, Executive Director

Keith D. Campbell

Supervisor, Front-of-House

& Patron Relations

Alan Scott Ferrall

Scenic Designer/Technical Director

Janis L. Harcar

Director of Marketing & Development

Sean McConaha

Dir. of Education/Producer Youth Prod.

John A. Cotter

Business & Public Relations Assistant

Kathy Kohl

Assistant Technical Director

Pat Biddle

Bookkeeper

Dreajean L. Brown

Data Services Manager

Karen Angiolo
Colleen Bonacci
Rainy Boucher
Katy Campbell
Jenny Cicantelli
Jimmy Cimer
Courtney Colligan
Tyler Coombs
Travis Crabtree
Amanda Dorton
Ian Downing
Courtney Dunbar
Tara Emery
Megan Flinta
Kelly Flynn
Benjamin Fortin
Keith Foster
Nicole Gobbie
Jececca Gomboda
Maddy Hauck
Allison Hight



L
A
K
E
V
I
E
W

C
H
O
I
R

Erin Houchen
Rachel Kirgesner
Mitchell Kline
Abby Koch
Kim Lewis
Jeff Looker
Kaci Lutman
Bridget Mahoney
Emmy Malin
Kayla Marttala
Sarah Massie

Shelbey Mitchell
Deanna Moore
Amberly Neice
Victoria Nolic
Nicole Oles
Taylor Orvosh
Tiffany Oshinsky
Leah Poiner
Alyssa Polly
Nicole Richard
Rachel Rutherford

Sara Rutherford
Persy Sample
Jaclyn Schafer
Donny Shallahamer
Rachel Spiker
Mallory Starks
Ellie Swanger
Allyson Thomas
Shannon Trenner
Lyndsey Walker
Abby Wentz

Andrew White
Megan Winter
Jessica Zivny

STUDENT MANAGERS:
Allison Kolbe
Kara Carden

DIRECTORS:
Amie Gabel
Robert Heid

Weatheravane Community Playhouse

68th Season - 2002-2003

November 23 - December 22, 2002



by
**Tim Rice &
Andrew Lloyd Webber**

Directed by **Margaret Knepper**
Choreographed by **Sarah McCoy**

Scenic Designer/Technical Director ✓
Alan Scott Ferrall

Stage Manager ^{no record}
Whitney Turner

Properties Designer ✓
Nancy Zeigler

Lighting Designer ✓
Mark A. Zimmerman

Costume Designers ✓
Christine Schueneman
Henrietta Cook

Sound Designer ✓
Charles Korecki

Assistant Stage Manager ✓
Danielle Rusen

Joseph and the Amazing Technicolor Dreamcoat is produced by special arrangement with **Rodgers and Hammerstein Theatre Library**, 229 West 28th Street, New York, NY 10001.

Weatheravane productions are sponsored in part by



Weatheravane Community Playhouse, 1301 Weatheravane Lane, Akron, OH 44313-5186
Ticket Office: 330-836-2626 - Fax: 330-873-2150 - Email: wcpakron@aol.com
www.weatheravaneplayhouse.com



**Weatheravane
Community
Playhouse**
is a proud member of



**Ohio
Community
Theatre
Association**

**Marissa,
Narrator
Bravo!
Bravo!**



**You Shine!
Love,
Mom, Dad
and Booma**



Our Directing Team

MARGARET KNEPPER -- Director, Musical Director, Conductor

Margaret is pleased to return to Weathervane to direct *Joseph*.... She has been musical director for our productions of *A Funny Thing Happened on the Way to the Forum*, *Stuart Little—The Musical*, *Annie*, *The All Night Strut*, *Cabaret*, *Cinderella*, *Oliver!*, *The Velveteen Rabbit*, *Working*, and *Kiss Me, Kate*. With an extensive music and theater career spanning nearly 30 years, Margaret is an accomplished actress, singer, musician, director and costume designer. She was a music performance major at Baldwin-Wallace Conservatory of Music with additional studies at The University of Akron and the University of Michigan, and has performed with the Cleveland Opera, Berea Summer Theatre, Goodyear Community Theatre, Greenbrier and First Night Akron. Margaret has taught voice and flute at Medina High School, Brad French Studios and Weathervane Playhouse and is a long-time church soloist. For Medina High School she has directed *The Music Man*, *Carousel*, *Grease*, *Hello, Dolly!* and *Joseph*... and also directs the school's Show Choir, The Encore Entertainment Company.

SARAH MCCOY -- Choreographer

Sarah is excited to make her Weathervane debut as the choreographer for *Joseph*.... A senior at Medina High School, she has been heavily involved in dance, as well as with the choral program, during the past four years. In her junior year, she traveled to Myrtle Beach as a national finalist in the Eastern Dance Association's "Best All-Around Dancer" competition. She has also served as dance captain of MHS's showchoir, Encore, dance captain of her school's production of *Joseph*... and dance captain/assistant choreographer in Medina's annual production of "Showtime." This year, Sarah is the president of the Concert Choir and dance captain of Encore, where she recieved the honor of choreographing their 2002 Christmas show. She would like to thank the cast and director of *Joseph*... for its wonderful enthusiasm!

Pit Orchestra

Margaret Knepper -- Piano/Conductor

W. Scot Sexton -- Percussion

Scott Sexton -- Percussion

David Spondike -- Bass

In Our Bank-One Visual Arts Gallery

The art work in our gallery during the run of *Joseph and the Amazing Technicolor Dreamcoat* is proudly displayed by third grade students from **Crouse Elementary School** in Akron. The students are invited guests to a daytime performance of the show and a reception afterwards.

Joseph and the Amazing Technicolor Dreamcoat -- Cast

Joseph	Colin James Cook
Narrator	Marissa Montigney
Jacob	Doug Kohl
Pharaoh/Potiphar	Matthew Garcia <i>no file</i>
Gad	Kyle Herman <i>no file</i>
Reuben	Kris Jackson-Bostick
Levi	Cory Wilson <i>no file</i>
Isaacher	Chris Rusen
Napthali	Derrick Turner <i>no file</i>
Zebulun	Cory Schafer
Judah	Nigel Hujar
Simeon	Dan Rotnem
Benjamin	Santino Russo
Asher	Ryan Kepes <i>no new</i>
Dan	Richie Cole <i>no new</i>
Potiphar's Wife	Chelsey Krummel

Wives: Gina Wilson, Alix Reilly, Charlee Lemaster,
Katie Farragher, Rachel Dubin, Becca Carter,
Stacy Steele, Cassandra Povirk, Sarah Seider, Shannon Houser *no new*

Ishmaelites: Matthew Fortin, Aaron Jameyson,
Katie Kohl, Drew Reilly, Ben Schafer,
Merry Schueneman, Danielle Schprechman

Anchor Chorus

Marissa Caroniti, Sal Caroniti, Kody Fitzgerald, Kara Sidebotham

**For your safety, we request that you remain seated until the house lights have come up at intermission and after the curtain call.*

**The use of cameras, recording equipment and laser pointers is forbidden during this performance.*

**As a courtesy to fellow audience members, please make sure that cell phones and pagers are turned off during the performance.*

**Please do not bring food or drink in the auditorium.*

**NOTE: In case of an emergency in which the performance cannot continue, Calamity Vouchers will be issued for a future performance. Thank you.*

Musical Numbers

Act I

Overture
Prologue/Any Dream Will Do
Jacob & Sons/Joseph's Coat
Joseph's Dreams
Poor Poor Joseph
One More Angel in Heaven
Potiphar
Close Every Door
Go Go Go Joseph

Act II

Entr'acte
Pharaoh Story
Poor Poor Pharaoh/Song of The King
Pharaoh's Dreams Explained
Stone the Crows
Those Canaan Days
The Brothers Came to Egypt
Who's the Thief
Benjamin Calypso
Joseph All the Time
Jacob in Egypt
Any Dream Will Do
Reprise One: One More
Angel/Calypso
Reprise Two:
Grovel Grovel/Go Go Go Joseph

Future Events

Sundays at Seven: Salon Reading Series
Dec. 8, 2002 (Adult subject matter)
The Santaland Diaries
by David Sedaris/adapted by Joe Montello

December 11, 2002
Annual Holiday Drop In
4 - 8 p.m. Fun & Food! Come all!

Spring Classes for Children Ages 4 - 18 begin February 15 (10-weeks)

March 15 - 30, 2003
Hamlet by William Shakespeare
Youth/Family Drama (Gen. Aud. 13+)

Please check out the remainder of the 2002-2003 season schedule on another page in this program.

YARTS™

We build strong kids, strong families, strong communities.

The Akron Area YMCA believes in building strong kids, strong families and strong communities. We salute the efforts of the Weathervane Playhouse to involve youth and families in the performing arts.

Akron Area
YMCA

Callboard - Cast Biographies

COLIN COOK (Joseph) is a seasoned Weathervane. This is his second go-round as Joseph. Some of his recent Weathervane roles include Jonathan Harker in *Dracula*, Sandy in *The Philadelphia Story* and Lord Alfred Douglas in *Gross Indecency...* and he has been seen in *Zombie Prom*, *Parade* and *Falsettos* in Cleveland.

MARISSA MONTIGNEY (Narrator) is appearing in her ninth Weathervane show, including the last five holiday productions, *Cinderella*, *Babes in Toyland* and the past two years of *Joseph*. A senior at Kent Roosevelt High School, Marissa has sung the National Anthem at the Cavs and Rockers basketball games at Gund Arena numerous times.

KRISTINA MILLER (Narrator) returns to Weathervane after just being seen as Dorothy in *The Wiz*. In addition to last year's *Joseph...*, Kristina was part of the Miller South School for the Visual and Performing Arts production of *Joseph...* with the Osmond Brothers Second Generation and Debbie Gibson and played one of the Doo-wop girls in *Little Shop of Horrors* here at Weathervane. She is a junior at Firestone High School.

MATTHEW GARCIA (Pharaoh/Potiphar) is appearing for the first time at Weathervane. A camp director for the YMCA, Matthew has 10 years of community theatre experience and has a BA degree from Tufts University and an MFA degree in Film from The University of Southern California.

DOUG KOHL (Jacob) is a member of Weathervane's Board of Trustees and the Chief Executive Officer of the Akron Area YMCA. Doug was seen last season as Nachum in *Fiddler on the Roof*.

KYLE HERMAN (Gad) is pleased to return to Weathervane as an actor. An eighth grader at Kimpton Middle School, Kyle was last seen as Wilbur in the 2001-2002 production of *Charlotte's Web*.

CORY S. WILSON (Levi) is another newcomer to Weathervane. He has been seen on stage at Brecksville Theatre on the Square in *Little Women*, *Oliver!* and *A Christmas Carol*. Cory is a ninth grade student at Highland High School in Medina.

CHRIS RUSEN (Isaacher) is a senior at Copley High School. He has been seen in school productions of *Guys and Dolls*, *Arsenic and Old Lace*, *Man of La Mancha* and *An Evening of Murder*. This is his second year in *Joseph...* at Weathervane.

DERRICK TURNER (Naphthali) is another new performer on our stage. A freshman at Copley High School, Derrick has appeared in school productions of *The Music Man* and *Father of the Bride* and enjoys sports and percussion.

CORY SCHAFER (Zebulun) is returning to Weathervane's *Joseph...* He has also been seen in our productions of *Anne of Green Gables*, *Romeo and Juliet* and *Babes in Toyland*. He is a junior at Stow-Munroe Falls High School and is a student in the Pre-Engineering Academy.

NIGEL HUIJAR (Judah) has appeared in eleven Weathervane productions over the last five years. Most recently in *Fiddler on the Roof* and *Our Town*. Nigel is in eighth grade at St. Anthony's.

DAN ROTNEM (Simeon) is a newcomer to Weathervane and pleased to be part of this production of *Joseph...* He is a sophomore at Walsh Jesuit High School. Dan was awarded a Bronze Medal in Karate in the 1999 Junior Olympics.

KRISTOPHER JACKSON-BOSTICK (Reuben) is a home-schooled sophomore. He served as the Prop Master for the Weathervane production of *Stuart Little*. He participates in Gospel Meets Symphony, Youth Excellence and is active at House of the Lord.

Callboard Continued – Cast Biographies

RICHIE COLE (Dan) is making his Weathervane debut. A freshman at Mogadore High School, he has performed in David Ives' *Words, Words, Words* and *Titanic: The Unsinkable Dream*.

RYAN KEPES (Asher) is pleased to join the cast of *Joseph...* at Weathervane. His other credits include *Arsenic and Old Lace*, *Guys and Dolls* and *A Christmas Carol* at Copley High School, where he is a sophomore.

SANTINO RUSSO (Benjamin) is a freshman at Highland High School. He has been seen on the Weathervane stage in *Our Town*, *Stuart Little* and last season's production of *Joseph...* and also as Mike in *Charlie and the Chocolate Factory* at Brecksville Theatre on the Square.

CHELSEY KRUMMEL (Potiphar's Wife) is a sophomore at Walsh Jesuit High School where she is a member of the Harmony Gold Show Choir, Chamber Ensemble and the Drama program. She was seen here in *Charlie and the Chocolate Factory*, *The Velveteen Rabbit* and *Babes in Toyland*.

REBECCA CARTER (Wife) has participated in the Weathervane Summer Stock performances of 2004: *a Telling of Tomorrow*, *Dear Gabby* and *All in the Timing*, as well our productions of *Joseph....* Becca is a sophomore at Firestone High School in the Visual and Performing Arts Program.

SHANNON HOUSER (Wife) is a sophomore at St. Vincent-St. Mary's High School. She is an active actress, singer and dancer who has won several awards for performing. She has been seen in *Cinderella*, *Babes in Toyland* and *Joseph...* previously at Weathervane.

RACHEL DUBIN (Wife) is a sophomore at Walsh Jesuit High School. She has been seen in Weathervane's last four Summer Stock performances and was seen in

Joseph... and *Our Town* last season.

CHARLEE LEMASTER (Wife) is a seasoned Weathervaner, having been seen in *Oliver!*, *The Jungle Book*, *Cinderella*, *Alice and the Wonderful Tea Party* and now *Joseph...* for the second time. She is a sophomore at Chippewa High School and is active in drama and choir.

KATIE FARRAGHER (Wife) is a member of the National Jr. Honor Society. She attends Highland High School where she is active in many sports and the performing arts. Katie has been seen in Weathervane productions of *Joseph...* and *Our Town*.

CASSANDRA POVIRK (Wife) has performed at Carousel Dinner Theatre and the North Canton Playhouse. A junior at Wadsworth High School, she is pleased to rejoin the cast of *Joseph...* in 2002.

ALIX REILLY (Wife) is a freshman at Mogadore High School, where she serves as her class Vice-President. She has been seen in local theaters in *Oliver Twist*, *The King and I*, *Annie* and of course last year's production of *Joseph....*

SARAH SEIDER (Wife) is a junior at Revere High School and has studied with the West Side Vocal Academy. She had performed in productions of *Bye Bye Birdie*, *My Fair Lady*, *The Wizard of Oz* and *The Sound of Music*.

STACY STEELE (Wife) is a sophomore at Twinsburg High School. Her theatre experience includes roles in *Oliver!*, *The Wizard of Oz*, *Peter Pan* and *Flowers for Algernon*. She recently was seen in *Cinderella* at Aurora Community Theatre and is pleased to return to *Joseph....*

GINA WILSON (Wife) is in the eleventh grade at Firestone High School. She has performed in Europe with the Miller South Show Choir and hopes to one day become a neurosurgeon. This is her second season in the cast of *Joseph....*

Callboard Continued – Cast Biographies

SAL CARONITI (Anchor Chorus) makes his first appearance on the Weathervane stage. He is a sixth grade student at St. Albert the Great School in North Royalton. He enjoys baseball, basketball and collecting sports memorabilia.

MARISSA CARONITI (Anchor Chorus) also makes her first appearance on the Weathervane stage. She is a fourth grade student at St. Albert the Great School in North Royalton. Marissa enjoys ballet and has performed in *Charlie and the Chocolate Factory* and *Hansel and Gretel*.

KODY FITZGERALD (Anchor Chorus) is an active Boy Scout who attends Bolich Middle School and likes to sing and play football. He has performed with ANTIC in Cuyahoga Falls, appearing in *Pocahontas* and *Huckleberry Finn*.

KARA SIDEBOTHAM (Anchor Chorus) is in sixth grade at Sill Middle School in Cuyahoga Falls. A member of Summit Choral Society Children's Choir, Kara enjoys singing and performing and has been seen onstage the past two years in *Joseph...* at Weathervane.

MERRY SCHUENEMAN (Ishmaelite) loves to sing, play French horn and act. This Kimpton Middle School seventh grader has been seen in the Weathervane productions of *Charlotte's Web*, *The Jungle Book* and *Stuart Little*. This is her third season of *Joseph....*

DANIELLE SCHPRECHMAN (Ishmaelite) is a freshman at Firestone High School where she participates in the Women's Chorus. She has performed in

school productions of *Peter Pan* and *The Wizard of Oz* and appeared in *Fiddler on the Roof* at Weathervane.

DREW REILLY (Ishmaelite) is in seventh grade at Mogadore Junior High School. He enjoys reading and has been seen on stage at numerous area theatres and performed in *Anne of Green Gables* and *Joseph...* at Weathervane.

MATTHEW FORTIN (Ishmaelite) is in ninth grade at Stow-Munroe Falls High School. He enjoys music, theatre and sports. He has been seen onstage at Weathervane in *Charlotte's Web* and *Stuart Little*.

AARON JAMEYSON (Ishmaelite) attends eighth grade at Miller South School for the Visual and Performing Arts. His stage roles have included parts in *The Emperor's New Clothes*, *Our Town*, *The Hobbit*, *Charlotte's Web* and *Oliver!*

BEN SCHAFER (Ishmaelite) is in seventh grade at Kimpton Middle School in Stow. He was last seen as The Emperor in *The Emperor's New Clothes* on our stage. In addition to being in ETC All-American Show Choir, Ben enjoys sports and acting.

KATIE KOHL (Ishmaelite) is in the eighth grade at Miller South School where she is in show choir and jazz band. This is her first show at Weathervane. She also enjoys playing soccer.

MINDY MYERS (Celebrity Walk-On) is in the seventh grade at Hyre Middle School. She enjoys plays, movies, reading and drawing.

JANET PERA (Celebrity Walk-On) enjoys being a wife, mom, grandma and secretary and is a life-long Akron resident.

Backstage Callboard – Designer Biographies

WHITNEY TURNER (Production Stage Manager) is a senior at Copley High School where she plays in the Jazz Band and Marching Band, is active in Mock Trial and drama and is a member of the National Honor Society. She has been involved in *The Chosen* and *Fiddler on the Roof*. This show marks her debut as a Stage Manager.

DANIELLE RUSEN (Assistant Stage Manager) is pleased to be working backstage on her ninth show at Weathervane. She is a ninth grader at Copley High School and has experience working with lights and props for Mainstage and Youth productions at Weathervane.

NANCY ZEIGLER (Properties Design) is pleased to be involved in this production of *Joseph...* She looks forward to her daughter's involvement in the show upon her return from Ohio University. She encourages all other Youth Theatre parents to become involved in production aspects of the shows at Weathervane Playhouse.

MARK A. ZIMMERMAN (Lighting Design) currently serves as the Production Board Chairman and as the FirstEnergy

Lighting Chair at Weathervane. He has developed and executes a theater curriculum for students in a district-wide Visual and Performing Arts program for the Akron Public Schools which is based at Firestone High School.

CHRISTINE SCHUENEMAN (Costume Co-Designer) is a graduate of Kent State University and has been working in Weathervane's costume shop since 1996 on shows including *Stuart Little*, *The Wiz* and *The Jungle Book*. She's also worked with the Lakeview Musical Theater on productions of *Annie* and *Fiddler on the Roof*. She won the Chanticleer Award for costumes for *A Funny Thing Happened on the Way to the Forum*.

HENRIETTA COOK (Costume Co-Designer) is one of our regulars in the costume shop. She co-designed costumes for *Joseph...* last season and also *The Sunshine Boys* a couple of seasons ago.

CHARLES KORECKI (Sound Designer) is our Production Board Sound Chairman and is auditorium manager at Cuyahoga Falls High school. Most recently, he designed sound for *The Wiz*.

Project STAGE

Project STAGE is a program developed by Weathervane Playhouse to bring to young audiences the excitement of live theater. Teachers and students receive study guides and pre-performance, in-class discussions are conducted free of charge by Weathervane staff and volunteers. The **special Project STAGE ticket price is \$7.**

The Chosen, September 18 - October 6; *The Wiz*, October 16 - November 3; *The Laramie Project*, February 26 - March 16 and *Hamlet*, March 15 - 30 are the **Project STAGE** offerings for the **2002-2003** season. We will be glad to help you make the arrangements to bring your students. Call our Education Department at 330-836-2323 ext. 17.

Production Team Members & Crews

SET CONSTRUCTION

Ruth Richardson	Danny Constantine
Tom Marshall	Chuck Ayers
Kathy Kohl	Rachel Thomson
Alex Marshall	Amy Kollar
Kevin Ford	

COSTUMES

Kim Jameyson	Stephanie Schafer
Lindsey Jameyson	Ethel Soudry <i>Not</i>
Henrietta Cook	Sally Brown
Dorothy Kies	Betty Watterson
Mary Sobah	Connie Velotta
Betty Williams	Sandra Harding
Leslie Schafer	

PROPERTIES

Erin Montgomery
M.J. Coulson

SOUND

Tom Barnes	Nathan Cohen
Chris Moore	Matt Schlosser
Ryan Durfee	

LIGHTS

Steve Lawson	Stephanie Ferreira	Kathy Kohl	Leandra Schindler
Amy Ayers \	David Hawkins	Amelia Lamp	Simon Siegel
Becca Carter \	Jack Hornickel	Ashley Mains	Michele Sinsky
Jordan Cooper \	Jennifer Johnson	Megan Michelson	Christina Tait
Jim Curtis	Danielle Jullian	Mia Osherow	Rachel Zelin
Mandy Davis	Erin Katz	Cheryl Saferstein	
Erin Dillon	Elynmarie Kazle	Jeri Saponetti	
Ryan Durfee	Jessica Kent	Leah Sass	

Acknowledgments

Vaughn Austin -- OCTA
Representative
Weathervane Women's Board
Weathervane Staff
Marie Martin Designs
AA Sound -- Will Roth

Firestone High School
Medina High School
Northcoast Theatrical
Lakeview Intermediate School --
Amie Gabel & Robert Heid
Parents of the Cast & Crew

Firestone Theatre 2002-2003 Season

The Man Who Came to Dinner

by George S. Kaufman and Moss Hart
directed by Mark A. Zimmerman

December 5, 6, and 7, 2002 at 7:30 p.m.

Firestone High School
333 Rampart Avenue, Akron
(330) 873-3408

Grease

book, music, and lyrics by
Jim Jacobs and Warren Casey
directed by Mark A. Zimmerman
original choreography by Michele Valdez

February 27, 28, & March 1, 2003
at 7:30 p.m.

Akron-Canton's
only
television
newscast
is here!

Watch Your
Newscast
Weeknights
at 6:30

Proud sponsor of
Weathervane
Community Playhouse

PAX23
news
PAX53



ERIC MANSFIELD
anchors Akron-Canton news



MARK NOLAN
forecasts Akron-Canton weather



JIM DONOVAN
covers Akron-Canton sports



Weathervane Hours

Weathervane Business Office hours are from 10 a.m. to 5:30 p.m. Tuesday through Friday. To place ticket orders call the **Ticket Office** at **330-836-2626**. The ticket office hours are Tuesday through Friday from 10 a.m. to 5:30 p.m. During performances, the Ticket Office opens one hour before each performance and remains open through the first intermission only. On performance Saturdays only, the Ticket Office is open from 11:30 a.m. to 5:30 p.m. Ticket hours on performance Sundays begin at 1:30 p.m. Reservations may be made in person or by telephone with a credit card number.

Of course, rehearsals, set construction, classes and performance times often mean that staff and volunteers are likely to be available at other times than the hours noted during the week. For information, please call 330-836-2626. You may leave a voice mail message for a staff member, but we do not accept recorded ticket reservations. For any Ticket Office-related business, please call during Ticket Office hours.

Akron Area Arts Alliance

Weathervane Community Playhouse is a member of the **Akron Area Arts Alliance**. Its mission statement is "to utilize its collective resources to

- 1) foster communication and coordination among area cultural groups
- 2) generate greater awareness and participation in the arts and humanities in all segments of the community
- 3) promote the value of the arts and humanities to local governments and advocate its financial investment in the community's cultural activities."

Season Coupons

Seats for Weathervane's most popular shows, especially those late in the season, often sell out fast. Saturday night seating is frequently difficult to obtain, so it's smart to call for reservations early. *Please remember that coupons don't guarantee your seats. You must call for reservations.* Check the production schedule in your Super Coupon book and plan to use as many coupons as you wish for the shows you plan to see. We hope you'll use your convenient coupons frequently and won't find yourself missing out on sold-out shows or ending the season with unused coupons. Performances and schedules are subject to change so, for the most up-to-date information, call our ticket office at 330-836-2626.

Remember, you can always buy a new Super Coupon book at the Ticket Office any time you want to treat yourself and several friends to a Weathervane show. Books of eight coupons provide a modest savings over regular admission prices.

Mission Statement Weathervane Community Playhouse

The mission of the Weathervane Community Playhouse is to entertain, inform and educate, thereby enriching the cultural life of the Greater Akron area. Weathervane shall provide area residents the opportunities both to attend and to participate in quality presentations of a cross-section of the finest theatrical works available. Weathervane shall provide education in the theater arts to adults and children. In meeting these goals, Weathervane shall be mindful of the standards of its audiences and shall maintain fiscally sound management.



Before You Throw It Out, Ask Us

Weathervane can often make good use of used furniture and household items so please think of us when you're redecorating, cleaning or moving. Small rugs, carpet remnants, draperies or curtains are also appreciated.

Our wardrobe department also appreciates donations of clothing, shoes, women's purses, hats and jewelry, as well as usable patterns and lengths of fabric.

Please call before bringing donations to the

theater so we can tell you what may be needed most by our property or wardrobe department.

If we can't make use of your much-appreciated gifts, they may be passed on to another charity. We also, every so often, hold a rummage sale to clear our storage areas of items that we find we haven't been able to use. Your donations are appreciated and you may even see a favorite piece on stage some day.

We're not the same old Song & Dance at



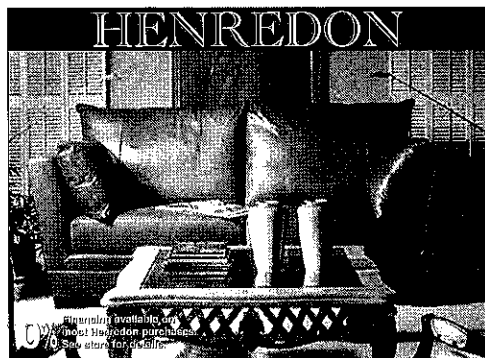
Stinaff's
DATA FORMS & SYSTEMS SINCE 1936

44 S. Summit St. • Akron, OH 44308
330-434-2106 • Fax 330-434-9376

LASER/COMPUTER FORMS & SUPPLIES • FULL COLOR PRINTING • FORMS MANAGEMENT



The Best Place For Fine Furniture in Greater Akron is at Wayside



- Over 200,000 sq. ft. of inventory.
- Providing friendly, responsive service for over 65 years.
- Professional interior designers on staff.
- We buy and sell for less ... every day.

Fine pieces from these quality manufacturers on display:

Thomasville • Pennsylvania House
Stanley • Lexington • Nautica
Lane • Smith Brothers • Flexsteel
Bob Timberlake • Cochrane
Thomas Kinkade • Broyhill • Clayton Marcus
Canadel • Howard Miller • Hooker
Sumter • Crescent • Dozens More

Visit our newly-opened 10,000 square-foot addition!

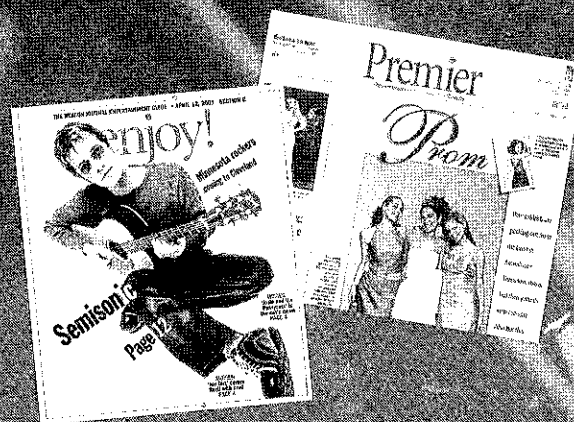
Wayside
furniture

"Where You'll Find Better Furniture Priced Lower"

1367 Canton Road Akron On Route 91,
just 1/4 mile south of Route 224
Shop Daily 10 to 9, Saturday 10 to 6, Sunday 1 to 6
Visit our website: www.wayside-furniture.com

(330) 733-6221

Enjoy Our Premier Performance



AKRON BEACON JOURNAL
There's something in it for you.



We're Proud Of Weathervane Volunteers

Weathervane began as a volunteer organization and continues its growth thanks to the time and talent members of our community continue to invest in it. Our on-stage performers have worked long and hard to earn your applause. But their work is supported by many other unseen men and women who've helped build and paint sets, run the lights and sound, make sure that properties and set dressing items are in their proper places and do other backstage labor from stage managing to costuming and make-up. Supporting those who are actively involved in putting on each show are still more volunteers who usher, house manage, sell tickets, keep our office running and serve on our Board of Trustees, Board committees and Women's Board.

Their spirit is the backbone of our continuing operations, a valued support on which our professional staff relies.

Each month, we acknowledge the outstanding Volunteers of the Month in our lobby, but those volunteers represent all who commit their time and interest to create a great theater experience for everyone who's come to see this show.

If you have friends or relatives who volunteer generously at Weathervane, we hope you'll take a moment to thank them for their help and their support of the cultural enrichment of our community. Better yet, join them! Call us and we'll help you win your own share of the applause for a "jolly good show," an experience that offers unique challenges with every performance.

Share the Annual Chanticleer Celebration

Shortly after the final production of each season, Weathervane volunteers and friends share an exciting party to acknowledge outstanding performances by performers and technical volunteers. The top performers are awarded rooster statuettes—Chanticleers—in recognition of their work, as voted by Chanticleer "judges" who have seen all productions during the season. It's a great night to get together, share hopes, fun and festivities and is open to all.

If you'd like to take an additional part in Chanticleer night and serve as a juror to vote for the award winners, all that is required is your affidavit that you have seen all seven shows during the season, and your choices for outstanding lead

performances by a male or female in a drama or comedy, outstanding support performances, and outstanding lead and support in a musical as well as choices in technical achievement. Chanticleers are also awarded for Properties, Lights, Costumes and Sound Design, plus Best Production of the season. In addition to performance and production awards, the event also recognizes outstanding volunteers of the year.

Chanticleer ballots are available during the run of the season's final show in July or August each year. We welcome regular theater-goers who'd like to take part in the jurying and join us for the biggest nail-biting party of the year. For information, please call our office.



Put On Your Own Show

Let our space be your space for company sales meetings or seminars. Club or organization meetings, even weddings, can often be conveniently staged at Weathervane! Tell us what you may require and we'll help you with arrangements at reasonable rental rates when productions or construction are not going on at the theater. Our kitchen facilities and technical equipment may help you set up a very important gathering. For information, call (330)836-2323.

Organization Benefit Opportunities

A benefit night or matinee at Weathervane can add funds to your club or organization treasury and could be an exciting annual event. Check the schedule of this season's productions. Perhaps one of the shows will dovetail with the aims and purpose of your group.

Discounted tickets for groups of 15 or more may be sold at a profit or passed along to your members. To create a dramatic fund-raiser or special celebration, you may also plan for catered refreshments. Your fund-raising chairman can get further details on a benefit night at Weathervane by calling Front-of-House Coordinator, Keith Campbell.

Boutique Treasures

Our lobby Gift Boutique is a fund-raising project of Weathervane Women's Board. Shop from one hour before curtain time or during intermission to find exciting jewelry, watches, bibelots, music boxes, and other unique items and objects for yourself or for gifts. Every purchase helps make good

things happen at Weathervane. Prices are extremely reasonable and the items on sale include a delightful variety from clowns and animal figures to pens, pins and earrings. Our Boutique volunteers will also assist you with information on gallery art works which are for sale.

Gift Certificates — Always Available

Whatever the occasion, a Weathervane Gift Certificate will fit! Please friends or family members with a night (or nights) of live theater. Weathervane Gift Certificates may be issued in any amount you choose. All the recipient needs to do is to call for reservations to the preferred perform-

ance. We'll do the rest with a memorable production during our season. Just ask for a Gift Certificate at the Ticket Office. You may pay with check or charge card to give a Weathervane gift you know your friends or family will applaud.

Come in and
try our delicious
Mexican food.

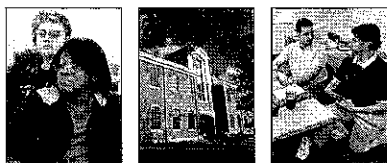
El-Canelo II



1730 Merriman Road
(330) 865-9537

15% Off Your Total Bill

El-Canelo II • Not valid with any other offer.
Expires July 31, 2003



The Weekend College

Weekend
College

- Five enrollment opportunities throughout the year
- Classes meet EVERY OTHER weekend
- Eight majors to choose from

Call (330) 569-5161 or visit our
website at www.hiram.edu/wc

The Weekend College at

Hiram
College

Researching your future?

EXPLORE WESTERN RESERVE ACADEMY

- Ninth oldest boarding school for grades 9 - 12
- Exceptional Faculty
- Small Classes
- Beautiful Campus
- Coed with students from 22 states and 16 countries

Featured in
*U.S. News &
World Report*



**WESTERN RESERVE
ACADEMY**

115 College Street, Hudson,
Ohio 44236 • 330.650.9717
www.wra.net



An essential resource
for the arts.



www.ascpl.lib.oh.us



*Weathervane Playhouse
thanks*

*Tiffany Bakery
for the beautiful opening
night cakes.*

Tiffany's Bakery
Elegant Selections



Wedding Cakes



330-753-0017

2176 Romig Road
Akron, OH 44320

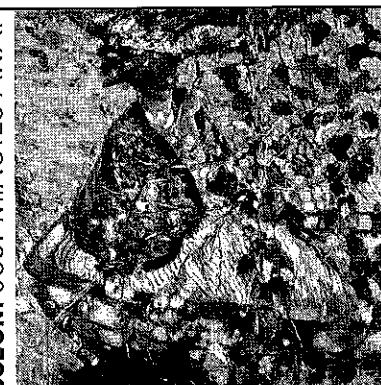

STEINWAY & SONS

The World's Finest Piano

Steinway Hall - Akron

715 East Buchtel Avenue • Akron, OH 44305 • 1-800-356-0437 • 330-535-6070

A WORLD-CLASS MUSEUM JUST MINUTES AWAY



2002-2003 EXHIBITIONS

**My Reality: Contemporary Art and the
Culture of Japanese Animation**
Sept. 21, 2002 - Jan. 5, 2003

**Rodin: Selections from the Iris and
B. Gerald Cantor Collection**
Jan. 25 - May 18, 2003

**FREE ADMISSION
OPEN EVERYDAY**

**Akron
Art
Museum**

Frederick C. Frieske,
Through the Vines, around
1908. Oil on canvas

70 East Market Street, Akron, Ohio 44308-2084
330.376.9185 www.akronartmuseum.org



Weatherwane Traditions

Meet the cast. It's a Weatherwane tradition that, after most shows, many of the cast members may spend a few minutes in the lobby area to meet and greet friends from the audience. It's your chance to thank them for their performance.

Intermission Tea is served with our compliments by our volunteer hosts and hostesses. Please enjoy a cup with us. Soft drinks are available at a nominal cost.

Opening Night Receptions welcome our audiences on the first Friday night of each production. We'll provide light snacks and refreshments after the show so you can share that "first-nighter" feeling.

For your sweet tooth, snacks are available for purchase before the show and during intermission. Refreshments are not permitted in the auditorium.

Beware of the Dreaded No-Show

Have you ever seen empty seats at a *sold out* sporting event or concert? Weatherwane has the same problem. Single-ticket buyers and subscribers who may have exchanged from another performance wonder why they weren't given those prime empty seats for the evening.

When you buy a subscription, you are *promising* to come to the theater for that ticketed performance and we hold your seat(s). These subscription seats are held until intermission. This, additionally, makes it impossible to tell if a performance is ever really *sold out* and annoys ticket buyers who see that they could have been seated in a better spot.

Subscribers: Please call the Ticket Office at 836-2626 if you will not make your ticketed performance. Thanks.

Money-saving super

Super Coupon Books

Help You Save!

coupon books are available all season. Booklets contain eight coupons and serve as pre-paid admissions for mainstage series productions. Use them one-at-a-time or all at once!



Where Theater Comes Alive!

Membership Helps Us Grow

Individuals and businesses who believe strongly in the value of community theater to enrich the area are always welcomed as new or renewing members of Weatherwane Community Playhouse. For those whose names are listed in the program, there are many benefits, not the least of which is the pride you can share in supporting the mission of live theater's education and entertainment values.

Your support and commitment are welcome and appreciated any time and is needed now more than ever. For those who are already members, we suggest that an increase in your membership may be an idea whose time has come in the face of dwindling government resources.

If you truly enjoy live theater, you'll be playing a vital part every time the lights go up for each show on the Weatherwane stage and we can honestly say that the show couldn't go on without you.



Who Gets On Stage at Weatherwane?

The performers you see on the Weatherwane stage come from throughout the greater Akron and surrounding areas. They're volunteers, just like the many men and women who supply backstage talent to make sure the show goes on performance after performance. They've committed themselves to four to six weeks of rehearsals plus performances, and their greatest reward is your applause.

Many performers come to our shows with substantial theatrical experience. Others may be new to the stage. Frequently we find that talented newcomers to our area find that Weatherwane is a great way to make new friends especially if they've been involved with community productions in their former home town.

Auditions are open to all and our non-traditional casting policy opens the way for performance opportunities for ethnic minority actors and others who may be physically or mentally challenged. Except in cases where race, gender, age or disability is essential to the play, all roles are cast on the basis of talent and sincerity of purpose.

To find out how you can get on stage, check the newspaper for audition dates and times or call Weatherwane at 330-836-2626 if you are interested in auditioning for a role in one of our upcoming productions or in a Youth

Theater production. We'll tell you about requirements.

Weatherwane shows are never "pre-cast." When you've been in a show or auditioned, your name will be included in our file so we can send you future audition notices. Some guest directors prefer to set appointments for audition times and may ask that you come prepared with a brief monologue, improvisational subject or musical number. Copies of plays scheduled or audition scenes are often available for a nominal deposit.

When you arrive at the theater on audition nights, you'll learn about the rehearsal and performance schedule ahead. You may also register as a production volunteer if you're interested in learning about the technical opportunities in the show.

You may be asked to return for callbacks and will be notified of the director's cast selection as soon as possible. Please note that if you don't win the role you've wanted so badly, it may not necessarily reflect on your talent. The director's choice of cast members must take many factors into account to develop the proper "relationships," style and reality of the ensemble. Don't be discouraged. Come try again. The next show may suit you even better!

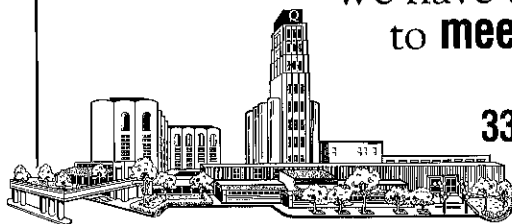


Meetings, or Banquets or Holiday Parties

10...100... 500... 1000... 1500... people

We have the party rooms
to **meet** your needs

Contact Us...
330.253.5970



Crowne Plaza® Quaker Square ♦ Downtown Akron, Ohio 44308
Call 330.253.5970 or visit us on the web www.quakersquare.com

DON'T COME TO MALONE

because of our passion for Christianity in the arts.

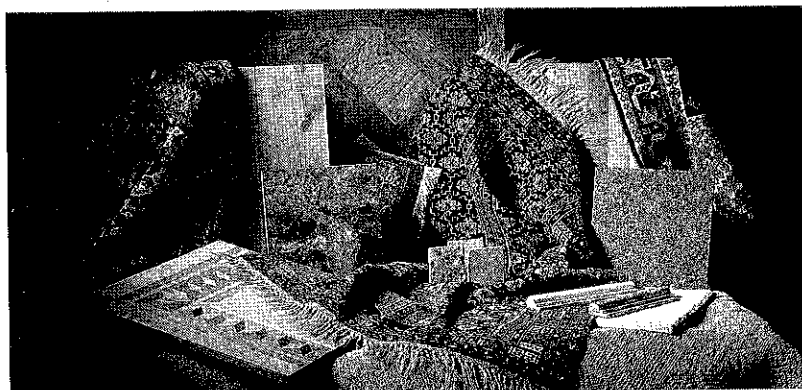


COME BECAUSE OF YOURS.

You love Jesus. You love the arts. You know that your passion for the arts can be used to reach others for Christ. So do we. For example, wait until you see Malone's program in Commercial Music Technology. You'll study under professional musicians like Mark Townsend (pictured above), former guitar player for dcTalk! Get ready to be challenged in a whole new way. Experience what true success is in your spiritual walk, academic career, and life.

Get to know us at www.malone.edu
or call 1.800.521.1146

MALONE
COLLEGE
CHRIST'S KINGDOM FIRST



Flooring to applaud.

See a thousand exciting options, including
luxurious Anso Nylon® carpeting, at
Northern Ohio's largest flooring showrooms.

WCCV
FLOORING DESIGN CENTER

Anso
Caress
100% nylon. Naturally green. www.ansocaress.com

1531 Commerce Drive, Stow, OH 44224 T: 330-688-0114
5732 Dressler Road NW, North Canton, OH 44720 T: 330-494-4726
www.wccv.com Store hours: M & Th, 10-8; T, W, F, S, 10-6



I Want to Know More About Opportunities for Involvement at Weathervane

Complete and detach this form and return it to the Ticket Office or mail to:
Volunteer Opportunities, 1301 Weathervane Lane, Akron, OH 44313-5186

NAME _____

ADDRESS _____

CITY _____ ZIP _____ PHONE _____

I am interested in the following areas: (Check as many as you wish)

<input type="checkbox"/> Acting	<input type="checkbox"/> Costuming	<input type="checkbox"/> Box Office
<input type="checkbox"/> Set Building	<input type="checkbox"/> Orchestra	<input type="checkbox"/> House Managing
<input type="checkbox"/> Painting	<input type="checkbox"/> Sound	<input type="checkbox"/> Play Reading/Selection
<input type="checkbox"/> Usher	<input type="checkbox"/> Lighting	<input type="checkbox"/> Board Membership
<input type="checkbox"/> Backstage Crew	<input type="checkbox"/> Classes	
	<input type="checkbox"/> Fund Raising	
<input type="checkbox"/> Other _____		

☐ Best time to reach me at the above phone number _____

☐ I am a subscriber. ☐ I am a donor.

I HAVE AN OPINION...

About tonight's play _____

About the current season _____

About future seasons _____

I have a fund-raising idea. _____

We appreciate, and often respond to, opinions offered about our work. Be sure to fill in your name and address above if you wish a response or would like to be contacted.



What Can You Do as a Weathervane Volunteer

Here's a quick introduction to the responsibilities volunteers undertake to make our shows work night after night. If you'd like to try your hand at any of these jobs, please call our Production and Volunteer Coordinator, Maryanne Cotter, at 330-836-2323. Volunteers with 100 hours or more of service are eligible for a special Weathervane membership!

★ **Stage Management** - Duties include assisting the director throughout the rehearsal period, calling cues, keeping backstage safe and orderly, and coordinating the technical needs of the show with the actors. A fulfilling responsibility for those who enjoy planning, communicating and taking charge. Once the director's work is done, it's the Stage Manager who runs each performance.

★ **Set Construction** - Use your building skills, carpentry or painting techniques to help make illusion come to life. We appreciate all the help we can find to design and build sets, move them and tear them down after a show to make new ones.

★ **Costumes** - Designers and workers are vital. We need skilled and even unskilled seamstresses to make or alter costumes, create patterns, care for costumes during a show and keep our wardrobe department organized. Add your design ideas or learn from other hard-working volunteers.

★ **Lighting** - Experience is a plus, but you can learn by assisting others who know computers and electrical requirements. We'll train eager volunteers to help hang, focus, and add color to lighting instruments. We'll also teach you how to run the light board and follow spots. You'll take pride in knowing that nobody can see the show without you.

★ **Sound** - Create the music and sound effects tapes that enrich the aural environment for each show or add "live" backstage sound. Run the sound system

for technical rehearsals and productions. We'll help you learn.

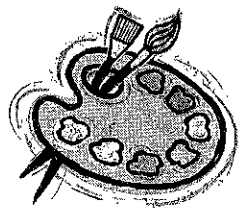
★ **Properties** - All the items that help "dress" a set and all those used by actors in rehearsal and performance (from tea sandwiches to "deadly" weapons and "shattering" windowpanes) must be borrowed, built or cooked. We need many volunteers to work on each performance. If you are clever at building things or have friends with "neat stuff" they'll loan, volunteer here.

★ **Box Office** - If you enjoy dealing with the public, we can use your help during office hours and on show nights to assist in taking money and answering the phone to take reservations.

★ **Ushering** - Welcome audience members with your smile, showing them to their seats, passing out programs, and serving refreshments at intermission. Your help is always welcome.

★ **House Manager** - The theater's unofficial representative greets the audience, tears tickets and guides theater-goers to ushers for seating. You'll work with the stage manager to coordinate the timing of intermissions and remain in the lobby throughout the show to handle any emergency.

★ **Office Volunteer** - Put a few morning or afternoon hours to good use answering phones, taking reservations, helping with mailings, working with staff, and greeting customers and visitors. Many friendly people are needed to help.



Given the fact that we're
in finance, we've always
been partial to Monet.

Bank One is proud to support the arts.
And not just the impressionists.



www.bankone.com
50 S. Main - Akron

Member FDIC.
©2002 Bank One Corporation.



The arts
start here.

Art starts with inspiration.
Inspiration starts with new experiences.
New experiences are our business.
That's the Akron Advantage.

www.uakron.edu

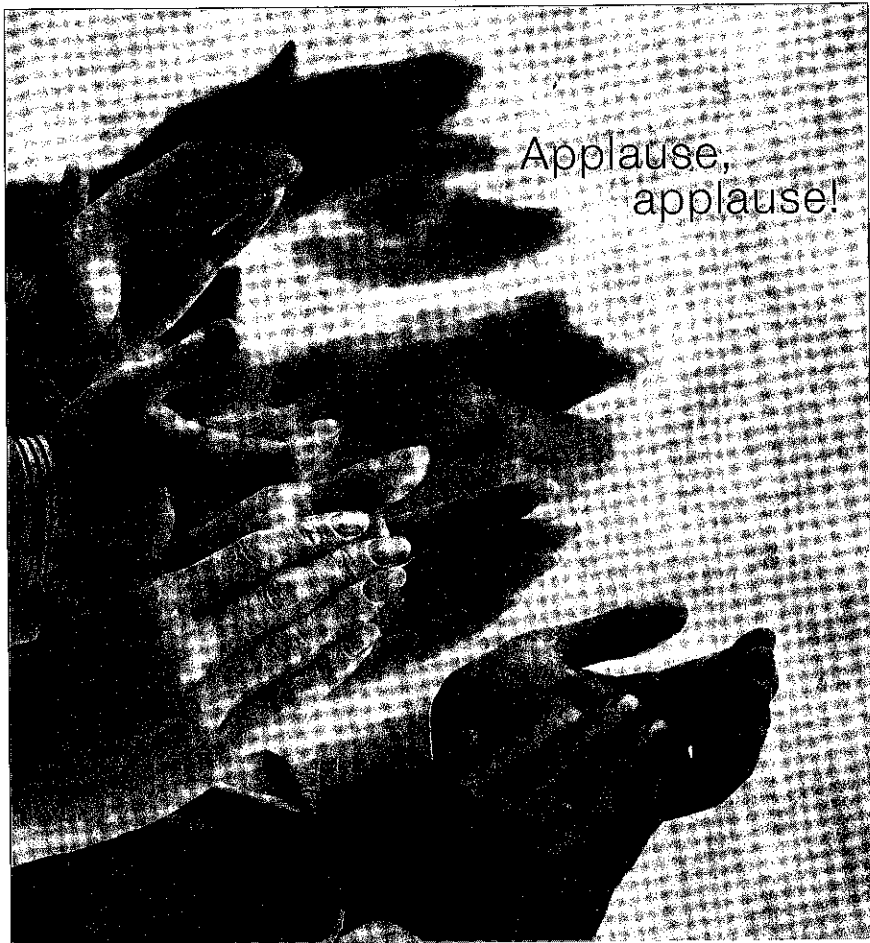


"At The University of Akron, we have set the stage for world-class excellence in the arts. By developing new generations of artists, partnering with arts organizations, and providing local venues for internationally-acclaimed theatrical and musical productions, we continue to help define the social and cultural landscape of Northern Ohio."

- Luis M. Proenza
President, The University of Akron

The
University
of Akron

The University of Akron is an Equal Education and Employment Institution



Applause,
applause!

At Key, we're proud to support The Weathervane Playhouse. Your performances raise the quality of life for everyone in our community. And that definitely deserves a round of applause.



**Achieve
anything.**

1.800.KEY2YOU®
Key.com

Banking • Investments • Insurance

Key.com is a federally registered service mark of KeyCorp. Securities are offered through McDonald Investments Inc., A KeyCorp Company and member NASD/NYSE/SIPC. Investments and insurance available through affiliates of KeyBank:

• NOT FDIC INSURED • NO BANK GUARANTEE • MAY LOSE VALUE