



A season of celebration!
Donna Bruce
Artistic Services Manager

WEATHERVANE COMMUNITY PLAYHOUSE

Where Theatre Comes Alive!

2002-2003

Sixty-Eighth Season



GYPSY

Book by Arthur Laurents • Music by Jule Styne • Lyrics by Stephen Sondheim

production no. 502

M A I N S T A G E

June 18 - July 20, 2003

On cue . . .

In step . . .

In tune . . .

Our thanks
to the
performing
artists of
northeastern
Ohio.

 **audio-technica.**

Audio-Technica U.S., Inc., Stow, Ohio
Audio products for home and professional use.
www.audio-technica.com

modern style...
old-fashioned service

KAUFMANN'S
All the right choices



68th Season

Weathervane Community Playhouse

1301 Weathervane Lane, Akron, OH 44313-5186
330-836-2626 Fax 330-873-2150 email: wcpakron@aol.com
on the web at www.weathervaneplayhouse.com

2001-2002 MAINSTAGE SEASON PRODUCTIONS

#497 - #502

September 18 - October 6, 2002

The Chosen

Drama by Aaron Posner & Chaim Potok
Based on the novel by Chaim Potok

October 16 - November 3, 2002

The Wiz

Musical based on L. Frank Baum's *The Wonderful Wizard of Oz*
Music & Lyrics by Charlie Small

January 15 - February 9, 2003

Arsenic and Old Lace

Comedy by Joseph Kesselring

February 26 - March 16, 2003

The Laramie Project

Drama by Moises Kaufman
& The Members of the Tectonic Theater Project

April 2 - 19, 2003

The Complete Works of William Shakespeare (Abridged)

Comedy by Jess Borgeson, Adam Long & Daniel Singer

June 18 - July 20, 2003

Gypsy

Book by Arthur Laurents
Music by Jule Styne
Lyrics by Stephen Sondheim
Program subject to change

YOUTH/FAMILY PRODUCTIONS

July 27 - August 11, 2002

The Emperor's New Clothes

by Charlotte Chorpenning
Story by Hans Christian Anderson

November 23 - December 22, 2002

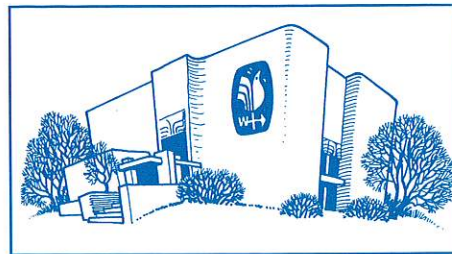
Joseph and the Amazing Technicolor Dreamcoat

Musical by Andrew Lloyd Webber

March 15 - 30, 2003

Hamlet

by William Shakespeare



WEATHERVANE WOMEN'S BOARD

presents

The Brementown Musicians

Performed by the Piper Puppets
April 26, 2003



Patron Information

★ **Emergency Exits** are located at the left front of the auditorium and the left side of the lobby. Front door and main lobby side exits will also be used in case of emergency.

★ **Restrooms** are found just off the entrance lobby ramp at the rear of the auditorium. Both men's and women's restrooms are wheelchair accessible.

★ **Handicapped Services** include seating for a limited number of wheelchairs. Please notify in advance if needed. Exterior and interior ramps make access easy for wheelchairs.

★ **Assistive Listening Devices** are available at the Box Office for the hearing impaired. This service is available thanks to the generosity of Virginia and J. Robert Wilson. In addition, some performances at Weathervane may feature American Sign Language or audio-description translations.

★ **Patrons** who are expecting calls should leave name and seat number with the House Manager. Please turn off your cell phones, pagers and audible watches.

★ **Beverages and Food** may not be taken into the auditorium during performances.

★ **Use of Cameras, Tape Recorders, TV cameras** is prohibited during performances.

★ **Curtain time** - Every effort is made to begin shows promptly at 8 p.m. for evening performances and at 2:30 p.m. for Sunday

matinees. We appreciate audience courtesy in arriving on time.

★ **Latecomers** will be quietly seated at the rear of the auditorium during a suitable break in the play if space is available and may take their reserved seats after intermission.

★ **Exiting the Theater** - For safety and as a courtesy to other patrons and the performers, please remain seated until the auditorium lights are on at intermission or after the show. Auditorium doors will not be opened until the house lights are on. Parking lot illumination assures that getting to your car will be easy and secure.

★ **Smoking** - Weathervane Playhouse is a smoke-free facility. Smoking is permitted outside the building.

★ **Lost and Found** items will be held at the Ticket Office until claimed. Please inquire about them during business hours.

★ **Comments** from audience members are always welcomed with interest. Please feel free to write to Weathervane or call us to express your views and opinions about our productions, play selection or other matters. We appreciate hearing from you and will respond. Please send your comments to: *Executive Director, Weathervane Community Playhouse, 1301 Weathervane Lane, Akron, OH 44313-5186.*

BOXES PLUSTM

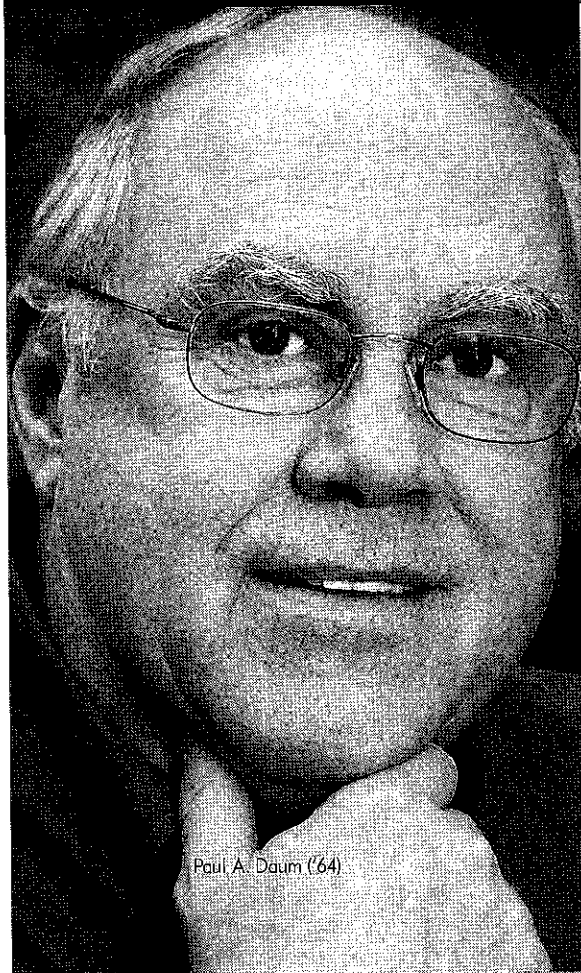
Fairlawn Town Centre
330-836-3377

Stow Retail Park
330-342-1226

Akron's largest selection
of unique greeting cards

Full-service gift wrapping,
packaging and shipping

Avoid paying up to 70%
in estate and income taxes.



Paul A. Daum ('64)

Sound financial planning
allows you to leave more
for your family and make
the gift of a lifetime to
The University of Akron.

Contact David Horn
Director of Planned Giving
The University of Akron
330-972-6870, or
e-mail dhorn@uakron.edu.
Ask for the booklet
entitled Giving Through
Retirement Plans.

**The University
of Akron**

The University of Akron is an Equal
Education & Employment Institution.

THE PLAIN DEALER CLEVELAND.COM
BROADWAY SERIES
www.playhousesquare.com 2002-2003

Disney's
THE LION KING
June 27 -
August 17, 2003
State Theatre
ON SALE FEBRUARY 8TH

THE PRODUCERS
the new
MEL BROOKS
musical
October 1 - 20, 2002
Allen Theatre

ROBERT
GOULET in
SOUTH PACIFIC
Nov. 5 - 17, 2002
Palace Theatre

**STONES
IN HIS
POCKETS**
January 7 - 19, 2003
Palace Theatre

42ND STREET
Feb. 18 -
March 2, 2003
Palace Theatre

THE FULL MONTY
March 25 -
April 6, 2003
Palace Theatre

LATE NITE CATECHISM
Starting in January, 2003
Your instructor
will notify you
of the class
location!

FOR TICKETS CALL:
216-241-6000

Groups of 20 or more, call 216-771-4444
www.playhousesquare.com

Continental Airlines

DESTINATION: PLAYHOUSE SQUARE CENTER...WE BRING THE WORLD TO YOU!



From the Barn to the Valley A Brief Weathervane History



From 1935 until 1951, Weathervane was housed in a modest carriage house barn on Marshall Avenue in Akron. The Barn, as it was known, has long since been destroyed but there are still a few people who recall its cramped quarters and especially the energy and devotion of the four ladies, Grace Hower Crawford, Laurine Schwan, Helen Troesch and Muriel MacLachlan, who believed that Akron deserved the best in theater and that volunteers could make it all happen. The plaque in our lobby lists the names of the other founders who shared their commitment and who joined their ambitious mission, producing everything from light comedy to Shakespeare and opera.

Though the Barn is now only a memory, its rooftop weathervane gave the theater its name and logotype character, the Chanticleer.

Except in 1948 when located at the Pythian Temple, the Barn was home to Weathervane until 1951. Then the organization renovated a building on Copley Road and became a more accommodating 100-seat facility. In 1960, Weathervane hired its first professional director, Bob Belfance, who served until 1992. Along with long-time custodian/ticket office manager, Nora Scott, the two-person staff relied on volunteer support. Paid guest directors and children's theater instructors served in part-time positions and Weathervane existed on a lean budget. Ticket office receipts, along with donations and community support, helped Weathervane meet expenses and created a modest endowment fund. Volunteers still nourish all of Weathervane's activities.

In the mid-1960s, a fund-raising drive resulted in construction of the present 263-seat facility which opened in 1970, one of the first enterprises at the head of the corridor into the Cuyahoga Valley National Recreation Area. Thanks to Grace Crawford's legacy, the mortgage has since been paid off. Growing audience demand for live entertainment and theater education continues to underscore Weathervane's needs for increased community support.

In its nearly seven decades, Weathervane has constructed, torn down, recycled, painted and refitted stage settings for more than 500 productions (when Stage Two and Youth Theater productions are included). We've stitched up hundreds of costumes, created lighting magic by the multi-watt, crafted reality out of scores of stage properties and, most of all, shared the talents of well over a thousand amateur performers, who take their performance curtain calls to the applause of more than a hundred thousand theater goers. This effort is the result of volunteer dedication based on the founders' original philosophy that "all who can contribute are welcome."

Our volunteer archivist, Cue Fleming, has compiled the impressive list of productions back to 1935, a record of the dedication of those who have given their time to present each show to please the audiences who seek entertainment excellence each time the lights go up. Share the link to Weathervane's past by joining in the applause for today's performance.

NOTE: Weathervane always appreciates donations of past programs, photographs or other theater memorabilia which can be added to our archives kept at the University of Akron. Thank you.



Ticket Information

★ **Tickets** may be purchased by telephone when you call 330-836-2626 Tuesdays through Fridays from 10 a.m. to 5:30 p.m. You may also purchase tickets in person during these hours. On performance Saturdays only, the Ticket Office is open from 11:30 a.m. to 5:30 p.m. The Ticket Office is also open one hour prior to all performances and remains open through the first intermission.

★ **Telephone reservations** must be charged to a Visa, MasterCard or Discover credit card. Reservations are also required when using coupons from your Weathervane Super Coupon book, complimentary tickets or coupons offered from any other cooperating arts organization. Please arrive at the Ticket Office at least 20 minutes before curtain time to pick up your tickets. Any unclaimed tickets will be released for sale to waiting ticket buyers five minutes prior to curtain at the discretion of the Ticket Office Manager and volunteers.

★ **Special seating** - Please inform us if you have seating preferences, or require special attention due to visual, auditory or other physical needs. We'll do our best to accommodate you, but please remember orders are filled on a first-come, first-served basis with season subscribers and advanced group sales taking first priority.

★ **Super Coupon holders** are reminded that coupons do *not* ensure seats for a specific performance. Please call the box office early to reserve seats with these prepaid coupons.

★ **Season Subscriber Exchange** - Please call the Ticket Office at 330-836-2626 if you wish to exchange your subscription seat for another performance of the same show. Exchanges must be phoned in at least 24 hours prior to your originally

scheduled performance. We can't always guarantee the same seats but we'll give you the closest available replacements. An upgrade fee will be charged when changing subscription seats from a Preview Night to any other performance. *If you cannot use your subscription seats, please call us at least 24 hours in advance to release them. We will recognize this as a donation to Weathervane.*

★ **Student Rush Tickets** go on sale 30 minutes before curtain time allowing students with valid ID to purchase remaining tickets for half price on the night of performance, pending ticket availability. These tickets cannot be reserved in advance.

★ **Complimentary Tickets** for cast members and production volunteers require reservations and may be used only on designated performances. Complimentary tickets distributed to special donors also require reservations but may not be restricted to specific performances. Please let us know you wish to use a complimentary ticket when you telephone for a reservation.

★ **Discounted Group Reservations** are available for groups of 15 or more. Call Weathervane at 330-836-2626 to learn how you can entertain friends, associates, or clients with a night at the theater or to plan a fund-raising event for larger groups.

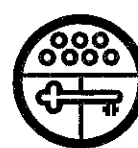
★ **Gift Certificates** are available through the Ticket Office at any time in any amount you choose.

★ **Recycle your playbills** - Anyone who doesn't wish to keep the playbill as a souvenir may drop it in our recycling box near the main entrance. We request that you do not bend, fold or deface the playbills as we will use them again for subsequent performances. Thank you.



“One of America’s
Best Hospitals”

**AKRON GENERAL
MEDICAL CENTER**



**Old
Trail
School**

The Pathway to
Quality Education

Preschool through Grade Eight

2315 Ira Road in Bath, Ohio near Hale Farm 330-666-1118 Visit our Web site at www.oldtrail.org



POINTE WEST PERFORMANCES

*“Eclectic Repertory
for the Serious Dancer”*

Call (330) 668-1254 for information
about our 2002-2003 Repertory Season
& Audition Dates



Ohio Arts Council

Building Ohio Through the Arts

Supporting organizations
with state tax dollars
to encourage
economic growth,
educational excellence
and cultural enrichment.



Share the Arts

727 East Main Street
Columbus OH
614/466-2613
www.oac.state.oh.us

Visit today.

Arts in Ohio.com

Ohio's state and local arts organizations are responsible for the cultural life of Ohio. And that's why it's so important to you.

OOPS

NOT SPOKEN HERE.



**BUILDING
COMPANY LTD.**

ESTABLISHED 1945

No sheepish grins. No excuses either.
Construction management or
design/build services for your project.
On time and on budget.
End of story. Call Don Taylor, CEO.

123 S. Miller Road, Akron, Ohio 44333
330-867-2400 Fax: 330-864-4566
info@weltybldg.com
www.weltybldg.com

THE CREATIVE BUILDERS



Women's Board

The Women's Board was formed in 1938 to "offer voluntary service and financial assistance to the Playhouse" and has been a vital part of Weathervane functions ever since. Women's Board has energized the youth education program, sponsored productions, spearheaded fund raisers and paid for many of the amenities audiences and production volunteers continue to appreciate in the Green Room and kitchen. Members of this active group are invaluable as hostesses, office helpers and hard workers on backstage projects. The Women's Board sponsors an annual puppet presentation for children and also operates the Gift Boutique and art gallery as on-going fund sources.

Weathervane Women's Board welcomes new members who serve an apprenticeship allowing them to explore the full spectrum of Weathervane activities in which they may wish to participate. Membership is open to all. If you are interested in becoming part of this vibrant organization, please let us know. Leave your name at the Ticket Office or write: Weathervane Women's Board, c/o Weathervane Community Playhouse, 1301 Weathervane Lane, Akron, OH 44313-5186.

2002-2003 Women's Board Officers

Pat Obenour	President
Jean Questel	First Vice President
Susan Speers	Second Vice President
Alberta Carlin	Corresponding Secretary
Nancy Zeigler	Treasurer
Evelyn Stiggers	Assistant Treasurer

2002-2003 Women's Board Committee Chairs

Marci Paolucci	Art Gallery
Mary Wolfman & Barb Kistler	Boutique
Barbara O'Connor	Boutique Treasurer
Henrietta Cook & Dorothy Kies	Costumes
Lois Murray & Mina Agrawal	Hostesses
Alberta Carlin & Pat Weill	Newsletter
Marta Williger & Barbara Stevic	Cast Suppers
Marilyn Heagerty	Office Volunteer Scheduler
Lois Simmons & Linda Shearl	Hospitality
Liz Raines & Thelma Coss	Puppet Show
Betty Williams & B.J. Zeigler	Membership

The Women's Board welcomes new members.



Patron Generosity

Weathervane appreciates the continuing strong support of individuals, corporations, foundations and other donors who help finance the theater's operations, capital improvements and endowment program. Weathervane is classified as a 501(c)(3) organization and contributions are tax deductible. Following are some of the many ways in which you can take pride in your support of the art of theater in our community.

★ Become a Weathervane Member.

Your annual support makes you a voting member of Weathervane Community Playhouse. You'll receive discounts on educational programs and other benefits, based on the membership level you choose. Members are invited to Weathervane's annual meeting and to other special events such as the Chanticleer Awards Banquet. Memberships are renewable annually, beginning at \$50 (Contributing), and continuing at Sustaining, Patron, Silver, Gold and Platinum Levels. Membership is actively solicited in the fall but is accepted at any time. Members are recognized in the Playbill.

★ **Give a Special Gift To Say You Care.** Special donations may be made at any time to memorialize a friend or relative whose interest in Weathervane was significant to his or her life. You may also recognize and celebrate important dates or current achievements of relatives, friends or associates.

★ **Remember Weathervane in Your Heart and in Your Will.** What better way to carry on your tradition of support to Weathervane than by a planned gift. By taking advantage of the tax laws which encourage charitable giving, the U.S. Government will share in the cost of your gift to Weathervane. Your gift can fulfill a specific purpose or project while providing your estate with tax savings. To help ensure that Weathervane will continue, please contact our Executive Director for more information.

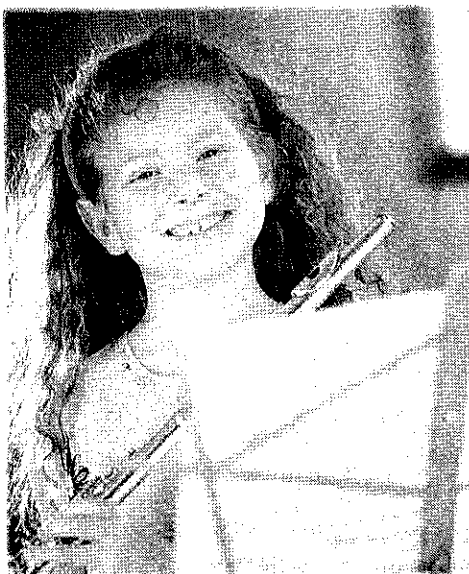
★ **Check For Matching Gifts.** Many national and local corporations will match your donations to Weathervane,

increasing your generosity to the theater. Please check whether or not your company participates in such a program.

★ **Designate Gifts To Local Foundations.** Several of this area's larger foundations accept memorial and tribute gifts in the name of specific organizations such as Weathervane Community Playhouse. Such gifts help assure continuing grants to the theater's operations and special projects. We are enormously grateful for the impressive history of foundation support in this community.

★ **Sponsor or Underwrite a Production.** Our productions may be underwritten by local corporations or foundations. Benefits can include private "command performances" and special receptions for employees and friends when your business chooses this important method of support. Please call 330-836-2626. We'd like to discuss this kind of opportunity with your executive officers.

★ **Capital Project.** The new construction segment of the Capital Project included a scene shop with basement storage, a 2nd-floor classroom, a 2nd-floor rehearsal hall, soundproof corral with construction of a production booth and office, elevator and fly gallery pocket above the stage. Donations for Stage Two of the project continue to purchase classroom furnishings, update the lighting system, purchase and install the rigging system for the fly gallery, renovate the lobby and replenish the Capital Fund for maintenance and repairs through 2010.



The clear
choice for
children



Children's
Hospital Medical Center of Akron
One Perkins Square
Akron, Ohio 44308-1062

Dress Up With Weathervane

Churches, schools, individuals and other theater groups may find rentable costumes or theater properties and stage dressing for their own productions in the Weathervane wardrobe and set storage areas. Please call 330-836-2626 to arrange for a consultation on your special production needs.



Graf Growers
Garden Center ~ Farm Market

1015 White Pond Dr. Akron
330-836-2727 www.grafgrowers.com



HERE'S TO ANOTHER HIGH-ENERGY PERFORMANCE.

AT FIRSTENERGY, WE APPLAUD THE MANY CONTRIBUTIONS THE ARTS MAKE TO ENRICH AND BRIGHTEN OUR COMMUNITY. WE'RE PROUD TO SUPPORT THE EFFORTS AND DEDICATION OF ALL THESE FINE PERFORMERS.

FirstEnergy

2238



Luigi's


"An Akron Tradition Since 1949"

- Award Winning Food
- Casual Dining
- Old World Elegance

Featuring Our Famous
Homemade

- Pizza
- Lasagna
- Antipasto

OPEN 7 DAYS
105 N. MAIN ST.
330-253-2999



Another
bright spot
in the
Arts
in
Akron

DON DRUMM
Studios &
Gallery

Over 800 top
artists represented

437 Crouse St.
Akron
330-253-6268
Weekdays 10-6, Saturday 10-5



Theater Education at Weathervane



Youth Education

Weathervane's mission to provide children's theatrical education began with Junior Weathervane classes in 1937. The education program has continued to grow since then with workshops and classes, plus production opportunities for children. In the 2001-2002 season, we offer professionally taught classes in acting, stagecraft, musical theatre and improvisation for children up to age 18. Fall and spring classes are held on Saturdays at Weathervane. In addition, two-week workshops for children are planned throughout the summer months. The cost is minimal with a limited number of scholarships available for motivated students and discounted fees for Weathervane members.

Children from throughout the community may also audition for roles in Youth/Family productions. Casting is not dependent upon class enrollment. Participation is an extension of valuable training in every facet of production from the audition process to technical and performance experience. Family members may also have learning opportunities by participating in such productions.

Weathervane works with area schools by providing outreach information and study guides in our **Project STAGE** program, which brings public and private school students to see as many as three productions each season. This season, *The*

Chosen, The Wiz, The Laramie Project and *Hamlet* will be featured in the **Project STAGE** events. Tickets are only \$8.

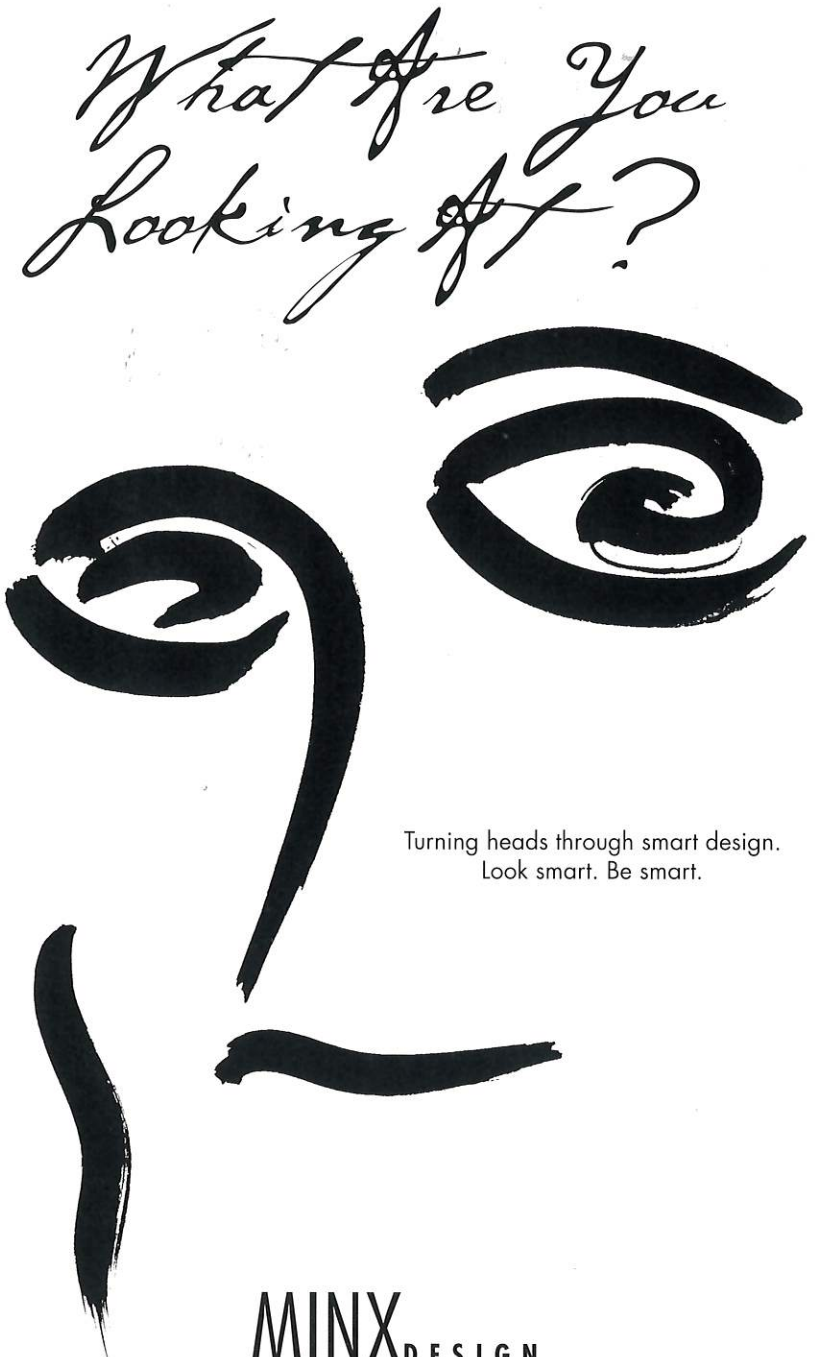
For information about classes or audition schedules for Youth Theater productions, please call our Education Coordinator at 330-836-2323.

Adult Classes and Theater Training

Professionally taught fall and spring Adult Theatre Education classes include Scenic Design, Stage Lighting, Directing, Improvisation and Classical Drama. These classes help both new and experienced actors to expand their own performance and public speaking skills. Classes are held at the theater and costs are affordable. Call 330-836-2323 ext. 17 for details.

Learning On the Job

Every volunteer participant in a production actually becomes part of Weathervane's continuing education process. You'll learn from more experienced actors and technical helpers who share the creation of production and performance. If you don't have time for structured classes, sign on to become a crew member or performer. We'll help you expand your knowledge of backstage and onstage responsibilities along with your own talents and imagination. Please call us at 330-836-2626 and let us show you how to give new wings to your talent and new meaning to your time.



What Are You Looking At?

Turning heads through smart design.
Look smart. Be smart.

MINX DESIGN

330.762.4126 • 1.888.GET.MINX



Our Lady of the Elms

A Dominican Education for Girls.

Be Anybody. Start Here.

1220 W. Market St. • Akron, Ohio 44313-7108 • (330)-867-0918 • www.ourladyoftheelms.org

NPR. Classical.
Other smart stuff.
89.7 WKSU

A Service of Kent State University

**BROADWAY in
AKRON**

BROADWAY IN AKRON AND BEYOND BROADWAY

**BEYOND
BROADWAY**

**E. J. Thomas Hall & Akron Civic Theatre
2003-2004 Season of Events**

An Evening with Lily Tomlin
Friday, October 3, EJ

Preservation Hall Jazz Band
Friday, October 17, CT

An Evening with
Jim Brickman
Saturday, October 25, EJ

CATS, 5 shows!
October 31-November 2, EJ

Mighty Wurlitzer
Organ Concert
featuring Rob Richards
Saturday, November 1, CT

Nissan Presents
Warren Miller's *Journey*
Saturday, November 15, CT

Riverdance, 8 shows!
November 25-30, EJ

Colors of Christmas
Thursday, December 11, EJ

TubaChristmas
Saturday, December 20
Free, CT

42nd Street, 8 shows!
January 20-25, EJ

Ladysmith
Black Mambazo
Friday, February 13, CT

Dance Theatre of Harlem
Friday, February 27, EJ

Mancini at the Movies
Sunday, February 29, CT

University of Akron
Dance Company
Thursday, March 11 &
Friday, March 12, EJ

The Mikado
by The Carl Rosa Opera
Saturday, March 13,
8 p.m., EJ

Fosse, 5 shows!
March 19-21, EJ

George Winston
Saturday, April 3, CT

Linda Eder
Saturday, April 3, EJ

The Full Monty, 8 shows!
April 13-18, EJ

Mighty Wurlitzer
Organ Concert
featuring Jim Riggs
Saturday, April 17, CT

Mannheim Steamroller
Tuesday, April 20, EJ

The University of Akron
Steel Drum Band
Saturday, April 24, EJ

Show Location:
EJ = E. J. Thomas Hall
CT = Civic Theatre

Call (330) 972-7570,
to receive a 2003-2004
Broadway in Akron
E. J. Thomas Hall &
Akron Civic Theatre
season brochure.

www.ejthomashall.com
www.akroncivic.com



See ALL FOUR Broadway in Akron shows for as low as \$89!

E. J. THOMAS HALL • AKRON CIVIC THEATRE • THE UNIVERSITY OF AKRON



Weathervane Professional Staff

ELYNMARIE KAZLE (Executive Director) begins her sixth season for WCP. She has spent 25 years in theater first as a stage manager then in producing, fundraising and as a public relations rep for theaters across the US. She's had the pleasure of working with a wide range of artists from Mikhail Baryshnikov to Michael Korie, Ed Asner to Chita Rivera in theaters such as San Diego's Old Globe, Sacramento Theater Company, LA Classical Ballet, Opera Columbus, Great Lakes (Shakespeare) and Brooklyn Academy of Music. Akron was important to Elynmarie early in her career when she served as lighting apprentice to Tom Skelton and Ohio Ballet in the early 1980s. Her diverse experience in Marketing/PR includes a stint with the Wall Street Journal. She is currently VP of Membership and Development of USITT, VP of the Akron Area Arts Alliance and the founder of the nationally-known Stage Management Mentoring Project. She lives in Akron with her husband Mark and son Banno.

JANIS L. HARCAR (Director of Marketing & Development) holds an M.A. in Arts Administration from The University of Akron and a B.S. in Music Education from Kent State University and has been a Weathervane staff member since 1993. She serves as the Artistic Director of the Ravenna Community Choir and Director of St. Paul Lutheran Church Choir also in Ravenna. Jan occasionally serves as Musical Director for local productions.

ALAN SCOTT FERRALL (Scenic Designer/Technical Director) began at Weathervane under the tutelage of John R. Thomas. Learning the skills necessary to work full-time in the theater, Scott was hired at Cuyahoga Falls High School as auditorium manager, where he spent the next six years. During that time, he was awarded a

Design Excellence citation from USITT for Carousel, and a place in Who's Who Among America's Teachers. He has also designed for many local high schools as well as for The Players Guild, Cleveland Signstage and Channels 45/49. Scott has earned two Chanticleer Awards, one as stage manager for Fences, the other as lighting co-designer for A Man for All Seasons. Scott also takes great pleasure in writing the end-of-the-season revue for the Not-Ready-for-Mainstage Players who appear at our annual Chanticleer Awards Dinner.

SEAN MCCONAHA (Director of Education and Producer of Youth/Family Productions) holds a dual major in Theater Performance and Pre-Law from West Virginia Wesleyan College and an M.A. in Theater from The University of Akron. He is a free-lance actor and director throughout Northeastern Ohio. Sean directed the OCTA award-winning production of *Romeo and Juliet* as well as the 1999-2000 season's Chanticleer winner for Best Production, *The King of the Kosher Grocers*. He lives in Canton with wife, Beth, daughters, Leda and Delaney and twins born June 4, 2003, Zoe Grace and Griffin Dean.

KEITH D. CAMPBELL (Supervisor Front-of-House & Patron Services) holds a B.A. in English from The University of Akron, where he served as editor of *The Buchtelite* and sang with the Akron Symphony Chorus. During the summers of 1995 and 1996, he interned in the box office at Porthouse Theatre Company. Keith has done post-baccalaureate studies in Arts Administration at The University of Akron. This is his seventh season at WCP.

JOHN COTTER (Business and Public Relations Assistant) has the duties that come with helping Jan and Keith in the Marketing and Box Office areas. He also serves on Weathervane's Production Board as Co-



Professional Staff continued

Chair of Auditions. John is a retiree of 36 years with Ohio Edison and has been a long-time volunteer of the Playhouse serving on the Production Board as its President and Co-Chair of Properties. He has also worked backstage for many productions and has won Chanticleers for Properties Design for four productions, his most recent being co-design of *The Philadelphia Story*. He is, however, most proud of his three grandchildren, Dana, Nicholas and Kristin.

KATHRYN A. KOHL (Assistant Technical Director) holds a degree in Elementary Education from BGSU and a Master of Business Management Degree from Aurora College in Aurora, IL. She began her volunteer career on the lighting crew of *Oliver!* and, since, has been on many lighting and set construction crews. She served as Properties Designer for *Dracula* and won a Chanticleer for properties co-design of *The Philadelphia Story*. Kathy also volunteers as Resident Master

Carpenter and Master Painter for the Theatre Department at Firestone High School where she recently was awarded the Helping Hands Award, and with the Show Choir program at Miller South School for the Visual and Performing Arts. Kathy lives in West Akron with husband Doug and their three children, Stephanie, Zachary, and Katie.

DREAJEAN L. BROWN (Data Services Manager) rejoined the staff in August. She holds a Master of Science Degree in Technical Education and a Bachelor of Science Degree in Education from The University of Akron. She retired from the field of education ~~57~~⁰² years ago and now is the ~~Office Manager~~ for the Ohio & Erie Canal Corridor Coalition. She is an active member of Delta Sigma Theta Sorority, Inc. Akron Alumnae Chapter. Drea spends her spare time with family and friends and enjoys reading, crocheting and traveling.

DIRECTOR OF ADMINISTRATION

Many thanks to Our Season Sponsors

Akron Publishing Company - Ad Sales
Minx Design - Graphic Designer
Ohio Arts Council - Season Sponsor
PAX TV 23 - Season Sponsor
Pucci's - Reception Sponsor
Single Volunteers of Ohio -
Reception Sponsor

Summa Health System - Sponsor for
Arsenic and Old Lace
Tiffany's Bakery - Opening Night cakes
Treva - Reception Sponsor
WKSU 89.7 FM - Season Sponsor

Single Volunteers of the Western Reserve

Ohio Singles Making a Difference in Our Communities
Summit County Chapter

Have a desire to help others while having fun & meeting new people?

Learn more about Single Volunteers by visiting our web site at

www.svohio.org

or send us an email at svsummitohio@yahoo.com

A Single person CAN make a difference!



Looking for a place to dine before the show?

El Canelo II

1730 Merriman Road (in the Valley)
330-865-9537
Come try our delicious Mexican food.

Open Mon. - Thurs. 11 a.m. to 10 p.m.
 Fri. & Sat. 11 a.m. to 11 p.m.
 Sun. 12 Noon to 9 p.m.

Luigi's

105 N. Main Street Akron
330-253-2999
 Open 7 days

An Akron Tradition since 1949
Award-Winning Food, Casual Dining
Old World Elegance featuring our famous
Homemade Pizza, Lasagna, Antipasto

Accessibility

Weathervane Playhouse is handicapped accessible. Ramps are available to the front doors, auditorium and seating.

Assisted-listening devices for the hearing impaired are available at the Ticket Office.

Large-Type program inserts are available at the Ticket Office. These copies are not full playbills but contain information unique to this production. These inserts are photocopied and are available in limited quantity.

American Sign Language interpretations are scheduled for selected Sunday performances.

Ohio Relay System 1-800-750-0750 TDD. Call to have your ticket order placed.



Weathervane Board of Trustees

Weathervane Community Playhouse is a non-profit 501(c)(3) corporation operated by a board of volunteer trustees representative of the general community. Regular monthly meetings of the Board of Trustees are open.

Officers

Dr. Steven P. SchmidtPresident
 Richard WorswickFirst Vice President
 Leslie LundSecond Vice President
 Jim HorvathTreasurer
 Ardith M. KeckSecretary
 Margaret J. DietzHistorian
 Thomas R. TrotterImmediate Past President

2002-2003 Board Members

Kathy Ashcroft	Jon Fiume	Doug Kohl	Patricia Obenour
Barbara Baskin	William Glaeser	Karen Lefton	Tom Stephan
Mark Blaser	Terry Gordon	Myron Lewis	Elinore Stormer
Clarence F. Carlson	Roy Hartz	Doug Mory	Mary Warhol
Tom Cousineau	Laura Kerchner	Sheila Motter	Nancy Wilson
Paul Daum, PhD	Mary Beth Kluge	George Moxon	

Advisory Board Members

Mary Adams	W. Scott Emerick	Libby Jacobs	Dr. Susan Speers
Chuck Ayers	Helen Fleming	Eric Jones	Bob Velotta
Bunny Ballance	Jill Forster	Ardith M. Keck	Shari Whitfield
Madeline Bozzelli	Dr. Penelope Frese	Dede Klein	Mary Whitmer
Stanley Brandt	Ian Haberman	Eileen Moushey	Mary Wolfman
Ann Brennan	Richard Harris III	Jim Nilsen	Mel Wolfman
Nancy Cates	Bob Hasman	Jo Ann Oelschlager	Mona Wolfman
Ron Cimini	Marilyn Heagerty	Margo Snider	June Zeno
Frank Comunale			

Production Board

Mark A. Zimmerman -- Chair

AuditionsM.J. Coulson & John Cotter
 WOMEN'S BOARD Costume ShopChristine Schueneman
 FIRST ENERGY Lighting Dept.Mark A. Zimmerman
 PropertiesJohn Riazzi
 SoundCharles Korecki & Tom C. Barnes
 Stage ManagementNikki Rafferty
Ex-Officio:
 Women's Board RepresentativeJean Questel
 Producer of Youth/Family ProductionsSean McConaha
 Technical DirectorAlan Scott Ferrall
 Salon Series CoordinatorsTom Abdo & Suzanne Smith
 Play Selection ChairLibby Jacobs
 Executive DirectorElynmarie Kazle



Our Generous Donors

Weathervane Playhouse gratefully acknowledges the financial support of our corporate, foundation and individual members. Their Membership helps keep admission prices low and helps us to maintain the high standards of production you've come to associate with Weathervane. This list is updated throughout the season.

SUPER FOUNDERS (Gifts of \$10,000+)

The GAR Foundation	Ohio Arts Council
The Estate of Sy (and Charlotte) Kaplan	OMNOVA Solutions Foundation
Northeastern Ohio Education Association	

FOUNDER'S CIRCLE (Gifts of \$5,000+)

Akron Community Foundation	Charles E. & Mabel M. Ritchie
City of Akron	Memorial Foundation
Ann & Dave Brennan	Sisler McPaw Foundation
Margaret J. Dietz	Lloyd L. & Louise K. Smith
The Lehner Family Foundation	Memorial Foundation
John A. McAlonan Fund	Weathervane Women's Board

PLATINUM MEMBERS (Gifts of \$1,000+)

INDIVIDUALS

Fred & Francia Albrecht	Hubert E. Kirkland
Roger G. Berk Family & Creative Technology	Jo Ann Oelschlager
Scott S. Brown	Thomas R. Trotter
Elynmarie Kazle & Mark A. Zimmerman	

CORPORATIONS & FOUNDATIONS

Babcox Publications	Robert A. Kutz Charitable Trust
Glenn R. & Alice B. Boggess Memorial Foundation	C. Blake & Beatrice McDowell Foundation
Brennan Family Foundation	Michelson Foundation
Bridgestone/Firestone Trust	Laura R. & Lucian Q. Moffitt Foundation
FirstEnergy Foundation	The RC & Katherine Musson Charitable Foundation
Kenneth L. Calhoun Charitable Trust	M. G. O'Neil Foundation
The Goodyear Tire & Rubber Company	◎ TARGET
Key Foundation	

GOLD MEMBERS (Gifts of \$500 - \$999)

INDIVIDUALS

Drs. Michelle & Joseph Blanda	Jim & Janet Heilmeier	Frank Peterson Family
Eileen & Peter Burg	Dr. Jack & Libby Jacobs	Elizabeth B. Sandwick
Marcia & Warren Deist	Dr. & Mrs. Edward Koosed	Steven P. Schmidt, Ph.D.
John Grafton & Richard Worswick	Richard & Leslie Lund	Jean P. Stevens
Eileen & Ralph Greene	David & Orlene Makinson	Mary & Mel Wolfman
Olga & Michael Giustino	Mrs. C. Blake McDowell, Jr.	Mona L. Wolfman



CORPORATIONS & FOUNDATIONS

Buckingham, Doolittle & Burroughs	National City Bank
InfoCision Management Corp.	Summit County Internists, Inc.
Myers Industries, Inc.	

SILVER MEMBERS (Gifts of \$250 - \$499)

INDIVIDUALS

Drs. Morton & Miriam Agins	Bud Graske	The Moushey Family
Mrs. Wm. S. Campbell, Jr.	Roy & Mary Hartz	George Moxon
Chic & Juanita Carlson	Jim & Charlotte Horvath	Patricia Obenour
Mildred Collis	Mrs. Harvey Karam	Barbara B. O'Connor
Dr. Paul Daum	Mary Beth Kluge	John O'Neill
Mr. & Mrs. William L. Davis	Doug & Kathy Kohl	Judy & Roger Read
Dr. Richard & Mary Beth Ellison	Shelley & Tom Koutnik	Dr. Douglas & Jane Sanders
W. Scott & Sandra Emerick	Dr. Douglas & Karen Lefton	Doris & Clyde Shaw
Helen & Chisna Fleming	Mr. & Mrs. William Lowery	Connie & Bob Velotta
Barry Friedman	Sheila Motter	Mary Warhol & Dale Ruth

CORPORATIONS & FOUNDATIONS

Air Enterprises	Ernst & Young LLP	Maynard Family Foundation
Bober, Markey, Fedorovich	FW Albrecht Family Foundation	Roetzel & Andress
Cedarwood Companies	GoJo Industries	Steere Enterprises
The Davey Tree Expert Co.	Jeter Systems	Welty Building Company

PATRON MEMBERS (Gifts of \$150 - \$249)

INDIVIDUALS

Lauri Agins	Dr. Lowell & Francine Gerson	Doug Mory
Mr. & Mrs. John R. Arther, III	Mary & Bill Glaeser	Dr. George & Janet Nankervis
Lisa & Chuck Ayers	Dr. Terry A. Gordon	Tina & John Scanlon
Elizabeth Campbell	GINNY & Jay Hershey	Thomas Stephan
Frank C. Comunale	Dr. C. William & Ardith M. Keck	Atty. & Mrs. Leo Weill
Dr. & Mrs. Stephen A. Farkas	Margaret & John McBride	Judge & Mrs. Harold White
Jerilynn Ferguson	Mr. & Mrs. Richard D. Miller	Marta J. Williger

CORPORATIONS & FOUNDATIONS

Akron Publishing Company	ComDoc, Inc.	Mogen Real Estate
Akron Tool & Die	Flexys America	North Akron Savings
Amer Insurance	GBC Design, Inc.	Peters, Tschantz & Bandwen
Annaco	Hitchcock Fleming & Assoc.	The Ruhlin Company
Arther Printing	Kastner, Westman & Wilkins, LLC	Smithers Scientific Services
Brockman, Coats, Gedelian		Yoder Brothers, Inc.

SUSTAINING MEMBERS (Gifts of \$100-\$149)

INDIVIDUALS

Virginia Abell	Paul & Ruth Eisenzimmer	Tatiana & Richard Harris
Mr. & Mrs. Seymour H. Baron	Suzy Elderkin	Robert J. Hasman
Mary & Rollie Bauer	Mr. & Mrs. William R. Feth	Ellen & Karl Hay
Doug & May Ann Bell	Mr. & Mrs. Paul A. Frank, Jr.	Marilyn Heagerty
John & Maryanne Cotter	Dave Freeman	Kathryn M. Hunter
Jane & John DeYoung	Diana & John Gayer	Laura & Jeff Kerchner



SUSTAINING MEMBERS - INDIVIDUALS Continued

Richard & Judy Kotick
Amy Lee
Phyllis J. Lerch
Dr. Donald & Wendy MacKay
Virginia D. Moline
Mary Ann Peters
Betty & Bill Plant

Dr. Luis & Theresa Proenza
Jean Questel
Alan Rosenwasser
Lois & Paul Simmons
Mr. & Mrs. Edgar Steinmark
Elinore Marsh Stormer
Helena Sturkey

Linda Waite
Theresa Ellen Wegryn
Bob & Shari Whitfield
B.J. Zeigler
Dan & June Zeno

SUSTAINING MEMBERS (Gifts of \$100 - \$149) CORPORATIONS & FOUNDATIONS

Akrochem Corporation

Cohen & Company

CONTRIBUTING MEMBERS (Gifts of \$50 - \$99)

INDIVIDUALS

Janine Barzyk Ackerman
Robert Antenucci
Kathleen Ashcroft
Barbara "Bunny" Ballance
Carol Boyd
Madeline & Libert Bozzelli
Julie & Steven Brandle
Curtis R. Brown
Donne & Janet Clark
Gertrude G. Comunale
Raleigh & Gloria Drennon
Penny Frese
Pat Galloway
Beverly J. Garrett
Mrs. T.V. Gerlinger
Jan S. Haberman
Robert J. Hasman

Marty Jones
Carla & John Kachmar
Dr. & Mrs. Lawrence Kaye
Dr. & Mrs. Raymond Kimberly
Dede Klein
Jane & Edward Krimmer
Edna Kuhlman
Sandra Leith
Margaret McDowell Lloyd
Martha E. Mazak
Frances McGovern
Arlene McKinnon
Lynn & Ed Metzger
Mr. & Mrs. Carl Osherow
Drs. Irja & Alek Piirma
Dr. Joseph Rapotec
Joanne Sullivan Reed

Gloria T. Reich
Dr. & Mrs. John Saks
Sam & Martha Salem
Bertie & Milton Sass
Jay Sigler
Priscilla Smith
Richey & Sandra Roe Smith
Margo Snider
Jean & Ethel Soudry
Barbara & Russell Stevic
Dr. & Mrs. Robert T. Stone
Mr. & Mrs. David Taylor
Edith & Norbert Weisend
Linda Wertz &
Robert E. Cunningham
Dr. Jeffrey Yatsu

CORPORATIONS & FOUNDATIONS

General Metals Powder Company

SPECIAL MEMBERSHIP -- 100-HOUR VOLUNTEERS

Christine Schueneman

Weathervane Community Playhouse gratefully acknowledges **SBC, Merrill Lynch, The BF Goodrich Company, Key Foundation, The Goodyear Tire & Rubber Company and Illinois Tool Works Foundation** for contributions made through matching gifts programs.

Weathervane Community Playhouse gratefully acknowledges **The Sisler McFawn Foundation, Akron Community Foundation, Robert A. Kutz Charitable Trust, OMNOVA Solutions Foundation and Target Stores** for contributions for Project STAGE presentations and Youth Outreach Programs.

Next On Our Schedule 2003-2004 Season Begins

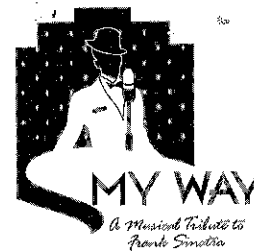


proudly sponsored by



Play by
Richard R.
George
Adapted from
the novel by
Roald Dahl

**July 26 -
Aug. 10**



Compiled
by David
Grapes

Sept. 10 -
Oct. 5

Frank Sinatra's style defined a generation. This two-hour, 90-song revue contains many of his most fondly remembered signature tunes.

Memorial Contributions were made to Weathervane Playhouse in honor of **W. Scot Sexton** by

Marilyn and Jack Kent
Springfield Schools Staff & Students
Miller-South Staff & Students
Patty Saks
The Ohio State University Extension

Karen E. Clark
Wendy and Tim Bartlett
Cynthia Caprez
Elynmarie Kazle and
Mark A. Zimmerman

Memorial Contributions were made
in honor of **Margaret Harris** by
Robbin and Frank H. Harvey, Jr.
Cindy and Scott Abell
Elynmarie Kazle and
Mark A. Zimmerman
Mr. & Mrs. Charles Renner

Memorial Contributions were made
in honor of **Joseph Horvath** by
Maryanne and John Cotter
Elynmarie Kazle and
Mark A. Zimmerman
Ardith M. and Dr. C. William Keck

A Memorial Contributions was made
in honor of **Kitty G. Brown** by
Margaret A. and Daniel J. Sullivan

A Memorial Contribution was made
in honor of **Etta Manning** by
Helen and Chisna Fleming

A Memorial Contribution was made
in honor of the 50th Birthday
Celebration for **Randie O. Sass** by
Mr. & Mrs. Ludwig Stern

Memorial Contributions were made
by Elynmarie Kazle and
Mark A. Zimmerman in honor of
Rivka Friedlander -- Bat Mitzvah
Josh Carter -- Bar Mitzvah



Welcome Back!

For those of you attending a Weathervane show for the first time, WELCOME!

You may have noticed that we have taken a production break this spring — the longest break in 10 years — to do a little housekeeping and improvements to our facility. We have added a fly rigging system to our stage house thanks to **Northern Ohio Golf Charities**, the **GAR Foundation** and **Bridgestone Firestone**.

This system, installed by **Tiffin Scenic**, enables us to use a system of weights and pulleys to easily raise and lower scenery and lighting for the first time in our 68-year history (33 in this building).

You might notice our stage curtains hanging again. Even though this three-year period has been an interesting experiment in scenic, sound, and lighting technology, we are glad things are back to normal. Thanks to the **City of Akron**, **Mayor Don Plusquellic** and **Councilman Daniel Horrigan**, we have improved and expanded parking. This came in quite handy when our parking lot was the host to the recent, first-ever **Valley Faire**. It was a weekend full of music, entertainment and fun. I hope you did not miss out.

Not a group to stand still during a hiatus, we also hosted the **Northeast Region OCTAFest** (Ohio Community Theater Association). Twelve area theaters presented excerpts of their very best work during a weekend that featured workshops, business meetings and awards. Our excerpt of **The Laramie Project** (Weathervane's 500th Production) was selected as an outstanding example of theater from our region and has been invited to be presented as part of OCTA's 50th Anniversary Conference, to be held in Columbus over Labor Day weekend. Weathervane was also selected as the **Northeast Region's Theater of the Year**. What a fitting tribute to our founders and a great cap to our Season of Celebration!

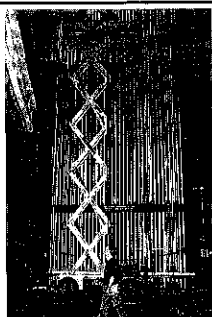
Now sit back and enjoy the work of director **Nancy Cates** and company as we present to you our final play of the season, a fitting cap to the tribute to our four women founders, the theatrical story of vaudeville babies **Mama Rose**, **Dainty June** and **Gypsy Rose Lee**.

Elmorie Kagle

Executive Director

The Fly System

This photo shows the pulleys which make it function. Anyone interested in learning how to make all those ropes work may call **Scott Ferrall** for more information.



Weathervane Community Playhouse
68th Season — 2002-2003 — Production # 502
June 18 - July 20, 2003



Book by Arthur Laurents
Music by Jule Styne
Lyrics by Stephen Sondheim

A Musical Fable

suggested by the memoir of Gypsy Rose Lee

Directed by Nancy Cates

ssdc

The director is a member of the *Society of Stage Directors and Choreographers, Inc.* an independent national labor union.

Musical Director -- Ron Hazelett

Choreographer -- Jeffrey Graham Hughes

Conductor -- Dr. David Spondike

Stage Manager
Buddy Taylor

Properties Designer
John Riaz

Costume Designers
Janet Heilmeier
Connie Velotta

Assistant Stage Managers
Michelle Owen
Lisa Shay

Lighting Designer
Mark A. Zimmerman

Scenic Designer
Alan Scott Ferrall

Gypsy, A Musical Fable is produced by special arrangement with
Tams-Witmark Music Library, Inc., 560 Lexington Avenue, New York, N.Y. 10022.

Weathervane productions are sponsored in part by



Weathervane Community Playhouse, 1301 Weathervane Lane, Akron, OH 44313-5186
Ticket Office: 330-836-2626 — Fax: 330-873-2150 — Email: wcpakron@aol.com
www.weathervaneplayhouse.com



About the Play

The origin of *Gypsy* follows the real life experience of Gypsy Rose Lee, who was born Rose Louise Hovick, and of her sister, June, who became famous later as actress June Havoc. The two were pushed by the ultimate stage mother into being child vaudeville performers. One chapter of *Gypsy*'s memoir was published in early 1957 in Harper's magazine where it caught the eye of Broadway producer David Merrick, who immediately secured rights to the book with the intention of turning it into a musical. The show opened in New York City in 1959 and was a smash hit. It ran for 702 performances and the original company toured for eight months.

Gypsy's ultimate triumph on the stage is the culmination of her aggressive stage mother's dream of success for her daughters and through them for herself. Only *Gypsy* succeeds. The journey is the story as Rose, June and Louise traipse across the United States when vaudeville is dying and burlesque is born. Rose feels daughter June is most likely to become a star because Louise is plainer and stands quietly in the shadows. Rose develops an act titled Baby June and her Newsboys which plays in Los Angeles, Dallas, Akron, New York, Buffalo and Omaha. As the act begins to lose its luster, June elopes with Tulsa, one of the newsboys. Herbie, their manager, proposes to Rose and is rejected. Having hit bottom, all efforts turn toward making Louise into a star as a lady-like burlesque stripper.

About the Librettist, Composer and Lyricist

Arthur Laurents, Librettist, got his start as a writer and playwright following World War II with production of *Home of the Brave*. He received an award from the National Academy of Arts and Sciences and the Sidney Howard Award as the most promising new playwright. The prize allowed him to write *The Bird Cage* and travel to Italy where he produced *Time of the Cuckoo*. In 1955 it was presented as the film, *Summertime*, starring Katherine Hepburn. Perhaps his greatest triumph was in cooperation with Stephen Sondheim for *West Side Story*.

Jule Styne (1906-1994), Composer, was three years old when his parents took him to see a performance by famed Scottish entertainer, Harry Lauder. He leaped onto the stage and sang a song. As an eight-year-old, Styne studied at the Chicago College of Music, winning a medal in a Chicago Symphony piano competition for children. When he was told that his hands were too small for him to become a concert artist, he turned to show business which led him to Hollywood where he received an Oscar for *Three Coins in the Fountain*. He returned to Broadway where his *High Button Shoes* and *Gentlemen Prefer Blondes* were huge successes.

Stephen Sondheim, Lyricist, began his musical career by providing the words for Leonard Bernstein's music in *West Side Story* and for Jule Styne's *Gypsy*. He too started as a pianist, absorbing shop-talk, advice and techniques from the family neighbor Oscar Hammerstein II. He went to college at Williams, then on to Princeton where he studied with famed composer Milton Babbitt. Sondheim's first Broadway score with lyrics was for *A Funny Thing Happened on the Way to the Forum*. Sondheim himself won three Tony Awards for *Company* in 1970, for *Follies* in 1972, and for *A Little Night Music* in 1973. These successes were followed by *Pacific Overtures*, *Side by Side by Sondheim* and *Sweeney Todd*. Sondheim received a Kennedy Center Honor in 1993 and in 1997 received the New York magazine's New York Award for lifetime achievement.



Gypsy, a musical fable *Cast (in order of appearance)*

Uncle Jocko, Pastey	Mark A. Zimmerman
Angie, Farmboy	Nigel Ian C. Hujar
Balloon Girl, Newsboy 1	Hayley Hinline
Baby Louise	Kenzie Kaye Nothnagel
Baby June	Emily Nader Schrader
Rose	Cynthia P. Jahn
Pop, Weber, Kringelein, Phil	Irv Korman
Newsboy 2	Darren McArthur
Tommy, Newsboy 3	Brandon Kline
Herbie	Henry C. Bishop
Louise	Alana Rader
June, Showgirl	Marissa Montigney
Tulsa, Bougeron-Cochon	Gabriel K. Riazzi
Mr. Goldstone, Cigar	Ron Hazelett
Miss Cratchitt, Mazeppa	Karen L. Wood
Farmboy	David O. Barnes
Farmboy	Joe Bologna
Georgie, Farmboy	James Smith III
Yonkers, Farmboy	Matthew Devus
L.A., Farmboy	Alex Devus
Tessie Tura	Lisa Shay
Electra	Megan McCoy
Gladiator Stripper, Showgirl, Delores, Renee	Hayley Young
Waitress, Showgirl, Marjorie May	Kathleen Rooney
Gladiator Stripper, Showgirl, Thelma	Amy L. Ayers
Showgirl, Agnes	Shannon Houser

***For your safety, we request that you remain seated until the house lights have come up at intermission and after the curtain call.**

***The use of cameras, recording equipment and laser pointers is forbidden during this performance.**

***As a courtesy to fellow audience members, please make sure that cell phones and pagers are turned off during the performance.**

***Please do not bring food or drink in the auditorium.**

***NOTE: In case of an emergency in which the performance cannot continue, Calamity Vouchers will be issued for a future performance. Thank you.**



Musical Numbers -- Act I

Overture	
May We Entertain You	Baby June and Baby Louise
Some People	Rose
Small World	Rose and Herbie, Baby June and her Newsboys
Mr. Goldstone, I Love You	Rose and Ensemble
Little Lamb	Louise
You'll Never Get Away From Me	Rose and Herbie, Dainty June and her Farmboys
If Momma Was Married	Louise and June
All I Need Is the Girl	Tulsa and Louise
Everything's Coming Up Roses	Rose

There will be a 15-minute intermission between the acts.

Musical Numbers -- Act II

Entr'acte	
Madame Rose's Toreadorables	Louise and the Toreadorables
Together, Wherever We Go	Rose, Louise and Herbie
You Gotta Get a Gimmick	Tessie, Mazeppa and Electra
Small World-Reprise	Rose
Let Me Entertain You	Louise and Company
Rose's Turn	Rose

The action of the play covers a period in the early Twenties to the early Thirties and takes place in various cities throughout the country.

ACT I

- Scene 1: Vaudeville theatre stage, Seattle
- Scene 2: Kitchen of a frame house, Seattle
- Scene 3: Backstage of a Vaudeville house, Dallas
- Scene 4: On stage of a Vaudeville theatre, Los Angeles
- Scene 5: Hotel rooms, Akron
- Scene 6: Chinese restaurant, New York
- Scene 7: Stage of Grantziger's Palace, New York
- Scene 8: Grantziger's Office
- Scene 9: Theatre Alley, Buffalo
- Scene 10: Railroad platform, Omaha

ACT II

- Scene 1: Desert country, Texas
- Scene 2: Backstage of a Burlesque house, Wichita
- Scene 3: Backstage corridor
- Scene 4: Backstage and on stage:
Wichita, Detroit, Philadelphia, Minsky's
- Scene 5: Louise's dressing room
- Scene 6: Bare stage after the show



Our Directing Team

Nancy Cates -- Director *Gypsy* is Nancy's fifth show at Weathervane, following *Communicating Doors*, *The Two Gentlemen of Verona*, *A Man for All Seasons* and *Blithe Spirit*. Nancy has collaborated with *Gypsy*'s late, great Jule Styne recently, by writing the book for his music (with lyrics by Bob Merrill) to a now published version of *A Christmas Carol*, which she has directed in Cincinnati and Richmond, VA. Nancy has directed more than a hundred productions in regional, LORT, university and community theaters including, locally, *Ain't Misbehavin'*, *Pump Boys and Dinettes* and *The Foreigner* for Porthouse Theatre Company at Blossom Music Center and *Oh, Coward!* as a collaboration with the Ohio Ballet. She and her husband Terry Burgler are the Artistic Directors of the Ohio Shakespeare Festival, which opened its first season last summer with *The Taming of the Shrew* at Stan Hywet Hall and Gardens, and which is currently producing *The Tempest* on a new OSF stage at Stan Hywet's lagoon. In August, Nancy will be directing OSF's first musical, *Oh, Coward!* Other favorite shows include the regional premiere of a country-western musical, *Cowgirls*, five earlier productions of, naturally, *Oh, Coward!*, three of the 1960's girl-group review *Beehive*, two of both *Greater Tuna* and *The Best Little Whorehouse in Texas*, and one each of *The King and I*, *Tomfoolery*, *The Road to Mecca* and *On the Verge*. An honors graduate of the University of Virginia, Nancy has received five sets of regional and critics' awards for excellence in directing.

Ron Hazelett -- Music Director made a memorable appearance on Weathervane's stage as *Dick Deadeye* in the 1980 production of *HMS Pinafore*. He began his professional career as a pianist, receiving a Bachelor's degree from Kent State University. While studying at Kent, Ron toured with National Rocks Acts, Heart and Mahogany Rush, creating and performing in high tech theater rock shows. He received a Master's degree in vocal performance from Marshall University where he won both district and regional awards in the Metropolitan Opera National Council audition. As a professional singer/actor, Ron has appeared with the Ohio Light Opera, the National Light Opera, Kenley Players, Carousel Dinner Theater, Cleveland Opera Theater and the Blossom Festival Opera. As a soloist, he has performed with the Cleveland Orchestra, Akron Symphony, Canton Symphony, Huntington Chamber Orchestra and the Spoleto Festival Orchestra. As music director, he has worked with Goodyear Community Theater, The Players Guild, Hudson Players, Stow Players, Brecksville Little Theater, Katfish Productions, Pointe West Studios and is presently the music director for the Peggy Lee Opera, produced and filmed by the Sundance Film Studio in New York City. He teaches private voice at the West Side Vocal Academy and in the Akron Public Schools Magnet Arts Program.

Jeffrey Graham Hughes -- Choreographer As Artistic Director of the Ohio Ballet, he has overseen productions of more than forty ballets during his five-year tenure. Ohio Ballet, in 2001-2002, collaborated with Dayton Ballet for presentations of *Peter Pan* and *Hamlet*, toured thirteen states and visited twenty cities. Hughes most recently served as rehearsal director with the Hong Kong Ballet where he was on the faculty and choreographed for the Hong Kong Academy for Performing Arts. He was associate director at Ballet de Monterey, Mexico; ballet master for Alonzo King's Lines Contemporary Ballet in San Francisco, and artistic associate for Ballet Arts/Ballet Tucson in Tucson, AZ. In June 2001, he created two ballets for the Chautauqua Ballet Company's *Salon Evening*. He was also a contributing choreographer for the initial three seasons of Festival of Life, a benefit for children and adults with AIDS in Atlanta. His choreographic awards include Emerging Choreographer at the Southeastern Ballet Festival and Best Choreography Ballet Division at the Tao Li Bei dance competition held in mainland China. He and wife, Pamela Reyman, Ohio Ballet's ballet mistress, are the proud parents of Maya Esperanze Hughes, born in November 2002.



Callboard Cast Biographies

MARK A. ZIMMERMAN (Uncle Jocko, Pastey) See *Backstage Callboard*
NIGEL IAN C. HUIAR (Angie, Farmboy) is in the ninth grade at St. Anthony School in Akron. He played Judah, a brother, in Weathervane's 2002 presentation of *Joseph and the Amazing Technicolor Dreamcoat*. In 1997 he was a royal child in *The King and I*.

HAYLEY HINELINE (Balloon Girl, Newsboy) will enter grade five at the Miller-South Visual and Performing Arts School where she will study drama. Hayley takes musical theater classes at Weathervane, loves drama and hanging with friends. Her goal is to be on Broadway some day.

KENZIE KAYE NOTHNAGEL (Baby Louise), a sixth grader at Our Lady of the Elms, is on the honor roll and has had an original poem published. She is a basketball player and has studied piano for nine years, dance for four, and voice for one.

EMILY NADER SCHRADER (Baby June) will be a sixth-grader at St. Stephen School in Niles. She played the Princess in *The Princess and the Pea* with the Kent State Traveling Company and the Queen of Sprats in *Jack in the Beanstalk* at Youngstown Playhouse. Last year she appeared in productions for Galaxy Dinner Theater, The Players Guild, Kent State Traveling Company, Trumbull New Theater and Youngstown Playhouse. She received the DaVinci Award, Renaissance Award and is an Honor Student.

CYNTHIA P. JAHN (Rose) lives in Parkman and teaches English, Yearbook, Drama and the Academy of Theatrical Arts and Performance at Stow-Munroe Falls High School. She is a graduate of Adrian College and has done graduate studies at Kent State University and The

University of Akron. This year she directed *West Side Story* and, in previous years, directed *Barnum*, *Footloose* and *Fiddler on the Roof* at Stow-Munroe Falls High School. She has been a Weathervane stalwart since 1987 when she played Sarah Goode in *The Crucible*. She also appeared in *Jerry's Girls*, *A Little Night Music* (for which she won a Chanticleer) and *Pygmalion*. She has also performed and directed for Stow Players and Hudson Players. Cynthia has an understanding and wonderful spouse, Doug, and two sons, Scott, 26, and Ben, 22.

IRV KORMAN (Pop, Weber, Kringelein and Phil) has been writing play reviews and entertainment articles for 25 years, currently for *Focus* and *The Montrose Sun*. He played Gibbs and Witherspoon in our *Arsenic and Old Lace*. Other WCP productions include *Fiddler on the Roof*, *The Fantasticks* and *...Forum*. His preparation for comedy continues with creation of his character, Marlowe the Magic Clown. In 2002 he portrayed the Russian General in *The Nutcracker* for the Akron Children's Ballet. He is an associate lecturer in the School of Communications at The University of Akron from which he received both Bachelors and Masters of Arts degrees. He is writing a book on famous entertainers he has interviewed. Wife Francine and daughters Julie and Melanie are his staunchest supporters, as is cat, Bucky.

DARREN MCARTHUR (Newsboy 2) is a sixth grader at St. Stephen School in Niles. His home is in Warren where he performed in 2002 in *Eleanor: An American Love Story*. He also appeared in *The Prince and the Pauper* at the Youngstown Playhouse for which he received a commendation for outstanding achievement by an actor in a major role.



Callboard Continued

He studied at the Butler Institute of American Art and has received many art awards. He takes dance lessons at the Performing Arts Center in McDonald and won a gold award in Starbound dance and Star Systems dance competitions.

BRANDON KLINE (Tommy, Newsboy 3) is a first grader at St. Hilary School in Fairlawn. He sang in the children's chorus for *The Music Man* at Carousel Dinner Theater this year. He has taken five years of dance in jazz and tap and won many dance competition awards. He loves to go to Walt Disney World, enjoys his little brother Bryan and being in the spotlight.

HENRY C. BISHOP (Herbie) is always a welcome actor on the Weathervane stage where he has given many fine and/or hilarious performances. Most recently he portrayed Lazar Wolf in *Fiddler on the Roof*. In 2001, he was Pseudolous in *A Funny Thing Happened on the Way to the Forum*. He has been seen as Fagan in *Oliver!*, as Hector in *The Golden Apple*, as the Major General in *The Pirates of Penzance*, as Finian in *Finian's Rainbow*, as Woolsey in *A Man for All Seasons*, and as Henry Ford in *Camping with Henry and Tom*. Henry is married to Karen Wood.

ALANA RADER (Louise) of Fleetwood, PA, transferred to Kent State University from American University in Washington D.C. and played trumpet in Kent's pit for *Chicago* last spring. She's a junior at KSU working on her Bachelor of Fine Arts degree in musical theater and appeared in *Measure for Measure*. Elsewhere, she has performed in *Guys and Dolls*, *Joseph... Dreamcoat*, *Peter Pan*, *Titanic*, *Fiddler on the Roof* and *Cinderella*. Alana also skis and writes poetry and hopes to backpack through Europe someday.

MARISSA MONTIGNEY (Dainty June) has made eleven appearances on

Weathervane's stage. She was the narrator in *Joseph...* all three years and portrayed Hodel in *Fiddler on the Roof*. She won a Chanticleer for best supporting actress for that role. She has been on the Palace Theater stage in Cleveland and sang the National Anthem for the Cavaliers.

GABRIEL K. RIAZI (Tulsa, Bougeron-Cochon) is a sophomore at Marshall University in Huntington, WV. He won a Chanticleer for his portrayal of the Artful Dodger in *Oliver!* and an Ohio Community Theater Association Award for Excellence in Acting for his portrayal of Mercutio in *Romeo and Juliet*. His other credits include Judah/Dance Captain in *Joseph...* for the Halle Theater; Sid Sorkin in *Pajama Game* and Steven Kodaly in *She Loves Me*, both at Firestone High School. He also appeared in *The Kentucky Cycle* for Ensemble Theater.

RON HAZELETT (Mr. Goldstone, Cigar)-See Musical Director

KAREN L. WOOD (Miss Cratchitt, Mazeppa) was most recently seen on Weathervane's stage as Abby in *Arsenic and Old Lace*. She played Golde in *Fiddler on the Roof* and Domina in *...Forum*. She has also been seen in *Oliver!*, *Cabaret*, *Guys and Dolls*, and *She Loves Me*, all for Weathervane. She has also appeared at other area theaters for the past 25 years. Karen holds three Chanticleers among her accolades. She has taught for 32 years and is an intervention specialist for the North Central Local Schools in Wayne County. In 2001, she received the Franklin Walter Outstanding Special Educator Award.

DAVID O. BARNES (Farmboy) was seen as the Scarecrow in this season's *The Wiz*. He'll be a senior at Firestone High School this fall where he is a member of the Symphonic Choir, Madrigals, Men's



Callboard Continued

Chorus, Gospel Choir, Spanish Club and Peer Mediators.

JOE BOLOGNA (Farmboy) makes his first appearance on Weathervane's stage. He is a ninth grader at St. Vincent-St. Mary's High School, where he was a member of the *Brigadoon* chorus this year. He played Tevye in *Fiddler on the Roof* and Nathan Detroit in *Guys and Dolls*, both productions at St. Hilary School.

JAMES SMITH III (Georgie, Farmboy 3), a senior at Firestone H. S., appeared in four productions in 2002: *Canker Sores and Other Distractions* at Firestone, *Asylum* for Northeast Ohio Thespians and *Our Town* and *The Wiz* at Weathervane. He is interested in photography, writing, illustrating, sculpting, and acting.

MATTHEW DEVUS (Yonkers, Farmboy), a tenth grader at Green High School, has an impressive resume beginning in 1996 when he played the first pickpocket in *Oliver!* for Theater 8:15. This year he was seen in *42nd Street* at Green High. He has also appeared in productions of *Godspell*, *Juneteenth*, *Merry Christmas O'Henry*, *Annie*, *Noah the Musical* and *Suzie's Got a Crush*. He would like to dedicate his performance in *Gypsy* to Richard Moore, a dear friend who passed away but who excited his interest in theater.

ALEX DEVUS (L.A., Farmboy) is a sophomore at Green High School and is a soccer referee. He was seen in *42nd Street* at Green High this year. In 2002 he was a soloist, ensemble singer and dancer in *Godspell* for Streetsboro Theater and the Slave Catcher in *Juneteenth*. He has also been seen in productions at Stow Players, Dynamics in Tallmadge and Theater 8:15. **LISA SHAY** (Tessie Tura, Assistant Stage Manager)-See Backstage Callboard

MEGAN MCCOY (Electra) expects to graduate from Bowling Green State

University in May 2004. Her home is in South Euclid where she attended Brush High School was seen in *Grease*, *Wizard of Oz*, *Squad Room* and *Bye, Bye Birdie*.

HAYLEY YOUNG (Gladiator Stripper, Showgirl, Delores, Renee) is a tenth grader at Firestone High School. She was seen in *The Wiz* at Firestone High School and Weathervane and as the leading female role in *Edgar Allan Poe* at Miller South.

KATHLEEN ROONEY (Showgirl, Marjorie May, Waitress) will be a sophomore at Stow-Munroe Falls High School. She studies voice and acting at West Side Vocal Academy and studies dance at the Christine Jones-Meneer School of Dance. Kathleen was seen in her high school production of *West Side Story*. Other credits include *A Chorus Line* and *Bye, Bye Birdie*. Kathleen thanks all of her instructors for their guidance and especially her parents for their love and support.

AMY L. AYERS (Thelma, Showgirl, Gladiator Stripper) was seen in *The Wiz* and in the cast of several youth productions. She was stage manager for *Joseph...* and assistant stage manager for *The Philadelphia Story*. She is currently a junior at Firestone High School where she is a member of the Magnet Arts Theatre Program and Thespian Troupe #5570. She was the recipient of Weathervane's "Valley Chicken" Youth recognition award for 300+ volunteer hours.

SHANNON HOUSER (Showgirl, Agnes) was a chorus member and dancer for St. Vincent-St. Mary's High School production of *Brigadoon* where she was also an Angel in *Anything Goes*. For Weathervane she has been seen in *Joseph...*, *Babes in Toyland*, *Alice and the Wonderful Tea Party*, *The Velveteen Rabbit* and *Cinderella*. She is a scholarship student at the West Side Vocal Academy.



Backstage Callboard

BUDDY TAYLOR (Stage Manager) was Assistant Stage Manager for *The Complete Works of William Shakespeare (Abridged)*. He comes from Florida where he has been stage manager, lighting designer and technical advisor for eighteen plays at the Pensacola Little Theatre. He studied theater arts at the University of West Florida and worked backstage for 19 productions.

MICHELLE OWEN (Assistant Stage Manager) received a B.S. in engineering degree from Tennessee Tech University in Cookeville, TN and is an engineer with Advanced Elastomer Systems. She served as assistant stage manager for *Complete Works...* and worked backstage in thirteen productions at the Pensacola Little Theatre.

LISA SHAY (Tessie Tura, Assistant Stage Manager) is an engineer at Advanced Elastomer Systems with a B.S. degree from Auburn University. She served as assistant stage manager for *The Chosen* and as costumer for *The Fantasticks*. She costumed *Collected Stories* and *Play It Again, Sam* at Coach House and was seen on stage as Panacea in *...Forum*. Lisa and husband Bryon live in Akron.

MARK A. ZIMMERMAN (Lighting Designer, Uncle Jocko, Pastey) is theater director at Firestone High School and chairman of our Production Board and FirstEnergy Lighting Department. He lit WCP shows including *The Wiz*, *Fiddler...*

and *The Fantasticks* and recently directed *Collected Stories* at Coach House. He holds an MA from The UA where he is a part-time instructor in the School of Dance, Theatre, and Arts Administration. Mark has directed over forty productions at Weathervane, Coach House, Stan Hywet, The UA and Firestone H.S. He has been named for the second time to *Who's Who Among America's Teachers*.

JANET HELMEIER (Costume Designer) is dressing her tenth Weathervane production. Trained as a dancer and choreographer, she appeared on our stage in *Kiss Me, Kate* and *Annie* and choreographed shows for Firestone High School and the May Festival. She has dancing granddaughters and soccer-playing grandsons, offspring of her four children. With a degree in communications from The UofA, she is now the "voice of Summers butter" on local radio stations. She thanks the wonderful ladies of the costume shop for their countless hours of work.

CONNIE VELOTTA (Costume Designer) enjoys working on period costumes as she did for *Dracula*, *The Glass Menagerie* and *A Man for All Seasons*. She has earned three Chanticleers for her designs of *Romance, Romance; The Miracle Worker*; and *A Man for All Seasons*. Connie divides her time between Ohio and golf seasons in Florida with husband, Bob.

DR. DAVID SPONDIKE (Pit Conductor) teaches music theory and music history at Firestone High School. He holds a Bachelor of Fine Arts degree from The Ohio State University, a Master's degree in Music Education from The University of Akron, and a Ph.D. in Music Theory and Composition from Kent State University. Dr. Spondike is active locally as a bassist and a composer. He was our pit conductor for *The Wiz*.

Steve Miller, Piano	PIT ORCHESTRA	Matt Jordan, Trombone
Scot M. Sexton, Drums	Jon Augustine, Reeds	Curtis Wakely, Trombone
Aaron James, Drums	Mike Swan, Reeds	Erin McKenzie, Violin
Josh Rzepka, Trumpet	Jason Labovitz, Reeds	Ron Hazelett, Keyboard



Production Team Members & Crews

Alan Scott Ferrall -- Technical Director

Kathy Kohl -- Assistant Technical Director

SET CONSTRUCTION

Ruth Richardson Spencer Burke
Kevin Ford Pete Chiccarino
Tom Marshall Dru Muyst
Lauri Agins Judy Willemssen
John Hujar Aaron Jameyson

SOUND ENGINEER

Charles Korecki

LIGHTS

Becca Carter Ryan Pallas
Rachel Harold Leandra Schindler
David Hawkins Patrick Simone
Rachael Hazlett Emily Clark
Kim Lavin Stephanie Kohl
Steve Lawson Shannon Brown
Ashley Mains Dionne Atchison

COSTUMES

Linda Beaty Linda Avers
Randie Sass Alberta Carlin
Sandra Harding Amanda Montigney
Ethel Soudry Chris Schueneman
Henrietta Cook Max Schueneman
Betty Williams Millie Morgan
Dorothy Kies Leah Sass
Amorya Farrier-Cain

PROPERTIES

John L. Sullivan Iris Bolar
Ryan Pallas Kim Nothnagel
Shanna Tedeschi Sue Steiner
Wendy Cooley Linda Riazzi

ACKNOWLEDGMENTS

Katie Bell Tim Champion
Trainer/Handler for Terry Burgler
Chowsie and Little Lamb The Ohio Shakespeare Festival
Ohio Tuxedo - Formal Wear

Estate Sale Stuff - from Cuyahoga Valley Antiques

Tom and Marcia Marshall welcome you to shop online for wonderful antiques, furnishings and collectibles. *Free delivery for Northeast Ohio!*
www.EstateSaleStuff.com

Thanks to Our Volunteers

The following are the vivacious volunteers who assisted you by hosting, house managing and staffing the boutique, office or Green Room during *The Complete Works of William Shakespeare (Abridged)*.

Nora Bamer	Ruth & Paul Eisenzimmer	Barbara O'Connor	Lynn Vanca
Patrice Bechtol	Helen & Cue Fleming	Betty Quaint	Linda Waite
Joyce Bigham	Marilyn Heagerty	Jean Questel	Betty Watterson
Alberta Carlin	Linda Heath	Liz Raines	Pat Weill
Juanita Carlson	Diane Herman	Joanne Reed	Betty Williams
Henrietta Cook	Jane Hessin	Ruth Richardson	Marta Williger
Wendy Cooley	Jane Krimmer	Randie Sass	Mary & Mel Wolfman
John Cotter	Fran Lasser	Marla Scarpitti	Gen Woods
Thelma Coss	Leslie & Richard Land	Lois Simmons	Richard Worswick
M.J. Coulson	Claudena Miller	Suzanne Smith	B.J. Zeigler
Margaret Dietz	Sheila Motter	Susan Speers	Nancy Zeigler
Sally Duddey	Lois Murray	Sue Steiner	
	Pat Obenour	Evelyn Stiggers	



Future Events

Sun., June 22 & 29 @ 7:30 p.m. (lobby)

I'm Glad I'm Not Young Anymore:

Songs of Love and Experience

Cabaret show performed by Kate Loitz

Tickets \$10

***Salon Readings...**

Sunday, June 29 @ 7 p.m. Salon

Reading in Weathervane's Dietz Theater

Meetings, a comedy about a successful

engineer who pines for some down-

home cooking. Tickets: free

Tuesday, July 1 @ 7:30 p.m. on stage

At the Same Time

Cabaret show performed by Adina

Bloom, Sandra Emerick, Keith Gerchak,

David Robeano and Tina Stump

Tickets \$10

Friday, July 11

Annual Gala -- At Weathervane,

includes ticket to *Gypsy*

July 26 - Aug. 10

Charlie and the Chocolate Factory

2003-2004 Youth/Family production

August 16 Akron Hilton

Chanticleer Dinner and Awards

September 10 - October 5

My Way, a musical tribute to

Frank Sinatra

2003-2004 Mainstage production

*Sundays at Seven: Salon Play Readings are held in Weathervane's lobby at 7 p.m. on selected Sundays with light refreshments and discussions following presentations. Free of charge. All welcome.

In the Bank One Visual Arts Gallery

Marci Paolucci, Gallery exhibits chairman, has assembled this fascinating display about burlesque and Gypsy Rose Lee with major assistance from **Roger Durbin, Ph.D.**, Associate Dean of University Libraries, The University of Akron, and the loan by **Geoffrey Hewitt**, Clinton, Ohio, of the sixteen photographic images thought to be an original Christmas card sent to Alexander Woollcott by his friend, Gypsy Rose Lee.

Durbin brought together old programs from burlesque productions, a history of burlesque (for those who aren't old enough to know all about it!), photos of burlesque stars in addition to Gypsy, and other memorabilia which he assembled as a public service to Weathervane audiences and to the community.

The Gypsy Rose Lee Christmas card grouping was formed from a filmstrip found in a box left in the Neshobe Island, Vermont, summer home of Woollcott, playwright, drama critic, radio broadcaster, New Yorker magazine writer and founding member of the famed Algonquin Round Table. Hewitt became acquainted with the owners of Woollcott's home and was on hand when the film was unearthed from a box of "stuff." Hewitt, a photographer, printed the individual frames, making two sets, one for the home's owners, and one for himself. Weathervaners may enjoy this circa 1924 view of burlesque's most famous diva.

Capturing
-the- **American**
Spirit
A Journey Through Music

SUMMIT CHORAL SOCIETY PRESENTS
2002-2003 Concert Season

SUMMIT
CHORAL
SOCIETY

Great American Hymns of Faith

Friday, October 25, 2002

ST. BERNARD CHURCH • 7:30 PM

Christmas Candlelight Concerts

December 20, 21, 22, 2002

ST. BERNARD CHURCH • 7:30 PM

An American Requiem

Saturday, March 29, 2003

ST. BERNARD CHURCH • 7:30 PM

An Ohio Bicentennial Celebration

Saturday, June 21, 2003

E.J. THOMAS PERFORMING ARTS HALL • 8:00 PM

FOR ADDITIONAL INFORMATION CALL 330/434-SING (7464)

Limited Edition Set

**WENDELL
AUGUST**
ESTD 1923

A Tradition of Craftsmanship

Flagship Location, Grove City, PA
(724) 458-8360

Prime Outlets Grove City, PA
(724) 748-4132

Holmes County, Berlin, OH
(866) 354-5192 • Toll-Free

(800) 923-4438 Catalog
WendellAugust.com

10-Piece "Nutcracker"
2003 Collector's Ornament Set
& Nutcracker Figure
Aluminum, Bronze Pewter
or Sterling Silver

For a unique shopping experience
visit one of our stores!



YARTS

We build strong kids, strong families, strong communities.

The Akron Area YMCA believes in building strong kids, strong families and strong communities. We salute the efforts of the Weathervane Playhouse to involve youth and families in the performing arts.



Coach House Theatre

Akron's 1st Theatre

*Celebrating 75 years of great theatre
with our best season yet!*

The Cocktail Hour

by A.R. Gurney
September 12 - 28, 2002

Educating Rita

by Willy Russell
November 7 - 23, 2002

Play It Again, Sam

by Woody Allen
February 13 - March 1, 2003

Collected Stories

by Donald Margulies
April 10 - 26, 2003

the odd couple

by Neil Simon
June 5 - 28, 2003

A Christmas Carol

by Charles Dickens
December 13 - 22, 2002
*Special holiday event
not included in subscription series*

*We have an exciting season
to share with you.*

*So join us at Coach House as we
celebrate our 75th Anniversary--
you're not just invited to the party,
you'll be the guest of honor!*

Jim Fippin
Resident Director

Thank You

We've wrapped up another Acme Community Cash Back program. A big thank you to all who participated. You helped raise \$588.43 for the playhouse -- an increase of \$300 over last season. With your help, I am shooting for a greater amount next time. Watch for the start-up around the second week of September.

Thanks again. *John Cotter*



Community
Cash Back Program



*Proud supporters of
Weathervane Playhouse*

*Fine Italian Dining
Just a short walk away
in Liberty Commons*

**1244 Weathervane Lane
Akron, OH 44313
330-836-6088**



trēva
RESTAURANT & MARKET

**lunch
dinner
gift baskets
catering**

**One West Exchange Street
Downtown Akron
330-253-0340**

Weathervane Playhouse Staff

Elynmarie Kazle
Executive Director

Keith D. Campbell
Supervisor, Front-of-House
& Patron Relations

Alan Scott Ferrall
Scenic Designer/Technical Director

Janis L. Harcar
Director of Marketing & Development

Sean McConaha
Dir. of Education/Producer Youth Prod.

John A. Cotter
Business & Public Relations Assistant

Kathy Kohl
Assistant Technical Director

Pat Biddle
Bookkeeper

DreaJean L. Brown
Data Services Manager



**Weathervane
Community
Playhouse**

is a proud member of



**Ohio
Community
Theatre
Association**

**Akron-Canton's
only
television
newscast
is here!**



ERIC MANSFIELD
anchors Akron-Canton news



MARK NOLAN
forecasts Akron-Canton weather

**Watch Your
Newscast
Weeknights
at 6:30**

**Proud sponsor of
Weathervane
Community Playhouse**

**PAX 23
news**



JIM DONOVAN
covers Akron-Canton sports

Why is this man smiling?



Because his customers are too.

If you haven't been smiling lately, please call Akron Publishing Company for your next custom publishing project. We will produce brochures, magazines, catalogs, directories and more... all of them from concept to completion. Akron Publishing Company will be the only call you'll need to make.

AKRON
PUBLISHING COMPANY

phone: 330.929.2703 ▲ fax: 330.923.0856
e-mail: akronpublishing@neo.rr.com

We do really good work, so that you'll look really good.



Weathervane Hours

Weathervane Business Office hours are from 10 a.m. to 5:30 p.m. Tuesday through Friday. To place ticket orders call the **Ticket Office** at **330-836-2626**. The ticket office hours are Tuesday through Friday from 10 a.m. to 5:30 p.m. During performances, the Ticket Office opens one hour before each performance and remains open through the first intermission only. On performance Saturdays only, the Ticket Office is open from 11:30 a.m. to 5:30 p.m. Ticket hours on performance Sundays begin at 1:30 p.m. Reservations may be made in person or by telephone with a credit card number.

Of course, rehearsals, set construction, classes and performance times often mean that staff and volunteers are likely to be available at other times than the hours noted during the week. For information, please call 330-836-2626. You may leave a voice mail message for a staff member, but we do not accept recorded ticket reservations. For any Ticket Office-related business, please call during Ticket Office hours.

Akron Area Arts Alliance

Weathervane Community Playhouse is a member of the **Akron Area Arts Alliance**. Its mission statement is "to utilize its collective resources to

- 1) foster communication and coordination among area cultural groups
- 2) generate greater awareness and participation in the arts and humanities in all segments of the community
- 3) promote the value of the arts and humanities to local governments and advocate its financial investment in the community's cultural activities."

Season Coupons

Seats for Weathervane's most popular shows, especially those late in the season, often sell out fast. Saturday night seating is frequently difficult to obtain, so it's smart to call for reservations early. *Please remember that coupons don't guarantee your seats. You must call for reservations.* Check the production schedule in your Super Coupon book and plan to use as many coupons as you wish for the shows you plan to see. We hope you'll use your convenient coupons frequently and won't find yourself missing out on sold-out shows or ending the season with unused coupons. Performances and schedules are subject to change so, for the most up-to-date information, call our ticket office at 330-836-2626.

Remember, you can always buy a new Super Coupon book at the Ticket Office any time you want to treat yourself and several friends to a Weathervane show. Books of eight coupons provide a modest savings over regular admission prices.

Mission Statement Weathervane Community Playhouse

The mission of the Weathervane Community Playhouse is to entertain, inform and educate, thereby enriching the cultural life of the Greater Akron area. Weathervane shall provide area residents the opportunities both to attend and to participate in quality presentations of a cross-section of the finest theatrical works available. Weathervane shall provide education in the theater arts to adults and children. In meeting these goals, Weathervane shall be mindful of the standards of its audiences and shall maintain fiscally sound management.



Before You Throw It Out, Ask Us

Weathervane can often make good use of used furniture and household items so please think of us when you're redecorating, cleaning or moving. Small rugs, carpet remnants, draperies or curtains are also appreciated.

Our wardrobe department also appreciates donations of clothing, shoes, women's purses, hats and jewelry, as well as usable patterns and lengths of fabric.

Please call before bringing donations to the

theater so we can tell you what may be needed most by our property or wardrobe department.

If we can't make use of your much-appreciated gifts, they may be passed on to another charity. We also, every so often, hold a rummage sale to clear our storage areas of items that we find we haven't been able to use. Your donations are appreciated and you may even see a favorite piece on stage some day.

We're not the same old Song & Dance at



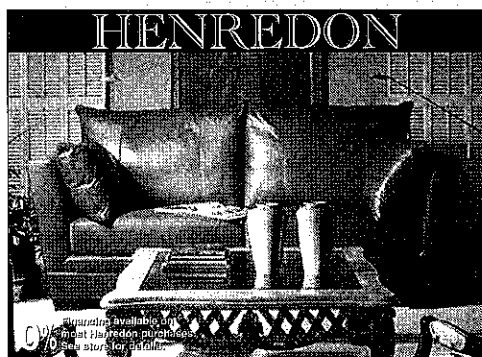
Stinaff's
DATA FORMS & SYSTEMS
SINCE 1936

44 S. Summit St. • Akron, OH 44308
330-434-2106 • Fax 330-434-9376

LASER/COMPUTER FORMS & SUPPLIES • FULL COLOR PRINTING • FORMS MANAGEMENT



The Best Place For Fine Furniture in Greater Akron is at Wayside



- Over 200,000 sq. ft. of inventory.
- Providing friendly, responsive service for over 65 years.
- Professional interior designers on staff.
- We buy and sell for less ... every day.

Fine pieces from these quality manufacturers on display:

Thomasville • Pennsylvania House
Stanley • Lexington • Nautica
Lane • Smith Brothers • Flexsteel
Bob Timberlake • Cochrane
Thomas Kinkade • Broyhill • Clayton Marcus
Canadel • Howard Miller • Hooker
Sumter • Crescent • Dozens More

Visit our newly-opened 10,000 square-foot addition!

Wayside
furniture

"Where You'll Find Better Furniture Priced Lower"

1367 Canton Road Akron On Route 91,
just 1/4 mile south of Route 224
Shop Daily 10 to 9, Saturday 10 to 6, Sunday 1 to 6
Visit our website: www.wayside-furniture.com

(330) 733-6221

Enjoy Our Premier Performance



AKRON BEACON JOURNAL
There's something in it for you.



We're Proud Of Weathervane Volunteers

Weathervane began as a volunteer organization and continues its growth thanks to the time and talent members of our community continue to invest in it. Our on-stage performers have worked long and hard to earn your applause. But their work is supported by many other unseen men and women who've helped build and paint sets, run the lights and sound, make sure that properties and set dressing items are in their proper places and do other backstage labor from stage managing to costuming and make-up. Supporting those who are actively involved in putting on each show are still more volunteers who usher, house manage, sell tickets, keep our office running and serve on our Board of Trustees, Board committees and Women's Board.

Their spirit is the backbone of our continuing operations, a valued support on which our professional staff relies.

Each month, we acknowledge the outstanding Volunteers of the Month in our lobby, but those volunteers represent all who commit their time and interest to create a great theater experience for everyone who's come to see this show.

If you have friends or relatives who volunteer generously at Weathervane, we hope you'll take a moment to thank them for their help and their support of the cultural enrichment of our community. Better yet, join them! Call us and we'll help you win your own share of the applause for a "jolly good show," an experience that offers unique challenges with every performance.

Share the Annual Chanticleer Celebration

Shortly after the final production of each season, Weathervane volunteers and friends share an exciting party to acknowledge outstanding performances by performers and technical volunteers. The top performers are awarded rooster statuettes—Chanticleers—in recognition of their work, as voted by Chanticleer "judges" who have seen all productions during the season. It's a great night to get together, share hopes, fun and festivities and is open to all.

If you'd like to take an additional part in Chanticleer night and serve as a juror to vote for the award winners, all that is required is your affidavit that you have seen all seven shows during the season, and your choices for outstanding lead

performances by a male or female in a drama or comedy, outstanding support performances, and outstanding lead and support in a musical as well as choices in technical achievement. Chanticleers are also awarded for Properties, Lights, Costumes and Sound Design, plus Best Production of the season. In addition to performance and production awards, the event also recognizes outstanding volunteers of the year.

Chanticleer ballots are available during the run of the season's final show in July or August each year. We welcome regular theater-goers who'd like to take part in the jurying and join us for the biggest nail-biting party of the year. For information, please call our office.



Put On Your Own Show

Let our space be your space for company sales meetings or seminars. Club or organization meetings, even weddings, can often be conveniently staged at Weathervane! Tell us what you may require and we'll help you with arrangements at reasonable rental rates when productions or construction are not going on at the theater. Our kitchen facilities and technical equipment may help you set up a very important gathering. For information, call (330)836-2323.

Organization Benefit Opportunities

A benefit night or matinee at Weathervane can add funds to your club or organization treasury and could be an exciting annual event. Check the schedule of this season's productions. Perhaps one of the shows will dovetail with the aims and purpose of your group.

Discounted tickets for groups of 15 or more may be sold at a profit or passed along to your members. To create a dramatic fund-raiser or special celebration, you may also plan for catered refreshments. Your fund-raising chairman can get further details on a benefit night at Weathervane by calling Front-of-House Coordinator, Keith Campbell.

Boutique Treasures

Our lobby Gift Boutique is a fund-raising project of Weathervane Women's Board. Shop from one hour before curtain time or during intermission to find exciting jewelry, watches, bibelots, music boxes, and other unique items and objects for yourself or for gifts. Every purchase helps make good

things happen at Weathervane. Prices are extremely reasonable and the items on sale include a delightful variety from clowns and animal figures to pens, pins and earrings. Our Boutique volunteers will also assist you with information on gallery art works which are for sale.

Gift Certificates — Always Available

Whatever the occasion, a Weathervane Gift Certificate will fit! Please friends or family members with a night (or nights) of live theater. Weathervane Gift Certificates may be issued in any amount you choose. All the recipient needs to do is to call for reservations to the preferred perform-

ance. We'll do the rest with a memorable production during our season. Just ask for a Gift Certificate at the Ticket Office. You may pay with check or charge card to give a Weathervane gift you know your friends or family will applaud.

Come in and
try our delicious
Mexican food.

El-Canelo II



1730 Merriman Road
(330) 865-9537

15% Off Your Total Bill

El-Canelo II • Not valid with any other offer.

Expires July 31, 2003



The Weekend College

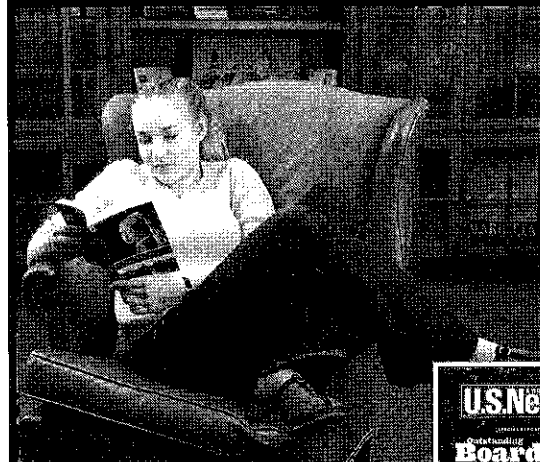
Weekend College

- Five enrollment opportunities throughout the year
- Classes meet EVERY OTHER weekend
- Eight majors to choose from

Call (330) 569-5161 or visit our
website at www.hiram.edu/wc

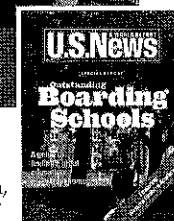
The Weekend College at
Hiram College

Researching your future?



EXPLORE WESTERN RESERVE ACADEMY

- Ninth oldest boarding school for grades 9 - 12
- Exceptional Faculty
- Small Classes
- Beautiful Campus
- Coed with students from 22 states and 16 countries



Featured in
U.S. News &
World Report



**WESTERN RESERVE
ACADEMY**
115 College Street, Hudson,
Ohio 44236 • 330.650.9717
www.wra.net

**An essential resource
for the arts.**



**Akron-Summit County
Public Library**

www.ascpl.lib.oh.us



*Weathervane Playhouse
thanks
Tiffany Bakery
for the beautiful opening
night cakes.*

Tiffany's Bakery
Elegant Selections



Wedding Cakes

330-753-0017

2176 Romig Road
Akron, OH 44320


STEINWAY & SONS
The World's Finest Piano

Steinway Hall - Akron

715 East Buchtel Avenue • Akron, OH 44305 • 1-800-356-0437 • 330-535-6070

A WORLD-CLASS MUSEUM JUST MINUTES AWAY



2002-2003 EXHIBITIONS

**My Reality: Contemporary Art and the
Culture of Japanese Animation**
Sept. 21, 2002 - Jan. 5, 2003

**Rodin: Selections from the Iris and
B. Gerald Cantor Collection**
Jan. 25 - May 18, 2003

**FREE ADMISSION
OPEN EVERYDAY**

**Akron
Art
Museum**

Frederick C. Friesels,
Through the Veil, around
1908, oil on canvas

70 East Market Street, Akron, Ohio 44308-2084
330.376.9185 www.akronartmuseum.org



Weatherwane Traditions

Meet the cast. It's a Weatherwane tradition that, after most shows, many of the cast members may spend a few minutes in the lobby area to meet and greet friends from the audience. It's your chance to thank them for their performance.

Intermission Tea is served with our compliments by our volunteer hosts and hostesses. Please enjoy a cup with us. Soft drinks are available at a nominal cost.

Opening Night Receptions welcome our audiences on the first Friday night of each production. We'll provide light snacks and refreshments after the show so you can share that "first-nighter" feeling.

For your sweet tooth, snacks are available for purchase before the show and during intermission. Refreshments are not permitted in the auditorium.

Beware of the Dreaded No-Show

Have you ever seen empty seats at a *sold out* sporting event or concert? Weatherwane has the same problem. Single-ticket buyers and subscribers who may have exchanged from another performance wonder why they weren't given those prime empty seats for the evening.

When you buy a subscription, you are *promising* to come to the theater for that ticketed performance and we hold your seat(s). These subscription seats are held until intermission. This, additionally, makes it impossible to tell if a performance is ever really *sold out* and annoys ticket buyers who see that they could have been seated in a better spot.

Subscribers: Please call the Ticket Office at 836-2626 if you will not make your ticketed performance. Thanks.

Money-saving super Super Coupon Books

Help You Save!

coupon books are available all season. Booklets contain eight coupons and serve as pre-paid admissions for mainstage series productions. Use them one-at-a-time or all at once!



Where Theater Comes Alive!

Membership Helps Us Grow

Individuals and businesses who believe strongly in the value of community theater to enrich the area are always welcomed as new or renewing members of Weatherwane Community Playhouse. For those whose names are listed in the program, there are many benefits, not the least of which is the pride you can share in supporting the mission of live theater's education and entertainment values.

Your support and commitment are welcome and appreciated any time and is needed now more than ever. For those who are already members, we suggest that an increase in your membership may be an idea whose time has come in the face of dwindling government resources.

If you truly enjoy live theater, you'll be playing a vital part every time the lights go up for each show on the Weatherwane stage and we can honestly say that the show couldn't go on without you.



Who Gets On Stage at Weatherwane?

The performers you see on the Weatherwane stage come from throughout the greater Akron and surrounding areas. They're volunteers, just like the many men and women who supply backstage talent to make sure the show goes on performance after performance. They've committed themselves to four to six weeks of rehearsals plus performances, and their greatest reward is your applause.

Many performers come to our shows with substantial theatrical experience. Others may be new to the stage. Frequently we find that talented newcomers to our area find that Weatherwane is a great way to make new friends especially if they've been involved with community productions in their former home town.

Auditions are open to all and our non-traditional casting policy opens the way for performance opportunities for ethnic minority actors and others who may be physically or mentally challenged. Except in cases where race, gender, age or disability is essential to the play, all roles are cast on the basis of talent and sincerity of purpose.

To find out how you can get on stage, check the newspaper for audition dates and times or call Weatherwane at 330-836-2626 if you are interested in auditioning for a role in one of our upcoming productions or in a Youth

Theater production. We'll tell you about requirements.

Weatherwane shows are never "pre-cast." When you've been in a show or auditioned, your name will be included in our file so we can send you future audition notices. Some guest directors prefer to set appointments for audition times and may ask that you come prepared with a brief monologue, improvisational subject or musical number. Copies of plays scheduled or audition scenes are often available for a nominal deposit.

When you arrive at the theater on audition nights, you'll learn about the rehearsal and performance schedule ahead. You may also register as a production volunteer if you're interested in learning about the technical opportunities in the show.

You may be asked to return for callbacks and will be notified of the director's cast selection as soon as possible. Please note that if you don't win the role you've wanted so badly, it may not necessarily reflect on your talent. The director's choice of cast members must take many factors into account to develop the proper "relationships," style and reality of the ensemble. Don't be discouraged. Come try again. The next show may suit you even better!



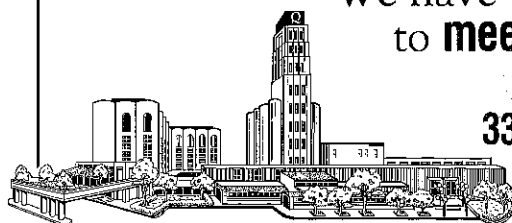
Meetings, or Banquets or Holiday Parties



10... 100... 500... 1000... 1500... people

We have the party rooms
to **meet** your needs

Contact Us...
330.253.5970



Crowne Plaza® Quaker Square ♦ Downtown Akron, Ohio 44308
Call 330.253.5970 or visit us on the web www.quakersquare.com



Flooring to applaud.

See a thousand exciting options, including
luxurious Anso Nylon® carpeting, at
Northern Ohio's largest flooring showrooms.

WCCV
FLOORING DESIGN CENTER

Anso
Caress
NOT STAINABLE. NOT EASILY MOIST. NOT EASY TO CLEAN.

1531 Commerce Drive, Stow, OH 44224 T: 330-688-0114
5732 Dressler Road NW, North Canton, OH 44720 T: 330-494-4726
www.wccv.com Store hours: M & Th, 10-8; T, W, F, S, 10-6

DON'T COME TO MALONE

because of our passion for Christianity in the arts.



COME BECAUSE OF YOURS.

You love Jesus. You love the arts. You know that your passion for the arts can be used to reach others for Christ. So do we. For example, wait until you see Malone's program in Commercial Music Technology. You'll study under professional musicians like Mark Townsend (pictured above), former guitar player for dcTalk! Get ready to be challenged in a whole new way. Experience what true success is in your spiritual walk, academic career, and life.

Get to know us at www.malone.edu
or call **1.800.521.1146**

MALONE
COLLEGE
CHRIST'S KINGDOM FIRST



I Want to Know More About Opportunities for Involvement at Weathervane

Complete and detach this form and return it to the Ticket Office or mail to:
Volunteer Opportunities, 1301 Weathervane Lane, Akron, OH 44313-5186

NAME _____

ADDRESS _____

CITY _____ ZIP _____ PHONE _____

I am interested in the following areas: (Check as many as you wish)

<input type="checkbox"/> Acting	<input type="checkbox"/> Costuming	<input type="checkbox"/> Box Office
<input type="checkbox"/> Set Building	<input type="checkbox"/> Orchestra	<input type="checkbox"/> House Managing
<input type="checkbox"/> Painting	<input type="checkbox"/> Sound	<input type="checkbox"/> Play Reading/Selection
<input type="checkbox"/> Usher	<input type="checkbox"/> Lighting	<input type="checkbox"/> Board Membership
<input type="checkbox"/> Backstage Crew	<input type="checkbox"/> Classes	
	<input type="checkbox"/> Fund Raising	
<input type="checkbox"/> Other _____		

☐ Best time to reach me at the above phone number _____

☐ I am a subscriber. ☐ I am a donor.

I HAVE AN OPINION...

About tonight's play _____

About the current season _____

About future seasons _____

I have a fund-raising idea. _____

We appreciate, and often respond to, opinions offered about our work. Be sure to fill in your name and address above if you wish a response or would like to be contacted.



What Can You Do as a Weathervane Volunteer

Here's a quick introduction to the responsibilities volunteers undertake to make our shows work night after night. If you'd like to try your hand at any of these jobs, please call our Production and Volunteer Coordinator, Maryanne Cotter, at 330-836-2323. Volunteers with 100 hours or more of service are eligible for a special Weathervane membership!

★ **Stage Management** - Duties include assisting the director throughout the rehearsal period, calling cues, keeping backstage safe and orderly, and coordinating the technical needs of the show with the actors. A fulfilling responsibility for those who enjoy planning, communicating and taking charge. Once the director's work is done, it's the Stage Manager who runs each performance.

★ **Set Construction** - Use your building skills, carpentry or painting techniques to help make illusion come to life. We appreciate all the help we can find to design and build sets, move them and tear them down after a show to make new ones.

★ **Costumes** - Designers and workers are vital. We need skilled and even unskilled seamstresses to make or alter costumes, create patterns, care for costumes during a show and keep our wardrobe department organized. Add your design ideas or learn from other hard-working volunteers.

★ **Lighting** - Experience is a plus, but you can learn by assisting others who know computers and electrical requirements. We'll train eager volunteers to help hang, focus, and add color to lighting instruments. We'll also teach you how to run the light board and follow spots. You'll take pride in knowing that nobody can see the show without you.

★ **Sound** - Create the music and sound effects tapes that enrich the aural environment for each show or add "live" backstage sound. Run the sound system

for technical rehearsals and productions. We'll help you learn.

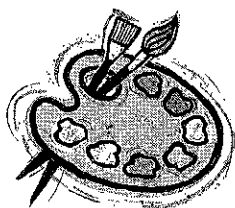
★ **Properties** - All the items that help "dress" a set and all those used by actors in rehearsal and performance (from tea sandwiches to "deadly" weapons and "shattering" windowpanes) must be borrowed, built or cooked. We need many volunteers to work on each performance. If you are clever at building things or have friends with "neat stuff" they'll loan, volunteer here.

★ **Box Office** - If you enjoy dealing with the public, we can use your help during office hours and on show nights to assist in taking money and answering the phone to take reservations.

★ **Ushering** - Welcome audience members with your smile, showing them to their seats, passing out programs, and serving refreshments at intermission. Your help is always welcome.

★ **House Manager** - The theater's unofficial representative greets the audience, tears tickets and guides theater-goers to ushers for seating. You'll work with the stage manager to coordinate the timing of intermissions and remain in the lobby throughout the show to handle any emergency.

★ **Office Volunteer** - Put a few morning or afternoon hours to good use answering phones, taking reservations, helping with mailings, working with staff, and greeting customers and visitors. Many friendly people are needed to help.



Given the fact that we're
in finance, we've always
been partial to Monet.

Bank One is proud to support the arts.
And not just the impressionists.



www.bankone.com
50 S. Main - Akron

Member FDIC.
©2002 Bank One Corporation.



The arts
start here.

Art starts with inspiration.
Inspiration starts with new experiences.
New experiences are our business.
That's the Akron Advantage.

www.uakron.edu



"At The University of Akron, we have set the stage for world-class excellence in the arts. By developing new generations of artists, partnering with arts organizations, and providing local venues for internationally-acclaimed theatrical and musical productions, we continue to help define the social and cultural landscape of Northern Ohio."

- Luis M. Puenza
President, The University of Akron

The University of Akron is an Equal Education and Employment Institution

The
University
of Akron



At Key, we're proud to support The Weathervane Playhouse. Your performances raise the quality of life for everyone in our community. And that definitely deserves a round of applause.



**Achieve
anything.**

1.800.KEY2YOU®
Key.com

Banking • Investments • Insurance

Key.com is a federally registered service mark of KeyCorp. Securities are offered through McDonald Investments Inc., A KeyCorp Company and member NASD/NYSE/SIPC. Investments and Insurance available through affiliates of KeyBank:

• NOT FDIC INSURED • NO BANK GUARANTEE • MAY LOSE VALUE