



WEATHERVANE COMMUNITY PLAYHOUSE

Where Theatre Comes Alive!

*A season of celebration!*

2002-2003 Sixty-Eighth Season



By Joseph Kesselring

production no. 499

*Wala Lucia Manago*

# Arsenic and Old Lace

M A I N S T A G E

January 15 - February 9, 2003



Our thanks  
to the  
performing  
artists of  
northeastern  
Ohio.



**audio-technica.**

Audio-Technica U.S., Inc., Stow, Ohio  
Audio products for home and professional use.  
[www.audio-technica.com](http://www.audio-technica.com)



modern style...  
old-fashioned service

**KAUFMANN'S**

All the right choices





## 68th Season

### Weathervane Community Playhouse

1301 Weathervane Lane, Akron, OH 44313-5186  
330-836-2626 Fax 330-873-2150 email: wcpakron@aol.com  
on the web at www.weathervaneplayhouse.com

#### 2001-2002 MAINSTAGE SEASON PRODUCTIONS

#497 - #502

September 18 - October 6, 2002

#### *The Chosen*

Drama by Aaron Posner & Chaim Potok  
Based on the novel by Chaim Potok

October 16 - November 3, 2002

#### *The Wiz*

Musical based on L. Frank Baum's The Wonderful Wizard of Oz  
Music & Lyrics by Charlie Small

January 15 - February 9, 2003

#### *Arsenic and Old Lace*

Comedy by Joseph Kesselring

February 26 - March 16, 2003

#### *The Laramie Project*

Drama by Moises Kaufman  
& The Members of the Tectonic Theater Project

April 2 - 19, 2003

#### *The Complete Works of William Shakespeare (Abridged)*

Comedy by Jess Borgeson, Adam Long  
& Daniel Singer

June 18 - July 20, 2003

#### *Gypsy*

Book by Arthur Laurents  
Music by Jule Styne  
Lyrics by Stephen Sondheim  
Program subject to change

#### YOUTH/FAMILY PRODUCTIONS

July 27 - August 11, 2002

#### *The Emperor's New Clothes*

by Charlotte Chorpenning  
Story by Hans Christian Anderson

November 23 - December 22, 2002

#### *Joseph and the Amazing Technicolor Dreamcoat*

Musical by Andrew Lloyd Webber

March 15 - 30, 2003

#### *Hamlet*

by William Shakespeare



#### WEATHERVANE WOMEN'S BOARD

presents

#### *The Brementown Musicians*

Performed by the Piper Puppets  
April 26, 2003



## Patron Information

★ **Emergency Exits** are located at the left front of the auditorium and the left side of the lobby. Front door and main lobby side exits will also be used in case of emergency.

★ **Restrooms** are found just off the entrance lobby ramp at the rear of the auditorium. Both men's and women's restrooms are wheelchair accessible.

★ **Handicapped Services** include seating for a limited number of wheelchairs. Please notify in advance if needed. Exterior and interior ramps make access easy for wheelchairs.

★ **Assistive Listening Devices** are available at the Box Office for the hearing impaired. This service is available thanks to the generosity of Virginia and J. Robert Wilson. In addition, some performances at Weathervane may feature American Sign Language or audio-description translations.

★ **Patrons** who are expecting calls should leave name and seat number with the House Manager. Please turn off your cell phones, pagers and audible watches.

★ **Beverages and Food** may not be taken into the auditorium during performances.

★ **Use of Cameras, Tape Recorders, TV cameras** is prohibited during performances.

★ **Curtain time** - Every effort is made to begin shows promptly at 8 p.m. for evening performances and at 2:30 p.m. for Sunday

matinees. We appreciate audience courtesy in arriving on time.

★ **Latecomers** will be quietly seated at the rear of the auditorium during a suitable break in the play if space is available and may take their reserved seats after intermission.

★ **Exiting the Theater** - For safety and as a courtesy to other patrons and the performers, please remain seated until the auditorium lights are on at intermission or after the show. Auditorium doors will not be opened until the house lights are on. Parking lot illumination assures that getting to your car will be easy and secure.

★ **Smoking** - Weathervane Playhouse is a smoke-free facility. Smoking is permitted outside the building.

★ **Lost and Found** items will be held at the Ticket Office until claimed. Please inquire about them during business hours.

★ **Comments** from audience members are always welcomed with interest. Please feel free to write to Weathervane or call us to express your views and opinions about our productions, play selection or other matters. We appreciate hearing from you and will respond. Please send your comments to: *Executive Director, Weathervane Community Playhouse, 1301 Weathervane Lane, Akron, OH 44313-5186.*

# BOXES PLUS™

Fairlawn Town Centre  
330-836-3377

Stow Retail Park  
330-342-1226

Akron's largest selection  
of unique greeting cards

Full-service gift wrapping,  
packaging and shipping

Avoid paying up to 70%  
in estate and income taxes.



Sound financial planning  
allows you to leave more  
for your family and make  
the gift of a lifetime to  
The University of Akron.

Contact David Horn  
Director of Planned Giving  
The University of Akron  
330-972-6870, or  
e-mail [dhorn@uakron.edu](mailto:dhorn@uakron.edu).  
Ask for the booklet  
entitled Giving Through  
Retirement Plans.

**The  
University  
of Akron**

The University of Akron is an Equal  
Education & Employment Institution.

Paul A. Dorn (64)



**THE PLAIN DEALER** [CLEVELAND.COM](http://CLEVELAND.COM)  
**BROADWAY SERIES**  
[www.playhousesquare.com](http://www.playhousesquare.com) 2002-2003





**Disney's  
THE LION KING**  
June 27 -  
August 17, 2003  
State Theatre  
ON SALE FEBRUARY 8TH



**THE PRODUCERS**  
the new  
MEL BROOKS  
musical  
October 1 - 20, 2002  
Allen Theatre



**ROBERT  
GOULET in  
SOUTH  
PACIFIC**  
Nov. 5 - 17, 2002  
Palace Theatre



**STONES  
IN HIS  
POCKETS**  
January 7 - 19, 2003  
Palace Theatre



**42ND  
STREET**  
Feb. 10 -  
March 2, 2003  
Palace Theatre



**THE FULL  
MONTY**  
March 25 -  
April 6, 2003  
Palace Theatre



**LATE NITE CATECHISM**  
Starting in January, 2003  
Your instructor  
will notify you  
of the class  
location!

**FOR TICKETS CALL:  
216-241-6000**

Groups of 20 or more, call 216-771-4444  
[www.playhousesquare.com](http://www.playhousesquare.com)







**DESTINATION: PLAYHOUSE SQUARE CENTER...WE BRING THE WORLD TO YOU!**





## From the Barn to the Valley A Brief Weathervane History



From 1935 until 1951, Weathervane was housed in a modest carriage house barn on Marshall Avenue in Akron. The Barn, as it was known, has long since been destroyed but there are still a few people who recall its cramped quarters and especially the energy and devotion of the four ladies, Grace Hower Crawford, Laurine Schwan, Helen Troesch and Muriel MacLachlan, who believed that Akron deserved the best in theater and that volunteers could make it all happen. The plaque in our lobby lists the names of the other founders who shared their commitment and who joined their ambitious mission, producing everything from light comedy to Shakespeare and opera.

Though the Barn is now only a memory, its rooftop weathervane gave the theater its name and logotype character, the Chanticleer.

Except in 1948 when located at the Pythian Temple, the Barn was home to Weathervane until 1951. Then the organization renovated a building on Copley Road and became a more accommodating 100-seat facility. In 1960, Weathervane hired its first professional director, Bob Belfance, who served until 1992. Along with long-time custodian/ticket office manager, Nora Scott, the two-person staff relied on volunteer support. Paid guest directors and children's theater instructors served in part-time positions and Weathervane existed on a lean budget. Ticket office receipts, along with donations and community support, helped Weathervane meet expenses and created a modest endowment fund. Volunteers still nourish all of Weathervane's activities.

In the mid-1960s, a fund-raising drive resulted in construction of the present 263-seat facility which opened in 1970, one of the first enterprises at the head of the corridor into the Cuyahoga Valley National Recreation Area. Thanks to Grace Crawford's legacy, the mortgage has since been paid off. Growing audience demand for live entertainment and theater education continues to underscore Weathervane's needs for increased community support.

In its nearly seven decades, Weathervane has constructed, torn down, recycled, painted and refitted stage settings for more than 500 productions (when Stage Two and Youth Theater productions are included). We've stitched up hundreds of costumes, created lighting magic by the multi-watt, crafted reality out of scores of stage properties and, most of all, shared the talents of well over a thousand amateur performers, who take their performance curtain calls to the applause of more than a hundred thousand theater goers. This effort is the result of volunteer dedication based on the founders' original philosophy that "all who can contribute are welcome."

Our volunteer archivist, Cue Fleming, has compiled the impressive list of productions back to 1935, a record of the dedication of those who have given their time to present each show to please the audiences who seek entertainment excellence each time the lights go up. Share the link to Weathervane's past by joining in the applause for today's performance.

*NOTE: Weathervane always appreciates donations of past programs, photographs or other theater memorabilia which can be added to our archives kept at the University of Akron. Thank you.*



## Ticket Information

★ **Tickets** may be purchased by telephone when you call 330-836-2626 Tuesdays through Fridays from 10 a.m. to 5:30 p.m. You may also purchase tickets in person during these hours. On performance Saturdays only, the Ticket Office is open from 11:30 a.m. to 5:30 p.m. The Ticket Office is also open one hour prior to all performances and remains open through the first intermission.

★ **Telephone reservations** must be charged to a Visa, MasterCard or Discover credit card. Reservations are also required when using coupons from your Weathervane Super Coupon book, complimentary tickets or coupons offered from any other cooperating arts organization. Please arrive at the Ticket Office at least 20 minutes before curtain time to pick up your tickets. Any unclaimed tickets will be released for sale to waiting ticket buyers five minutes prior to curtain at the discretion of the Ticket Office Manager and volunteers.

★ **Special seating** - Please inform us if you have seating preferences, or require special attention due to visual, auditory or other physical needs. We'll do our best to accommodate you, but please remember orders are filled on a first-come, first-served basis with season subscribers and advanced group sales taking first priority.

★ **Super Coupon holders** are reminded that coupons do *not* ensure seats for a specific performance. Please call the box office early to reserve seats with these pre-paid coupons.

★ **Season Subscriber Exchange** - Please call the Ticket Office at 330-836-2626 if you wish to exchange your subscription seat for another performance of the same show. Exchanges must be phoned in at least 24 hours prior to your originally

scheduled performance. We can't always guarantee the same seats but we'll give you the closest available replacements. An upgrade fee will be charged when changing subscription seats from a Preview Night to any other performance. *If you cannot use your subscription seats, please call us at least 24 hours in advance to release them. We will recognize this as a donation to Weathervane.*

★ **Student Rush Tickets** go on sale 30 minutes before curtain time allowing students with valid ID to purchase remaining tickets for half price on the night of performance, pending ticket availability. These tickets cannot be reserved in advance.

★ **Complimentary Tickets** for cast members and production volunteers require reservations and may be used only on designated performances. Complimentary tickets distributed to special donors also require reservations but may not be restricted to specific performances. Please let us know you wish to use a complimentary ticket when you telephone for a reservation.

★ **Discounted Group Reservations** are available for groups of 15 or more. Call Weathervane at 330-836-2626 to learn how you can entertain friends, associates, or clients with a night at the theater or to plan a fund-raising event for larger groups.

★ **Gift Certificates** are available through the Ticket Office at any time in any amount you choose.

★ **Recycle your playbills** - Anyone who doesn't wish to keep the playbill as a souvenir may drop it in our recycling box near the main entrance. We request that you do not bend, fold or deface the playbills as we will use them again for subsequent performances. Thank you.



“One of America’s  
Best Hospitals”



**Old  
Trail  
School**

The Pathway to  
Quality Education

Preschool through Grade Eight

2315 Ira Road in Bath, Ohio near Hale Farm 330-666-1118 Visit our Web site at [www.oldtrail.org](http://www.oldtrail.org)



## POINTE WEST PERFORMANCES

*“Eclectic Repertory  
for the Serious Dancer”*

Call (330) 668-1254 for information  
about our 2002-2003 Repertory Season  
& Audition Dates



Ohio Arts Council

## Building Ohio Through the Arts

Supporting organizations  
with state tax dollars  
to encourage  
economic growth,  
educational excellence  
and cultural enrichment.



Share the Arts

727 East Main Street  
Columbus OH  
614/466-2613  
[www.oac.state.oh.us](http://www.oac.state.oh.us)

Visit today.

Arts in Ohio.com

Find what, when and where arts and cultural events are  
happening in Ohio. You can do just search the event  
finder by what, where or date. It's most important to you.

# OOPS

NOT SPOKEN HERE.



**WELTY  
BUILDING  
COMPANY LTD.**

ESTABLISHED 1945

No sheepish grins. No excuses either.  
Construction management or  
design/build services for your project.  
On time and on budget.  
End of story. Call Don Taylor, CEO.

123 S. Miller Road, Akron, Ohio 44333  
330-867-2400 Fax: 330-864-4566  
[info@weltybldg.com](mailto:info@weltybldg.com)  
[www.weltybldg.com](http://www.weltybldg.com)

THE CREATIVE BUILDERS





## Women's Board

The Women's Board was formed in 1938 to "offer voluntary service and financial assistance to the Playhouse" and has been a vital part of Weathervane functions ever since. Women's Board has energized the youth education program, sponsored productions, spearheaded fund raisers and paid for many of the amenities audiences and production volunteers continue to appreciate in the Green Room and kitchen. Members of this active group are invaluable as hostesses, office helpers and hard workers on backstage projects. The Women's Board sponsors an annual puppet presentation for children and also operates the Gift Boutique and art gallery as on-going fund sources.

Weathervane Women's Board welcomes new members who serve an apprenticeship allowing them to explore the full spectrum of Weathervane activities in which they may wish to participate. Membership is open to all. If you are interested in becoming part of this vibrant organization, please let us know. Leave your name at the Ticket Office or write: Weathervane Women's Board, c/o Weathervane Community Playhouse, 1301 Weathervane Lane, Akron, OH 44313-5186.

### 2002-2003 Women's Board Officers

Pat Obenour .....	President
Jean Questel .....	First Vice President
Susan Speers .....	Second Vice President
Alberta Carlin .....	Corresponding Secretary
Nancy Zeigler .....	Treasurer
Evelyn Stiggers .....	Assistant Treasurer

### 2002-2003 Women's Board Committee Chairs

Marci Paolucci .....	Art Gallery
Mary Wolfman & Barb Kistler .....	Boutique
Barbara O'Connor .....	Boutique Treasurer
Henrietta Cook & Dorothy Kies .....	Costumes
Lois Murray & Mina Agrawal .....	Hostesses
Alberta Carlin & Pat Weill .....	Newsletter
Marta Williger & Barbara Stevic .....	Cast Suppers
Marilyn Heagerty .....	Office Volunteer Scheduler
Lois Simmons & Linda Shearl .....	Hospitality
Liz Raines & Thelma Coss .....	Puppet Show
Betty Williams & B.J. Zeigler .....	Membership

The Women's Board welcomes new members.



## Patron Generosity

Weathervane appreciates the continuing strong support of individuals, corporations, foundations and other donors who help finance the theater's operations, capital improvements and endowment program. Weathervane is classified as a 501(c)(3) organization and contributions are tax deductible. Following are some of the many ways in which you can take pride in your support of the art of theater in our community.

### ★ Become a Weathervane Member.

Your annual support makes you a voting member of Weathervane Community Playhouse. You'll receive discounts on educational programs and other benefits, based on the membership level you choose. Members are invited to Weathervane's annual meeting and to other special events such as the Chanticleer Awards Banquet. Memberships are renewable annually, beginning at \$50 (Contributing), and continuing at Sustaining, Patron, Silver, Gold and Platinum Levels. Membership is actively solicited in the fall but is accepted at any time. Members are recognized in the Playbill.

★ **Give a Special Gift To Say You Care.** Special donations may be made at any time to memorialize a friend or relative whose interest in Weathervane was significant to his or her life. You may also recognize and celebrate important dates or current achievements of relatives, friends or associates.

★ **Remember Weathervane in Your Heart and in Your Will.** What better way to carry on your tradition of support to Weathervane than by a planned gift. By taking advantage of the tax laws which encourage charitable giving, the U.S. Government will share in the cost of your gift to Weathervane. Your gift can fulfill a specific purpose or project while providing your estate with tax savings. To help ensure that Weathervane will continue, please contact our Executive Director for more information.

★ **Check For Matching Gifts.** Many national and local corporations will match your donations to Weathervane,

increasing your generosity to the theater. Please check whether or not your company participates in such a program.

★ **Designate Gifts To Local Foundations.** Several of this area's larger foundations accept memorial and tribute gifts in the name of specific organizations such as Weathervane Community Playhouse. Such gifts help assure continuing grants to the theater's operations and special projects. We are enormously grateful for the impressive history of foundation support in this community.

★ **Sponsor or Underwrite a Production.** Our productions may be underwritten by local corporations or foundations. Benefits can include private "command performances" and special receptions for employees and friends when your business chooses this important method of support. Please call 330-836-2626. We'd like to discuss this kind of opportunity with your executive officers.

★ **Capital Project.** The new construction segment of the Capital Project included a scene shop with basement storage, a 2nd-floor classroom, a 2nd-floor rehearsal hall, soundproof corral with construction of a production booth and office, elevator and fly gallery pocket above the stage. Donations for Stage Two of the project continue to purchase classroom furnishings, update the lighting system, purchase and install the rigging system for the fly gallery, renovate the lobby and replenish the Capital Fund for maintenance and repairs through 2010.



The clear  
choice for  
children



**Children's**  
Hospital Medical Center of Akron  
One Perkins Square  
Akron, Ohio 44308-1062

### *Dress Up With Weathervane*

Churches, schools, individuals and other theater groups may find rentable costumes or theater properties and stage dressing for their own productions in the Weathervane wardrobe and set storage areas. Please call 330-836-2626 to arrange for a consultation on your special production needs.



**Graf Growers**  
Garden Center ~ Farm Market

1015 White Pond Dr. Akron  
330-836-2727 [www.grafgrowers.com](http://www.grafgrowers.com)

**We Applaud  
Great Performances!**

**WEST POINT MARKET**

(330) 864-2151 • FAX: (330) 869-8666 • Mon.-Fri. 8am-7pm • Sat. 8am-6pm  
1711 WEST MARKET STREET • AKRON, OHIO 44313  
WEB: [www.westpoint-market.com](http://www.westpoint-market.com) • E-mail: [gd taste@www.westpoint-market.com](mailto:gd taste@www.westpoint-market.com)



## HERE'S TO ANOTHER HIGH-ENERGY PERFORMANCE.

AT FIRSTENERGY, WE APPLAUD THE MANY CONTRIBUTIONS THE ARTS MAKE TO ENRICH AND BRIGHTEN OUR COMMUNITY. WE'RE PROUD TO SUPPORT THE EFFORTS AND DEDICATION OF ALL THESE FINE PERFORMERS.

**FirstEnergy**

2 2 3 8

**Luigi's**

"An Akron Tradition Since 1949"

- Award Winning Food
- Casual Dining
- Old World Elegance

Featuring Our Famous  
Homemade

- Pizza
- Lasagna
- Antipasto

**OPEN 7 DAYS**  
105 N. MAIN ST.  
**330-253-2999**

Another  
bright spot  
in the  
Arts  
in  
Akron

**DON DRUMM**  
Studios &  
Gallery

Over 800 top  
artists represented

437 Crouse St.  
Akron  
**330-253-6268**  
Weekdays 10-6; Saturday 10-5





## Theater Education at Weathervane



### Youth Education

Weathervane's mission to provide children's theatrical education began with Junior Weathervane classes in 1937. The education program has continued to grow since then with workshops and classes, plus production opportunities for children. In the 2001-2002 season, we offer professionally taught classes in acting, stagecraft, musical theatre and improvisation for children up to age 18. Fall and spring classes are held on Saturdays at Weathervane. In addition, two-week workshops for children are planned throughout the summer months. The cost is minimal with a limited number of scholarships available for motivated students and discounted fees for Weathervane members.

Children from throughout the community may also audition for roles in Youth/Family productions. Casting is not dependent upon class enrollment. Participation is an extension of valuable training in every facet of production from the audition process to technical and performance experience. Family members may also have learning opportunities by participating in such productions.

Weathervane works with area schools by providing outreach information and study guides in our **Project STAGE** program, which brings public and private school students to see as many as three productions each season. This season, *The*

*Chosen, The Wiz, The Laramie Project* and *Hamlet* will be featured in the **Project STAGE** events. Tickets are only \$8.

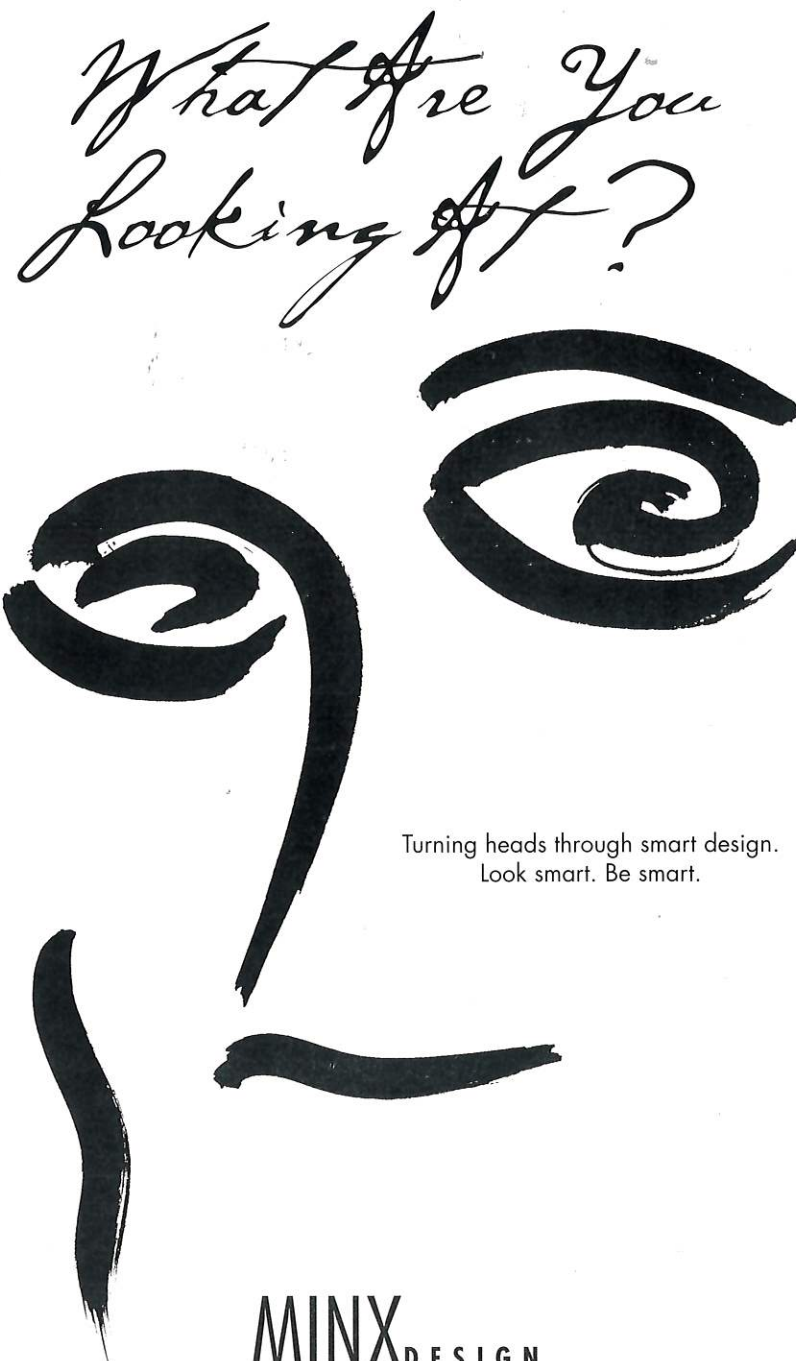
For information about classes or audition schedules for Youth Theater productions, please call our Education Coordinator at 330-836-2323.

### Adult Classes and Theater Training

Professionally taught fall and spring Adult Theatre Education classes include Scenic Design, Stage Lighting, Directing, Improvisation and Classical Drama. These classes help both new and experienced actors to expand their own performance and public speaking skills. Classes are held at the theater and costs are affordable. Call 330-836-2323 ext. 17 for details.

### Learning On the Job

Every volunteer participant in a production actually becomes part of Weathervane's continuing education process. You'll learn from more experienced actors and technical helpers who share the creation of production and performance. If you don't have time for structured classes, sign on to become a crew member or performer. We'll help you expand your knowledge of backstage and onstage responsibilities along with your own talents and imagination. Please call us at 330-836-2626 and let us show you how to give new wings to your talent and new meaning to your time.



*What Are You Looking At?*

Turning heads through smart design.  
Look smart. Be smart.

**MINX** DESIGN

330.762.4126 • 1.888.GET.MINX



**Our Lady of the Elms**

A Dominican Education for Girls.

Be Anybody. Start Here.

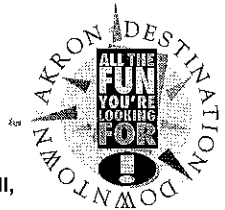
1220 W. Market St. • Akron, Ohio 44313-7108 • (330)-867-0918 • [www.ourladyoftheelms.org](http://www.ourladyoftheelms.org)

NPR. Classical.  
Other smart stuff.  
89.7 WKSU

*A Service of Kent State University*

# E. J. THOMAS HALL • THE NEW CIVIC

## E. J. THOMAS HALL THE NEW CIVIC THE UNIVERSITY OF AKRON 2002-2003 SEASON



Miss Saigon, 8 shows! October 1-6, EJ  
The John S. Knight Lecture presents James A. Baker III, October 21, EJ  
Swing!, October 24, EJ  
The Georgian State Dance Company, October 25, EJ  
Barrage, November 5, CT  
Ricky Skaggs & Kentucky Thunder, November 7, CT  
Time Warner Cable & AMC presents *Roman Holiday*, November 8, free, CT  
Tim Conway Show, November 9, CT  
Organ Concert with Lyn Larsen, November 10, CT  
Dr. Drew Pinsky, *lecture*, November 14, EJ  
Mandy Patinkin in Concert, November 16, EJ  
Warren Miller's *Storm*, (ski/snow board movie), November 16, CT  
Lord of the Dance, November 24, EJ  
Meredith Willson's *The Music Man*, 5 shows! November 29-December 1, EJ  
Colors of Christmas starring Peabo Bryson, Jon Secada, Jody Watley, and Oleta Adams, December 12, EJ  
TubaChristmas, December 21, free, CT  
Apollo Theater Amateur Night - Auditions, January 10, CT  
Star Wars Episode II: Attack of the Clones, January 12, CT  
Sesame Street Live "Let's Be Friends" January 16-19, CT  
Andrae Crouch, January 18, EJ  
STOMP, January 21-22, CT  
Coretta Scott King, *lecture*, January 27, EJ  
Apollo Theater Amateur Night - Live on Tour!, February 14, CT  
The Mark of Zorro (silent movie) with Organ, February 15, CT  
The Little Angels, Children's Folk Ballet of Korea, February 23, CT  
Madame Butterfly by The London City Opera, February 28, EJ  
University of Akron Dance Company, March 6 & 7, EJ  
David Brooks, *lecture*, March 10, EJ  
AEROS, March 14, EJ  
Cleveland Jazz Orchestra, March 14, CT  
P.D.Q. Bach & Peter Schickele: The Jekyll and Hyde Tour, March 15, EJ  
Arturo Sandoval, March 16, EJ  
BLAST!, 8 shows! March 25-30, EJ  
Apollo's Fire, The Cleveland Baroque Orchestra, March 28, CT  
Wait, Wait Don't Tell Me, April 3, CT  
Lani Guinier, *lecture*, April 7, EJ  
Keith Lockhart Lecture & UA Symphony Orchestra, April 10, EJ  
The University of Akron Steel Drum Band, April 11, EJ  
Elton John & Tim Rice's AIDA, 8 shows! April 15-20, EJ  
Carrot Top, April 24, EJ  
President Gerald R. Ford, *lecture*, April 28, EJ  
Laughter and Reflection with Carol Burnett, May 3, CT  
Vagina Monologues, 8 shows! May 6-11, CT  
Michael Feldman's Whad'Ya Know?, May 17, CT

Show Location: EJ = E. J. Thomas Hall CT = Civic Theatre

Performances, dates and times subject to change.

To receive a complete 2002-03 season brochure, call Thomas Hall at 330/972-7595.

Be watching our web sites [ejthomashall.com](http://ejthomashall.com) and [akroncivic.com](http://akroncivic.com) for updated season information.





## Weathervane Professional Staff

**ELYNMARIE KAZLE** (Executive Director) begins her sixth season for WCP. She has spent 25 years in theater first as a stage manager then in producing, fundraising and as a public relations rep for theaters across the US. She's had the pleasure of working with a wide range of artists from Mikhail Baryshnikov to Michael Korie, Ed Asner to Chita Rivera in theaters such as San Diego's Old Globe, Sacramento Theater Company, LA Classical Ballet, Opera Columbus, Great Lakes (Shakespeare) and Brooklyn Academy of Music. Akron was important to Elynmarie early in her career when she served as lighting apprentice to Tom Skelton and Ohio Ballet in the early 1980s. Her diverse experience in Marketing/PR includes a stint with the Wall Street Journal. She is currently VP of Membership and Development of USITT, VP of the Akron Area Arts Alliance and the founder of the nationally-known Stage Management Mentoring Project. She lives in Akron with her husband Mark and son Banno.

**JANIS L. HARCAR** (Director of Marketing & Development) holds an M.A. in Arts Administration from The University of Akron and a B.S. in Music Education from Kent State University and has been a Weathervane staff member since 1993. She serves as the Artistic Director of the Ravenna Community Choir and Director of St. Paul Lutheran Church Choir also in Ravenna. Jan occasionally serves as Musical Director for local productions.

**ALAN SCOTT FERRALL** (Scenic Designer/Technical Director) began at Weathervane under the tutelage of John R. Thomas. Learning the skills necessary to work full-time in the theater, Scott was hired at Cuyahoga Falls High School as auditorium manager, where he spent the next six years. During that time, he was awarded a

Design Excellence citation from USITT for Carousel, and a place in Who's Who Among America's Teachers. He has also designed for many local high schools as well as for The Players Guild, Cleveland Signstage and Channels 45/49. Scott has earned two Chanticleer Awards, one as stage manager for Fences, the other as lighting co-designer for A Man for All Seasons. Scott also takes great pleasure in writing the end-of-the-season revue for the Not-Ready-for-Mainstage Players who appear at our annual Chanticleer Awards Dinner.

**SEAN McCONAHA** (Director of Education and Producer of Youth/Family Productions) holds a dual major in Theater Performance and Pre-Law from West Virginia Wesleyan College and an M.A. in Theater from The University of Akron. He is co-founder of the Prodigal Theatre Company and is a free-lance actor and director throughout Northeastern Ohio. Sean directed the OCTA award-winning production of Romeo and Juliet as well as the 1999-2000 season's Chanticleer winner for Best Production, The King of the Kosher Grocers. He and wife, Beth, and daughters, Leda and Delaney, live in Canton.

**KEITH D. CAMPBELL** (Supervisor Front-of-House & Patron Services) holds a B.A. in English from The University of Akron, where he served as editor of *The Buchtelite* and sang with the Akron Symphony Chorus. During the summers of 1995 and 1996, he interned in the box office at Porthouse Theatre Company. Keith has done post-baccalaureate studies in Arts Administration at The University of Akron. This is his seventh season at WCP.

**JOHN COTTER** (Business and Public Relations Assistant) has the duties that come with helping Jan and Keith in the Marketing and Box Office areas. He also serves on Weathervane's Production Board as Co-



## Professional Staff continued

Chair of Auditions. John is a retiree of 36 years with Ohio Edison and has been a long-time volunteer of the Playhouse serving on the Production Board as its President and Co-Chair of Properties. He has also worked backstage for many productions and has won Chanticleers for Properties Design for four productions, his most recent being co-design of *The Philadelphia Story*. He is, however, most proud, of his two grandchildren, Dana and Nicholas.

**KATHRYN A. KOHL** (Assistant Technical Director) holds a degree in Elementary Education from BGSU and a Master of Business Management Degree from Aurora College in Aurora, IL. She began her volunteer career on the lighting crew of *Oliver!* and, since, has been on many lighting and set construction crews. She served as Properties Designer for *Dracula* and won a Chanticleer for properties co-design of *The Philadelphia Story*. Kathryn also volunteers as Resident Master

Carpenter and Master Painter for the Theatre Department at Firestone High School where she recently was awarded the Helping Hands Award, and with the Show Choir program at Miller South School for the Visual and Performing Arts. Kathy lives in West Akron with husband Doug and their three children, Stephanie, Zachary, and Katie.

**DREAJEAN L. BROWN** (Data Services Manager) rejoined the staff in August. She holds a Master of Science Degree in Technical Education and a Bachelor of Science Degree in Education from The University of Akron. She retired from the field of education six years ago and now is the Office Manager for the Ohio & Erie Canal Corridor Coalition. She is an active member of Delta Sigma Theta Sorority, Inc. Akron Alumnae Chapter. Drea spends her spare time with family and friends and enjoys reading, crocheting and traveling.

## Many thanks to Our Season Sponsors

Akron Publishing Company - Ad Sales  
Minx Design - Graphic Designer  
Ohio Arts Council - Season Sponsor  
PAX TV 23 - Season Sponsor  
Pucci's - Reception Sponsor  
Single Volunteers of Ohio -  
Reception Sponsor

Summa Health System - Sponsor for  
*Arsenic and Old Lace*  
Tiffany's Bakery - Opening Night cakes  
Trevia - Reception Sponsor  
WKSU 89.7 FM - Season Sponsor

## Single Volunteers Ohio

Ohio Singles Making a Difference in Our Communities  
Summit County Chapter

Have a desire to help others while having fun & meeting new people?  
Learn more about Single Volunteers by visiting our web site at  
[www.svohio.org](http://www.svohio.org)  
or send us an email at [svsummitohio@yahoo.com](mailto:svsummitohio@yahoo.com)

**A Single person CAN make a difference!**



*Looking for a place to dine before the show?*

### El Canelo II

1730 Merriman Road (in the Valley)

**330-865-9537**

*Come try our delicious Mexican food.*

Open Mon. - Thurs. 11 a.m. to 10 p.m.

Fri. & Sat. 11 a.m. to 11 p.m.

Sun. 12 Noon to 9 p.m.

### Luigi's

105 N. Main Street Akron

**330-253-2999**

Open 7 days

*An Akron Tradition since 1949*

*Award-Winning Food, Casual Dining  
Old World Elegance featuring our famous  
Homemade Pizza, Lasagna, Antipasto*

### Pucci's in the Valley

1244 Weathervane Lane

**330-836-6088**

Mon. - Sat. 5 p.m. to 10 p.m.

*Specializing in Italian dishes using only the  
freshest ingredients available.*

*Seafood, Steaks, Pastas and other creative cuisine.*

### Special Offer -- \$2 Discount...

**Save your ticket stub to *Arsenic and Old Lace*.**

Turn in your stub at Weathervane's Ticket Office and receive  
a \$2 discount off 1 full-price ticket to *The Laramie Project*  
February 26 - March 16, 2003.

### Special Luncheon Matinee...

***Arsenic and Old Lace* -- Saturday, February 1, 2003**

Combo Ticket \$28

Lunch at 12:30 Matinee at 2:30 p.m.

Appetizer, Chicken Salad, Sweet Potato Souffle, Dessert, Beverage

### Accessibility

Weathervane Playhouse is handicapped accessible. Ramps are available to the front doors, auditorium and seating.

Assisted-listening devices for the hearing impaired are available at the Ticket Office.

Large-Type program inserts are available at the Ticket Office. These copies are not full playbills but contain information unique to this production. These inserts are photocopied and are available in limited quantity.

American Sign Language interpretations are scheduled for selected Sunday performances.

Ohio Relay System 1-800-750-0750 TDD. Call to have your ticket order placed.



## Weathervane Board of Trustees

Weathervane Community Playhouse is a non-profit 501(c)(3) corporation operated by a board of volunteer trustees representative of the general community. Regular monthly meetings of the Board of Trustees are open.

### Officers

Dr. Steven P. Schmidt .....President  
Richard Worswick .....First Vice President  
Leslie Lund .....Second Vice President  
Jim Horvath .....Treasurer  
Ardith M. Keck .....Secretary  
Margaret J. Dietz .....Historian  
Thomas R. Trotter .....Immediate Past President

### 2002-2003 Board Members

Kathy Ashcroft	Terry Gordon	Karen Lefton	Tom Stephan
Barbara Baskin	Bud Grasko	Myron Lewis	Elinore Stormer
Mark Blaser	Roy Hartz	Doug Mory	Helena Sturkey
Clarence F. Carlson	Laura Kerchner	Sheila Motter	Mary Warholy
Tom Cousineau	Doug Kohl	George Moxon	Thomas Watkins
Paul Daum, PhD	Mary Beth Kluge	Patricia Obenour	Nancy Wilson
William Glaeser			

### Advisory Board Members

Mary Adams	W. Scott Emerick	Libby Jacobs	Bob Velotta
Barbara "Bunny" Ballance	Heleen Fleming	Eric Jones	Shari Whitfield
Jill Forster	Ardith M. Keck	Mary Wolfman	
Madeline Bozzelli	Dede Klein	Mel Wolfman	
Dr. Penelope Frese	Jo Ann Oelschlager	Mona Wolfman	
Ann Brennan	Richard Harris III	June Zeno	
Nancy Cates	Bob Hasman		
Ron Cimini	Marilyn Heagerty	Dr. Susan Speers	

### Production Board

**Mark A. Zimmerman -- Chair**

Auditions .....M.J. Coulson & John Cotter  
WOMEN'S BOARD Costume Shop .....Christine Schueneman  
FIRST ENERGY Lighting Dept. ....Mark A. Zimmerman  
Properties .....John Riazzi  
Sound .....Charles Korecki & Tom C. Barnes  
Stage Management .....Nikki Rafferty  
*Ex-Officio:*  
Women's Board Representative .....Jean Questel  
Producer of Youth/Family Productions .....Sean McConaha  
Technical Director .....Alan Scott Ferrall  
Salon Series Coordinators .....Tom Abdoo & Suzanne Smith  
Play Selection Chair .....Libby Jacobs  
Executive Director .....Elynmarie Kazle





## Our Generous Donors

*WeatherVane Playhouse gratefully acknowledges the financial support of our corporate, foundation and individual members. Their Membership helps keep admission prices low and helps us to maintain the high standards of production you've come to associate with WeatherVane. This list is updated throughout the season.*

### FOUNDER'S CIRCLE (Gifts of \$5,000+)

Akron Community Foundation	Ohio Arts Council
City of Akron	OMNOVA Solutions Foundation
Margaret J. Dietz	Charles E. & Mabel M. Ritchie
The GAR Foundation	Memorial Foundation
The Goodyear Tire & Rubber Company	Sisler McFawn Foundation
The Lehner Family Foundation	Lloyd L. & Louise K. Smith
John A. McAlonan Fund	Memorial Foundation
Northeastern Ohio Education Association	WeatherVane Women's Board

### PLATINUM MEMBERS (Gifts of \$1,000+)

#### INDIVIDUALS

Fred & Francia Albrecht	Hubert E. Kirkland
Roger G. Berk Family & Creative Technology	Jo Ann Oelschlager
Ann & Dave Brennan	Thomas R. Trotter
Elynmarie Kazle & Mark A. Zimmerman	

#### CORPORATIONS & FOUNDATIONS

Glenn R. & Alice B. Boggess Memorial Foundation	C. Blake & Beatrice McDowell Foundation
Brennan Family Foundation	Michelson Foundation
Bridgestone/Firestone Trust	Laura R. & Lucian Q. Moffitt Foundation
Kenneth L. Calhoun Charitable Trust	The RC & Katherine Musson
Key Foundation	Charitable Foundation
Robert A. Kutz Charitable Trust	M. G. O'Neil Foundation
	☉ TARGET

### GOLD MEMBERS (Gifts of \$500 - \$999)

#### INDIVIDUALS

Drs. Michelle & Joseph Blanda	Olga & Michael Giustino	Mrs. C. Blake McDowell, Jr.
Eileen & Peter Burg	Jim & Janet Heilmeier	Elizabeth B. Sandwick
Marcia & Warren Deist	Dr. Jack & Libby Jacobs	Steven P. Schmidt, Ph.D.
John Grafton & Richard Worswick	Dr. & Mrs. Edward Koosed	Jean P. Stevens
Eileen & Ralph Greene	Richard & Leslie Lund	Mary & Mel Wolfman
	David & Orlene Makinson	Mona L. Wolfman

#### CORPORATIONS & FOUNDATIONS

A. Schulman	Fifth Third Bank	Roetzel & Andress
Akron Dispersions, Inc.	FirstMerit Bank	Summit County Internists, Inc.
Buckingham, Doolittle & Burroughs	GoJo Industries	Written Communications
	Myers Industries, Inc.	Radio Service



### SILVER MEMBERS (Gifts of \$250 - \$499)

#### INDIVIDUALS

Drs. Morton & Miriam Agins	Bud Graske	The Moushey Family
Mrs. Wm. S. Campbell, Jr.	Roy & Mary Hartz	George Moxon
Chic & Juanita Carlson	Jim & Charlotte Horvath	Patricia Obenour
Mildred Collis	Annetta Karam	Barbara B. O'Connor
Dr. Paul Daum	Mary Beth Kluge	John O'Neill
Mr. & Mrs. William L. Davis	Doug & Kathy Kohl	Judy & Roger Read
Dr. Richard & Mary Beth Ellison	Shelley & Tom Koutnik	Dr. Douglas & Jane Sanders
W. Scott & Sandra Emerick	Dr. Douglas & Karen Lefton	Doris & Clyde Shaw
Helen & Chisna Fleming	Mr. & Mrs. William Lowery	Connie & Bob Velotta
Barry Friedman	Sheila Motter	Mary Warhol & Dale Ruth

#### CORPORATIONS & FOUNDATIONS

Akron Tool & Die	Ernst & Young LLP	National City Bank
Alside Inc.	FW Albrecht Family Foundation	Spector & Saulino
Brockman, Coates, Gedelian Co.	Hottle & Associates	Steere Enterprises
Business Interiors	Jeter Systems	Welty Building Company
The Davcy Tree Expert Co.	Maynard Family Foundation	

### PATRON MEMBERS (Gifts of \$150 - \$249)

#### INDIVIDUALS

Lauri Agins	Dr. Lowell & Francine Gerson	Dr. George & Janet Nankervis
Mr. & Mrs. John R. Arther, III	Mary & Bill Glaeser	Tina & John Scanlon
Lisa & Chuck Ayers	Ginny & Jay Hershey	Thomas Stephan
Elizabeth Campbell	Dr. C. William & Ardith M. Keck	Atty. & Mrs. Leo Weill
Frank C. Comunale	Margaret & John McBride	Judge & Mrs. Harold White
Dr. & Mrs. Stephen A. Farkas	Mr. & Mrs. Richard D. Miller	Marta J. Williger
Jerilynn Ferguson	Doug Mory	

#### CORPORATIONS & FOUNDATIONS

Amer Insurance	Dayton Nurseries	N. Gogolick & Sons
Akron Automobile Club	Flexys America	North Akron Savings
Akron Publishing Company	GBC Design, Inc.	Peters, Tschantz & Bandwen
Arther Printing	Hitchcock Fleming & Assoc.	The Ruhlin Company
Charter One Bank	Kastner, Westman & Wilkins, LLC	Swenson's Drive-In Restaurants
ComDoc, Inc.	Mogen Real Estate	Yoder Brothers, Inc.
Consolidated Benefits		

### SUSTAINING MEMBERS (Gifts of \$100 - \$149)

#### INDIVIDUALS

Virginia Abell	Tatiana & Richard Harris	Betty & Bill Plant
Mr. & Mrs. Seymour H. Baron	Robert J. Hasman	Dr. Luis & Theresa Proenza
Mary & Rollie Bauer	Ellen & Karl Hay	Jean Questel
Doug & May Ann Bell	Marilyn Heagerty	Alan Rosenwasser
John & Maryanne Cotter	Kathryn M. Hunter	Lois & Paul Simmons
Jane & John DeYoung	Laura & Jeff Kerchner	Elinore Marsh Stormer
Paul & Ruth Eisenzimmer	Richard & Judy Kotick	Helena Sturkey
Suzy Elderkin	Amy Lee	Linda Waite
Mr. & Mrs. William R. Feth	Phyllis J. Lerch	Theresa Ellen Wegryn
Mr. & Mrs. Paul A. Frank, Jr.	Dr. Donald & Wendy MacKay	Bob & Shari Whitfield
Dave Freeman	Virginia D. Moline	B.J. Zeigler
Diana & John Gayer	Mary Ann Peters	Dan & June Zeno



**SUSTAINING MEMBERS (Gifts of \$100 - \$149)**  
**CORPORATIONS & FOUNDATIONS**

Admiral Machine	Barron & Benson, Inc.	McDonald Investments
Akrochem Corporation	Guys Restaurant & Party	Smithers Scientific
Alfred & Judy Nicely	Center	Services, Inc.
Annaco, Inc.	Holland Oil Company	Vereecken & Associates

**CONTRIBUTING MEMBERS (Gifts of \$50 - \$99)**  
**INDIVIDUALS**

Janine Barzyk Ackerman	Dr. & Mrs. Lawrence Kaye	Gloria T. Reich
Robert Antenucci	Dr. & Mrs. Raymond	Dr. & Mrs. John Saks
Barbara "Bunny" Ballance	Kimberly	Sam & Martha Salem
Carol Boyd	Dede Klein	Bertie & Milton Sass
Madeline & Libert Bozzelli	Jane & Edward Krimmer	Jay Sigler
Julie & Steven Brandle	Edna Kuhlman	Priscilla Smith
Curtis R. Brown	Sandra Leith	Richey & Sandra Roe Smith
Donne & Janet Clark	Martha E. Mazak	Margo Snider
Raleigh & Gloria Drennon	Margaret McDowell Lloyd	Jean & Ethel Soudry
Penny Frese	Frances McGovern	Barbara & Russell Stevic
Pat Galloway	Arlene McKinnon	Dr. & Mrs. Robert T. Stone
Beverly J. Garret	Lynn & Ed Metzger	Mr. & Mrs. David Taylor
Mrs. T.V. Gerlinger	Mr. & Mrs. Carl Osherow	Edith & Norbert Weisend
Ian S. Haberman	Drs. Irja & Alek Piirma	Linda Wertz &
Marty Jones	Dr. Joseph Rapotec	Robert E. Cunningham
Carla & John Kachmar	Joanne Sullivan Reed	Dr. Jeffrey Yatsu

**CORPORATIONS & FOUNDATIONS**

General Metals Powder Company      West Point Market

**SPECIAL MEMBERSHIP -- 100+-HOUR VOLUNTEERS**

Christine Schueneman

Weathervane Community Playhouse gratefully acknowledges  
**SBC, Merrill Lynch, The BF Goodrich Company, Key Foundation,**  
**The Goodyear Tire & Rubber Company and Illinois Tool Works Foundation**  
 for contributions made through their matching gifts programs.

Weathervane Community Playhouse gratefully acknowledges **The Sisler**  
**McFawn Foundation, Akron Community Foundation, Robert A. Kutz**  
**Charitable Trust, OMNOVA Solutions Foundation and Target Stores** for  
 contributions for Project STAGE presentations and Youth Outreach Programs.



Take a look at our poor old lobby.

It's so sad.

It definitely needs a facelift.

Won't you help us by putting your change or

those lovely dollar bills into the

"Hello Lobby" Fund box by the front door?

It'll start us on our way to a new lobby.

Thanks dahlings.



**WEATHERVANE COMMUNITY PLAYHOUSE**  
**Capital Campaign**

Tax-deductible contributions can be sent to: Capital Campaign,  
 Weathervane Community Playhouse, 1301 Weathervane Lane, Akron,  
 Ohio 44313. Or ask for a pledge card at the Box Office!



**A strong cast**  
makes all the difference.



Good luck to yours!

For information on how you can support Summa hospitals, please call 330-375-3159



*Weathervane Community Playhouse*  
68th Season – 2002-2003 – Production #499  
January 15 - February 9, 2003



by  
**Joseph Kesselring**

Sponsored by



Directed by  
**Lisa Plant Wittman**

Stage Managers  
**Nikki Rafferty**  
**Donna Philips**

Sound Designers  
**Lois Bennett**  
**Roger Zema**

Properties Designer  
**M.J. Coulson**

Costume Designer  
**Barbara Trotter**

Scenic Designer  
**Alan Scott Ferrall**

Lighting Designer  
**Vaughn G. Austin**

*Arsenic and Old Lace* is produced by special arrangement with  
Dramatists Play Service, Inc., 440 Park Avenue South, New York, N.Y. 10016.

Weathervane productions are sponsored in part by



Weathervane Community Playhouse, 1301 Weathervane Lane, Akron, OH 44313-5186  
Ticket Office: 330-836-2626 – Fax: 330-873-2150 – Email: wcpakron@aol.com  
[www.weathervaneplayhouse.com](http://www.weathervaneplayhouse.com)

Happy New Year!



We begin 2003 by welcoming back director Lisa Plant Wittman. Lisa was last with us for the delightful *Noises Off* and *Annie*. Her family's involvement with Weathervane spans a great deal of our history and we are pleased that her parents, Bill and Betty Plant, will celebrate their 80th birthdays with us during this production. Lisa now makes her home in Chicago, working as a professional director. We are fortunate to bring her back to work with our local actors, designers and technicians for the spooky and delightful *Arsenic and Old Lace*.

We are proud of our heritage. Nearly 70 years ago, four talented and dedicated women had a vision for providing live theatrical experiences for and with the members of our community. Our founding "mothers" envisioned a playhouse that would enrich our community with thought-provoking theater, stimulating workshops and a wide array of hands-on artistic opportunities for all. We honor this spirit with a 68th season that will ignite discussion, entertain us and keep our spirits in high gear.

Our 500th play -- *The Laramie Project* -- is the next play in our season of celebration. Please join our Trustees on the opening night, February 28th, for this very special milestone in Weathervane history.

By participating and working in the arts together, we can build a bridge to better understanding. We invite you to come to the theater and take part in the process. It can be a rewarding, mind expanding experience.

There is much to celebrate. Thank you for coming.  
Enjoy the show!

*Elmorie Kyle*  
Executive Director



### *Arsenic and Old Lace – Cast*

Abby Brewster	Karen L. Wood
Martha Brewster	Meg Hopp
Mortimer Brewster	Scott Shriner
Jonathan Brewster	Tom Hoover
Dr. Einstein	David P. Myers
Teddy Brewster	Barry Friedman
Elaine Harper	Emily M. Haase
Rev. Dr. Harper	Bill Brown
Lieut. Rooney	Jerry Dorton
Officer O'Hara	Vince Stillitano
Officer Klein	Alan Scott Ferrall
Mr. Gibbs/Mr. Witherspoon	Irv Korman
Mr. Hoskins/Mr. Spenalzo	Simon Siegel

Setting: The entire action of the play takes place in the living room of the Brewster home in Brooklyn, 1941.

Act I: An afternoon in September

Act II: Later that night

Act III: Scene 1: Still later that night

Scene 2: Early the next morning

*There will be two 15-minute intermissions.*

### *Director's Notes*

I dedicate my work on this production to my parents, Bill and Betty Plant, Kitty G. Brown and the other "old timers" of our playhouse. These "veterans" have given countless hours and all of their hearts to build Weathervane into the success it is today. Without their passion, the seats you're in would never have been purchased. And, without their mentoring, my name would never have been written as "Lisa Plant Wittman, Director." Thank you for the legacy you've given us.

**\*For your safety, we request that you remain seated until the house lights have come up at intermission and after the curtain call.**

**\*The use of cameras, recording equipment and laser pointers is forbidden during this performance.**

**\*As a courtesy to fellow audience members, please make sure that cell phones and pagers are turned off during the performance.**

**\*Please do not bring food or drink in the auditorium.**

**\*NOTE: In case of an emergency in which the performance cannot continue, Calamity Vouchers will be issued for a future performance. Thank you.**



### About the Play

Joseph Kesselring wrote a play in 1938 which he titled *Bodies in the Cellar*, finishing it in two weeks and five days. No producer wanted it. He finally sent it to Howard Lindsay and Russel Crouse where it lay under a pile of scripts on Lindsey's desk; the two were busy producing *Life with Father*, which ran for seven years after its introduction in 1939. Lindsay's wife, Dorothy Stickney, was waiting for him one evening and rifled through the scripts on his desk. She picked up *Bodies*, began to laugh, and insisted her husband and his partner take a good look. Lindsay and Crouse bought the producing rights and asked Kesselring to undertake some revisions. Lindsey and Crouse probably did some of the rewriting themselves, giving the play the bright comic aspects which were their style. *Arsenic and Old Lace* opened in New York on Jan. 10, 1941 with Boris Karloff himself in the role of Jonathan Brewster who is supposed to look like Boris Karloff. The comedy was an overwhelming triumph on its opening and ran for 1,444 performances. Abby and Martha Brewster, lovable but lethal old ladies, decide they can bring permanent peace and happiness to the old men who rent their furnished room by adding just a little arsenic to their wine. When their drama critic nephew unwittingly discovers his aunts' secret charity, the fuse is lit on a series of incidents and situations which have had audiences laughing for years. In 1955 a notable television version appeared on CBS starring Helen Hayes and Billie Burke as the helpful sisters, Boris Karloff in his original role, Peter Lorre as his assistant and Orson Bean as the drama critic, Mortimer.

### About the Playwright

Joseph Otto Kesselring (1902-1967) was born to a father who was a baritone singer and a mother who was a pianist and contralto. When the father reluctantly abandoned music for the greater remuneration he could gain in the wholesale perfume business, both parents turned their efforts toward helping their son achieve the kind of musical success which had eluded them. He was a boy soprano at the age of eleven, appeared several times with the internationally famous Mme. Schuman-Heink, sang in New York's most prestigious churches and attended music conservatories studying music theory, piano and voice. He turned to acting and appeared in the 1926 production of *Gentlemen Prefer Blondes*. His writing success with *Arsenic and Old Lace*, generally credited to Lindsey and Crouse, did not continue. He wrote seven other plays, none of them a hit. When Kesselring died, his will set up an annual \$10,000 prize for playwrights which is administered by the National Arts Club.

Memorial Contributions were made to the Weathervane Endowment Fund  
in honor of "Sy" Kaplan by...

The Moushey Family	Barbara B. O'Connor	Helen & Cue Fleming
Mary & Mel Wolfman	Margaret J. Dietz	

Memorial Contributions were made to the Weathervane Endowment Fund  
in honor of Barbara Kistler by...

Barbara B. O'Connor	Patricia S. Obenour	Margaret Valetta
Mary & Mel Wolfman	Margaret & Howard Palmer	Mrs. C. Blake McDowell Jr.
Dorothea Renninger	Helen & Cue Fleming	

### Our Director

Over the past two decades, Lisa Plant Wittman has developed two careers: one in the arts as director, actor and arts consultant, the other in corporate America where she specializes in change management, strategic planning and facilitation/training programs. She graduated from Syracuse University in New York with a B.F.A. degree in directing and acting, and a minor in business.

During her tenure as Artistic Director of the Mansfield (Ohio) Playhouse, she won Excellence in Directing Awards from the Ohio Community Theatre Alliance for her work on *A Walk in the Woods* and *The Boys Next Door*. She is proud of her role as an abused wife in a Telly award-winning video on domestic violence which is used to educate E.R. nurses and doctors on the issue. Lisa's last directing efforts at Weathervane include *Noises Off*, (which won a Chanticleer for Best Production) and *Annie*.

Lisa's parents, Bill and Betty Plant, were instrumental in moving Weathervane from the Copley Road theater to its present site. Their love of theater has been a big influence on Lisa.

Last October, Lisa married Tim Wittman, architectural and art historian teaching at the School of the Art Institute of Chicago, where they now live. Tim grew up in Medina and earned an undergraduate degree at Hiram College before attending the University of Chicago.

## Limited Edition Set

**WENDELL  
AUGUST**  
ESTD 1923

A Tradition of Craftsmanship

Flagship Location, Grove City, PA  
(724) 458-8360

Prime Outlets Grove City, PA  
(724) 748-4132

Holmes County, Berlin, OH  
(866) 354-5192 Toll-Free

(800) 923-4438 Catalog  
WendellAugust.com

10-Piece "Nutcracker"  
2003 Collector's Ornament Set  
& Nutcracker Figure  
Aluminum, Bronze, Pewter  
or Sterling Silver

For a unique shopping experience  
visit one of our stores!







## Callboard Cast Biographies

**KAREN L. WOOD** (Abby Brewster) was last seen on Weathervane's stage as Golde in *Fiddler on the Roof*. She has won Chanticleers for her performances in *She Loves Me*, *Cabaret* and *Oliver*. Among her favorite roles are Sister Robert Anne in *Nunsense* at Goodyear Theatre and Adelaide in *Guys and Dolls* at Weathervane. Karen is an intervention specialist for the North Central Local Schools in Wayne County. She holds Bachelors and Masters degrees in special education from Ohio University and was named Franklin Walter Outstanding Special Educator in 2001. She is married to actor Henry C. Bishop and raises cats.

**MEG HOPP** (Martha Brewster) knows this character well -- she played Martha for Brecksville Theatre on the Square in 1999. She most recently appeared on the Weathervane stage as Sylvie in *The Odd Couple, Female Version*. She enjoyed her First Night Akron experience in 2001 in Weathervane's patriotic musical review directed by John Fagan. She has appeared in many musical productions including her favorite role as Miss Hannigan in *Annie* for Brecksville Theatre in the Square. Meg has a BA degree from St. Norbert College, DePere, WI, and thanks her husband Steve for his patience and support and sends greetings to her children, Bridget, Libby and A.J. In her spare time, Meg has taken up golf. Her goal is eventually to shoot her age or break 100, whichever comes first.

**SCOTT SHRINER** (Mortimer Brewster) last appeared on Weathervane's stage as a Protean in *A Funny Thing Happened on the Way to the Forum*. His acting experience includes appearances for Aurora Community Theatre, Church Street Players, Tree City Players and Coach House Theatre where he received a Royal Coach Award for Best Supporting Actor in *Sunday in New York*. Scott is associate edi-

tor of the Record Publishing Company's weekly newspapers. He sends love to his wonderful fiancée, Kelly.

**TOM HOOVER** (Jonathan Brewster) is a writer/producer/director at AVID Communications. He is currently seeking funds for an independent film, prefers teaspoons for soup, can actually drive in snow and can sing *Flipper* in Spanish. He has been seen among the shelves at Blockbuster and on stage at Coach House, Goodyear, Magical Theatre Company and Weathervane where he last appeared in *The Miracle Worker*. He won a Regional Emmy for *Thunderbay* and a Best Supporting Actor award in 1988 from Coach House. His wife is Meghan, and he is a graduate of the School of Hard Knocks.

**DAVID P. MYERS** (Dr. Einstein) appears on Weathervane's stage for the first time. As a teacher at the Cuyahoga Valley Christian Academy, he has appeared there in *Fiddler on the Roof* and *Flowers for Algernon*. In 2002, he played Jim in *The Adventures of Huck Finn* for Antic Playhouse. He holds a BS degree in philosophy and computer science from Taylor University, Upland, IN and he coaches soccer for CVCA.

**BARRY FRIEDMAN** (Teddy Brewster) has been an active member of Weathervane for more than twelve years, both on stage and behind the curtain. He has appeared in numerous productions including *Crossing Delancey*, *Prelude to a Kiss*, *A Midsummer Night's Dream* and *Kiss Me, Kate*, for which he won a Chanticleer for best supporting actor. A former Board of Trustees member, Barry has been instrumental in supporting many Weathervane projects. He holds a liberal arts degree from Temple University and works as a diamond importer in Cleveland, *Figurez vous*.



## Callboard Continued

**EMILY M. HAASE** (Elaine Harper) is a 2002 graduate in advertising from Kent State University where she was a National Merit Scholar and a member of the Golden Key Honors Society. She is a copywriter for Craver Marcom, Inc. of Akron. She has played "all over" in *Mysteries by Moushey* and was last seen on Weathervane's stage as one of the Gemini in *A Funny Thing Happened on the Way to the Forum*. She appeared in 2002 as Lucy in *Dracula* at the Kent Stage.

**BILL BROWN** (Rev. Dr. Harper) has retired from the insurance business and is enjoying appearing on stage for Walsh University Players and North Canton Playhouse where he was last seen in *The Bad Seed*. This is Bill's first appearance at Weathervane. He is a graduate of Nebraska Wesleyan University, Lincoln NE, where he won many honors. His wife is Lynn; they have two daughters and four grandchildren.

**JERRY DORTON** (Lieut. Rooney) played Dr. Einstein in 1978 at Cuyahoga Falls High School. In 1997, he appeared in *Don't Dress for Dinner* for Stow Players. Now we welcome him to Weathervane. A 7th grade teacher in the Stow-Munroe Falls City Schools, he is a graduate of Crown College in Minnesota and has an MAT degree in Education from Kent State University. He and wife Alison have three children with whom he likes to play "frisbee golf" and have cookouts in the fireplace.

**VINCE STILLITANO** (Officer O'Hara) is also a newcomer to Weathervane. He says he is an aspiring actor who has appeared on stage at Canton Central Catholic High School as Jonathan in *Arsenic and Old Lace*, as well as other parts in other plays for Carnation City Players, The University of Akron, Canton

Players Guild, North Canton Playhouse, and Tree City Players. For the past year Vince has been a member of the comedy troupe, Rolling Doughnuts, and a part of the semi-controversial Mike and Ike reviews on the NEOhio PAL List.

**ALAN SCOTT FERRALL** (Officer Klein) began his Weathervane career in 1989 as a volunteer building sets and participating on running crews for props, lights and sound. He was on the Weathervane stage as stage manager during the original run of Eileen Moushey's *Wolf Tales*. He also proudly owns two Chanticleers for stage managing *Fences* and for lighting design with Donna Phillips for *A Man for All Seasons*. Scott is the Technical Director/Scenic Designer for Weathervane. He needs sleep--lots of it!

**IRV KORMAN** (Mr. Gibbs/Mr. Witherpoon) reports that he was one of two sophomores in his high school production of *Arsenic and Old Lace*; the other sophomore was John Lithgow. Since then, Irv has been busy as an associate lecturer in the School of Communication at The University of Akron. sHe writes entertainment stories for the monthly *Focus* and is play critic for *The Montrose Sun*. He is currently writing a book about the famous people he has interviewed over the past twenty-five years. This holiday season he played the General in the Children's Ballet Theatre production of *The Nutcracker* presented in Akron's renovated Civic Theatre. He was last seen on Weathervane's stage as the Rabbi in *Fiddler on the Roof*. He also appeared in *The Fantasticks* and *A Funny Thing Happened on the Way to the Forum*. Irv also appears as his own creation, the clown/magician Marlowe the Magic Clown. In 1973, he appeared at Carousel Dinner Theatre in *See How They Run* which starred Mickey Rooney.



## Callboard -- Backstage Biographies

**NIKKI RAFFERTY** (Stage Manager) won a Chanticleer Award for Best Production of the 2000-2001 Season for *A Funny Thing Happened on the Way to the Forum*. She has had a hand backstage in every mainstage production since *The Farndale Avenue...Christmas Carol*. She also has won Chanticleers for *The Odd Couple*, *Female Version* and *Camping with Henry and Tom*. She has directed youth productions at St. Thomas Orthodox Church in Fairlawn and works at the Akron Area Housing Authority.

**DONNA PHILIPS** (Stage Manager) just keeps on working backstage and has collected four Chanticleer Awards -- two for props (with M.J. Coulson), one for lighting (with Scott Ferrall) and one for sound (with Lois Bennett). She has chaired Chanticleer Awards events and the Playhouse auction committee. Donna is getting settled in her new home with her puppy, Mitzy, and is looking for a job.

**M.J. COULSON** (Properties Design) took an adult education class at Weathervane in 1990 and hasn't left. She served on the Women's Board then went backstage to help. Her "assistance" resulted in three Chanticleers for *Harvey*, *Little Shop of Horrors* and *Fiddler on the Roof*. She's a champion at props and has endless tales to tell of tragedies and successes. M.J. has two sons and two grandchildren, all in Florida. This is her eighth year for completing the Metro Parks' Hiking Spree.

**SIMON ANTHONY SIEGEL** (Assistant Props Designer/Mr. Hoskins/Mr. Spinalzo) most recently appeared on Weathervane's stage as Reuven Malter in *The Chosen*. He was Mr. Webb in *Our Town* and played in both our 2000 and 2001 productions of *Joseph...Dreamcoat*. A junior at Firestone High School, Simon is a professional juggler and hopes to pursue a theater career.

**BARBARA TROTTER** (Costume Designer) learned costuming while working with Natalie Walker for a variety of off-off-Broadway and traveling companies in New York in the 1980s. She is happy to be costuming again -- her first time for Weathervane. She has been busy working props and serving on the lighting crew for nine of our productions in the last two years. She is an instructor in the School of Communication at The University of Akron and wishes she could say she is writing her memoirs--but she isn't.

**VAUGHN G. AUSTIN** (Lighting Designer) joined Weathervane during the 1976-1977 season and began stage managing with *Same Time Next Year*. He has worked on fifty-two productions, winning three Chanticleers for best production and three for best sound design. His most recent contribution was lighting design for last season's *Wit*. Vaughn has a chemical engineering degree from Penn State and is a senior operating systems consultant for National City Bank.

**LOIS BENNETT** (Sound Designer) won two Chanticleers for sound design for the productions of *Camping with Henry and Tom* and *King of the Kosher Grocers*. She enjoys performing and was seen as Granny Northrup in *On Borrowed Time*. She appears occasionally in *Mysteries by Moushey*. She cherishes her good companion, Tigger, a gray tabby.

**ROGER L. ZEMA** (Sound Designer) has worked on the sound crew for three years, one play a year. He has a B.S. degree in biology from Kent State University and a Degree in Podiatric Medicine from the Ohio College of Podiatric Medicine. He serves as chairman of the Department of Podiatric Surgery at Cuyahoga Falls General Hospital.



## Production Team Members & Crews

**Alan Scott Ferrall -- Technical Director**

**Kathy Kohl -- Assistant Technical Director**

### SET CONSTRUCTION

Kevin Ford ✓ Danny Constantine ✓  
Ruth Richardson ✓ Lauri Agins ✓  
Erin Katz ✓ Tom Marshall ✓  
John Hujar ✓ Stephanie Kohl ✓

### LIGHTS

Patrick Simone ✓ Stephen Moushey ✓  
Henry Bishop ✓ Erin Dillon ✓  
Dave Heltebran ✓ Steve Lawson ✓  
Whitney Turner

### SOUND

Mary Kate Clancy ✓ Paul Witeczek ✓  
Stephen Moushey ✓ Tom Barnes ✓  
Del Santos

### COSTUMES

**Randie O. Sass** ✓ Janet Heilmeier ✓  
Linda Avers ✓ Ethel Soudry ✓  
Dorothy Kies ✓ Carol Richards ✓  
Henrietta Cook ✓ Cindy Smith ✓  
Liz Raines ✓ Darlene Schlemmer ✓  
Dottie Goldenberg ✓ Betty Watterson ✓

### PROPERTIES

Simon Siegel -- Assistant Designer

Liz Raines ✓ Nancy Zeigler ✓  
Marcia Deist ✓ John O'Neill ✓  
Jeff Bigler ✓ Patty Hetrick  
Michelle McCauley ✓ Thomas Clark

### ACKNOWLEDGMENTS

Bud & Linda Graske  
Scott Sexton  
Tom Marshall - Cuyahoga  
Valley Antiques  
Carol McGee  
Jim Horvath

Jack Herman  
Abby Ann's  
Stagecoach Antiques  
Mr. Fun's  
Robert Fertel  
Marie Martin Designs


Charles Korecki  
The Players Guild  
Melanie Pepe  
William Phillips

### Thanks to Our Volunteers

The following are the vivacious volunteers who assisted you by hostessing, house managing and staffing the boutique, office or Green Room during *The Wiz* and *Joseph...*

Mina & Puru Agrawal ✓	Jill Forster ✓	Sheila Mottet ✓	Cindy Steele ✓
Linda Avers ✓	Joyce & Tim Fortin ✓	Lois Murray ✓	Pam Stoffekt ✓
Nora Barner ✓	Ian Haberman ✓	Pat Obenour ✓	Sue Steiner ✓
Patrice Bechtol ✓	Sandra Harding ✓	Barbara O'Connor ✓	Barb Stevic ✓
Joyce Bigam ✓	Marilyn Heagerty ✓	Ernie Povirk ✓	Evelyn Stiggers ✓
Janet Budait ✓	Linda Heath ✓	Jean Questel ✓	Jacqui Sukie ✓
Alberta Carlin ✓	Diane Herman ✓	Liz Raines ✓	Barbara Trotter ✓
Juanita Carlson ✓	Terri & Scott Herman ✓	Joanne Reed ✓	<u>Helen Tschantz</u>
Lisa Caroniti ✓	Marian Houser ✓	Lori Reilly ✓	<u>Melinda Turner</u>
Cheryl Carter ✓	Frances Howell ✓	Ruth Richardson ✓	Lynn Vanca ✓
Debbie Civerella ✓	Michelle Hujar ✓	<u>Mike &amp; Kim Sandridge</u>	Connie Velotta ✓
Henrietta Cook ✓	Kim Jameyson ✓	Leah Sass ✓	Linda Waite ✓
Wendy Cooley ✓	Deb Kabacinski ✓	Randie Sass ✓	Betty Watterson ✓
M.J. Coulson ✓	Barb Kistler ✓	Marla Scarpitti ✓	Pat Weill ✓
Eileen Creevy ✓	Jane Krimmer ✓	<u>Leslie Schafer</u>	Betty Williams ✓
Eileen Crist ✓	Cynthia Krummel ✓	Elana Schprechen ✓	Marta Williger ✓
Margaret Dietz ✓	Fran Lasser ✓	Debra Sharp ✓	Mary Wolfman ✓
Bev Dubin ✓	Diane LeMaster ✓	<u>Lisa Slideboham</u>	Desserie Woodall ✓
Sally Duddey ✓	Leslie & Richard Lund ✓	Lois Simmons ✓	Gen Woods ✓
<u>Joanna Farragher</u>	Claudena Miller ✓	Suzanne Smith ✓	Richard Worswick ✓
<u>Jasman Fisher</u>	Penny Miller ✓	Ethel Soudry ✓	<u>Jan Ann Yoo</u>
Kirsten Fitzgerald ✓	Amanda Montigney ✓	Susan Speers ✓	Nancy Zeigler ✓
Cue & Helen Fleming ✓	Sharon Morgan ✓	Joann Starrett ✓	

Next On Our Schedule



# The Laramie Project

February 26-March 16, 2003

Drama by

Moises Kaufman & The Members  
of the Tectonic Theater Project.

In November 1998, four weeks after the murder of Matthew Shephard, Moises Kaufman and nine members of Tectonic Theater Project traveled to Laramie, Wyoming to collect interviews in an effort to understand the death of the gay student who was beaten and bound to a fence post outside town. This play is the result of those interviews.

Memorial Contributions were made to the Weathervane Endowment Fund  
in honor of **Kitty G. Brown** by...

Francia & Fred Albrecht    Frank Peterson Family    Scott Brown

## In the Bank One Visual Arts Gallery

*Old lace from the Hower House collection!* Thanks to Sylvia Johnson, executive director, Weathervane is privileged to display for the very first time outside the House a part of the collection amassed by the family of one of our founders, Grace Hower Crawford, and probably by Grace herself. These treasured laces have been framed by our own Marci Paolucci in order to display them appropriately. Other laces are provided by members of the Buckeye Bobbins, charter chapter of International Old Lacers, Inc., a volunteer non-profit organization of people who share an interest in the beauty and intrigue of old lace (the name of the organization refers to the age of the lace, not to the people making it). The members seek to preserve and perpetuate the making of all types of laces based on the old patterns saved and passed down from previous generations. Ginni Berringer, president of Buckeye Bobbins, is a dedicated lacemaker who has been involved with the Victorian Fairs at Hower House. She is providing two pieces. Kathleen Skeels, another member, has loaned three and Chris Chimera, one.

## Firestone Theatre

2002-2003 Season

Irving Berlin's

# Annie Get Your Gun

music, and lyrics by Irving Berlin  
book by Herbert and Dorothy Fields  
adapted by Peter Stone

directed by Mark A. Zimmerman  
original choreography by Michele Valdez

February 27, 28, & March 1, 2003  
7:30 p.m.

## Firestone High School

333 Rampart Avenue, Akron  
(330) 873-3408



## Future Events

February, 15 & 16

**God's Trombones**, Adapted from the  
book by James Weldon Johnson  
Director -- Reva Golden

Saturday, February 15

### Annual Reverse Raffle

St. George Fellowship Center  
Tickets \$100 (Includes 2 dinners)

### Auditions...

**The Complete Works of William Shakespeare (Abridged)**

Mon. & Tues., Feb. 17 & 18

by appointment

Call 330-836-2626

Director -- John Fagan



March 15-30, 2003

Following many successful productions, Weathervane's Youth Theater presents *Hamlet*, one of Shakespeare's most challenging plays. Ever since the play was written 400 years ago, the greatest actors have sought to play this man. Weathervane's young people will not let the playwright down.



## Community Cash Back Program

Weathervane is signed up to be a recipient of the Acme **Cash Back** Program. Bring in your Acme register tapes (as often as possible) to **John Cotter** at Weathervane and we'll receive a 1% return on them until May 19, 2003. (We turn them in periodically so there's no need to hold on to them for long.)

# YARTS™

We build strong kids, strong families, strong communities.

The Akron Area YMCA believes in building strong kids, strong families and strong communities. We salute the efforts of the Weathervane Playhouse to involve youth and families in the performing arts.





Capturing  
-the-  
**American  
Spirit**  
*A Journey Through Music*

SUMMIT CHORAL SOCIETY PRESENTS  
*2002-2003 Concert Season*

**SUMMIT  
CHORAL  
SOCIETY**  
since 1928

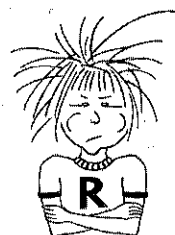
**Great American Hymns of Faith**  
Friday, October 25, 2002  
ST. BERNARD CHURCH • 7:30 PM

**An American Requiem**  
Saturday, March 29, 2003  
ST. BERNARD CHURCH • 7:30 PM

**Christmas Candlelight Concerts**  
December 20, 21, 22, 2002  
ST. BERNARD CHURCH • 7:30 PM

**An Ohio Bicentennial Celebration**  
Saturday, June 21, 2003  
E.J. THOMAS PERFORMING ARTS HALL • 8:00 PM

FOR ADDITIONAL INFORMATION CALL 330/434-SING (7464)



**Ramona Quimby**  
Oct. 16 - 27, 2002



Nov. 29 -  
Dec. 15, 2002

**MAGICAL  
THEATRE COMPANY**  
**30**

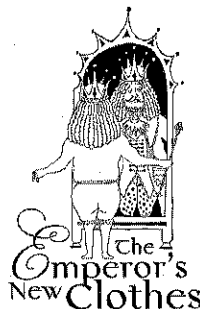
Celebrating 30 Years of  
Professional Theatre for  
Young Audiences & Families

10th Season of Artistic Direction under  
Holly Barkdoll & Dennis O'Connell

**330/848-3708**  
565 W. Tuscarawas Ave. • Barberton



Jan. 31 -  
Feb. 2, 2003



May 9 - 18, 2003

Make sure your children experience Theatre with the pros - the only professional  
resident theatre for young audiences in Northeast Ohio.



**Tuesday Musical**  
*presents...*

Tues., Oct. 15, 2002 - 8 p.m.  
**Venice Baroque Orchestra**

Wed., Dec. 4, 2002 - 8 p.m.  
**Dmitri Hvorostovsky,**  
**baritone**

Sat., Feb. 1, 2003 - 8 p.m.  
**River City Brass Band**  
at Akron's **CIVIC**

Tues., Feb. 18, 2003 - 8 p.m.  
**Joshua Bell, violin**

Sun., Mar. 9, 2003 - 3 p.m.  
**The Cleveland Orchestra**

Tues., Apr. 1, 2003 - 8 p.m.  
**Takács Quartet & Muzsikás**

Tues., May 6, 2003 - 8 p.m.  
**Stephen Hough, piano**

**2002-2003  
Concert Season**

**More  
than  
Expected**  
what you

All concerts, except where noted, are  
at The University of Akron, E.J.  
Thomas Hall. For more information  
on tickets, please call the Tuesday  
Musical office at: **330-972-2342**

[www.tuesdaysmusical.org](http://www.tuesdaysmusical.org)



**Coach House Theatre**  
*Akron's 1st Theatre*  
Celebrating 75 years of great theatre  
with our best season yet!

**The Cocktail Hour**  
by A.R. Gurney  
September 12 - 28, 2002

**Educating Rita**  
by Willy Russell  
November 7 - 23, 2002

**Play It Again, Sam**  
by Woody Allen  
February 13 - March 1, 2003

**Collected Stories**  
by Donald Margulies  
April 10 - 26, 2003

**the odd couple**  
by Neil Simon  
June 5 - 28, 2003

**A Christmas Carol**  
by Charles Dickens  
December 13 - 22, 2002  
*Special holiday event  
not included in subscription series*

*We have an exciting season  
to share with you.  
So join us at Coach House as we  
celebrate our 75th Anniversary--  
you're not just invited to the party,  
you'll be the guest of honor!*

**Jim Fippin**  
Resident Director



*Proud supporters of  
Weathervane Playhouse*

*Fine Italian Dining  
Just a short walk away  
in Liberty Commons*

1244 Weathervane Lane  
Akron, OH 44313  
**330-836-6088**



lunch  
dinner  
gift baskets  
catering

One West Exchange Street  
Downtown Akron  
**330-253-0340**

*Weathervane Playhouse Staff*

**Elynmarie Kazle**  
Executive Director

**Keith D. Campbell**  
Supervisor, Front-of-House  
& Patron Relations

**Alan Scott Ferrall**  
Scenic Designer/Technical Director

**Janis L. Harcar**  
Director of Marketing & Development

**Sean McConaha**  
Dir. of Education/Producer Youth Prod.

**John A. Cotter**  
Business & Public Relations Assistant

**Kathy Kohl**  
Assistant Technical Director

**Pat Biddle**  
Bookkeeper

**Dreajean L. Brown**  
Data Services Manager



**Weathervane  
Community  
Playhouse**

is a proud member of



**Ohio  
Community  
Theatre  
Association**

Akron-Canton's  
only  
television  
newscast  
is here!

**Watch Your  
Newscast  
Weeknights  
at 6:30**

Proud sponsor of  
Weathervane  
Community Playhouse

**PAX23  
news**



ERIC MANSFIELD  
anchors Akron-Canton news

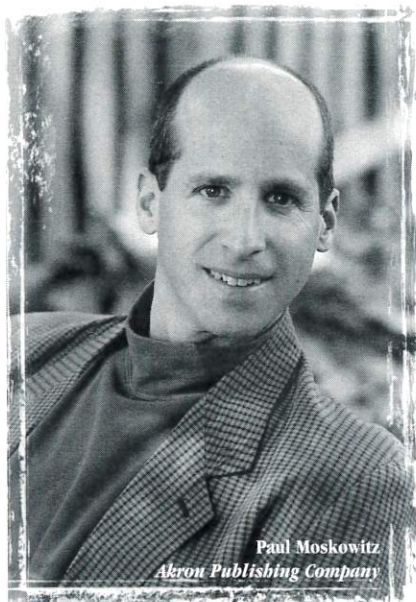


MARK NOLAN  
forecasts Akron-Canton weather



JIM DONOVAN  
covers Akron-Canton sports

# Why is this man smiling?



*Because his customers are too.*

If you haven't been smiling lately, please call Akron Publishing Company for your next custom publishing project. We will produce brochures, magazines, catalogs, directories and more... all of them from concept to completion. Akron Publishing Company will be the only call you'll need to make.

**AKRON**  
PUBLISHING COMPANY

phone: 330.929.2703 ▲ fax: 330.923.0856  
e-mail: akronpublishing@neo.rr.com

*We do really good work, so that you'll look really good.*



## *Weathervane Hours*

Weathervane Business Office hours are from 10 a.m. to 5:30 p.m. Tuesday through Friday. To place ticket orders call the **Ticket Office** at **330-836-2626**. The ticket office hours are Tuesday through Friday from 10 a.m. to 5:30 p.m. During performances, the Ticket Office opens one hour before each performance and remains open through the first intermission only. On performance Saturdays only, the Ticket Office is open from 11:30 a.m. to 5:30 p.m. Ticket hours on performance Sundays begin at 1:30 p.m. Reservations may be made in person or by telephone with a credit card number.

Of course, rehearsals, set construction, classes and performance times often mean that staff and volunteers are likely to be available at other times than the hours noted during the week. For information, please call 330-836-2626. You may leave a voice mail message for a staff member, but we do not accept recorded ticket reservations. For any Ticket Office-related business, please call during Ticket Office hours.

## *Akron Area Arts Alliance*

Weathervane Community Playhouse is a member of the **Akron Area Arts Alliance**. Its mission statement is "to utilize its collective resources to

- 1) foster communication and coordination among area cultural groups
- 2) generate greater awareness and participation in the arts and humanities in all segments of the community
- 3) promote the value of the arts and humanities to local governments and advocate its financial investment in the community's cultural activities."

## *Season Coupons*

Seats for Weathervane's most popular shows, especially those late in the season, often sell out fast. Saturday night seating is frequently difficult to obtain, so it's smart to call for reservations early. *Please remember that coupons don't guarantee your seats. You must call for reservations.* Check the production schedule in your Super Coupon book and plan to use as many coupons as you wish for the shows you plan to see. We hope you'll use your convenient coupons frequently and won't find yourself missing out on sold-out shows or ending the season with unused coupons. Performances and schedules are subject to change so, for the most up-to-date information, call our ticket office at 330-836-2626.

Remember, you can always buy a new Super Coupon book at the Ticket Office any time you want to treat yourself and several friends to a Weathervane show. Books of eight coupons provide a modest savings over regular admission prices.

## *Mission Statement Weathervane Community Playhouse*

The mission of the Weathervane Community Playhouse is to entertain, inform and educate, thereby enriching the cultural life of the Greater Akron area. Weathervane shall provide area residents the opportunities both to attend and to participate in quality presentations of a cross-section of the finest theatrical works available. Weathervane shall provide education in the theater arts to adults and children. In meeting these goals, Weathervane shall be mindful of the standards of its audiences and shall maintain fiscally sound management.





## Before You Throw It Out, Ask Us

Weathervane can often make good use of used furniture and household items so please think of us when you're redecorating, cleaning or moving. Small rugs, carpet remnants, draperies or curtains are also appreciated.

Our wardrobe department also appreciates donations of clothing, shoes, women's purses, hats and jewelry, as well as usable patterns and lengths of fabric.

Please call before bringing donations to the

theater so we can tell you what may be needed most by our property or wardrobe department.

If we can't make use of your much-appreciated gifts, they may be passed on to another charity. We also, every so often, hold a rummage sale to clear our storage areas of items that we find we haven't been able to use. Your donations are appreciated and you may even see a favorite piece on stage some day.

## We're not the same old Song & Dance at



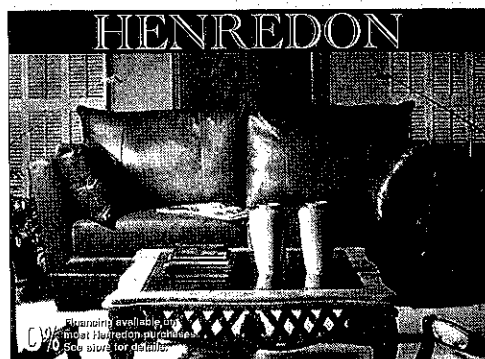
**Stinaff's**  
DATA FORMS & SYSTEMS SINCE 1936

44 S. Summit St. • Akron, OH 44308  
330-434-2106 • Fax 330-434-9376

LASER/COMPUTER FORMS & SUPPLIES • FULL COLOR PRINTING • FORMS MANAGEMENT



The Best Place For Fine Furniture in Greater Akron is at Wayside



- Over 200,000 sq. ft. of inventory.
- Providing friendly, responsive service for over 65 years.
- Professional interior designers on staff.
- We buy and sell for less ... every day.

Fine pieces from these quality manufacturers on display:

Thomasville • Pennsylvania House  
Stanley • Lexington • Nautica  
Lane • Smith Brothers • Flexsteel  
Bob Timberlake • Cochrane  
Thomas Kinkade • Broyhill • Clayton Marcus  
Canadel • Howard Miller • Hooker  
Sumter • Crescent • Dozens More

Visit our newly-opened 10,000 square-foot addition!

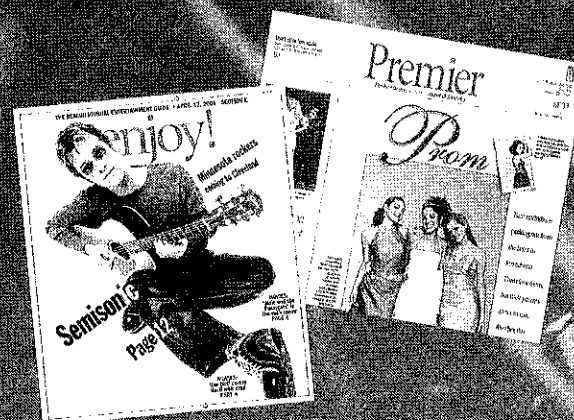
**Wayside**  
furniture

"Where You'll Find Better Furniture Priced Lower"

1367 Canton Road Akron On Route 91,  
just 1/4 mile south of Route 224  
Shop Daily 10 to 9, Saturday 10 to 6, Sunday 1 to 6  
Visit our website: [www.wayside-furniture.com](http://www.wayside-furniture.com)

(330) 733-6221

## Enjoy Our Premier Performance



**AKRON BEACON JOURNAL**  
There's something in it for you.



## *We're Proud Of Weathervane Volunteers*

Weathervane began as a volunteer organization and continues its growth thanks to the time and talent members of our community continue to invest in it. Our on-stage performers have worked long and hard to earn your applause. But their work is supported by many other unseen men and women who've helped build and paint sets, run the lights and sound, make sure that properties and set dressing items are in their proper places and do other backstage labor from stage managing to costuming and make-up. Supporting those who are actively involved in putting on each show are still more volunteers who usher, house manage, sell tickets, keep our office running and serve on our Board of Trustees, Board committees and Women's Board.

Their spirit is the backbone of our continuing operations, a valued support on which our professional staff relies.

Each month, we acknowledge the outstanding Volunteers of the Month in our lobby, but those volunteers represent all who commit their time and interest to create a great theater experience for everyone who's come to see this show.

If you have friends or relatives who volunteer generously at Weathervane, we hope you'll take a moment to thank them for their help and their support of the cultural enrichment of our community. Better yet, join them! Call us and we'll help you win your own share of the applause for a "jolly good show," an experience that offers unique challenges with every performance.

## *Share the Annual Chanticleer Celebration*

Shortly after the final production of each season, Weathervane volunteers and friends share an exciting party to acknowledge outstanding performances by performers and technical volunteers. The top performers are awarded rooster statuettes—Chanticleers—in recognition of their work, as voted by Chanticleer "judges" who have seen all productions during the season. It's a great night to get together, share hopes, fun and festivities and is open to all.

If you'd like to take an additional part in Chanticleer night and serve as a juror to vote for the award winners, all that is required is your affidavit that you have seen all seven shows during the season, and your choices for outstanding lead

performances by a male or female in a drama or comedy, outstanding support performances, and outstanding lead and support in a musical as well as choices in technical achievement. Chanticleers are also awarded for Properties, Lights, Costumes and Sound Design, plus Best Production of the season. In addition to performance and production awards, the event also recognizes outstanding volunteers of the year.

Chanticleer ballots are available during the run of the season's final show in July or August each year. We welcome regular theater-goers who'd like to take part in the jurying and join us for the biggest nail-biting party of the year. For information, please call our office.



## *Put On Your Own Show*

Let our space be your space for company sales meetings or seminars. Club or organization meetings, even weddings, can often be conveniently staged at Weathervane! Tell us what you may require and we'll help you with arrangements at reasonable rental rates when productions or construction are not going on at the theater. Our kitchen facilities and technical equipment may help you set up a very important gathering. For information, call (330)836-2323.

## *Organization Benefit Opportunities*

A benefit night or matinee at Weathervane can add funds to your club or organization treasury and could be an exciting annual event. Check the schedule of this season's productions. Perhaps one of the shows will dovetail with the aims and purpose of your group.

Discounted tickets for groups of 15 or more may be sold at a profit or passed along to your members. To create a dramatic fund-raiser or special celebration, you may also plan for catered refreshments. Your fund-raising chairman can get further details on a benefit night at Weathervane by calling Front-of-House Coordinator, Keith Campbell.

## *Boutique Treasures*

Our lobby Gift Boutique is a fund-raising project of Weathervane Women's Board. Shop from one hour before curtain time or during intermission to find exciting jewelry, watches, bibelots, music boxes, and other unique items and objects for yourself or for gifts. Every purchase helps make good

things happen at Weathervane. Prices are extremely reasonable and the items on sale include a delightful variety from clowns and animal figures to pens, pins and earrings. Our Boutique volunteers will also assist you with information on gallery art works which are for sale.

## *Gift Certificates — Always Available*

Whatever the occasion, a Weathervane Gift Certificate will fit! Please friends or family members with a night (or nights) of live theater. Weathervane Gift Certificates may be issued in any amount you choose. All the recipient needs to do is to call for reservations to the preferred perform-

ance. We'll do the rest with a memorable production during our season. Just ask for a Gift Certificate at the Ticket Office. You may pay with check or charge card to give a Weathervane gift you know your friends or family will applaud.



Come in and  
try our delicious  
Mexican food.

**El-Canelo II**



1730 Merriman Road  
(330) 865-9537

**15% Off Your Total Bill**

El-Canelo II • Not valid with any other offer.

Expires July 31, 2003



The Weekend College

*Weekend College*

- Five enrollment opportunities throughout the year
- Classes meet EVERY OTHER weekend
- Eight majors to choose from

Call (330) 569-5161 or visit our  
website at [www.hiram.edu/wc](http://www.hiram.edu/wc)

The Weekend College at  
**Hiram College**

# Researching your future?

## EXPLORE WESTERN RESERVE ACADEMY

- Ninth oldest boarding school for grades 9 - 12
- Exceptional Faculty
- Small Classes
- Beautiful Campus
- Coed with students from 22 states and 16 countries

Featured in  
*U.S. News & World Report*



**WESTERN RESERVE  
ACADEMY**  
115 College Street, Hudson,  
Ohio 44236 • 330.650.9717  
[www.wra.net](http://www.wra.net)



**An essential resource  
for the arts.**



**Akron-Summit County  
Public Library**

[www.ascpl.lib.oh.us](http://www.ascpl.lib.oh.us)



*Weathervane Playhouse  
thanks  
Tiffany Bakery  
for the beautiful opening  
night cakes.*

**Tiffany's Bakery**  
Elegant Selections



**Wedding Cakes**

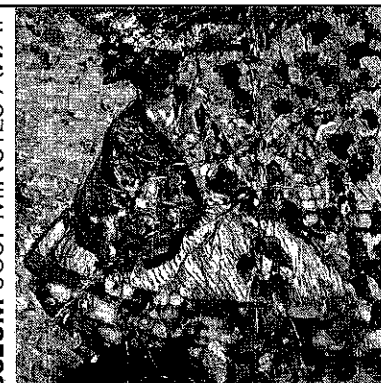
330-753-0017  
2176 Romig Road  
Akron, OH 44320

  
**STEINWAY & SONS**

*The World's Finest Piano*

Steinway Hall - Akron  
715 East Buchtel Avenue • Akron, OH 44305 • 1-800-356-0437 • 330-535-6070

**A WORLD-CLASS MUSEUM JUST MINUTES AWAY**



### 2002-2003 EXHIBITIONS

**My Reality: Contemporary Art and the  
Culture of Japanese Animation**  
Sept. 21, 2002 - Jan. 5, 2003

**Rodin: Selections from the Iris and  
B. Gerald Cantor Collection**  
Jan. 25 - May 18, 2003

**FREE ADMISSION  
OPEN EVERYDAY**

**Akron  
Art  
Museum**

Frederick C. Friesske,  
Through the Vines, around  
1908, oil on canvas

70 East Market Street, Akron, Ohio 44308-2094  
330.376.9186 [www.akronartmuseum.org](http://www.akronartmuseum.org)





## *Weatherwane Traditions*

**Meet the cast.** It's a Weatherwane tradition that, after most shows, many of the cast members may spend a few minutes in the lobby area to meet and greet friends from the audience. It's your chance to thank them for their performance.

**Intermission Tea** is served with our compliments by our volunteer hosts and hostesses. Please enjoy a cup with us. Soft drinks are available at a nominal cost.

**Opening Night Receptions** welcome our audiences on the first Friday night of each production. We'll provide light snacks and refreshments after the show so you can share that "first-nighter" feeling.

**For your sweet tooth,** snacks are available for purchase before the show and during intermission. Refreshments are not permitted in the auditorium.

## *Beware of the Dreaded No-Show*

Have you ever seen empty seats at a sold out sporting event or concert? Weatherwane has the same problem. Single-ticket buyers and subscribers who may have exchanged from another performance wonder why they weren't given those prime empty seats for the evening.

When you buy a subscription, you are *promising* to come to the theater for that ticketed performance and we hold your seat(s). These subscription seats are held until intermission. This, additionally, makes it impossible to tell if a performance is ever really *sold out* and annoys ticket buyers who see that they could have been seated in a better spot.

Subscribers: Please call the Ticket Office at 836-2626 if you will not make your ticketed performance. Thanks.

## **Money-saving super Super Coupon Books**

*Help You Save!*

**coupon books** are available all season. Booklets contain eight coupons and serve as pre-paid admissions for mainstage series productions. Use them one-at-a-time or all at once!



*Where Theater Comes Alive!*

## *Membership Helps Us Grow*

Individuals and businesses who believe strongly in the value of community theater to enrich the area are always welcomed as new or renewing members of Weatherwane Community Playhouse. For those whose names are listed in the program, there are many benefits, not the least of which is the pride you can share in supporting the mission of live theater's education and entertainment values.

Your support and commitment are welcome and appreciated any time and is needed now more than ever. For those who are already members, we suggest that an increase in your membership may be an idea whose time has come in the face of dwindling government resources.

If you truly enjoy live theater, you'll be playing a vital part every time the lights go up for each show on the Weatherwane stage and we can honestly say that the show couldn't go on without you.



## *Who Gets On Stage at Weatherwane?*

The performers you see on the Weatherwane stage come from throughout the greater Akron and surrounding areas. They're volunteers, just like the many men and women who supply backstage talent to make sure the show goes on performance after performance. They've committed themselves to four to six weeks of rehearsals plus performances, and their greatest reward is your applause.

Many performers come to our shows with substantial theatrical experience. Others may be new to the stage. Frequently we find that talented newcomers to our area find that Weatherwane is a great way to make new friends especially if they've been involved with community productions in their former home town.

Auditions are open to all and our non-traditional casting policy opens the way for performance opportunities for ethnic minority actors and others who may be physically or mentally challenged. Except in cases where race, gender, age or disability is essential to the play, all roles are cast on the basis of talent and sincerity of purpose.

To find out how you can get on stage, check the newspaper for audition dates and times or call Weatherwane at 330-836-2626 if you are interested in auditioning for a role in one of our upcoming productions or in a Youth

Theater production. We'll tell you about requirements.

Weatherwane shows are never "pre-cast." When you've been in a show or auditioned, your name will be included in our file so we can send you future audition notices. Some guest directors prefer to set appointments for audition times and may ask that you come prepared with a brief monologue, improvisational subject or musical number. Copies of plays scheduled or audition scenes are often available for a nominal deposit.

When you arrive at the theater on audition nights, you'll learn about the rehearsal and performance schedule ahead. You may also register as a production volunteer if you're interested in learning about the technical opportunities in the show.

You may be asked to return for callbacks and will be notified of the director's cast selection as soon as possible. Please note that if you don't win the role you've wanted so badly, it may not necessarily reflect on your talent. The director's choice of cast members must take many factors into account to develop the proper "relationships," style and reality of the ensemble. Don't be discouraged. Come try again. The next show may suit you even better!



# Meetings, or Banquets Holiday Parties

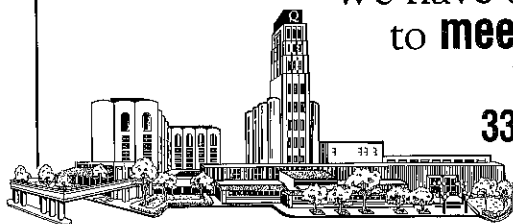


10...100... 500... 1000... 1500... people

We have the party rooms  
to **meet** your needs

Contact Us...

**330.253.5970**



Crowne Plaza® Quaker Square ♦ Downtown Akron, Ohio 44308  
Call 330.253.5970 or visit us on the web [www.quakersquare.com](http://www.quakersquare.com)



## Flooring to applaud.

See a thousand exciting options, including  
luxurious Anso Nylon® carpeting, at  
Northern Ohio's largest flooring showrooms.



1531 Commerce Drive, Stow, OH 44224 T: 330-688-0114  
5732 Dressler Road NW, North Canton, OH 44720 T: 330-494-4726  
[www.wccv.com](http://www.wccv.com) Store hours: M & Th, 10-8; T, W, F, S, 10-6

## DON'T COME TO MALONE

because of our passion for Christianity in the arts.



## COME BECAUSE OF YOURS.

You love Jesus. You love the arts. You know that your passion for the arts can be used to reach others for Christ. So do we. For example, wait until you see Malone's program in Commercial Music Technology. You'll study under professional musicians like Mark Townsend (pictured above), former guitar player for deTalk! Get ready to be challenged in a whole new way. Experience what true success is in your spiritual walk, academic career, and life.

Get to know us at [www.malone.edu](http://www.malone.edu)  
or call **1.800.521.1146**







## *I Want to Know More About Opportunities for Involvement at Weathervane*

Complete and detach this form and return it to the Ticket Office or mail to:  
Volunteer Opportunities, 1301 Weathervane Lane, Akron, OH 44313-5186

NAME \_\_\_\_\_

ADDRESS \_\_\_\_\_

CITY \_\_\_\_\_ ZIP \_\_\_\_\_ PHONE \_\_\_\_\_

*I am interested in the following areas: (Check as many as you wish)*

_____ Acting	_____ Costuming	_____ Box Office
_____ Set Building	_____ Orchestra	_____ House Managing
_____ Painting	_____ Sound	_____ Play Reading/Selection
_____ Usher	_____ Lighting	_____ Board Membership
_____ Backstage Crew	_____ Classes	
	_____ Fund Raising	
_____ Other _____		

\_\_\_\_\_ Best time to reach me at the above phone number \_\_\_\_\_

\_\_\_\_\_ I am a subscriber. \_\_\_\_\_ I am a donor.

### **I HAVE AN OPINION...**

About tonight's play \_\_\_\_\_

\_\_\_\_\_

About the current season \_\_\_\_\_

\_\_\_\_\_

About future seasons \_\_\_\_\_

\_\_\_\_\_

I have a fund-raising idea. \_\_\_\_\_

\_\_\_\_\_

*We appreciate, and often respond to, opinions offered about our work. Be sure to fill in your name and address above if you wish a response or would like to be contacted.*



## *What Can You Do as a Weathervane Volunteer*

Here's a quick introduction to the responsibilities volunteers undertake to make our shows work night after night. If you'd like to try your hand at any of these jobs, please call our Production and Volunteer Coordinator, Maryanne Cotter, at 330-836-2323. Volunteers with 100 hours or more of service are eligible for a special Weathervane membership!

★ **Stage Management** - Duties include assisting the director throughout the rehearsal period, calling cues, keeping backstage safe and orderly, and coordinating the technical needs of the show with the actors. A fulfilling responsibility for those who enjoy planning, communicating and taking charge. Once the director's work is done, it's the Stage Manager who runs each performance.

★ **Set Construction** - Use your building skills, carpentry or painting techniques to help make illusion come to life. We appreciate all the help we can find to design and build sets, move them and tear them down after a show to make new ones.

★ **Costumes** - Designers and workers are vital. We need skilled and even unskilled seamstresses to make or alter costumes, create patterns, care for costumes during a show and keep our wardrobe department organized. Add your design ideas or learn from other hard-working volunteers.

★ **Lighting** - Experience is a plus, but you can learn by assisting others who know computers and electrical requirements. We'll train eager volunteers to help hang, focus, and add color to lighting instruments. We'll also teach you how to run the light board and follow spots. You'll take pride in knowing that nobody can see the show without you.

★ **Sound** - Create the music and sound effects tapes that enrich the aural environment for each show or add "live" backstage sound. Run the sound system

for technical rehearsals and productions. We'll help you learn.

★ **Properties** - All the items that help "dress" a set and all those used by actors in rehearsal and performance (from tea sandwiches to "deadly" weapons and "shattering" windowpanes) must be borrowed, built or cooked. We need many volunteers to work on each performance. If you are clever at building things or have friends with "neat stuff" they'll loan, volunteer here.

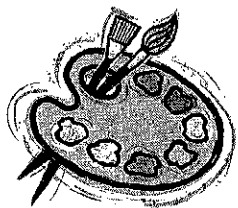
★ **Box Office** - If you enjoy dealing with the public, we can use your help during office hours and on show nights to assist in taking money and answering the phone to take reservations.

★ **Ushering** - Welcome audience members with your smile, showing them to their seats, passing out programs, and serving refreshments at intermission. Your help is always welcome.

★ **House Manager** - The theater's unofficial representative greets the audience, tears tickets and guides theater-goers to ushers for seating. You'll work with the stage manager to coordinate the timing of intermissions and remain in the lobby throughout the show to handle any emergency.

★ **Office Volunteer** - Put a few morning or afternoon hours to good use answering phones, taking reservations, helping with mailings, working with staff, and greeting customers and visitors. Many friendly people are needed to help.





Given the fact that we're  
in finance, we've always  
been partial to Monet.

Bank One is proud to support the arts.  
And not just the impressionists.



[www.bankone.com](http://www.bankone.com)  
50 S. Main - Akron

Member FDIC.  
©2002 Bank One Corporation.



The arts  
start here.

Art starts with inspiration.  
Inspiration starts with new experiences.  
New experiences are our business.  
That's the Akron Advantage.

[www.uakron.edu](http://www.uakron.edu)



*"At The University of Akron, we have set the stage for world-class excellence in the arts. By developing new generations of artists, partnering with arts organizations, and providing local venues for internationally-acclaimed theatrical and musical productions, we continue to help define the social and cultural landscape of Northern Ohio."*

- Luis M. Proenza  
President, The University of Akron

The University of Akron is an Equal Education and Employment Institution

The  
University  
of Akron