



Weather vane  
— PLAYHOUSE —

## IMPACT

---

**6**

PRODUCTIONS

**1,035**

ON SITE STUDENTS

**84**

PERFORMANCES

**316**

ACTIVE VOLUNTEERS

**5**

SPECIAL EVENTS

**33,922**

VOLUNTEER HOURS

**14,140**

GUESTS

**\$2,838**

DONATION BOX DOLLARS

**547**

SUBSCRIPTIONS

**\$59,822**

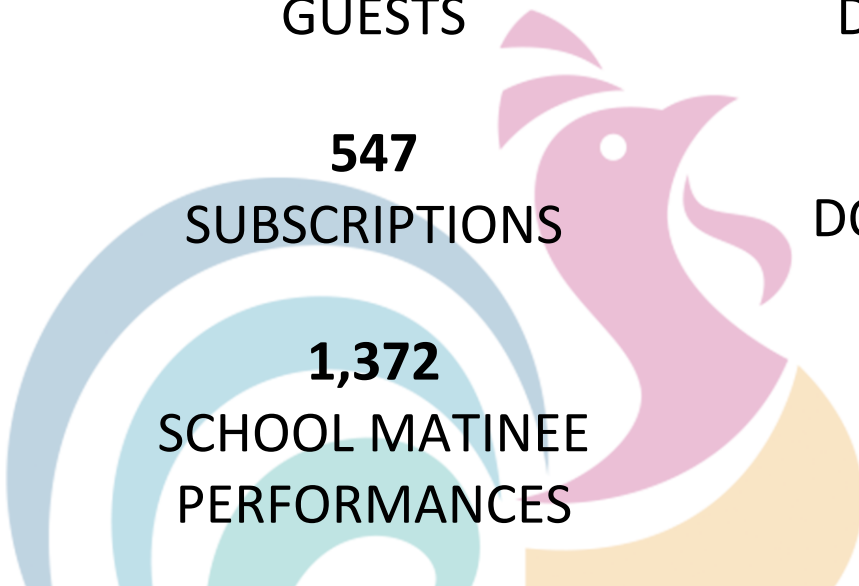
DONATED BY INDIVIDUALS

**1,372**

SCHOOL MATINEE  
PERFORMANCES

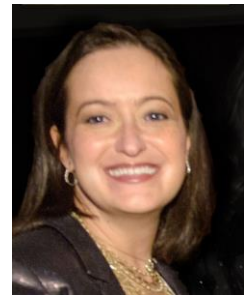
**\$15,899**

SPONSORS &  
CORPORATIONS



## A note from the Chief Executive Artistic Director

Weathervane's extraordinary growth for the third season running was interrupted in March by COVID-19. Although we are eager to get back to producing theatre, we are committed to waiting until it is safe for all of us to return.



This Season, we were able to produce six of ten planned productions. Two productions from Weathervane's 85<sup>th</sup> Season will return to our stage. *Kinky Boots* - which will be the first large scale musical we produce in the future, and *The 8x10 Theatre Fest*, which will be our first on stage production once we are able to return to live shows.

In the interim, Weathervane is making movies! We started work on our first four productions in the summer of 2020. Four short films will be shared online: three plays from Scott Mullen's collection of 10 minute plays titled "The Airport Plays" are in the process of being filmed at the Akron Canton Airport, and Frederick Stoppel's "Judgement Call" will be filmed at Akron's Baseball Park, Canal Park. Several more partnership projects with Akron area anchor institutions are in the works.

"Why movies?" You might ask. Here's our thinking: Weathervane's mission is "... to enrich quality of life and engage the community through theatre and education," and the second part of our mission is still underway! Classes and workshops continue online, which fulfills a huge aspect of Weathervane's purpose. However, the first part, theatre, at the moment is impossible. So we decided to get creative! Theatre, by its very nature, is a live event; however, it is essentially a presentation performed for its dramatic quality. The live aspect of theatre is an irreplaceable communal experience that we cannot safely enact, BUT we can tell stories; we can create them with our community and for our community. And we can continue to enrich the quality of life and engage our community – that's why we are here!

Throughout the season, we have been the honored recipients of many generous donations. Our gratitude to Tom and Shelly Koutnik, who donated funds to re-create our coffee bar and concessions area, and to Jim and Maureen Kovach, who donated funds to put a new surface on our much-loved stage floor.

Many thanks to our Board of Trustees, which has been working diligently to fundraise; to our generous donors, who have been giving what they can to help Weathervane survive this pandemic safely; to our dedicated and talented staff, who have adapted to new ways to work and make art; to our steadfast and enthusiastic volunteers who work side by side with staff to make the magic happen; to our students and audiences and their willingness to master new technology to connect with us; to our interns, who helped Weathervane thrive during the quietest days our stage has ever seen; and to the directors, choreographers, musicians and instructors who are supporting Weathervane in new and innovative ways.

Thank you all for your support of Weathervane Playhouse and our mission. Thank you for making us who and what we are. Your time, talents, and financial support provide a home for our Weathervane family and make the dreams of our mission a beautiful reality.

Looking forward to our next opportunity to be together,

A handwritten signature in blue ink that reads "Melanie". The signature is fluid and cursive. It is positioned over a large, colorful graphic element consisting of overlapping curved shapes in shades of blue, pink, and yellow.

Melanie YC Pepe  
Chief Executive Artistic Director

# The 2019/2020 Season on our MAINSTAGE

## **School of Rock**

Musical

August 2 - 18, 2019

## **The Who's TOMMY**

Rock Opera

September 12 – 29, 2019

## **Agatha Christie's And Then There Were None**

Mystery

October 17 – November 3, 2019

## **Joseph and the Amazing Technicolor Dreamcoat**

Musical

November 26, 2019 - December 22, 2019

## **Margaret Atwood's**

### **Alias Grace**

Drama

January 16 - February 2, 2020

## **Memphis**

Musical

February 20 - March 8, 2020

## **Radium Girls**

Drama

*Cancelled*

## **Kinky Boots**

Musical

*Postponed*

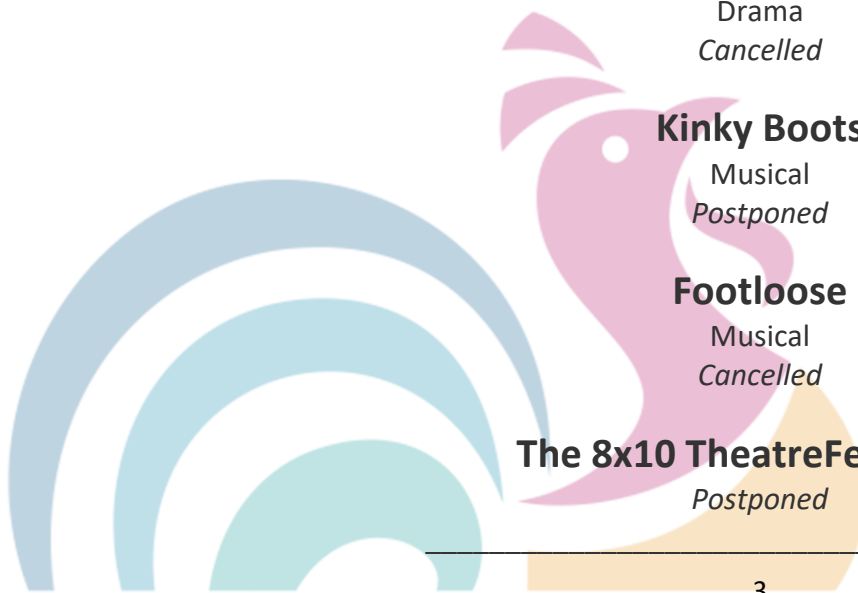
## **Footloose**

Musical

*Cancelled*

## **The 8x10 TheatreFest, 2020**

*Postponed*



## SPECIAL EVENTS

**Bingo! The Winning Musical**

August 26, 2019

**Weathervane's Annual Holiday Drop-In**

December 12, 2019

**Hogwarts Holiday Express**

December 28, 2019

**The 86<sup>th</sup> Season Announcement**

February 23, 2020

**Weathervane's Annual Gala**

1940 Radio Murder Mystery

*Postponed*

**The 85<sup>th</sup> Season Chanticleer Awards**

*Postponed*

---

## Weathervane Playhouse Staff

Melanie YC Pepe, Chief Executive / Artistic Director

Fred Gloor, Marketing Director / Associate Artistic Director

Keith Campbell, Director of Audience Development

Joshua T. Larkin, Business Manager

Justyn Jaymes, Director of Development

Scott K. Davis, Coordinator of Volunteers

Lauren Mathis (Sprowls), Education Director

Melissa Moyseenko (Tippin), Education Assistant and Education Event Coordinator

Richard Morris, Jr, Technical Director

Jasen Smith, Resident Costume Designer / Costume Shop Manager

Kathy Kohl, Assistant Technical Director

Jack Ina, Master Electrician

John Coyne, House Sound Technician

Nancy Humes, Administrative Associate

Kim Shores, Bookkeeper

---

## 2019/2020 Board of Trustees

### Executive Committee

April Deming, President

William Kist, First Vice President

Mary Kay Finn, Second Vice President

Lisa Armstrong, Secretary

David Bird, Treasurer

Ian Haberman, Member-at-Large

### Trustees

Pat Ameling

Kathy Ashcroft

Frank Castorena

Mike Chapman

Wendy Cooley

Dr. Richard Ellison

Barry Friedman

Diane Geiger

Joe Geiger

Kevin Lambes

Eileen Moushey

Nancy Schafer

Alex VanAllen

Ali Hamad Whitley

